

Figure S1

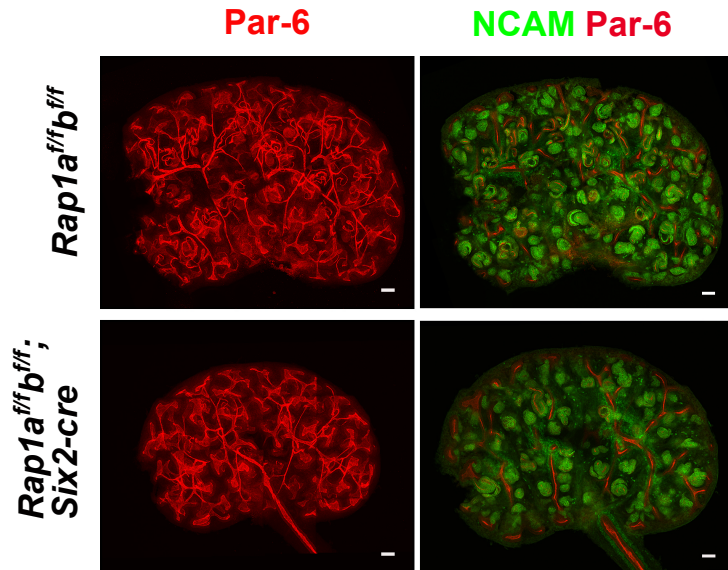


Figure S1. Absence of Rap1 from developing nephron tubules results in luminal defects. E14.5 control (Rap1^{af/f}; Rap1^{bf/f}) and mutant (Rap1^{af/f}; Rap1^{bf/f}; Six2-cre) kidneys were immunostained with Par-6 (red), which labels nephron lumens, and NCAM (green), which labels the plasma membrane of nephron progenitors and the basolateral plasma membrane of immature nephron epithelia. Scale: 200 μ m. These low magnification, confocal images of the E14.5 kidney are associated with Fig. 4C and with Movies 1a and 1b.