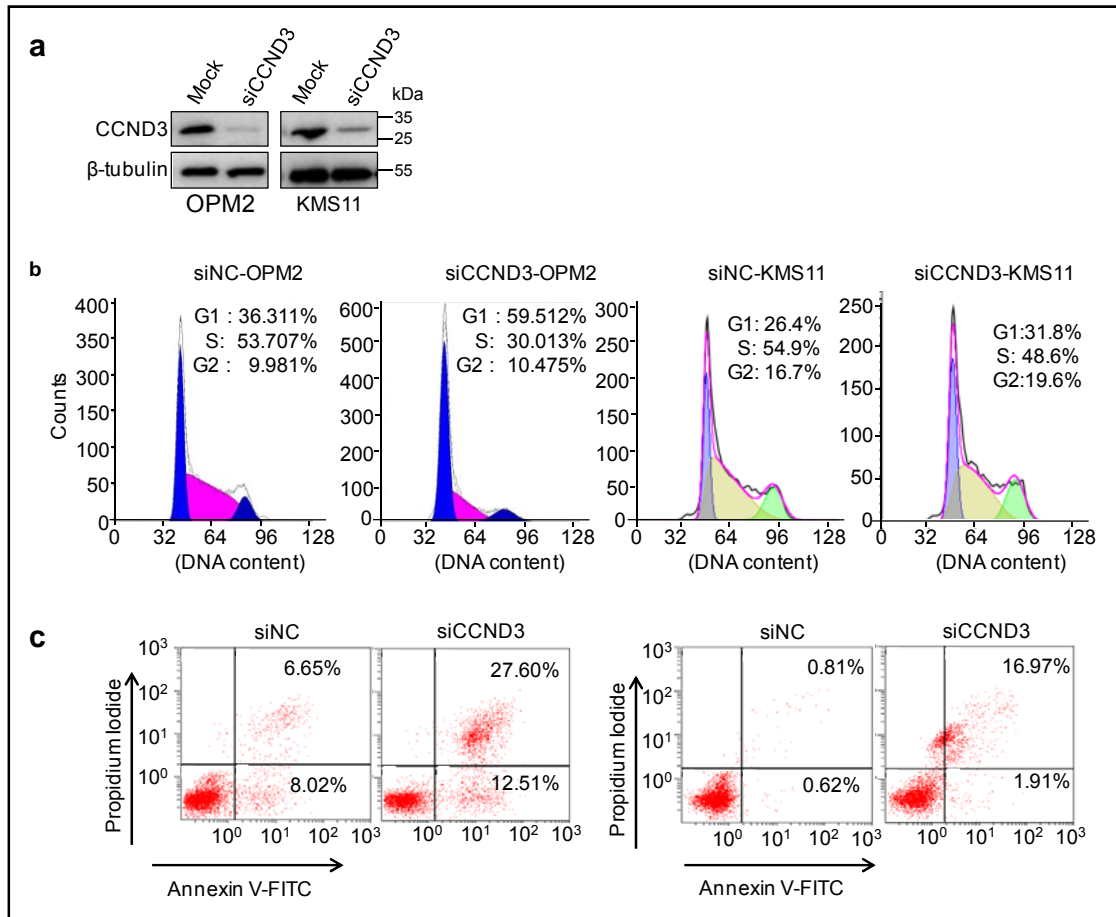
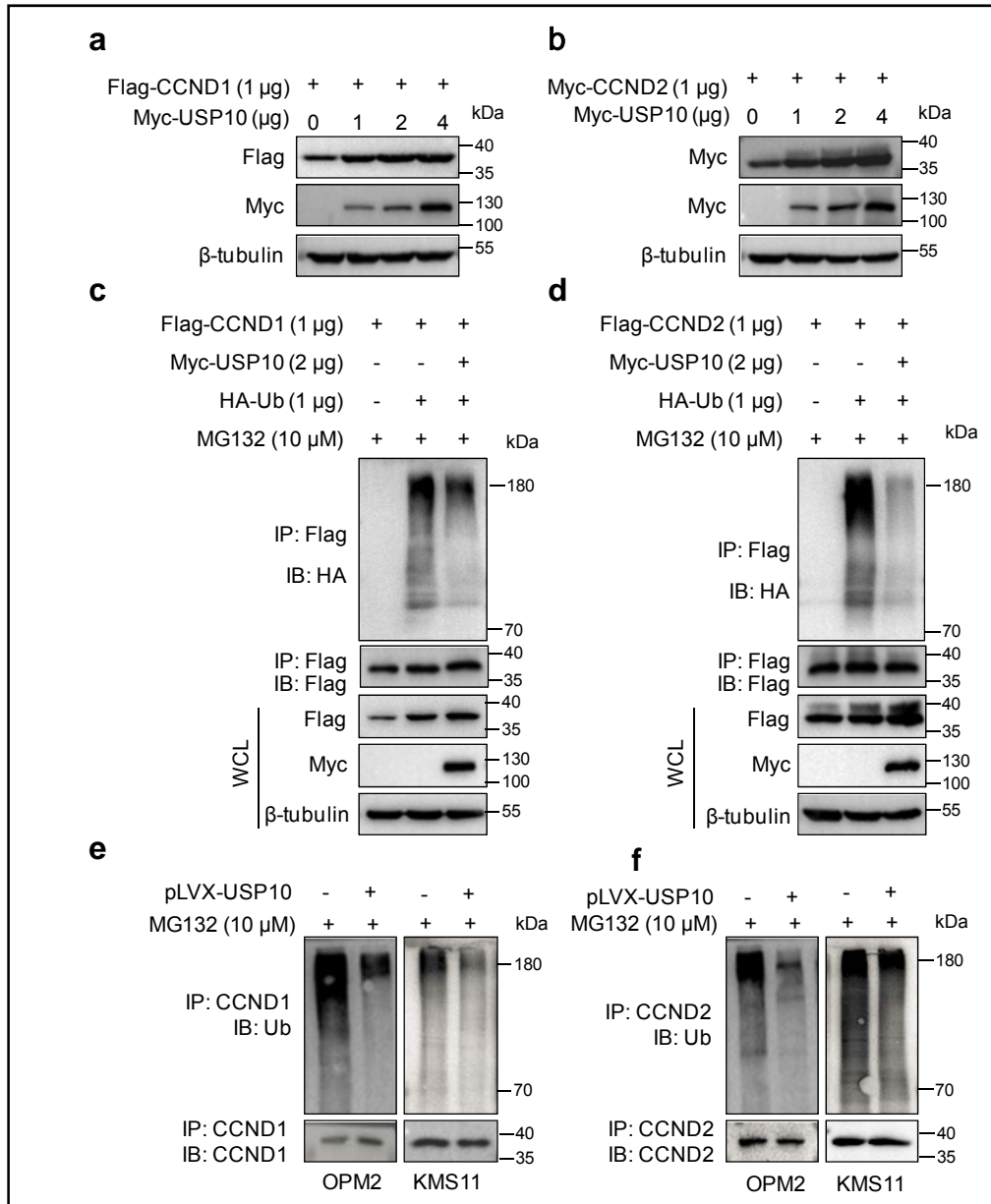


## Supplemental Figures



**Supplementary Fig. 1. Inhibition of CCND3 leads to MM cell apoptosis.** **a**, CCND3 was knocked down from OPM2 and KMS11 cells. **b**, OPM2 and KMS11 cells were analyzed for cell cycle after CCND3 was knocked down. **c**, OPM2 and KMS11 cells were subjected to Annexin V-FITC/PI staining and cytometric analysis after CCND3 was knocked down.



**Supplementary Fig. 2. USP10 stabilizes CCND1 and CCND2 by preventing their polyubiquitination.** CCND1 (a) or CCND2 (b) plasmids were co-transfected into HEK293T cells with increased USP10 for 48 hrs, followed by IB assays. c-d CCND1 (c) or CCND2 (d) were co-transfected into HEK293T cells with USP10 and Ub plasmids for 24 hrs, followed by MG132 treatment for 8 hrs, cell lysates were then subjected to IP/IB assays as indicated. e-f Lentiviral USP10 were infected into OPM2 and KMS11 cells for 72 hrs, followed by MG132 treatment for 8 hrs, cell lysates were then subjected to IP/IB assay against CCND1 (e) and CCND2 (f).