

## Supporting Information

### Regeneration Profiles of Olfactory Epithelium After SARS-CoV-2 Infection in Golden Syrian Hamsters

Shinji Urata<sup>1,3†</sup>, Junki Maruyama<sup>2†</sup>, Megumi Kishimoto-Urata<sup>2,3</sup>, Rachel A. Sattler<sup>2</sup>, Rebecca Cook<sup>1</sup>, Nantian Lin<sup>1</sup>, Tatsuya Yamasoba<sup>3</sup>, Tomoko Makishima<sup>1\*</sup>, Slobodan Paessler<sup>2\*</sup>

<sup>1</sup>Department of Otolaryngology, University of Texas Medical Branch, Galveston, Texas, USA,

<sup>2</sup>Department of Pathology, University of Texas Medical Branch, Galveston, Texas, USA,

<sup>3</sup>Department of Otolaryngology, Graduate School of Medicine, the University of Tokyo, Tokyo, Japan

†These authors contributed equally to this work.

\*Corresponding authors

#### Contact Author Information:

##### Tomoko Makishima

Department of Otolaryngology, University of Texas Medical Branch, Galveston, Texas, USA.

Phone: +1-409-772-9946

Fax: +1-409-772-1715

E-mail: [tomakish@utmb.edu](mailto:tomakish@utmb.edu)

##### Slobodan Paessler

Department of Pathology, University of Texas Medical Branch, Galveston, Texas, USA.

Phone: +1-409-747-2464

Fax: +1-409-747-0762

E-mail: [slpaessl@utmb.edu](mailto:slpaessl@utmb.edu)

#### Contents:

Figure S1: Criteria for choosing 4 areas

Figure S2: Details of OE thickness

Table S1: Samples analyzed in the study

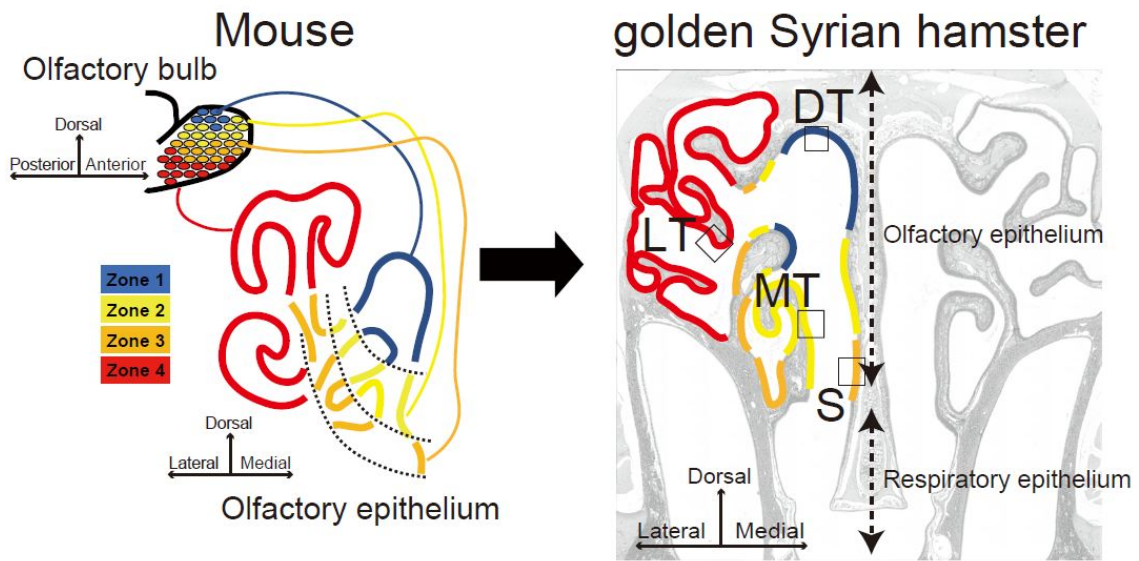


Figure S1

**Figure S1:** Zonal organization of the OE in the mouse and hamster. The OE of the mouse is subdivided into four zones differentiated by immunohistochemistry and in situ hybridization trends. We assigned the zones in the OE of the golden Syrian hamster corresponding to the anatomical areas of the mouse. Roughly, hamster OE areas corresponding to the mouse zones are: dorsal turbinate (DT) to Zone 1, medial turbinate (MT) to Zone 2, septum (S) to Zone 3, lateral turbinate (LT) to Zone 4.

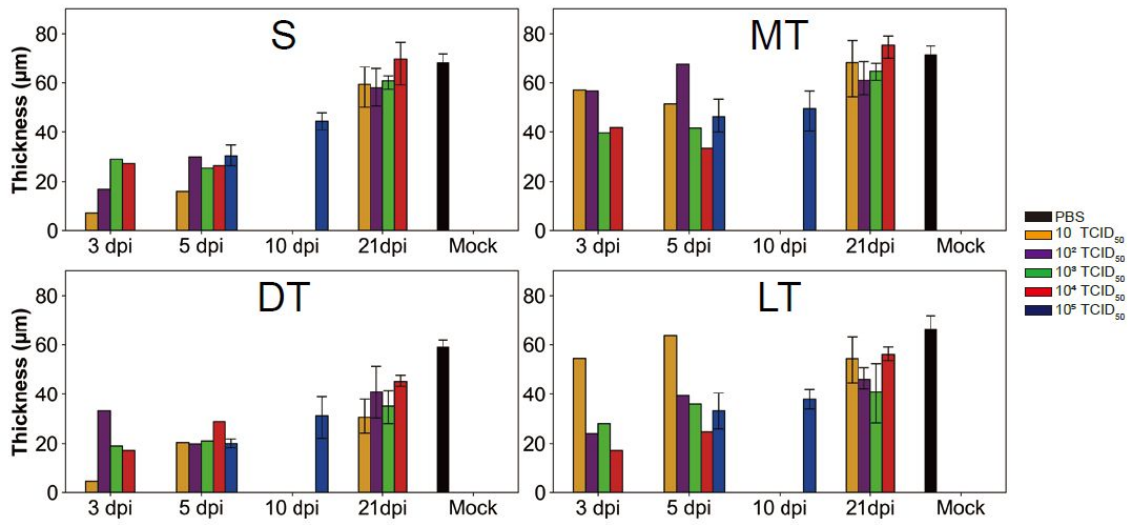


Figure S2

**Figure S2:** OE thickness of hamsters inoculated with different doses of SARS-CoV-2. The average and S.E.M. are shown.

**Table S1. Samples Analysed in this Study**

<b>Sampling Time</b>	<b>Inoculation Dose</b>	<b>Sample Number</b>
3 dpi	10 <sup>4</sup> TCID <sub>50</sub>	1
3 dpi	10 <sup>3</sup> TCID <sub>50</sub>	1
3 dpi	10 <sup>2</sup> TCID <sub>50</sub>	1
3 dpi	10 TCID <sub>50</sub>	1
3 dpi	Mock (PBS)	1
5 dpi	10 <sup>4</sup> TCID <sub>50</sub>	1
5 dpi	10 <sup>3</sup> TCID <sub>50</sub>	1
5 dpi	10 <sup>2</sup> TCID <sub>50</sub>	1
5 dpi	10 TCID <sub>50</sub>	1
5 dpi	10 <sup>5</sup> TCID <sub>50</sub>	1
5 dpi	Mock (PBS)	6
10 dpi	10 <sup>5</sup> TCID <sub>50</sub>	5
10 dpi	Mock (PBS)	5
21 dpi	10 <sup>4</sup> TCID <sub>50</sub>	3
21 dpi	10 <sup>3</sup> TCID <sub>50</sub>	3
21 dpi	10 <sup>2</sup> TCID <sub>50</sub>	3
21 dpi	10 TCID <sub>50</sub>	3
21 dpi	Mock (PBS)	3