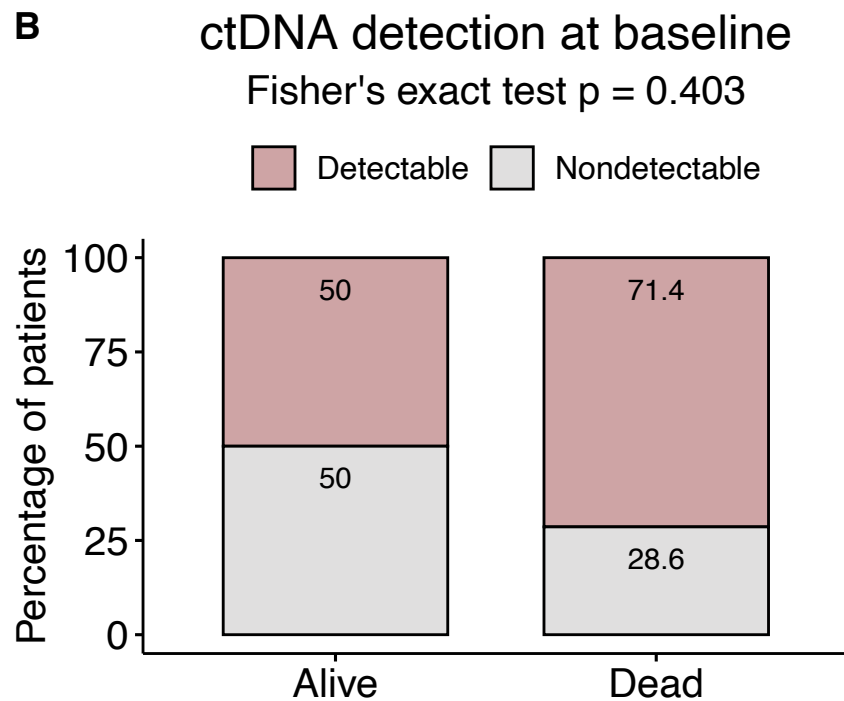
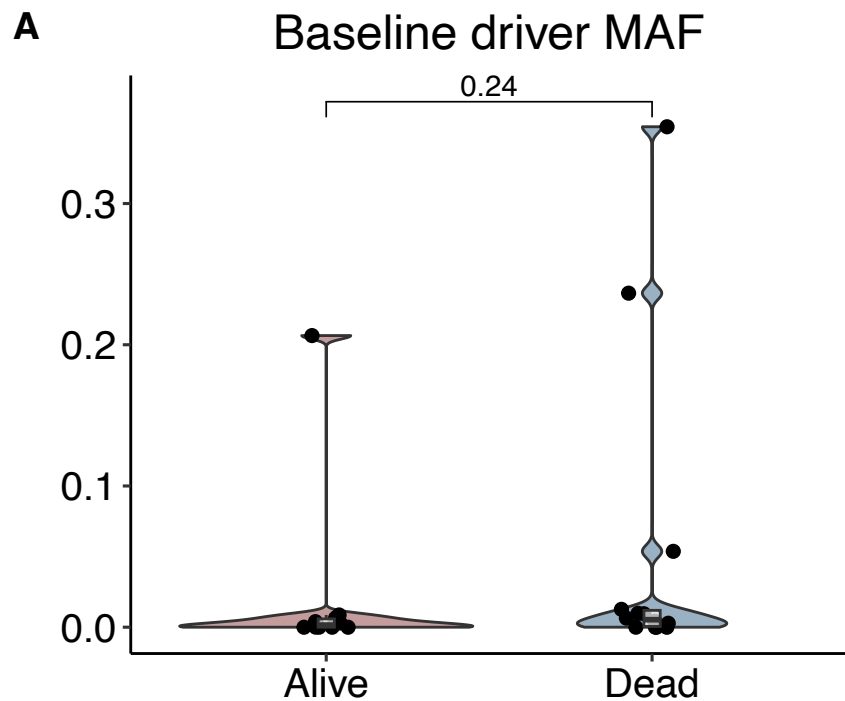


Supplementary Figure 3



C Number of patients carrying a mutation in driver genes

2	0	2	0	1	1	2	1	0	1	0	0	0	0	1	0	0	0	0	1	1	Alive
4	3	3	2	2	2	2	2	1	1	1	1	1	1	1	1	1	1	1	0	0	Dead
TERT	MTOR	BRAF	NF1	SETD2	ARID1B	ATRX	DDX3X	TP53	PBRM1	PIK3CA	MET	EZH2	JAK2	ARID2	IDH1	RAC1	PTEN	CTNNB1	KIT	JAK1	