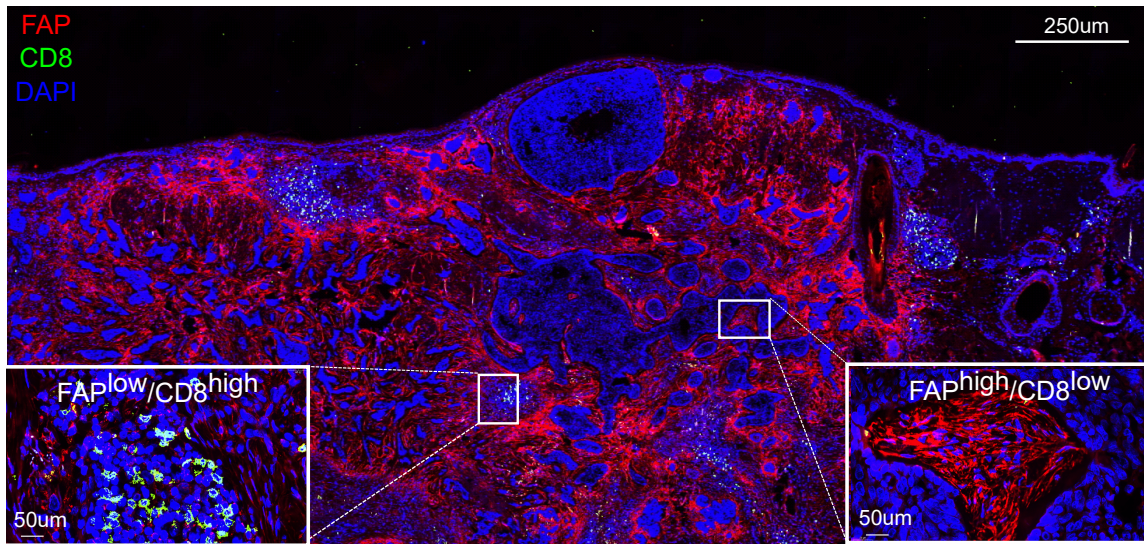
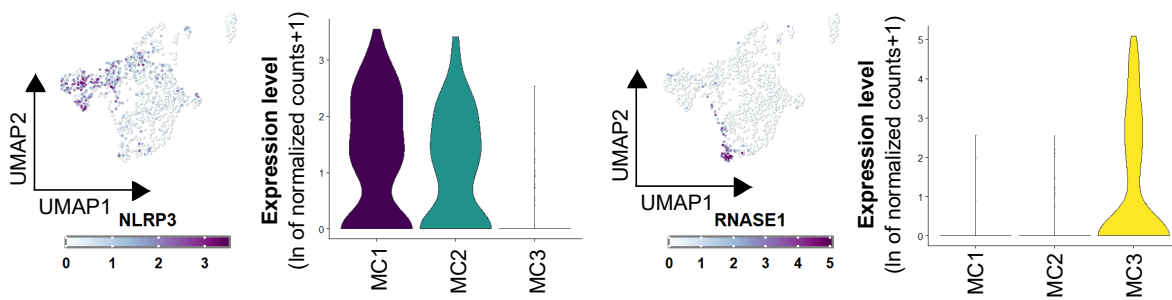
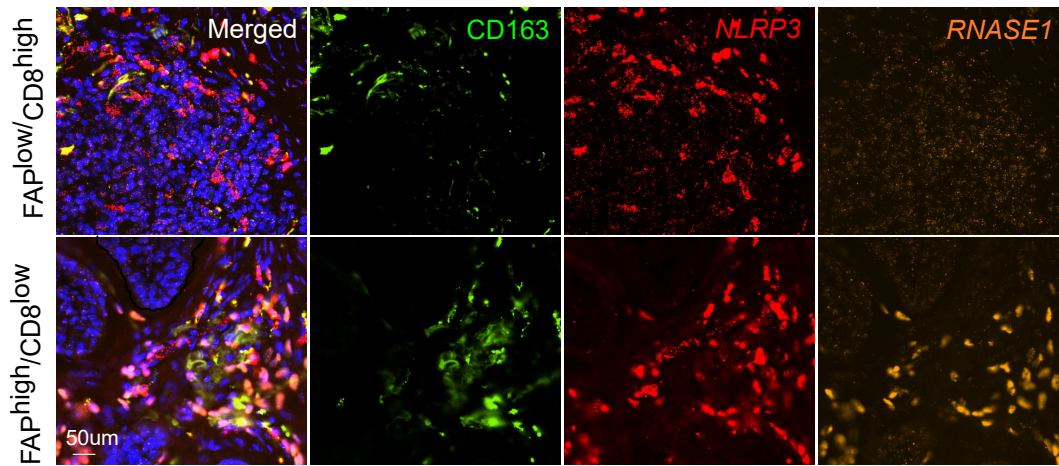


A**B**

scRNAseq Myeloid cells huBCC

**C**

Supplementary Figure S7: ECM-remodeling CAFs and macrophages co-localize in CD8 T cells-depleted areas.

A) Representative scan images of a huBCC stained with DAPI (blue), FAP (red) and CD8 (green). Lower left zoom highlights a FAP^{low}/CD8^{high} area, while lower right zoom highlights a FAP^{high}/CD8^{low} area. Scale bars indicate 250µm (main panel) and 50µm (zoom panels).

B) Expression level of MC1 (*NLRP3*) and MC3 (*RNASE1*) cluster markers in the Macrophages subpopulation, represented as a color scale overlaid UMAP plot and violin plots.

C) Representative scan images of a human BCC stained with DAPI (blue), CD163 (green), and *NLRP3* (red) and *RNASE1* probes for RNA FISH in both FAP^{low}/CD8^{high} area (upper panels) and FAP^{high}/CD8^{low} area (lower panels).