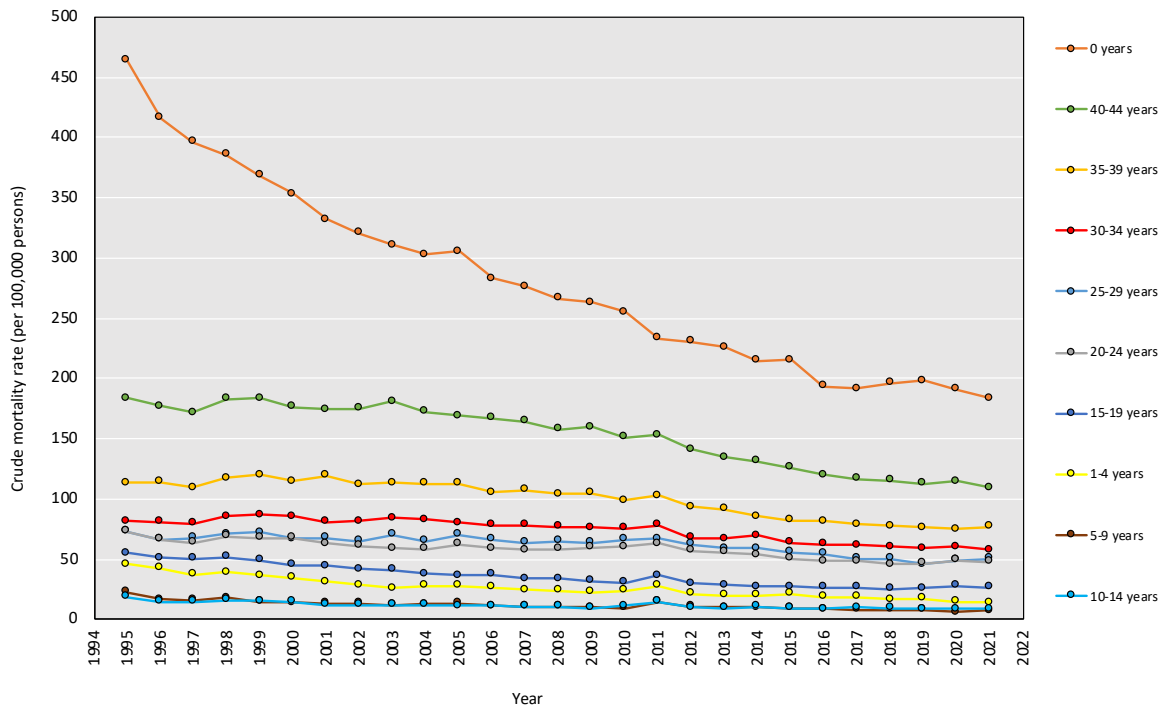


Appendix Table 1. Number of deaths in Japan between 1995 and 2021\*

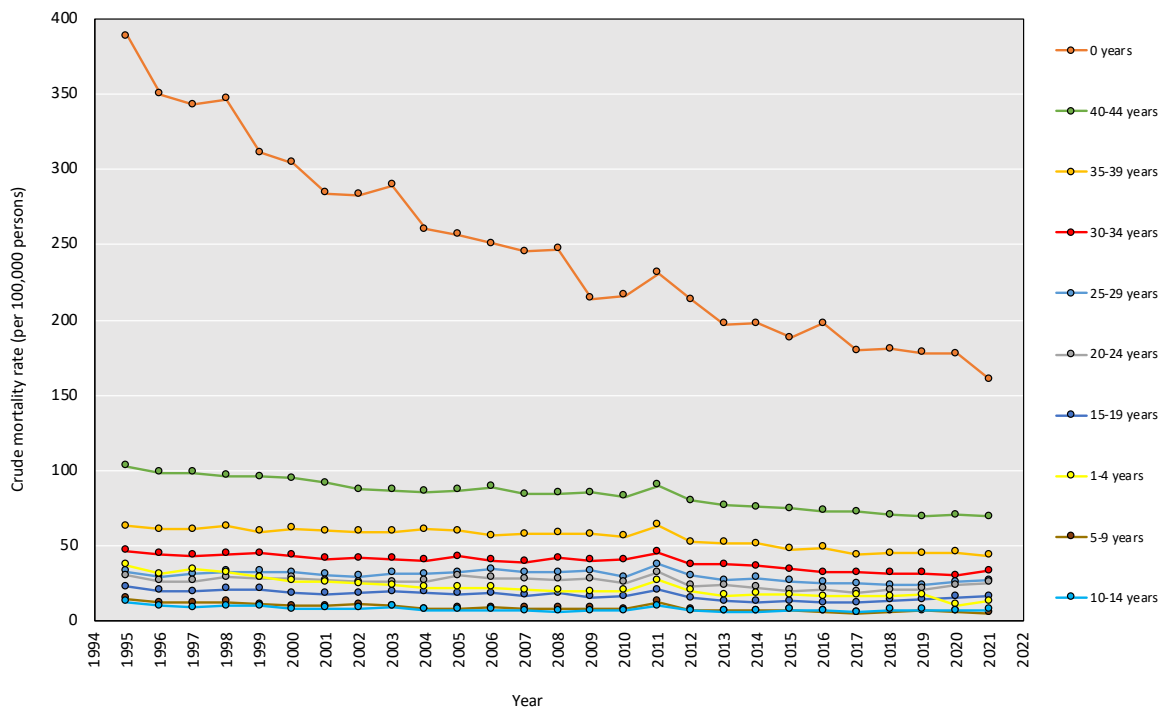
Year	Men					Women				
	All-cause	Malignant neoplasms	Heart disease	Cerebrovascular disease	COVID-19	All-cause	Malignant neoplasms	Heart disease	Cerebrovascular disease	COVID-19
1995	501276	159623	69718	69587	-	420863	103399	69488	76965	-
1996	488605	164824	68977	66479	-	407606	106359	69252	73887	-
1997	497796	167076	69776	65790	-	415606	108337	70398	72907	-
1998	512128	172306	71134	65529	-	424356	111615	71986	72290	-
1999	534778	175817	73979	66452	-	447253	114739	77100	72537	-
2000	525903	179140	72156	63127	-	435750	116344	74585	69402	-
2001	528768	181393	72727	63146	-	441563	119265	75565	68710	-
2002	535305	184033	74986	62229	-	447074	120535	77532	68028	-
2003	551746	186912	77989	63274	-	463205	122631	81556	68793	-
2004	557097	193096	77465	61547	-	471505	127262	82160	67508	-
2005	584970	196603	83979	63657	-	498826	129338	89146	69190	-
2006	581370	198052	82811	61348	-	503080	131262	90213	66920	-
2007	592784	202743	83090	60992	-	515550	133725	92449	66049	-
2008	608711	206354	86139	61121	-	533696	136609	95789	65902	-
2009	609042	206352	85543	59293	-	532823	137753	95202	63057	-
2010	633700	211435	88803	60186	-	563312	142064	100557	63275	-
2011	656540	213190	91298	59616	-	596526	144115	103628	64251	-
2012	655526	215110	92976	58625	-	600833	145853	105860	62977	-
2013	658684	216975	91445	56718	-	609752	147897	105278	61629	-
2014	660334	218397	92278	54995	-	612670	149706	104647	59212	-
2015	666707	219508	92142	53576	-	623737	150838	103971	58397	-
2016	674946	219846	93453	52718	-	633212	153242	104617	56635	-
2017	690770	220416	96330	53198	-	649797	152949	108538	56698	-
2018	699138	218625	98035	52398	-	663332	154959	110186	55788	-
2019	707421	220339	98210	51768	-	673672	156086	109504	54784	-
2020	706834	220989	99304	50390	2094	665921	157396	106292	52588	1372
2021	738141	222467	103700	51594	9732	701715	159038	111010	53001	7034

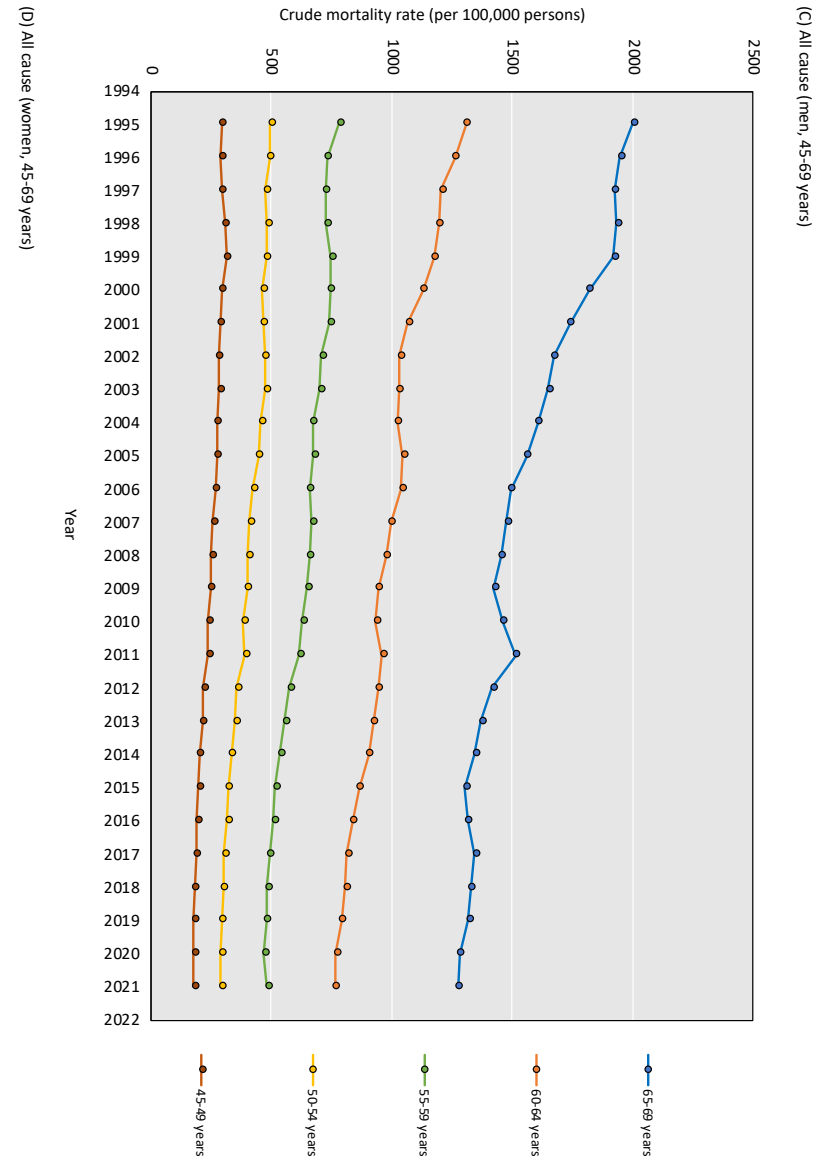
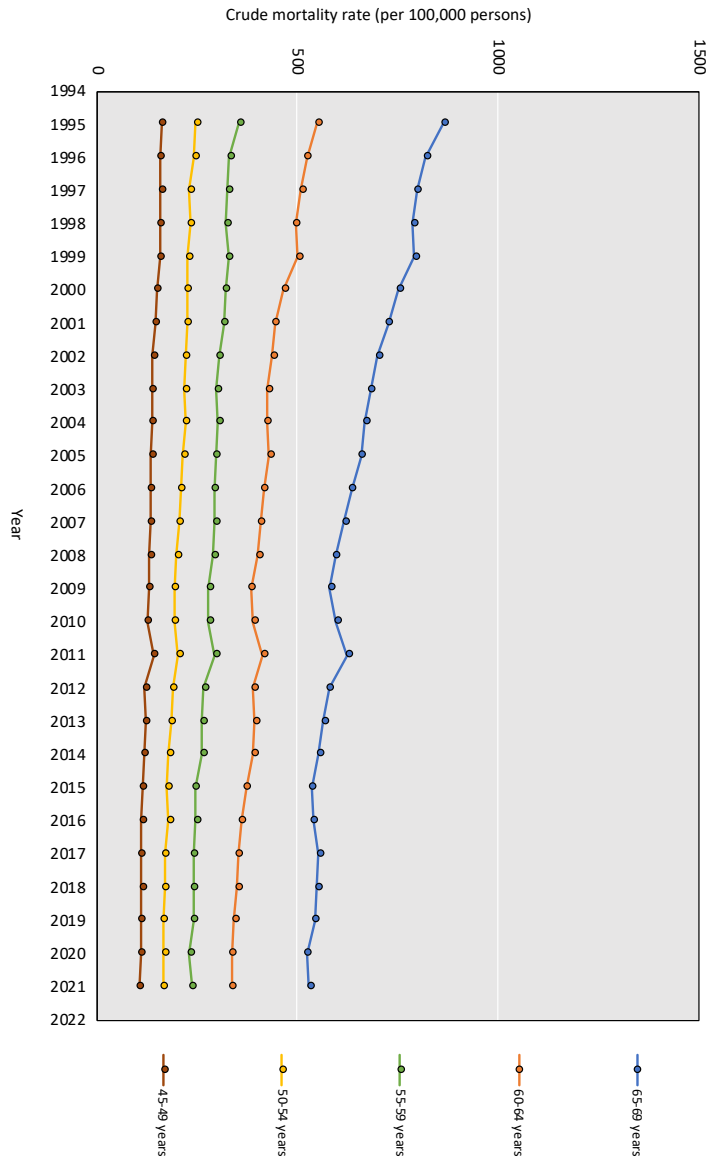
\*Malignant neoplasms (ICD-10: C00-C97); Heart diseases (I01-I02.0, I05-I09, I20-I25, I27, I30-I52); Cerebrovascular diseases (I60-I69); COVID-19 (U07)

(A) All cause (men, 0-44 years)

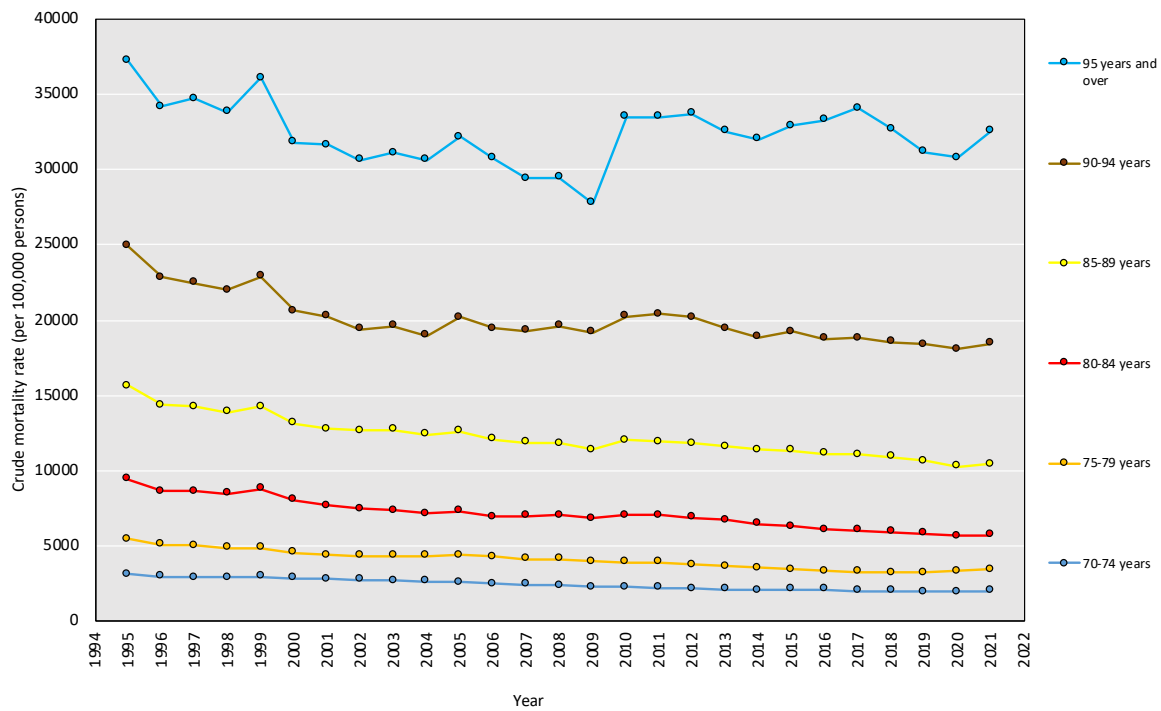


(B) All cause (women, 0-44 years)

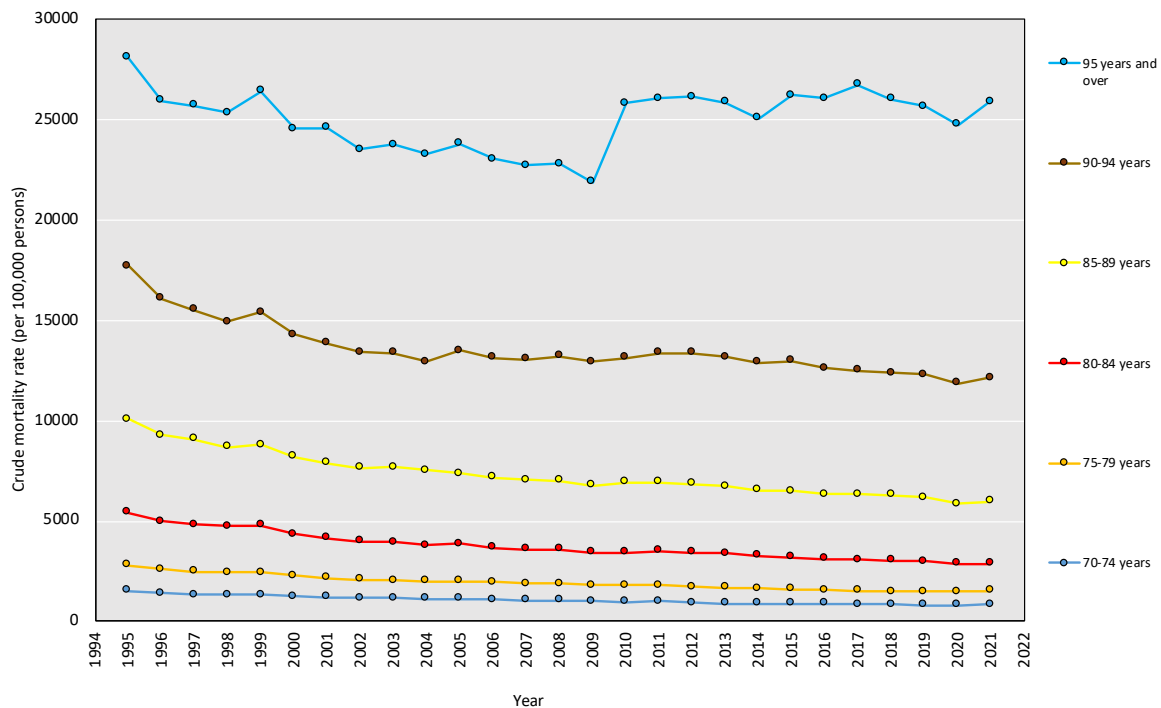




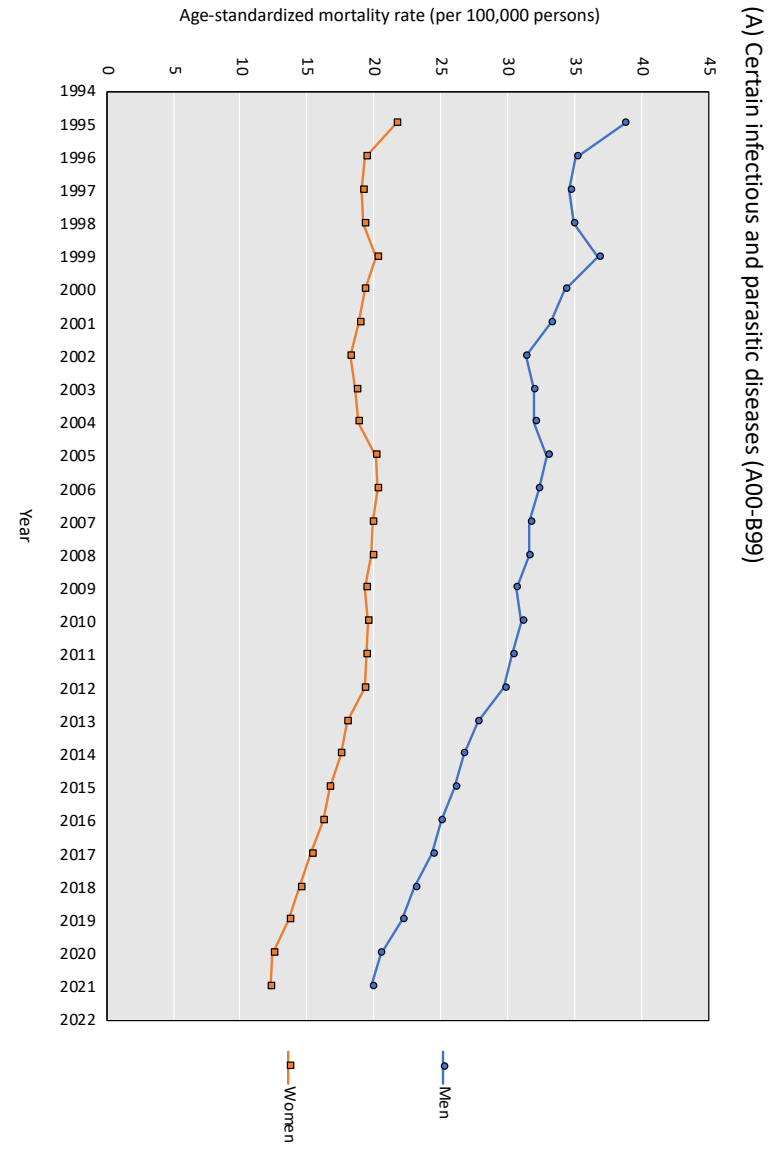
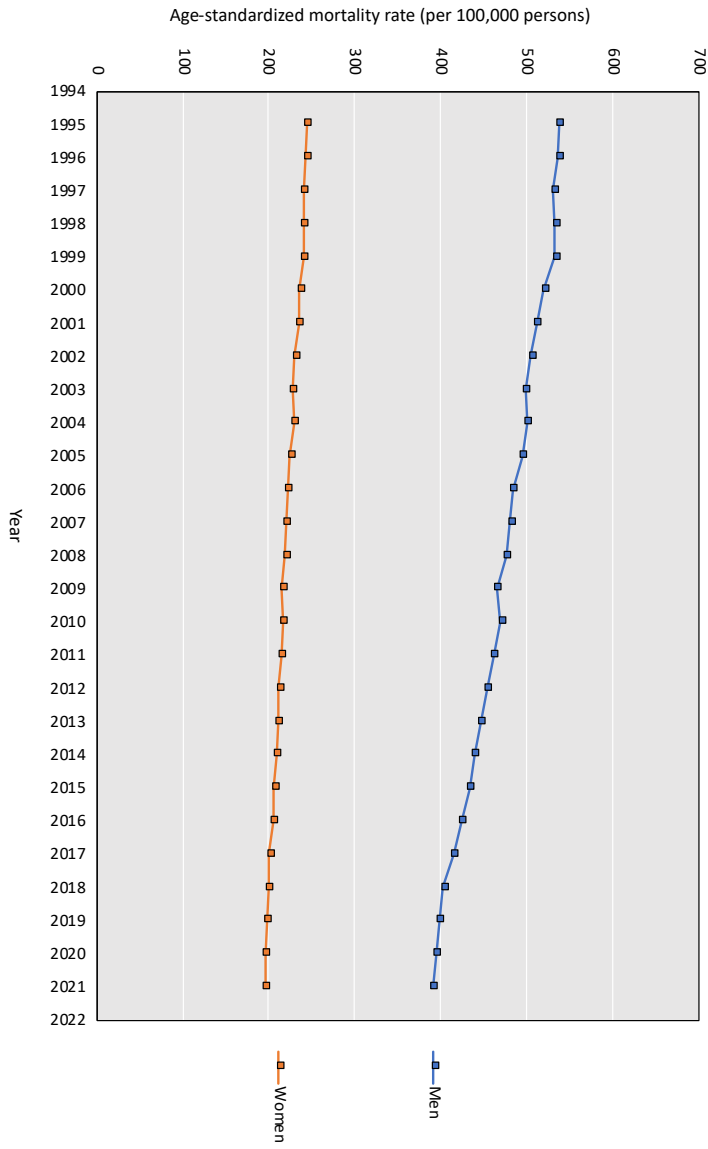
(E) All cause (men, 70-95 years and over)

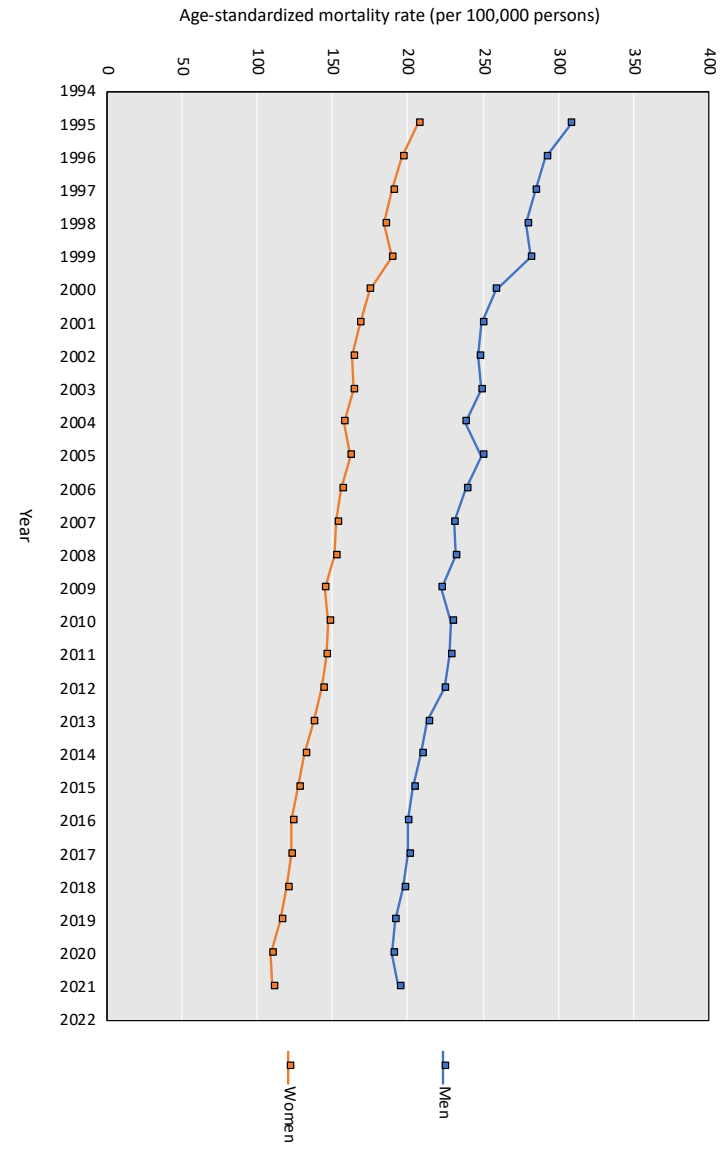
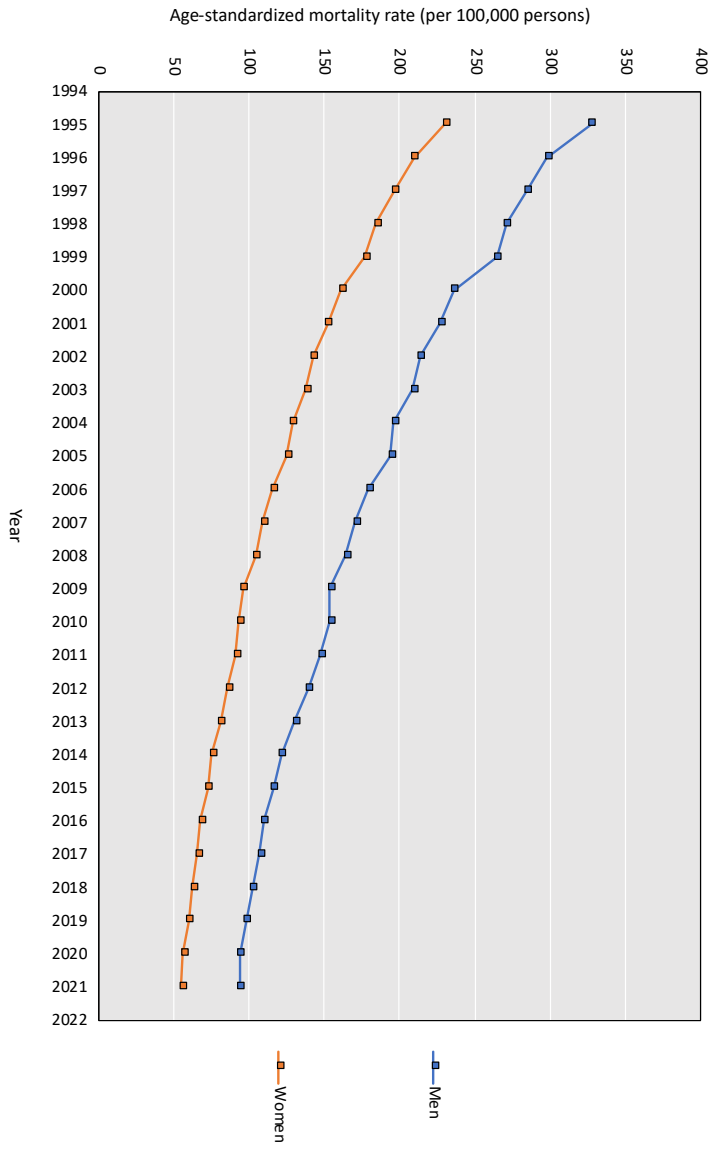


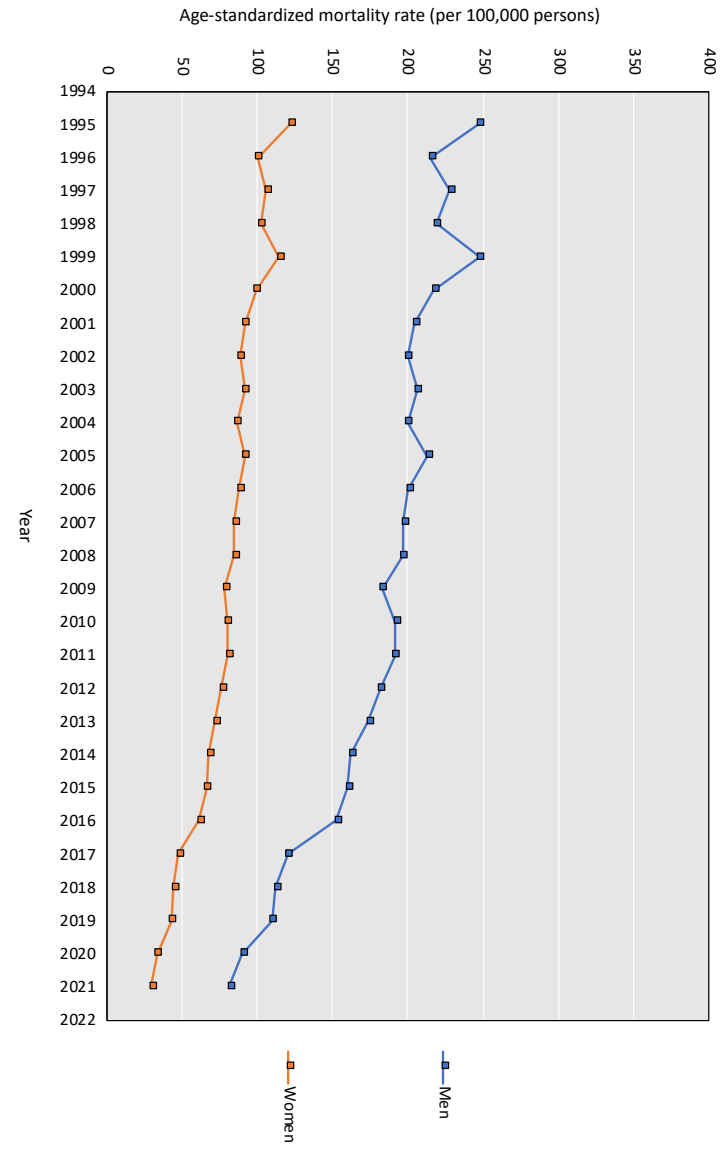
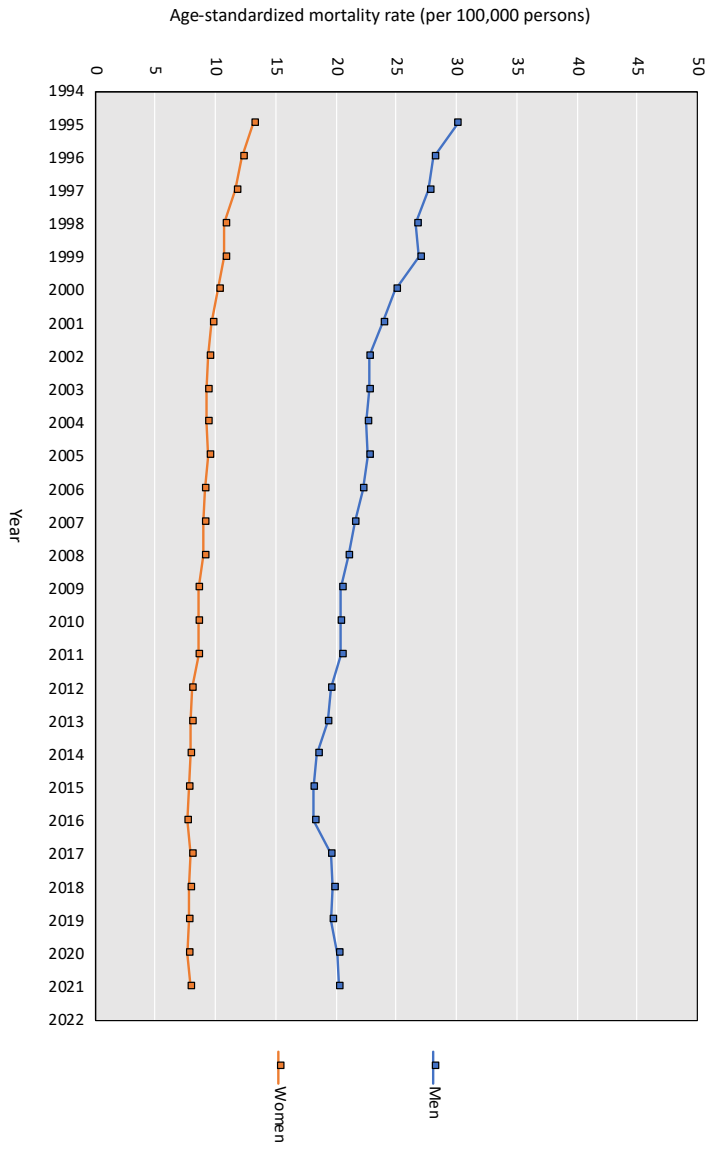
(F) All cause (women, 70-95 years and over)

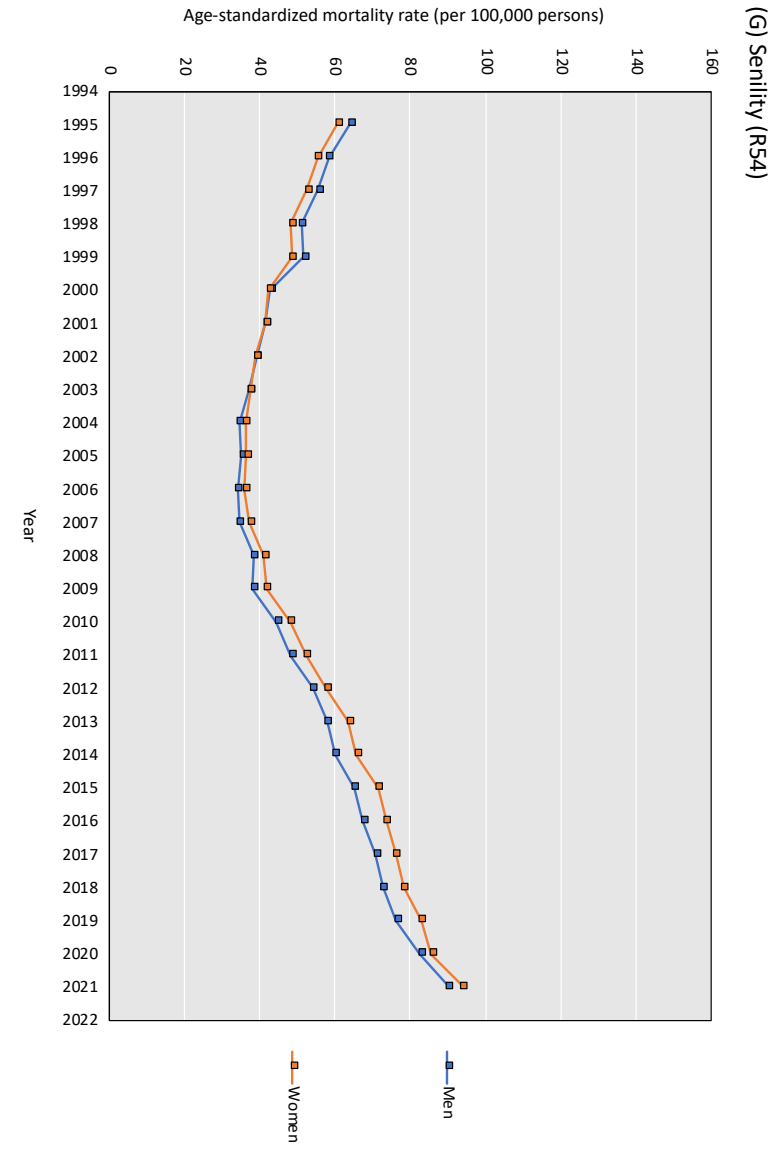
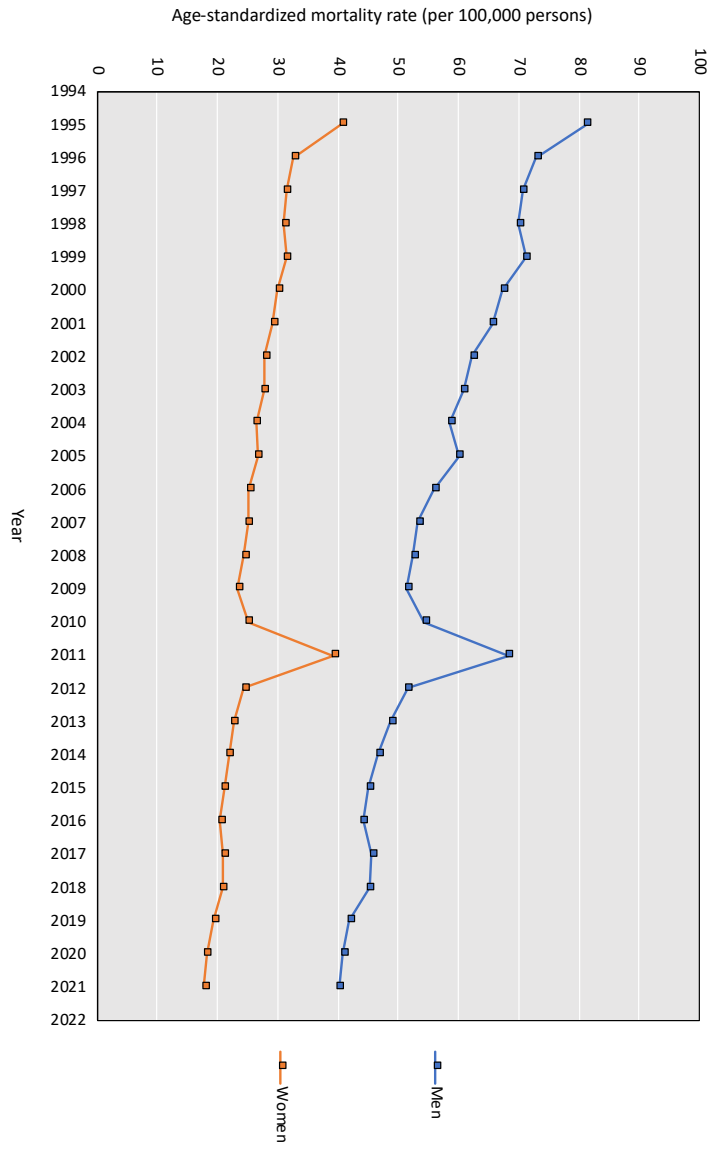


Appendix Figure 1. Trends in crude mortality rate by five-year age groups between 1995 and 2021



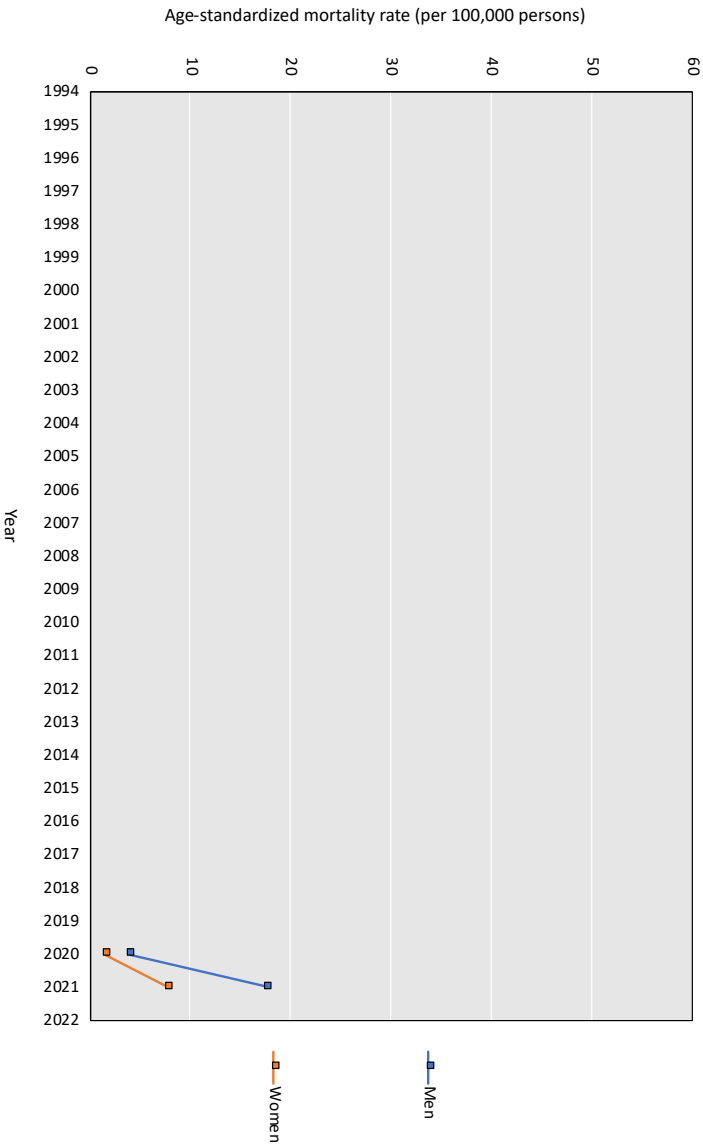




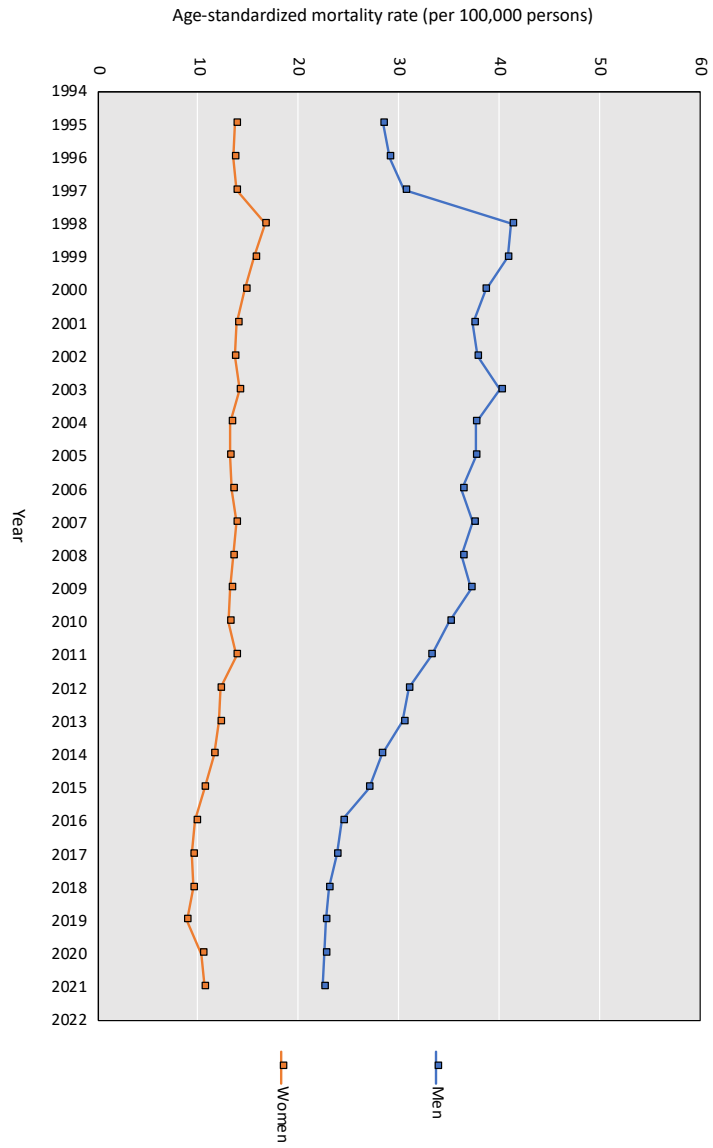




Appendix Figure 2. Trends in cause-specific age-standardized mortality rates by cancer site between 1995 and 2021

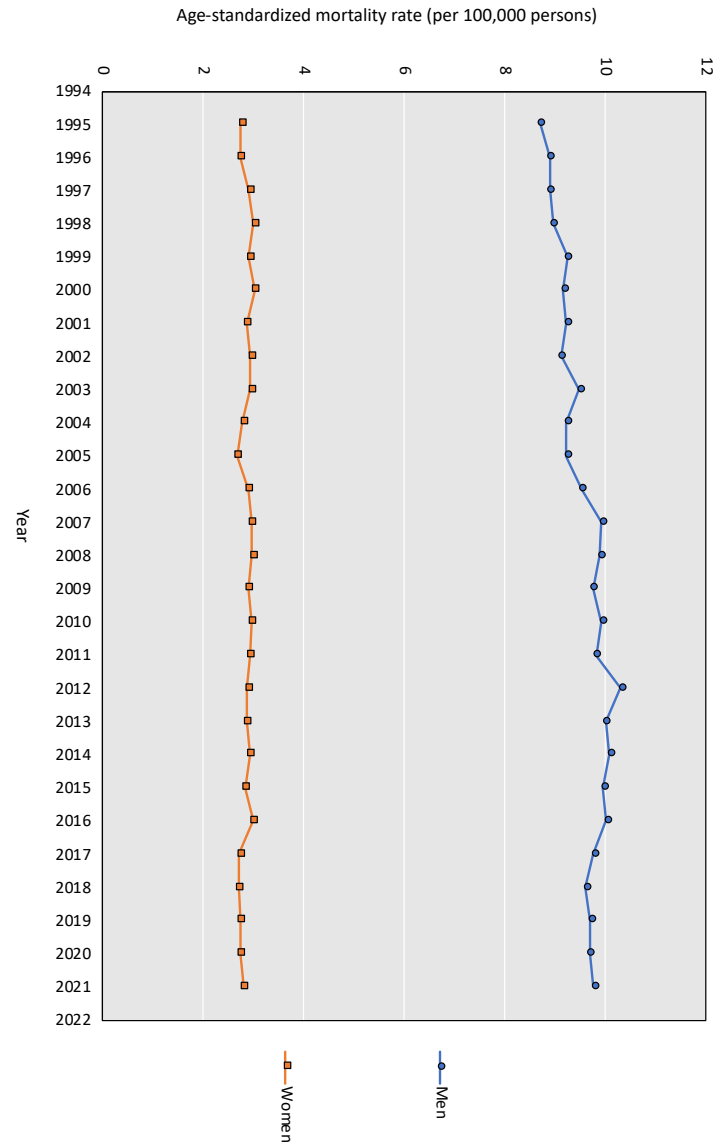


(I) COVID-19 (U07)

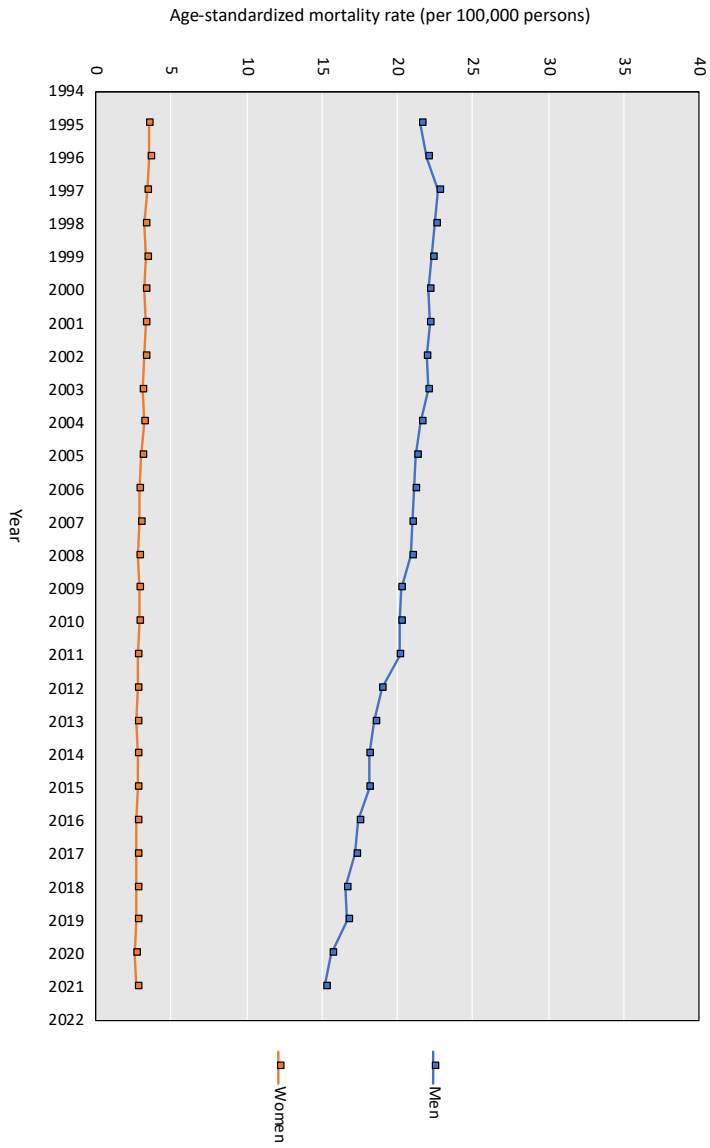


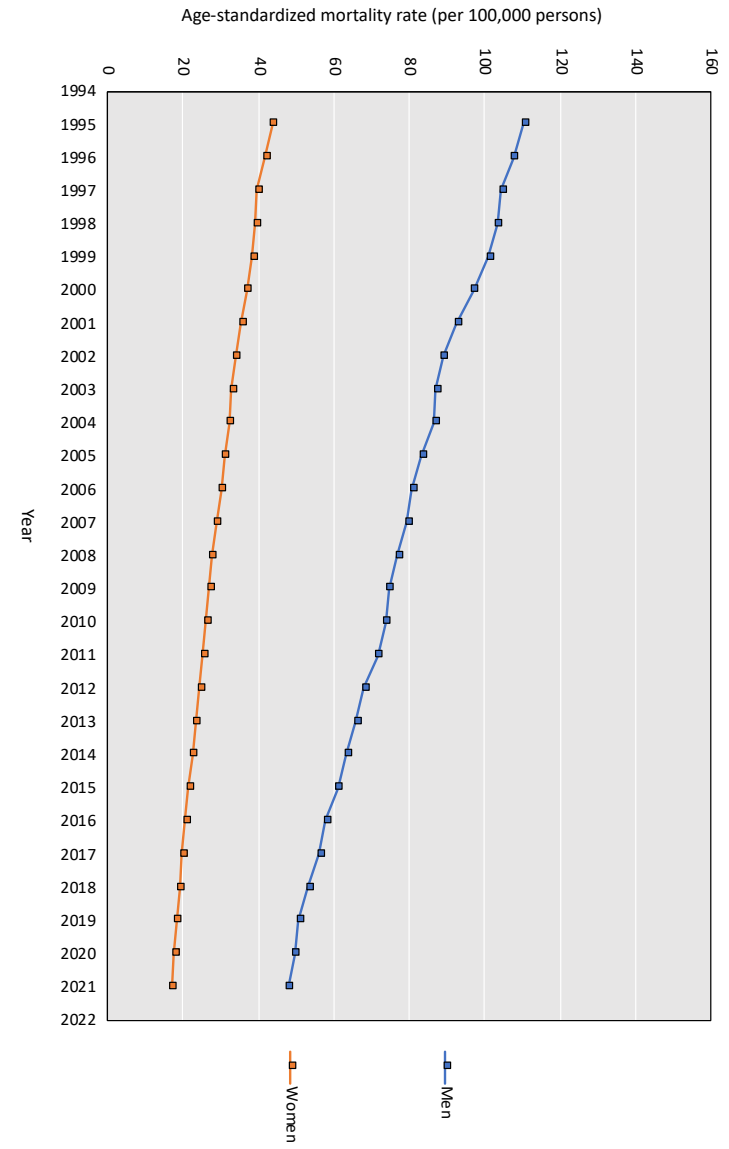
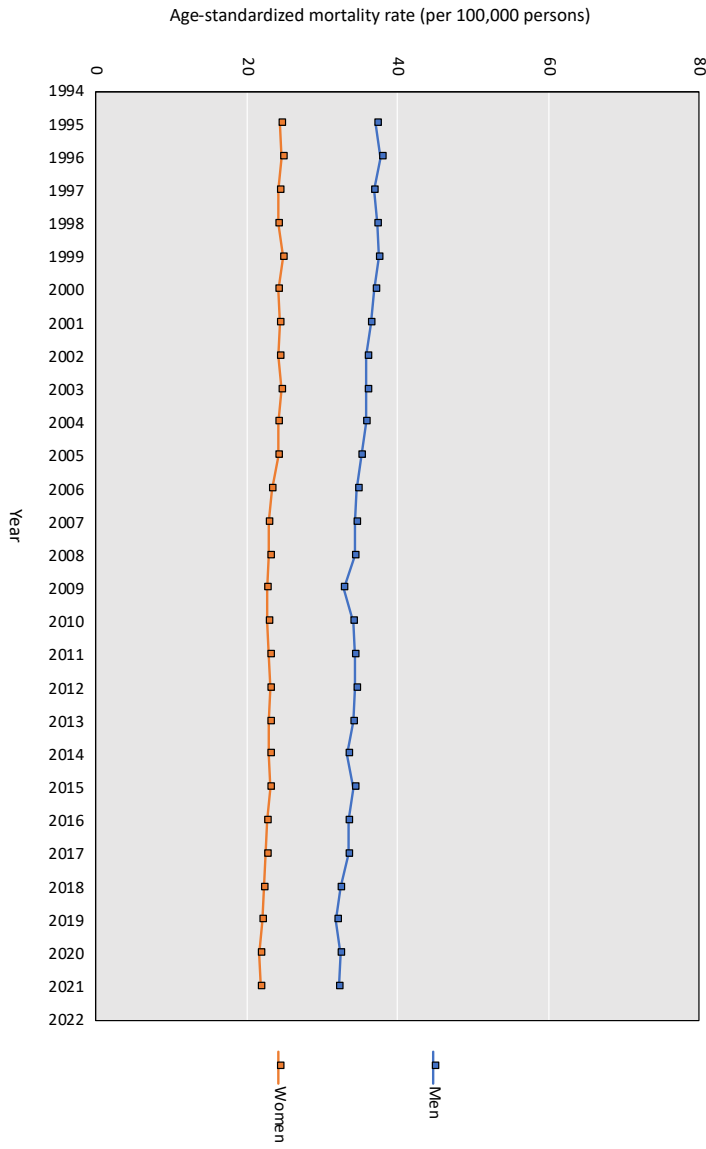
(I) Suicide (X60-84)

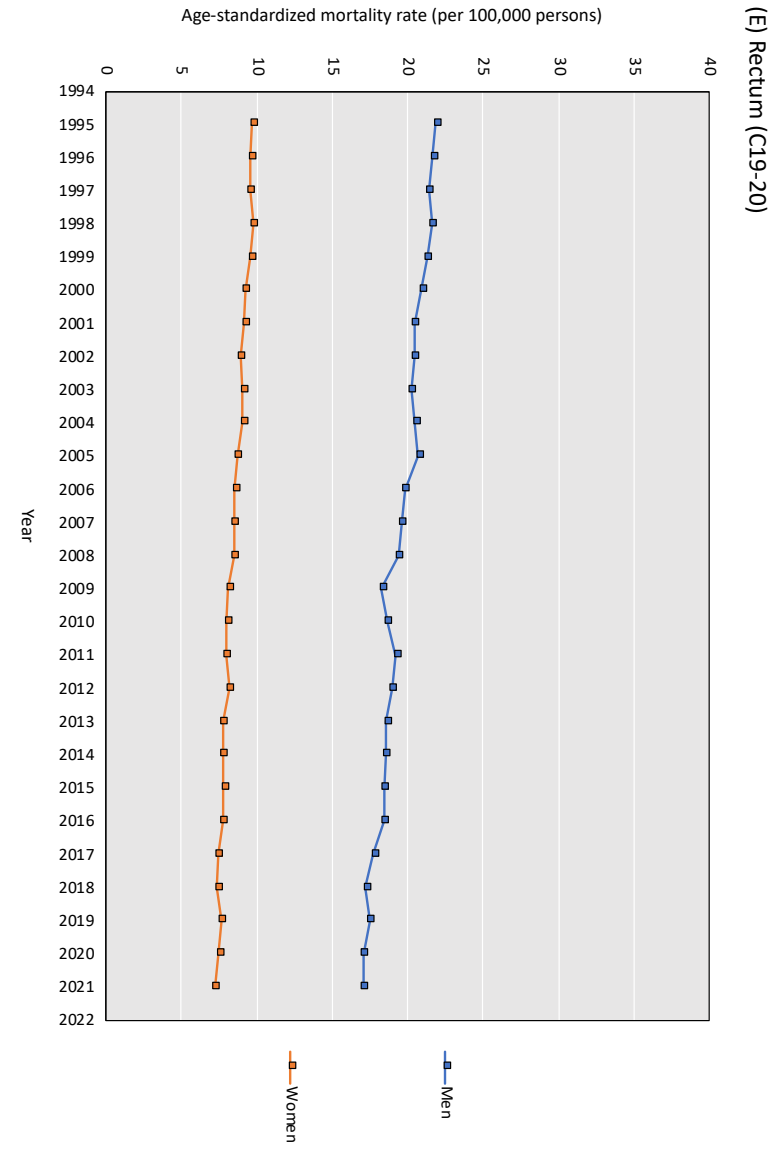
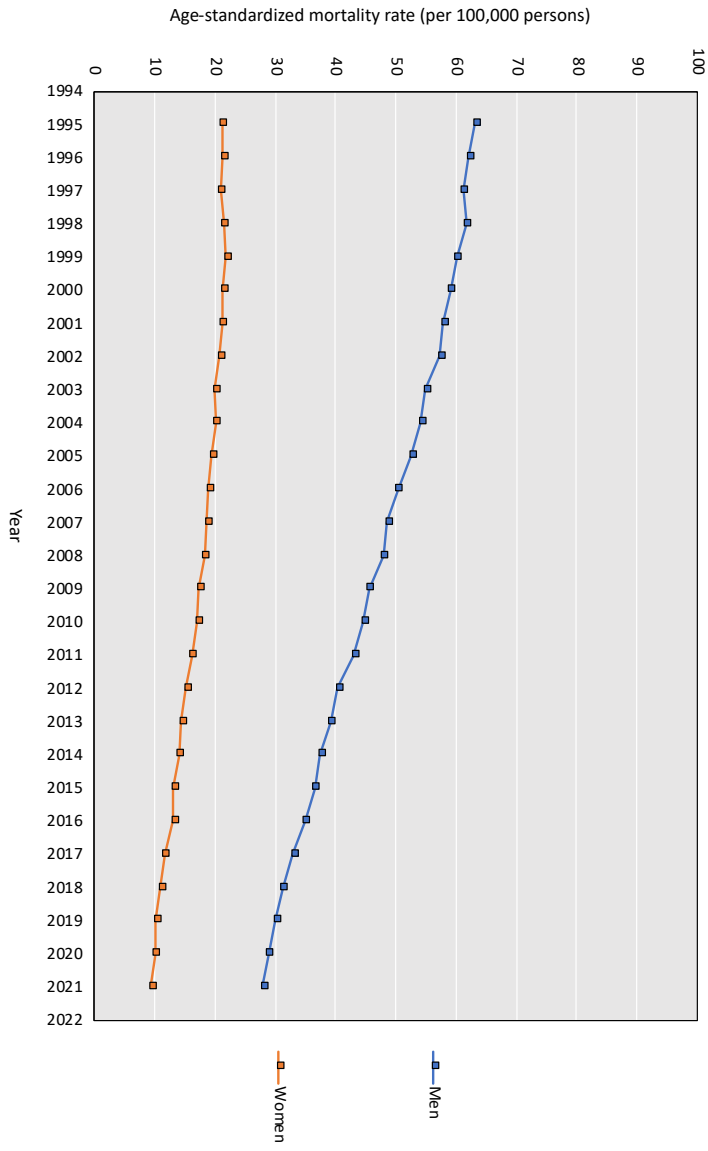
(A) Oral cavity and pharynx (C00-14)

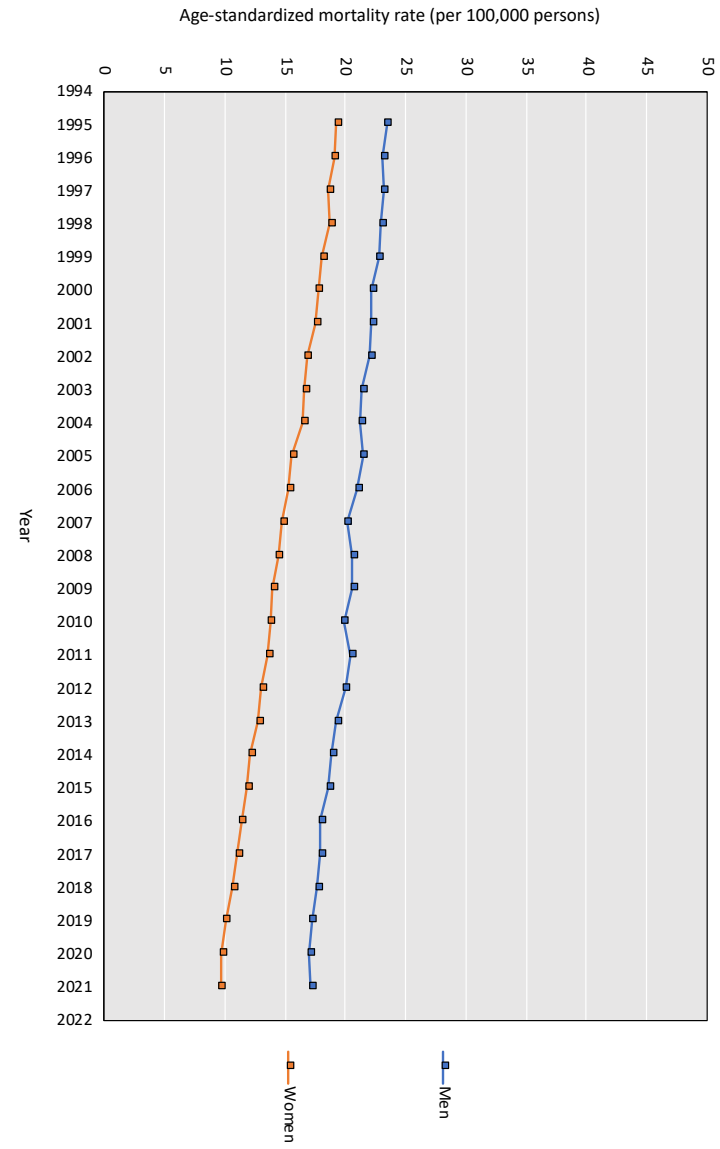
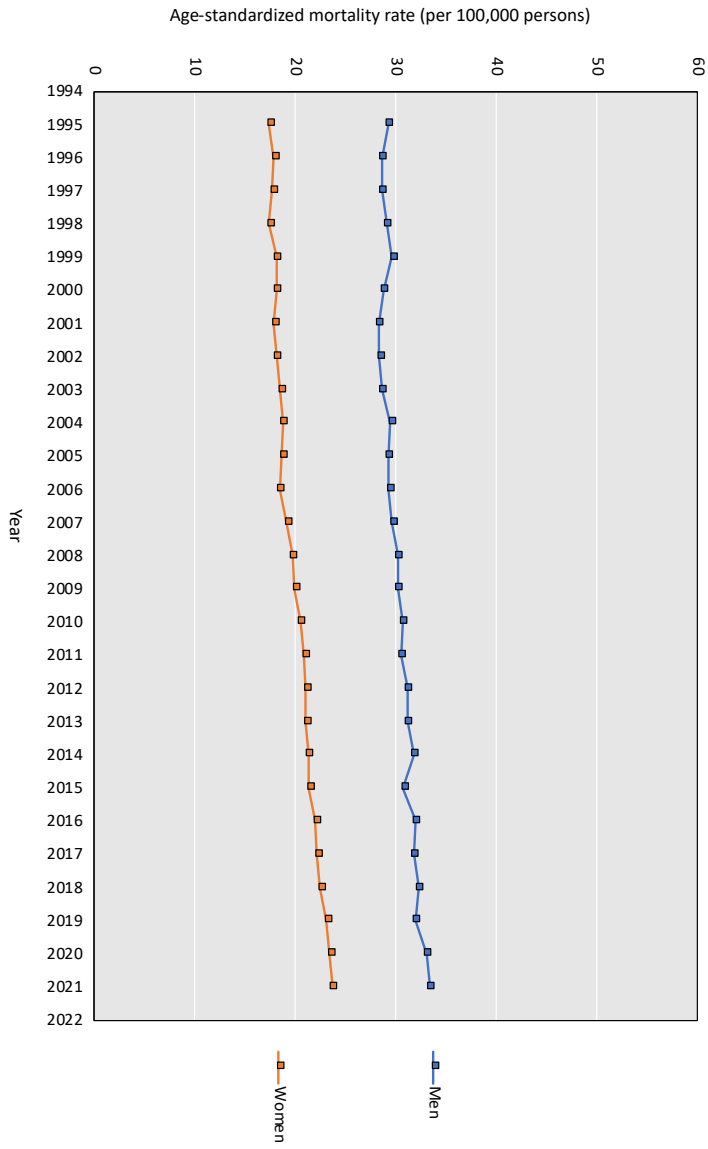


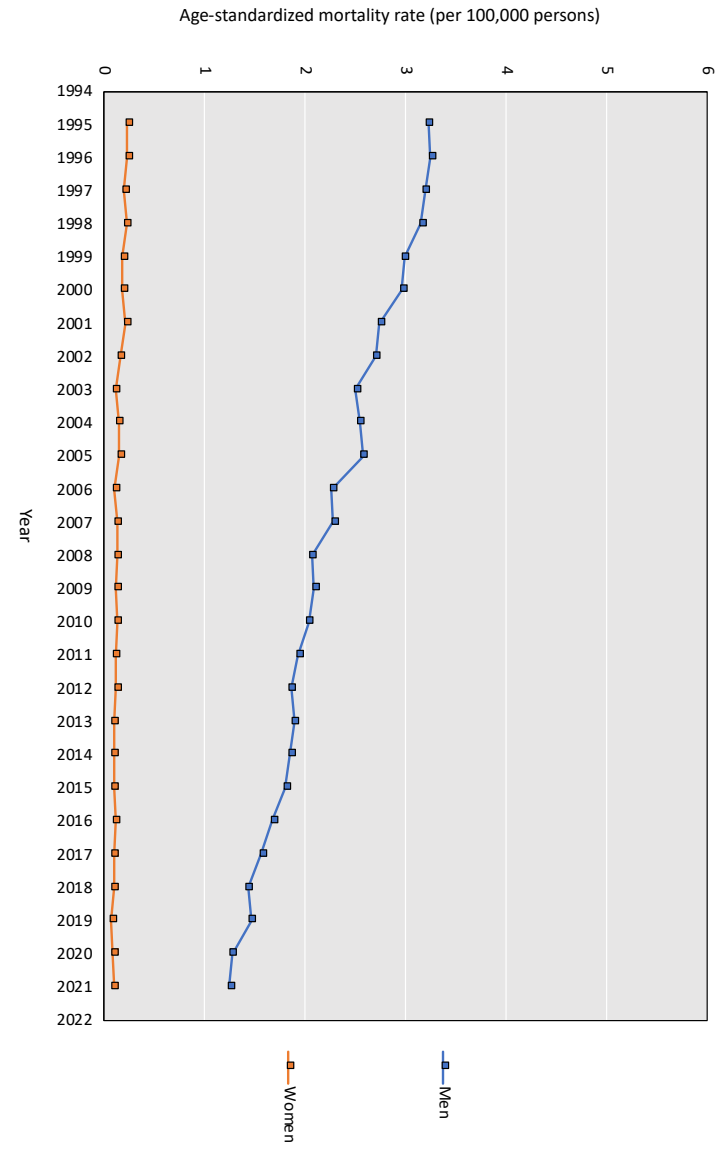
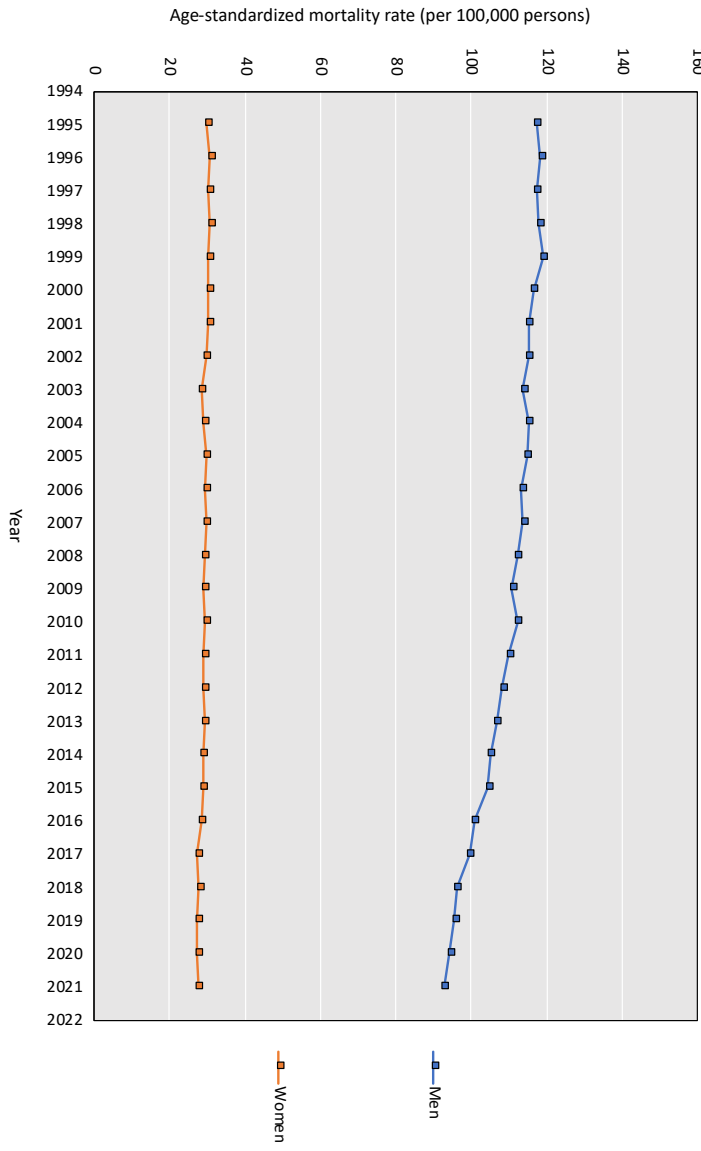
(B) Esophagus (C15)

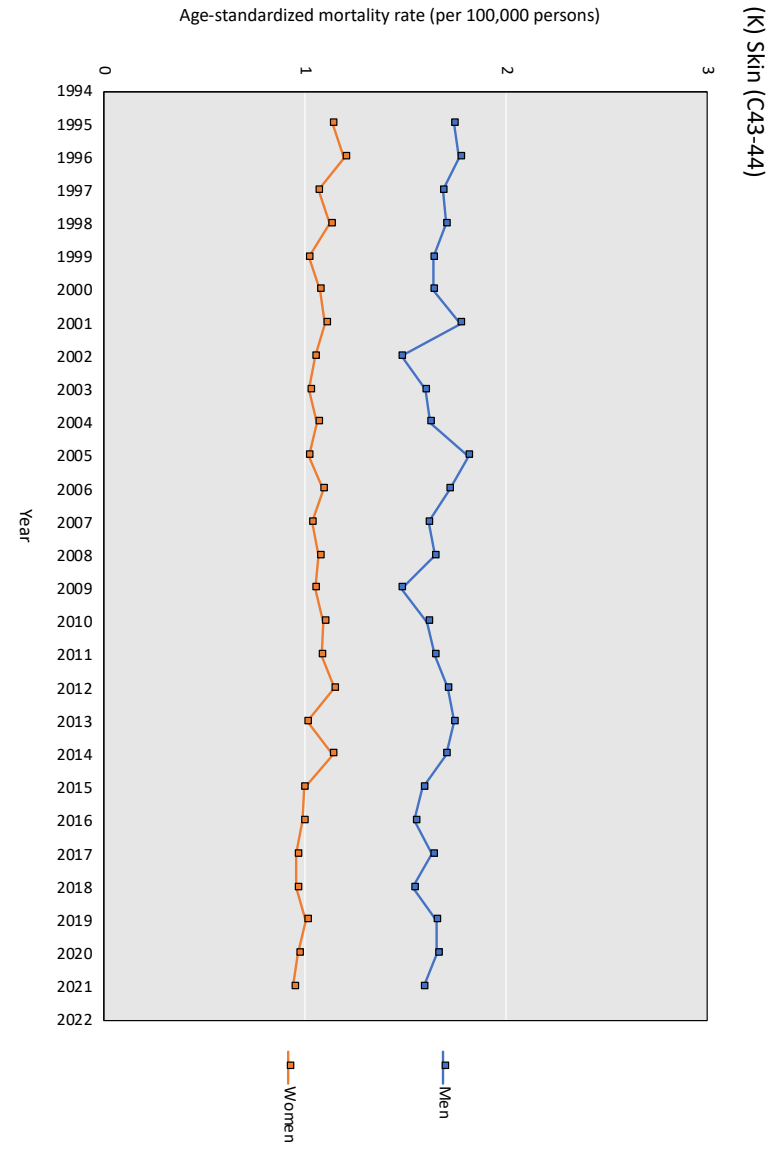
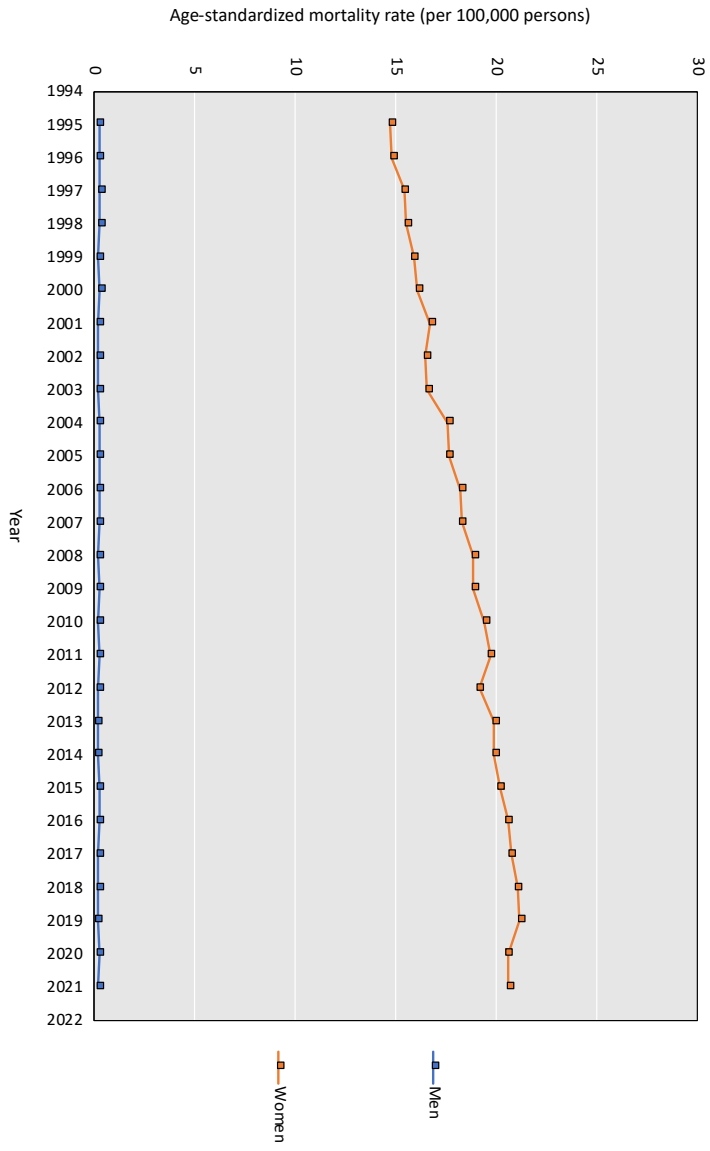


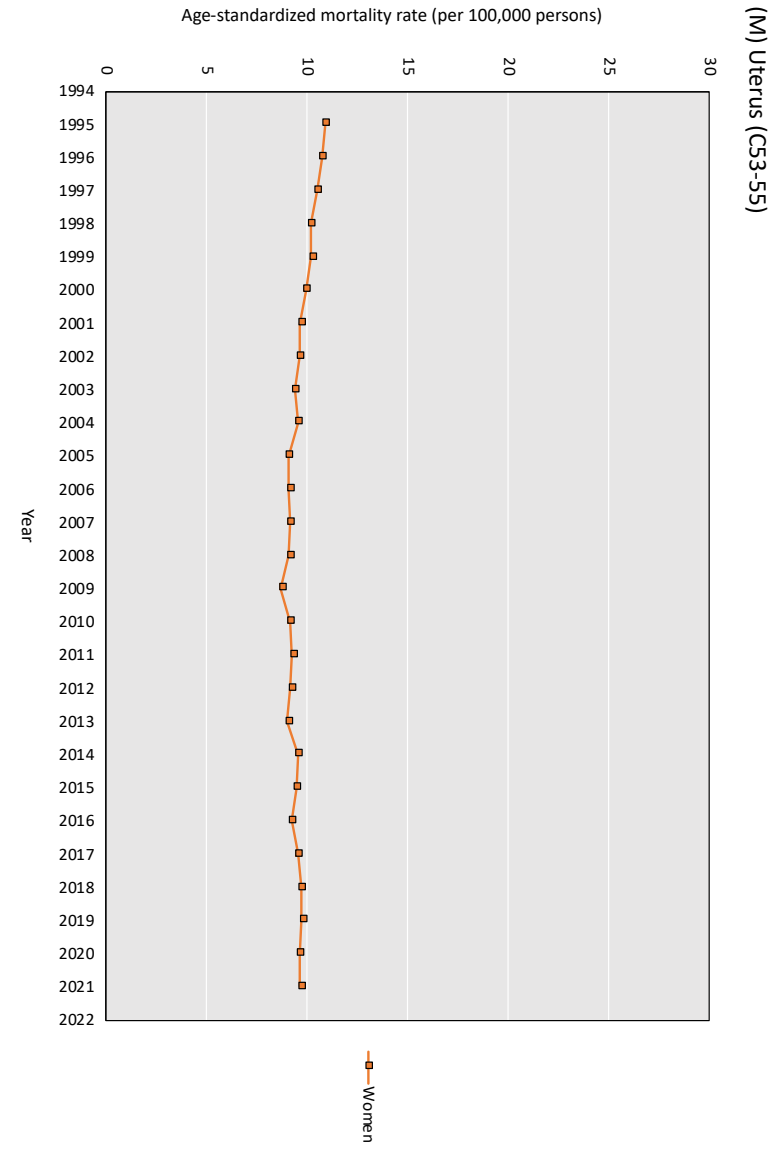
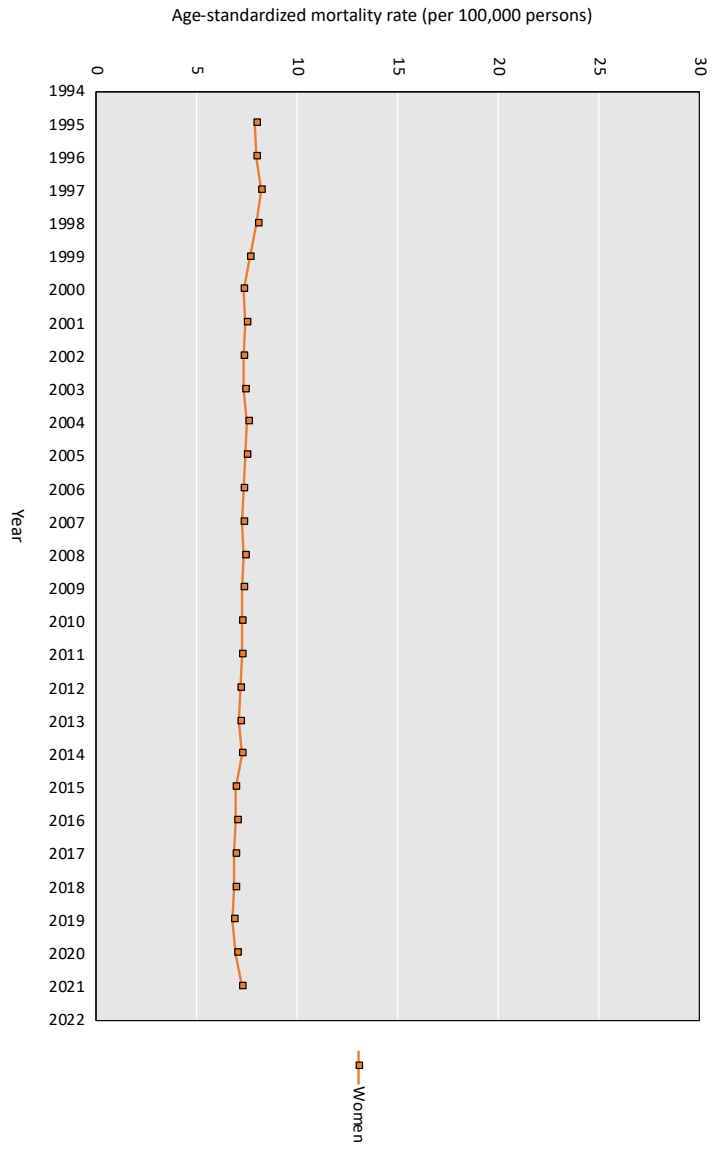




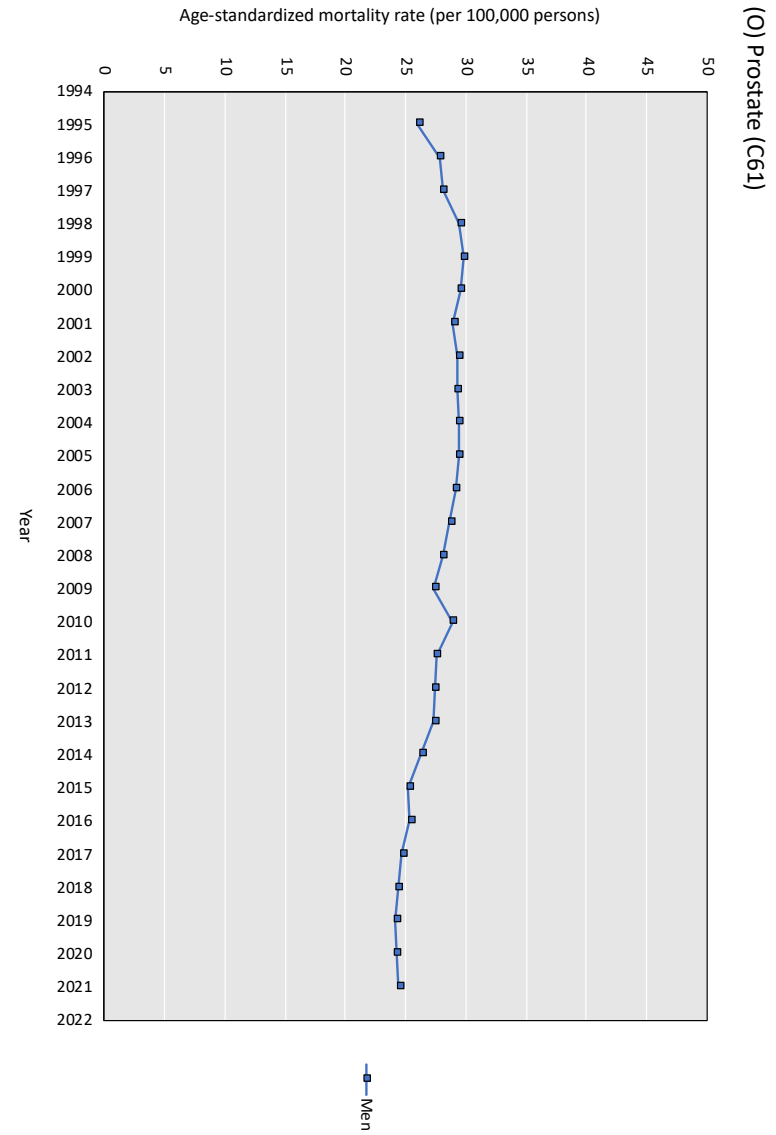
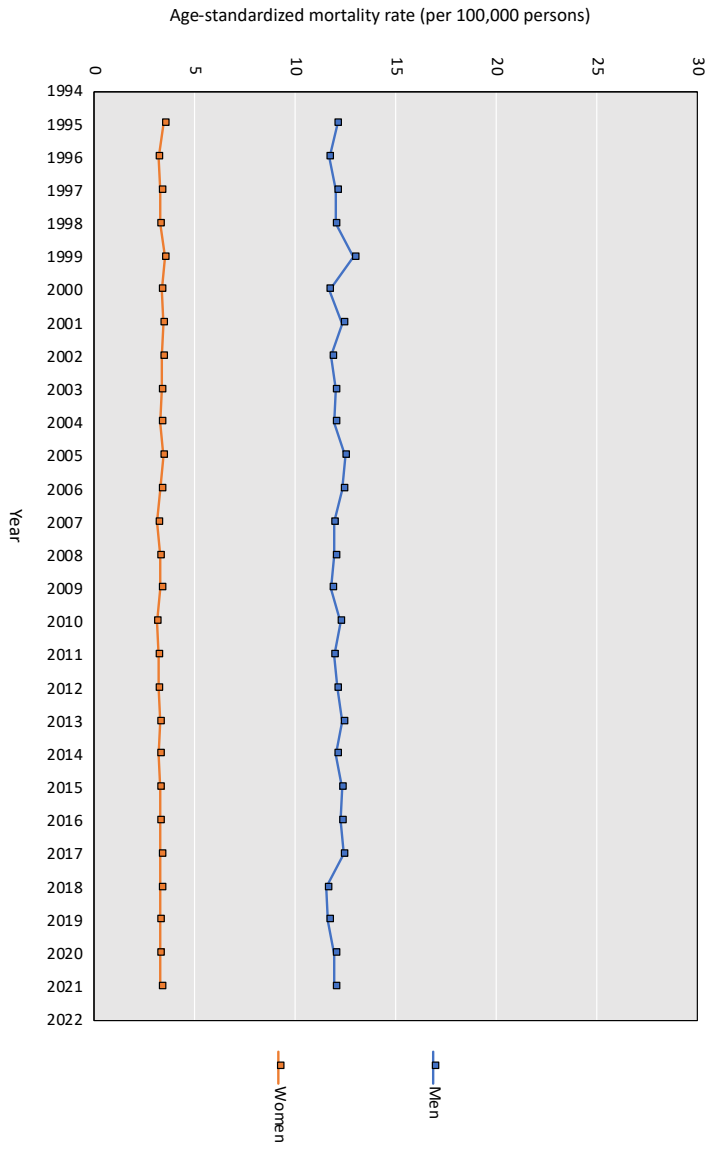


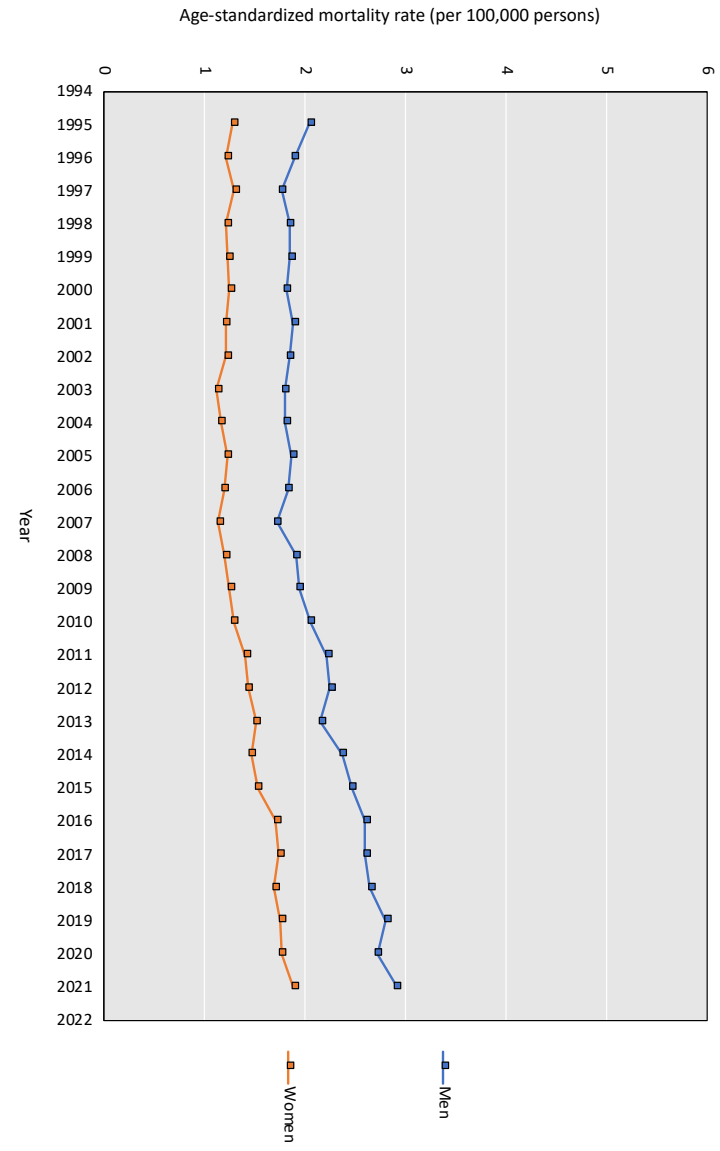
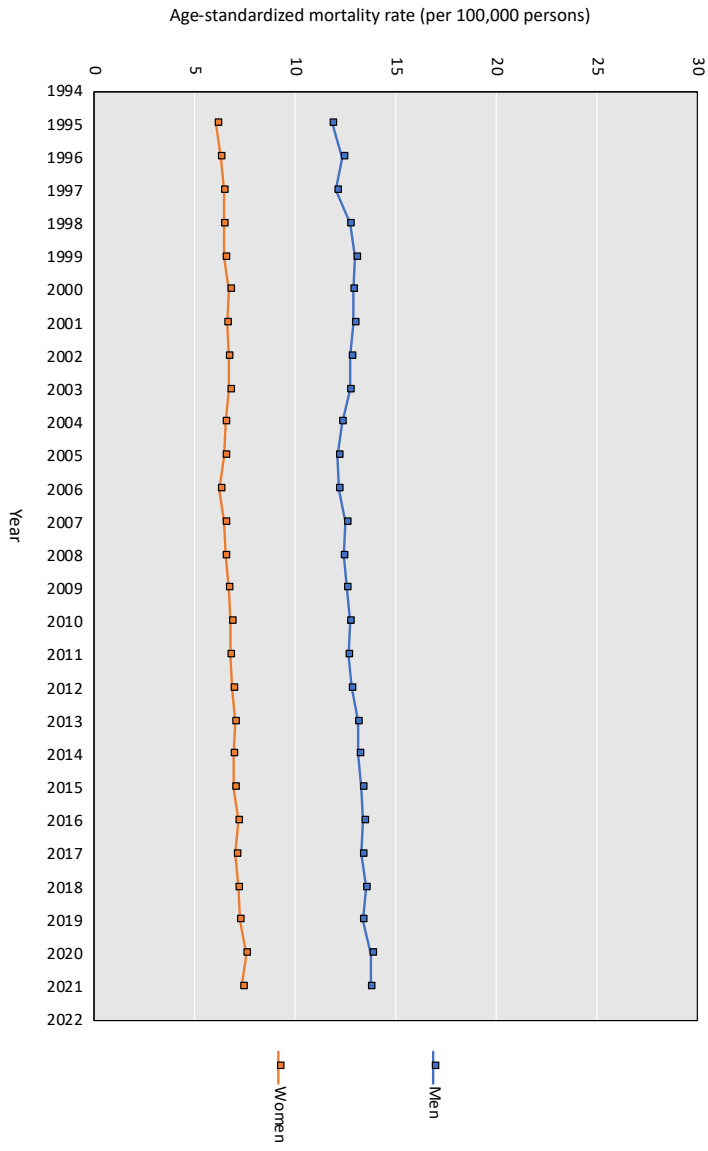




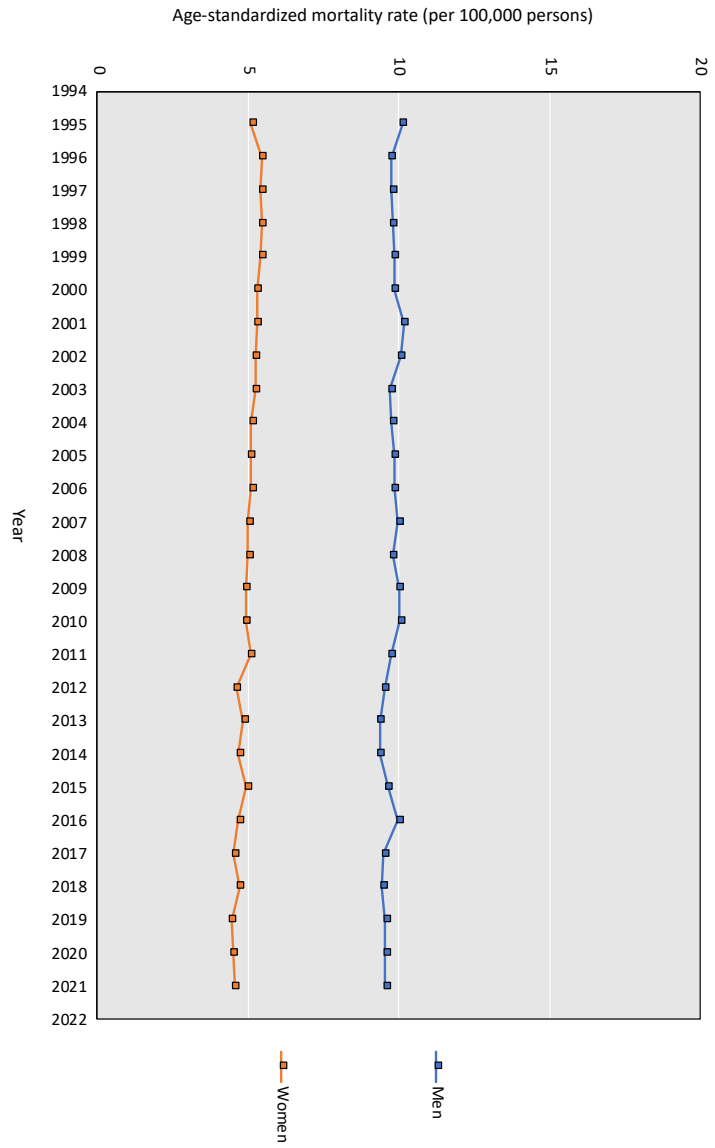








(S) Leukemia (C91-95)



Appendix Figure 3. Trends in cancer age-standardized mortality rates by cancer site between 1995 and 2021