

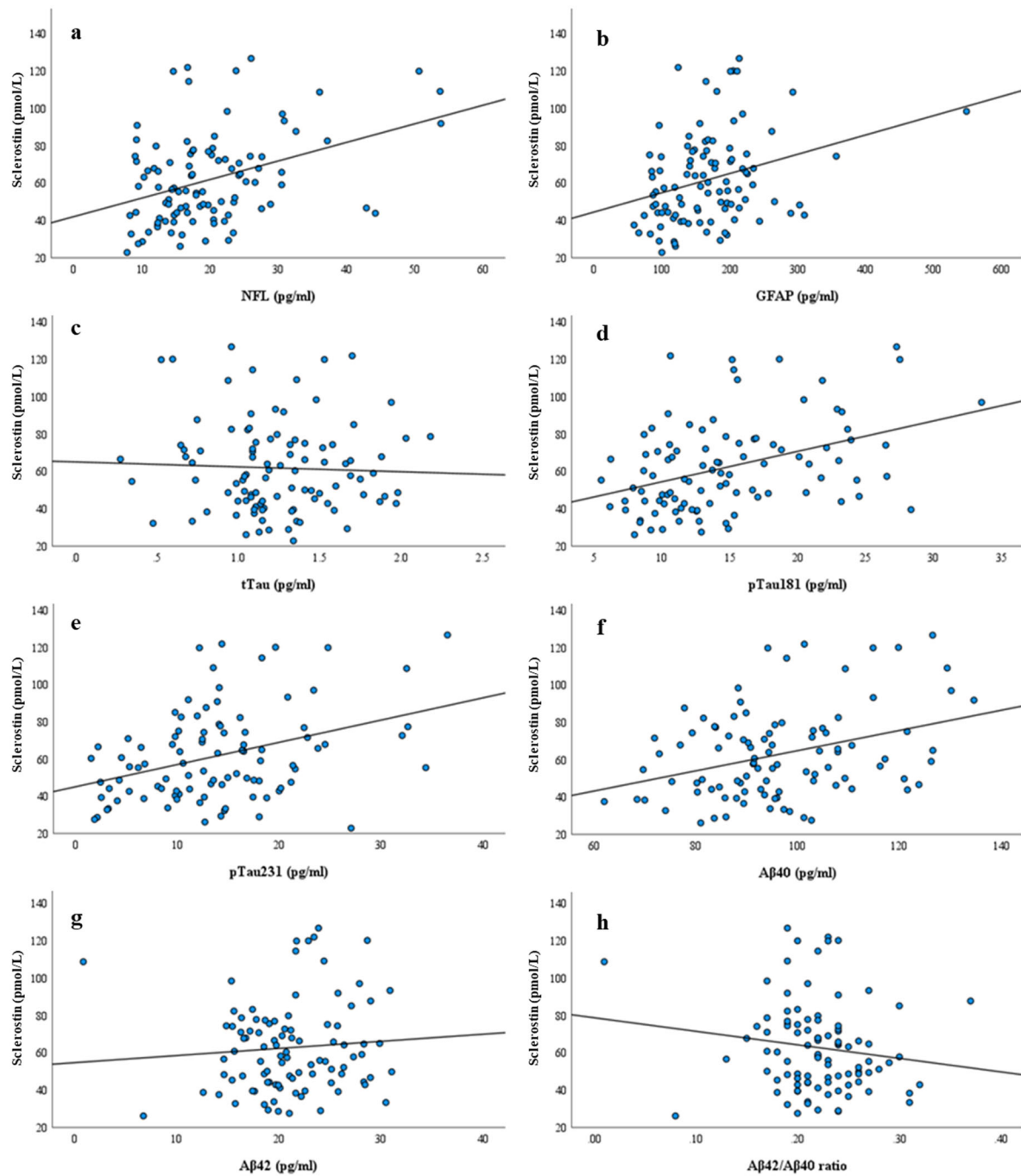
Supplementary Content

Supplementary Figures:

Supplementary Figure 1. Spearman's analysis for the correlation of plasma sclerostin with NFL, GFAP, t-tau, p-tau181 and p-tau231, A β 42, A β 40 and A β 42/A β 40 in all participants.

Supplementary Figure 2. Spearman's analysis for the correlation of plasma sclerostin and SUVR.

Supplementary Figure 1. Spearman's analysis for the correlation of plasma sclerostin with NFL, GFAP, t-tau, p-tau181 and p-tau231, A β 42, A β 40 and A β 42/A β 40 in all participants. Schematic representation of unadjusted correlation coefficients (ρ) and P values between sclerostin and AD-related biomarkers were calculated using Spearman's correlation.



Supplementary Figure 2. Association between plasma sclerostin and SUVR. Correlation coefficients (ρ) and P values were calculated using Spearman's correlation analysis. SUVR, standard uptake value ratio.

