
Supplementary information

Identification of an alternative triglyceride biosynthesis pathway

In the format provided by the authors and unedited

Supplementary Information Figure 1 - uncropped/unprocessed Western blots

Fig. 1c

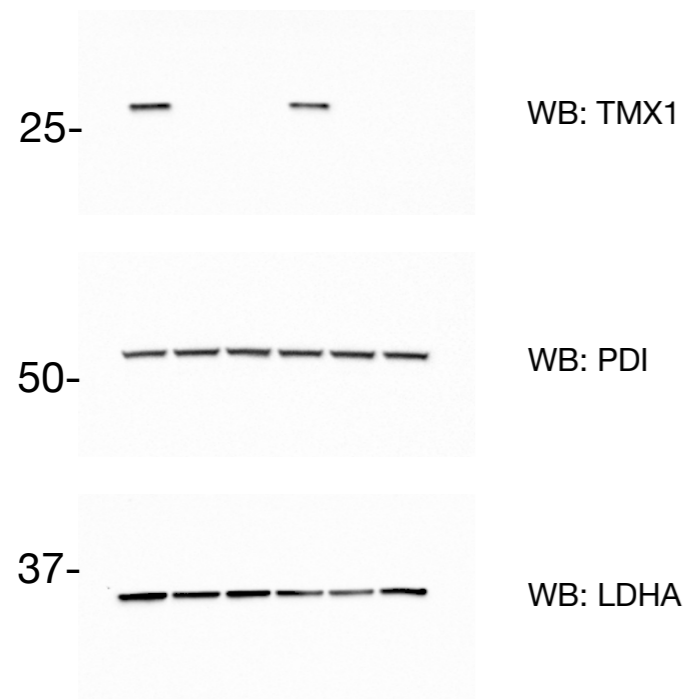


Fig. 2e

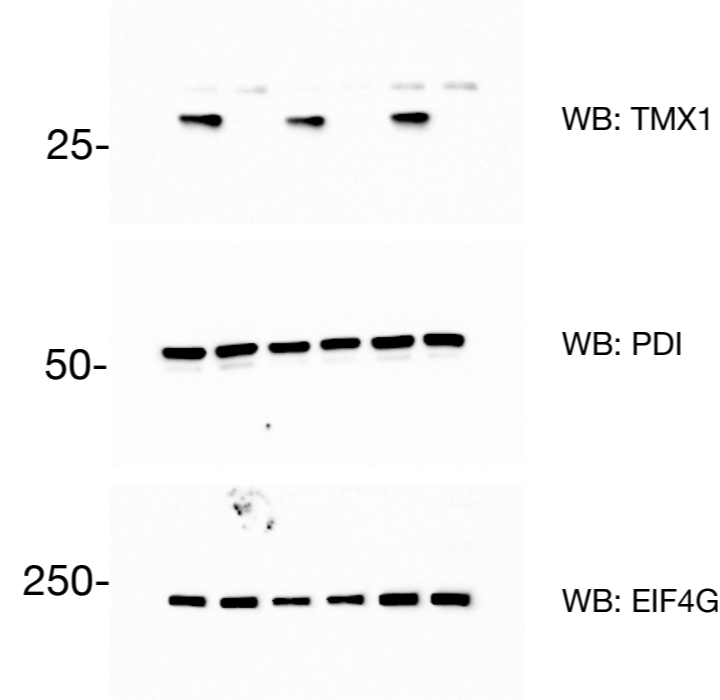


Fig. 3a

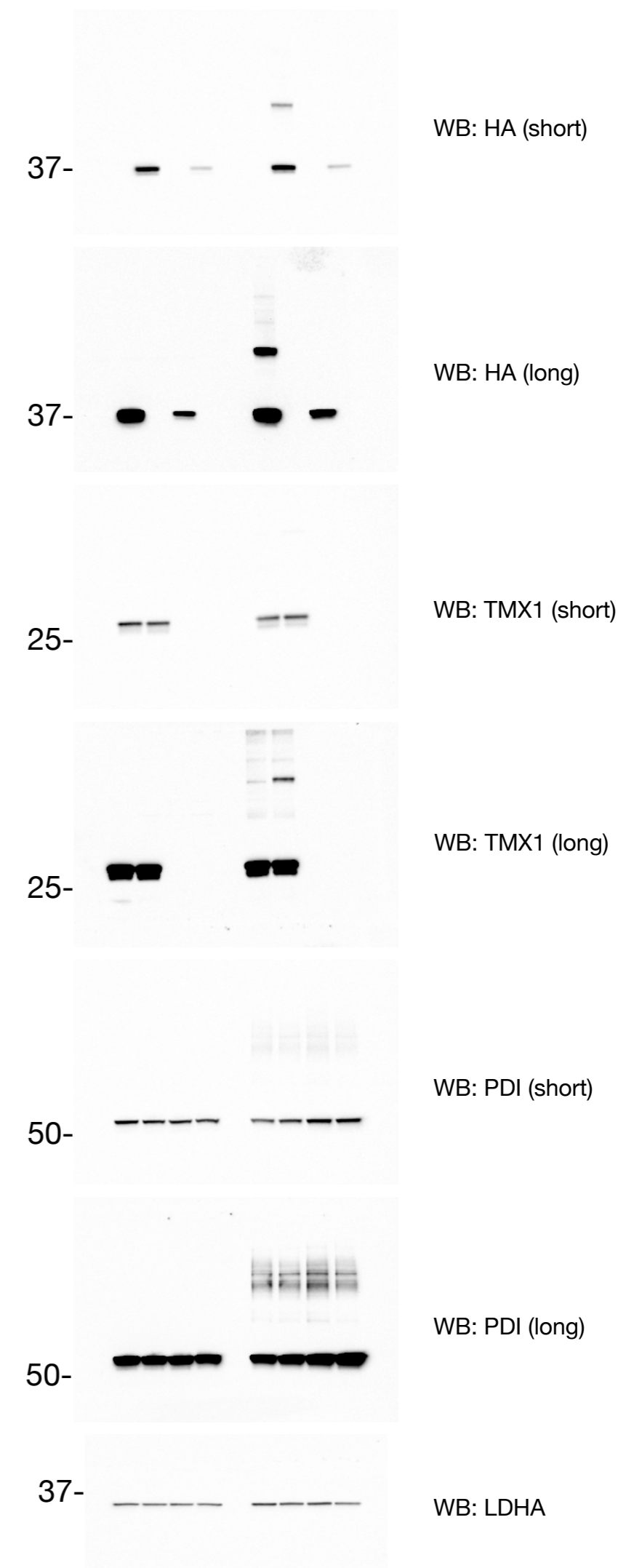


Fig. 3b

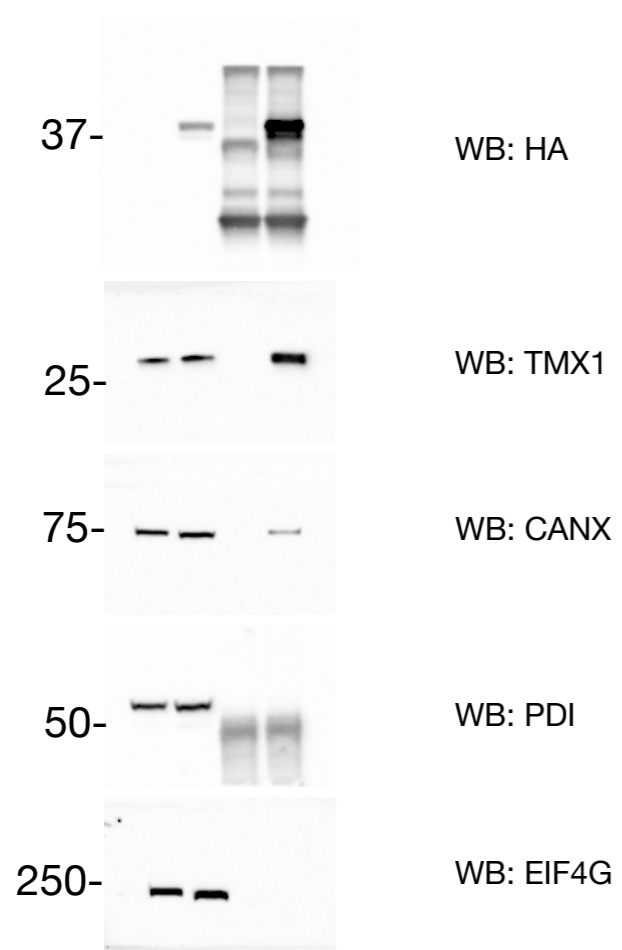


Fig. 3d

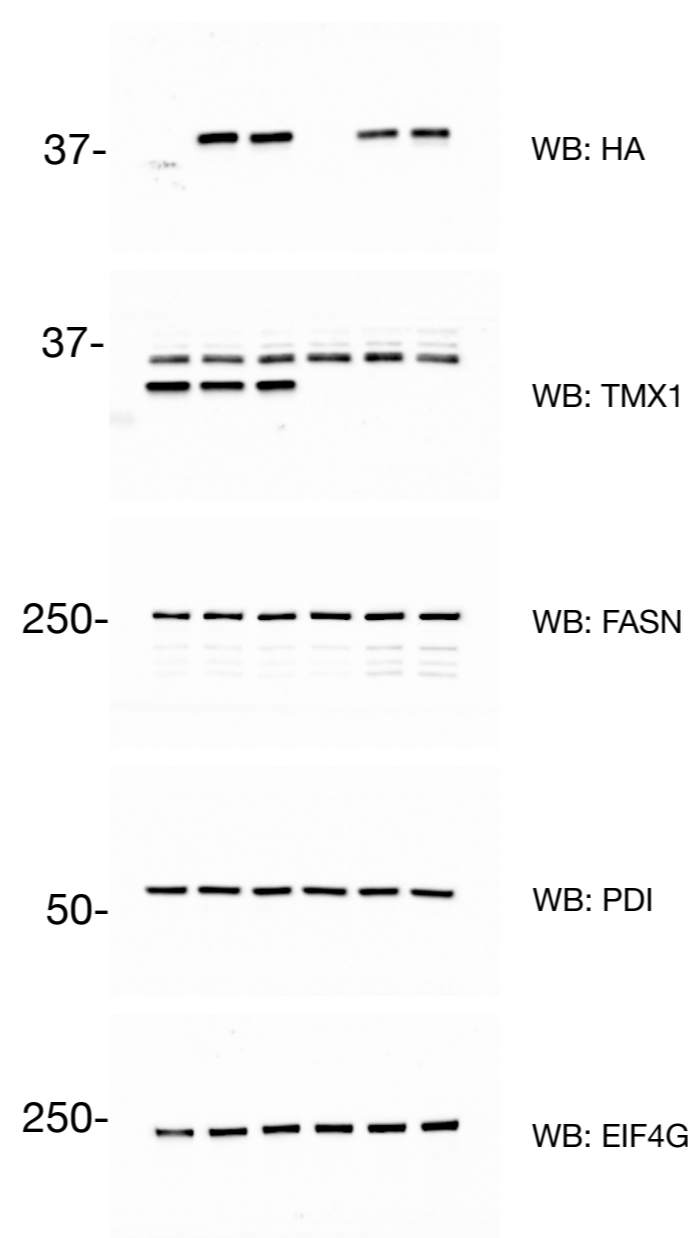


Fig. 4e

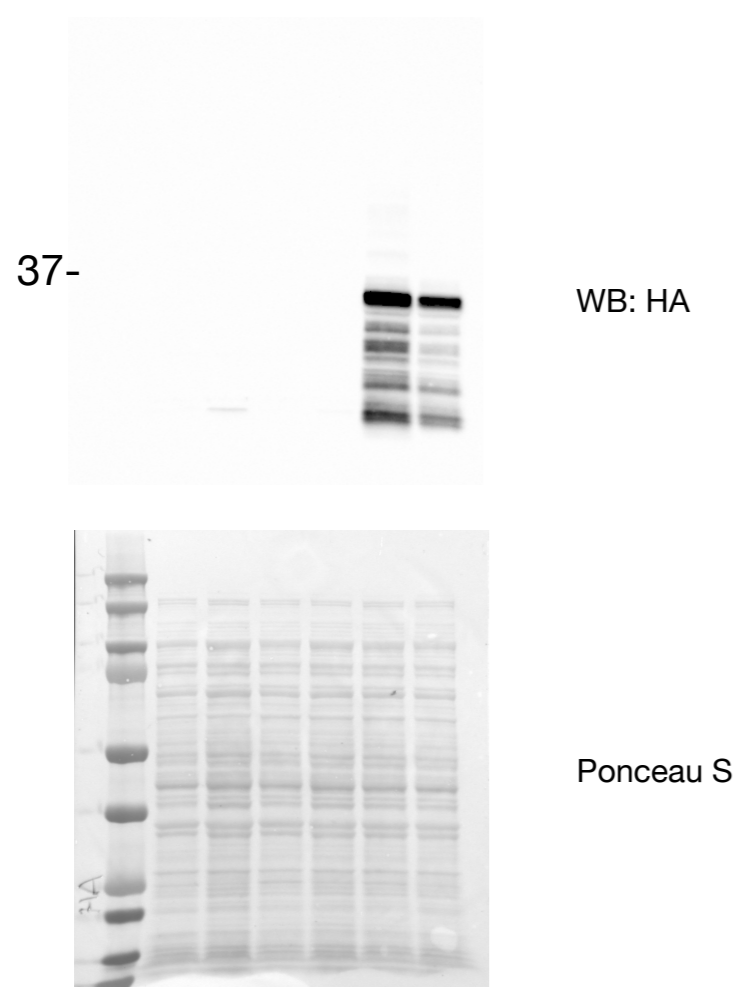
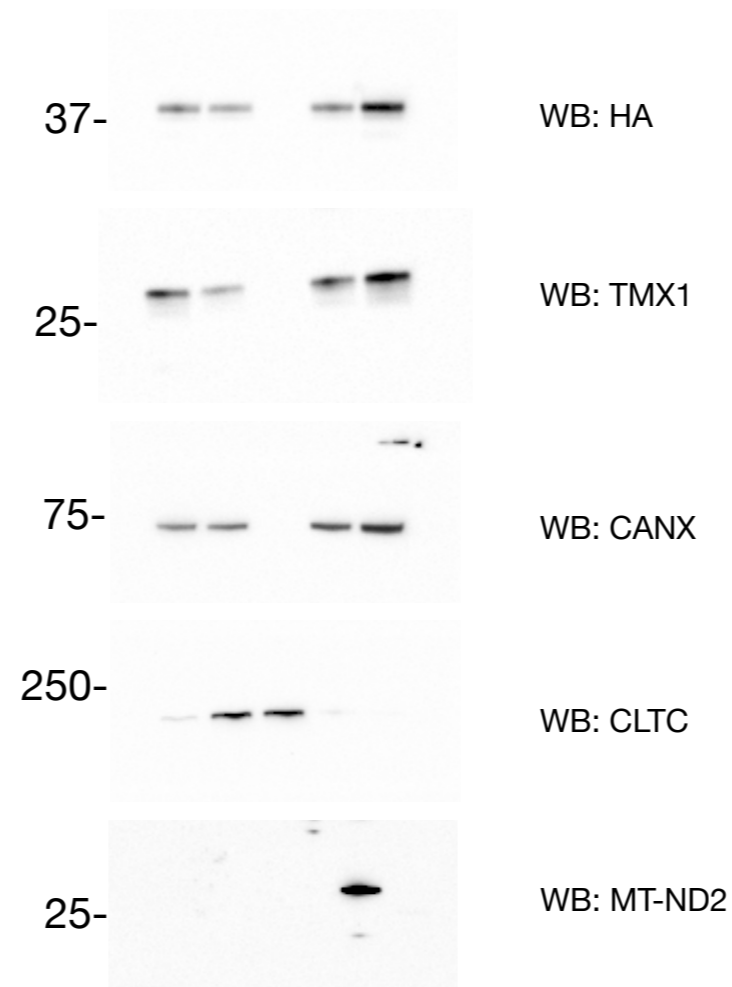
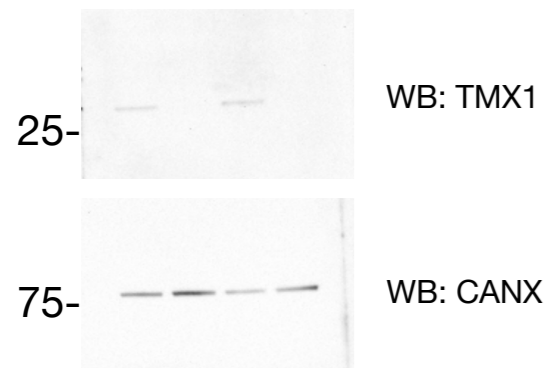


Fig. 5a

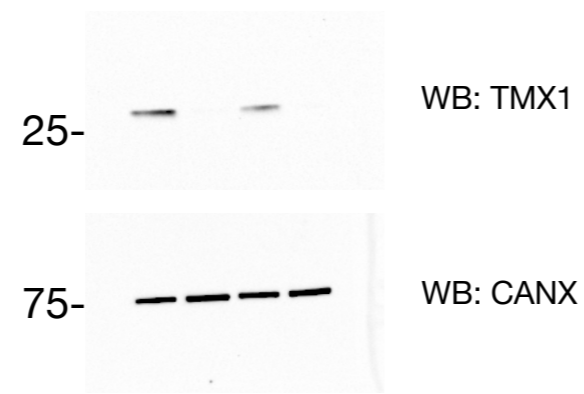


Supplementary Information Figure 1 (continued)

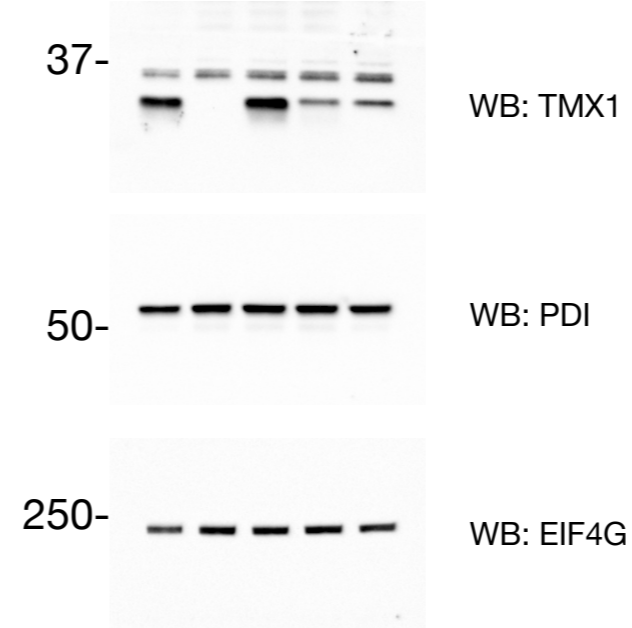
Extended Data Fig. 2b - A549



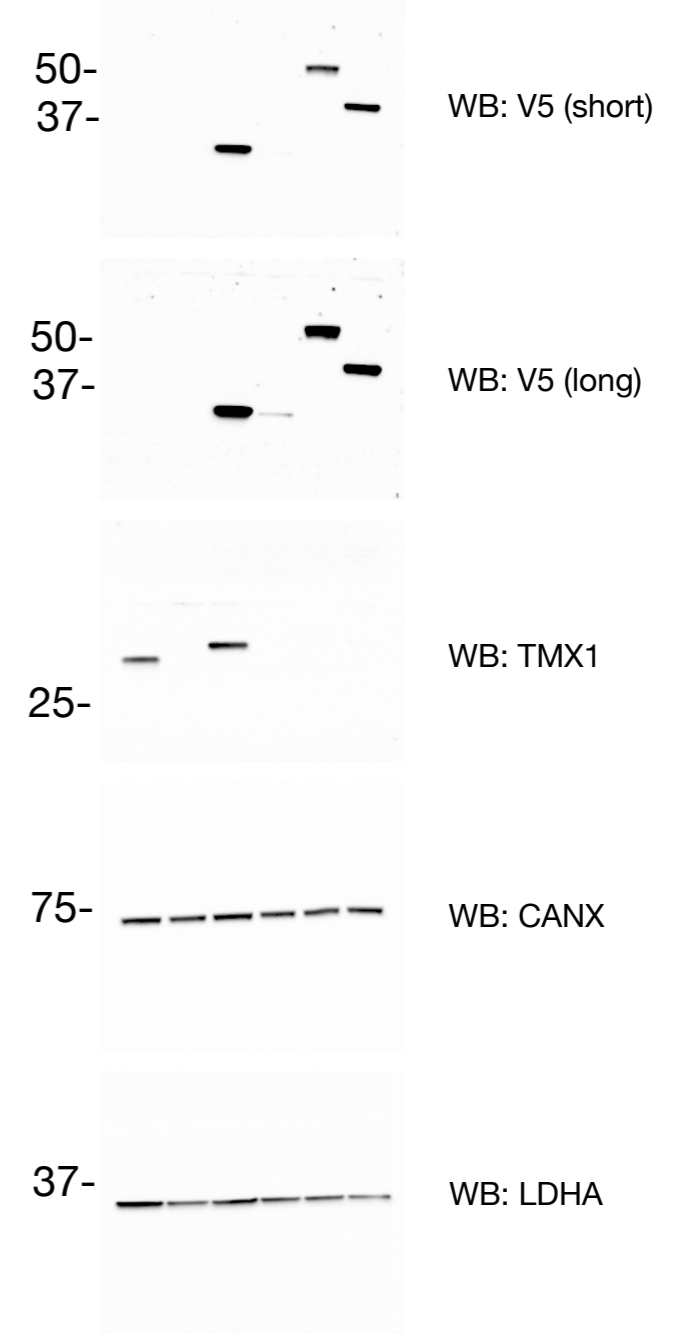
Extended Data Fig. 2b - U2OS



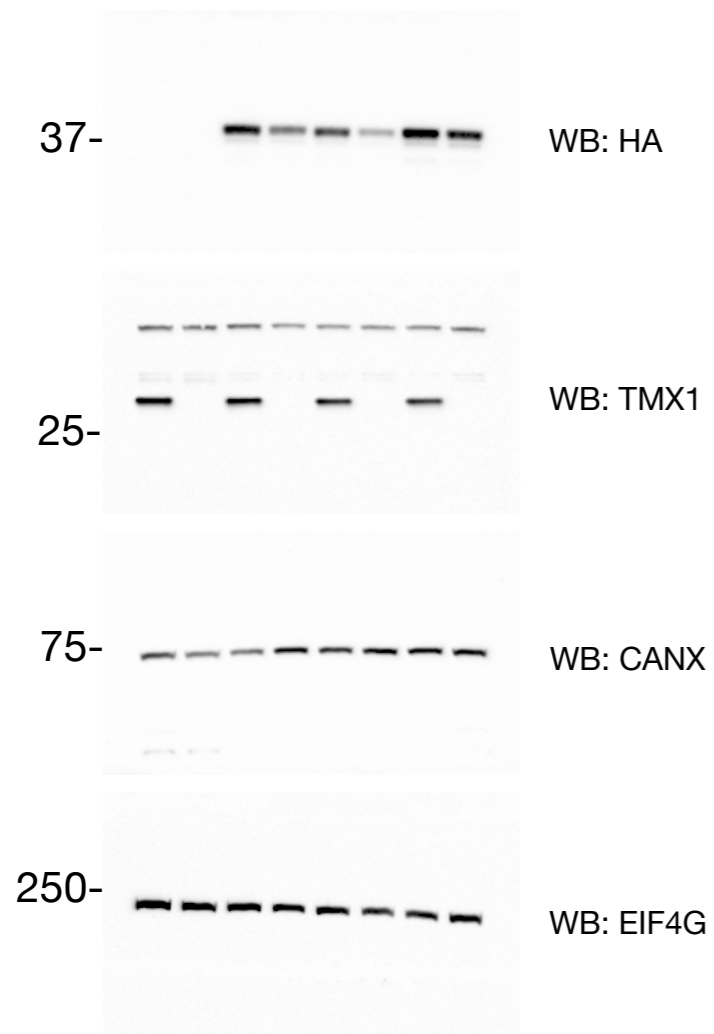
Extended Data Fig. 2e



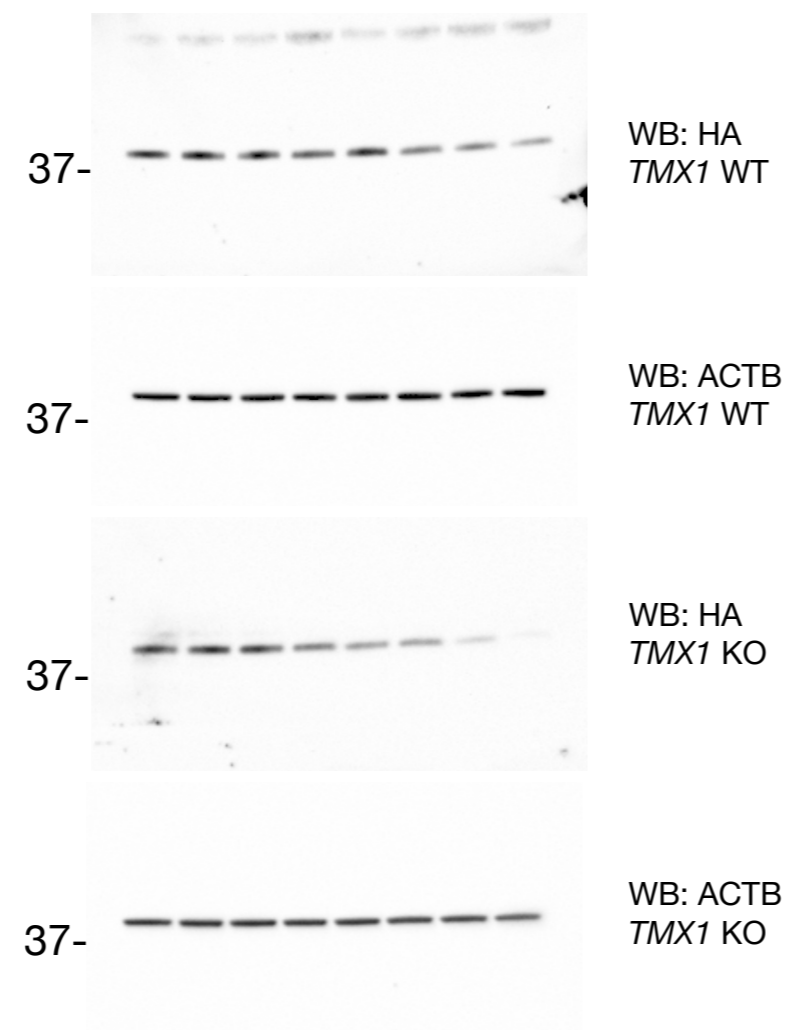
Extended Data Fig. 2i



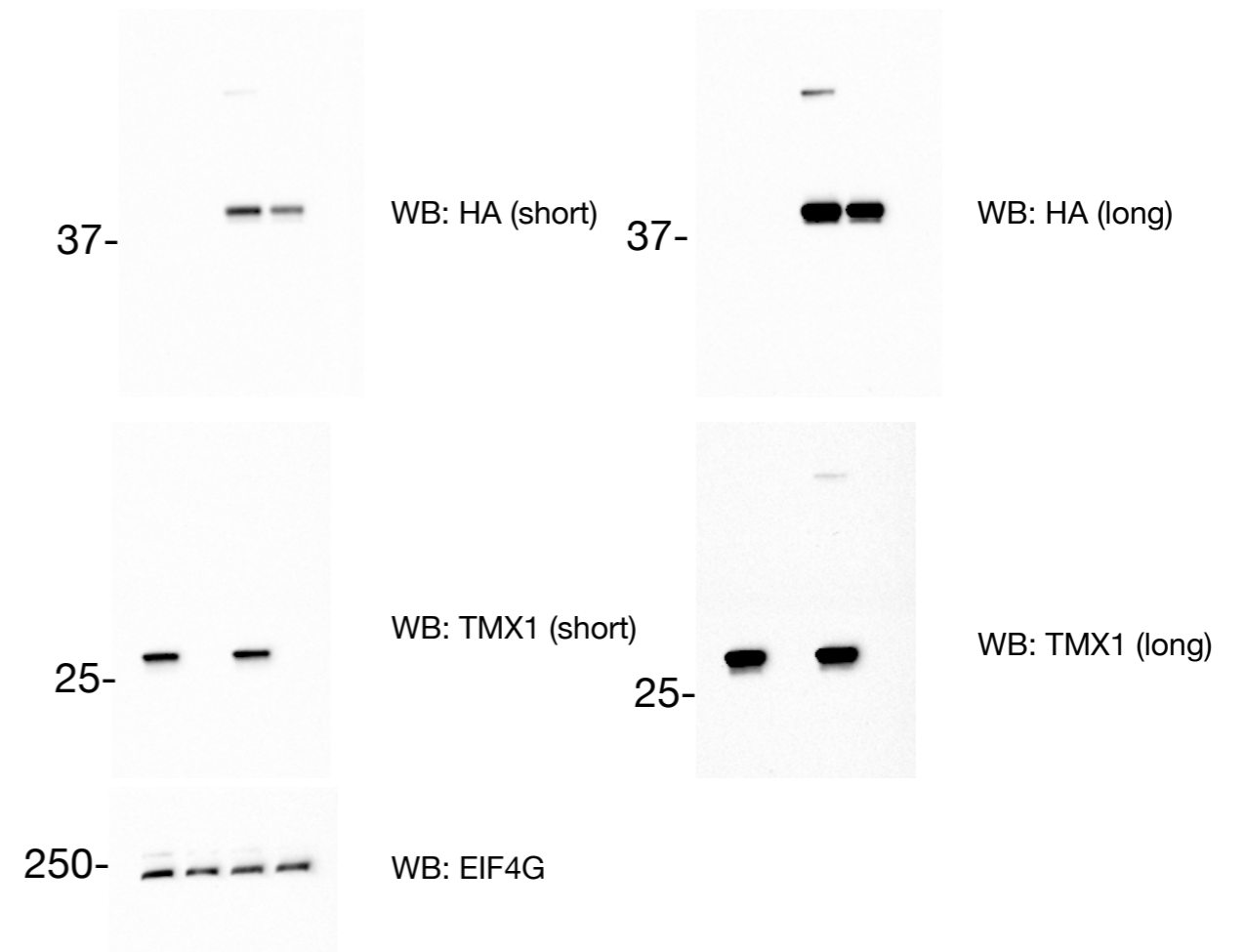
Extended Data Fig. 4b



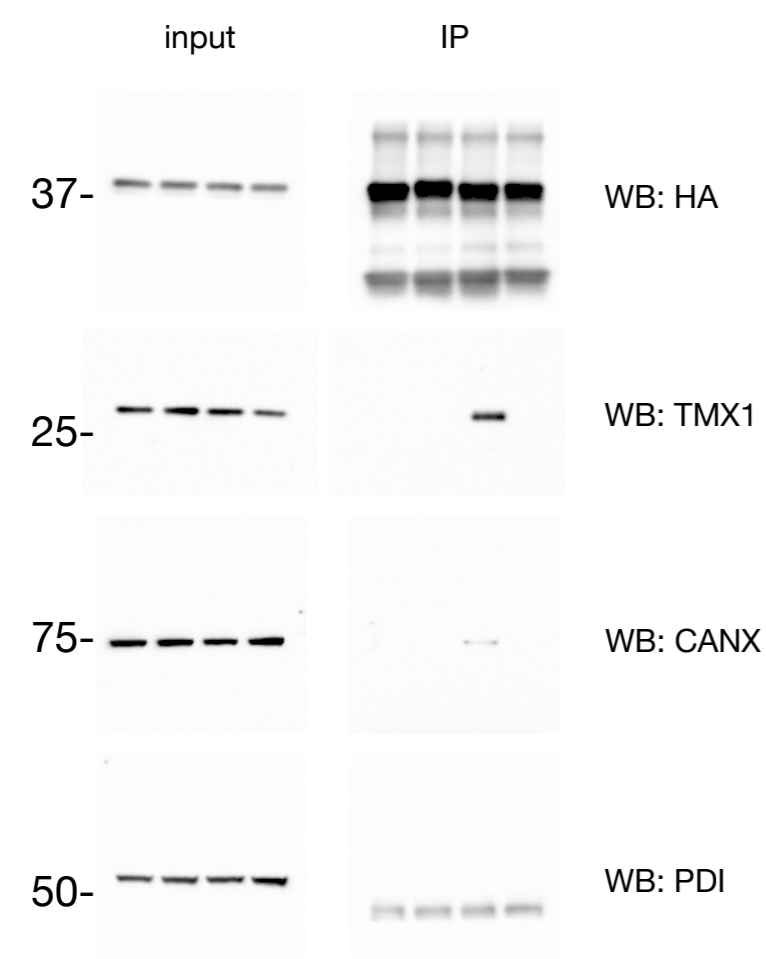
Extended Data Fig. 4c



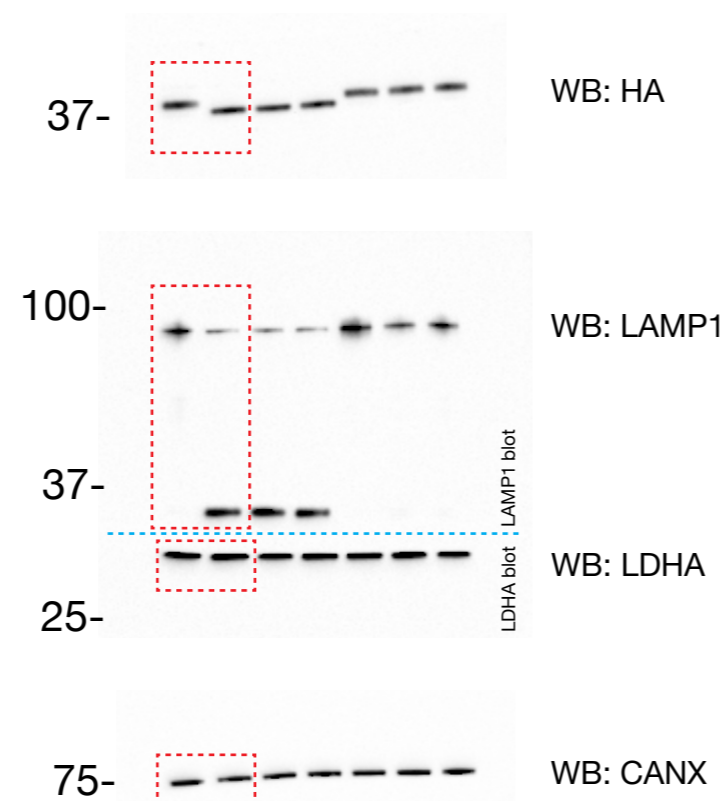
Extended Data Fig. 4d



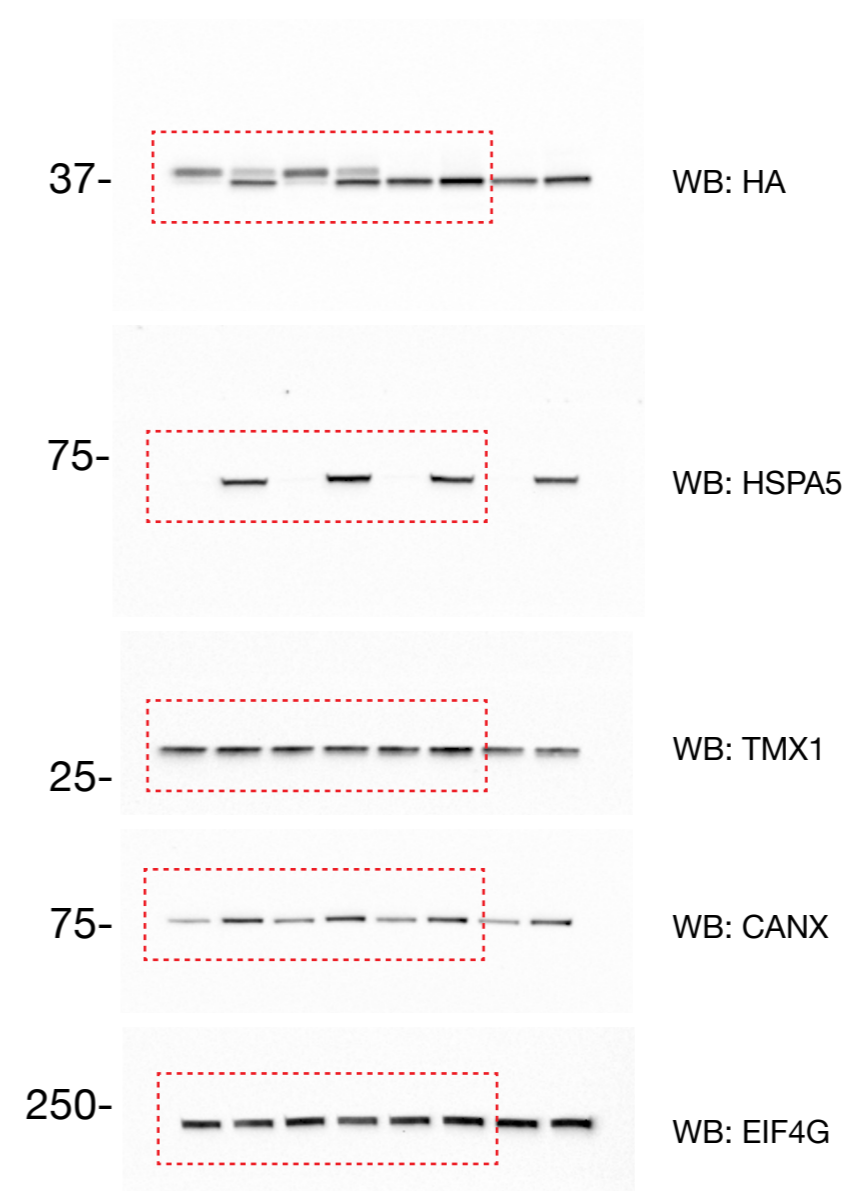
Extended Data Fig. 4f



Extended Data Fig. 4h

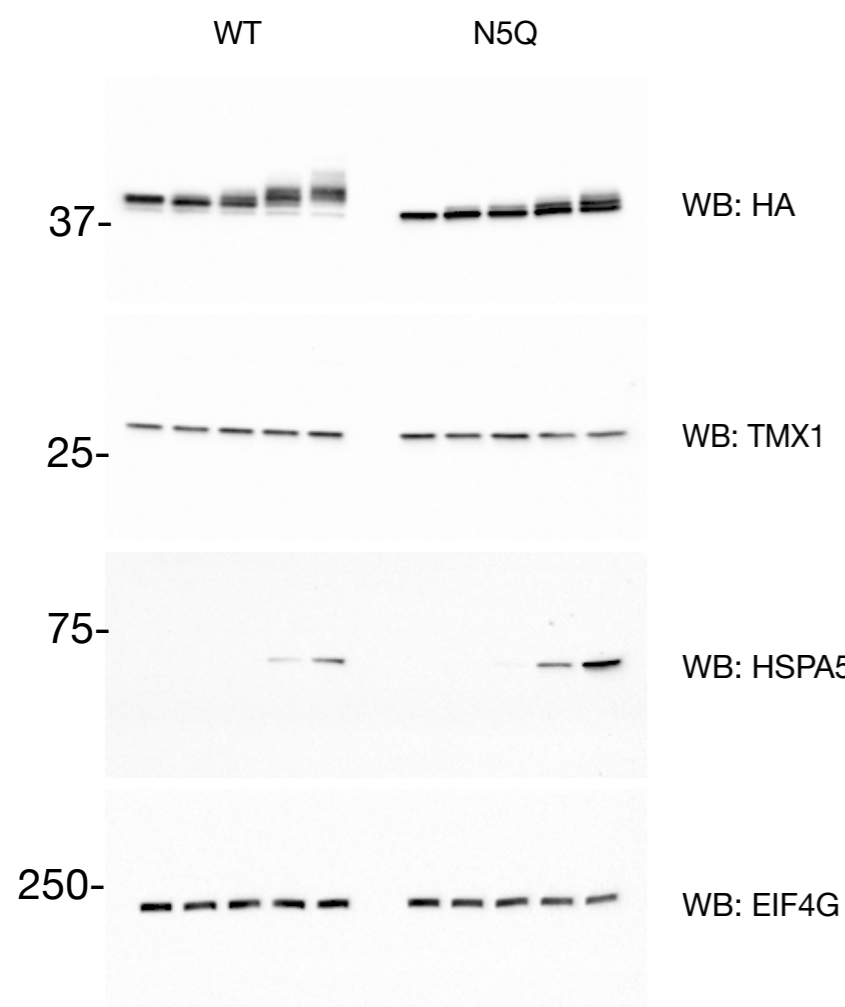


Extended Data Fig. 4i

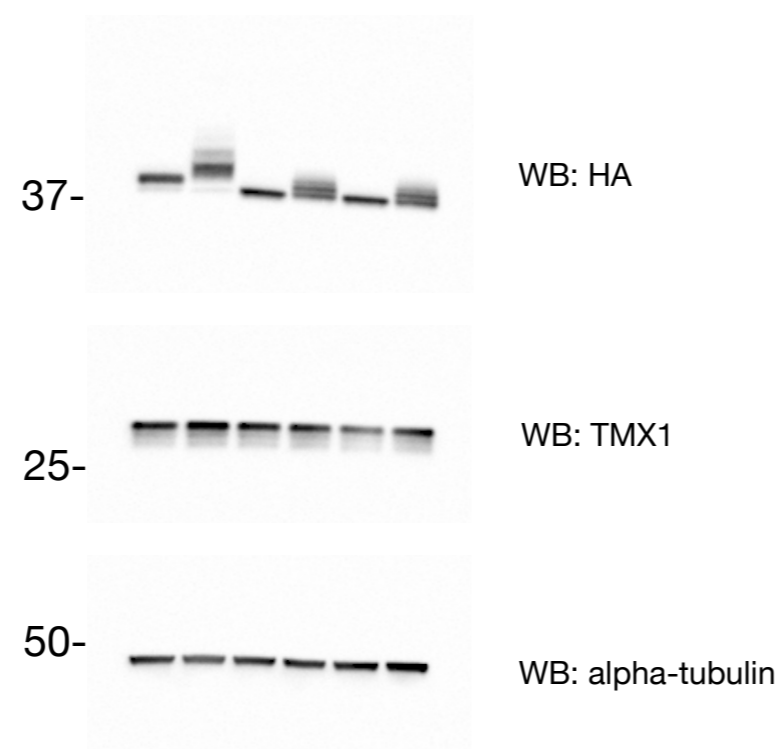


Supplementary Information Figure 1 (continued)

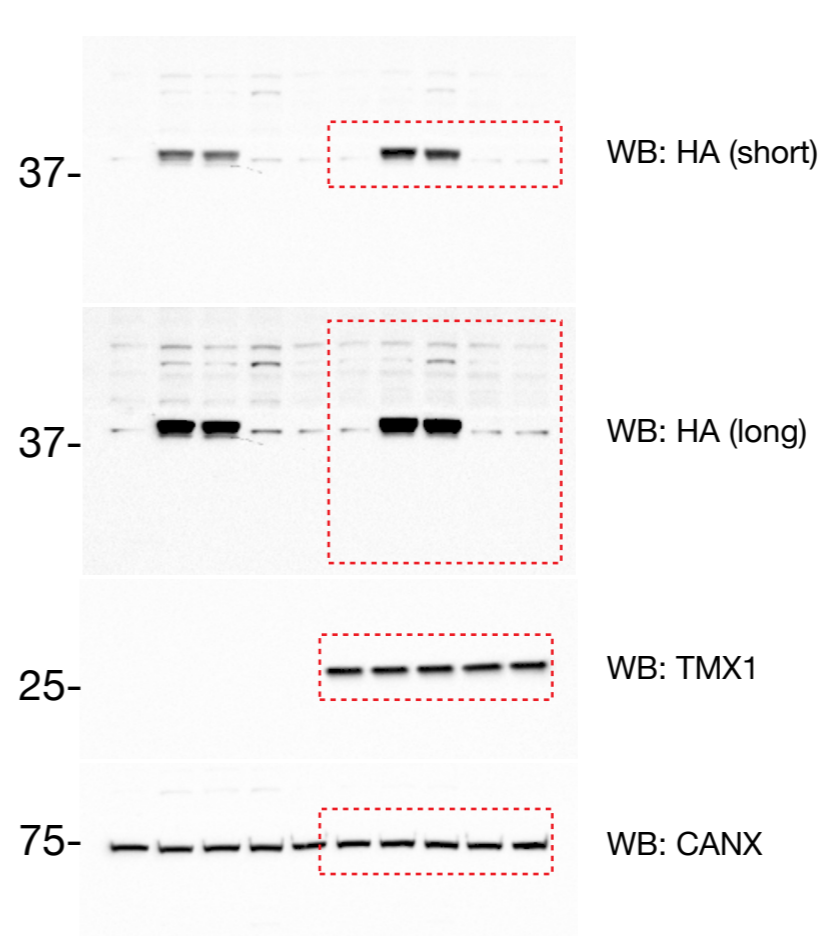
Extended Data Fig. 4j



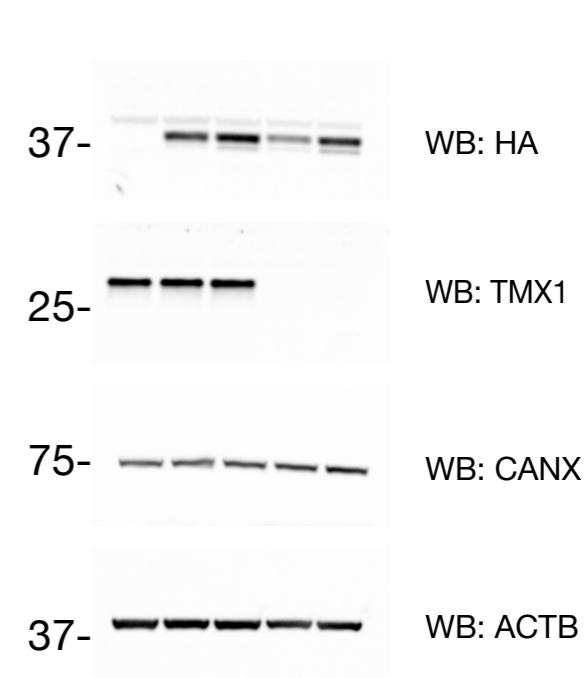
Extended Data Fig. 4k



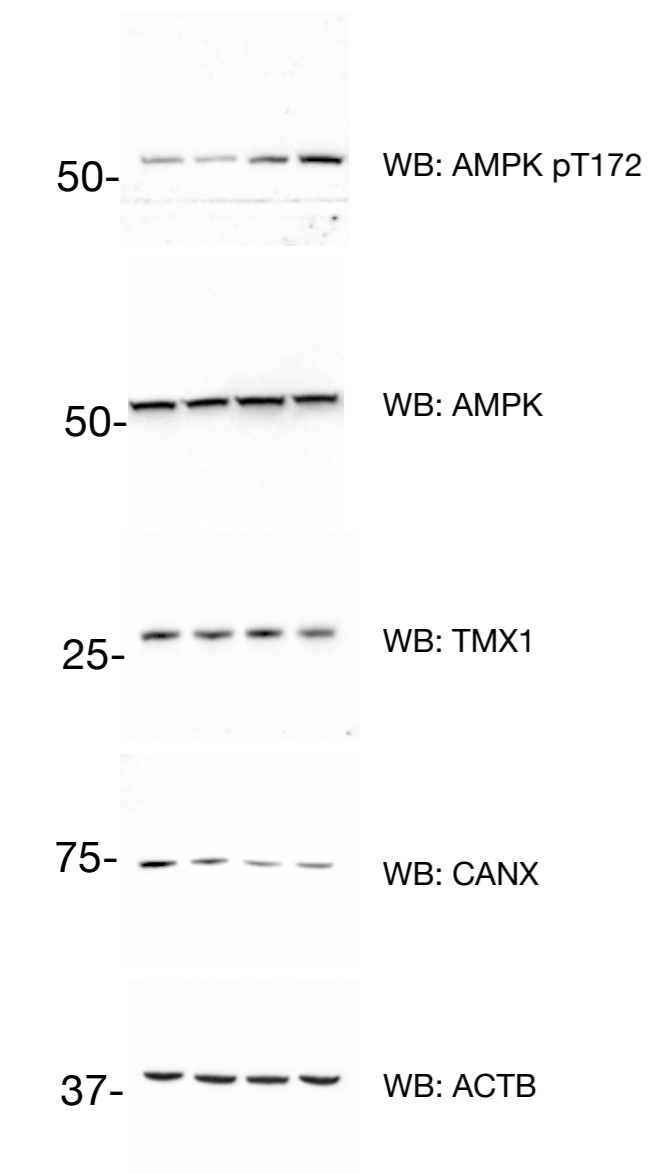
Extended Data Fig. 4o



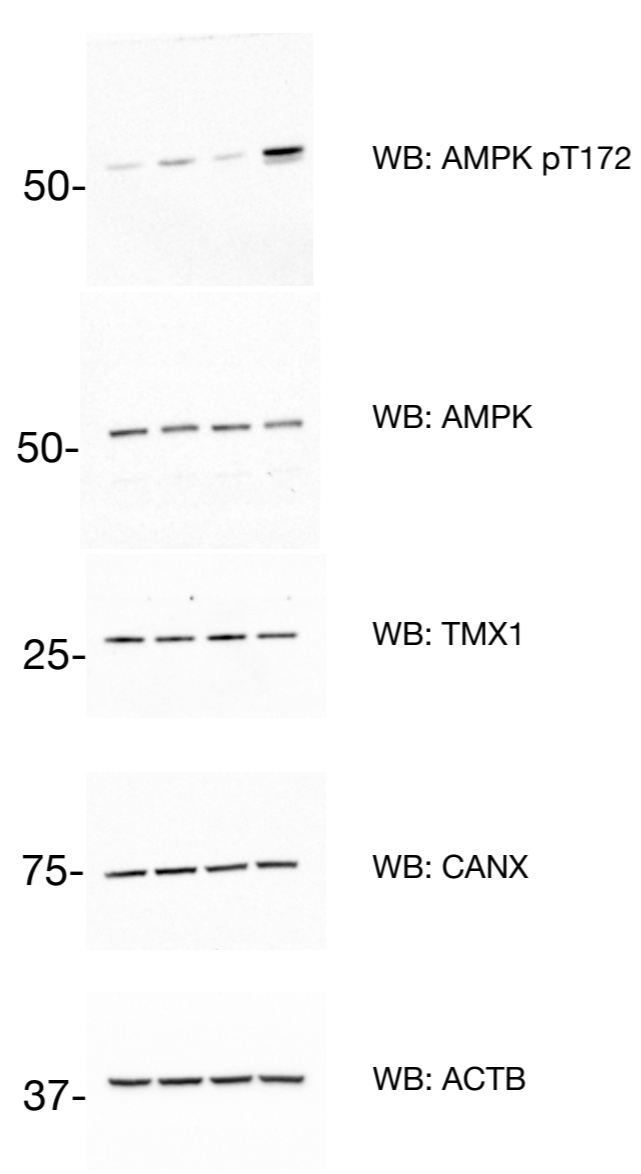
Extended Data Fig. 5b



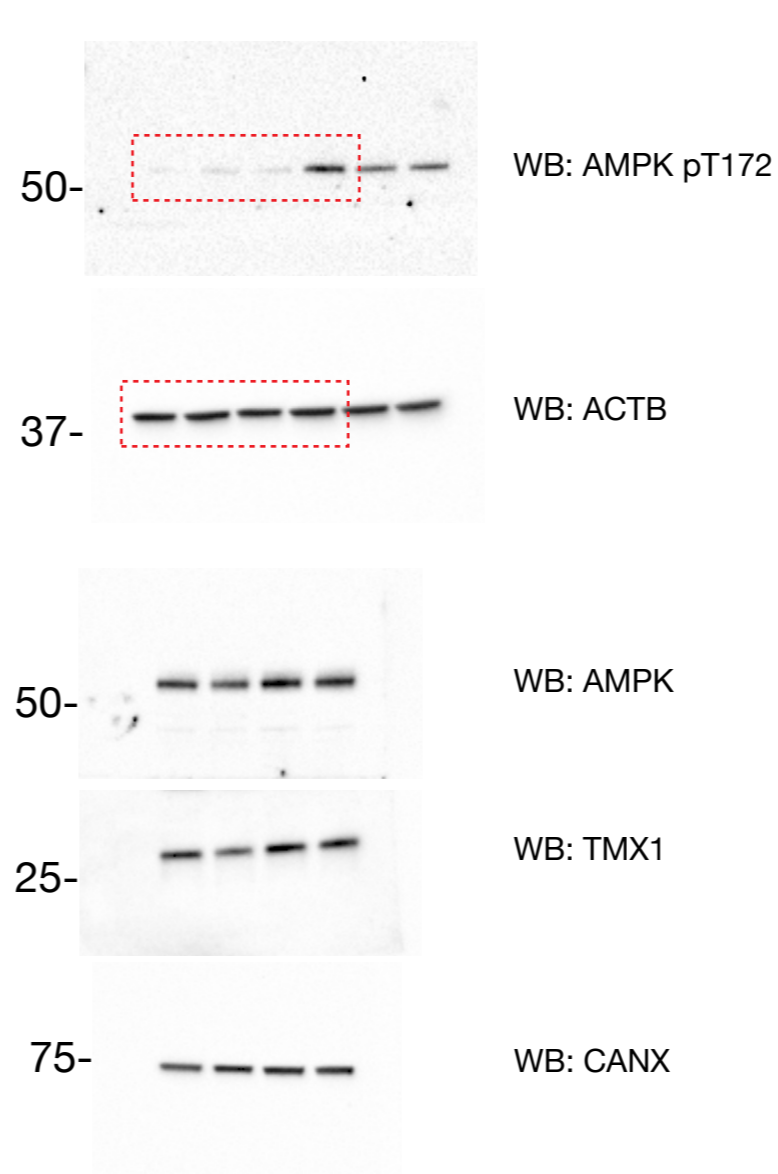
Extended Data Fig. 8a: RPE1



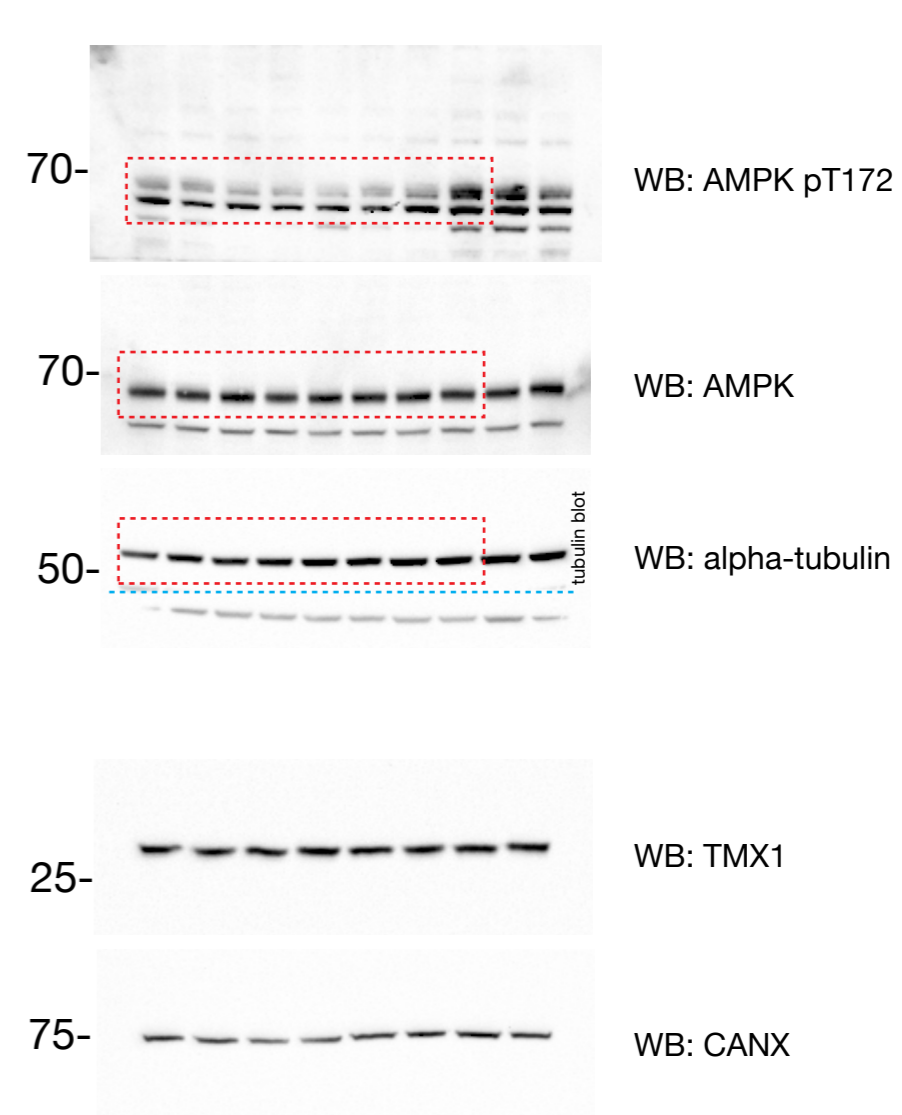
Extended Data Fig. 8a: HT29



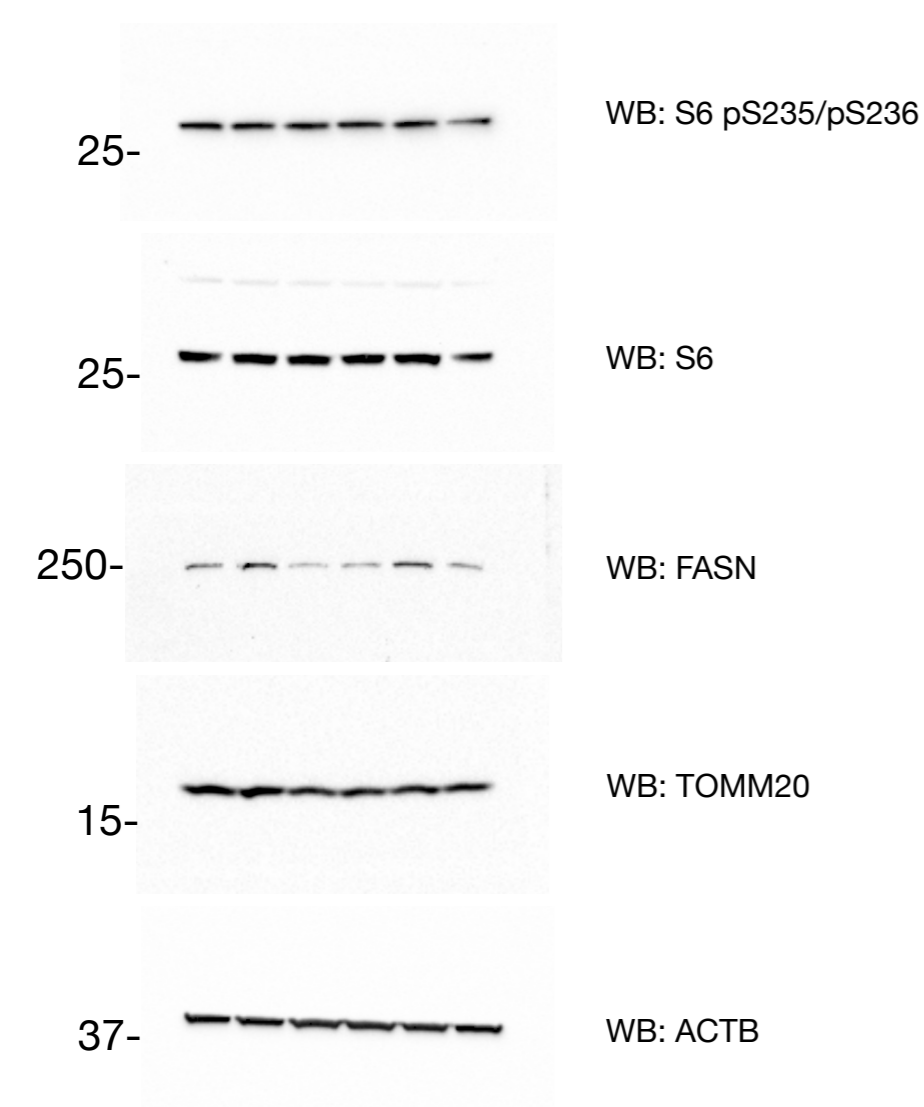
Extended Data Fig. 8a: U251



Extended Data Fig. 8b

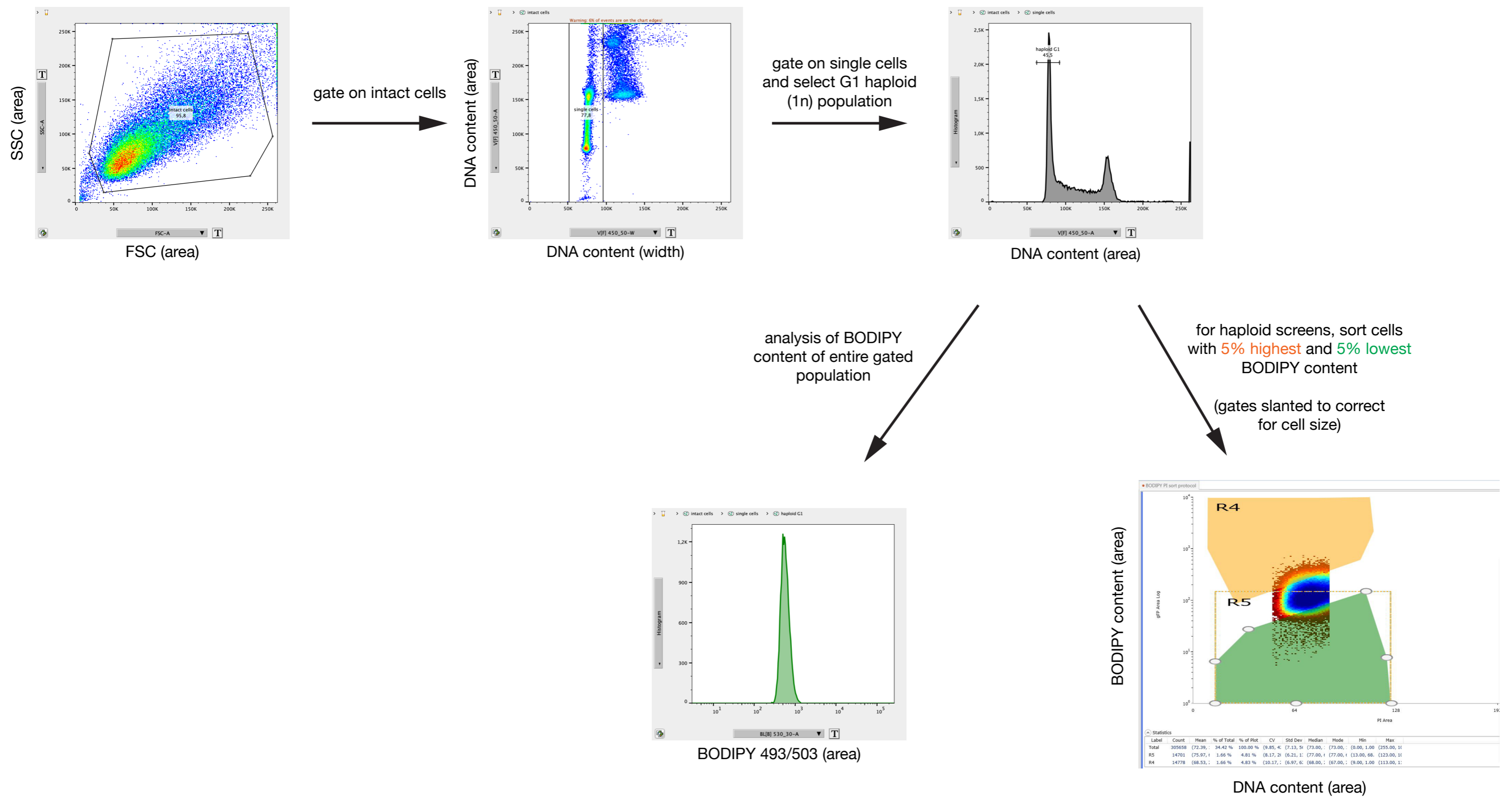


Extended Data Fig. 8d



Supplementary Information Figure 2 - gating strategy for FACS and analysis

gating strategy: fixed HAP1 cells



gating strategy: live RPE1 cells

