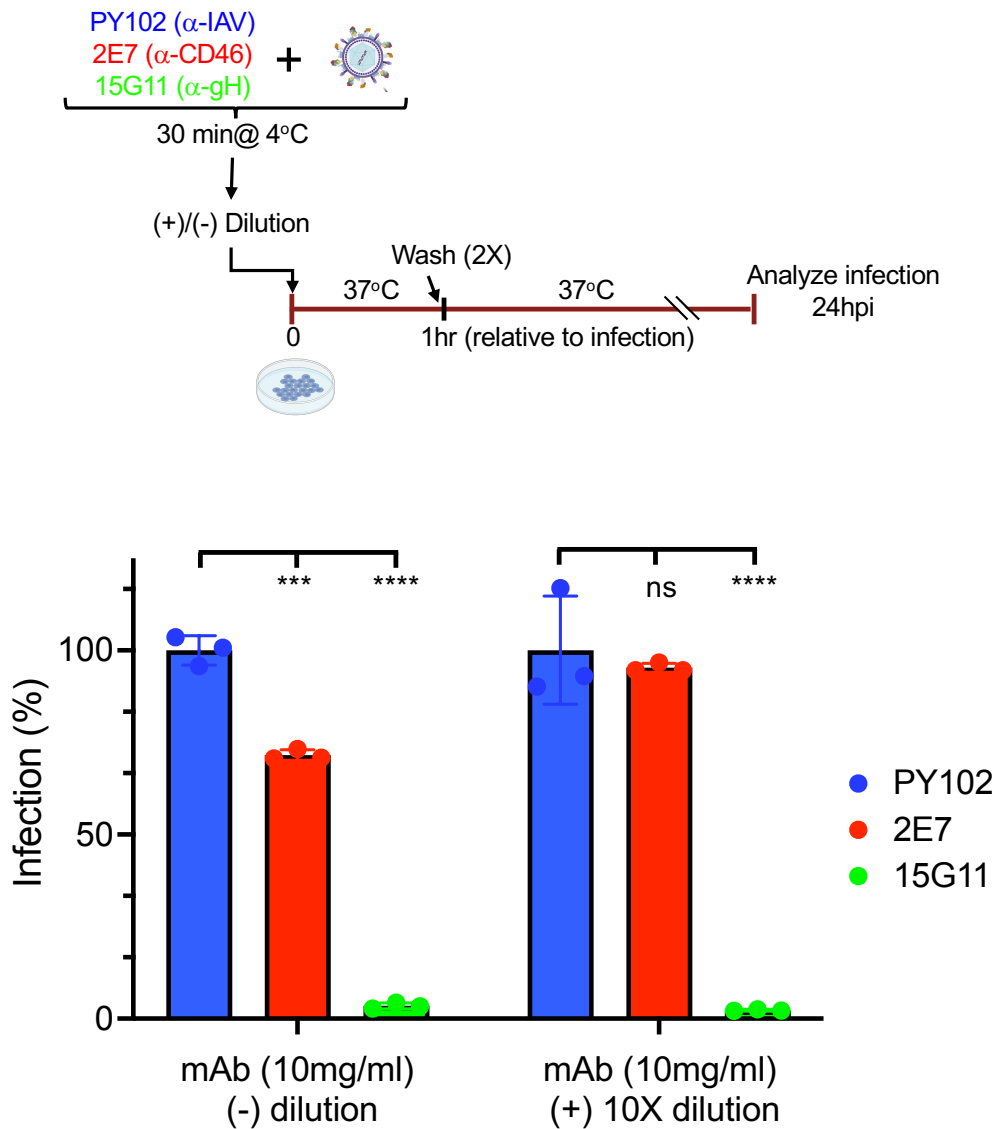
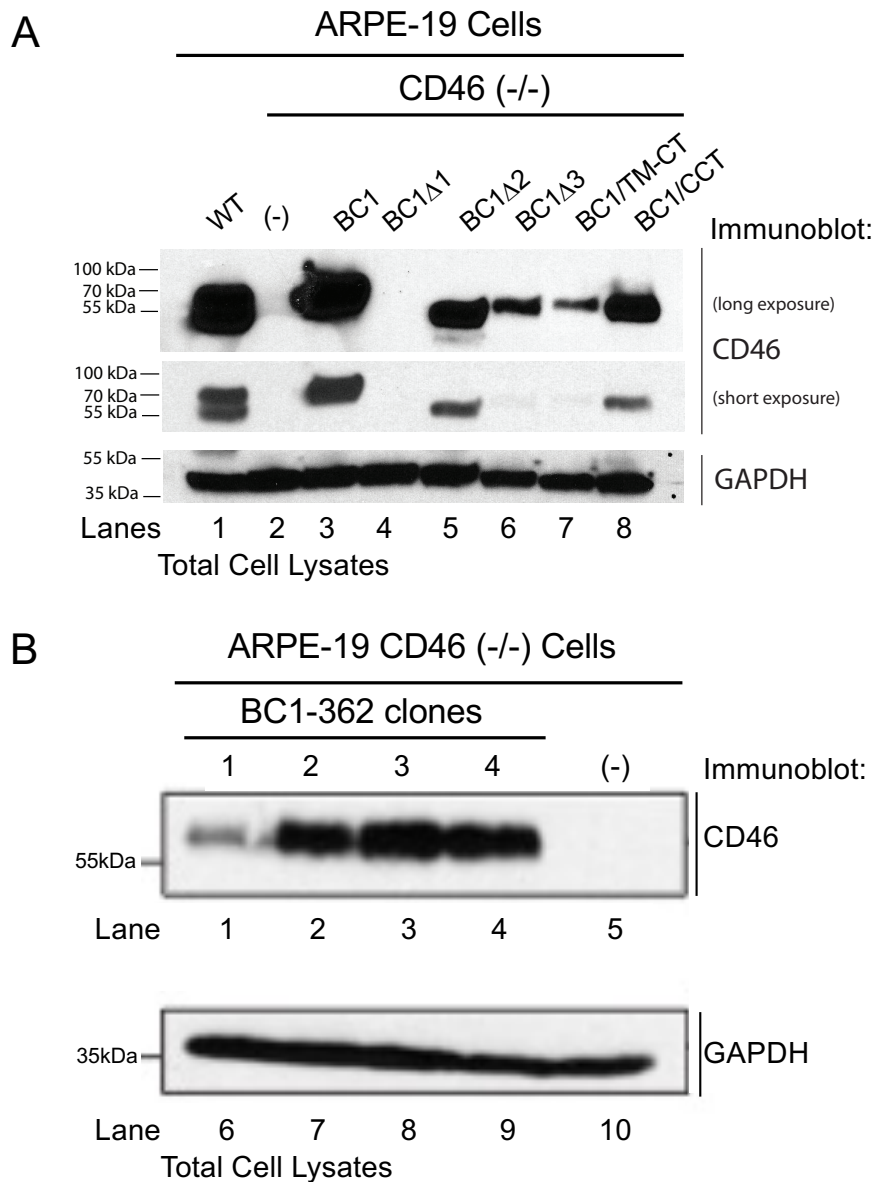


Supplemental Figure 1



Supplemental Figure 1. Evaluate mab preincubation conditions. HCMV AD169R (MOI:0.2) pre-incubated with PY102, 2E7, or 15G11 (10mg/ml) for 30 min at 4°C was directed incubated with ARPE-19 cells or diluted 10X with media followed addition to ARPE-19 cells and analyzed using an infectivity assay. Percent infection was determined using the corresponding PY102 samples as 100% infection. s.d. is depicted in the experiment. *** $p < 0.001$, **** $p < 0.0001$ (2-way ANOVA, Dunnett's multiple comparison test).

Supplemental Figure 2



Supplemental Figure 2. Analysis of CD46 mutant expression in ARPE-19 CD46 (-/-) cells. The cell lysates from **(A)** ARPE-19 and ARPE-19 CD46^{-/-} KO cells expressing vector only (-) or CD46-BC1,, CD46-BC1 Δ 1, CD46-BC1 Δ 2, CD46-BC1 Δ 3, CD46-BC/TM-CT, CD46-BC1/CCT, and **(B)** BC1-362 clones (1-4) were subjected to anti-CD46 and anti-GAPDH immunoblots, respectively.