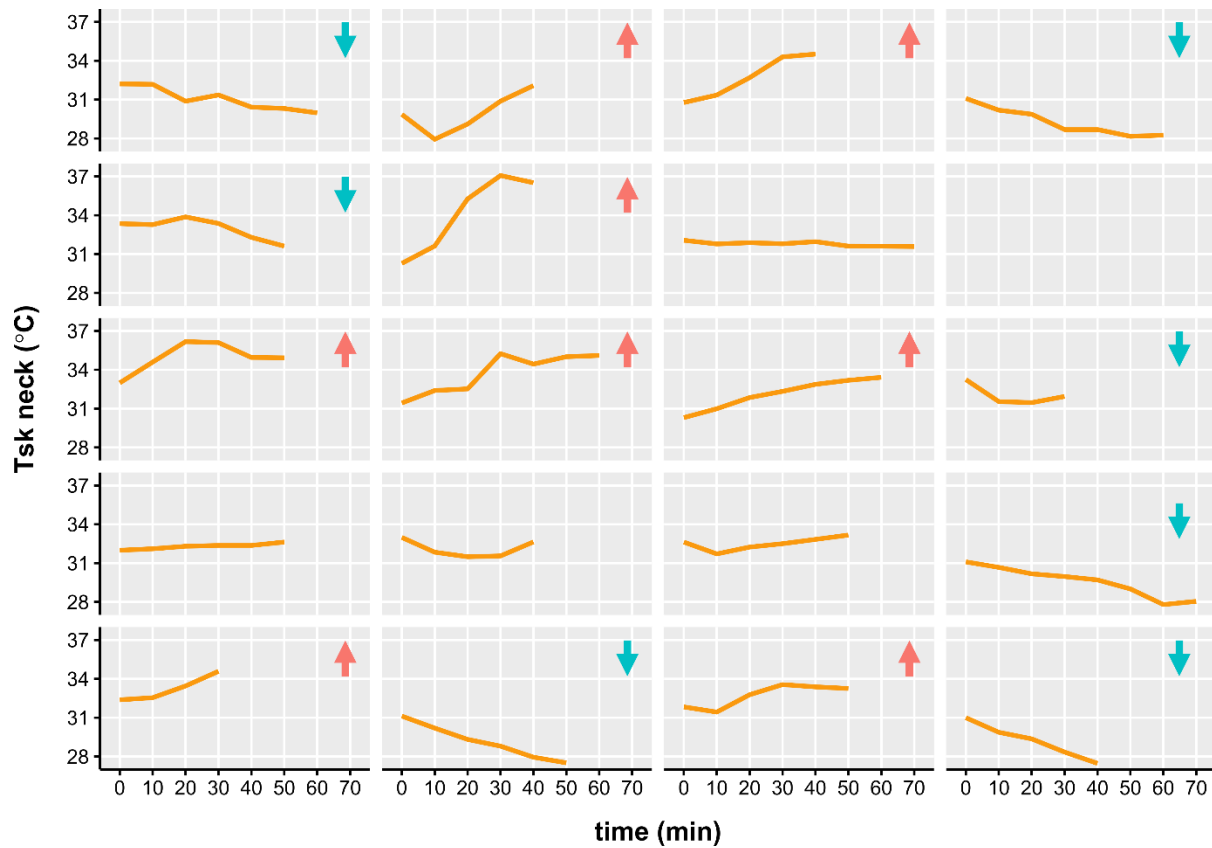
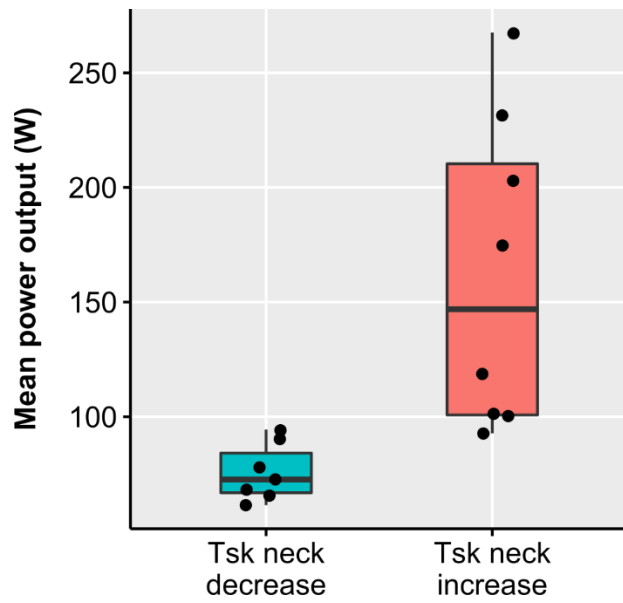


## Supplemental Digital Content 1



**Supplemental Figure 1.** Neck skin temperature data of individual para-athletes during exercise in temperate conditions. Blue and red arrows indicate whether the participants showed a clear decrease or increase in skin temperature during exercise, respectively (see Supplemental Figure 2 for mean power output of both groups).



**Supplemental Figure 2.** Mean power output of para-athletes with a skin temperature decrease (indicated by blue arrows in Supplemental Figure 1) or increase (indicated by red arrows in Supplemental Figure 1) during exercise in temperate conditions.