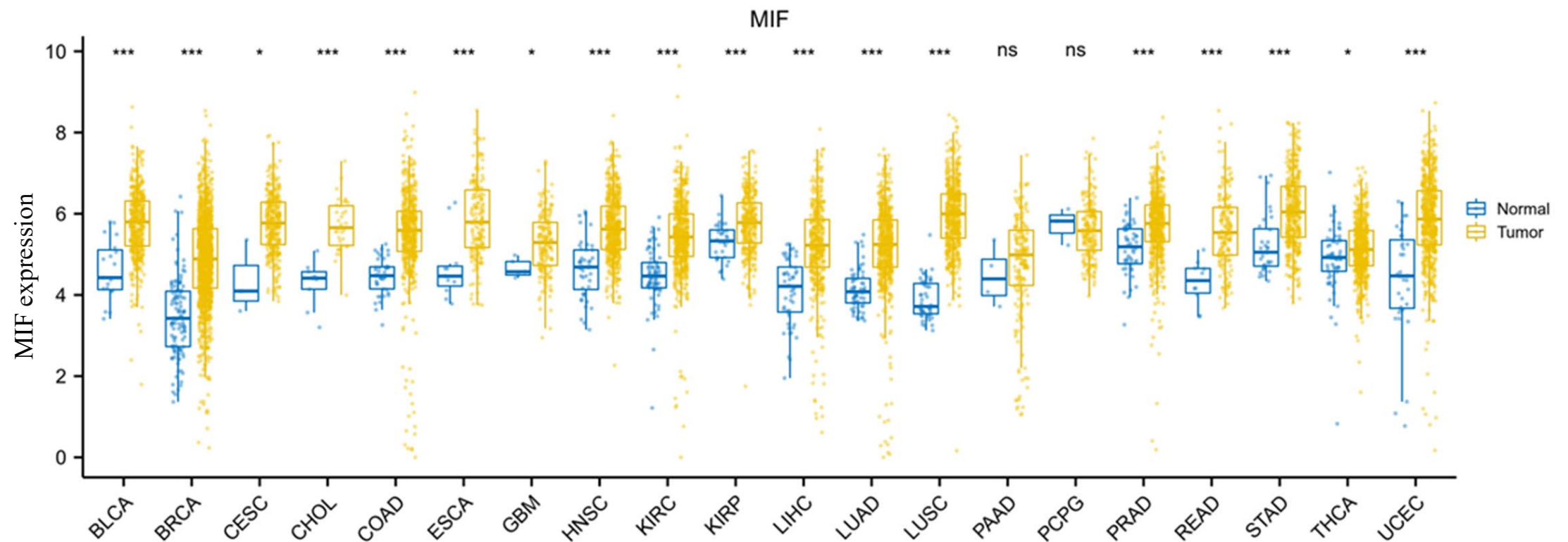


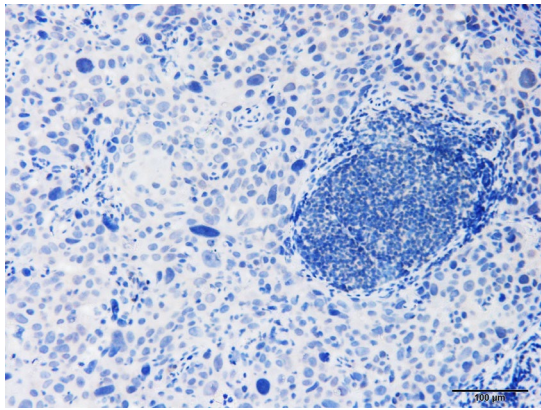
Supplementary Figure 2



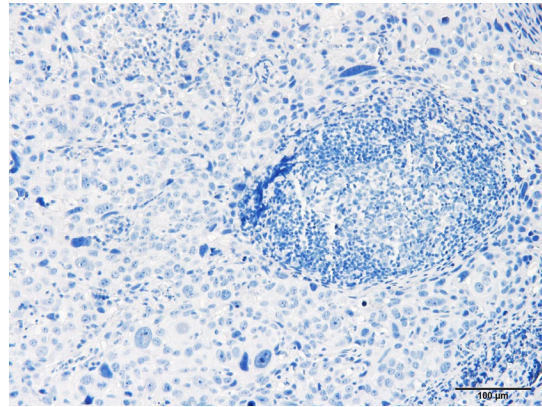
Supplementary Figure 2. The comparisons between the expression level of MIF in different tumors and normal tissues. Data were provided by TCGA database. * $p < 0.05$, ** $p < 0.01$, *** $p < 0.001$. BLCA, bladder urothelial carcinoma; BRCA, breast cancer; CESC, cervical squamous cell carcinoma and endocervical adenocarcinoma; CHOL, cholangiocarcinoma; COAD, colon adenocarcinoma; ESCA, esophageal carcinoma; GBM, glioblastoma multiforme; HNSC, head and neck squamous cell carcinoma; KIRC, kidney renal clear cell carcinoma; KIRP, kidney renal papillary cell carcinoma; LIHC, liver hepatocellular carcinoma; LUAD, lung adenocarcinoma; LUSC, lung squamous cell carcinoma; PAAD, pancreatic adenocarcinoma; PCPG, pheochromocytoma and paraganglioma; PRAD, prostate adenocarcinoma; READ, rectum adenocarcinoma; STAD, stomach adenocarcinoma; THCA, thyroid carcinoma; UCEC, uterine corpus endometrial carcinoma; ns, non-significant.

Supplementary Figure 3

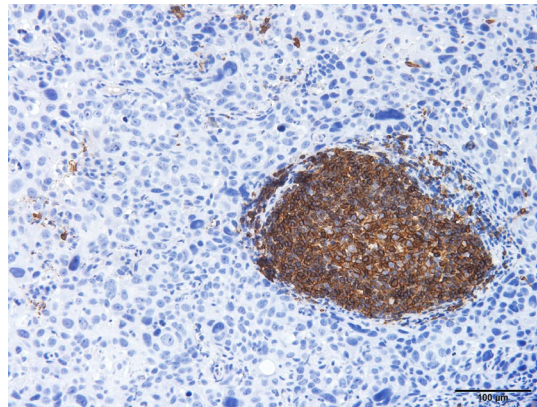
MIF



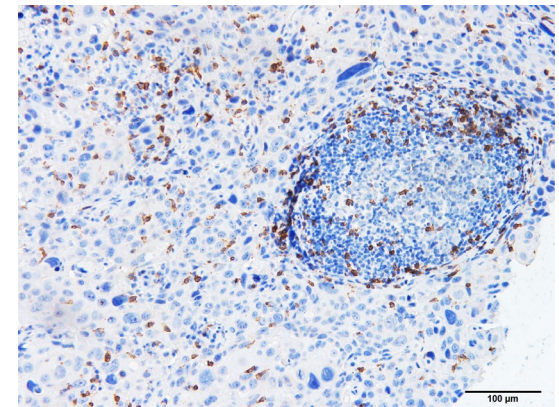
PD-L1



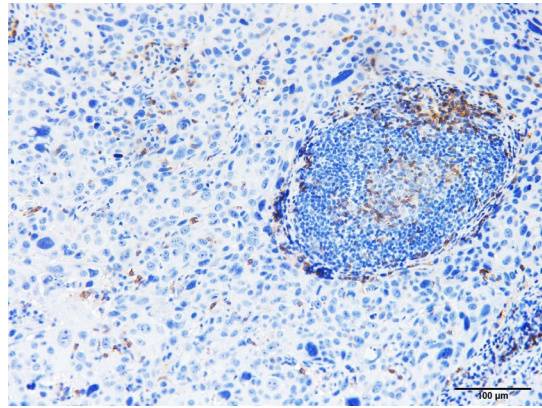
CD20



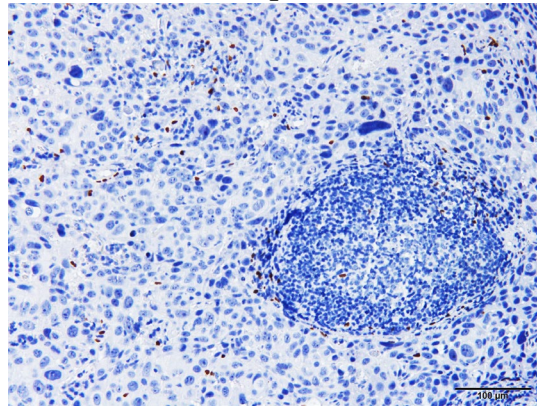
CD8



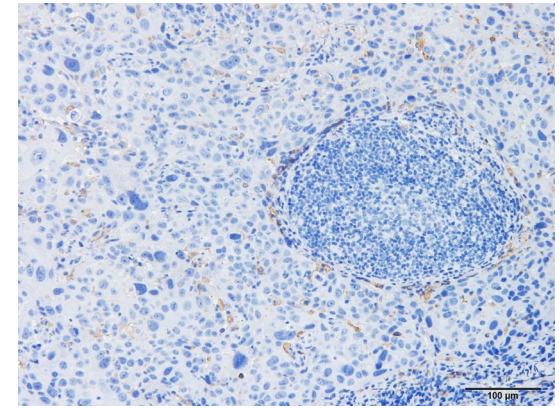
CD4



Foxp3



CD163



Supplementary Figure 3. IHC images of the TLS observed in the other patient. Original magnification×200.