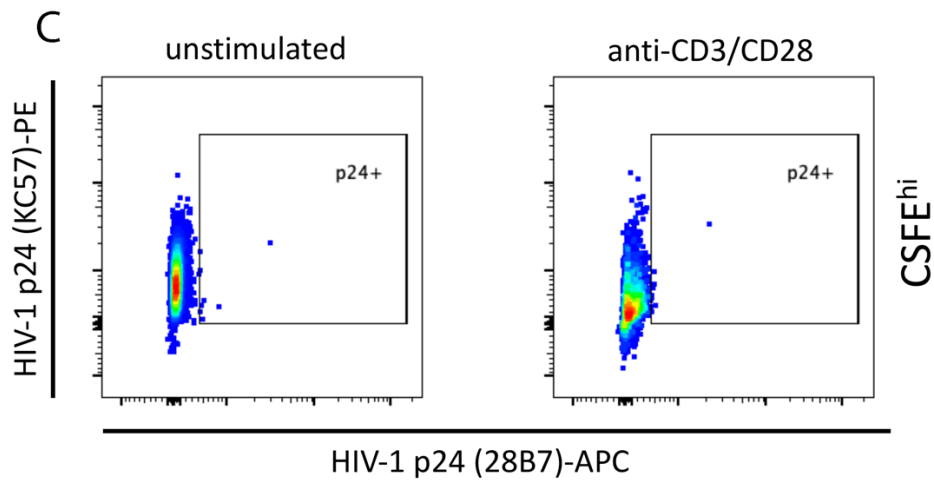


B

Cells	CFSE ^{lo}	
	Unstimulated	anti- CD3/CD28
CD3+	64114	21865
p24+	16	37
p24+ / 10 ⁶ CD3+	250	1692



D

Cells	CFSE ^{hi}	
	Unstimulated	anti- CD3/CD28
CD3+	38050	6836
p24+	10	16
p24+ / 10 ⁶ CD3+	263	2341

Supplementary Figure 5. HIV-Flow performed with CFSE labelled JCV-specific non-naïve CD4⁺ T-cells derived from PBMCs collected after 46 weeks of ART. FACS plots (A and C) and p24-gag double positive cells per 10⁶ CD4⁺T-cells for CFSE^{low} and CFSE^{high} cells (B and D) are shown. p24-gag double positive cells were detected with the antibodies KC57 and 28B7.