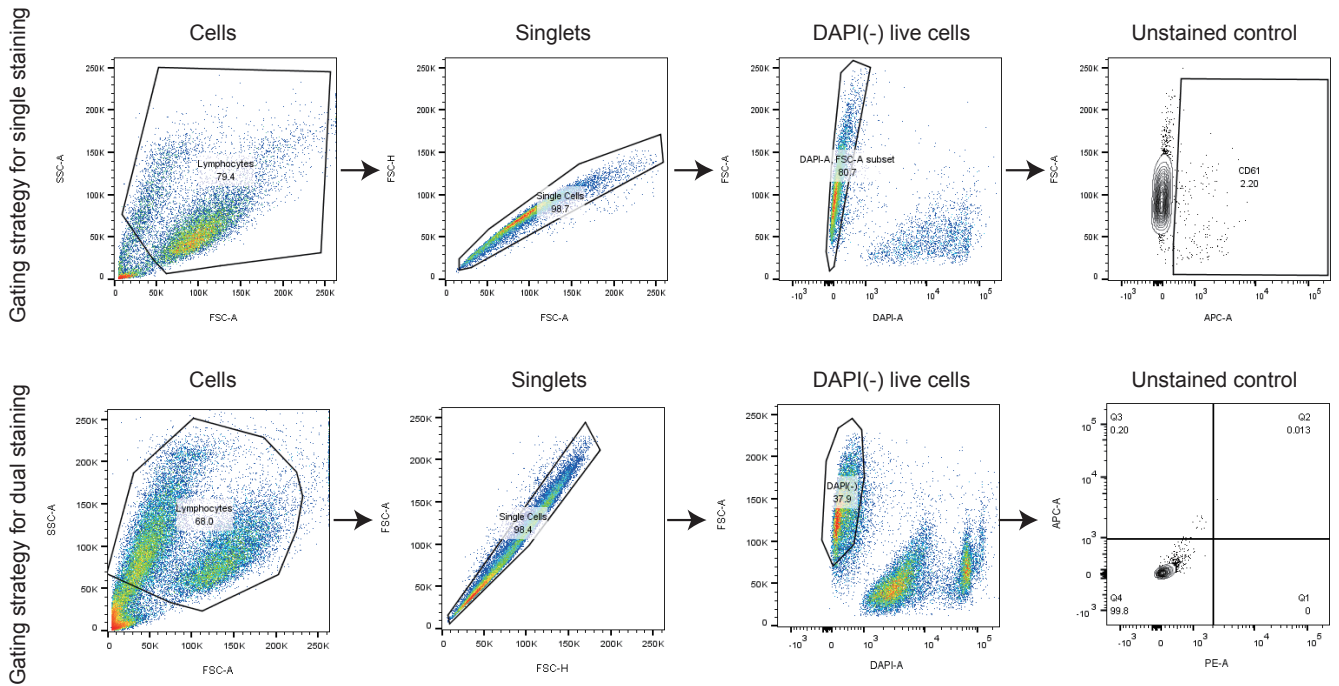




# **RBFox2 recognizes *N*<sup>6</sup>-methyladenosine to suppress transcription and block myeloid leukaemia differentiation**

In the format provided by the authors and unedited



**Supplementary Fig. 1:** Unstained cells were used to set the gates for single staining and dual staining analysis. In brief, all the events except debris were gated for singlets analysis, then DAPI negative live cells were gated for fluorescence analysis in which unstained control cells were used to set the gate for positive populations.