

## Supplementary information

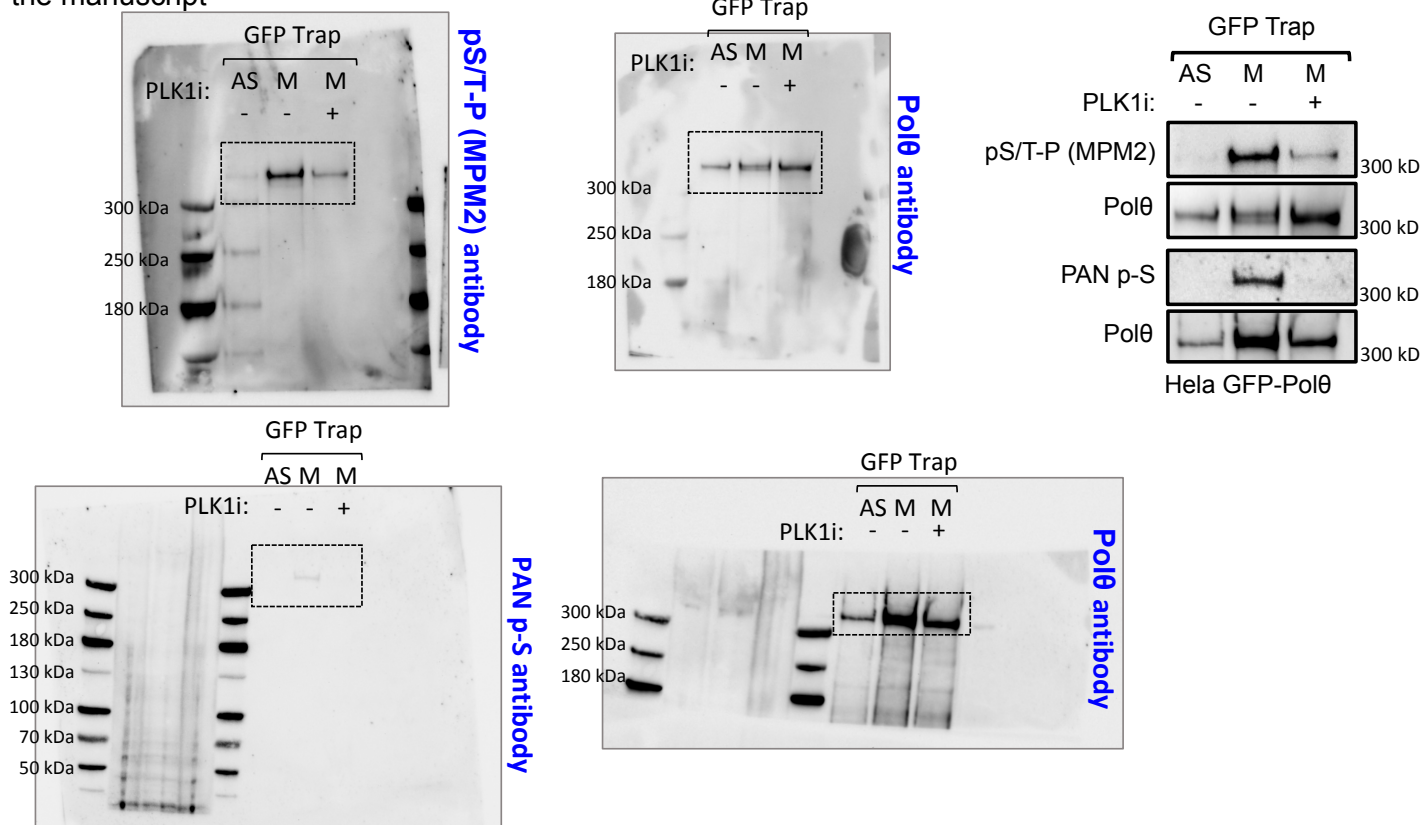
---

# Pol $\theta$ is phosphorylated by PLK1 to repair double-strand breaks in mitosis

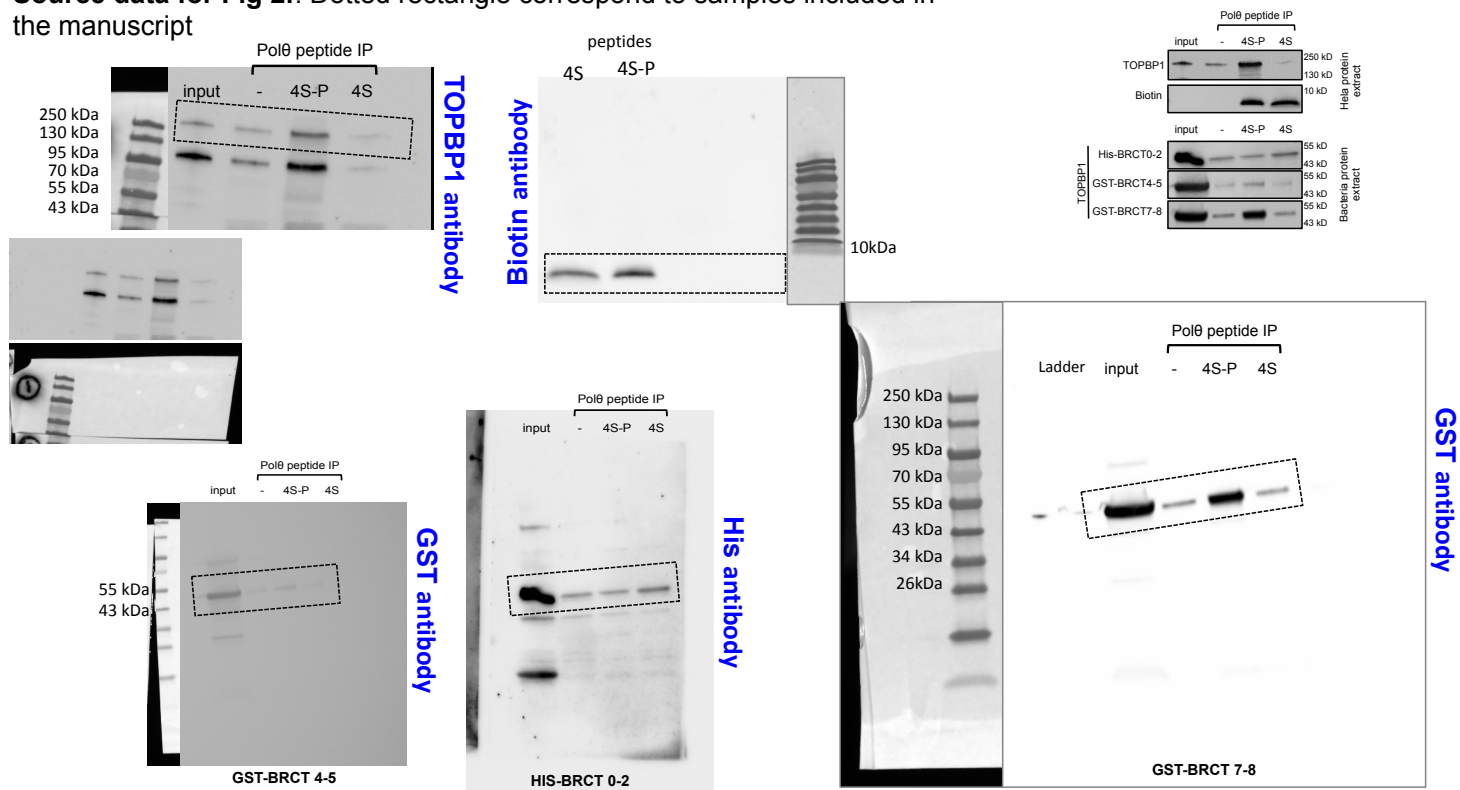
---

In the format provided by the authors and unedited

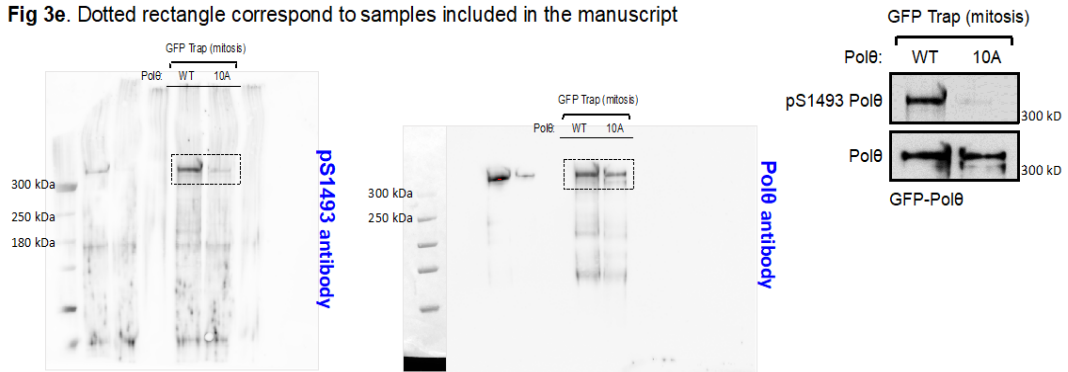
Source data for Fig 2a. Dotted rectangle correspond to samples included in the manuscript



Source data for Fig 2f. Dotted rectangle correspond to samples included in the manuscript

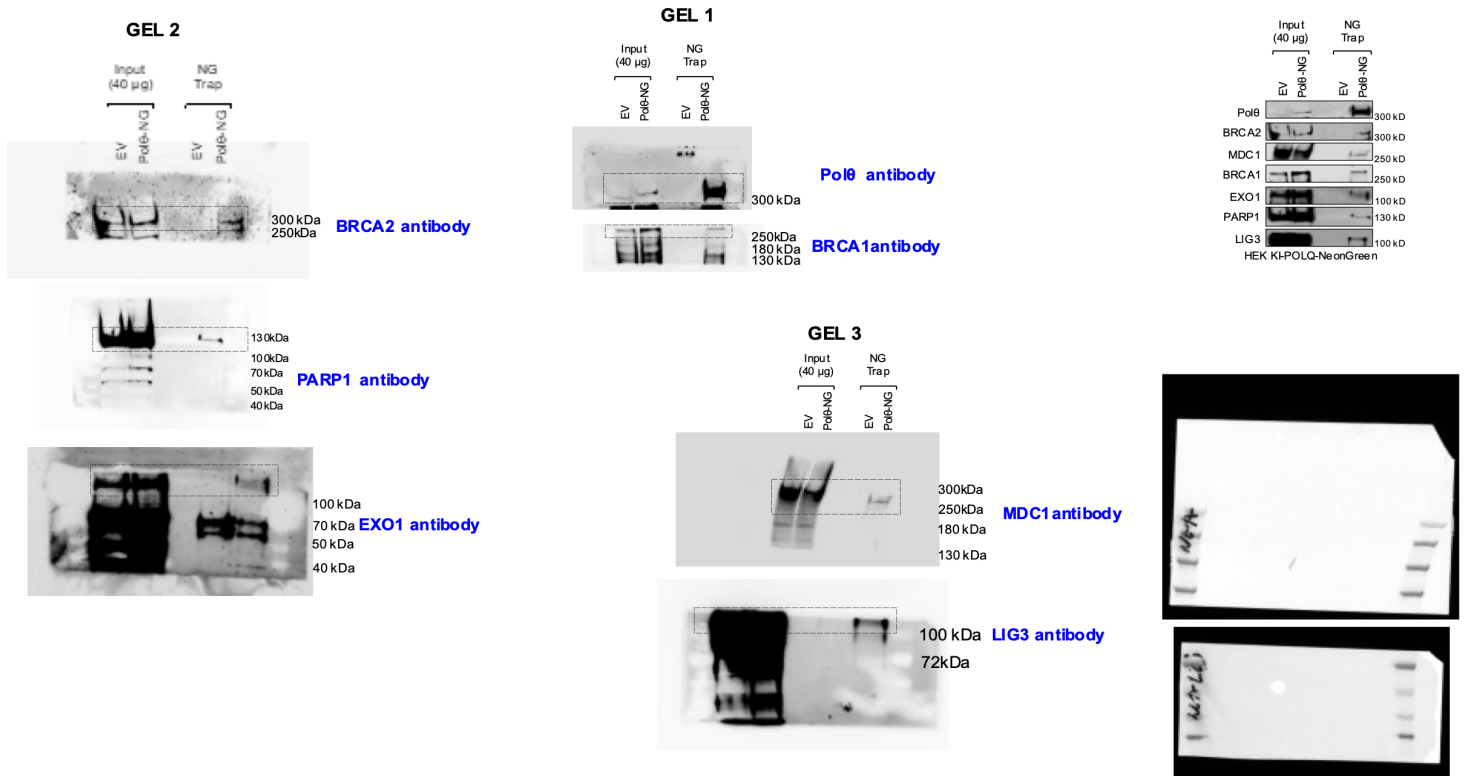


**Fig 3e.** Dotted rectangle correspond to samples included in the manuscript

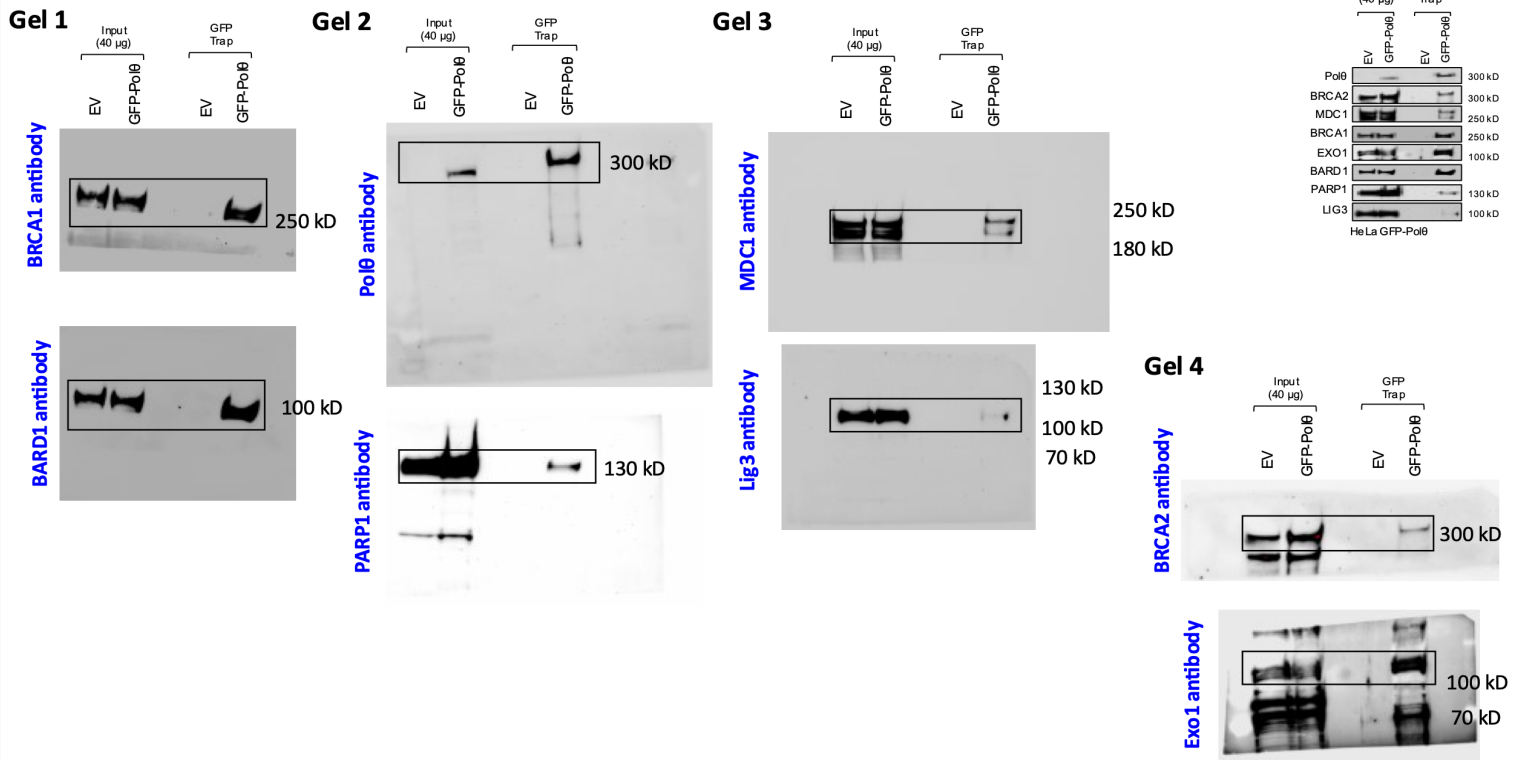




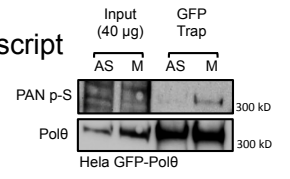
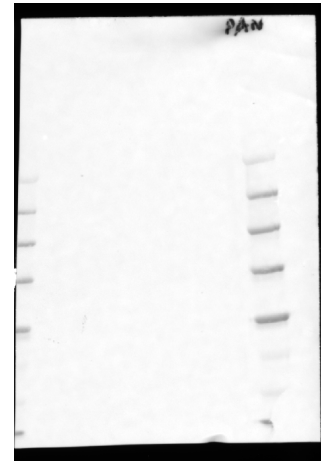
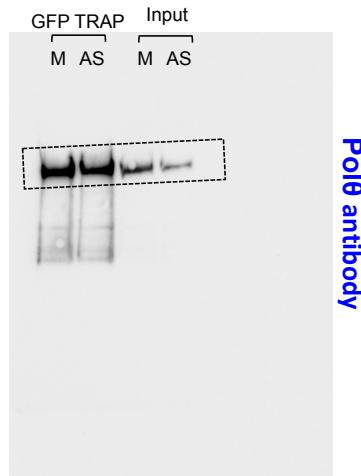
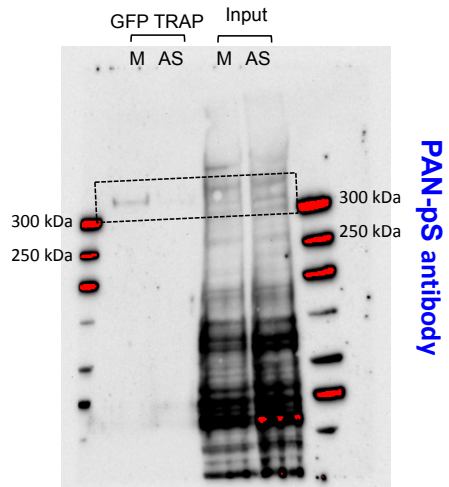
**Extended Data Figure 1h.** Dotted rectangle correspond to samples included in the manuscript



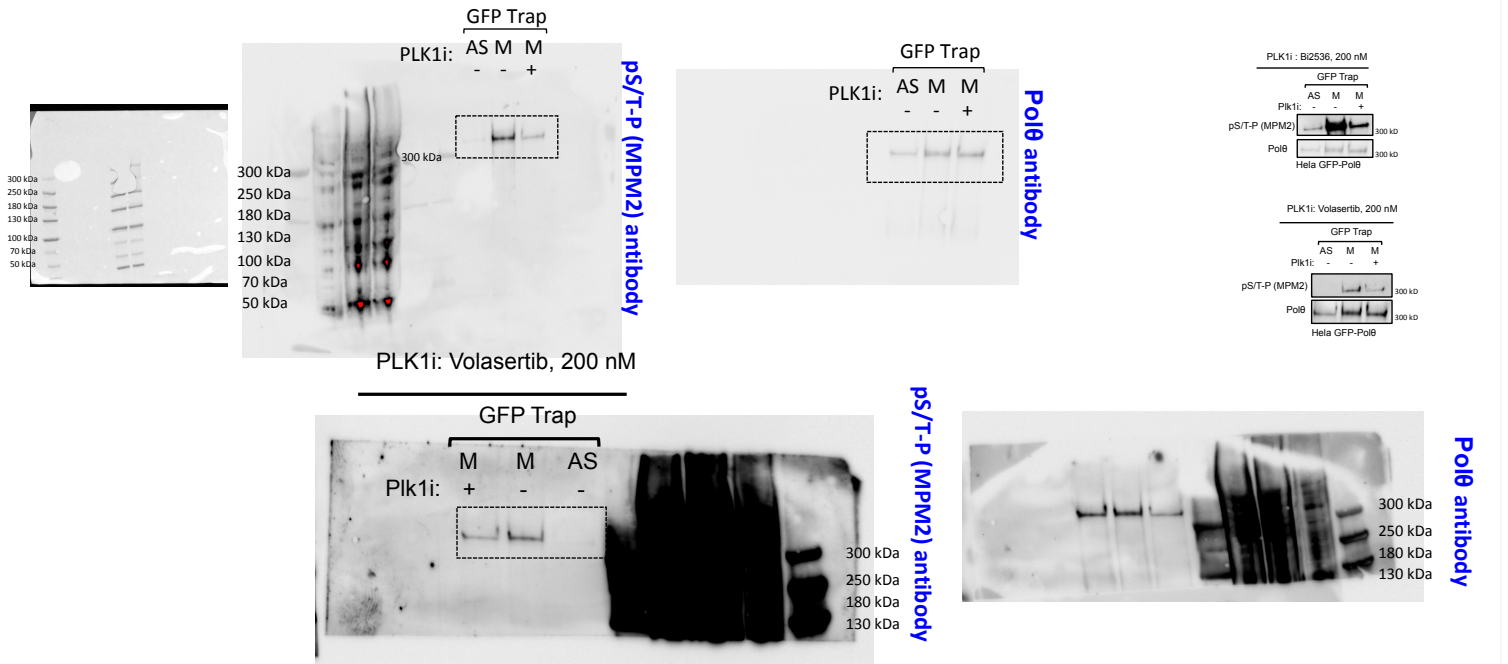
**Extended Data Figure 1i.** Dotted rectangle correspond to samples included in the manuscript



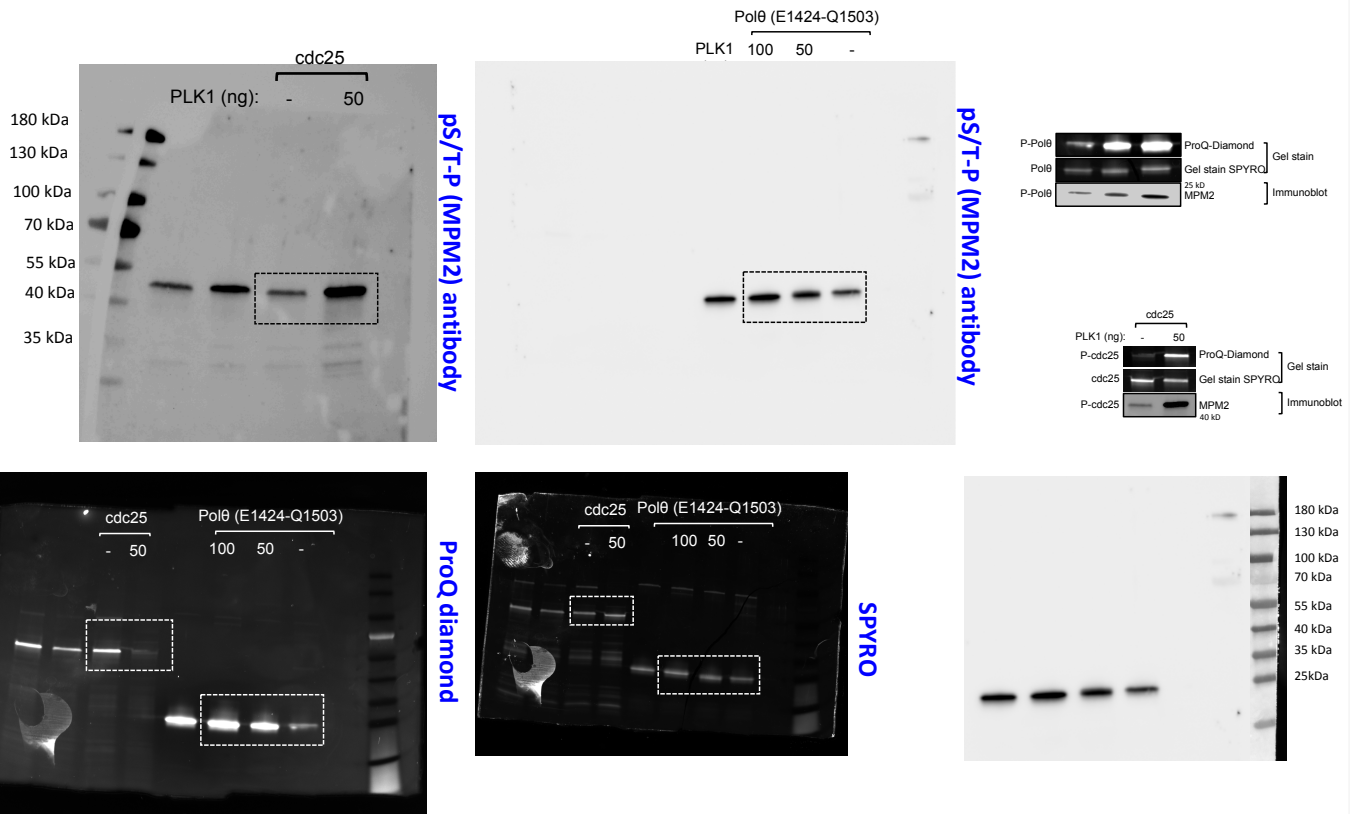
SI Extended Data Figure 4c. Dotted rectangle correspond to samples included in the manuscript



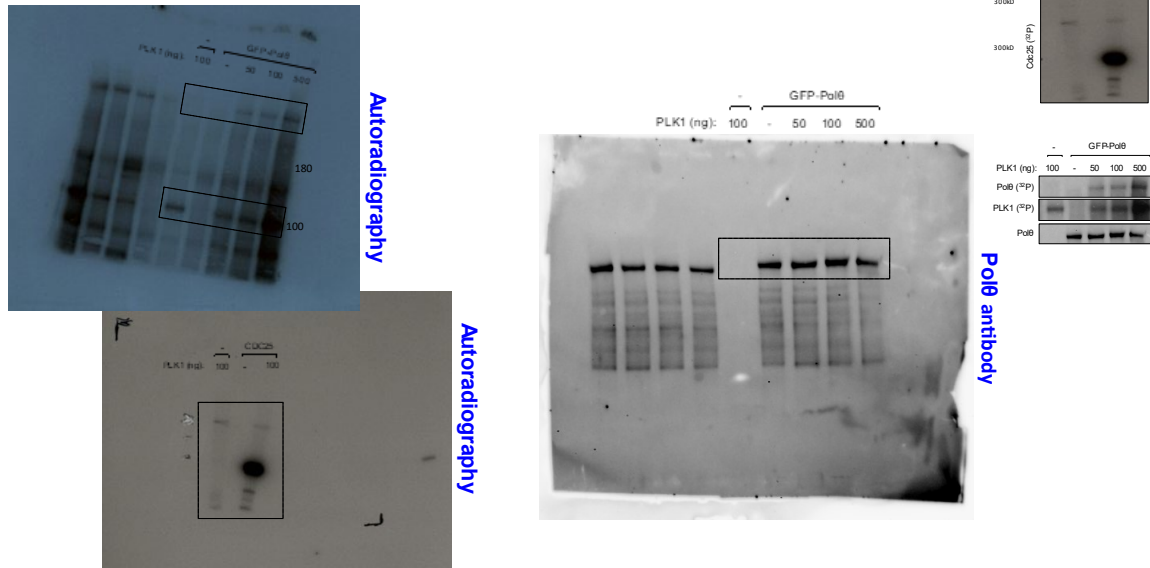
**Extended Data Figure 4d.** Dotted rectangle correspond to samples included in the manuscript



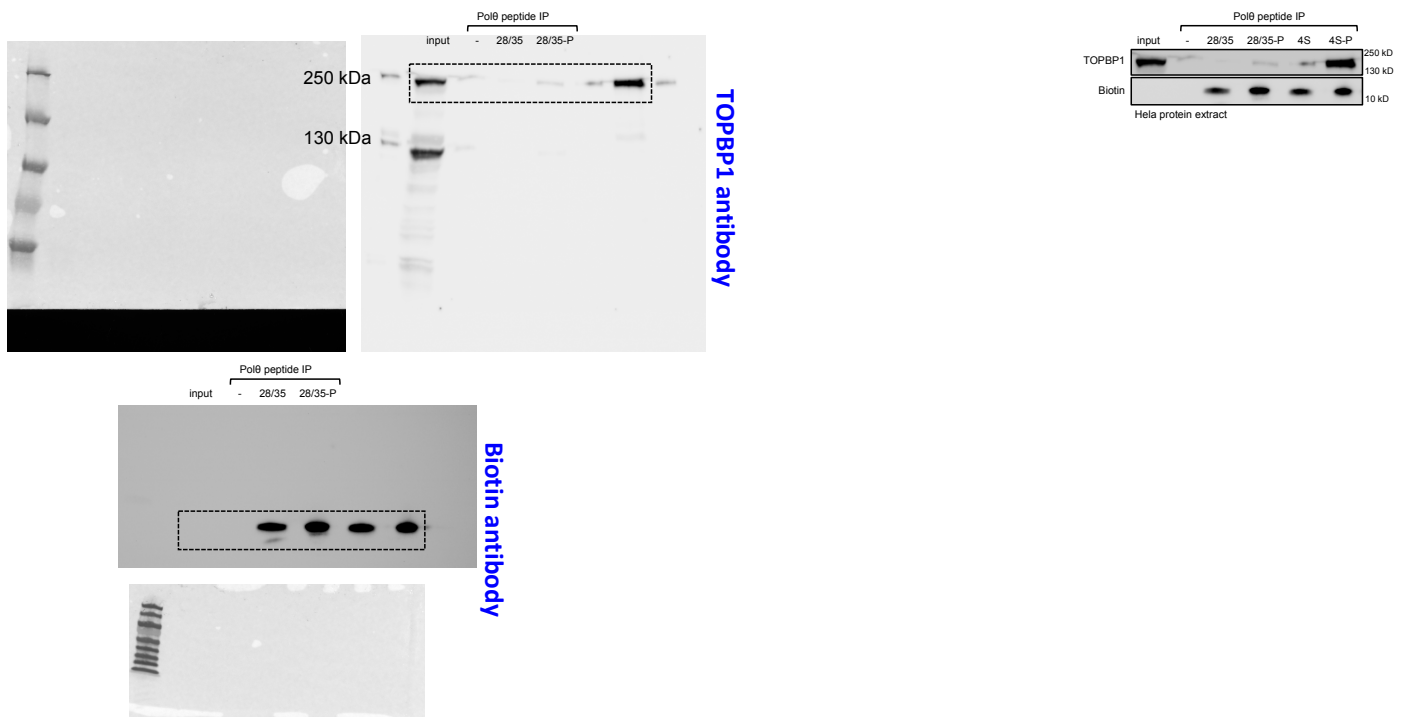
**Extended Data Figure 4e.** Dotted rectangle correspond to samples included in the manuscript



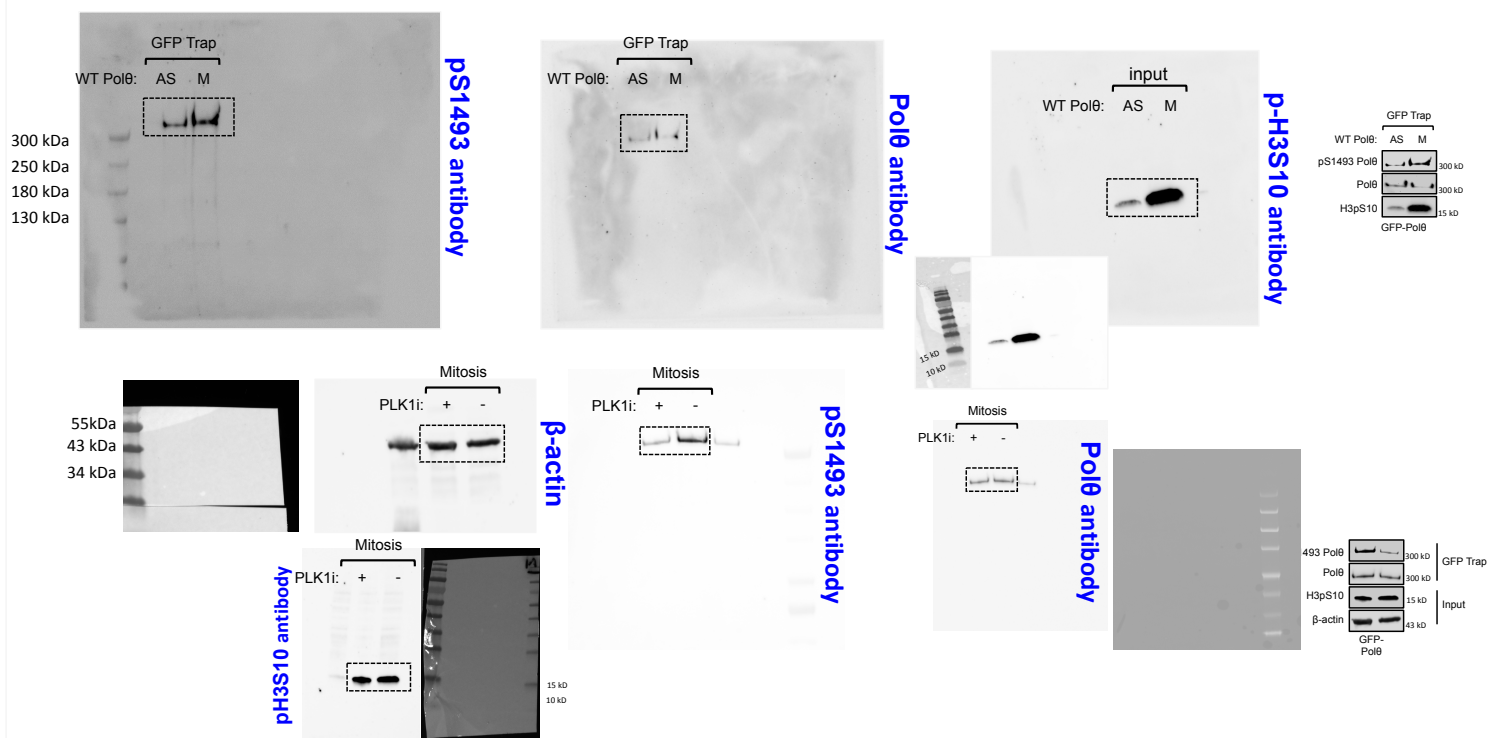
**Extended Data Figure 4f.** Dotted rectangle correspond to samples included in the manuscript



Extended Data Figure 6c. Dotted rectangle correspond to samples included in the manuscript



Extended Data Figure 7i. Dotted rectangle correspond to samples included in the manuscript





**Extended Data Figure 9i.** Dotted rectangle correspond to samples included in the manuscript

