

SUPPLEMENTARY MATERIAL

Figure S1

(A) Flow cytometric analysis of mouse peripheral blood stained with isotype controls. (B) Flow cytometric analysis showing that human cord blood-isolated CD34⁺ cells were 54% positive for human CD45⁺ (peripheral blood gated on the lymphocyte population). (C) Cytotoxicity assay demonstrating that hPSC-NKs kill 76% of K562 cells within 4 hrs of incubation, while PB-NKs kill 30%. (D) Isotype controls demonstrating the specificity of CD56, CD16, CD94, NKp46, NKG2A, and KIR staining. (E) Immunofluorescence image of the isotype control for the Granzyme B stain in Panel D (Figure 3). This image depicts the DAPI stain (blue) localized to hPSC-NK cell nuclei. (F) Isotype controls demonstrating the specificity of perforin, TNF α , and IFN γ staining.

Table S1

NK Cytotoxicity Assay data table showing hPSC-NK:target cell ratios and hPSC-NK cytotoxicity percentages on the basis of propidium iodide staining. For this assay, hPSC-NKs were co-cultured with K562 tumor cells.

Figure S1

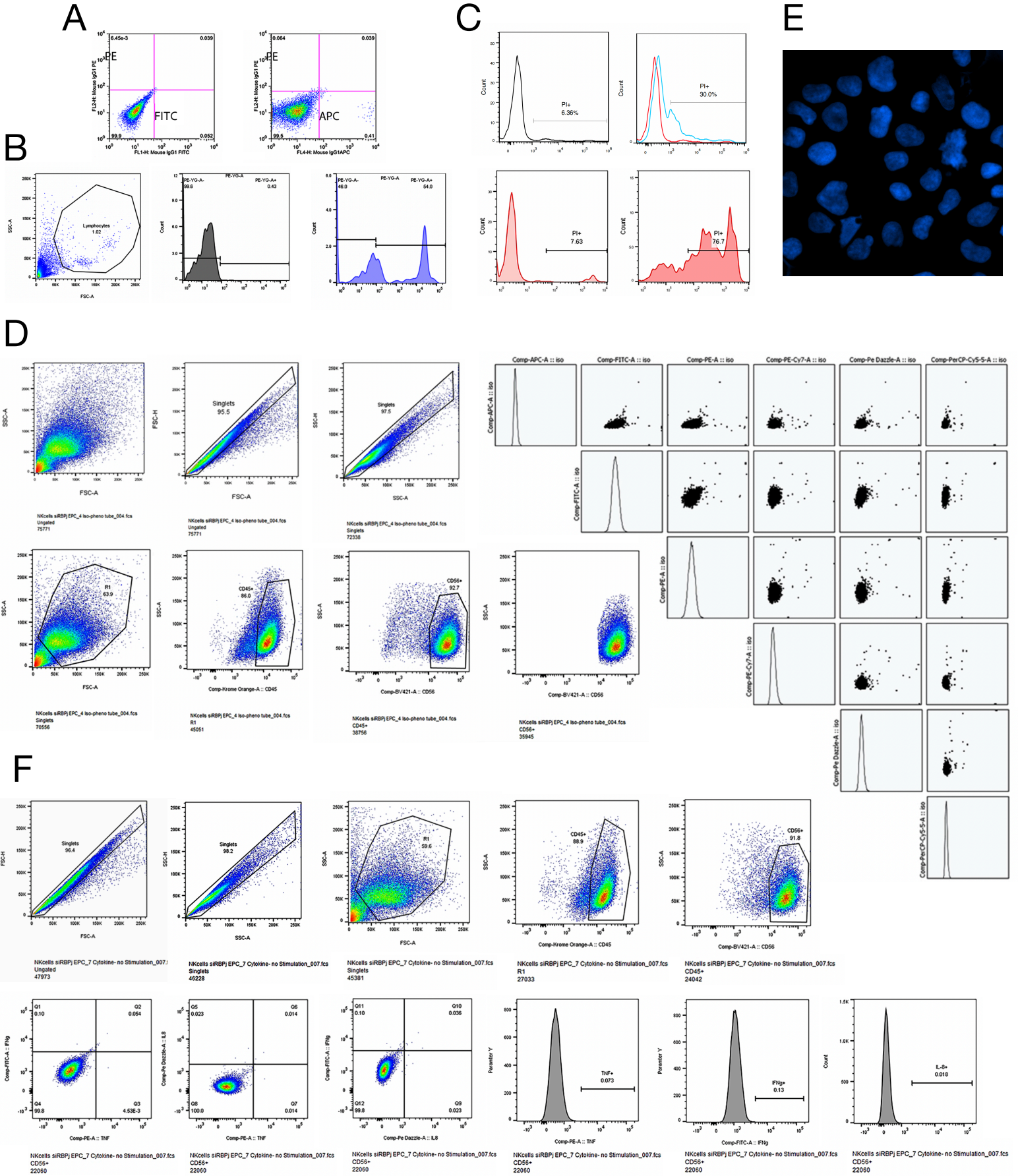


Table S1

NK CYTOTOXICITY ASSAY

Assay #	hPSC-NK Sample #	hPSC-NK:Target Cell Ratio	Tube Name	K562/PI+ %	hPSC-NK Cytotoxicity
Assay 1	Sample1	40:1	Green K562 A-1 00084840 001.LMD	68.8	61.2
	Sample1	20:1	Green K562 A-1 00084841 002.LMD	69.7	62.1
Assay 2	Sample2	40:1	Green K562 A-2 00084842 001.LMD	71.4	63.8
	Sample2	20:1	Green K562 A-2 00084843 002.LMD	72.5	64.9
Assay 3	Sample3	40:1	Green K562 A-3 00084844 001.LMD	76.7	69.1
	Sample3	20:1	Green K562 A-3 00084845 002.LMD	75.8	68.2
Assay 4	Sample1	10:1	Green K562 B-1 00084846 001.LMD	61.1	53.5
	Sample1	5:1	Green K562 B-1 00084847 002.LMD	56.3	48.7
Assay 5	Sample2	10:1	Green K562 B-2 00084848 001.LMD	66.5	58.9
	Sample2	5:1	Green K562 B-2 00084849 002.LMD	63.4	55.8
Assay 6	Sample3	10:1	Green K562 B-3 00084850 001.LMD	64.5	56.9
	Sample3	5:1	Green K562 B-3 00084851 002.LMD	62.2	54.6
	K562 ONLY		K562 contr N1G CTA 00084787 001.LMD	7.63	