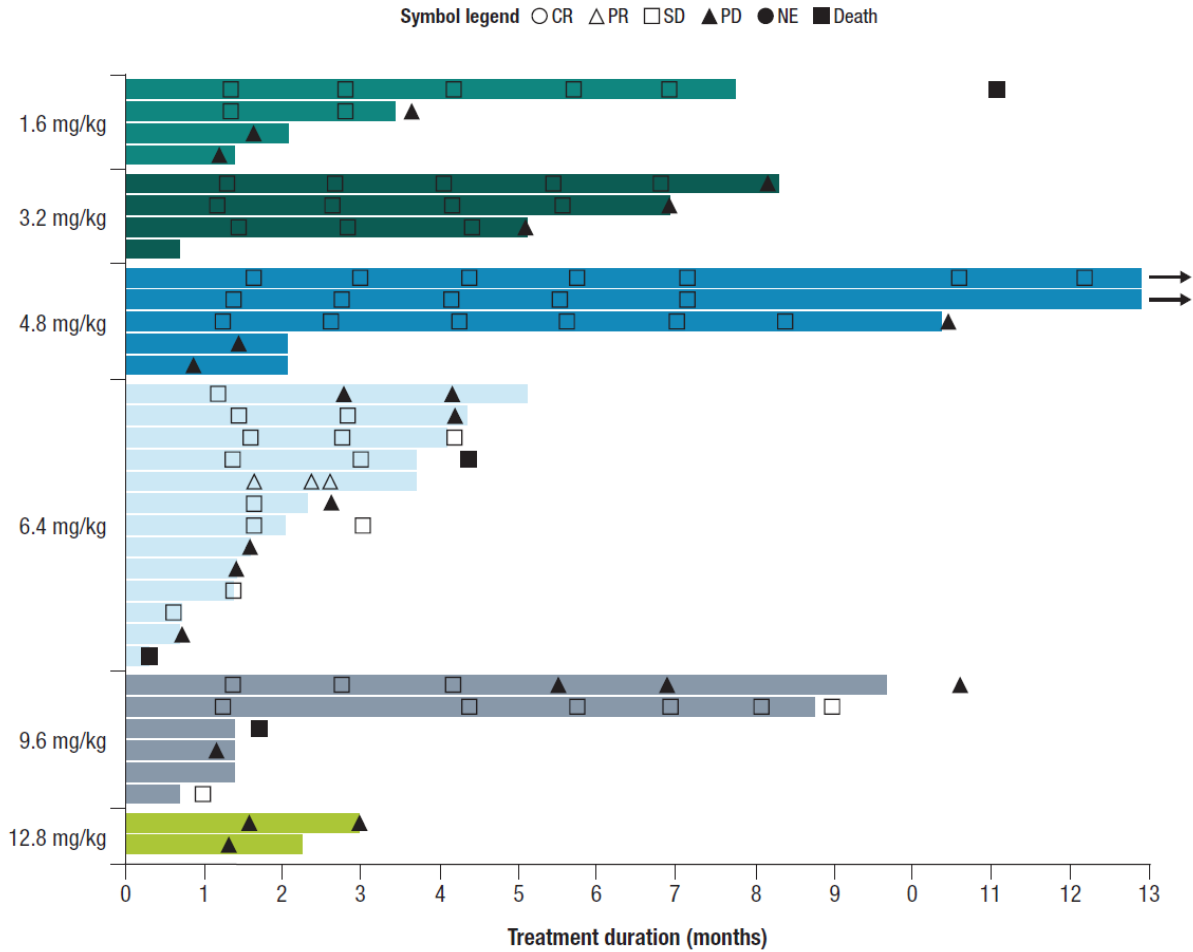


**Supplementary Figure S1. Swimmer plot of tumor response over time**



Best overall responses with confirmation of CR/PR are shown. Arrow: treatment continues; white circle: CR; white triangle, PR; white square, SD; black triangle, PD; black circle, NE; black square, death. Treatment duration (months) = (last dose date of study drug minus first dose date of study drug +21)/30.4375 (treatment duration adjusted for patients who died prior to study Day 21).

CR, complete response; NE, not evaluable; SD, stable disease