

Fig. S1: Manhattan and QQ plots for GI in each separate environment

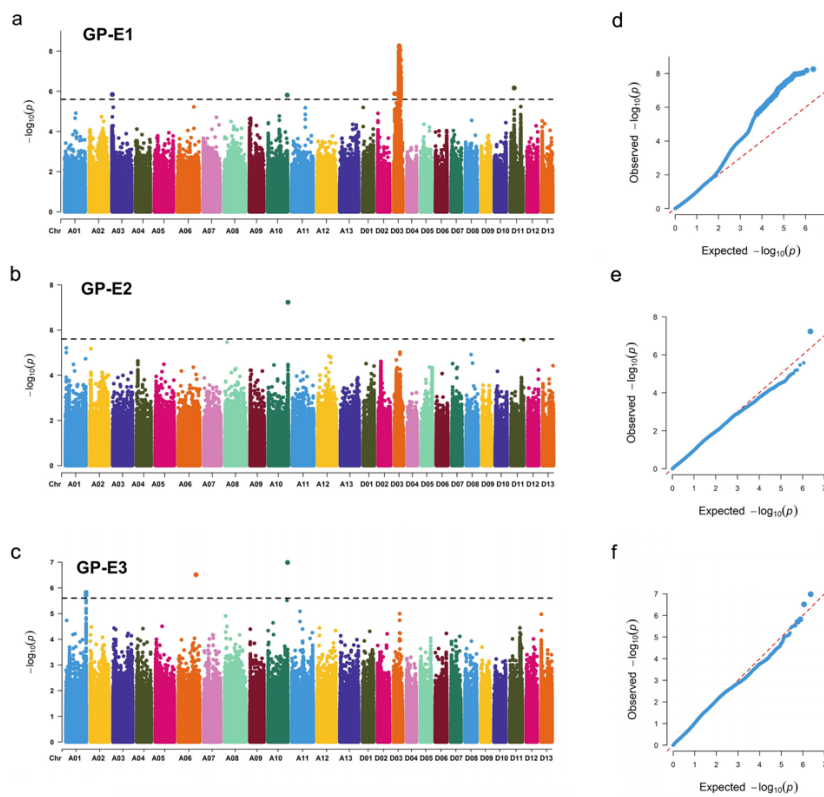


Fig. S2: Manhattan and QQ plots for GP in each separate environment

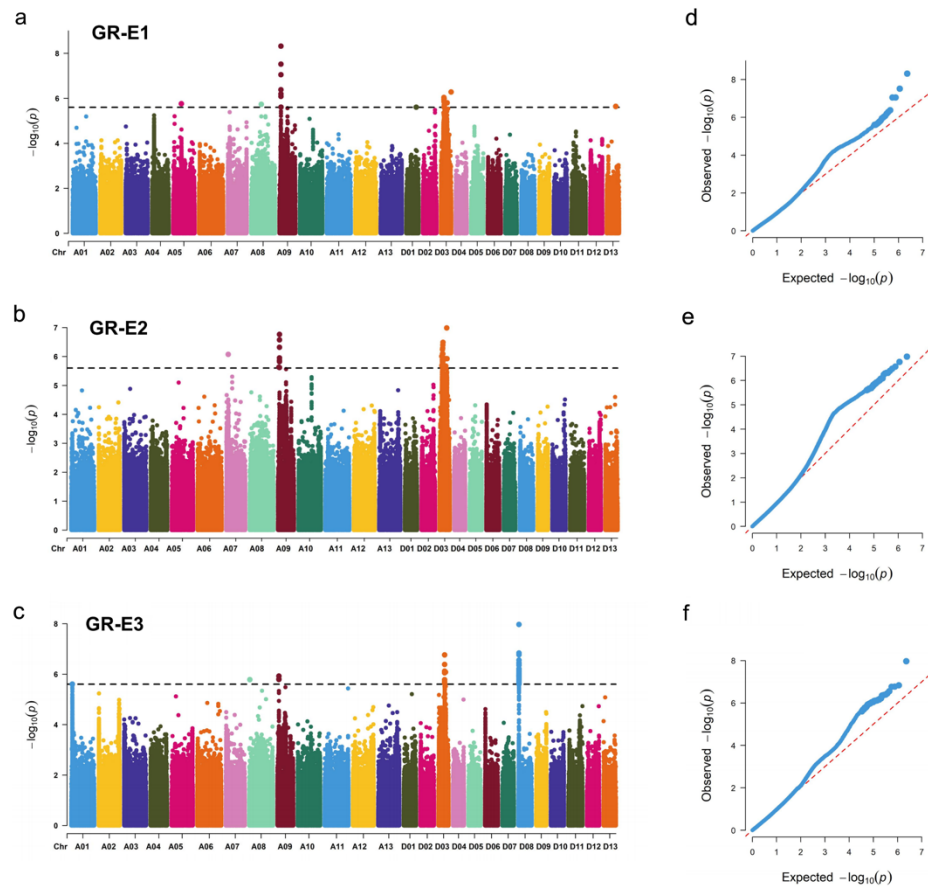


Fig. S3: Manhattan and QQ plots for GR in each separate environment

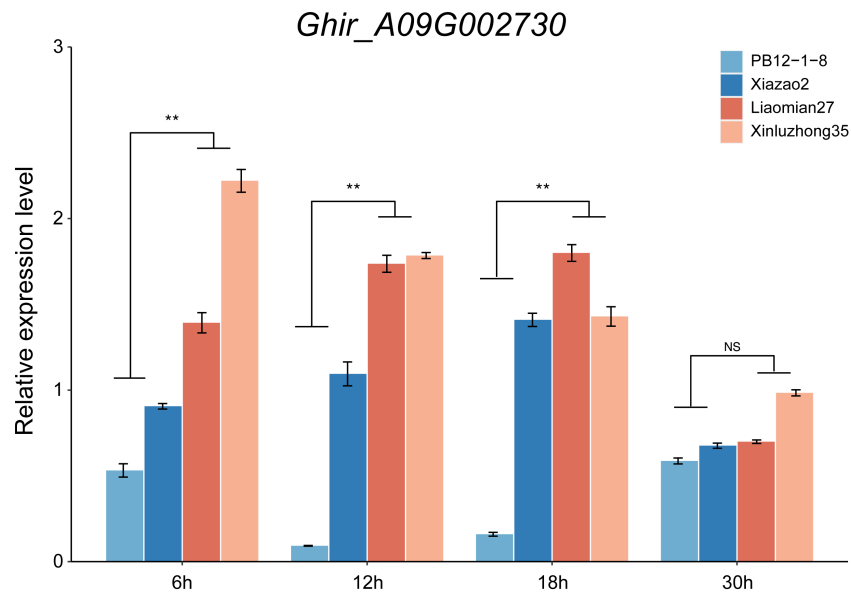


Fig. S4: Expression level analysis of *Ghir_A09G002730* between ‘Liaomian27’, ‘Xinluzhong35’, ‘PB12-1-8’, and ‘Xiazao2’ during seed germination stage (6, 12, 18 and 30 h) by qRT-PCR (** P < 0.01, * P < 0.05).

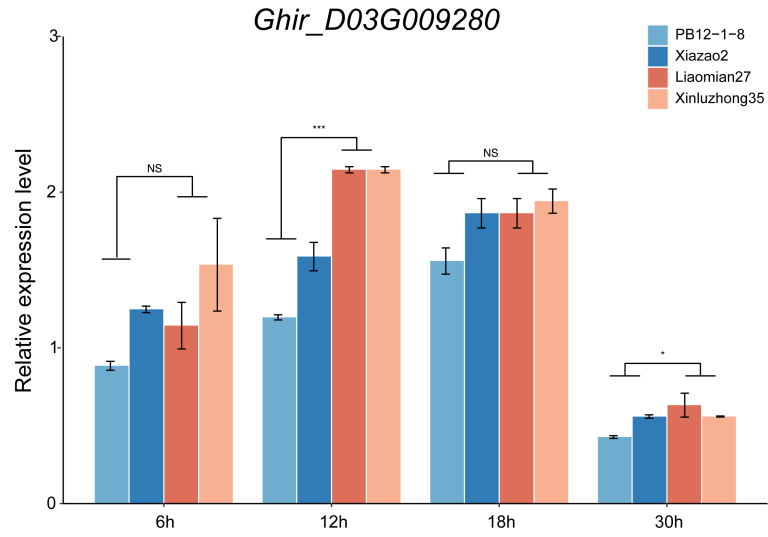


Fig. S5: Expression level analysis of *Ghir_D03G009280* between “Liaomian27”, ‘Xinluzhong35’, ‘PB12-1-8’, and ‘Xiazao2’ during seed germination stage (6, 12, 18 and 30 h) by qRT-PCR (** $P < 0.01$, * $P < 0.05$).