

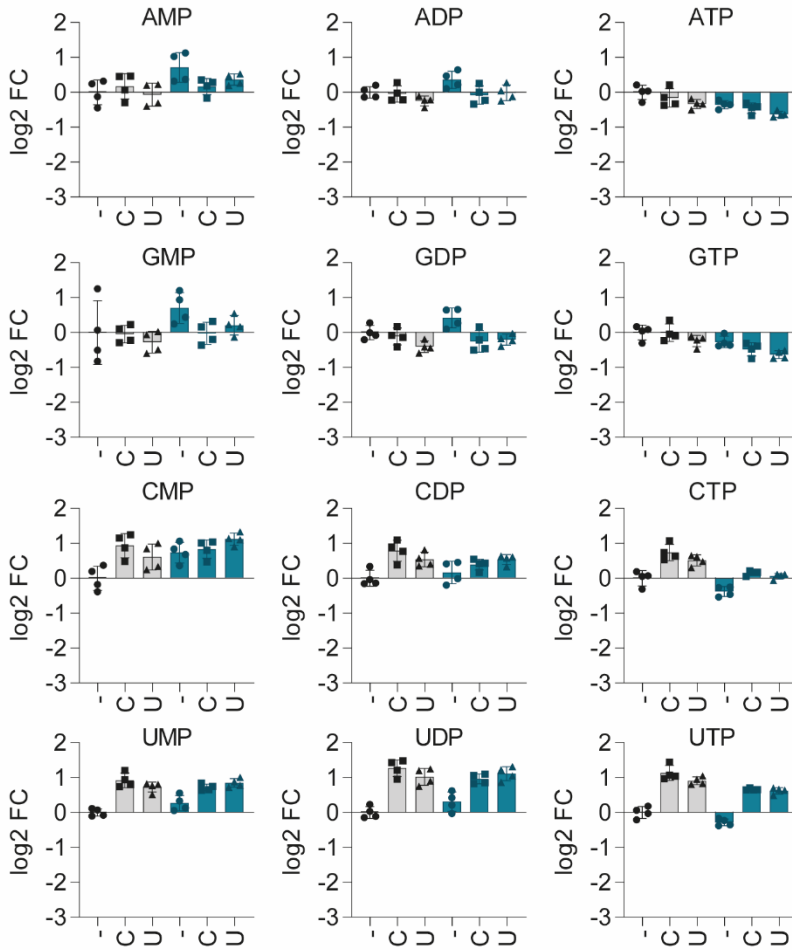
Table of contents

Appendix S1	2
Figure legend Appendix S1	3

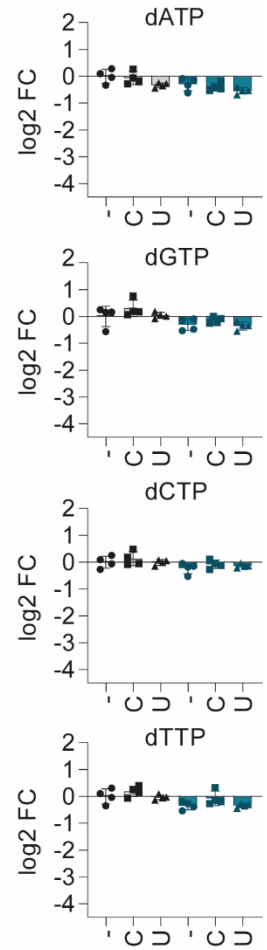
Appendix S1

- WT
- *NME6* KO

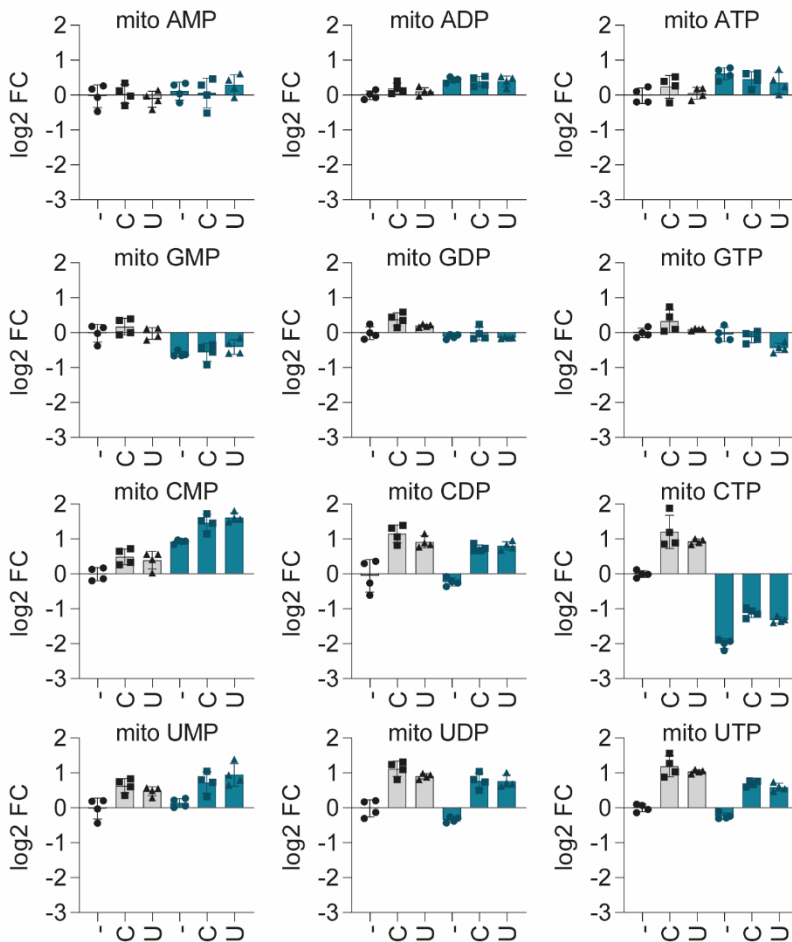
A



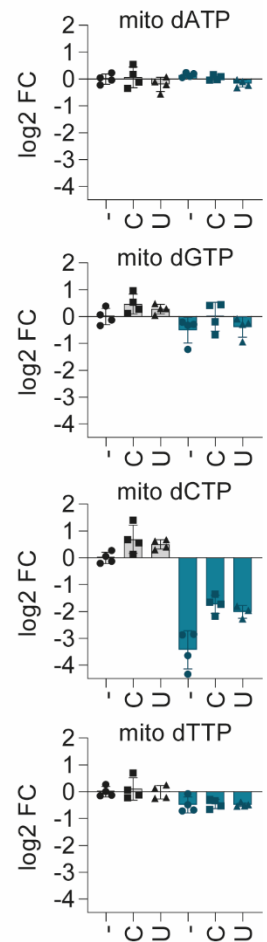
B



C



D



Appendix S1 – Pyrimidine nucleoside supplementation improves nucleotide scarcity in *NME6* KO HeLa cells

(A) Ribonucleotide levels of whole cell extracts of WT and *NME6* KO HeLa cells incubated with the indicated nucleoside species for 120 h as determined by quantitative mass spectrometry.

(B) Deoxyribonucleotide triphosphate levels of whole cell extracts of WT and *NME6* KO HeLa cells incubated with the indicated nucleoside species for 120 h as determined by quantitative mass spectrometry.

(C) Ribonucleotide levels of mitochondria enriched fractions of WT and *NME6* KO HeLa cells incubated with the indicated nucleoside species for 120 h as determined by quantitative mass spectrometry.

(D) Deoxyribonucleotide triphosphate levels of mitochondria enriched fractions of WT and *NME6* KO HeLa cells incubated with the indicated nucleoside species for 120 h as determined by quantitative mass spectrometry.

(log₂ fold change; n = 4 independent cultures)