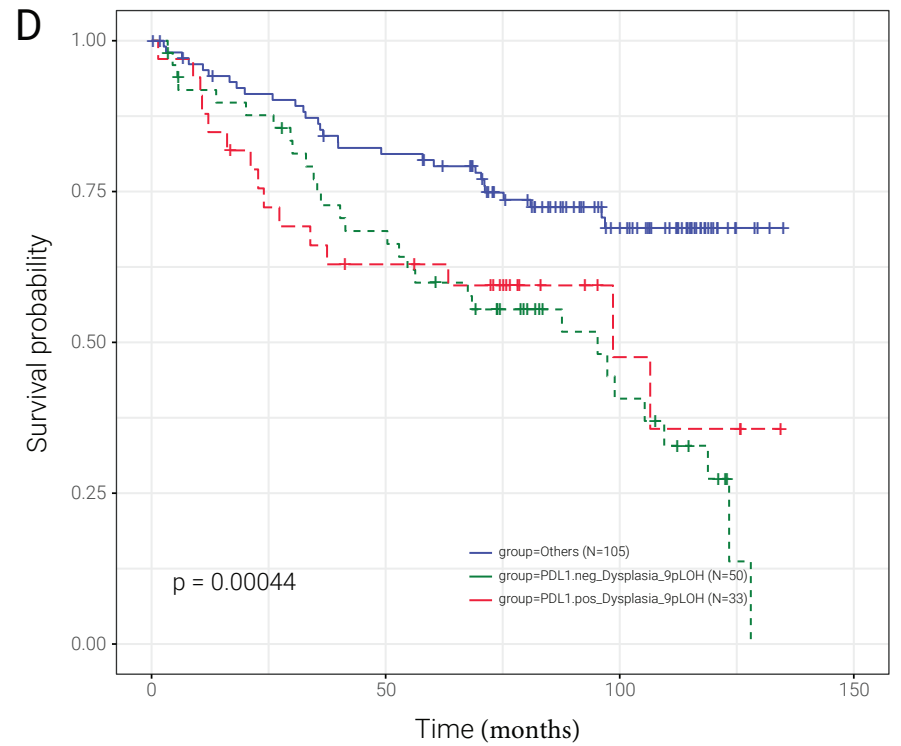
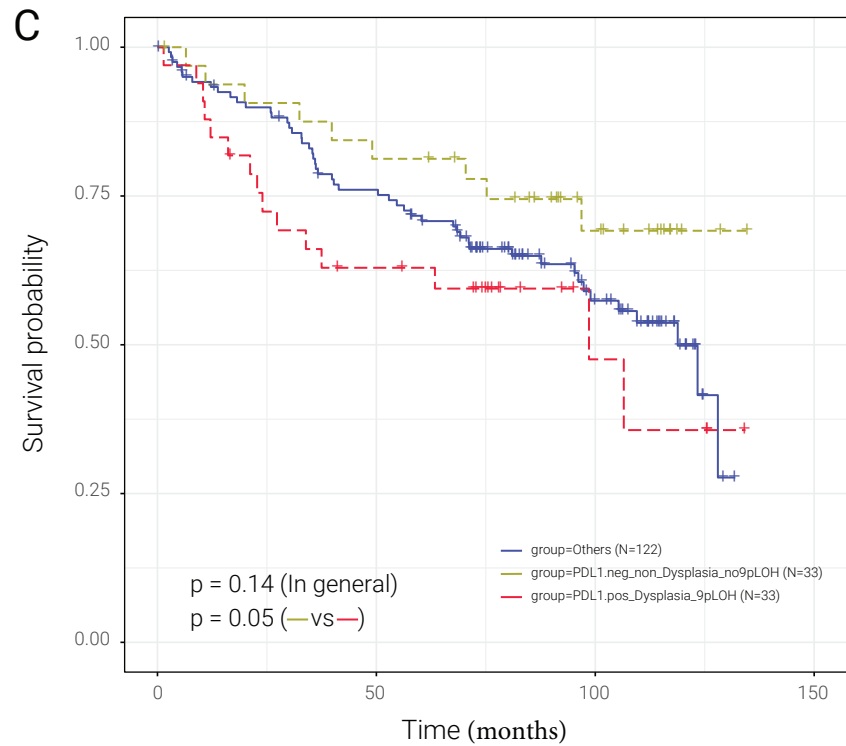
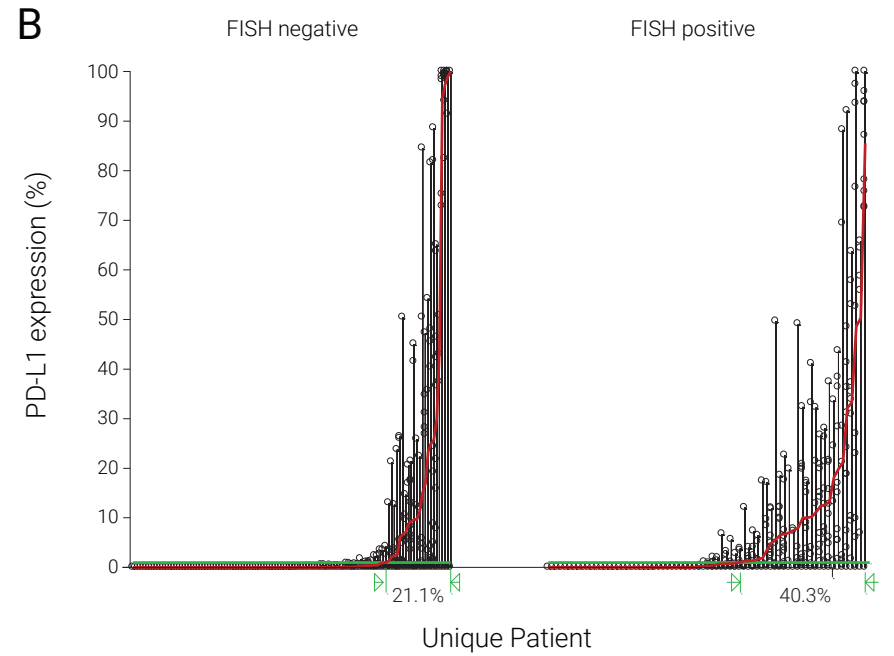
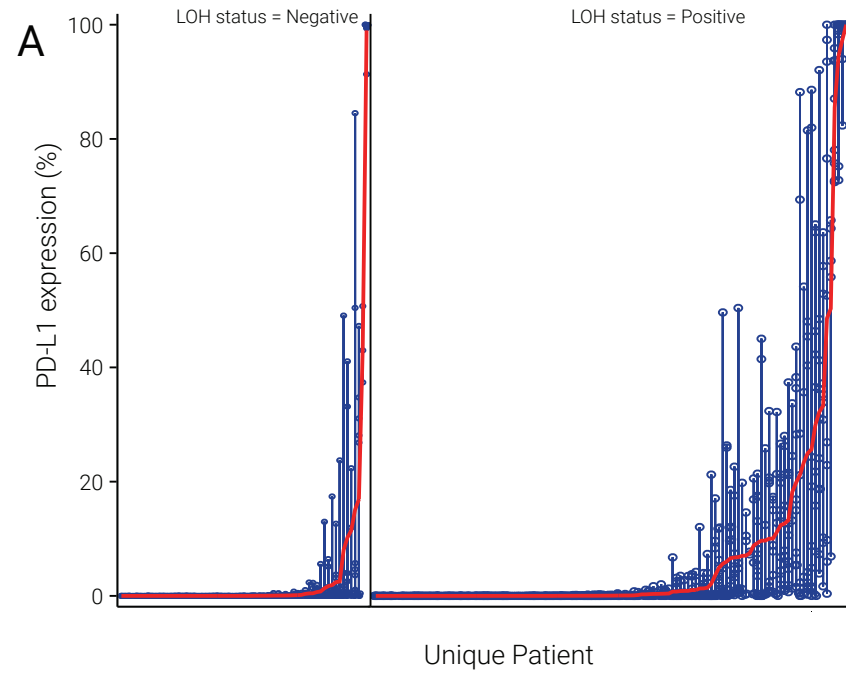


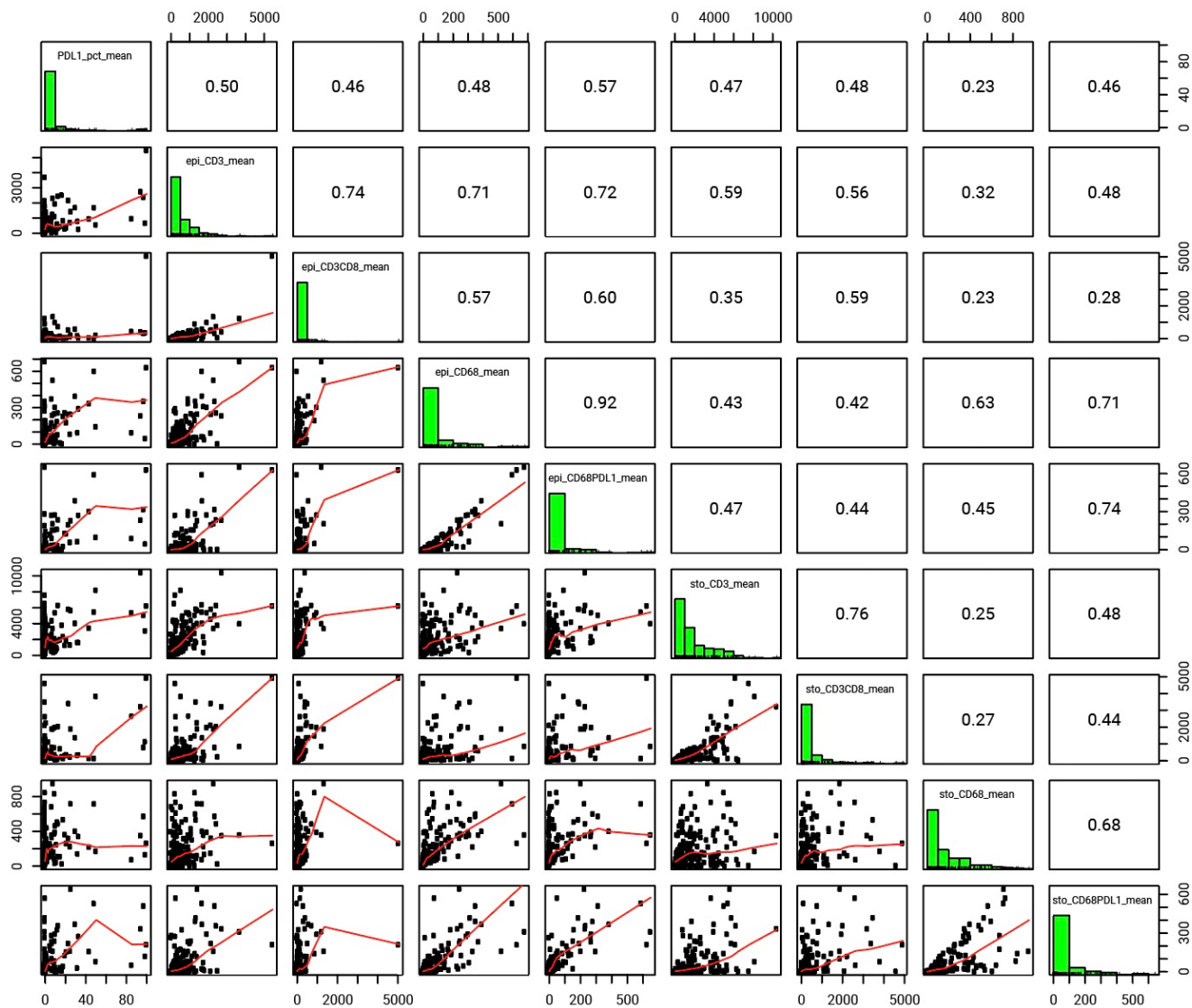
FIGURE S1



Supplemental Figure 1

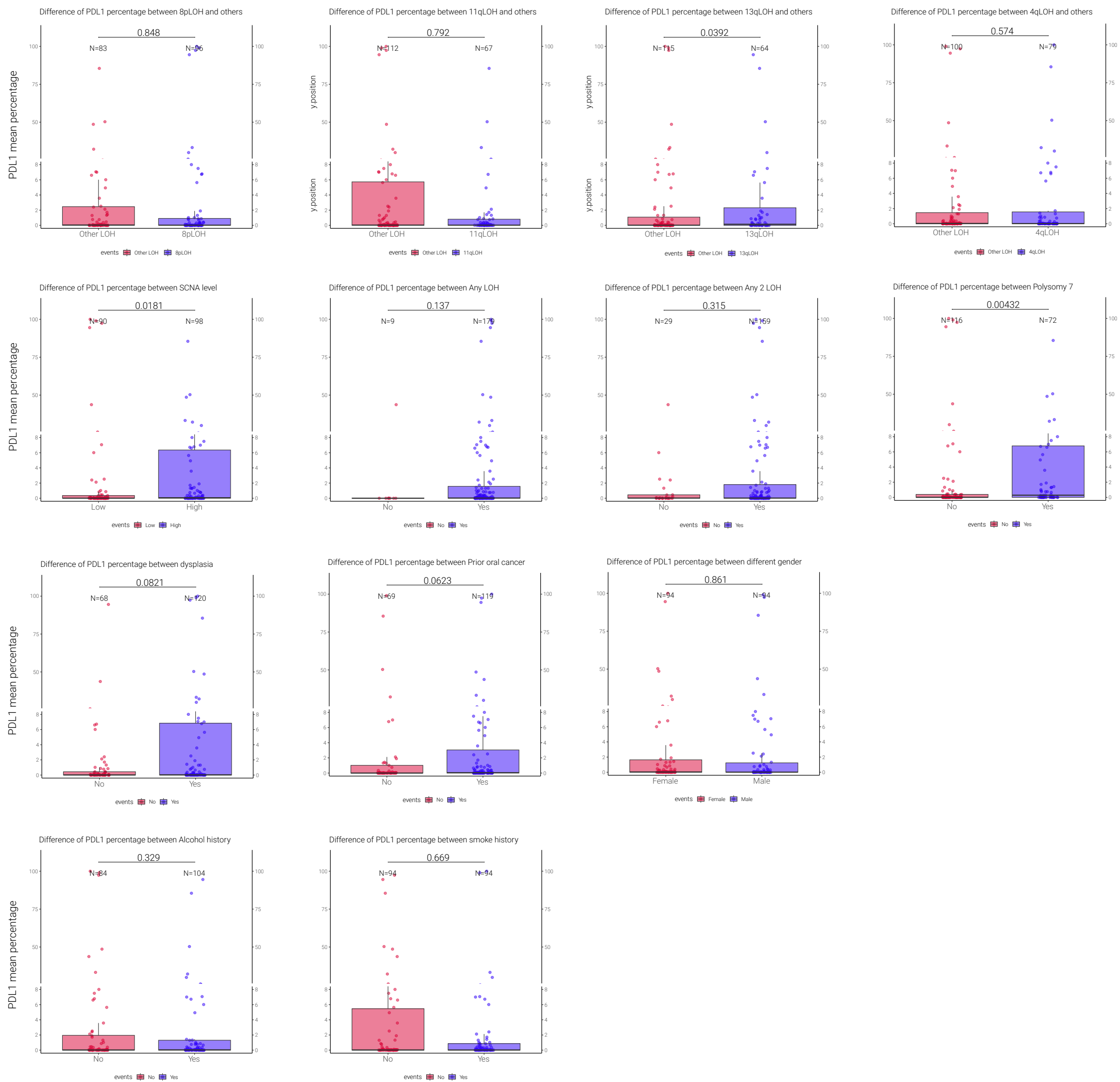
- A) PD-L1 expression for LOH negative patients and LOH positive patients.
- B) PD-L1 expression for chr7 polysomy negative (FISH-negative) and positive (FISH-positive) patients.
- C) Kaplan-Meier plots (months) for dysplasia, 9pLOH and PDL1 level based on RPA analysis. Yellow line represents patients with no dysplasia, no 9pLOH and PDL1 percentage <1% (N=33). Red line represents patients with dysplasia, 9pLOH and PDL1 percentage \geq 1% (N=33). Blue line represents other patients (N=122).
- D) Kaplan-Meier plots (months) for dysplasia, 9pLOH and PDL1 level based on RPA analysis. Red line represents patients with dysplasia, 9pLOH and PDL1 percentage \geq 1% (N=33). Green line represents patients with dysplasia, 9pLOH and PDL1 percentage <1% (N=50). Blue line represents other patients (N=105).

Figure S2



Supplemental Figure 2. Spearman correlation between different immune markers. epi CD3, epithelial CD3; str CD3, stromal CD3; total CD3, total CD3 level.

FIGURE S3



Supplemental Figure 3. Box plot of PD-L1 level between different parameters.

First row: Box plot of PD-L1 mean percentage between patients with 8pLOH and Other LOH, 11qLOH and Other LOH, 13qLOH and Other LOH, 4qLOH and Other LOH.

Second row: Box plot of PD-L1 mean percentage between patients with High SCNA and low SCNA, Any LOH and Others, Any 2 LOH and others, polysomy 7 and no polysomy 7.

Third row: Box plot of PD-L1 mean percentage between patients with dysplasia and no dysplasia, prior oral cancer and no prior oral cancer, female and male.

Fourth row: Box plot of PD-L1 mean percentage between patients with alcohol history and no alcohol history, smoking history and no smoking history.