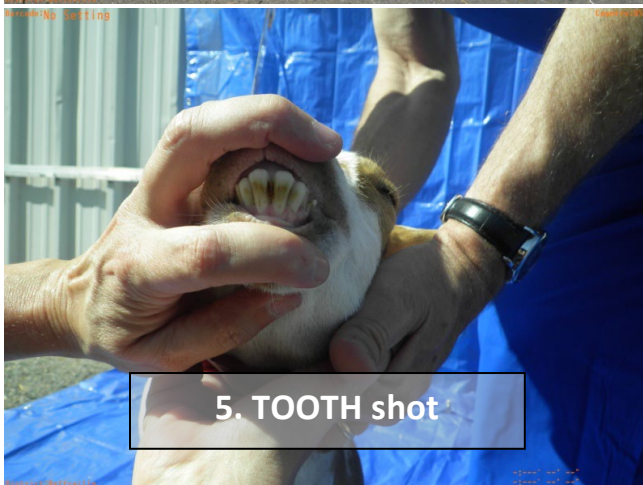
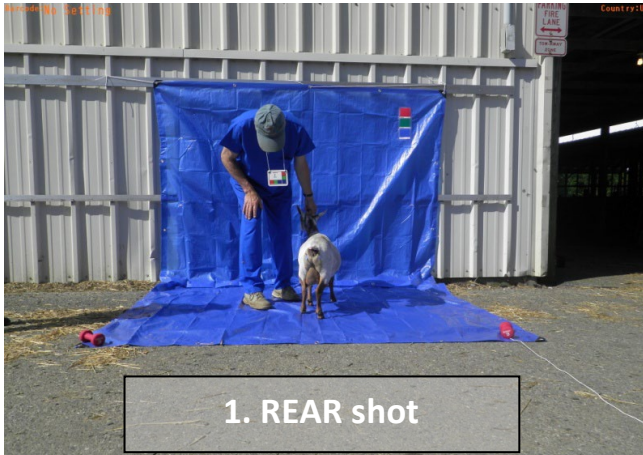


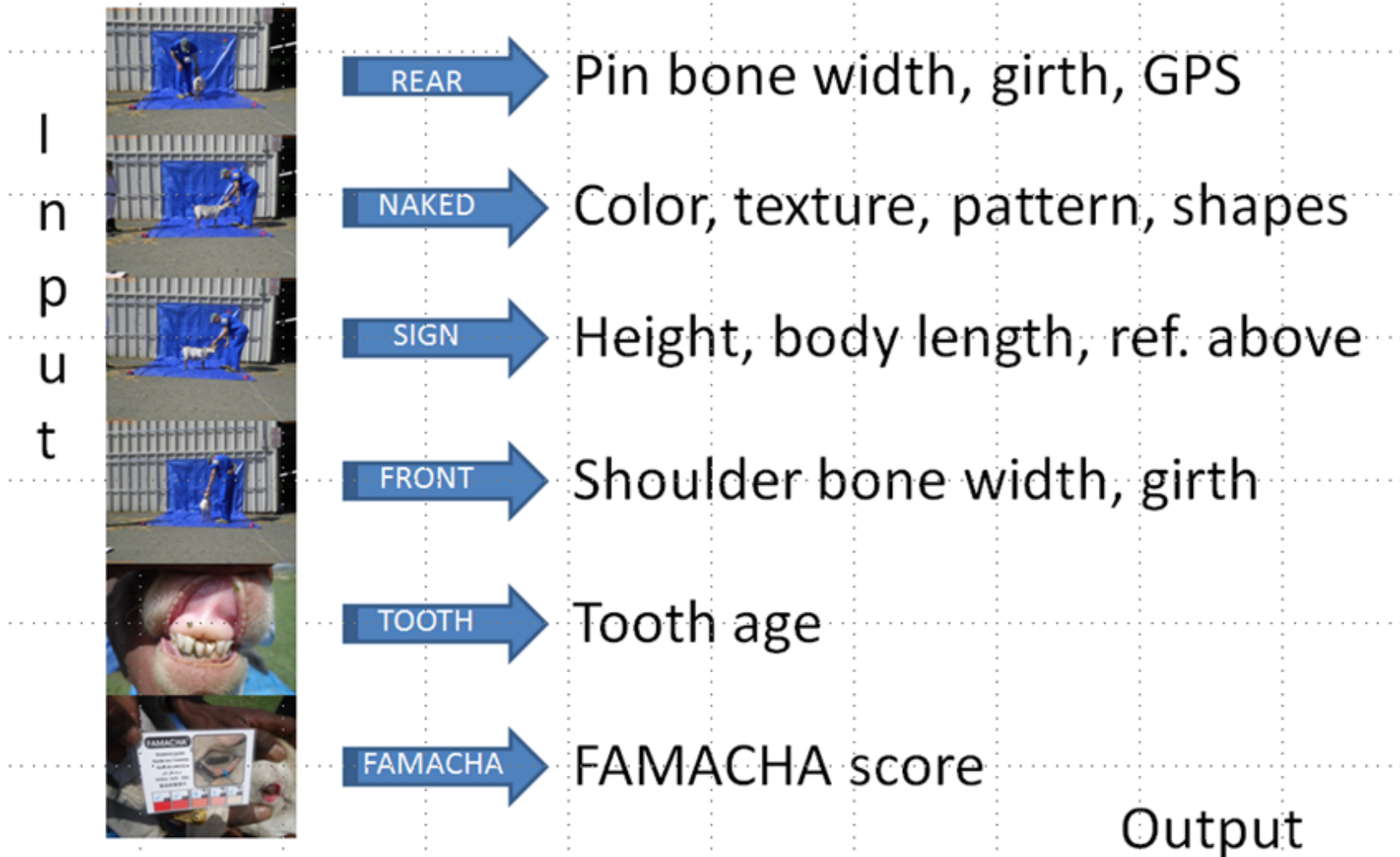


# ADAPTMap SAMPLE SERIES note position of signs, handler, tarps, weights



Set-up in flat, open space. Tarps connect at bottom; eliminate folds and ripples. Handler must wear blue top and bottoms. Shoot the photo series in the above sequence, camera perpendicular to goat, and at goat-eye-level. Use calibration rope to ensure camera is 3 M back from goat. Handler or other objects must not be between goat, including goat's feet/legs, and the back tarp. The small sign is visible in all distance shots. Avoid placing unnecessary objects on the tarps, and pull any lead ropes away from the goat's body.

# Digital Image Analysis Workflow



Set-up in flat, open space. Tarps connect at bottom; eliminate folds and ripples. Handler must wear blue top and bottoms. Shoot the photo series in the above sequence, camera perpendicular to goat, and at goat-eye-level. Use calibration rope to ensure camera is 3 M back from goat. Handler or other objects must not be between goat, including goat's feet/legs, and the back tarp. The small sign is visible in all distance shots. Avoid placing unnecessary objects on the tarps, and pull any lead ropes away from the goat's body.