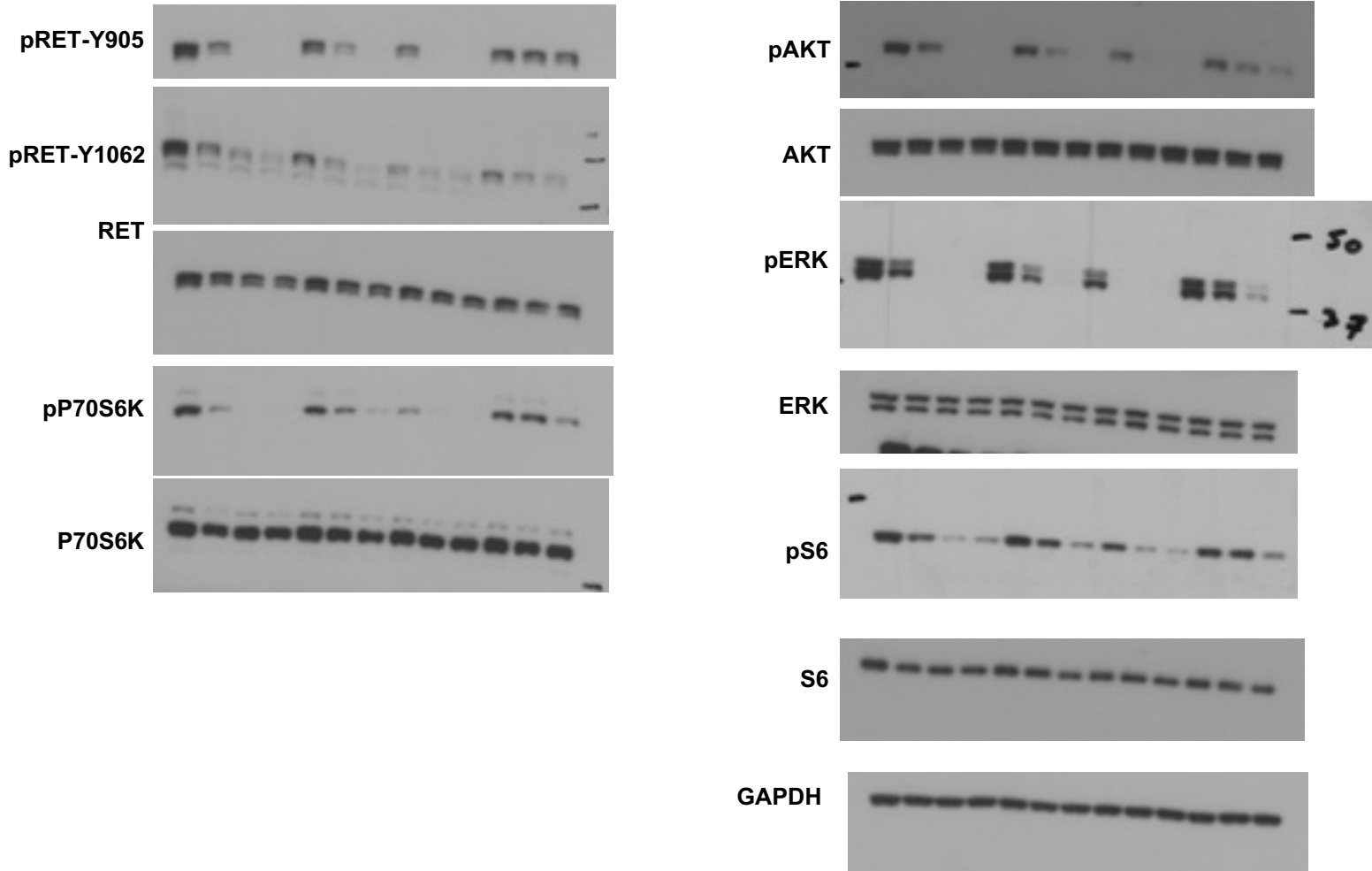


# Source Data Fig. 3a

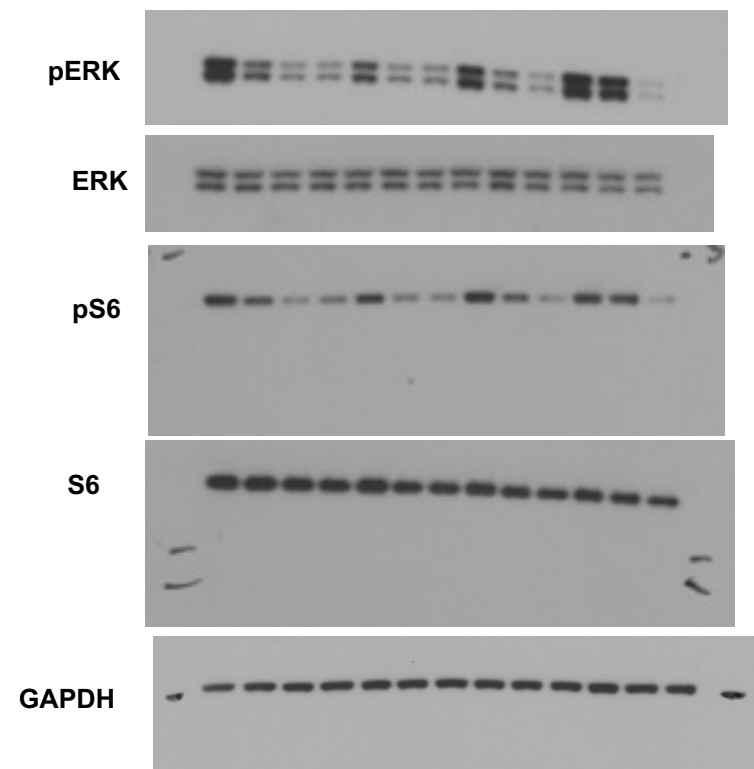
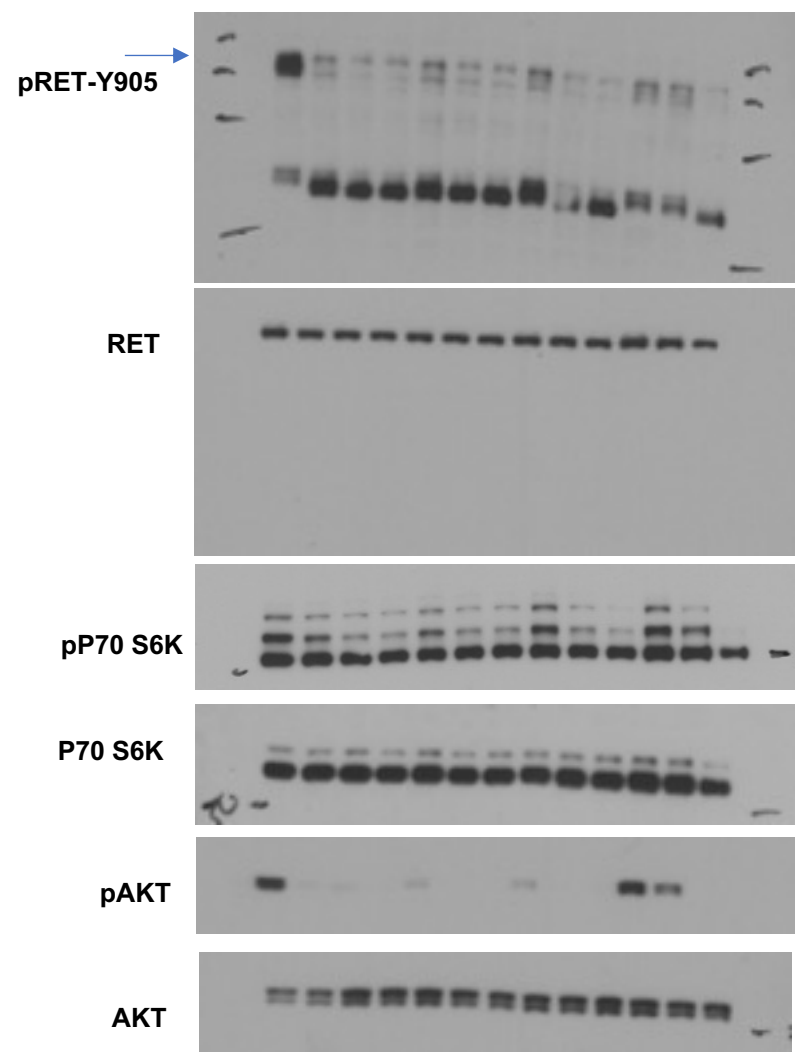
## LUAD-0002AS1



Membranes were cut and each piece probed for the proteins indicated. The blots shown are the entire piece probed and taken directly from the x-ray film without any further modification. Where multiple bands are evident, the arrow indicates the protein of interest. Black check (pen) marks on some blots indicate molecular weight markers placed on film after development.

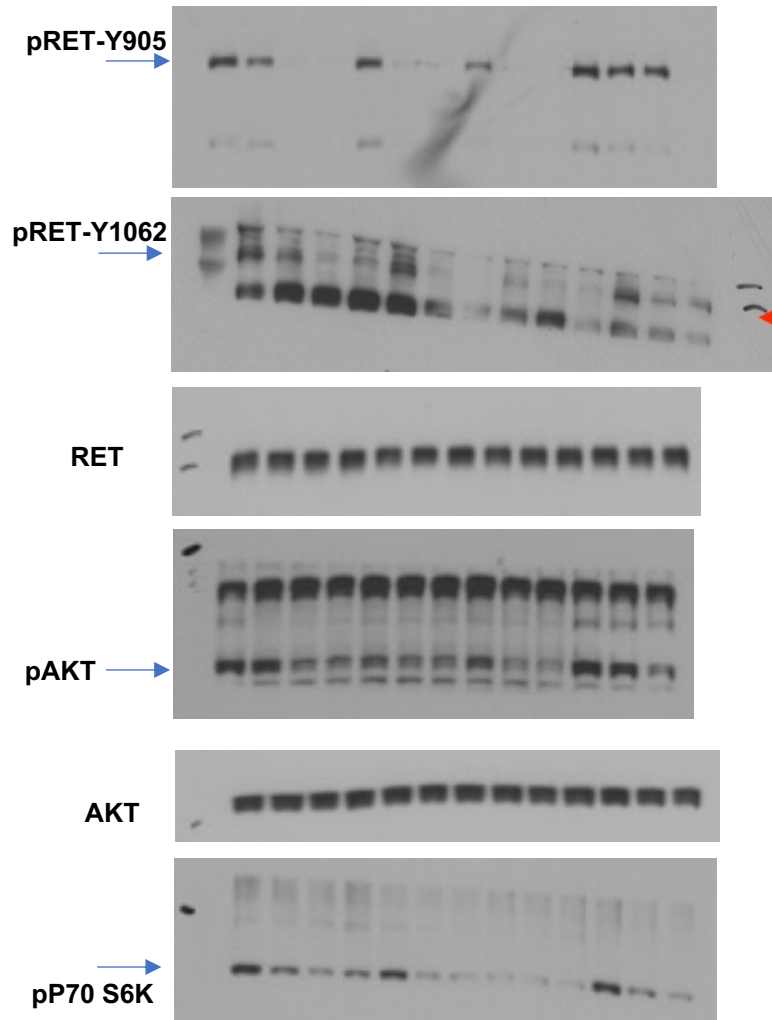
## Source Data Fig. 3a

## ECLC5B

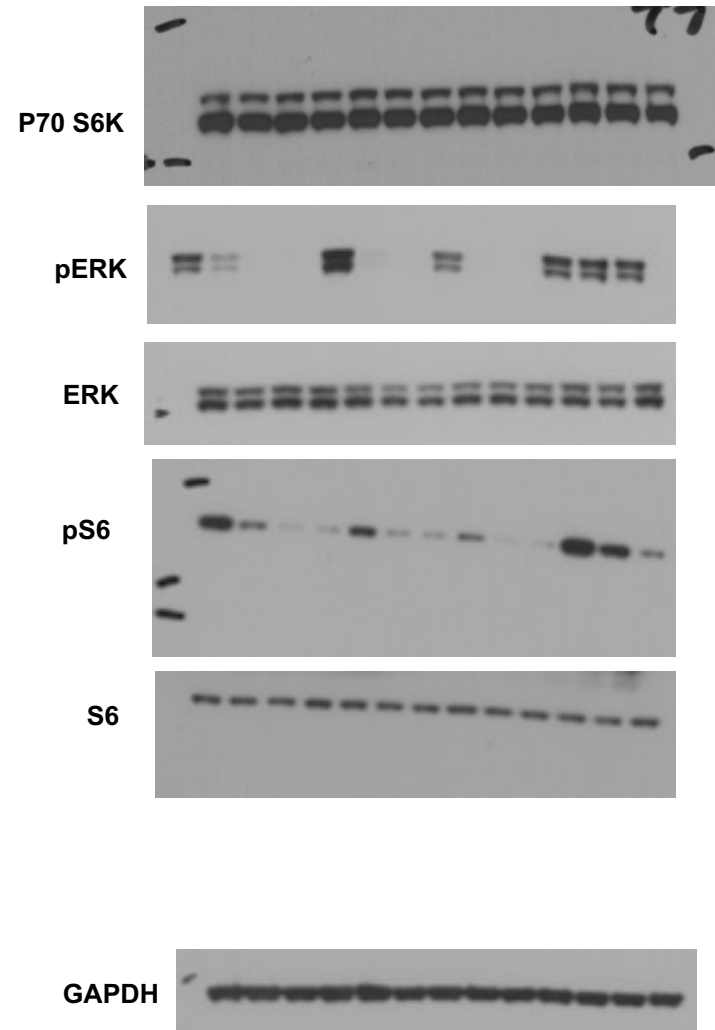


Membranes were cut and each piece probed for the proteins indicated. The blots shown are the entire piece probed and taken directly from the x-ray film without any further modification. Where multiple bands are evident, the arrow indicates the protein of interest. Black check (pen) marks on some blots indicate molecular weight markers placed on film after development.

## Source Data Fig. 3a

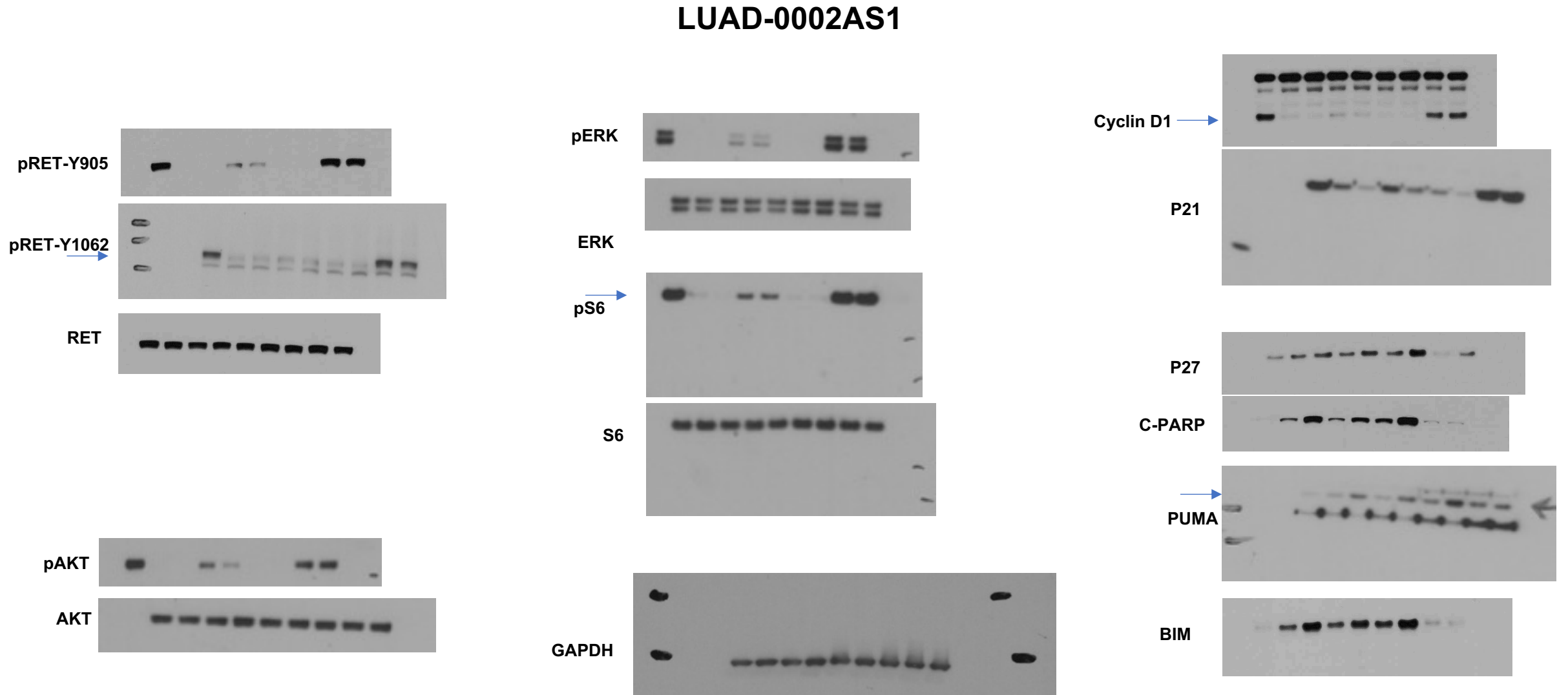


## TT Cells



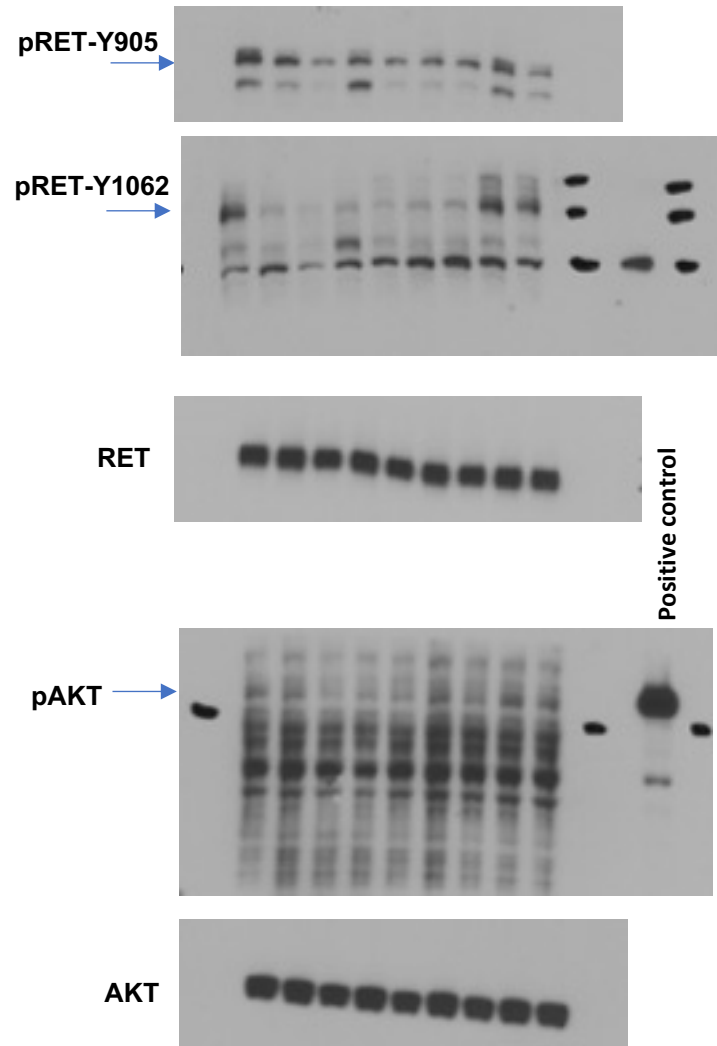
Membranes were cut and each piece probed for the proteins indicated. The blots shown are the entire piece probed and taken directly from the x-ray film without any further modification. Where multiple bands are evident, the arrow indicates the protein of interest. Black check (pen) marks on some blots indicate molecular weight markers placed on film after development.

# Source Data Fig. 4a

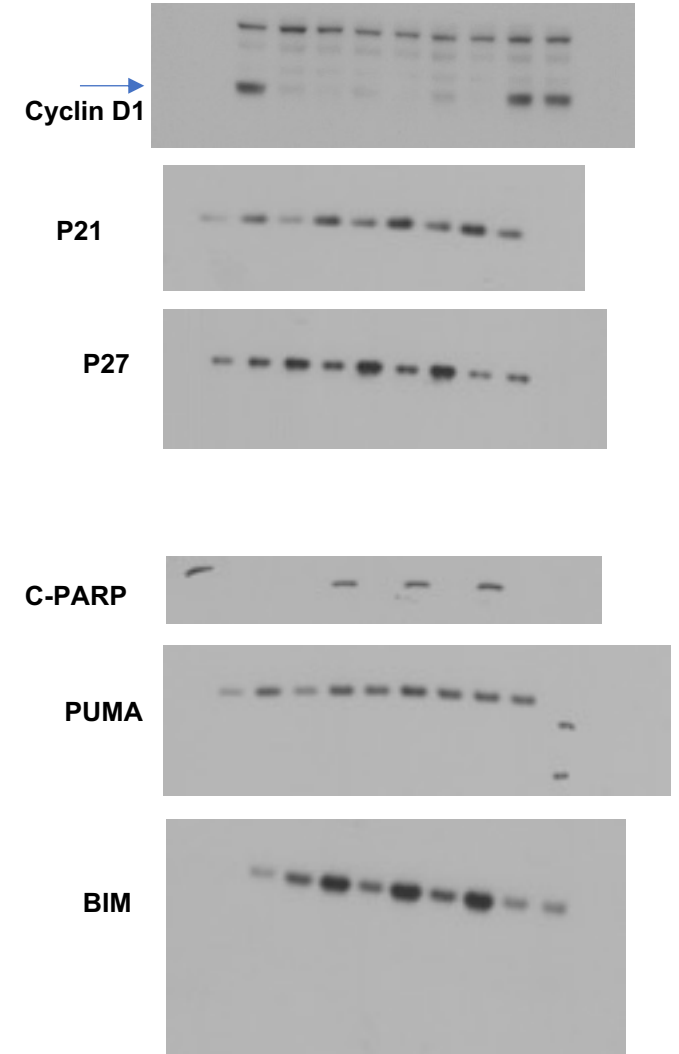
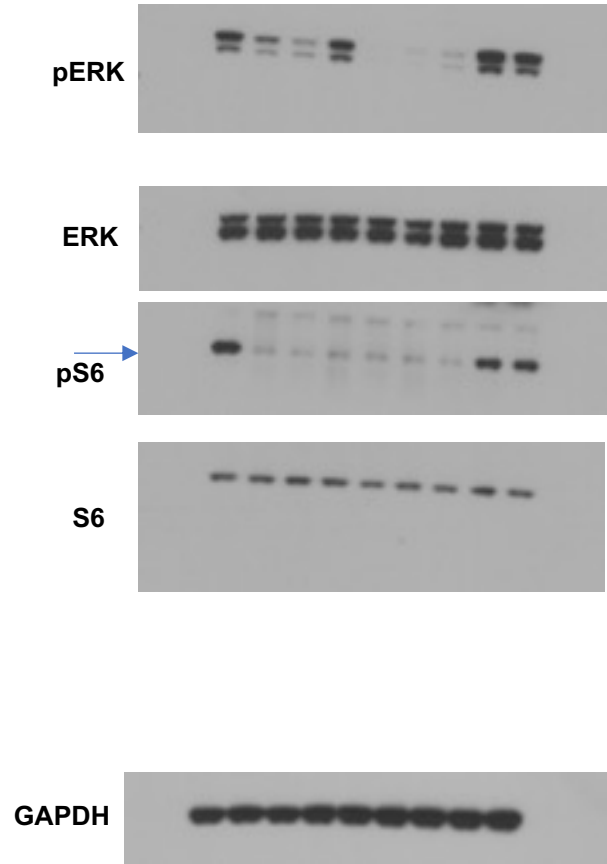


Membranes were cut and each piece probed for the proteins indicated. The blots shown are the entire piece probed and taken directly from the x-ray film without any further modification. Where multiple bands are evident, the arrow indicates the protein of interest. Black check (pen) marks on some blots indicate molecular weight markers placed on film after development.

## Source Data Fig. 4a

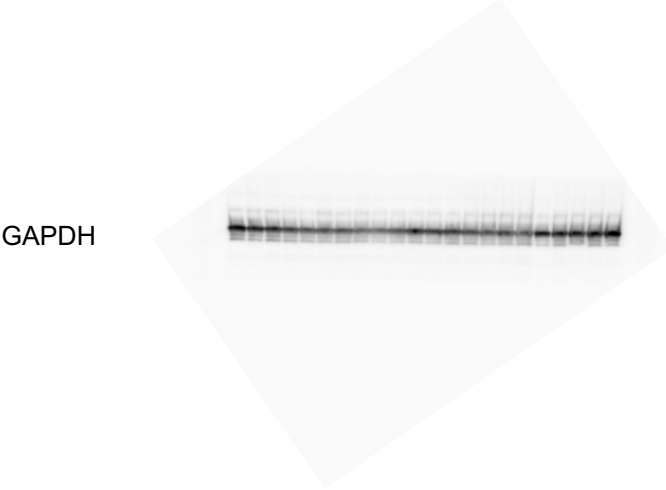
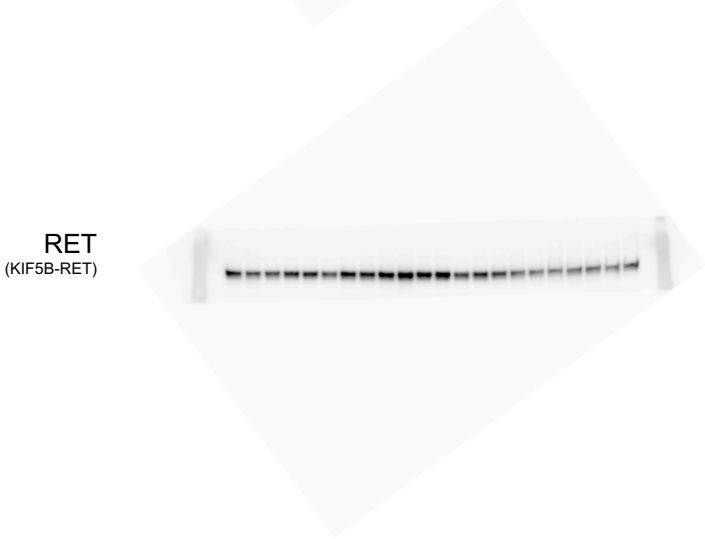
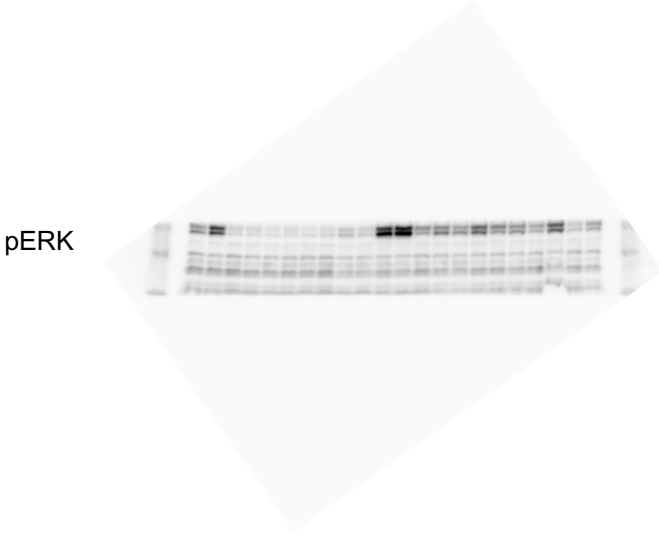
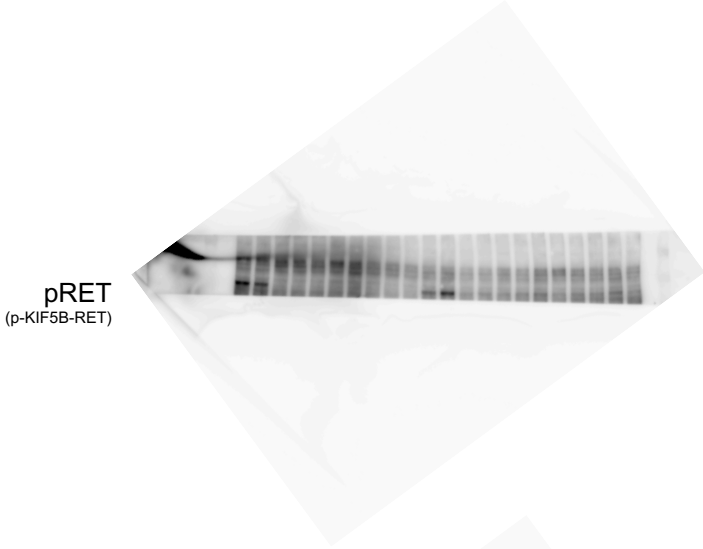


## TT Cells



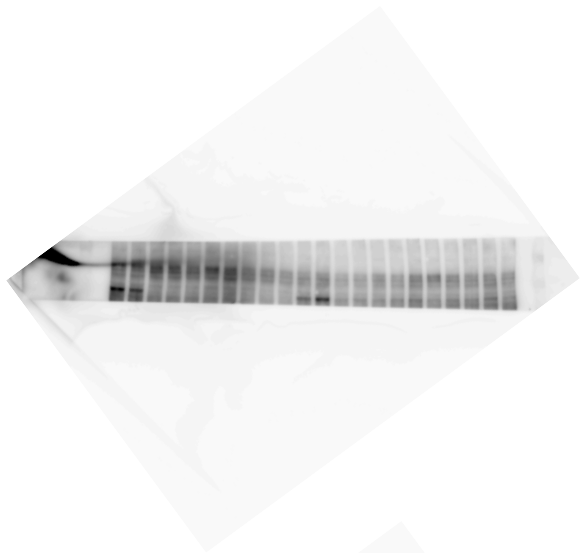
Membranes were cut and each piece probed for the proteins indicated. The blots shown are the entire piece probed and taken directly from the x-ray film without any further modification. Where multiple bands are evident, the arrow indicates the protein of interest. Black check (pen) marks on some blots indicate molecular weight markers placed on film after development.

Source Data Fig. 7b

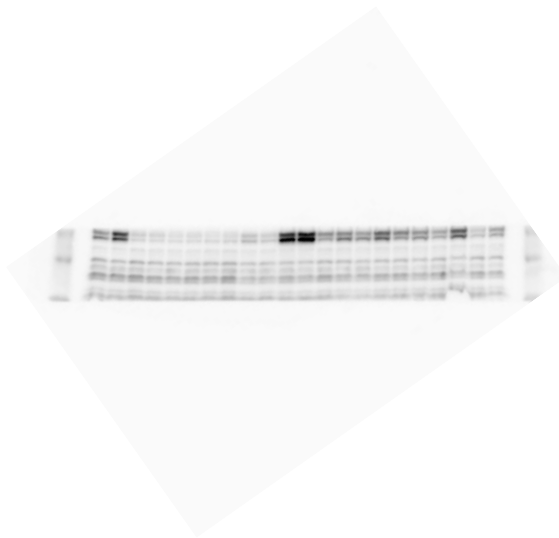


# Source Data Fig. 7e

pRET  
(p-KIF5B-RET)



pERK



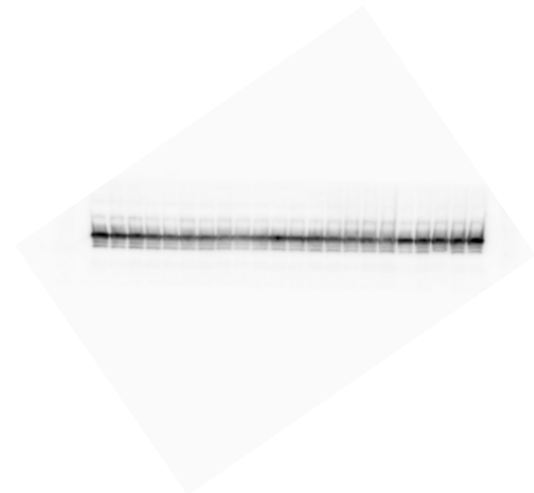
RET  
(KIF5B-RET)



ERK

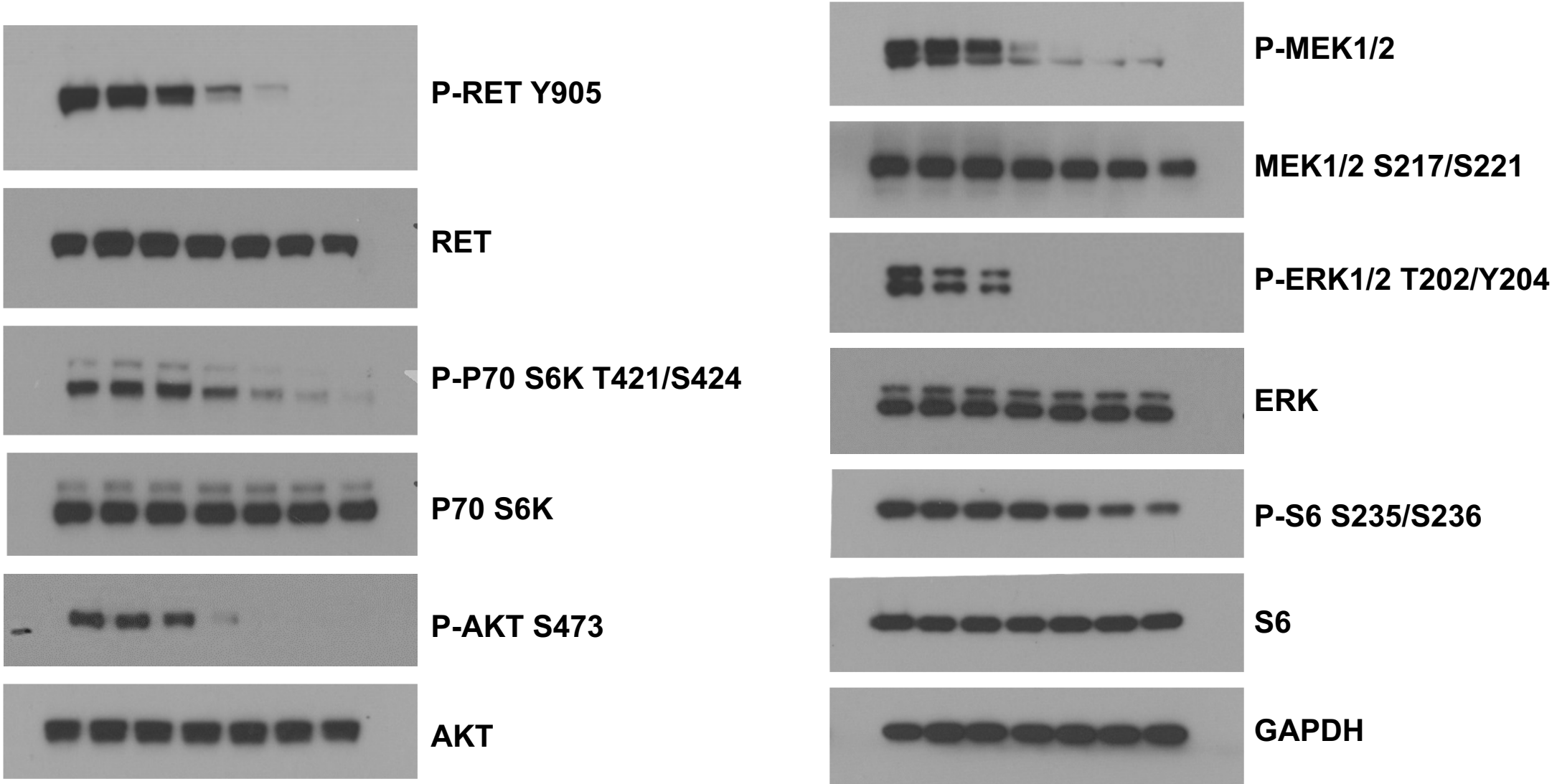


GAPDH



Source Data Extended Data Figure 4a

LUAD-0002AS1: Vepafestinib



Membranes were cut and each piece probed for the proteins indicated. The blots shown are the entire piece probed and taken directly from the x-ray film without any further modification. Where multiple bands are evident, the arrow indicates the protein of interest. Black check (pen) marks on some blots indicate molecular weight markers placed on film after development.

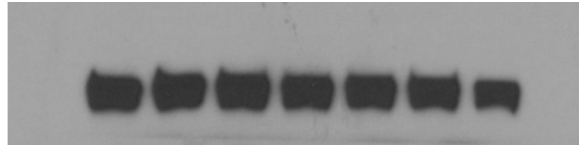


# Source Data Extended Data Figure 4a

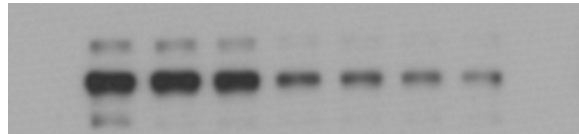
## LUAD-0002AS1: Selpercatinib



P-RET Y905



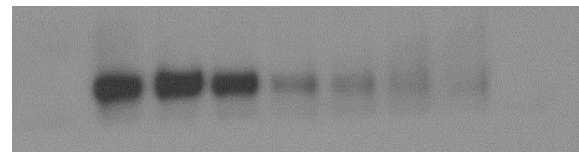
RET



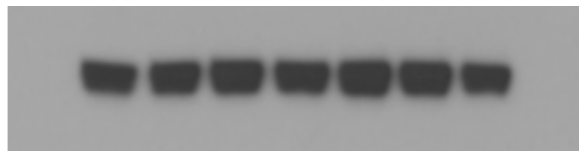
P-P70 S6K T421/S424



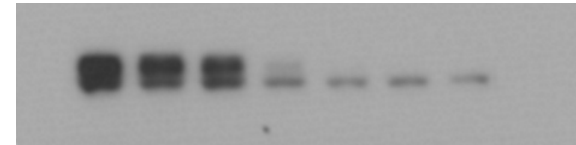
P70 S6K



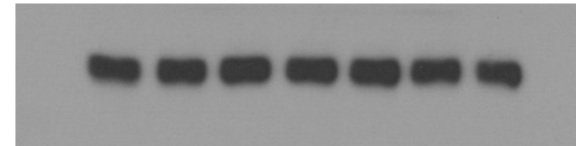
P-AKT S473



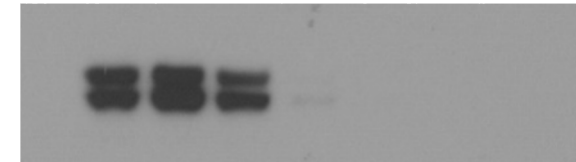
AKT



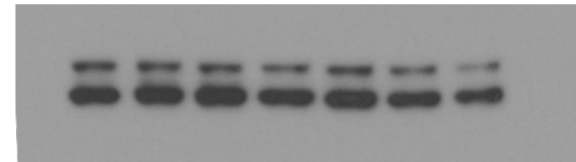
P-MEK1/2



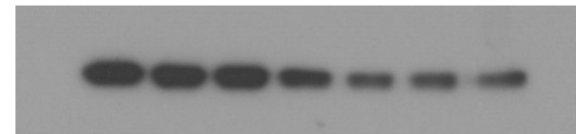
MEK1/2 S217/S221



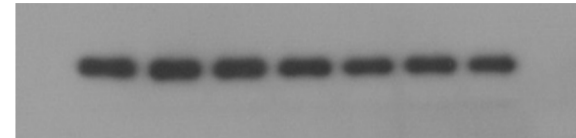
P-ERK1/2 T202/Y204



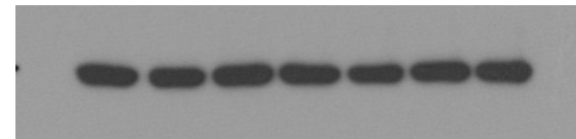
ERK



P-S6 S235/S236



S6

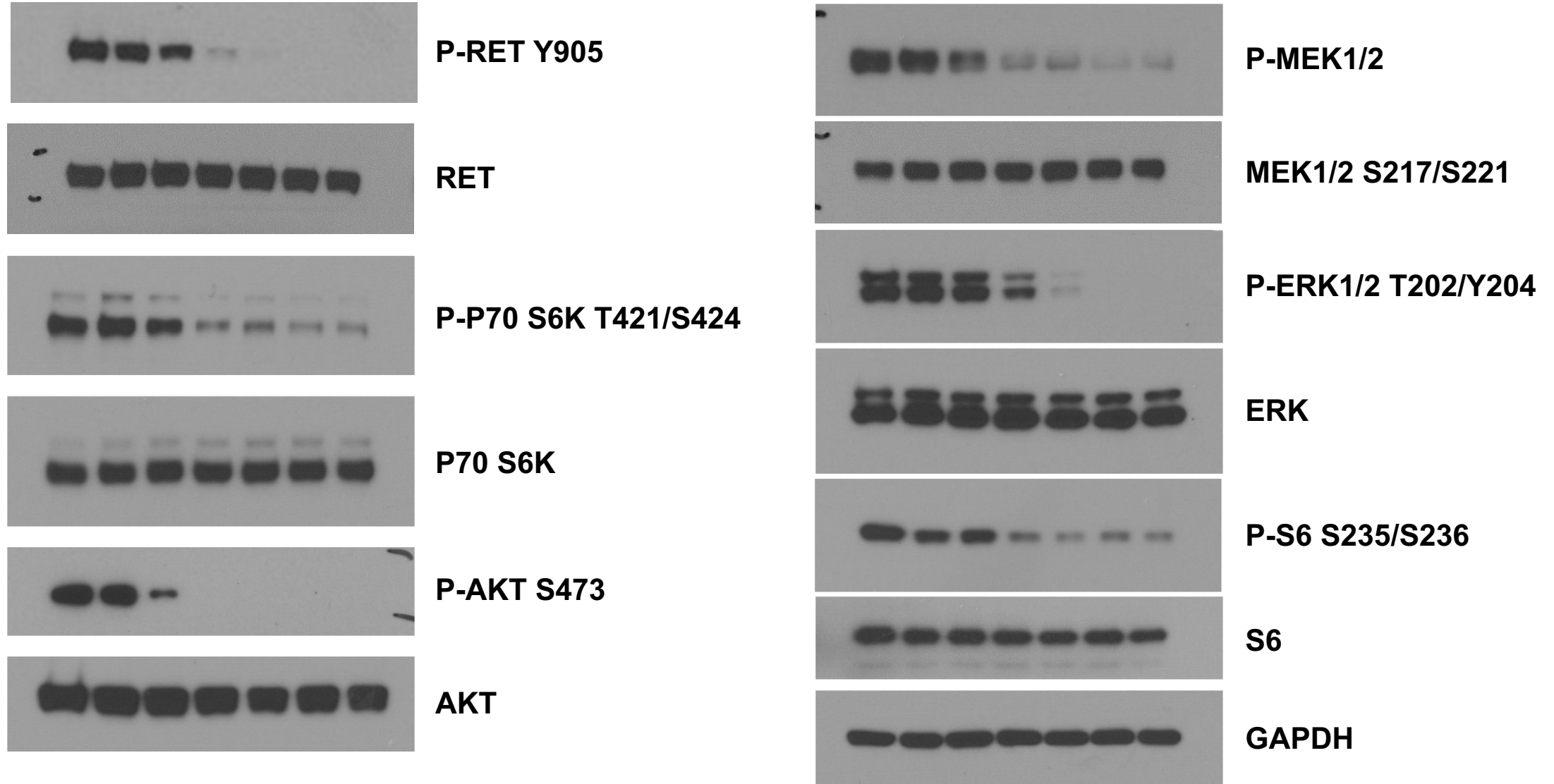


GAPDH

Membranes were cut and each piece probed for the proteins indicated. The blots shown are the entire piece probed and taken directly from the x-ray film without any further modification. Where multiple bands are evident, the arrow indicates the protein of interest. Black check (pen) marks on some blots indicate molecular weight markers placed on film after development.

# Source Data Extended Data Figure 4a

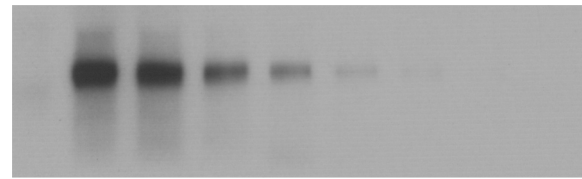
## LUAD-0002AS1: Pralsetinib



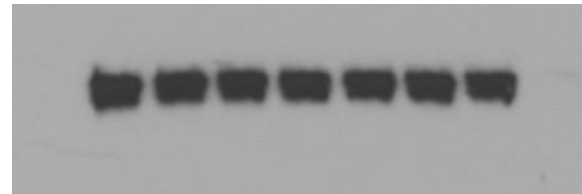
Membranes were cut and each piece probed for the proteins indicated. The blots shown are the entire piece probed and taken directly from the x-ray film without any further modification. Where multiple bands are evident, the arrow indicates the protein of interest. Black check (pen) marks on some blots indicate molecular weight markers placed on film after development.

# Source Data Extended Data Figure 4b

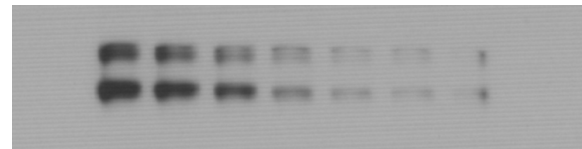
## TT Cells: Vepafestinib



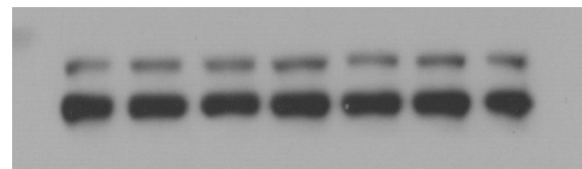
P-RET Y905



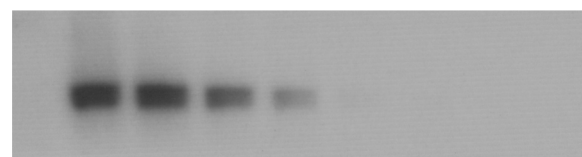
RET



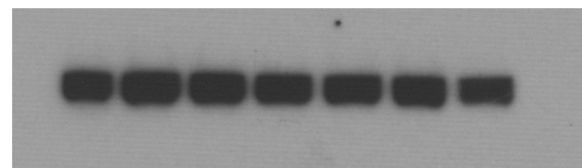
P-P70 S6K T421/S424



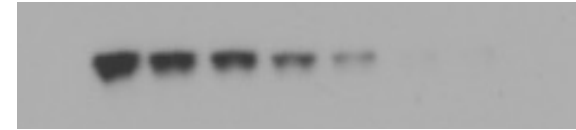
P70 S6K



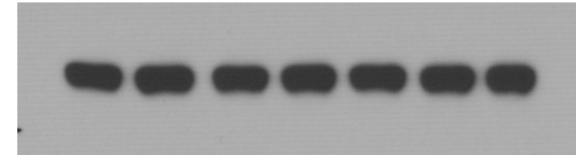
P-AKT S473



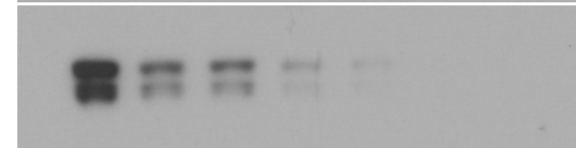
AKT



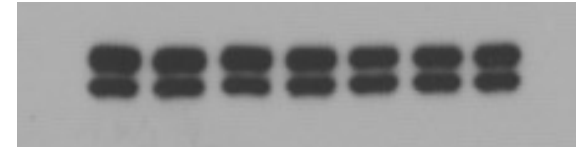
P-MEK1/2



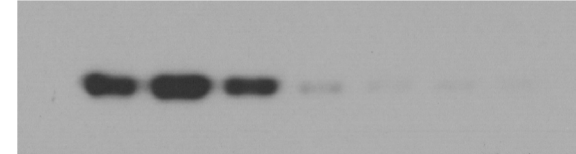
MEK1/2 S217/S221



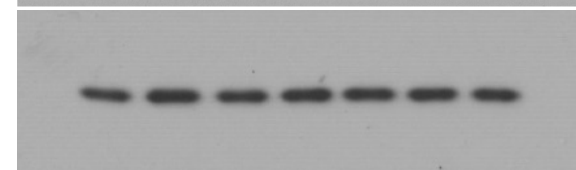
P-ERK1/2 T202/Y204



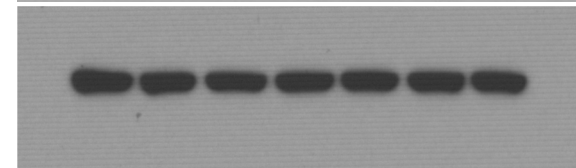
ERK



P-S6 S235/S236



S6

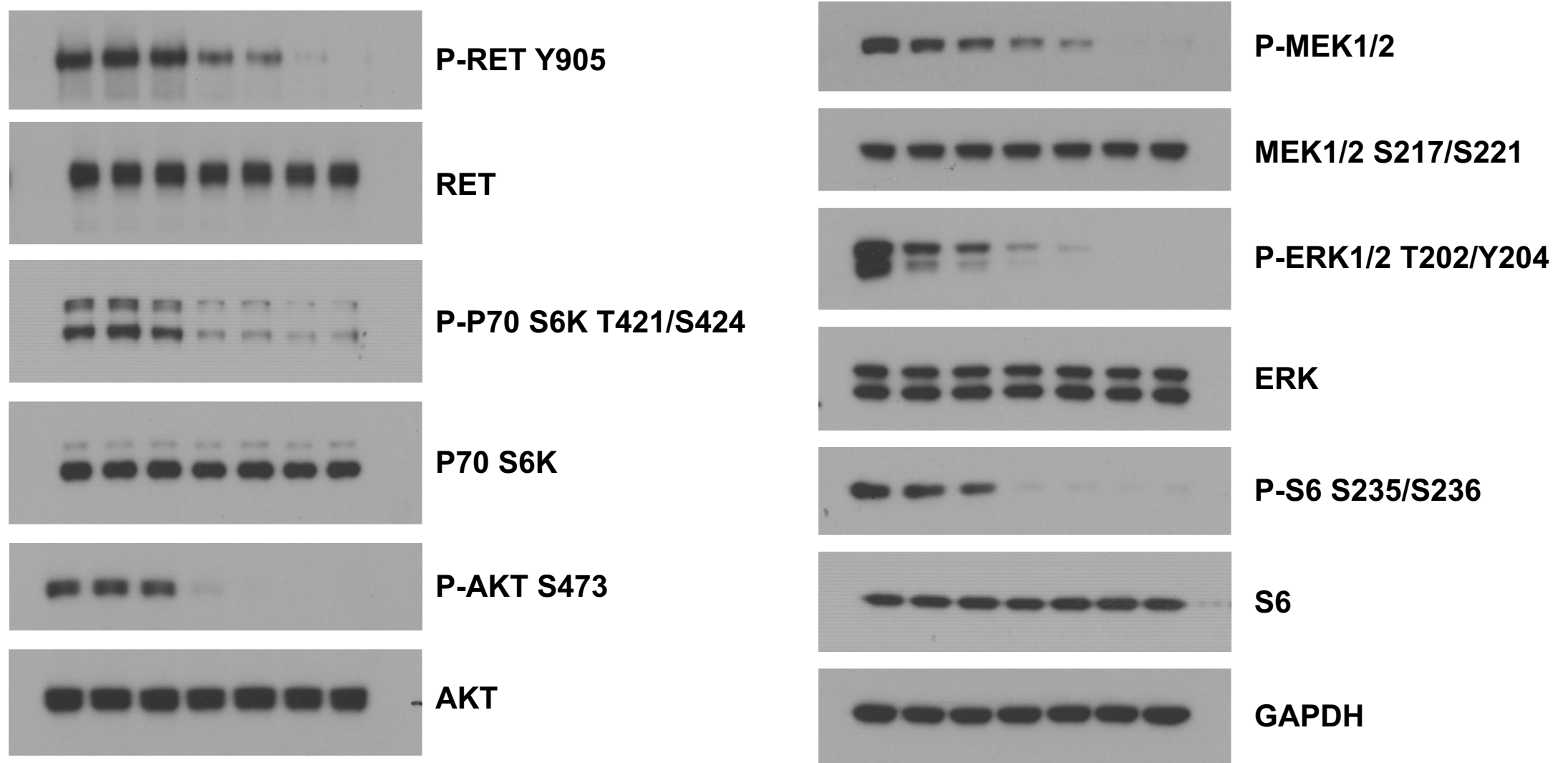


GAPDH

Membranes were cut and each piece probed for the proteins indicated. The blots shown are the entire piece probed and taken directly from the x-ray film without any further modification. Where multiple bands are evident, the arrow indicates the protein of interest. Black check (pen) marks on some blots indicate molecular weight markers placed on film after development.

# Source Data Extended Data Figure 4b

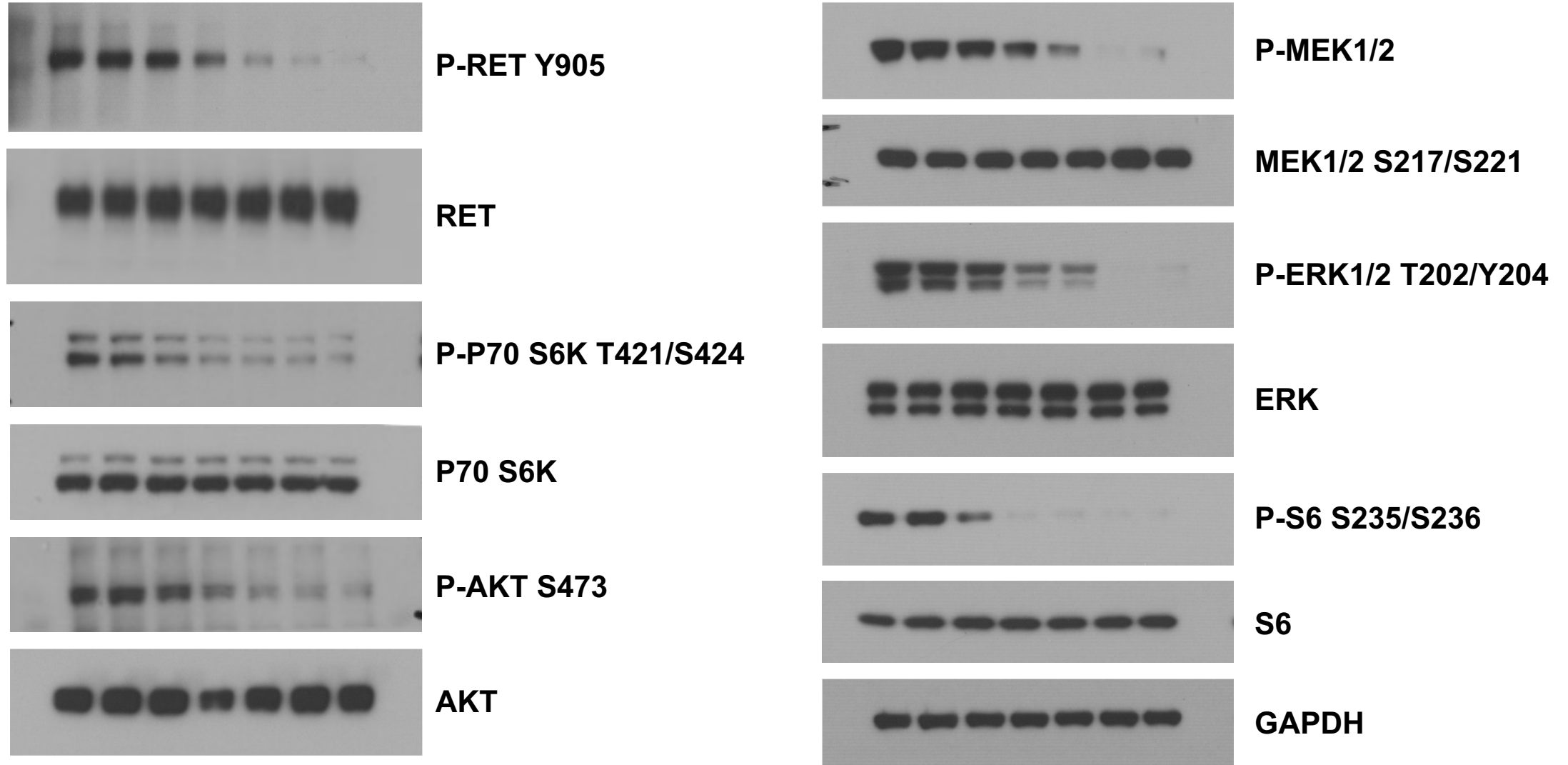
## TT Cells: Selpercatinib



Membranes were cut and each piece probed for the proteins indicated. The blots shown are the entire piece probed and taken directly from the x-ray film without any further modification. Where multiple bands are evident, the arrow indicates the protein of interest. Black check (pen) marks on some blots indicate molecular weight markers placed on film after development.

# Source Data Extended Data Figure 4b

## TT Cells: Pralsetinib



Membranes were cut and each piece probed for the proteins indicated. The blots shown are the entire piece probed and taken directly from the x-ray film without any further modification. Where multiple bands are evident, the arrow indicates the protein of interest. Black check (pen) marks on some blots indicate molecular weight markers placed on film after development.