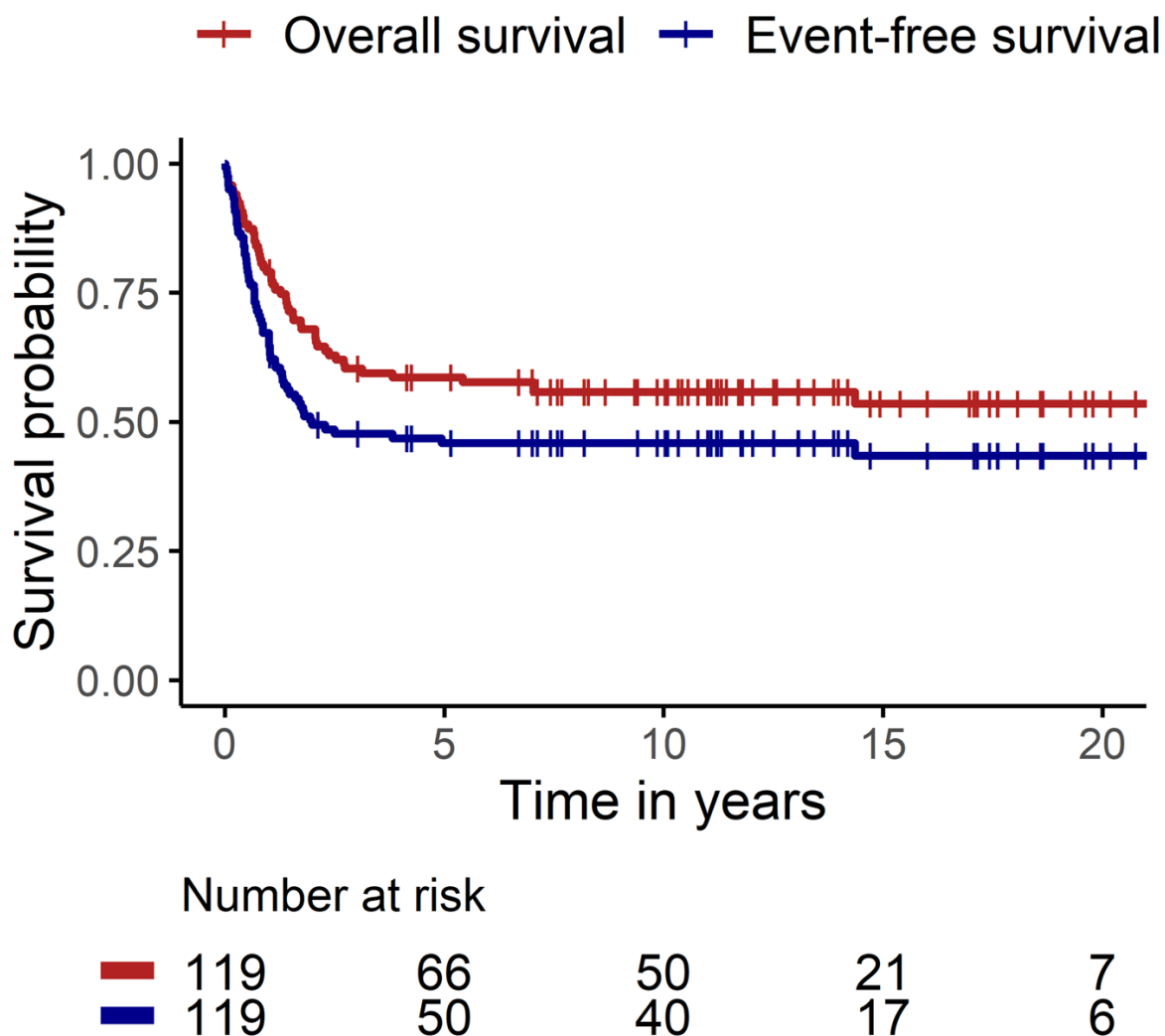
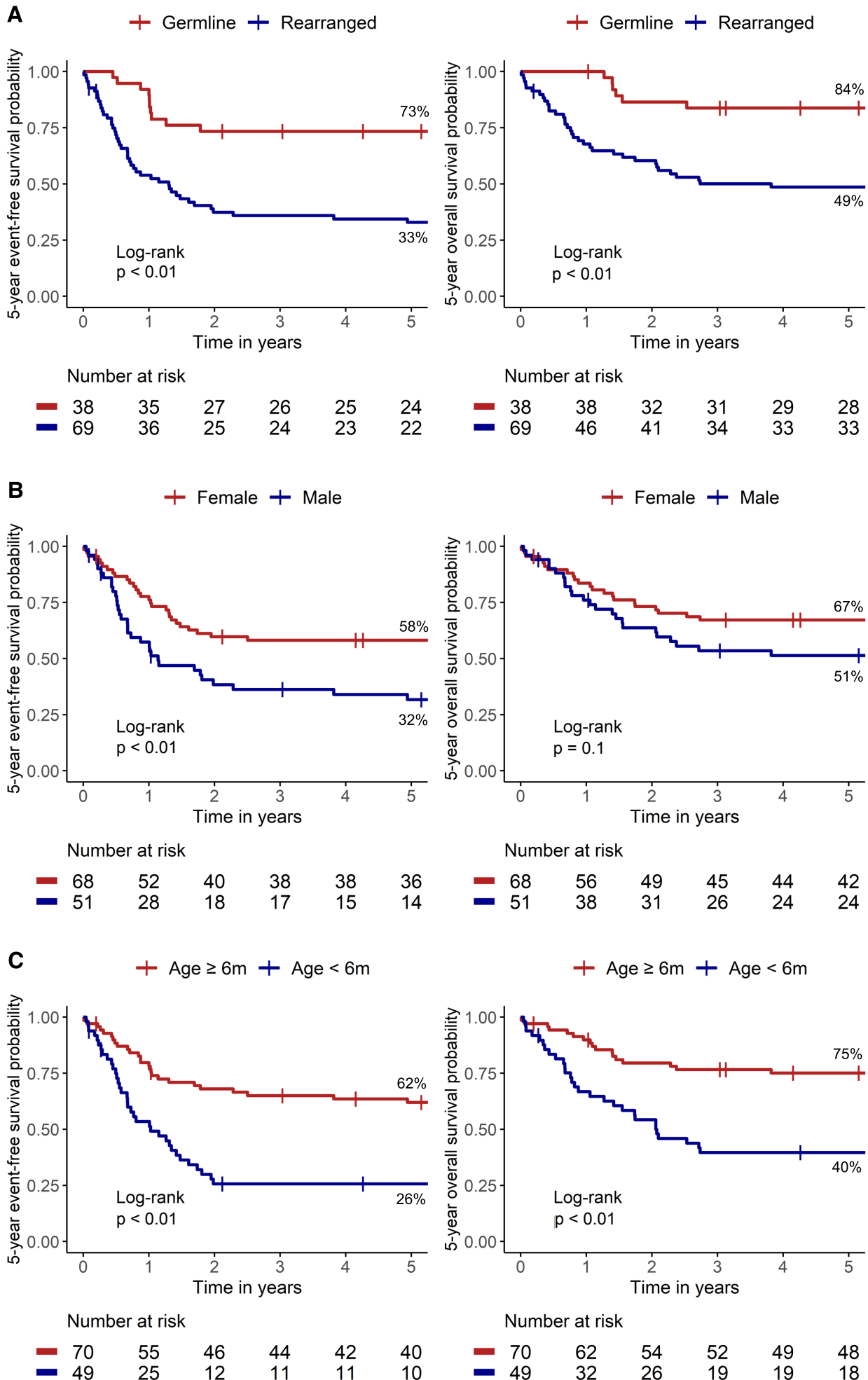
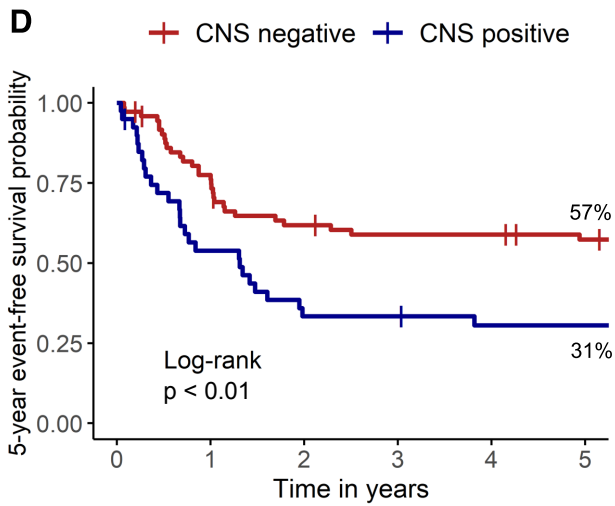


Supplementary Figure 1. Kaplan-Meier survival curve showing 20-year event-free and overall survival of infants with acute lymphoblastic leukaemia treated in Australia and New Zealand between 1st January 1992 to 31st December 2011.



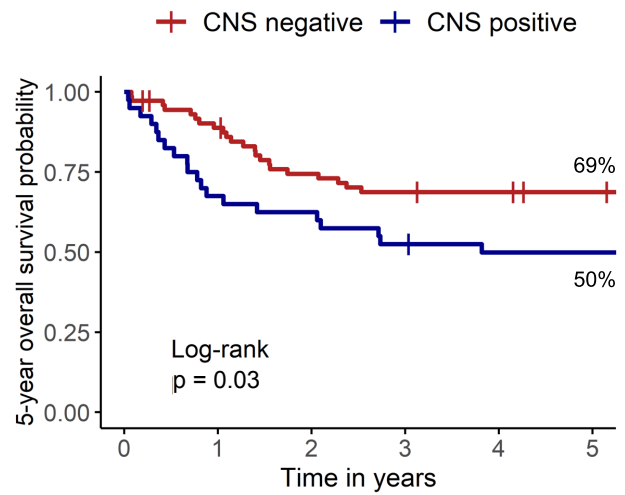
Supplementary Figure 2. Kaplan-Meier survival curves showing event-free (left panel) and overall survival (right panel) of infants with acute lymphoblastic leukaemia treated in Australia and New Zealand between 1st January 1992 to 31st December 2011 stratified by (A) *KMT2A* status (B) Sex (C) Age (D) CNS status (E) White Blood Cell count and (F) CD10 status at diagnosis.





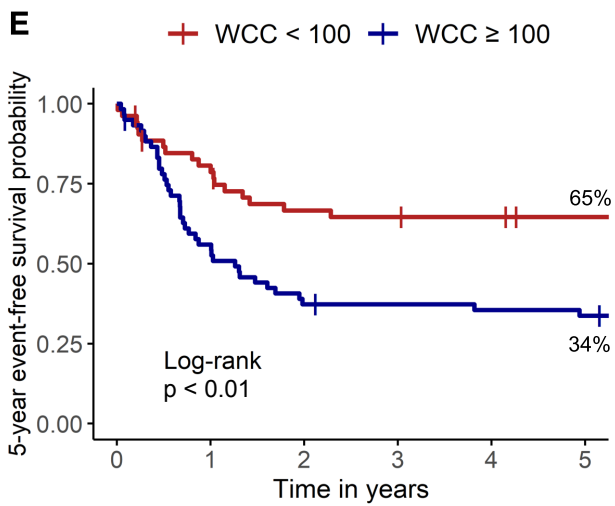
Number at risk

73	55	43	40	40	37
40	21	13	13	11	11



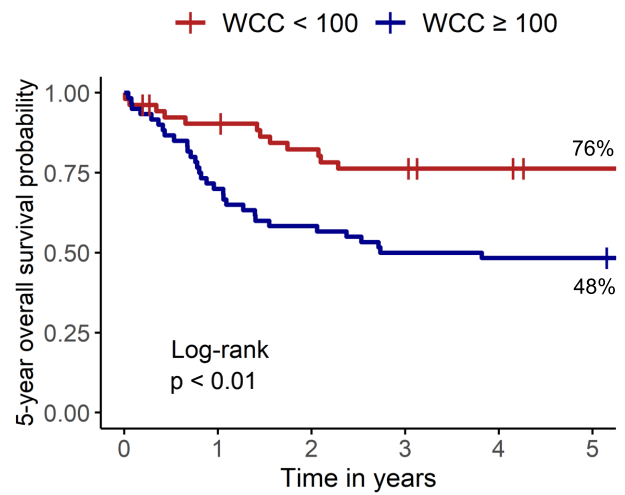
Number at risk

73	63	52	48	47	45
40	27	25	21	19	19



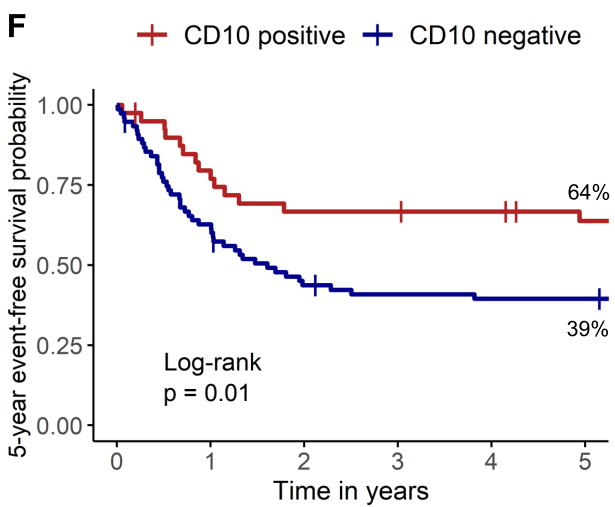
Number at risk

53	41	33	32	31	29
60	33	22	21	20	19



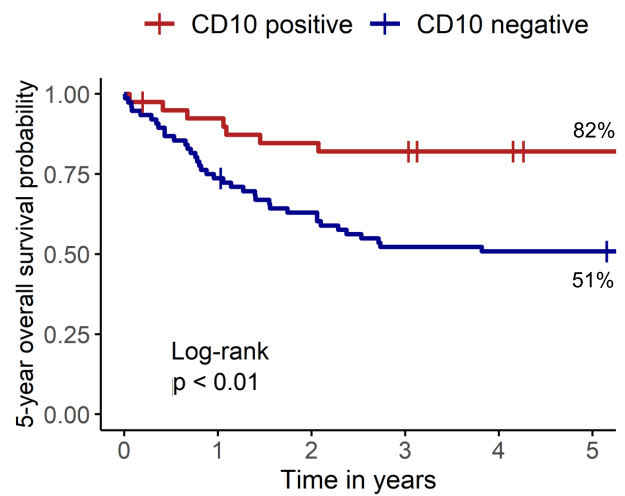
Number at risk

53	46	41	38	36	34
60	42	35	30	29	29



Number at risk

40	31	26	26	25	22
76	47	32	29	28	28



Number at risk

40	36	33	32	30	28
76	56	47	39	38	38