

Table S1: Missing Covariates and Outcomes

Missing Covariate/Outcome	% Missing Data
Covariates	
Recipient BMI	0.2%
Recipient estimated glomerular filtration rate at transplant	0.5%
Ischemic time	1.4%
Recipient dialysis prior to transplant	0.9%
Recipient cerebrovascular disease	0.8%
Recipient malignancy	0.2%
Donor inotropic support at procurement	0.3%
In-Hospital Outcomes	
Stroke	1.4%
Dialysis	1.1%
Permanent pacemaker implant	0.8%

Figure S1: Unadjusted 5-Year Survival Conditional on 30-Day Survival Following Heart Retransplantation

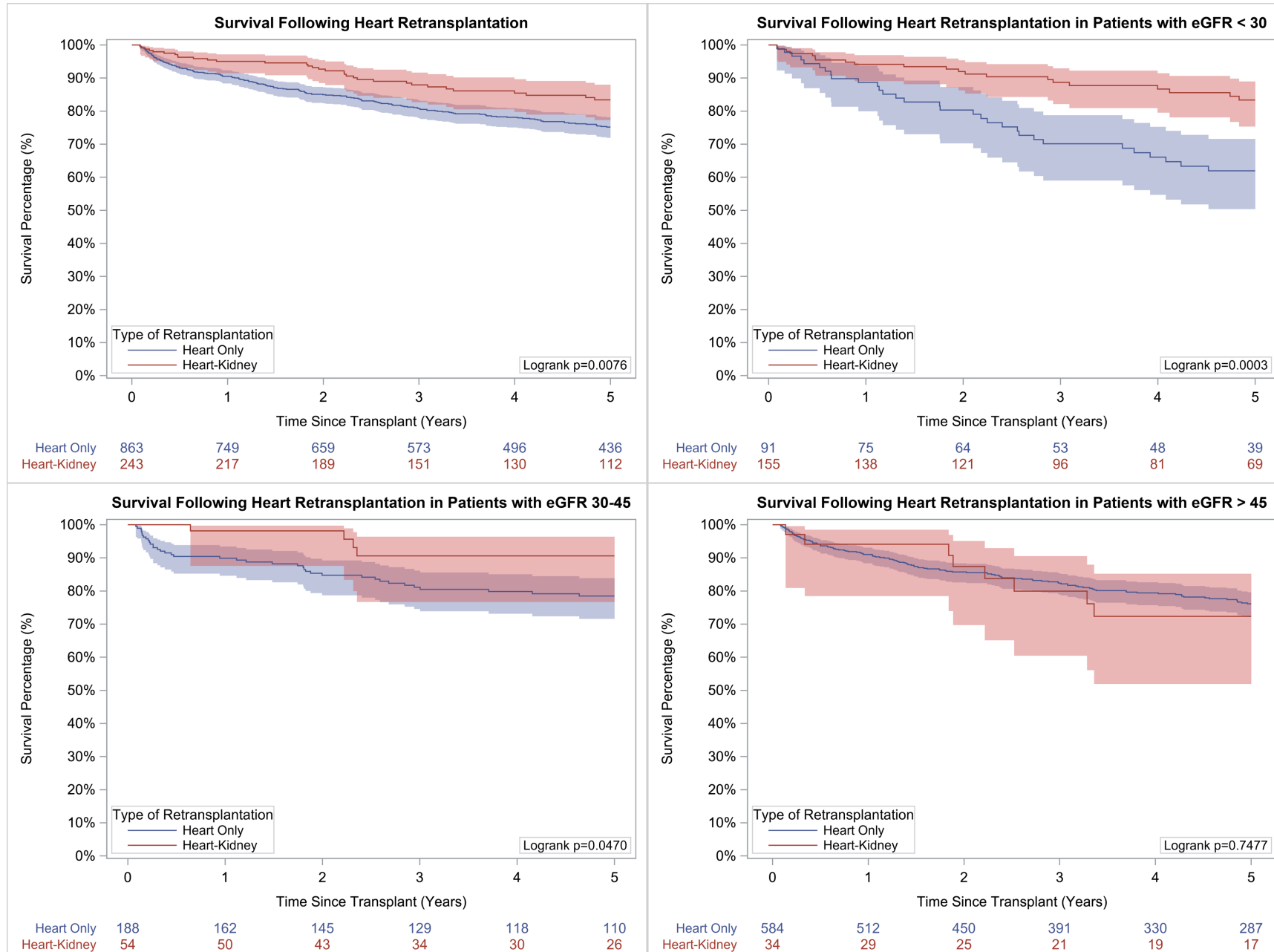


Figure S2: Unadjusted 10-Year Survival Following Heart Retransplantation

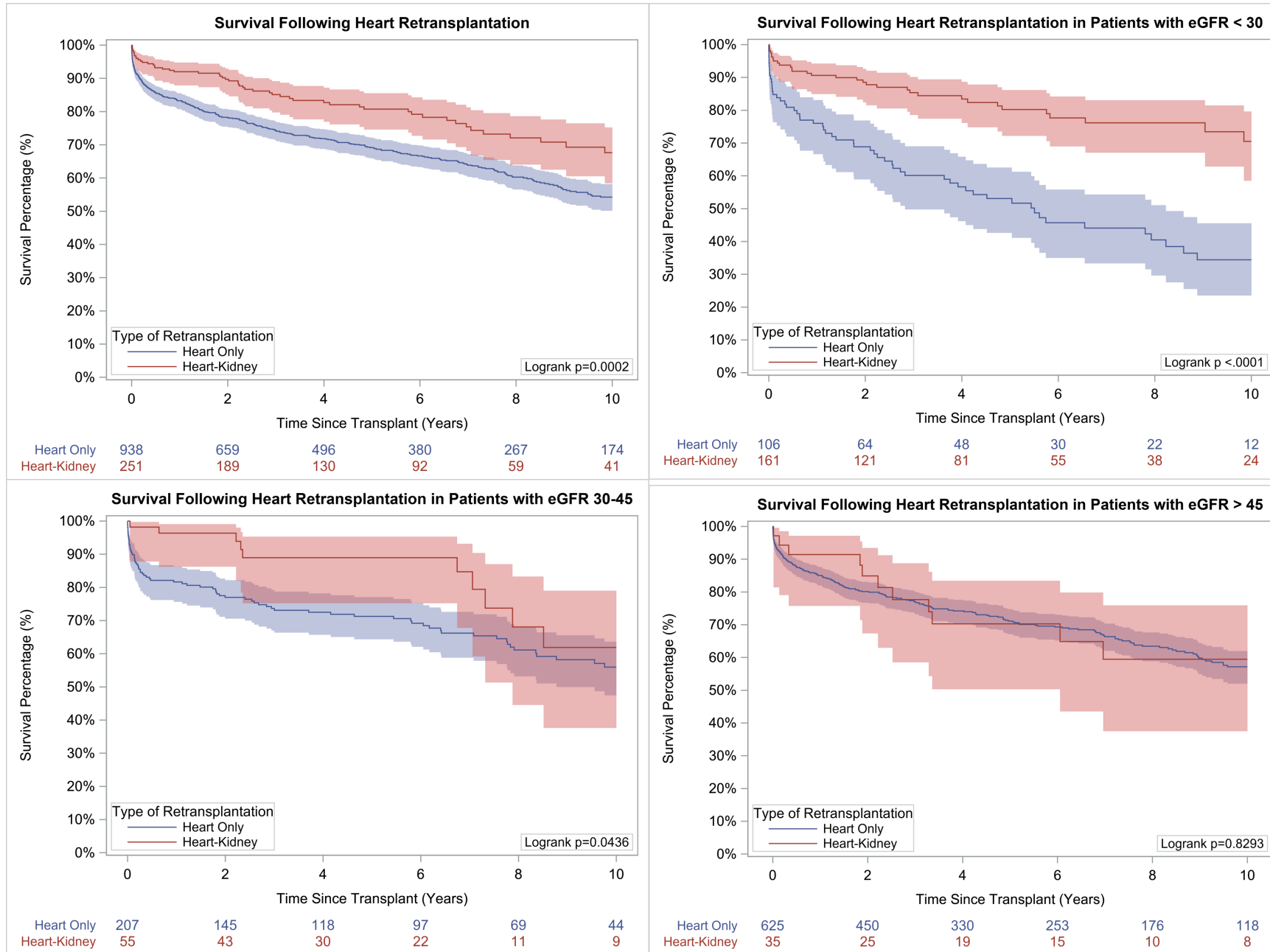
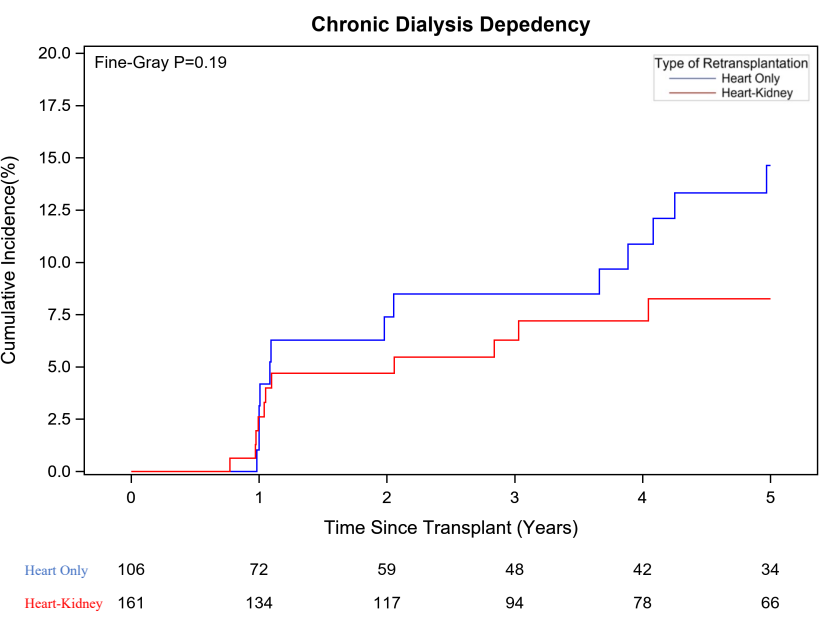
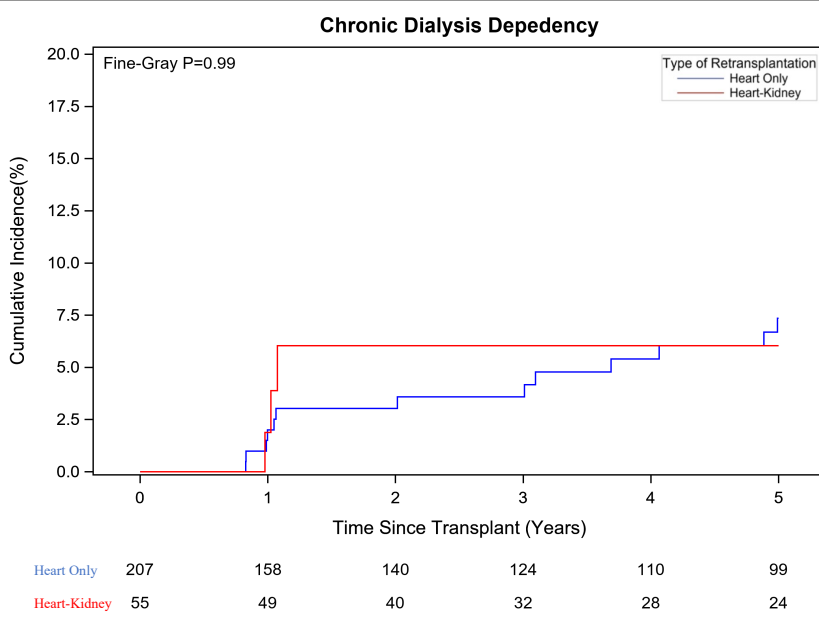


Figure S3: Cumulative Incidence of Chronic Dialysis Dependency in Heart Transplant Recipients with
 A. eGFR < 30mL/min/1.73m², B. eGFR 30 – 45mL/min/1.73m², C. eGFR > 45mL/min/1.73m²

A.



B.



C.

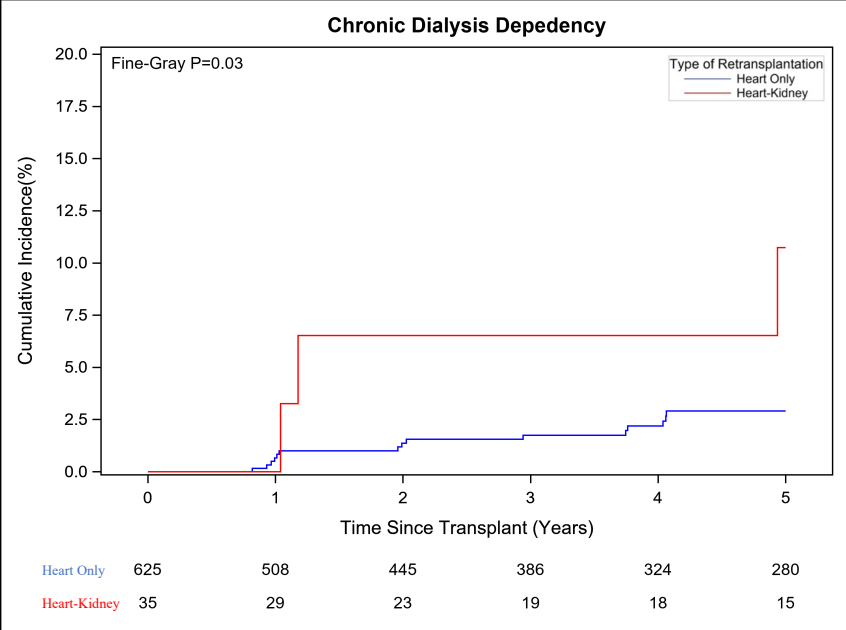
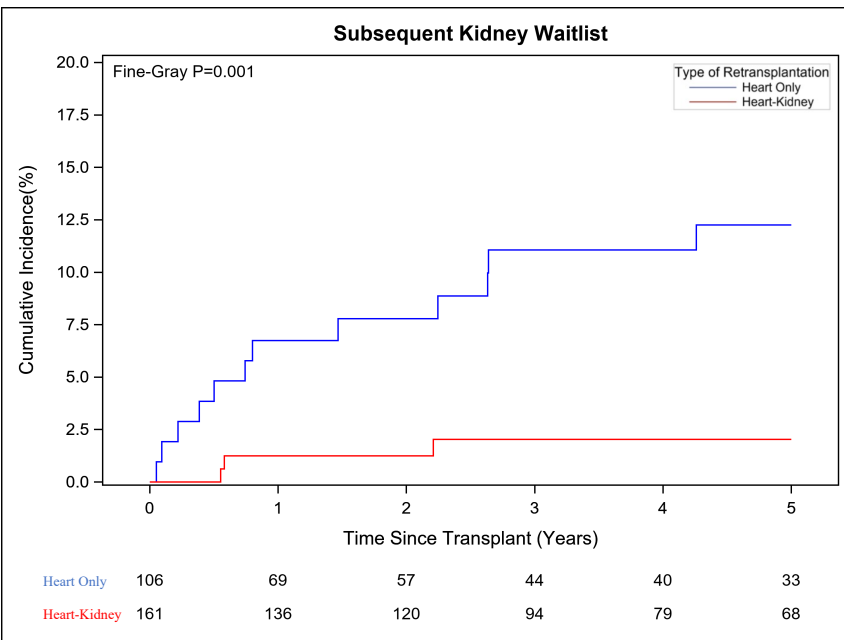
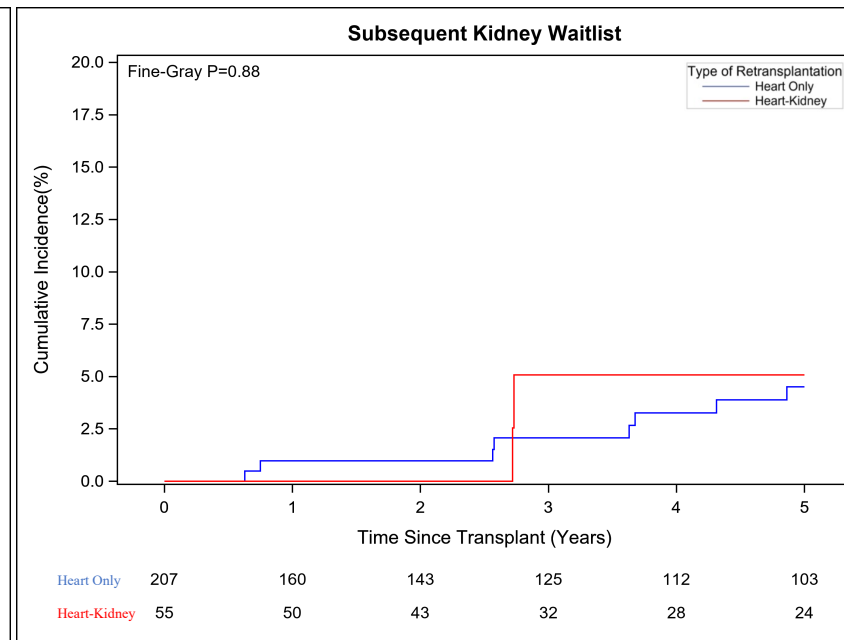


Figure S4: Cumulative Incidence of Subsequent Kidney Waitlist in Heart Retransplant Recipients with
 A. eGFR < 30mL/min/1.73m², B. eGFR 30 – 45mL/min/1.73m², C. eGFR > 45mL/min/1.73m²

A.



B.



C.

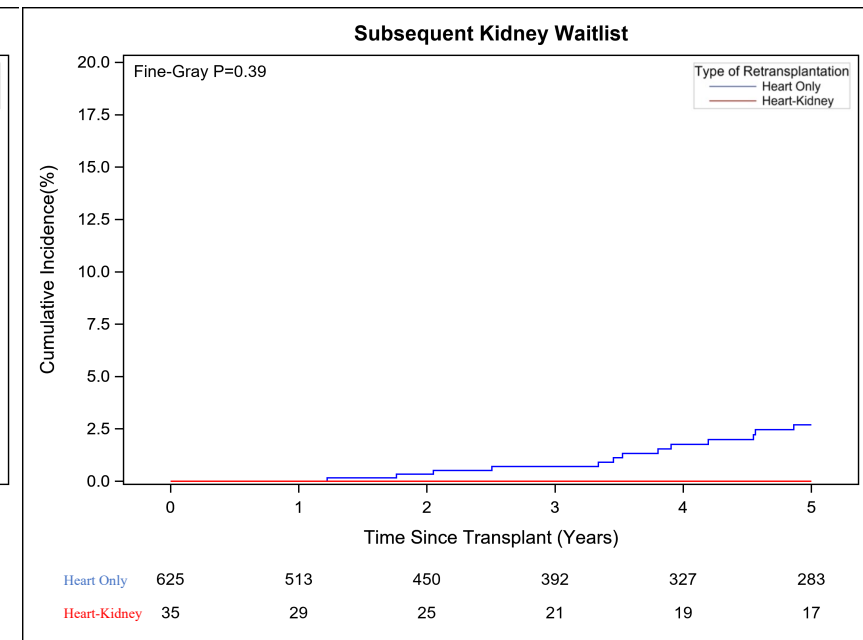
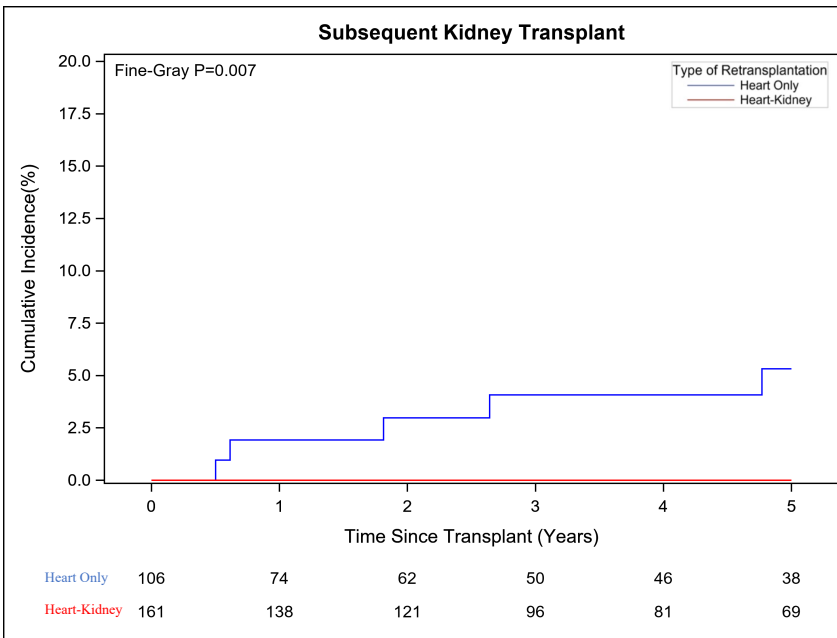
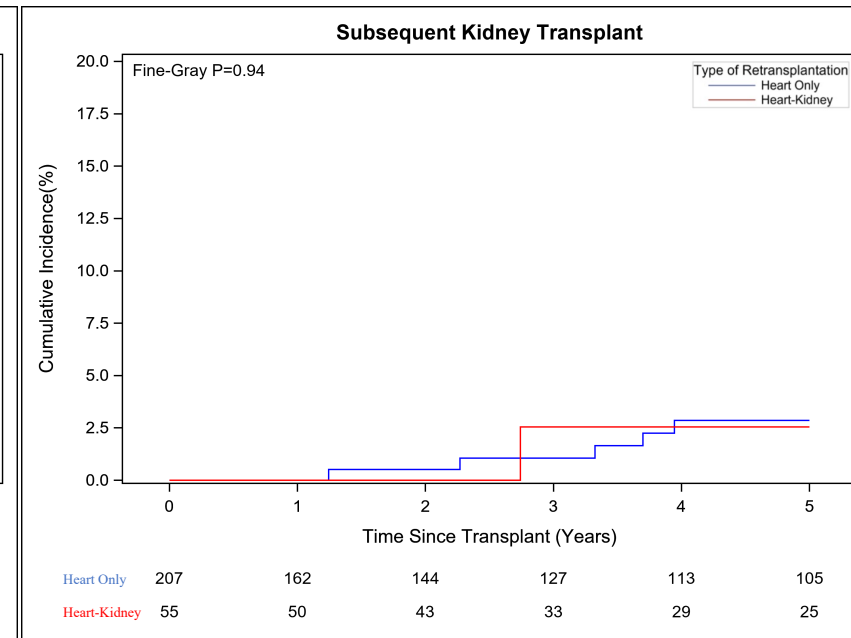


Figure S5: Cumulative Incidence of Subsequent Kidney Transplant in Heart Retransplant Recipients with
 A. eGFR < 30mL/min/1.73m², B. eGFR 30 – 45mL/min/1.73m², C. eGFR > 45mL/min/1.73m²

A.



B.



C.

