

The Histone Methyltransferase Setdb2 Modulates TIMP-MMP Activity During Abdominal Aortic Aneurysm Development

Authors

Frank M. Davis, M.D.¹; William J. Melvin, M.D.¹; Kevin Mangum, M.D.¹; Lam C. Tsoi, Ph.D.^{2,3,4}; Rachael Wasikowski, MS²; Amrita D. Joshi¹, Ph.D.¹; Qing Cai, MS¹; Peter K. Henke, M.D.¹; Johann E. Gudjonsson, M.D., Ph.D.²; Katherine A. Gallagher, M.D.^{1,5}

Affiliations

¹Section of Vascular Surgery, Department of Surgery, University of Michigan, Ann Arbor, MI

²Department of Dermatology, University of Michigan, Ann Arbor, MI

³Department of Computation Medicine and Bioinformatics, University of Michigan, Ann Arbor, MI

⁴Department of Biostatistics, University of Michigan, Ann Arbor, MI

⁵Department of Pathology, University of Michigan, Ann Arbor, MI

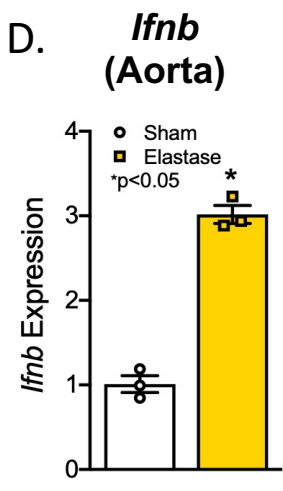
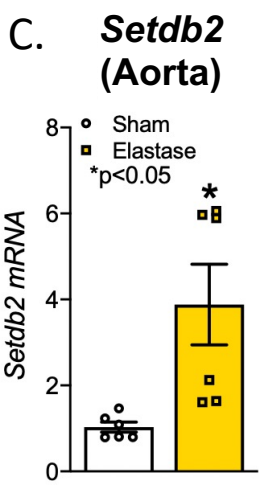
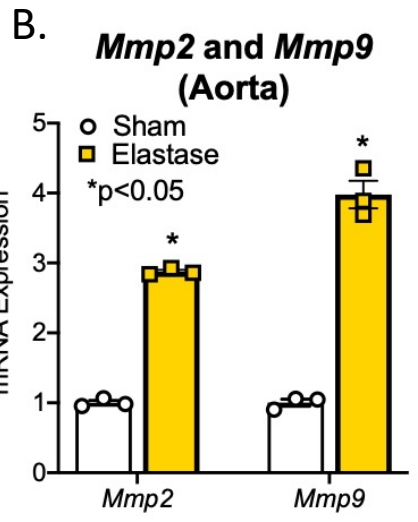
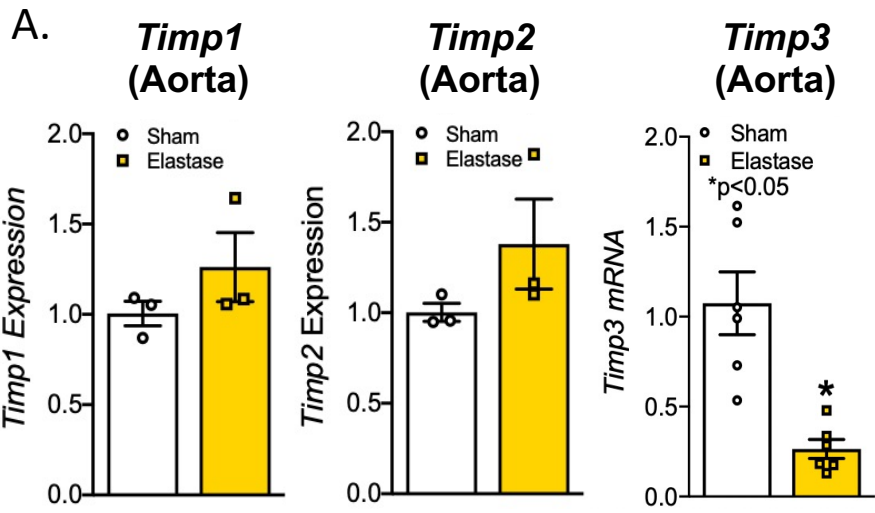
⁶Department Microbiology and Immunology, University of Michigan, Ann Arbor, MI

Supplemental Materials

-Online Figures 1-3

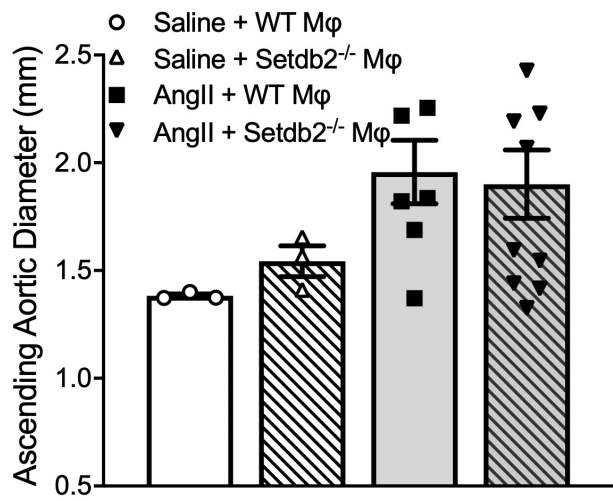
-Online Tables I-III

Supplemental Figure 1

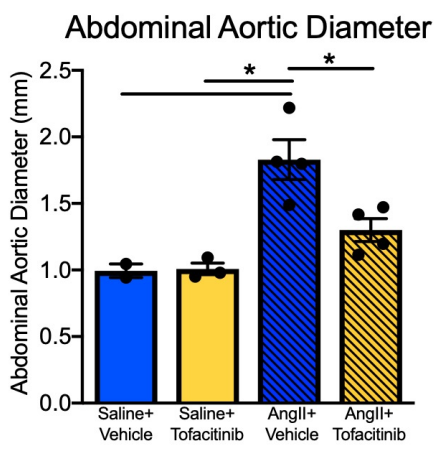
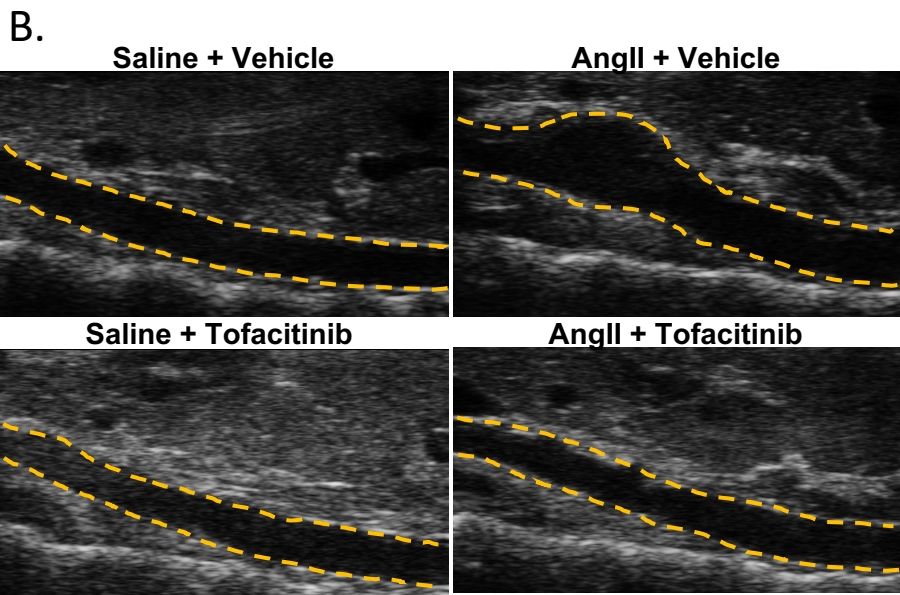
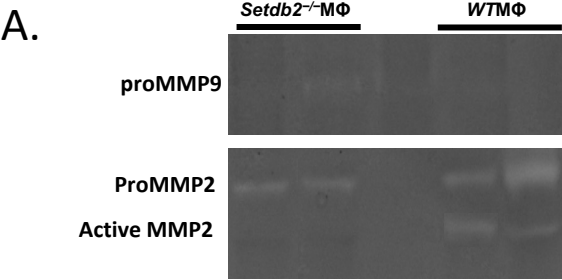


Supplemental Figure 2

A. Ascending Aortic Diameter



Supplemental Figure 3



Supplemental Table I Primer Sequences

Gene	Forward Primer	Reverse Primer
<i>Timp1</i>	5' TCCCTTATTCACCAACTGCC 3'	5' AGGGAGATTTGGGACCTCTT 3'
<i>Timp2</i>	5' ATCCTCGGAGCGCAATAAAA 3'	5' TGCCTTCTATGGCTGTGTTT 3'
<i>Timp3</i>	5' TCATACTAGCACAATCGCCC 3'	5' GGTAATTGCCATTGGGGGTA 3'

Supplemental Table II Human AAA and Atherosclerotic Tissue Cohort

Demographic	Control (n=3)	AAA (n=19)
Gender (% male)	2 (66.7)	15 (78.9)
Age (SD)	67.7 (7.5)	66.4 (7.3)
BMI (SD)	29.0 (6.3)	27.1 (4.9)
Aortic Diameter (SD, mm)	---	53.7 (12.8)
Tobacco abuse (prior/current)	2 (66.7)	17 (88.8)
Hypertension	2 (66.7)	17 (77.7)
Hyperlipidemia	2 (66.7)	12 (63.2)
Coronary artery disease	2 (66.7)	6 (31.5)
Diabetes	0 (0)	1 (5.2)
COPD	2 (66.7)	4 (21.0)
Renal Failure	0 (0)	1 (5.2)

BMI, body mass index; COPD, chronic obstructive pulmonary disease; SD, standard deviation

Continuous variable are summarized by mean (standard deviation) and categorical variables are summarized by N (%).

Supplemental Table III Human AAA and Atherosclerotic Single Cell RNA-Sequencing Cohort

Demographic	Control (n=2)	AAA (n=4)
Gender (% male)	2 (100)	2 (50)
Age (SD)	59.8 (2.1)	67.2 (15.5)
BMI (SD)	33.7 (4.0)	33.7 (6.0)
Aortic Diameter (SD, mm)	---	59.7 (3.3)
Tobacco abuse (prior/current)	2 (100)	2 (50.0)
Hypertension	2 (100)	2 (50.0)
Hyperlipidemia	2 (100)	2 (50.0)
Coronary artery disease	0 (0)	0 (0)
Diabetes	0 (0)	0 (0)
COPD	0 (0)	1 (25.0)
Renal Failure	0 (0)	0 (0)

BMI, body mass index; COPD, chronic obstructive pulmonary disease; SD, standard deviation

Continuous variable are summarized by mean (standard deviation) and categorical variables are summarized by N (%).