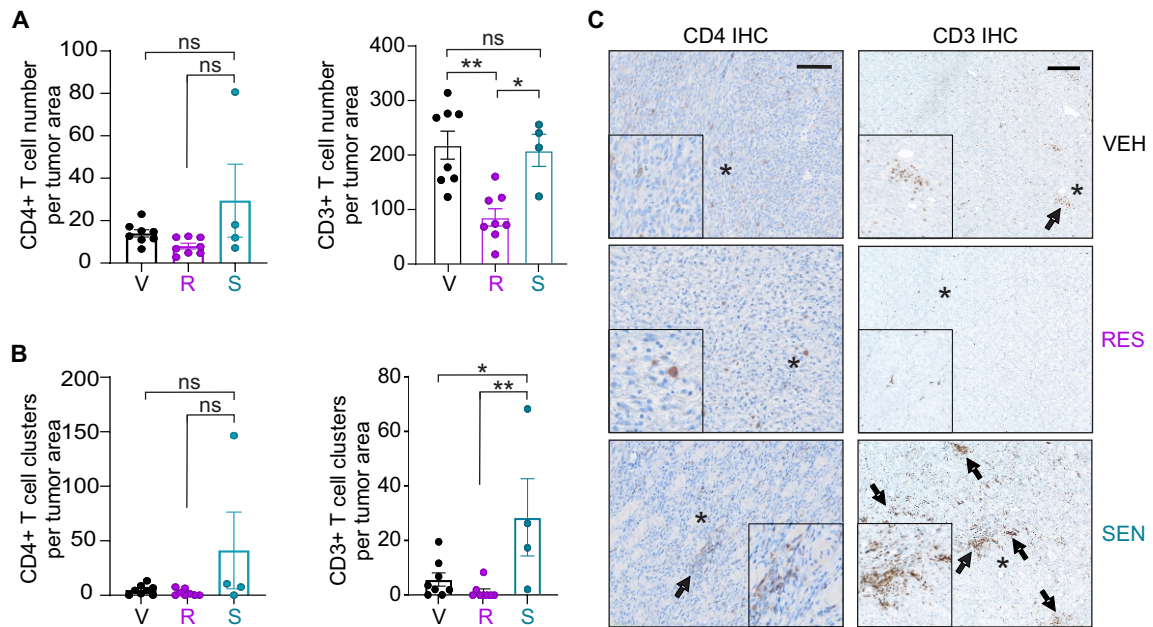


Supplementary Figure S6



Supplementary Figure S6. Analysis of helper (CD4) and pan (CD3) T cells in combination therapy-sensitive versus combination therapy-resistant MPNSTs. Immunohistochemical (IHC) staining for CD4 and CD3 was performed on vehicle (V, VEH), combination therapy-sensitive (S, SEN), or combination therapy-resistant (R, RES) MPNSTs. Combination therapy; daily treatment with palbociclib (100 mg/kg) and mirdametininib (1 mg/kg). **(A)** Total cell number of CD4+ (left) and CD3+ (right) T cells were quantified per mm² of tumor area. **(B)** Quantified number of CD4+ (left) and CD3+ clusters per mm² of tumor area. For both A and B, the entire tumor area was quantified. **(C)** Representative IHC images of CD4+ and CD3+ cells in the indicated tumors. Scale bar = 100 μ m. Arrows indicate clusters of >25 cells; asterisks indicate location of highlighted, zoomed-in regions. Error bars, SEM. *P* value, One-way ANOVA with Tukey's correction (*, *P* < 0.05; **, *P* < 0.01).