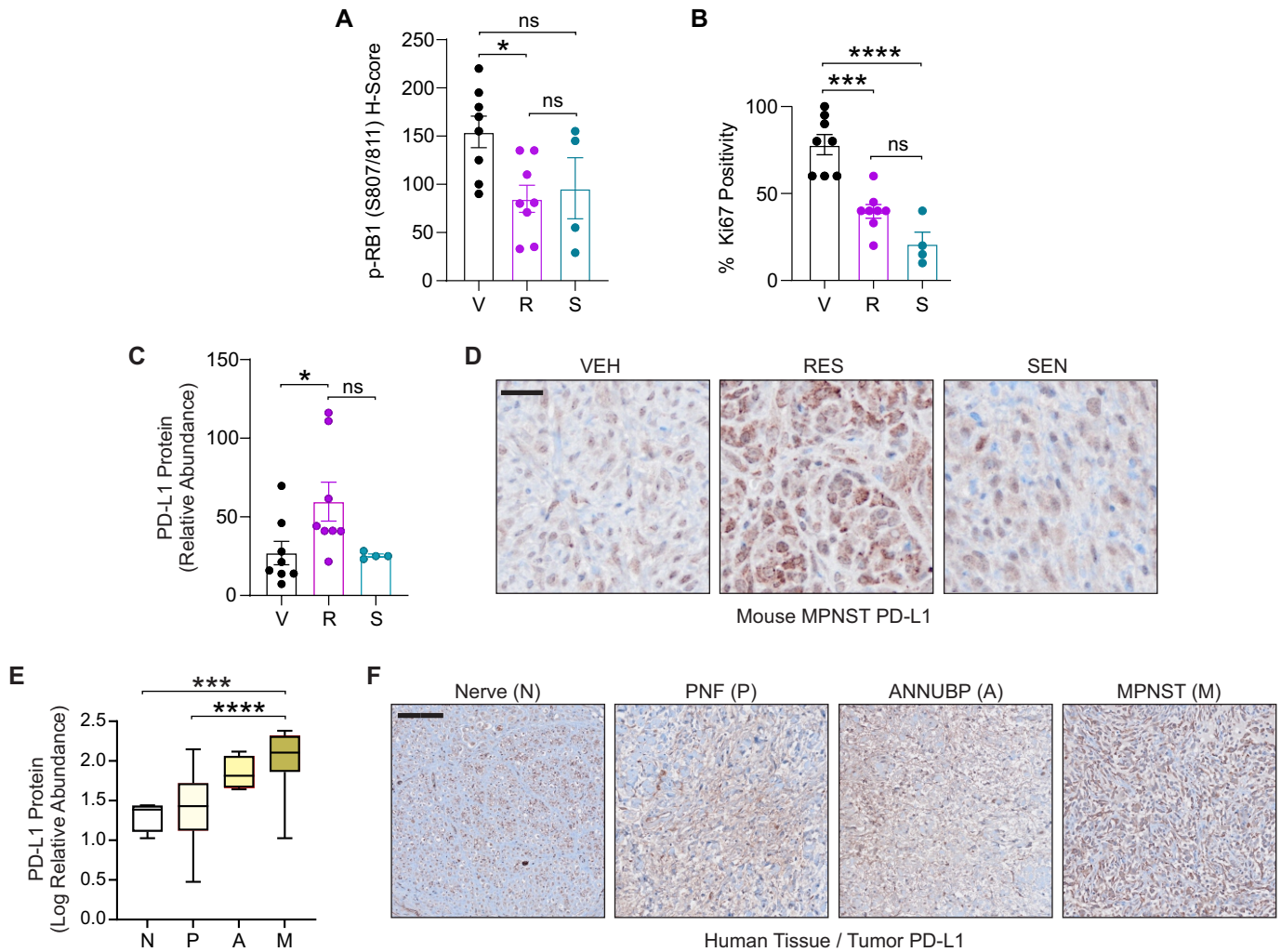


Supplementary Figure S7



Supplementary Figure S7. Analyses of p-RB1, Ki67, and PD-L1 in combination therapy-sensitive and -resistant MPNSTs and PD-L1 in NF1 patient tumors. Mouse MPNSTs from Figure 5 were examined by immunohistochemical (IHC) staining and quantification in panels A-C, whereas patient-matched PNFs, ANNUBPs, and MPNSTs were subjected to IHC and quantification of PD-L1 in panels E and F. **(A)** H-score quantification of p-RB1(S807/811), sites phosphorylated by CDK4/6. **(B)** Percent Ki67 positivity (% positive cells per total nuclei). **(C)** PD-L1 expression, as measured by pixel densitometry across entire samples using ImageJ analysis software. **(D)** Representative images from C. Scale bar = 25 μ m. **(E)** Relative PD-L1 expression in IHC stained, human normal nerve (N, n=4), PNF (P, n=41), ANNBP (A, n=4), and MPNST (M, n=71) samples, as measured by pixel densitometry across entire specimens. **(F)** Representative images from E. Scale bar = 100 μ m. Panels A,B,C,E: Error bars, SEM; *P* value, One-way ANOVA with Tukey's correction for multiple comparisons (ns, not significant; * *P* < 0.05, *** *P* < 0.001, **** *P* < 0.0001).