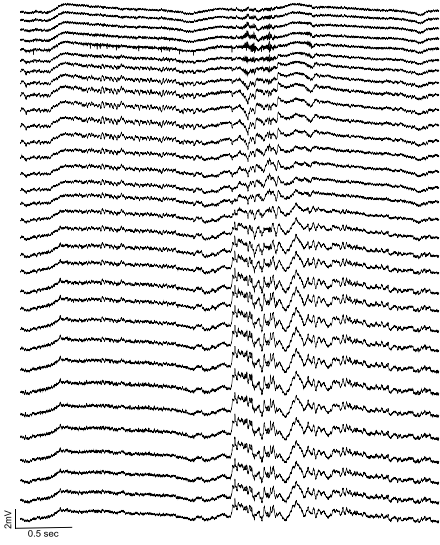


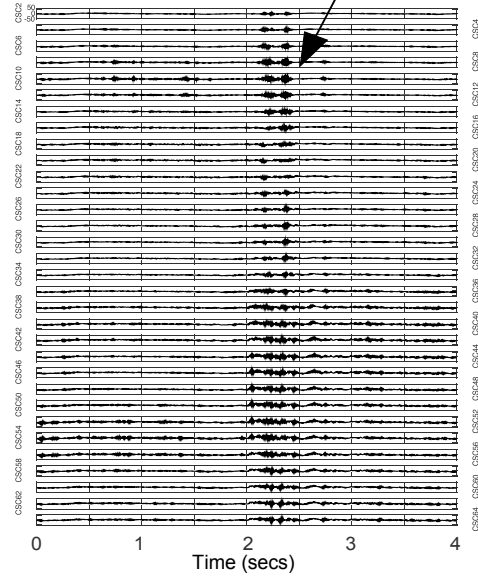
Supp. Fig. 1

Spontaneous SWR State

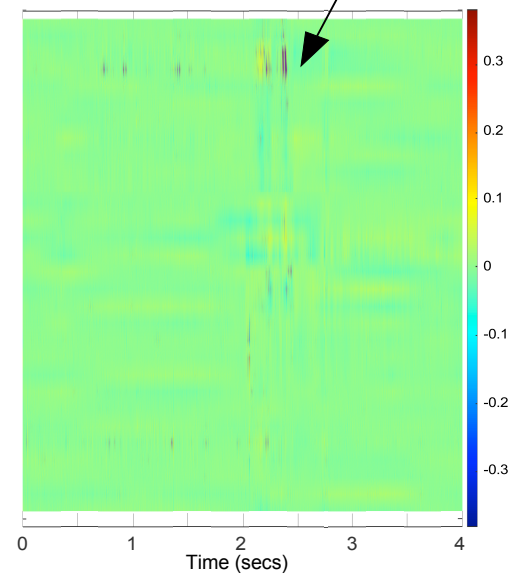
A) Filter 0-6000 Hz



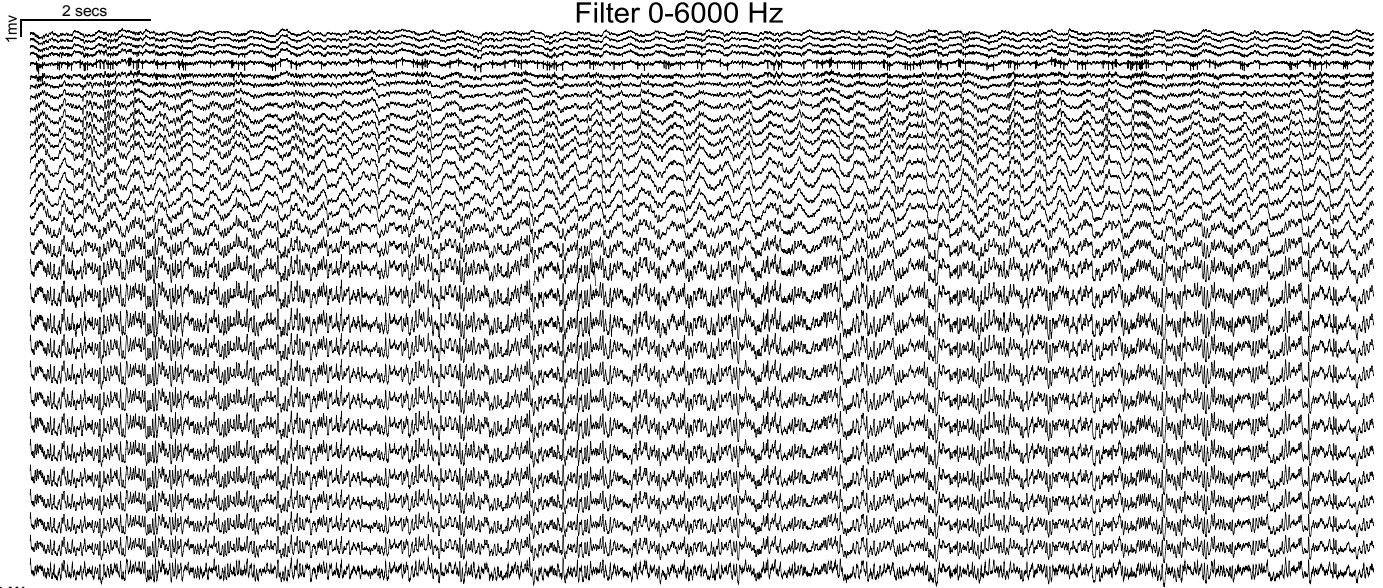
Bi) Filter 140-200 Hz



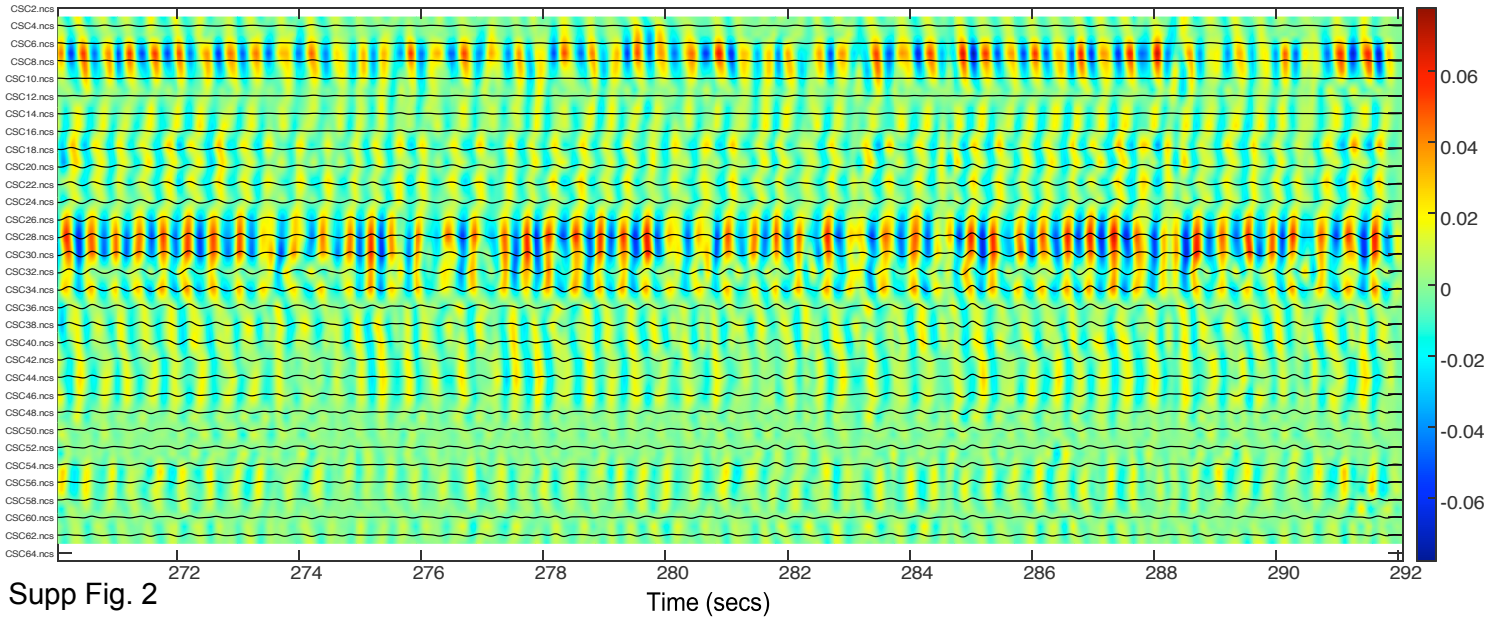
Bii) CSD 140-200 Hz

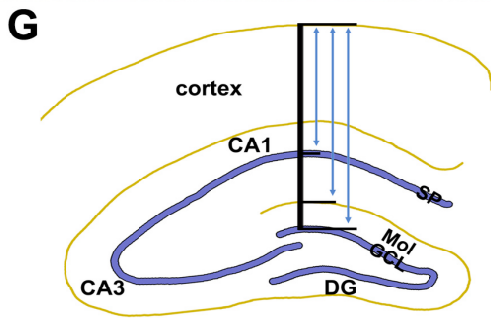
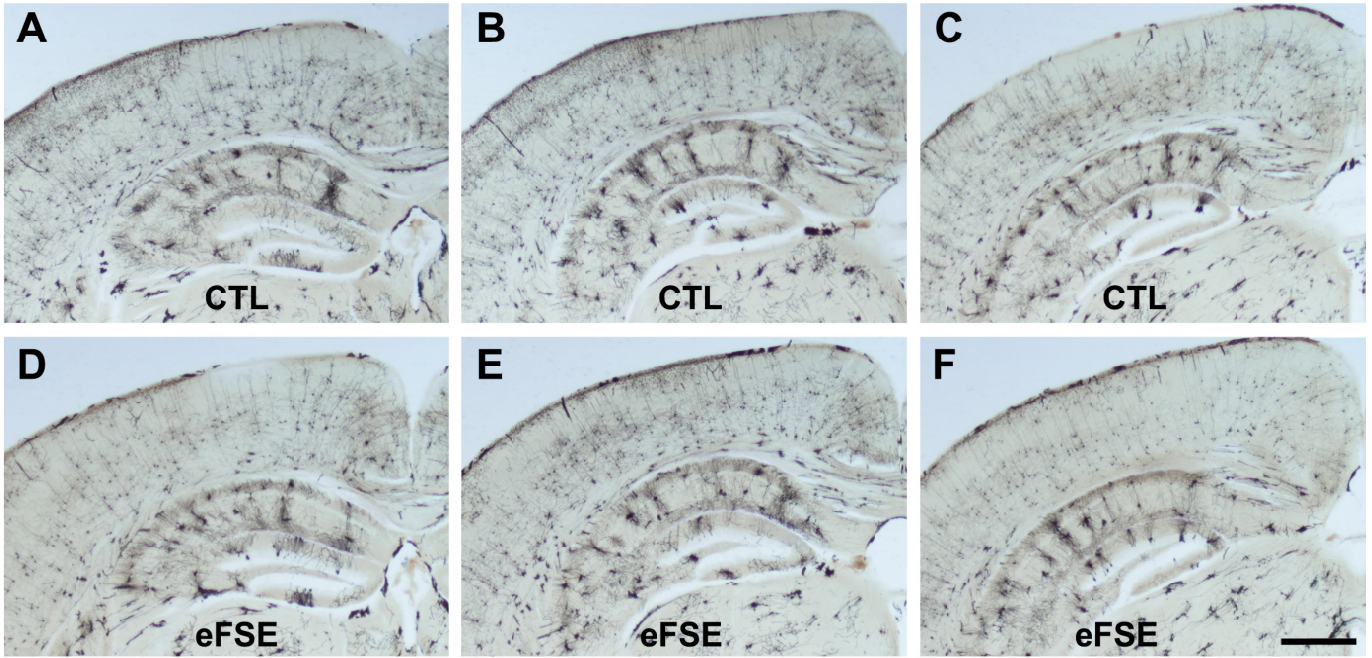


Ci) Post-Tail Pinch Theta State
Filter 0-6000 Hz

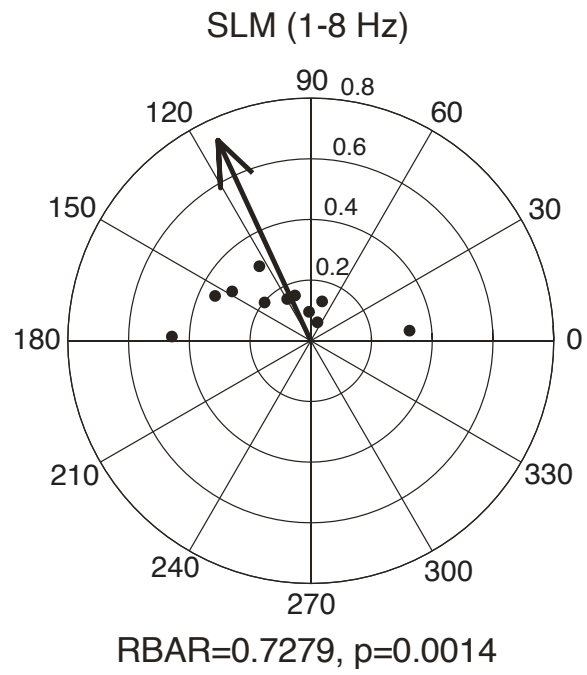
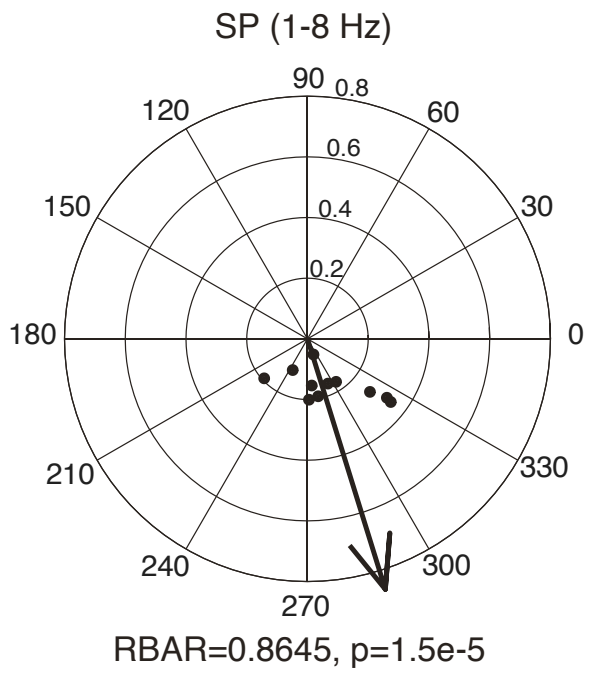


Cii) Filter 1-8 Hz





Supp. Fig. 3



Supp. Fig. 4

