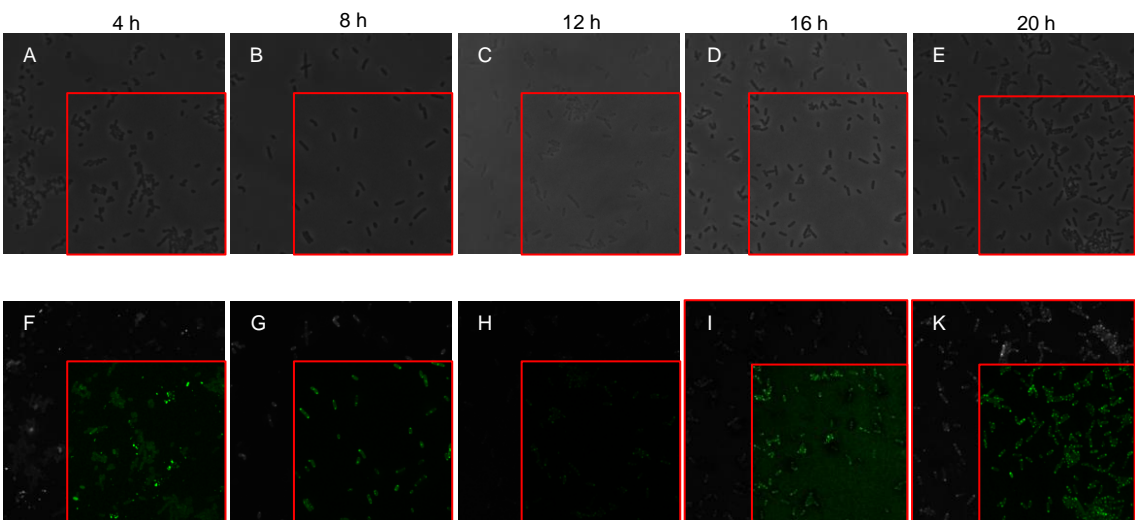


Full confocal microscopy images for FtsZ-G55 without (A,B) and with co-expression of PlpXY (C, D, E, F) in brightfield (A, C, E) and GFP channel (B, D, F). Cells were stained with CF488A® tetrazine **6** (A,B,C,D). Cropped images used in the main text are illustrated with the red rectangle.



Full confocal microscopy images for FtsZ-G55 with co-expression of PlpXY in brightfield (A, B, C, D, E) and GFP channel (F, G, H, I, K). Cells were stained with CF488A@ tetrazine **6**. Cropped images used in the main text are illustrated with the red rectangle.