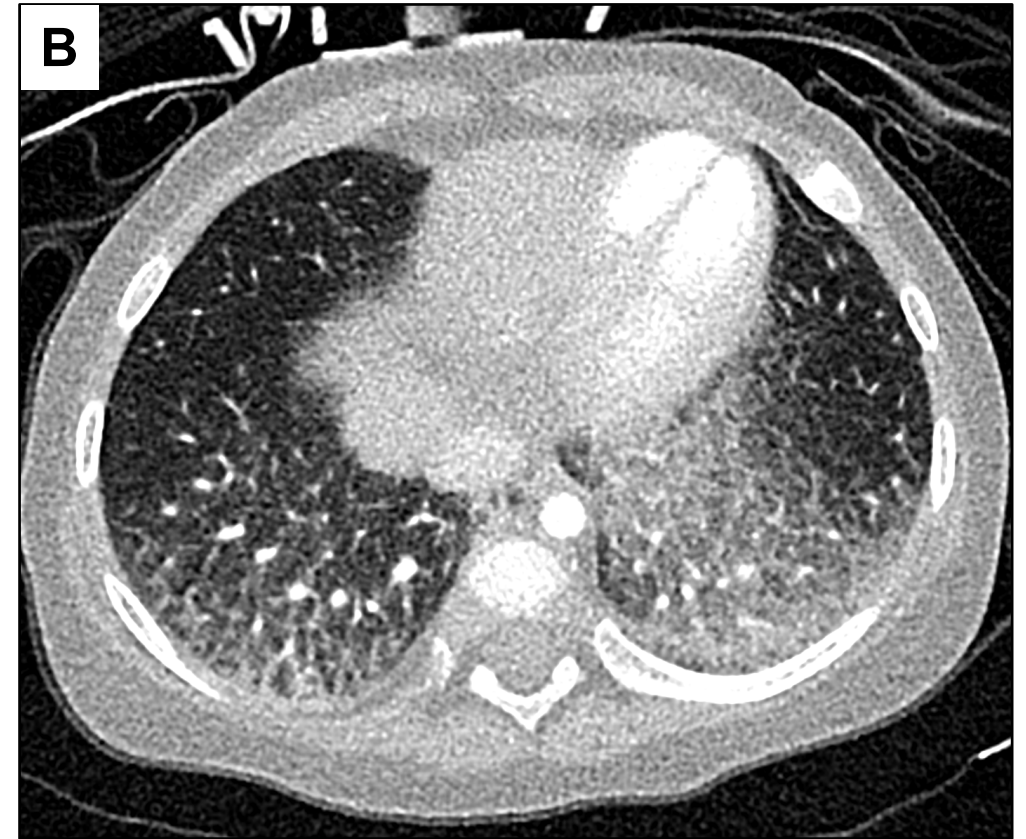


Supplementary Figure 1: Systemic Manifestation Score (SMS)

Clinical Manifestation	Points
Fever	
• 37 – 38 °C	1
• 38 – 39 °C	2
• 39 – 40 °C	3
• > 40 °C	4
Evanescient erythematous rash	1
Generalised lymphadenopathy	1
Hepatomegaly and / or splenomegaly	1
Serositis	1
Anaemia (Haemoglobin < 9 g/dL)	1
Platelet count > 600 x 10 ⁹ /L or Ferritin > 500 ng/mL	1

Supplementary Figure 2



High resolution CT (HRCT) thorax with contrast depicting pulmonary alveolar proteinosis in a 17-month-old child with systemic juvenile idiopathic arthritis and chronic (smouldering) macrophage activation syndrome. (A) Diffuse widespread ground glass opacities with superimposed smooth interlobular septal thickening giving a typical "crazy paving pattern" appearance, characteristically seen in pulmonary alveolar proteinosis. (B) Left lower lobe consolidation with smooth interlobular septal thickening in the bases.