

Figure S1. Identification of CSSCs. (A) Representative image of CSSCs by optical microscopy. (B-C) The immunofluorescent staining showed the CSSCs express CD90 and CD105. Positive adipogenic, chondrogenic and osteogenic staining are presented by presence of lipids, proteoglycans and calcium deposits (D-F).

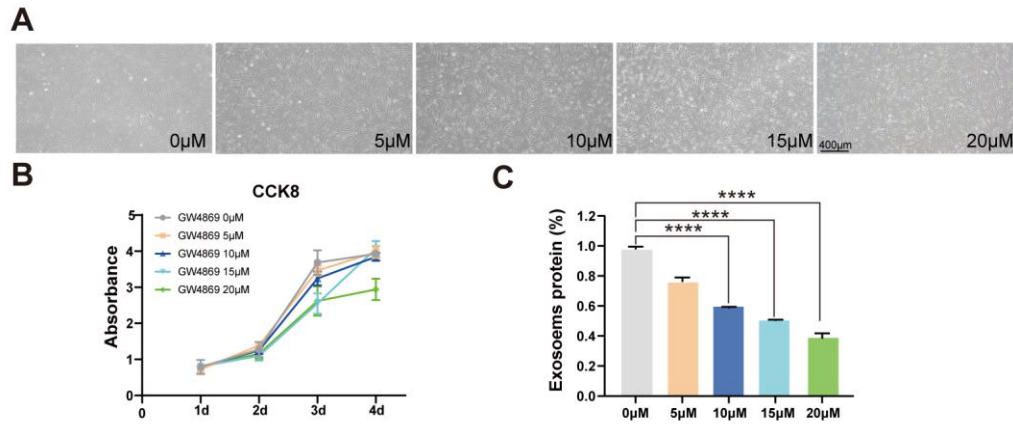


Figure S2. Attenuation of exosome secretion of CSSCs by GW4869. (A) The cell morphology of CSSCs under different concentrations of GW4869. (B) The proliferation of CSSCs was significantly inhibited by GW 4869 when the concentration reached 15 μ M. (C) Exosomal protein secretion decreases by about 40% at 10 μ M.

Figure 2C

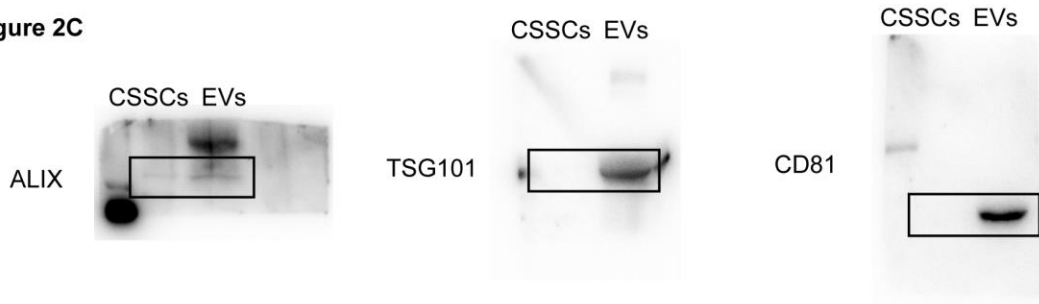


Figure 5C



Figure 6D

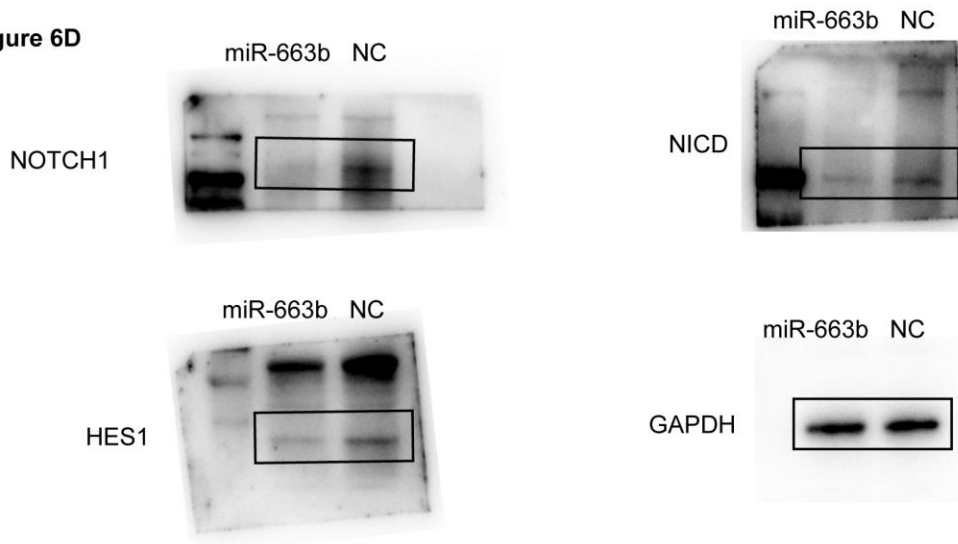


Figure S3. Unprocessed scan of Western blotting.