

Figure S1

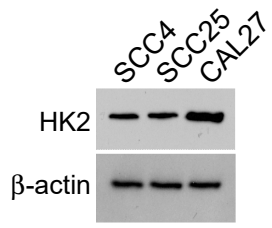
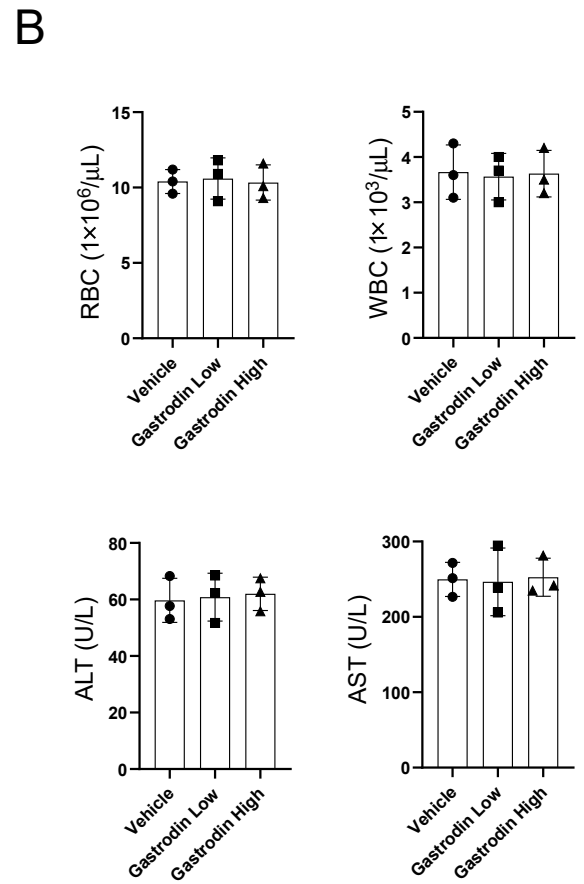
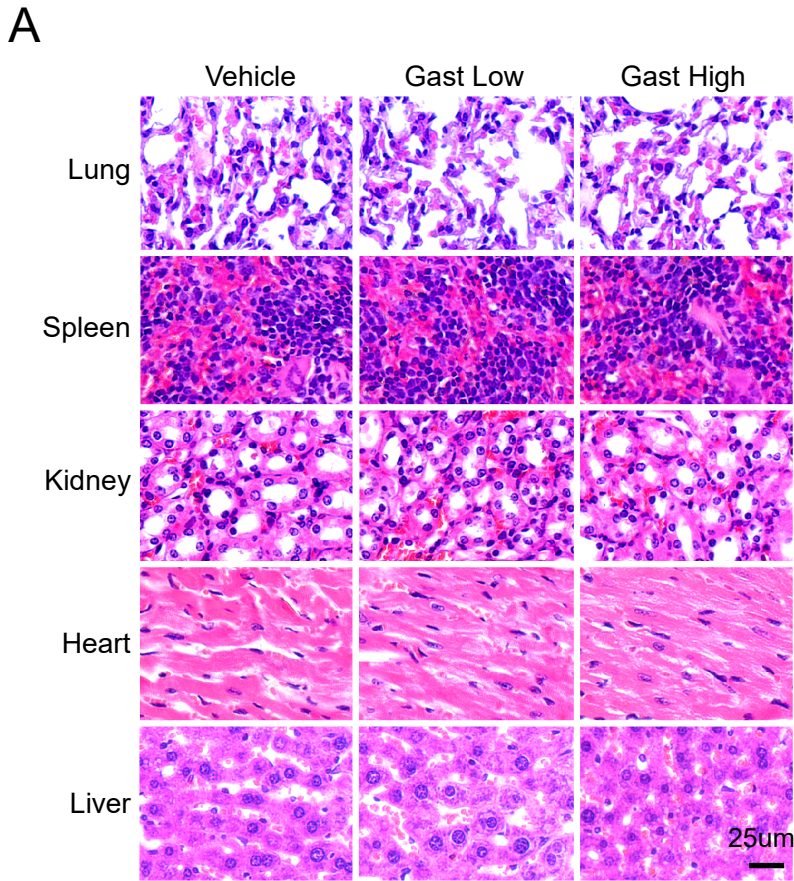


Figure S2



Supplementary Figure 1: SCC4, SCC25, and CAL27 cells were subjected to IB assay to detect HK2 expression.

Supplementary Figure 2: (A) Hematoxylin-eosin staining analysis of organs of CAL27-CR tumor-bearing mice following various doses of gastrodin or vehicle treatment. (B) Mouse blood analysis after various doses of gastrodin or vehicle treatment. RBC, WBC, ALT, and AST levels were analyzed.