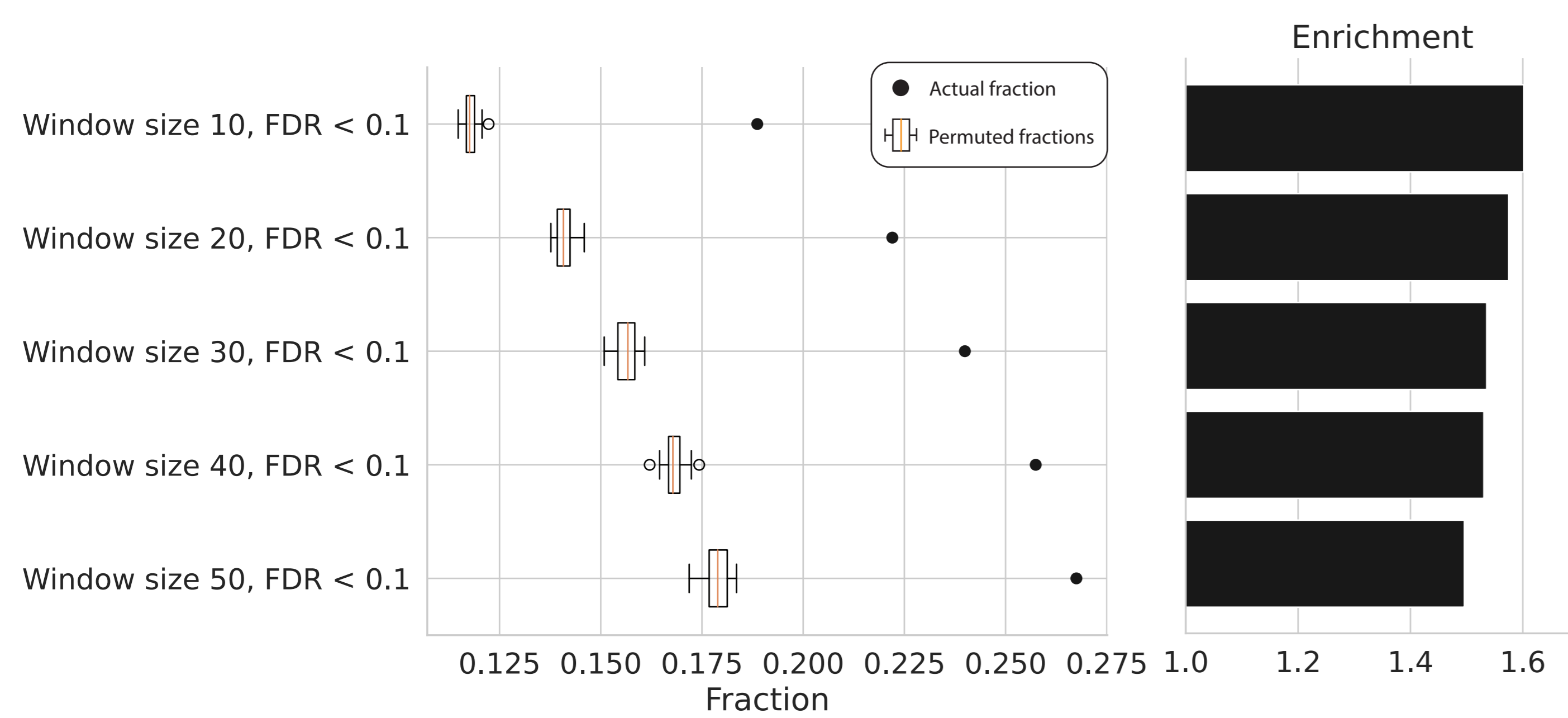


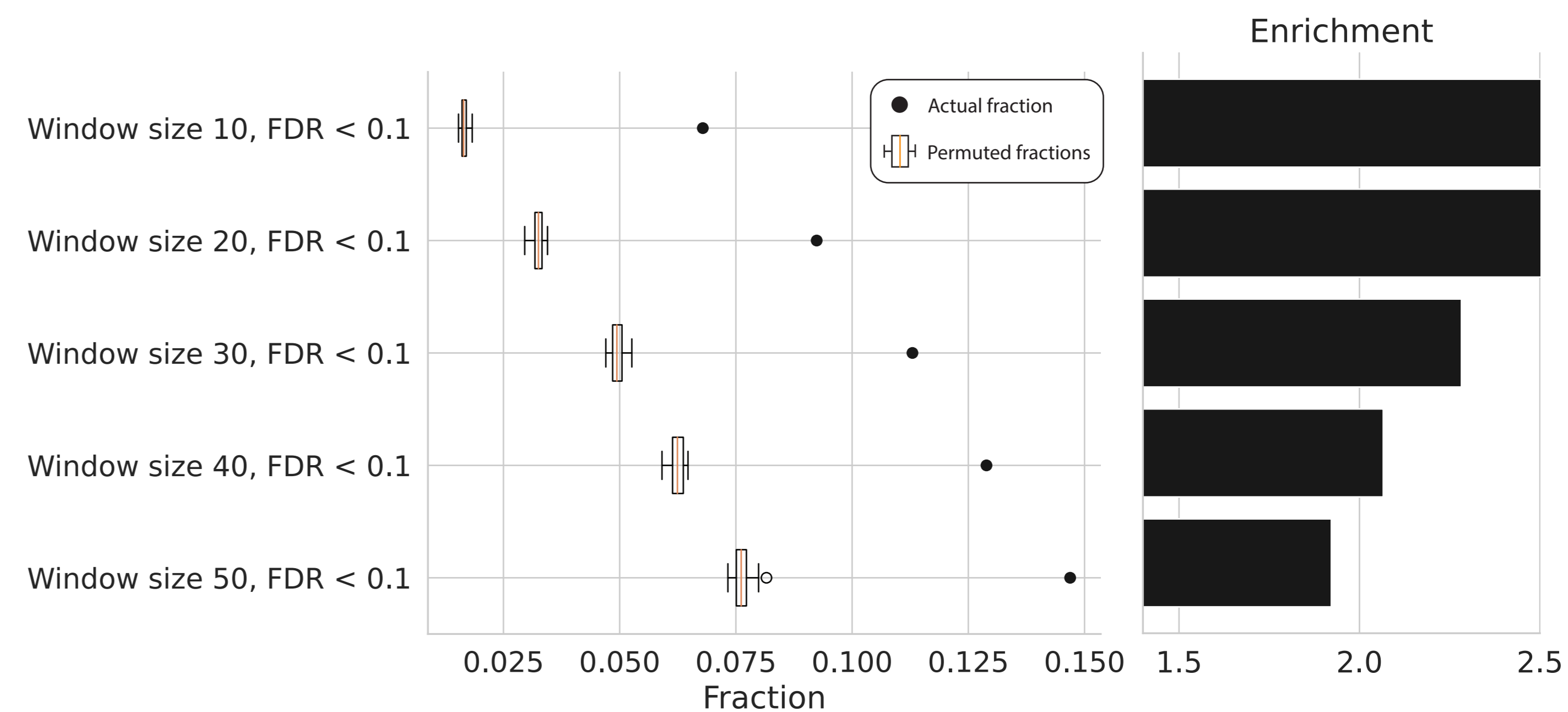
A

Actual vs permuted fraction of STAMP peaks overlapped by eCLIP



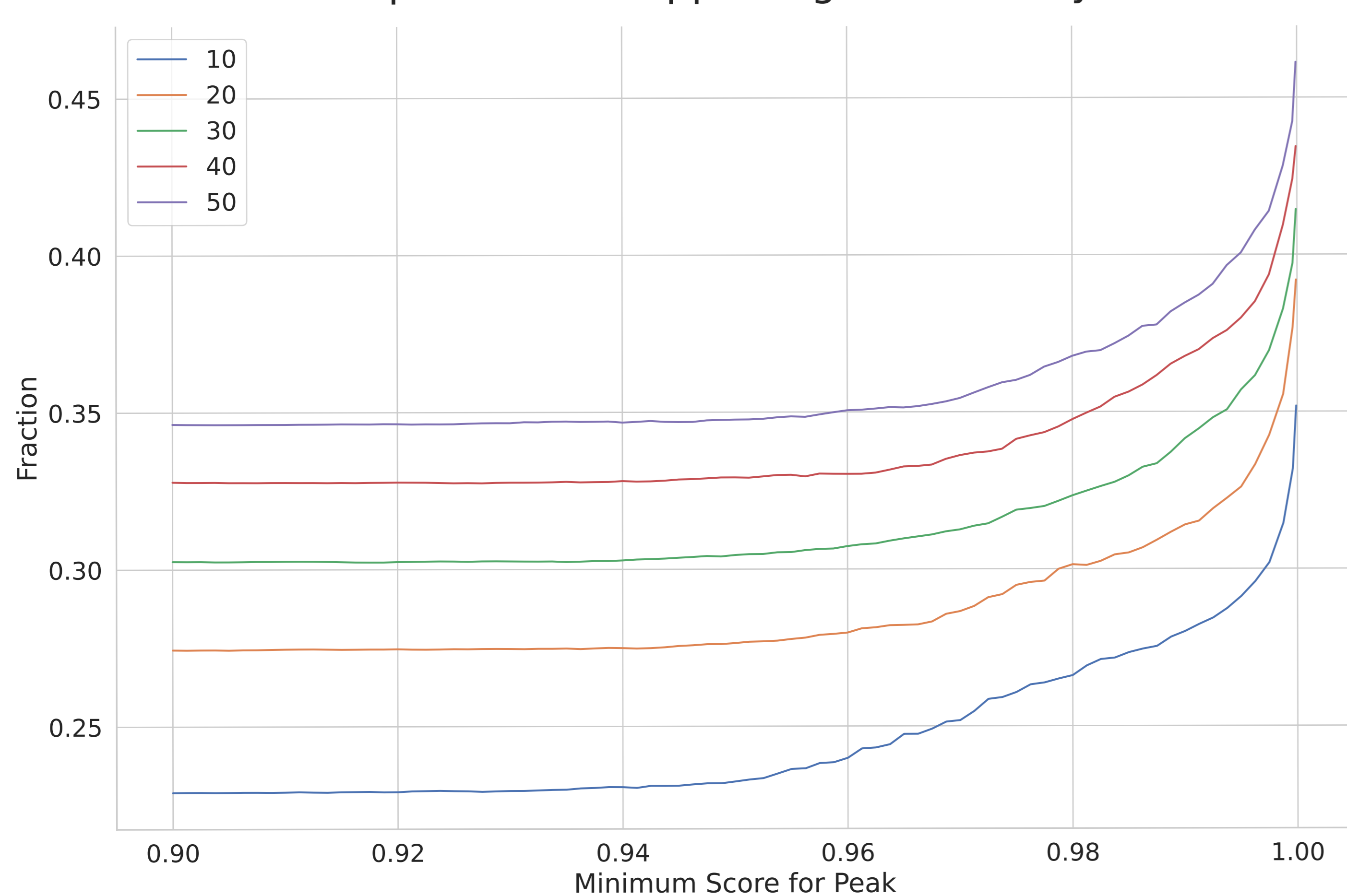
B

Actual vs permuted fraction of STAMP peaks with GCATG motif



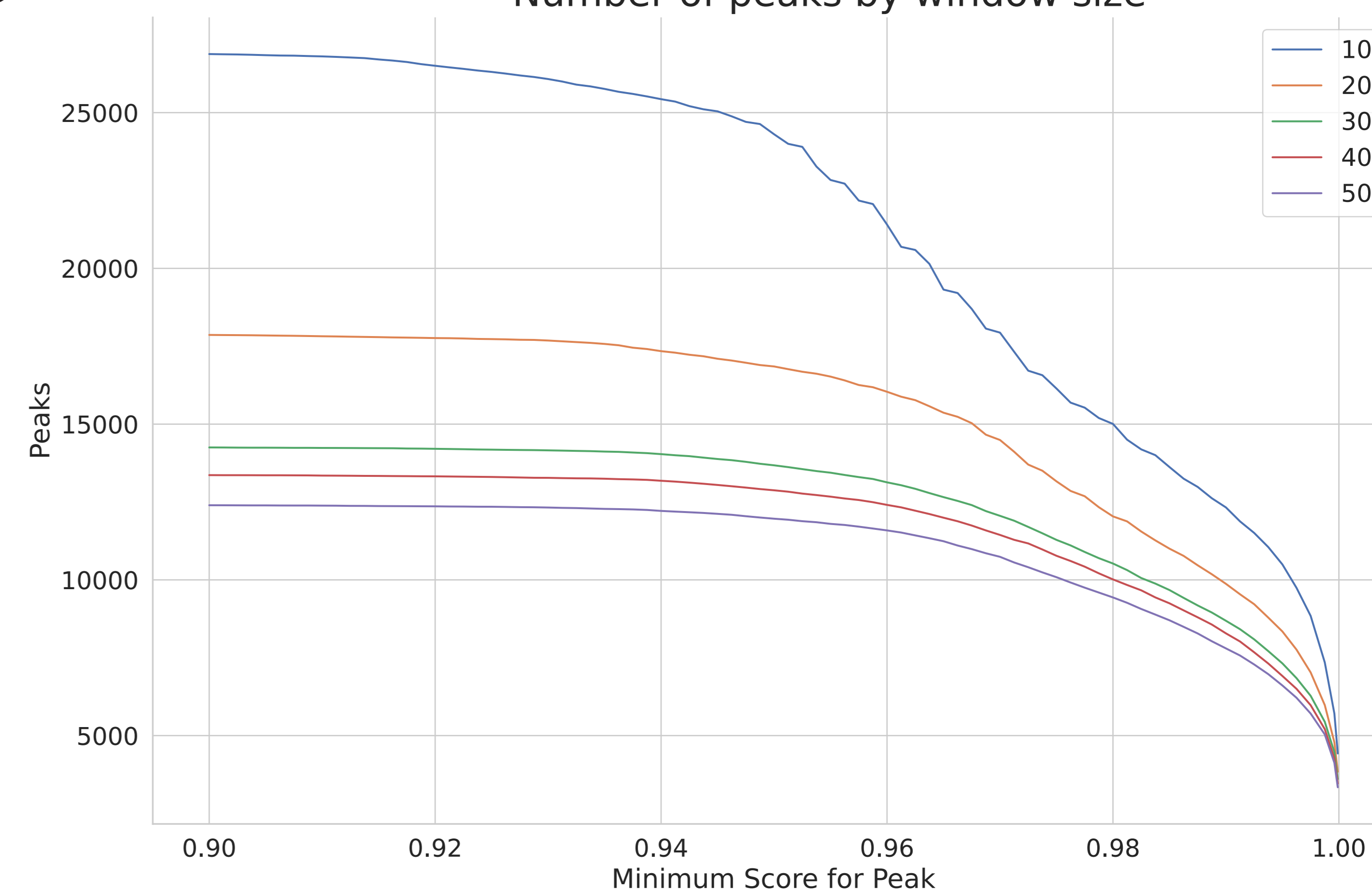
C

Fraction of final peaks with supporting evidence by window size



D

Number of peaks by window size



E

$$\text{Efficiency score (window size)} = \frac{\text{sites per cluster} \times \text{window size}}{\text{total area covered by clusters} \times \text{window size}}$$

Clustering efficiency by window size

