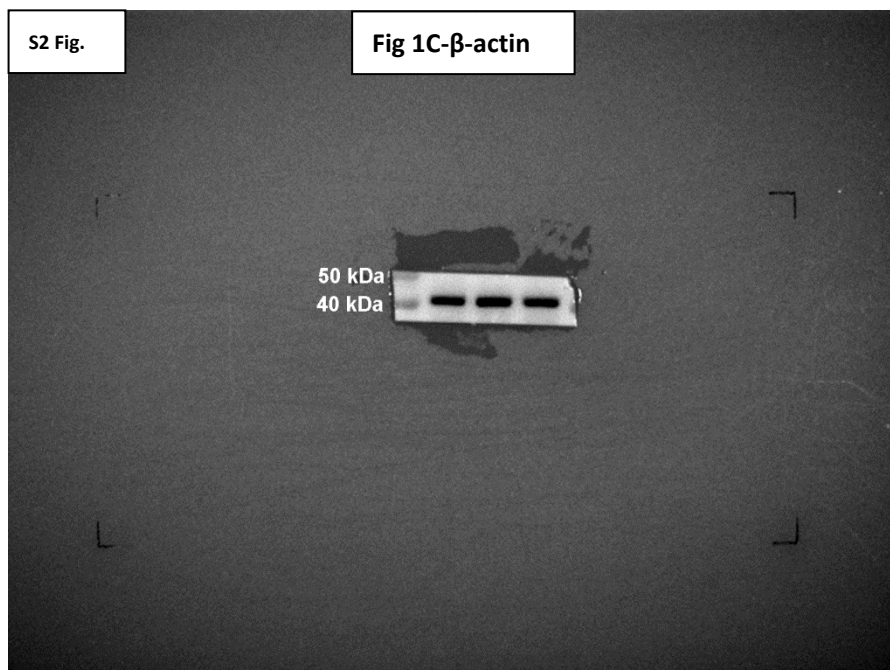


**Fig 1C:**

(1) The loading order: Control group, Lentivirus empty vector group and Lentivirus-T $\beta$ 4 group.

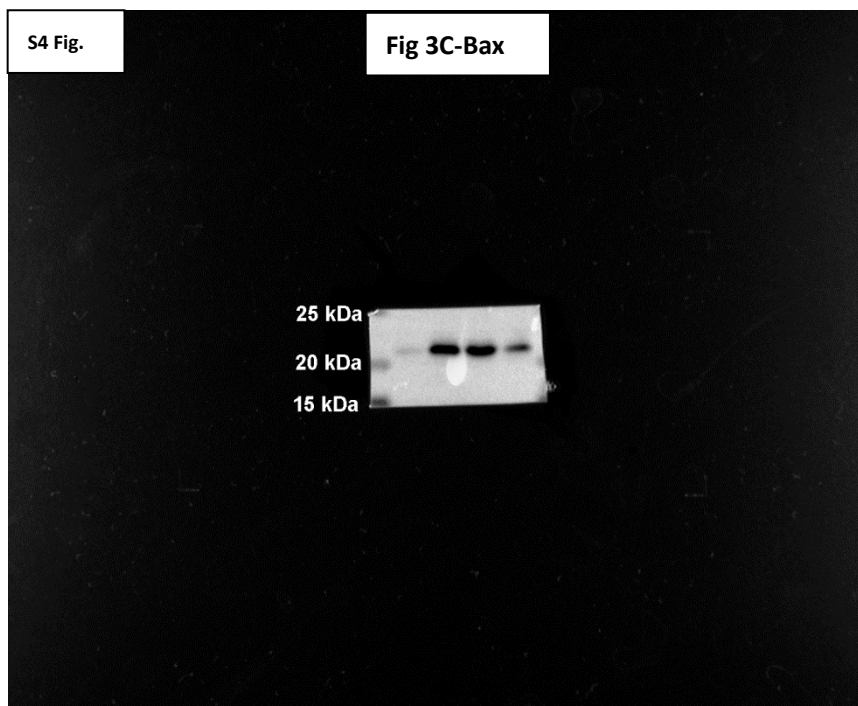
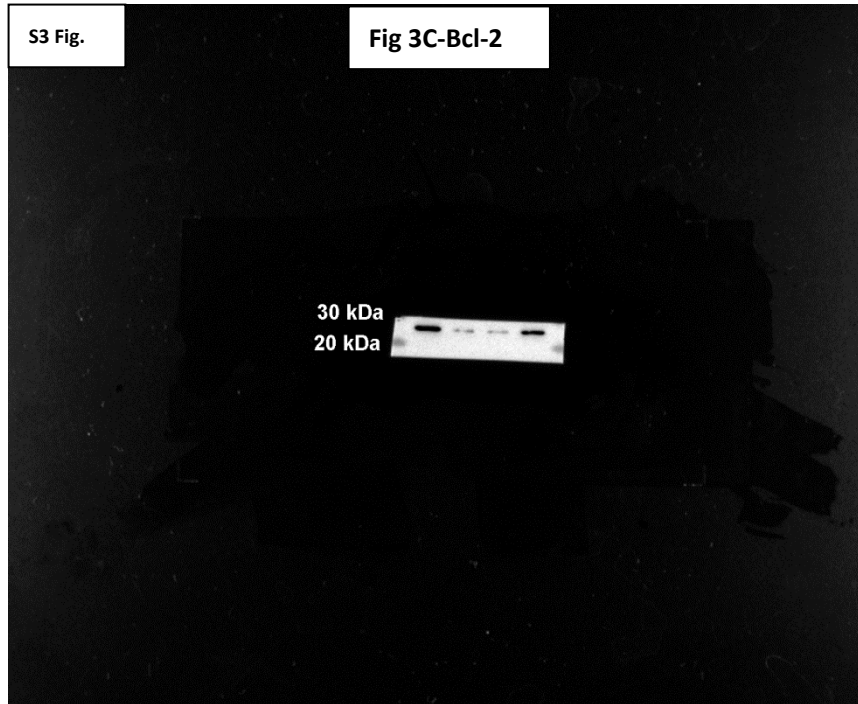
(2) Identity of experimental samples: cells.

(3) Method used to capture the image: Chemiluminescence



**Fig 3C:**

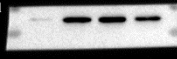
- (1) The loading order: Control group, A $\beta$  group, A $\beta$ +Lentivirus empty vector group and A $\beta$ +Lentivirus-T $\beta$ 4 group.
- (2) Identity of experimental samples: cells.
- (3) Method used to capture the image: Chemiluminescence



S5 Fig.

Fig 3C-Cleaved-Caspase-8

20 kDa  
15 kDa

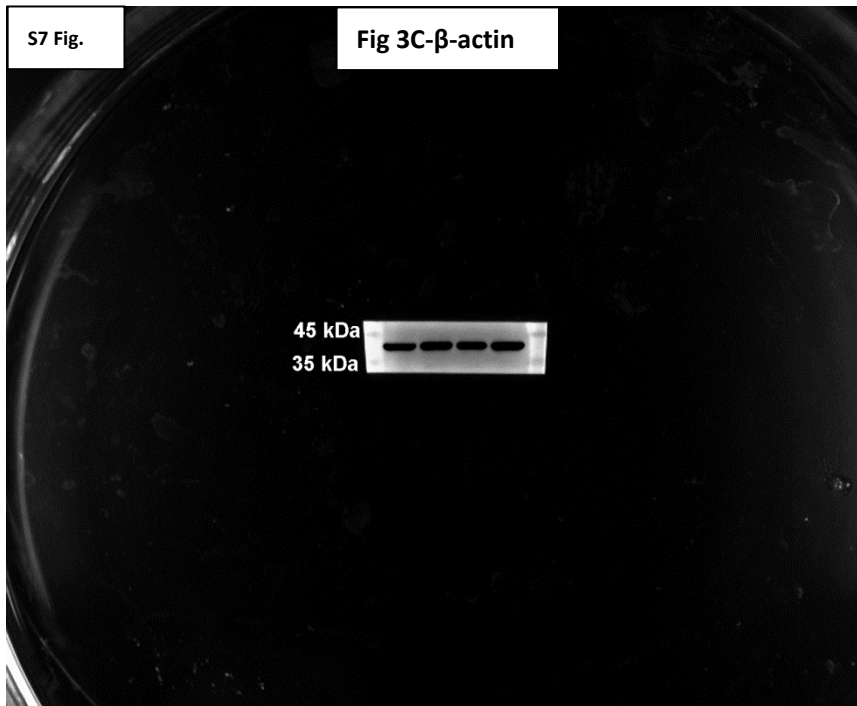
A Western blot image showing three lanes. The top row of bands is labeled '20 kDa' and the bottom row is labeled '15 kDa'. The bands in the 20 kDa row are significantly more intense than those in the 15 kDa row across all three lanes.

S6 Fig.

Fig 3C-Cleaved-Caspase-3

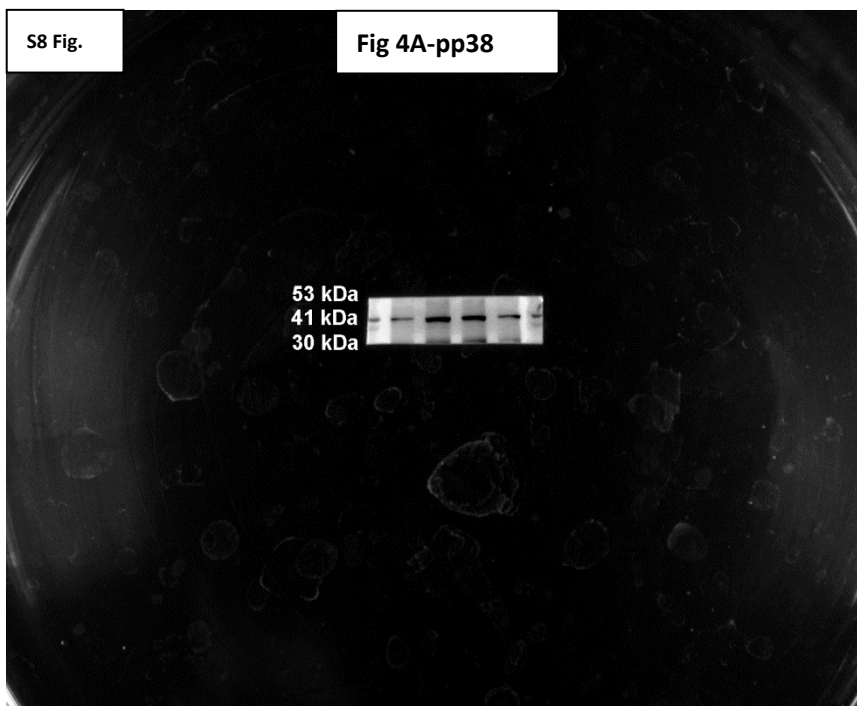
20 kDa  
15 kDa

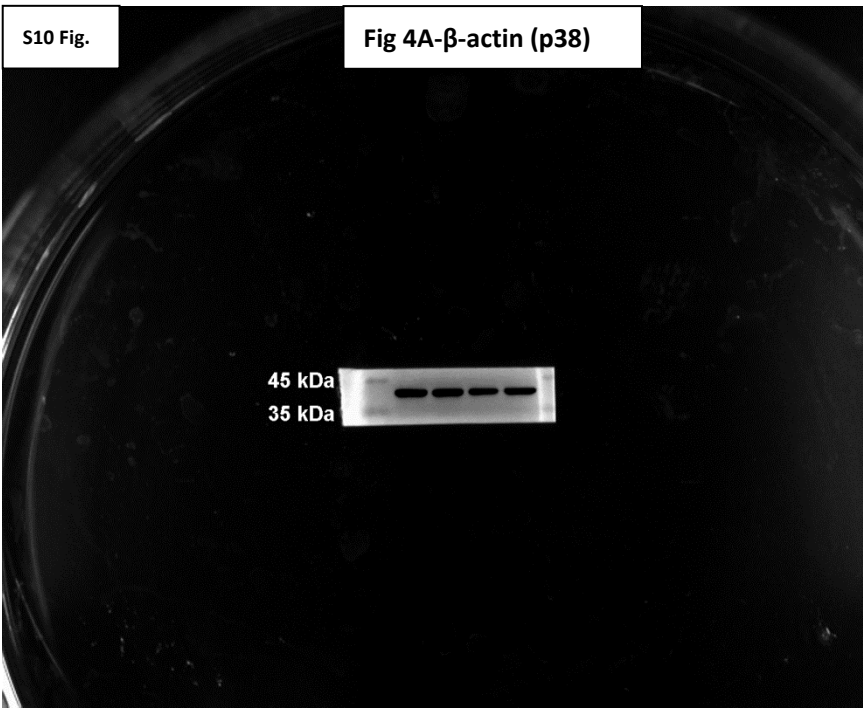
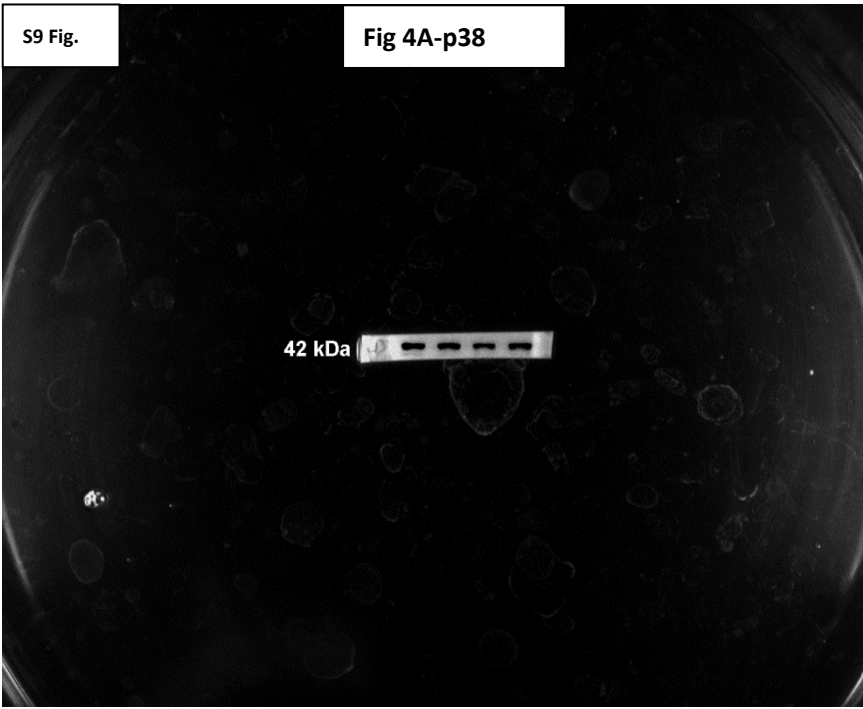
A Western blot image showing three lanes. The top row of bands is labeled '20 kDa' and the bottom row is labeled '15 kDa'. The bands in the 20 kDa row are significantly more intense than those in the 15 kDa row across all three lanes.



**Fig 4A:**

- (1) The loading order: Control group, A $\beta$  group, A $\beta$ +Lentivirus empty vector group and A $\beta$ +Lentivirus-T $\beta$ 4 group.
- (2) Identity of experimental samples: cells.
- (3) Method used to capture the image: Chemiluminescence





S11 Fig.

Fig 4A-pJNK

55 kDa  
40 kDa

A Western blot image showing two distinct bands. The upper band is labeled '55 kDa' and the lower band is labeled '40 kDa'. The bands are horizontal and appear as bright white lines against a dark background.

S12 Fig.

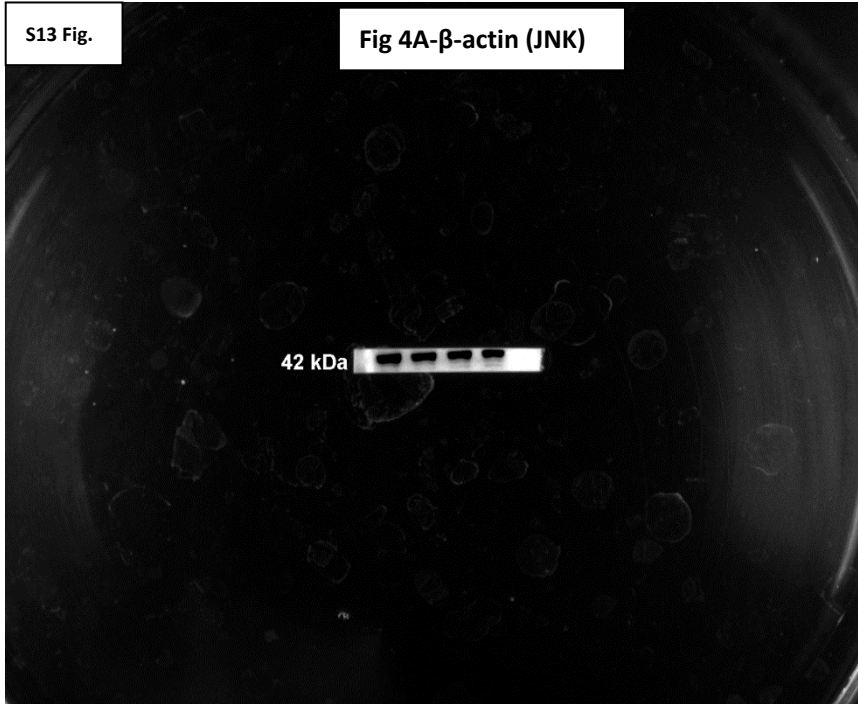
Fig 4A-JNK

70 kDa  
55 kDa

A Western blot image showing two distinct bands. The upper band is labeled '70 kDa' and the lower band is labeled '55 kDa'. The bands are horizontal and appear as bright white lines against a dark background.

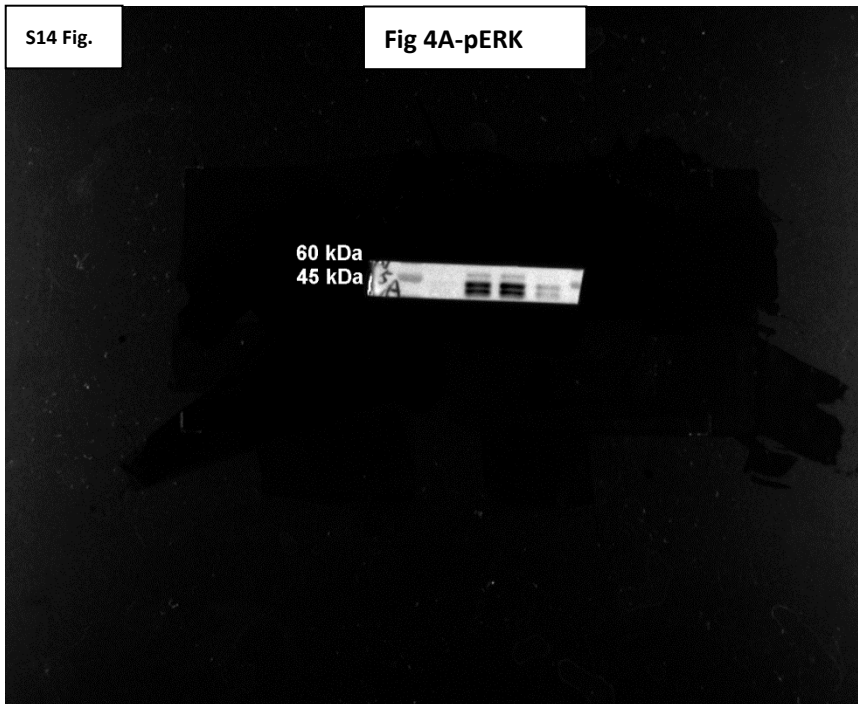
S13 Fig.

Fig 4A- $\beta$ -actin (JNK)



S14 Fig.


Fig 4A-pERK



S15 Fig.

Fig 4A-ERK

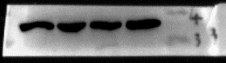
60 kDa  
45 kDa

A Western blot image showing two distinct bands. The upper band is labeled '60 kDa' and the lower band is labeled '45 kDa'. The bands are of similar intensity across the lanes.

S16 Fig.

Fig 4A- $\beta$ -actin (ERK)

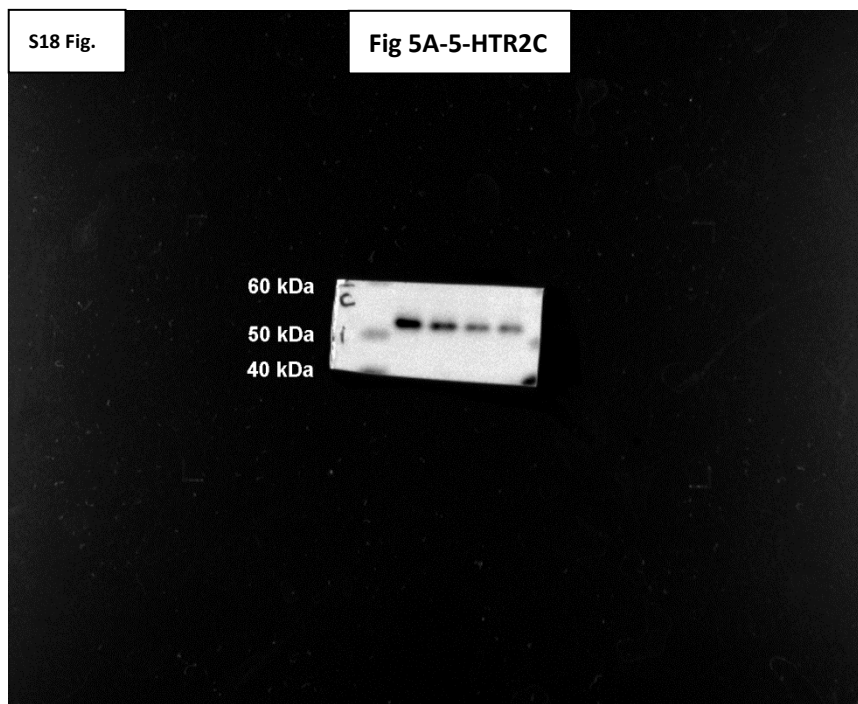
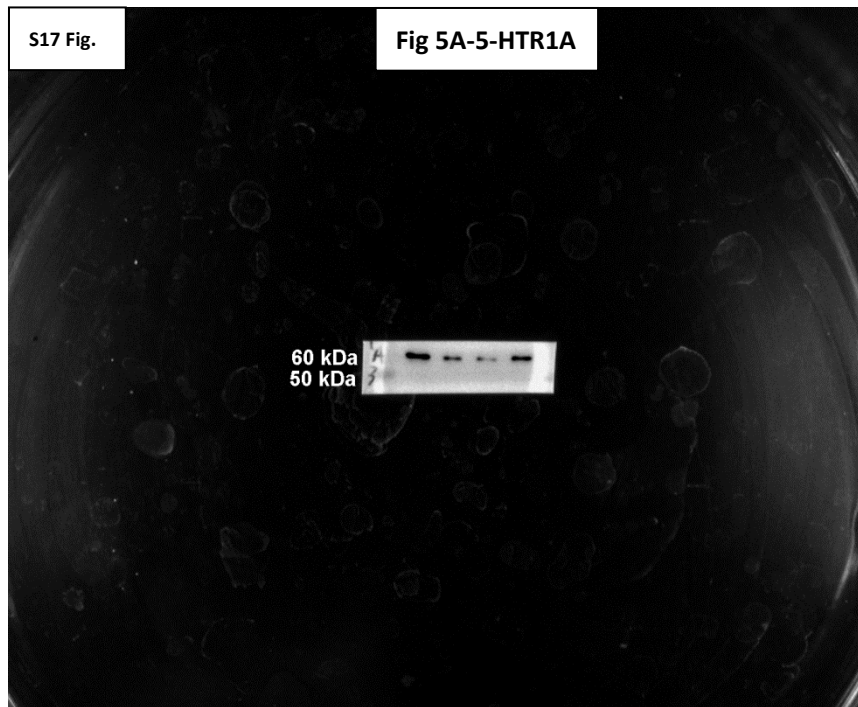
45 kDa  
35 kDa

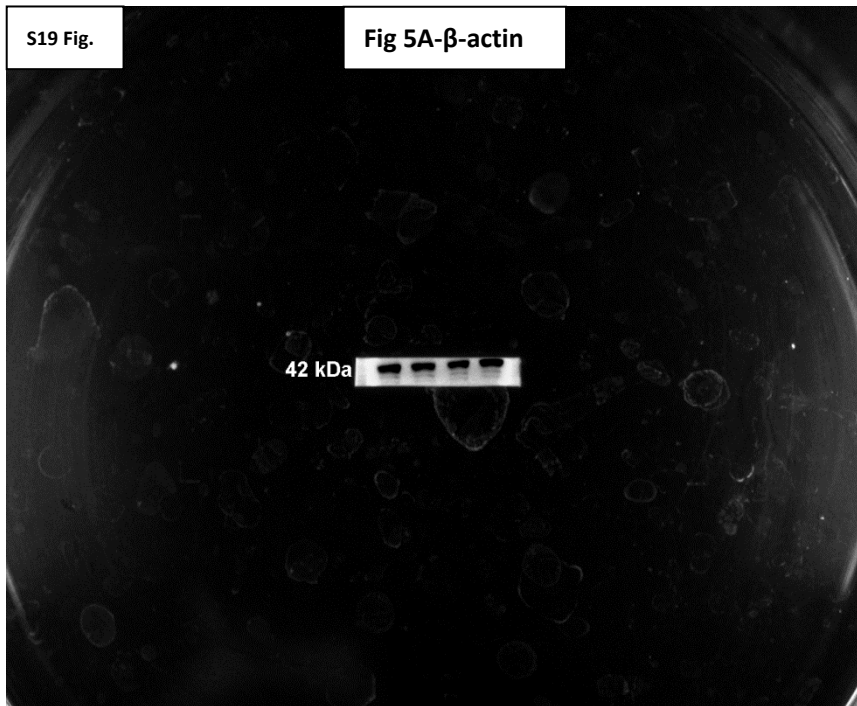
A Western blot image showing two distinct bands. The upper band is labeled '45 kDa' and the lower band is labeled '35 kDa'. The bands are of similar intensity across the lanes.



**Fig 5A:**

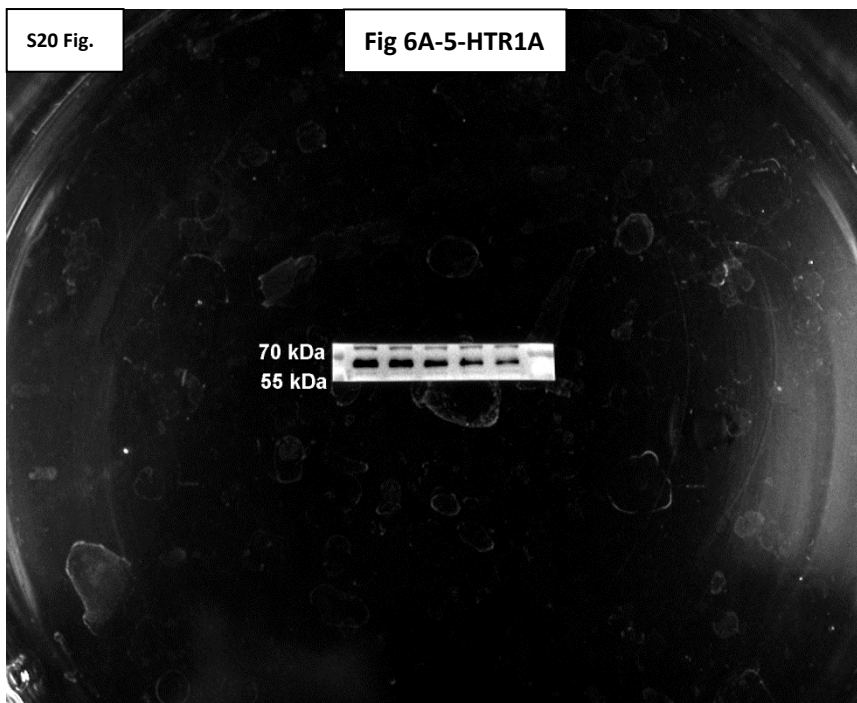
- (1) The loading order: Control group, A $\beta$  group, A $\beta$ +Lentivirus empty vector group and A $\beta$ +Lentivirus-T $\beta$ 4 group.
- (2) Identity of experimental samples: cells.
- (3) Method used to capture the image: Chemiluminescence

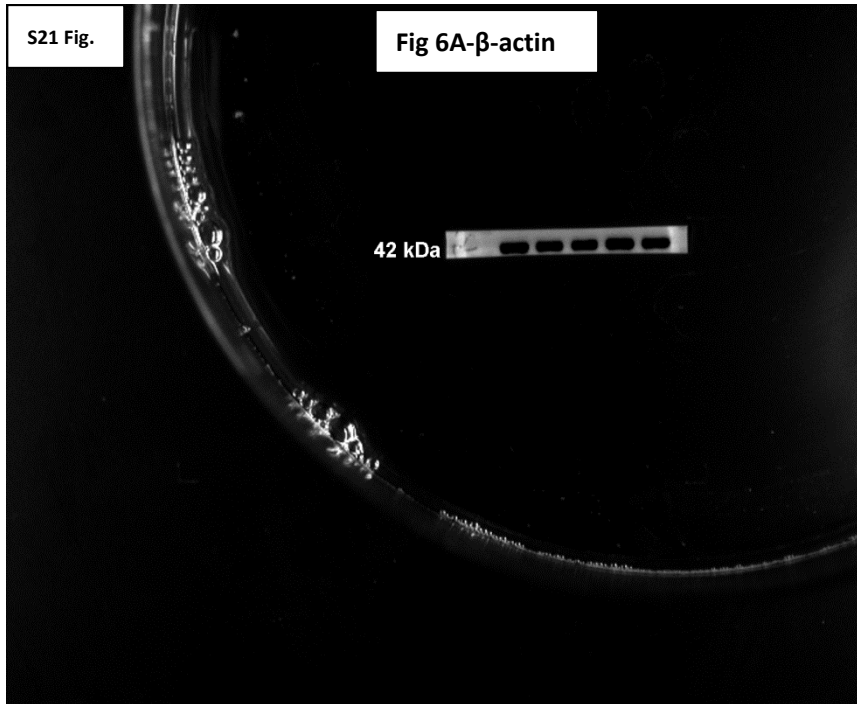




**Fig 6A:**

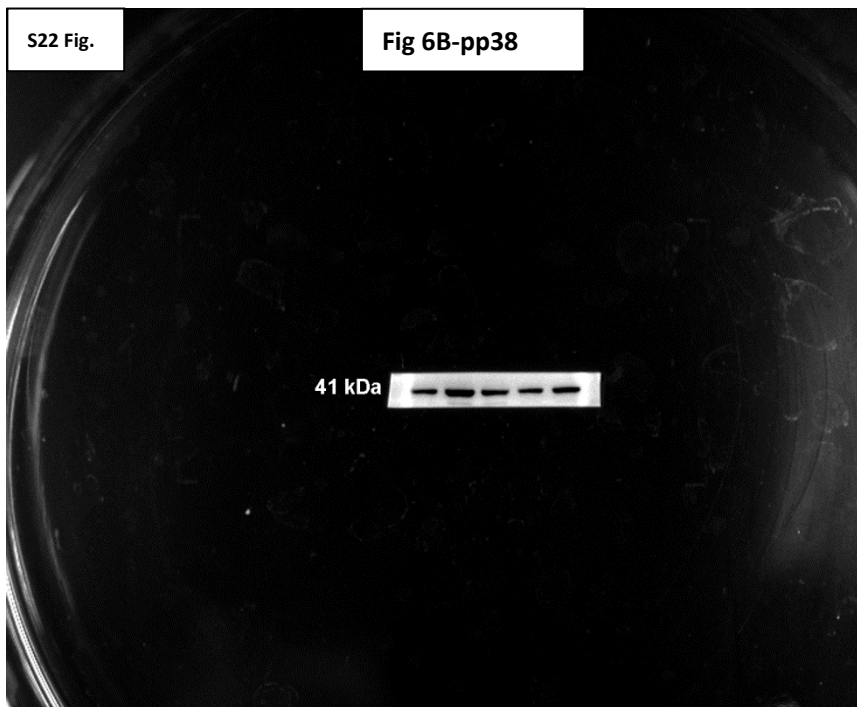
- (1) The loading order: Control group, si-NC group, si-1 group, si-2 group and si-3 group.
- (2) Identity of experimental samples: cells.
- (3) Method used to capture the image: Chemiluminescence

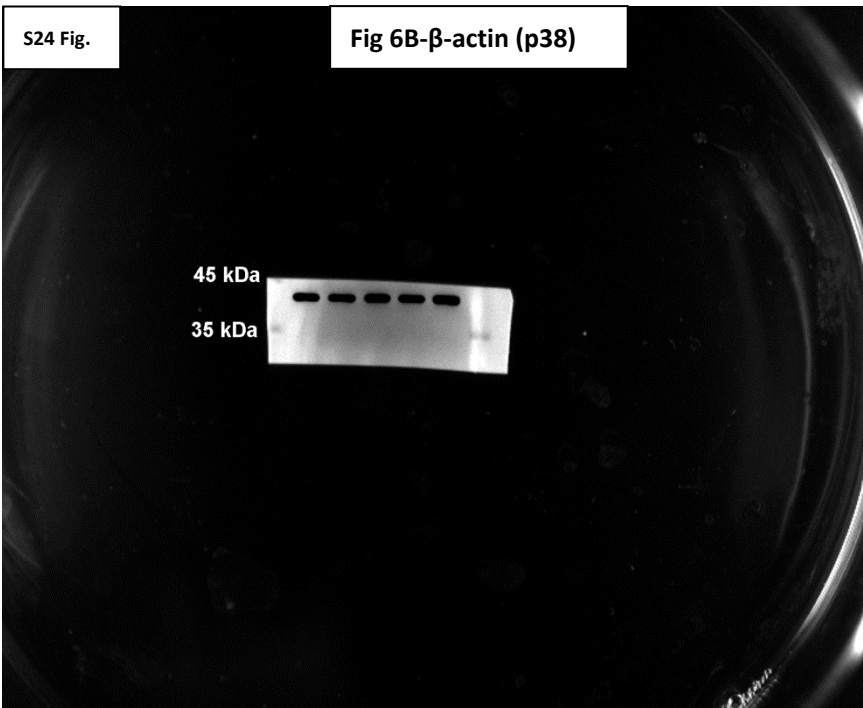
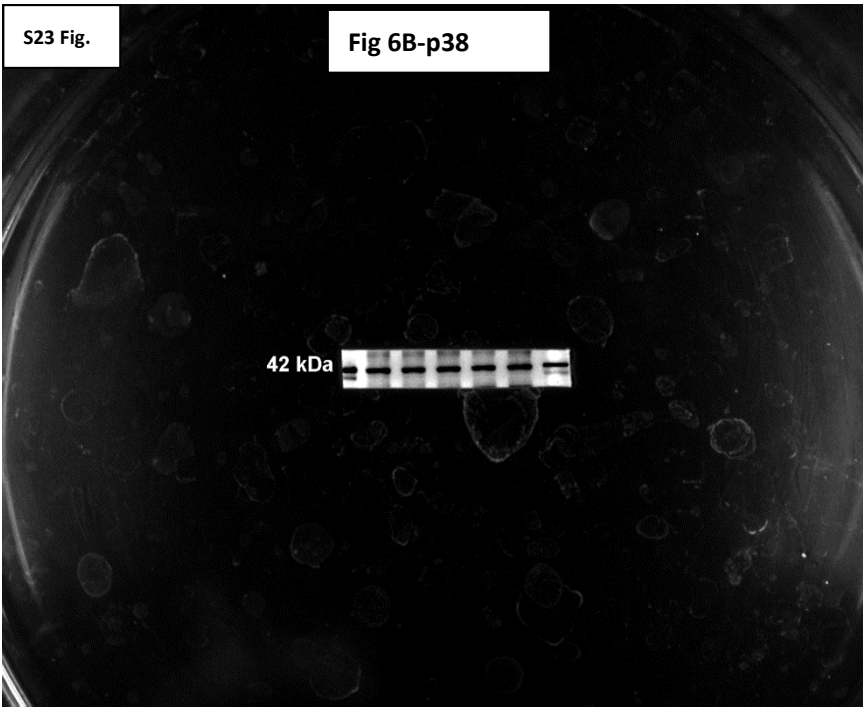




**Fig 6B:**

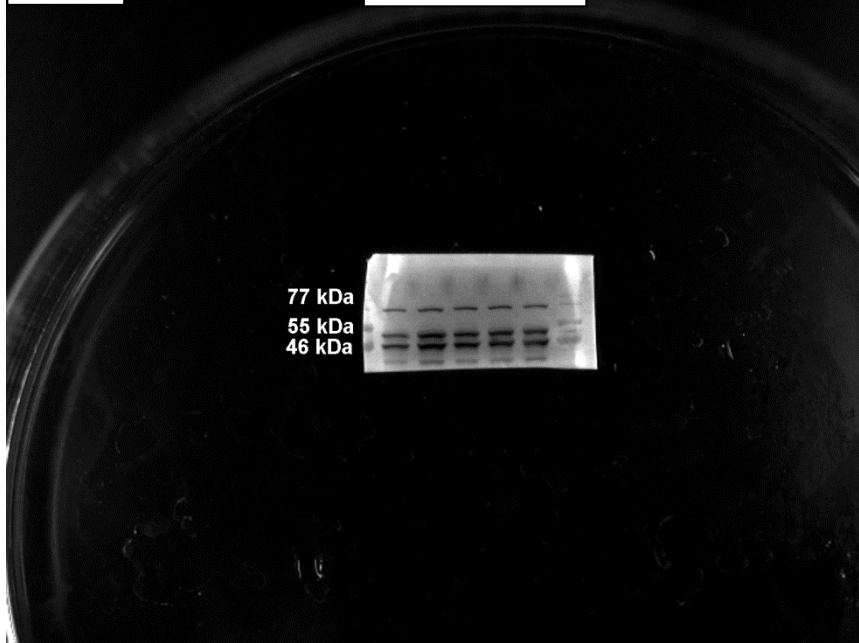
- (1) The loading order: Control group, A $\beta$  group, A $\beta$ +Lentivirus-T $\beta$ 4, A $\beta$ +Lentivirus-T $\beta$ 4 si-NC group and A $\beta$ +Lentivirus-T $\beta$ 4 si-3 group.
- (2) Identity of experimental samples: cells.
- (3) Method used to capture the image: Chemiluminescence





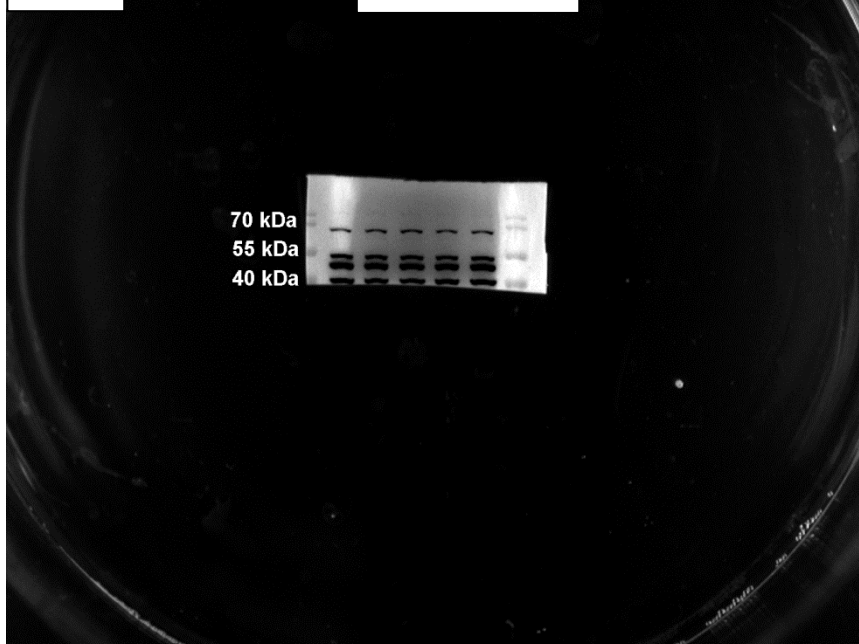
S25 Fig.

Fig 6B-pJNK



S26 Fig.

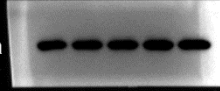
Fig 6B-JNK



S27 Fig.

Fig 6B- $\beta$ -actin (JNK)

42 kDa



S28 Fig.

Fig 6B-pERK

53 kDa  
42 kDa

