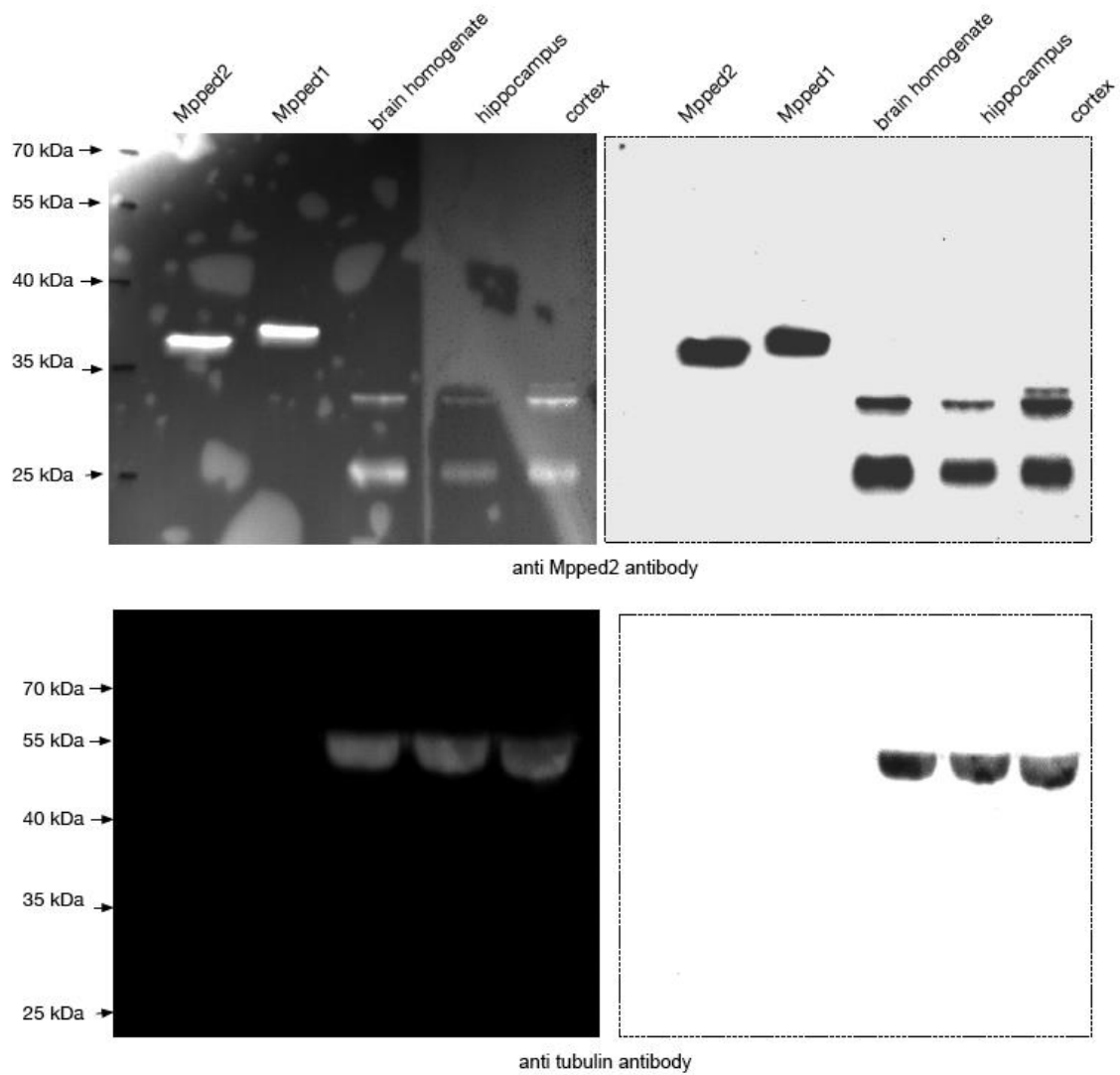


S6 FigA

Full blot for Figure 5B

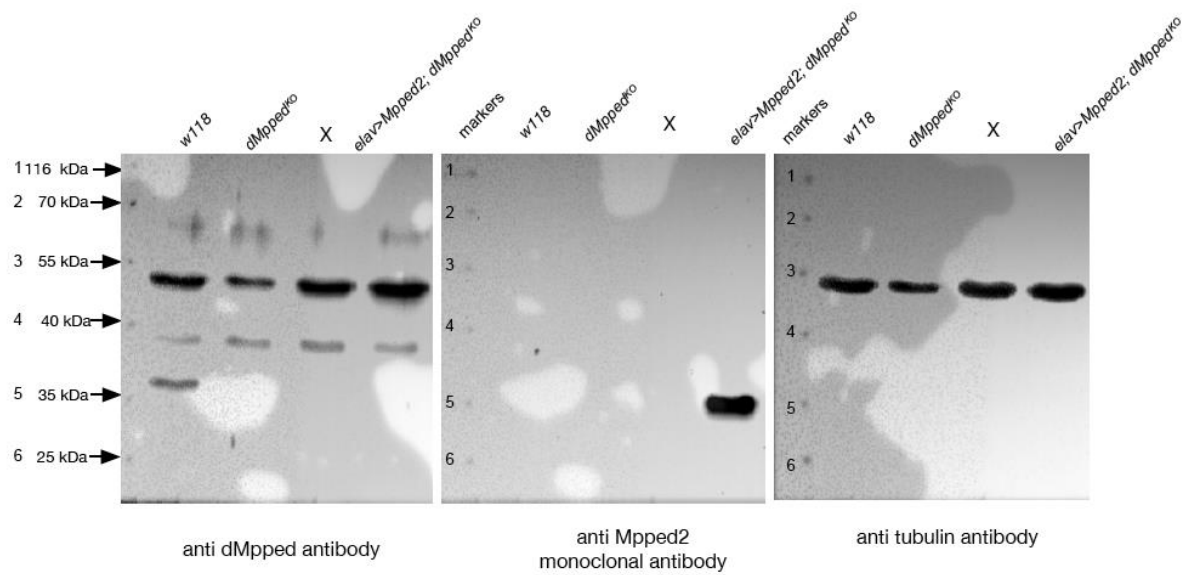
A



Entire blot for Figure 5B, shown with markers and image captured from the chemiluminescence and the reverse image used in the Figure 5B.

S6 Fig B

B



Entire blot for Figure 5E. X represents an irrelevant lane for this Figure. Numbers to the left of the blots refer to the molecular weight markers shown in the leftmost blot.

References

- 1 Hautakangas, H., Winsvold, B. S., Ruotsalainen, S. E., Bjornsdottir, G., Harder, A. V. E., Kogelman, L. J. A., Thomas, L. F., Noordam, R., Benner, C., Gormley, P., *et al.* 2022 Genome-wide analysis of 102,084 migraine cases identifies 123 risk loci and subtype-specific risk alleles. *Nat Genet.* **54**, 152-160. (10.1038/s41588-021-00990-0)
- 2 Swarup, S., Williams, T. I., Anholt, R. R. 2011 Functional dissection of Odorant binding protein genes in *Drosophila melanogaster*. *Genes Brain Behav.* **10**, 648-657. (10.1111/j.1601-183X.2011.00704.x)