

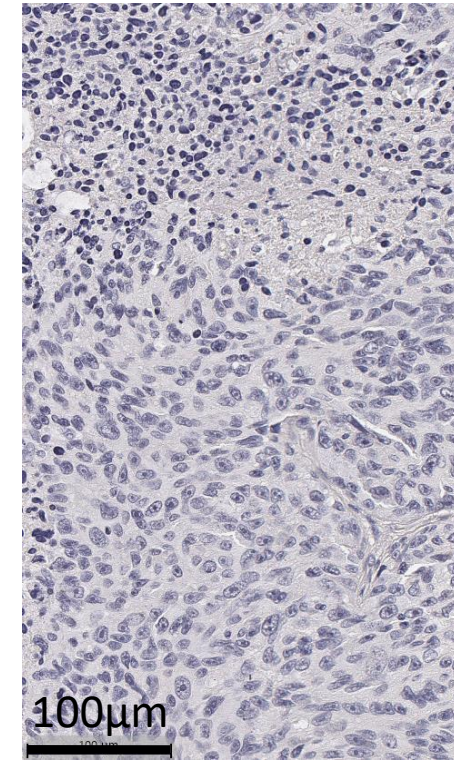
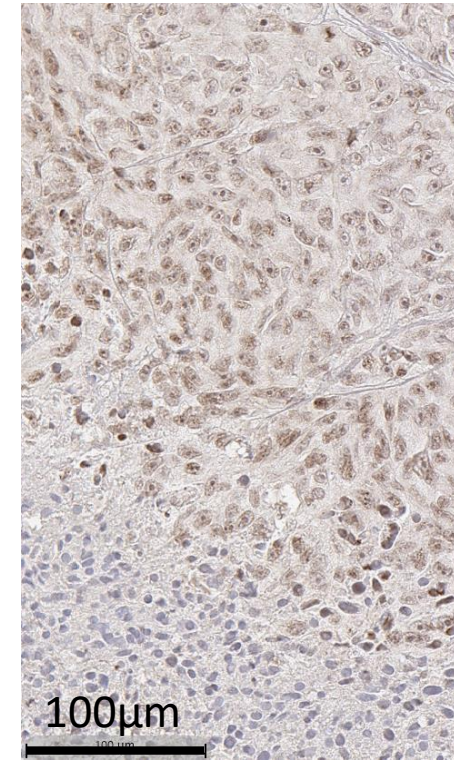
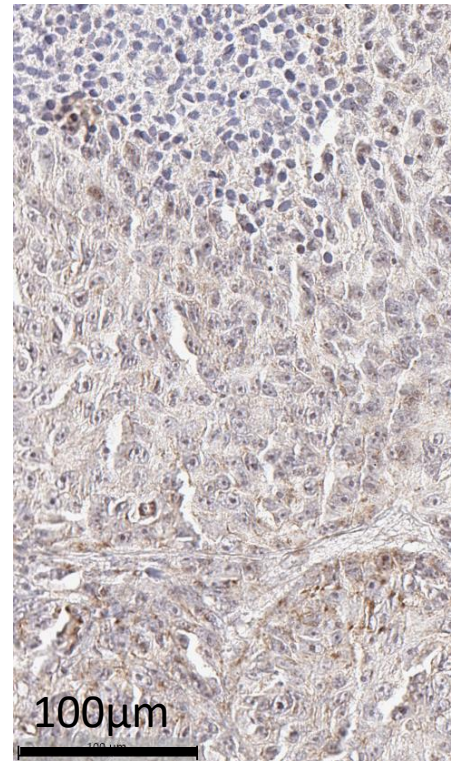
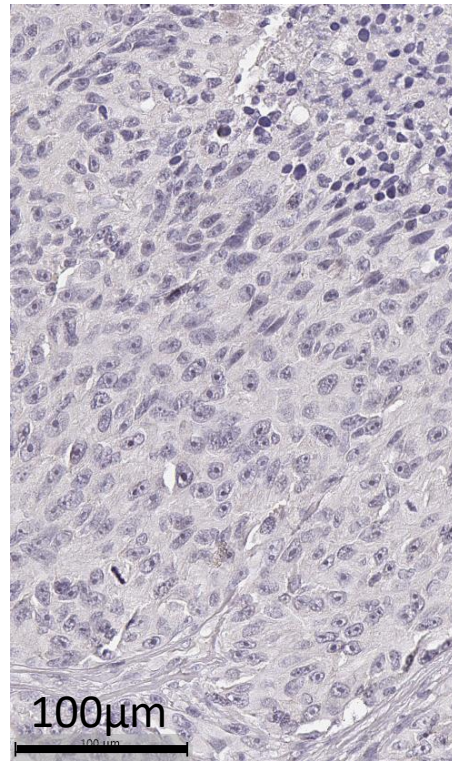
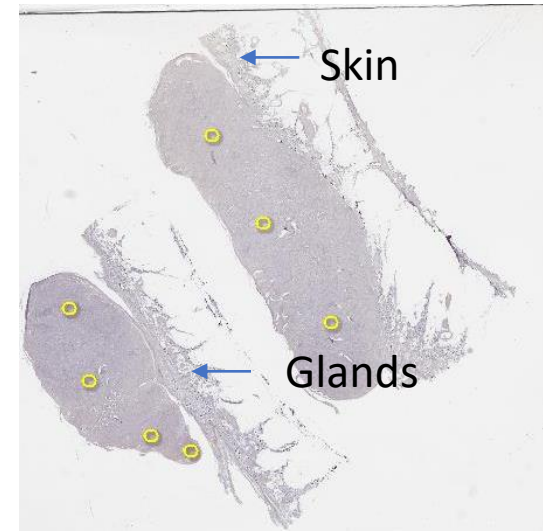
Q2020-064-S066  
Primary melanoma  
Slide: 126445, TAp53

TAp53 H-scores:  
Cytoplasm: 0.00  
Nucleus: 0.25

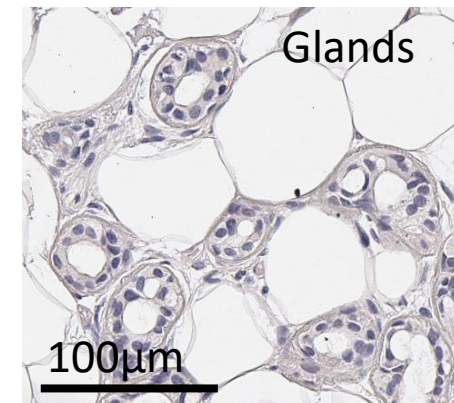
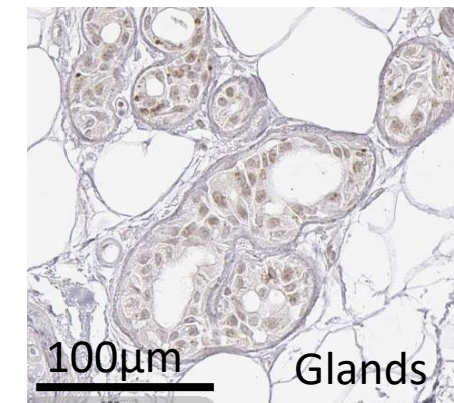
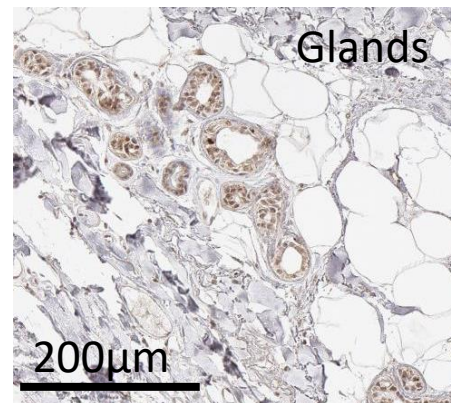
p53 $\beta$  H-scores:  
Cytoplasm: 51.62  
Nucleus: 16.21

$\Delta$ 133p53 H-scores:  
Cytoplasm: 1.67  
Nucleus: 38.00

$\Delta$ 40p53 H-scores:  
Cytoplasm: 0.00  
Nucleus: 0.10



TAp53 cytoplasm low  
TAp53 nucleus low  
 $\Delta$ 40p53 cytoplasm low  
 $\Delta$ 40p53 nucleus low





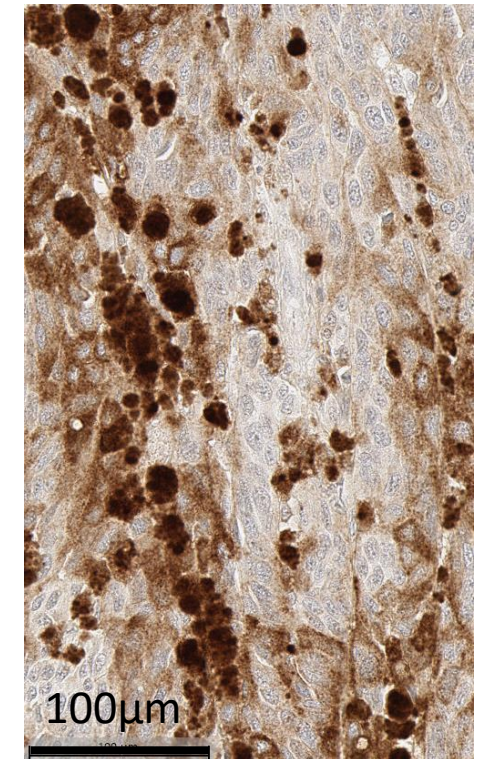
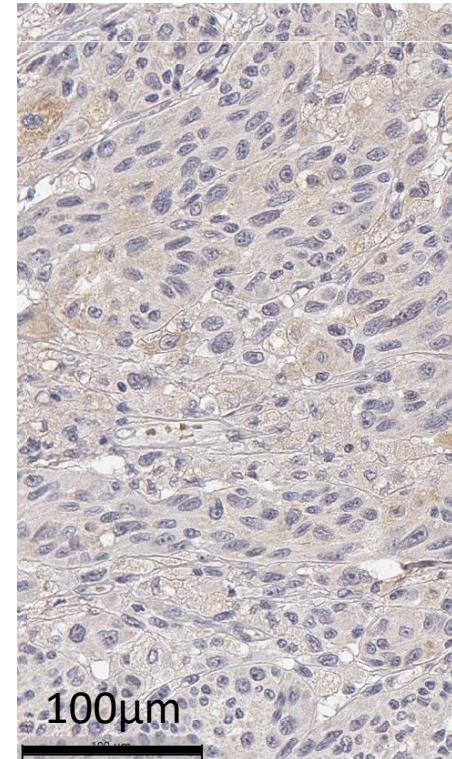
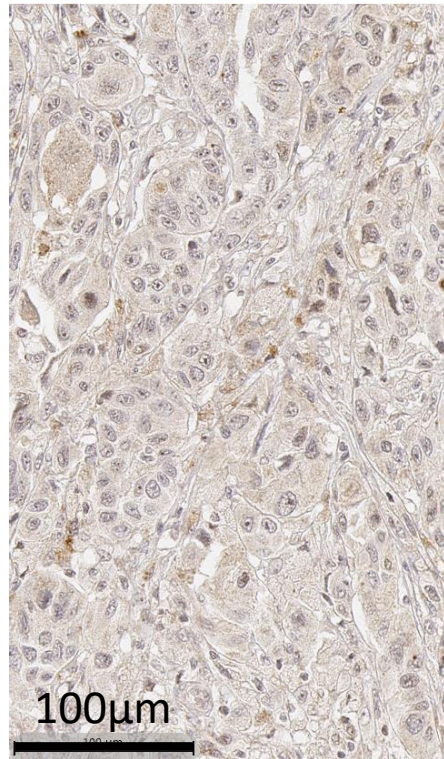
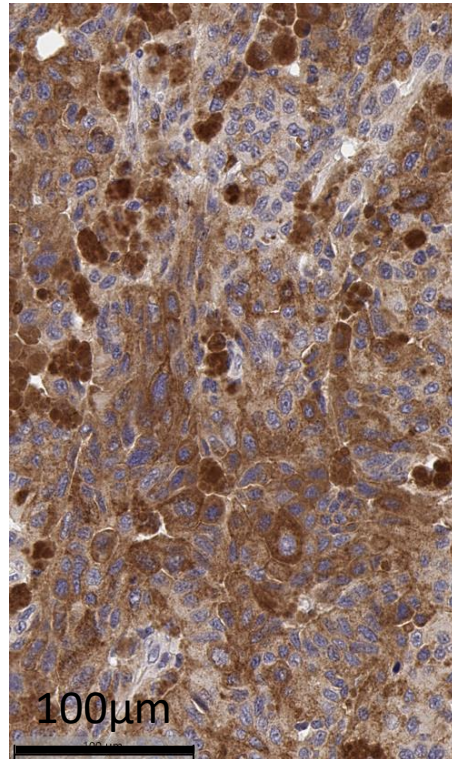
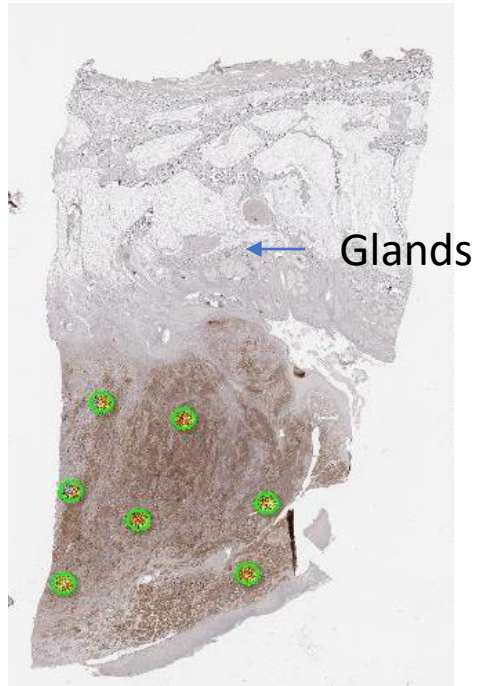
Q2020-064-S006  
Primary melanoma  
Slide: 126413, TAp53

TAp53 H-scores:  
Cytoplasm: 128.07  
Nucleus: 140.59

p53 $\beta$  H-scores:  
Cytoplasm: 0.52  
Nucleus: 31.55

$\Delta$ 133p53 H-scores:  
Cytoplasm: 0.57  
Nucleus: 6.33

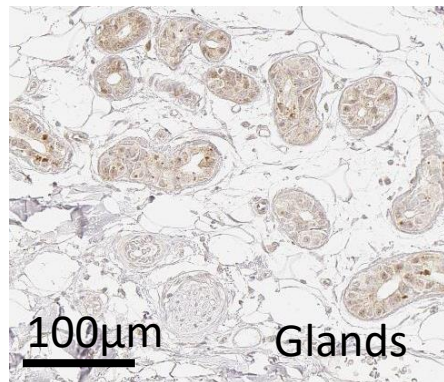
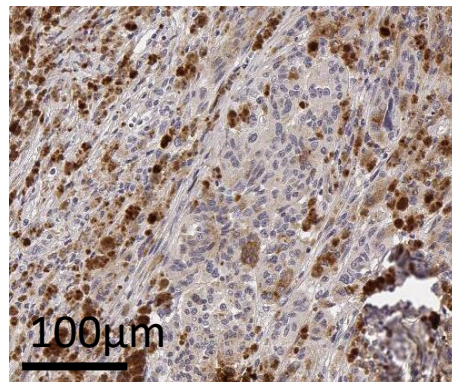
$\Delta$ 40p53 H-scores:  
Cytoplasm: 71.91  
Nucleus: 141.70



TAp53 cytoplasm high

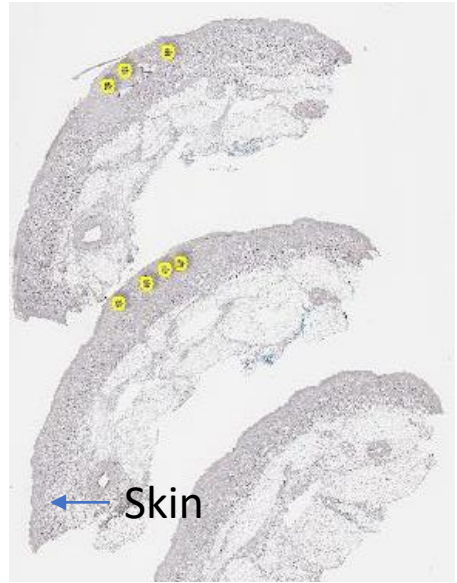
$\Delta$ 40p53 cytoplasm moderate

**Infiltrating immune cells**



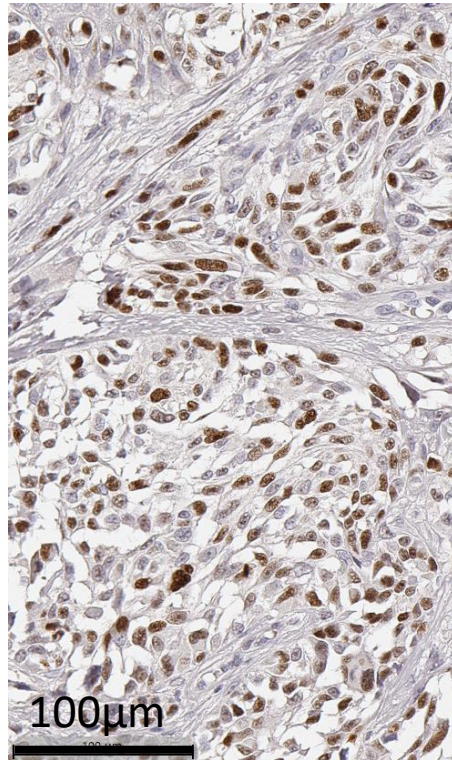


Q2020-064-S010  
Primary melanoma  
Slide: 126410, TAp53

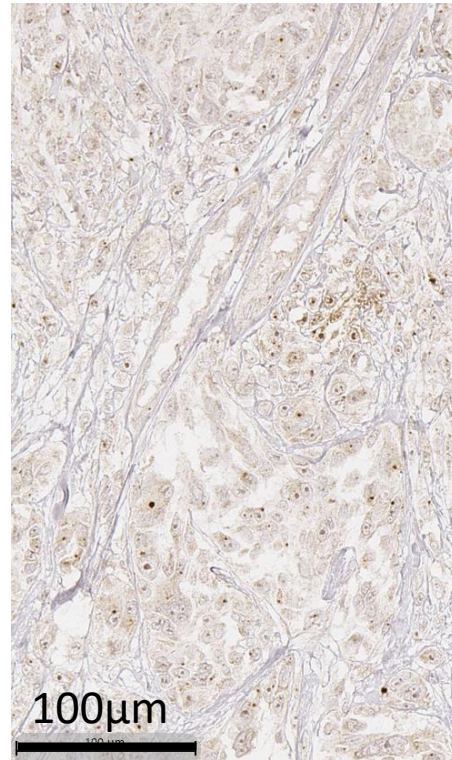


$\Delta 40p53$  nucleus  
moderate

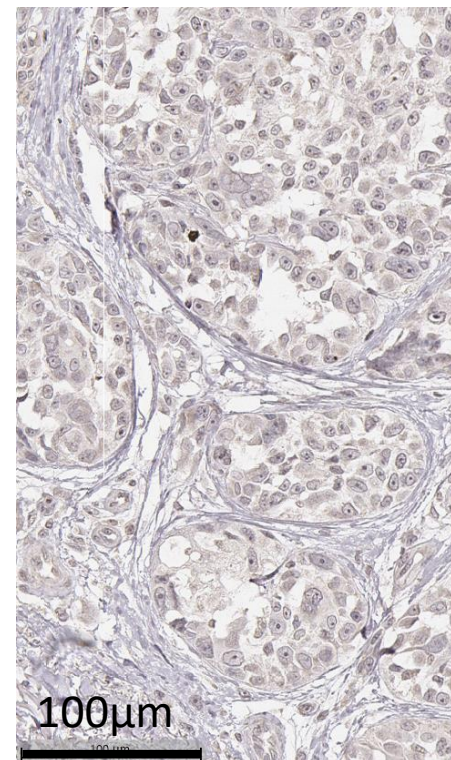
TAp53 H-scores:  
Cytoplasm: 11.42  
Nucleus: 49.91



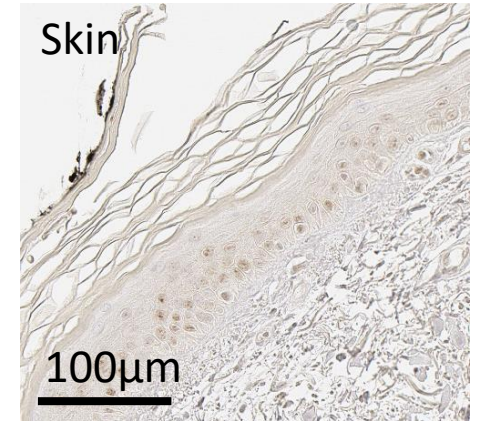
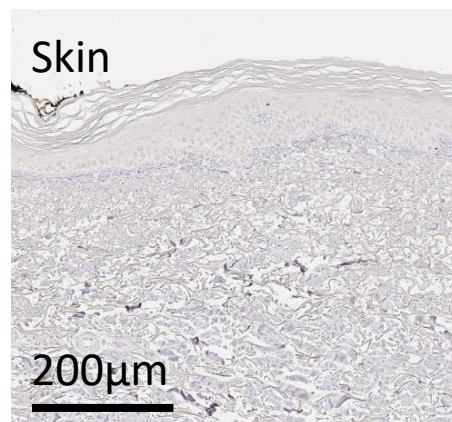
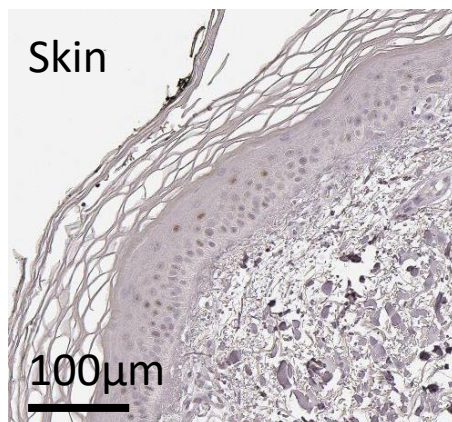
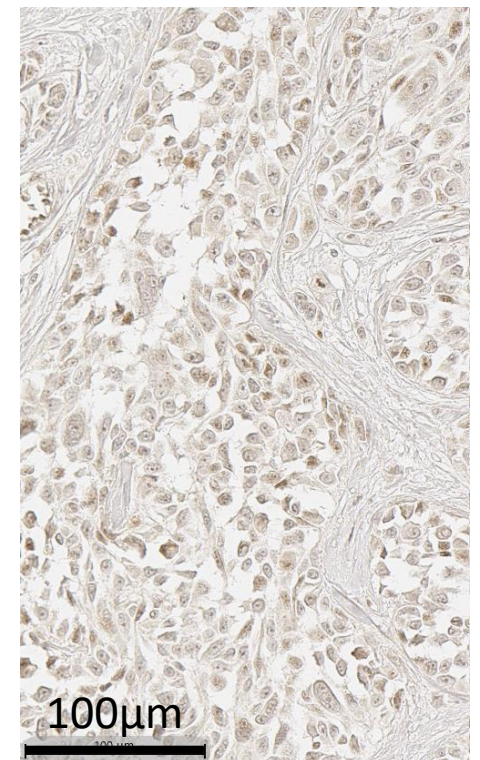
p53 $\beta$  H-scores:  
Cytoplasm: 0.10  
Nucleus: 55.99



$\Delta 133p53$  H-scores:  
Cytoplasm: 0.50  
Nucleus: 7.13



$\Delta 40p53$  H-scores:  
Cytoplasm: 0.23  
Nucleus: 59.82





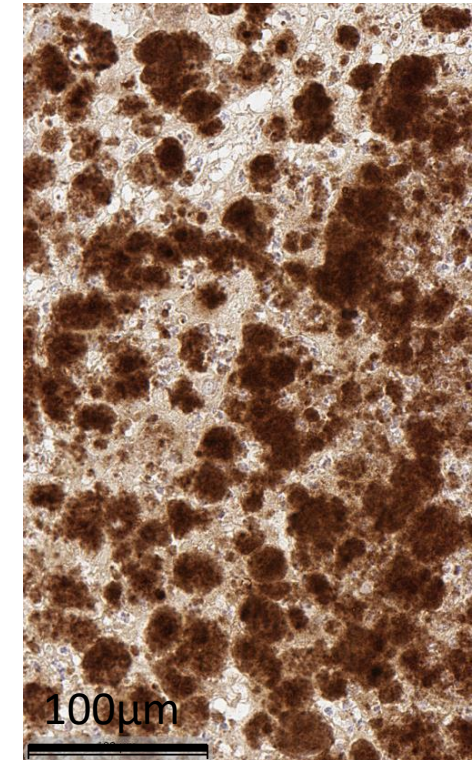
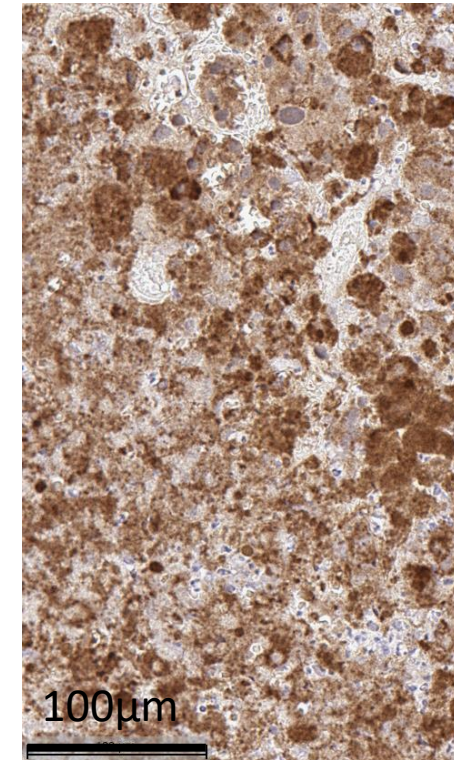
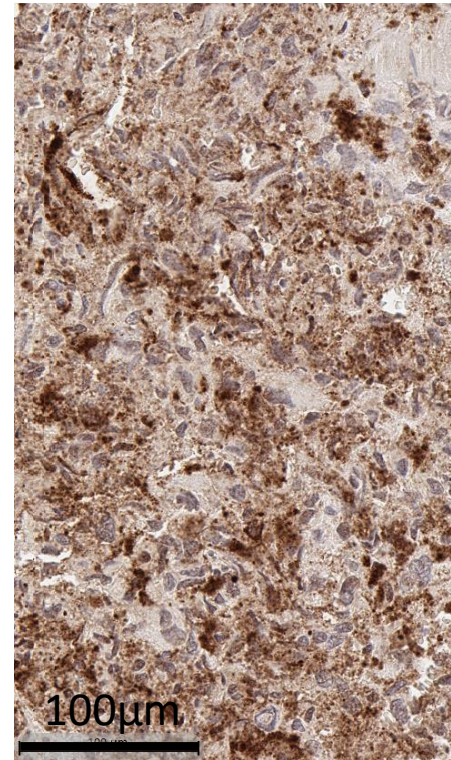
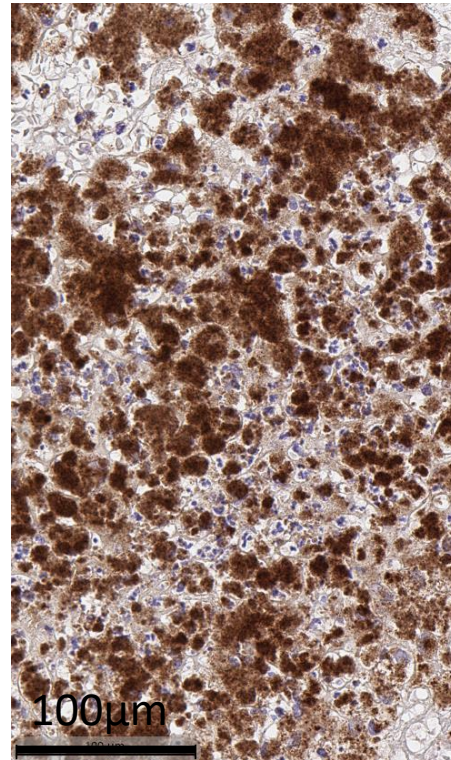
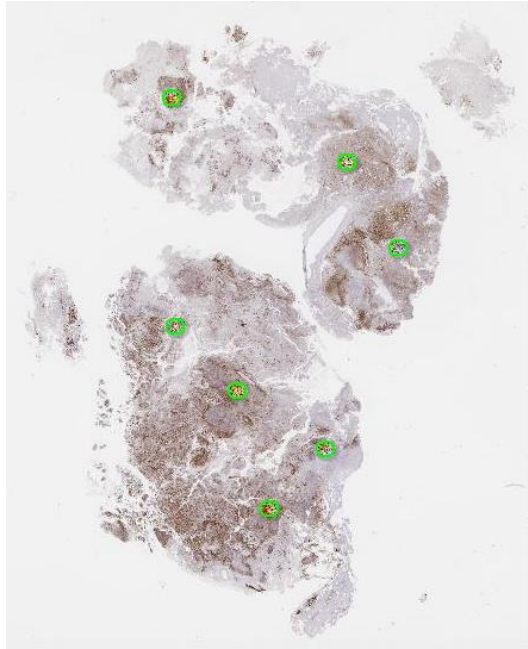
Q2020-064-S116  
Metastatic melanoma  
Lymph Node  
Slide: 128246, TAp53

TAp53 H-scores:  
Cytoplasm: 69.55  
Nucleus: 115.30

p53 $\beta$  H-scores:  
Cytoplasm: 149.68  
Nucleus: 210.65

$\Delta$ 133p53 H-scores:  
Cytoplasm: 125.614  
Nucleus: 209.44

$\Delta$ 40p53 H-scores:  
Cytoplasm: 144.52  
Nucleus: 232.81



p53 $\beta$  cytoplasm high

$\Delta$ 133p53 cytoplasm  
high

$\Delta$ 40p53 cytoplasm high  
 $\Delta$ 40p53 nucleus high



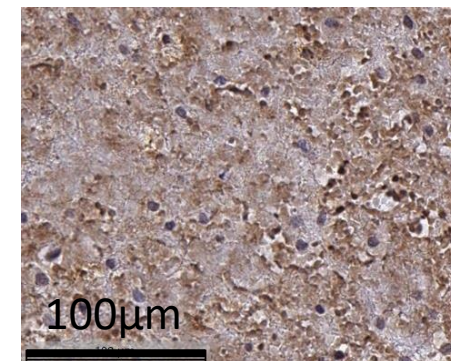
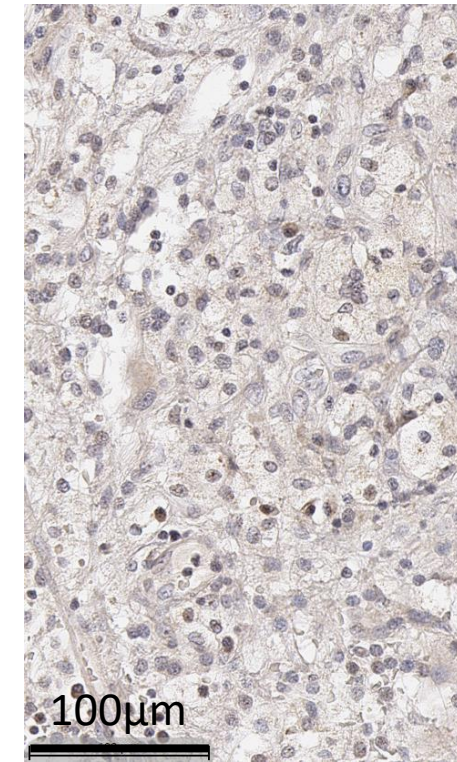
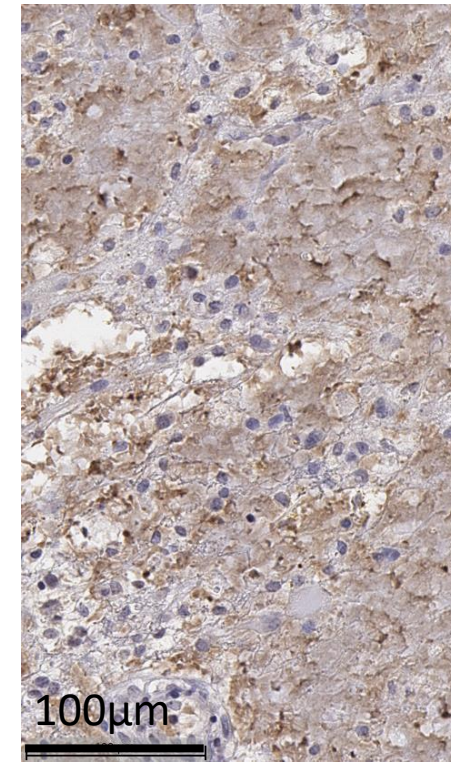
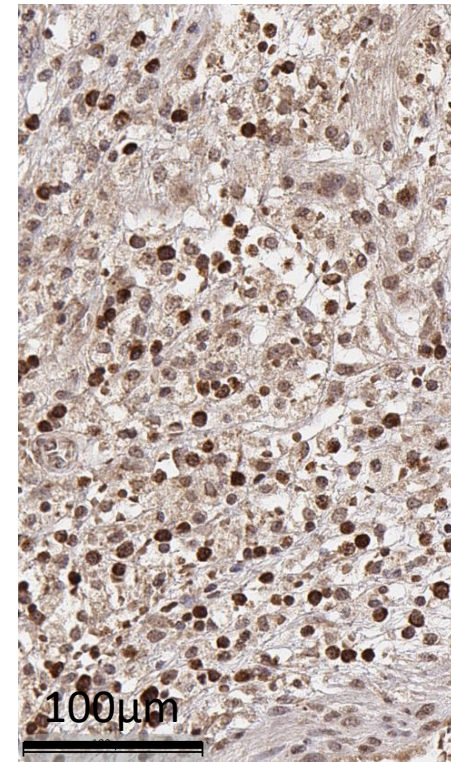
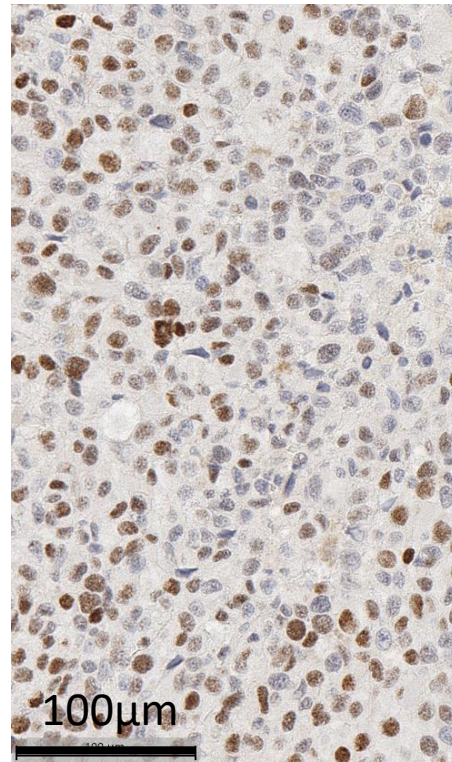
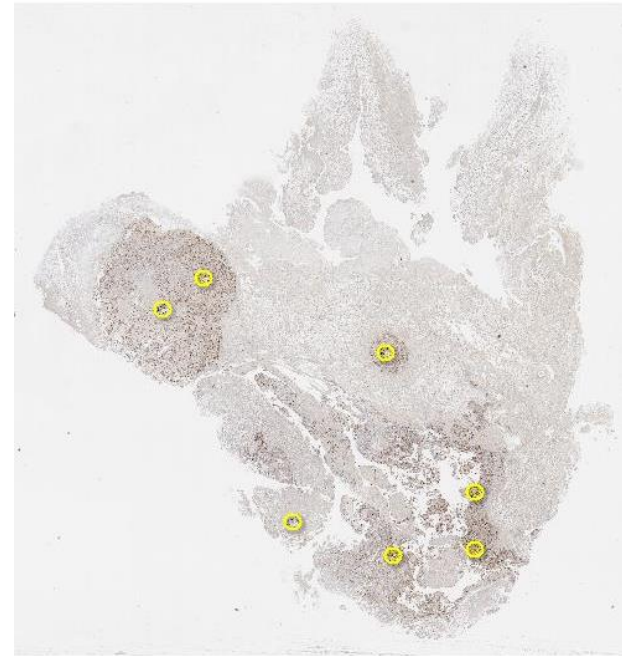
Q2020-064-S110  
Metastatic melanoma  
Brain  
Slide: 126474, TAp53

TAp53 H-scores:  
Cytoplasm: 58.72  
Nucleus: 139.38

p53 $\beta$  H-scores:  
Cytoplasm: 84.24  
Nucleus: 151.04

$\Delta$ 133p53 H-scores:  
Cytoplasm: 45.23  
Nucleus: 80.87

$\Delta$ 40p53 H-scores:  
Cytoplasm: 0.59  
Nucleus: 27.42



p53 $\beta$  nucleus high

$\Delta$ 133p53 cytoplasm moderate



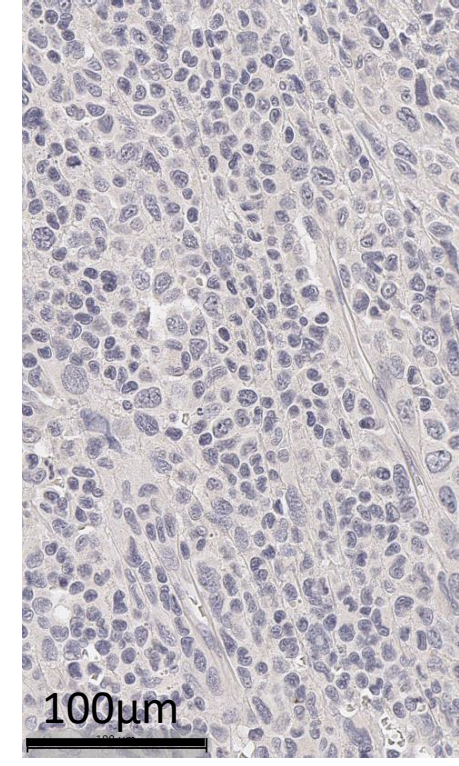
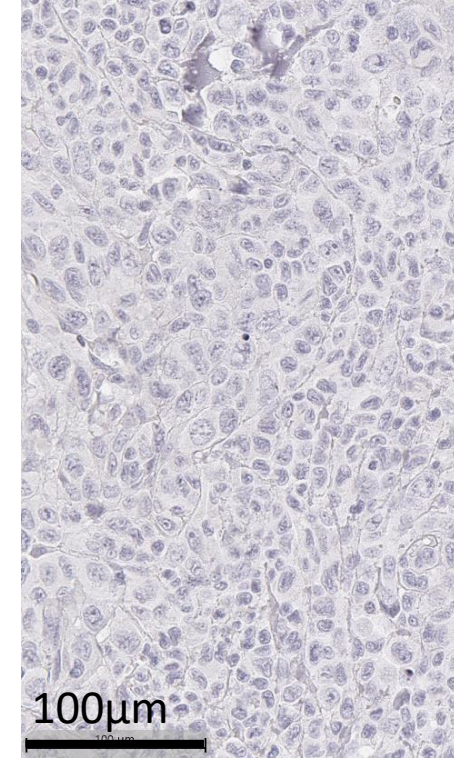
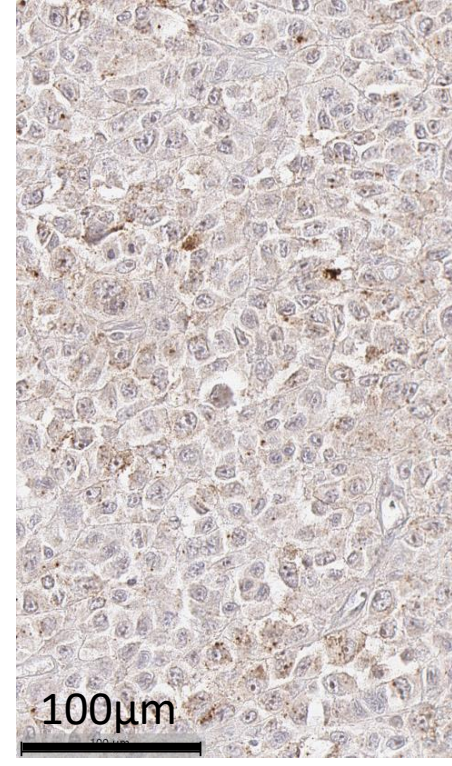
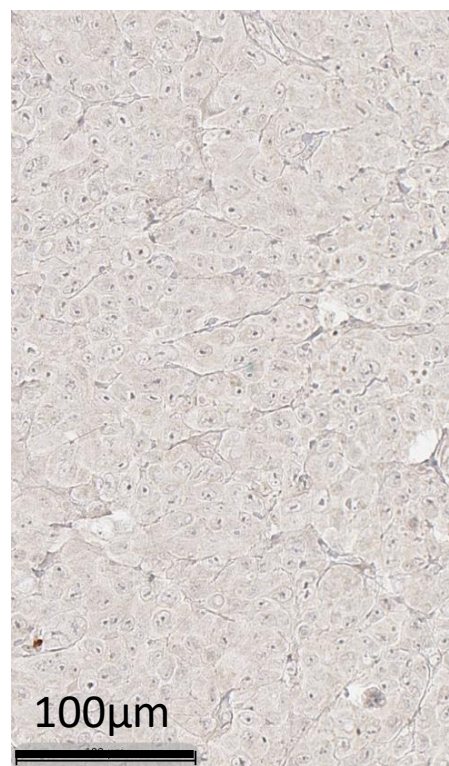
Q2020-064-S023  
Primary melanoma  
Slide: 126420, TAp53

TAp53 H-scores:  
Cytoplasm: 0.00  
Nucleus: 10.74

p53 $\beta$  H-scores:  
Cytoplasm: 0.78  
Nucleus: 37.45

$\Delta$ 133p53 H-scores:  
Cytoplasm: 0.00  
Nucleus: 0.36

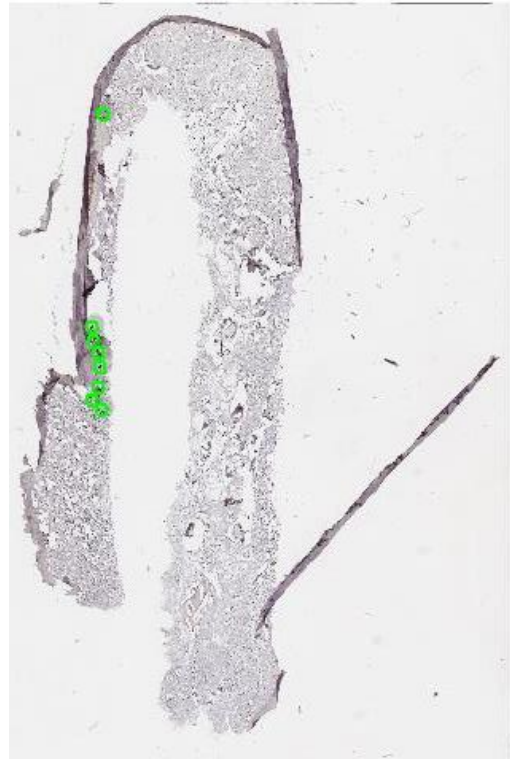
$\Delta$ 40p53 H-scores:  
Cytoplasm: 0.00  
Nucleus: 0.53



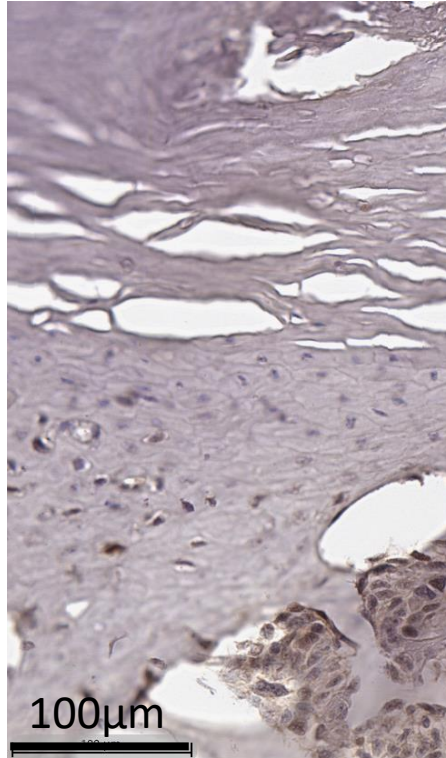
$\Delta$ 133p53 cytoplasm  
low  
 $\Delta$ 133p53 nucleus low



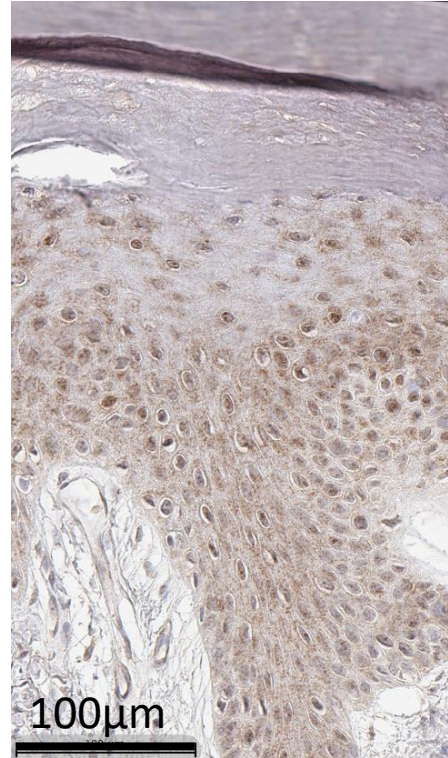
Q2020-064-S107  
Primary melanoma  
Slide: 126472, TAp53



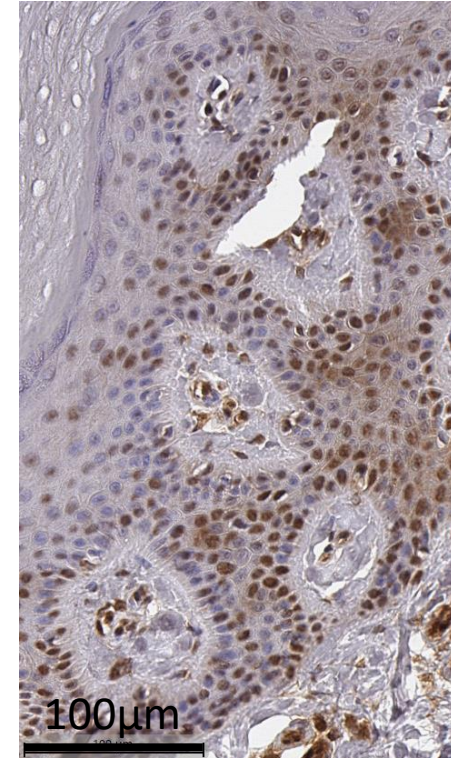
TAp53 H-scores:  
Cytoplasm: 12.91  
Nucleus: 43.15



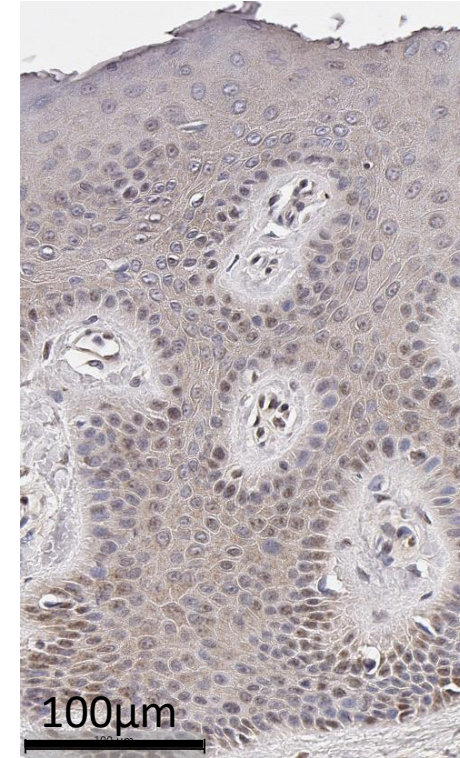
p53 $\beta$  H-scores:  
Cytoplasm: 10.83  
Nucleus: 58.22



$\Delta$ 133p53 H-scores:  
Cytoplasm: 28.81  
Nucleus: 55.58



$\Delta$ 40p53 H-scores:  
Cytoplasm: 8.36  
Nucleus: 32.04



$\Delta$ 133p53 nucleus  
moderate



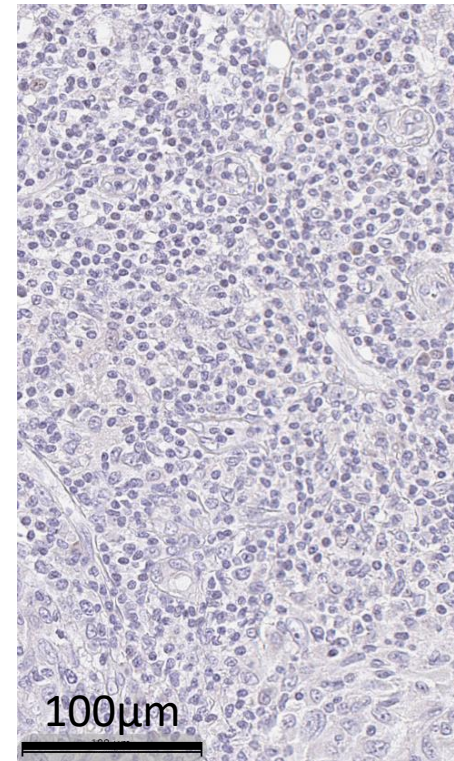
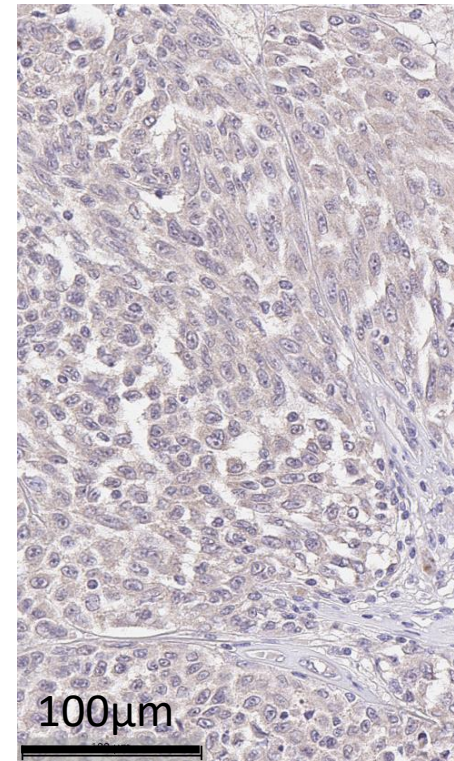
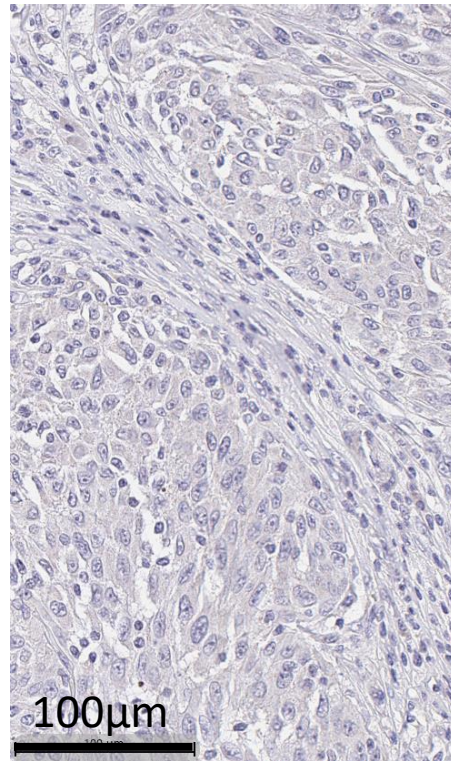
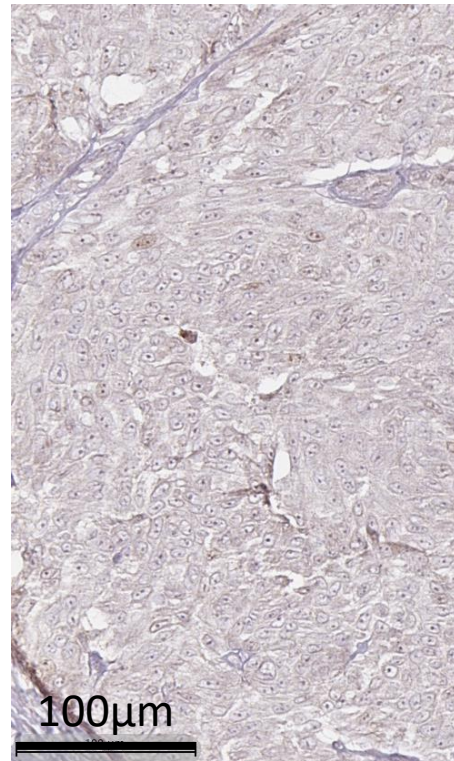
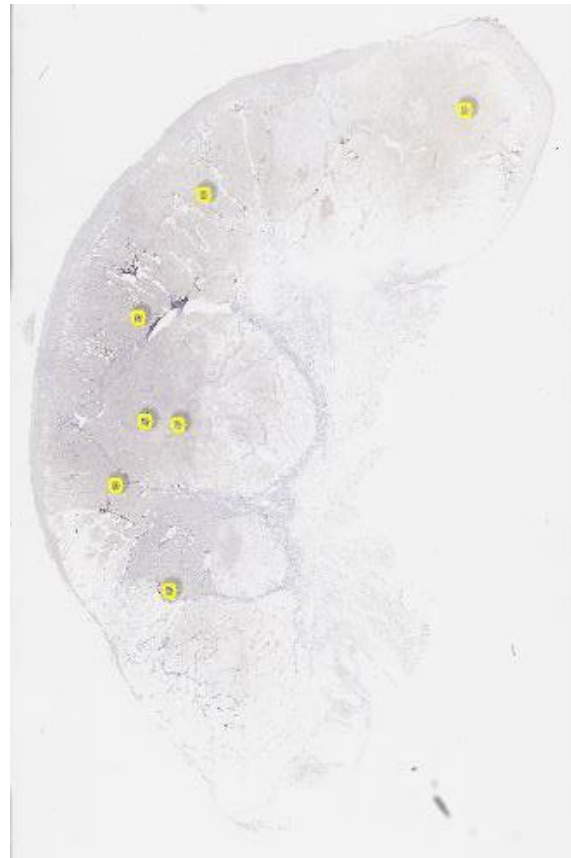
Q2020-064-S119  
Primary melanoma  
Slide: 128243, TAp53

TAp53 H-scores:  
Cytoplasm: 0.00  
Nucleus: 7.15

p53 $\beta$  H-scores:  
Cytoplasm: 0.00  
Nucleus: 3.13

$\Delta$ 133p53 H-scores:  
Cytoplasm: 0.13  
Nucleus: 3.86

$\Delta$ 40p53 H-scores:  
Cytoplasm: 1.26  
Nucleus: 6.07



p53 $\beta$  cytoplasm low



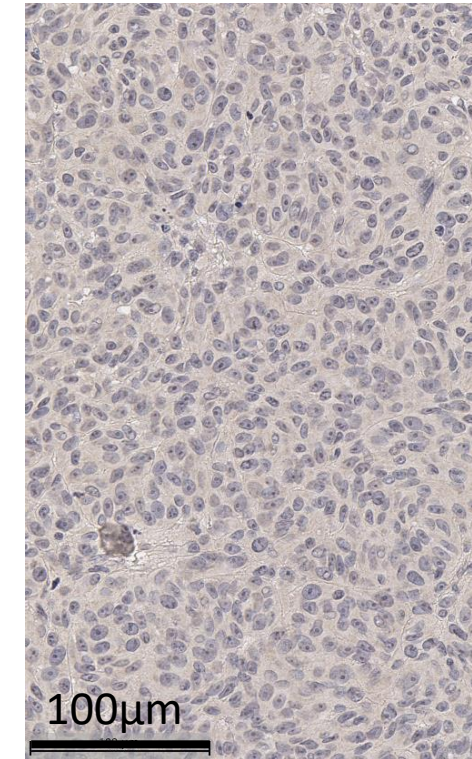
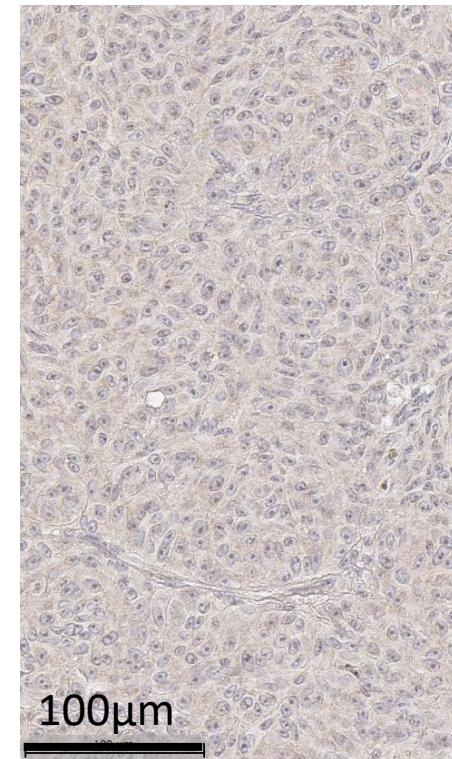
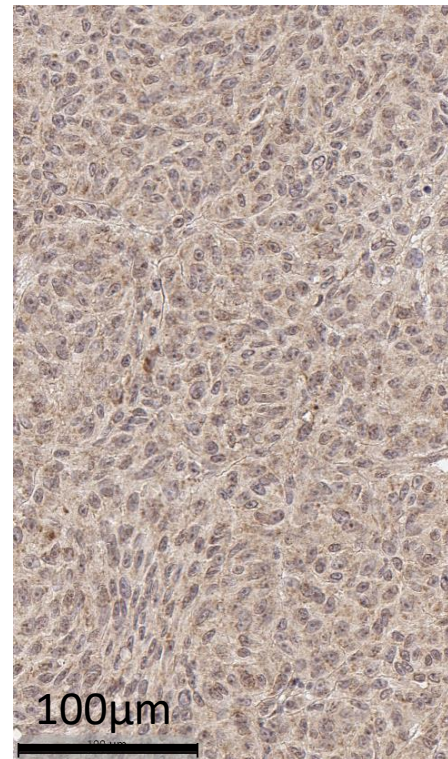
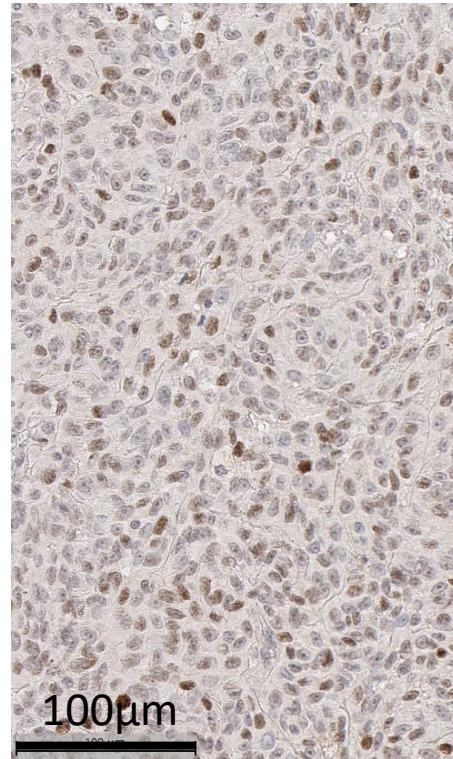
Q2020-064-S090  
Metastatic melanoma  
Lymph Node  
Slide: 126458, TAp53

TAp53 H-scores:  
Cytoplasm: 12.74  
Nucleus: 65.34

p53 $\beta$  H-scores:  
Cytoplasm: 72.77  
Nucleus: 94.67

$\Delta$ 133p53 H-scores:  
Cytoplasm: 0.01  
Nucleus: 3.42

$\Delta$ 40p53 H-scores:  
Cytoplasm: 0.00  
Nucleus: 0.46



p53 $\beta$  cytoplasm  
moderate



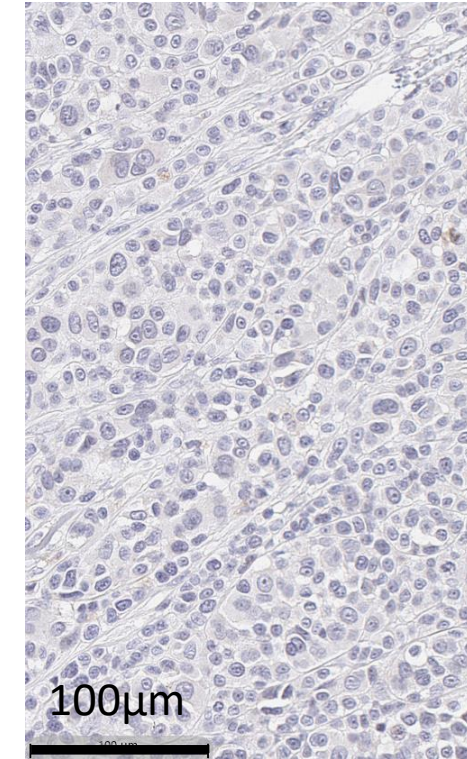
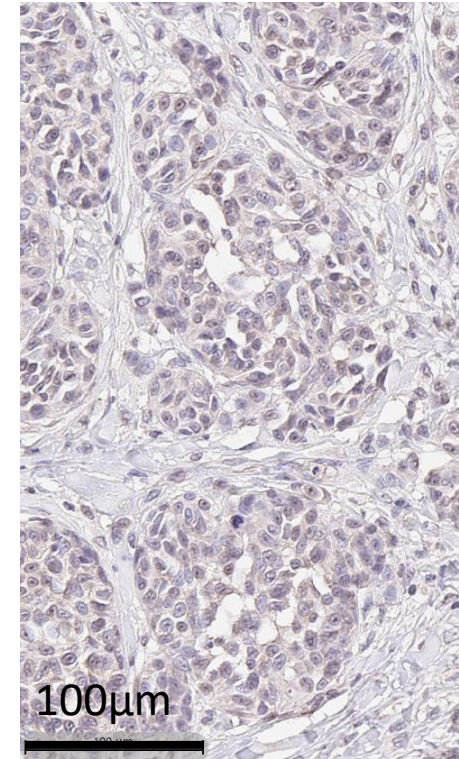
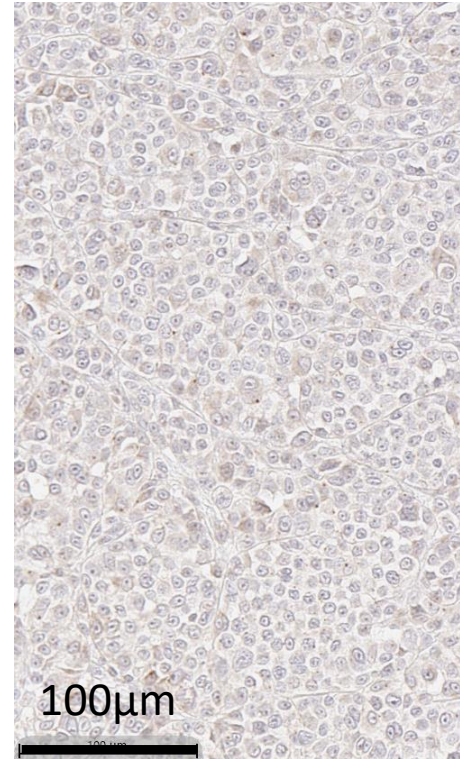
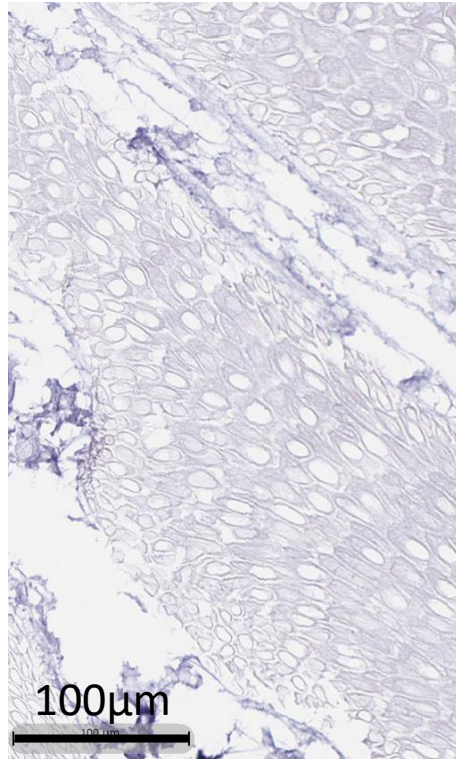
Q2020-064-S121  
Primary melanoma  
Slide: 128261, p53 $\beta$

TAp53 H-scores:  
Cytoplasm: N/A  
Nucleus: N/A

p53 $\beta$  H-scores:  
Cytoplasm: 0.00  
Nucleus: 2.15

$\Delta$ 133p53 H-scores:  
Cytoplasm: 0.05  
Nucleus: 0.64

$\Delta$ 40p53 H-scores:  
Cytoplasm: 0.20  
Nucleus: 1.64



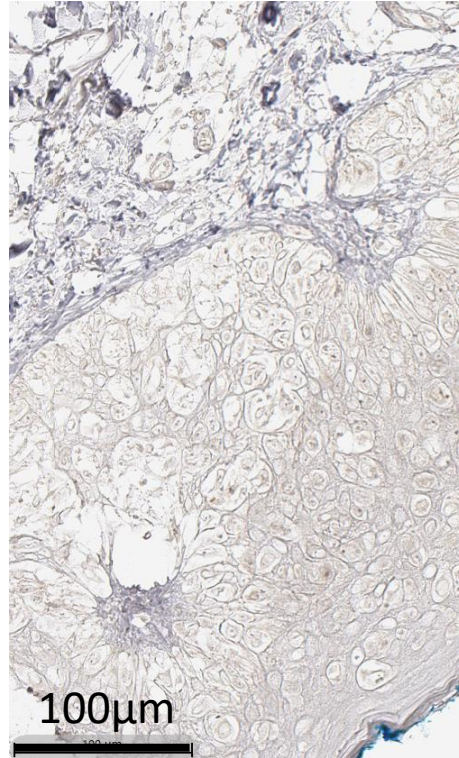
p53 $\beta$  nucleus low



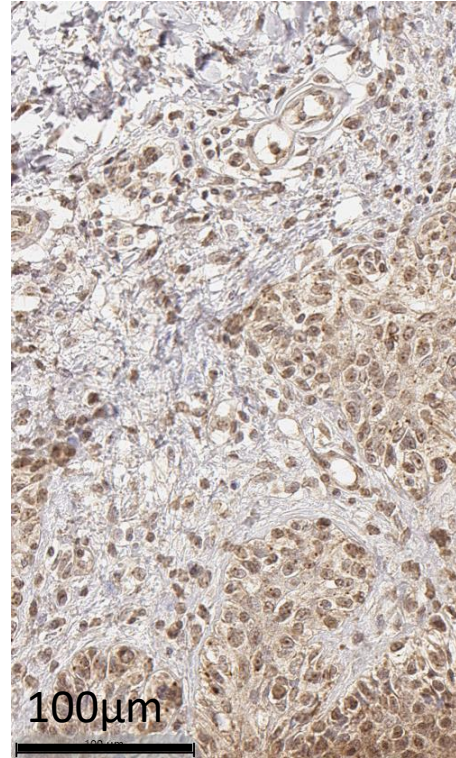
Q2020-064-S046  
Primary melanoma  
Slide: 126431, TAp53



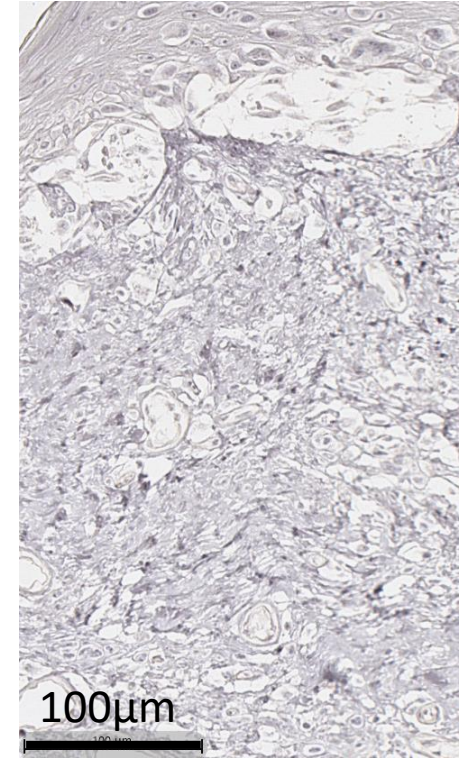
TAp53 H-scores:  
Cytoplasm: 2.46  
Nucleus: 22.16



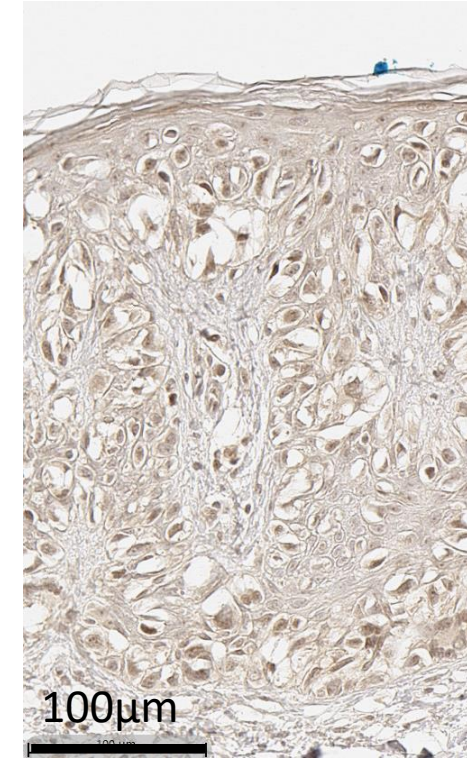
p53 $\beta$  H-scores:  
Cytoplasm: 36.80  
Nucleus: 96.27



$\Delta$ 133p53 H-scores:  
Cytoplasm: 0.15  
Nucleus: 0.97



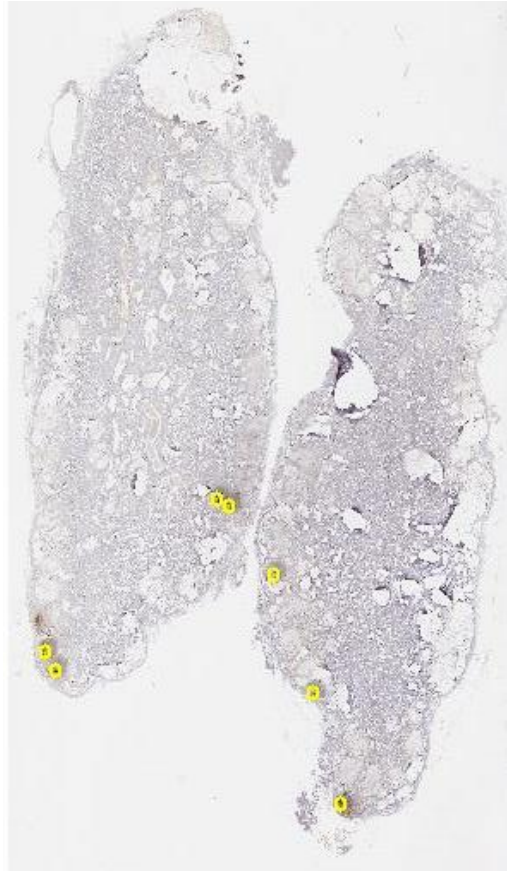
$\Delta$ 40p53 H-scores:  
Cytoplasm: 4.79  
Nucleus: 69.07



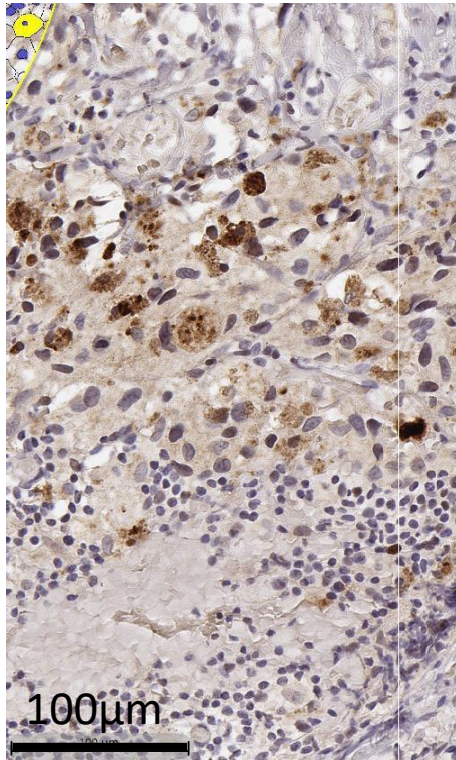
p53 $\beta$  nucleus moderate



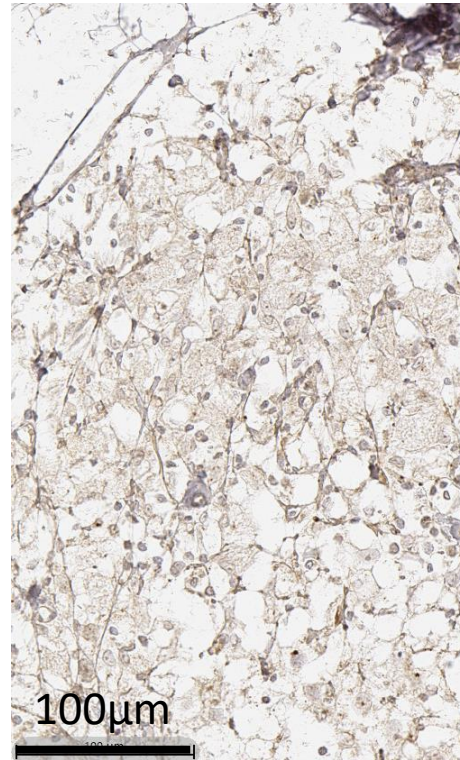
Q2020-064-S102  
Metastatic melanoma  
Lymph node  
Slide: 126468, TAp53



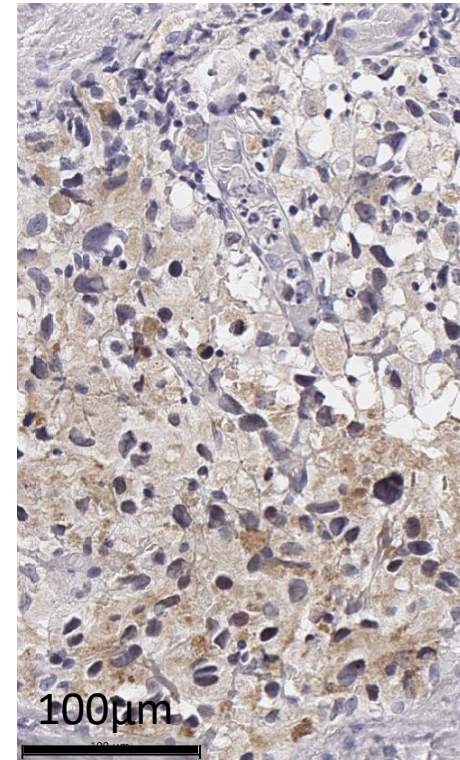
TAp53 H-scores:  
Cytoplasm: 51.32  
Nucleus: 107.13



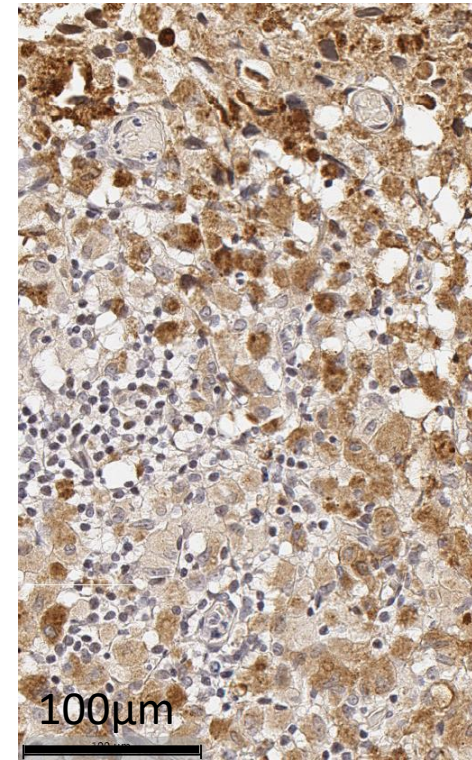
p53 $\beta$  H-scores:  
Cytoplasm: 4.96  
Nucleus: 71.73



$\Delta$ 133p53 H-scores:  
Cytoplasm: 29.99  
Nucleus: 54.22



$\Delta$ 40p53 H-scores:  
Cytoplasm: 4.47  
Nucleus: 54.32



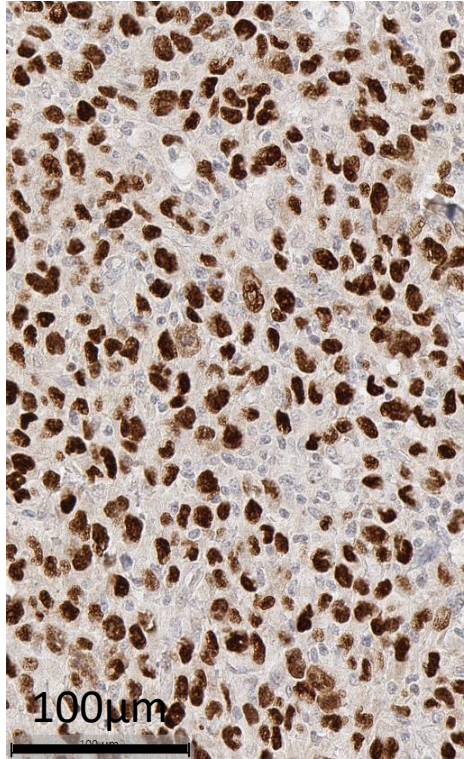
TAp53 cytoplasm  
moderate



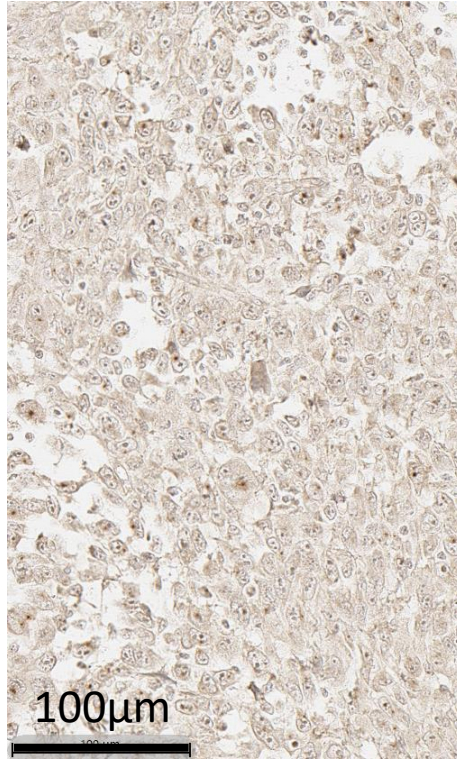
Q2020-064-S031  
Primary melanoma  
Slide: 126468, TAp53



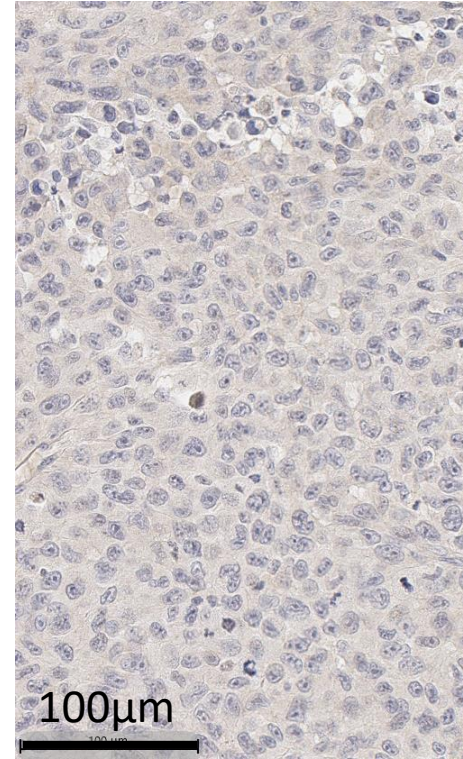
TAp53 H-scores:  
Cytoplasm: 129.29  
Nucleus: 223.78



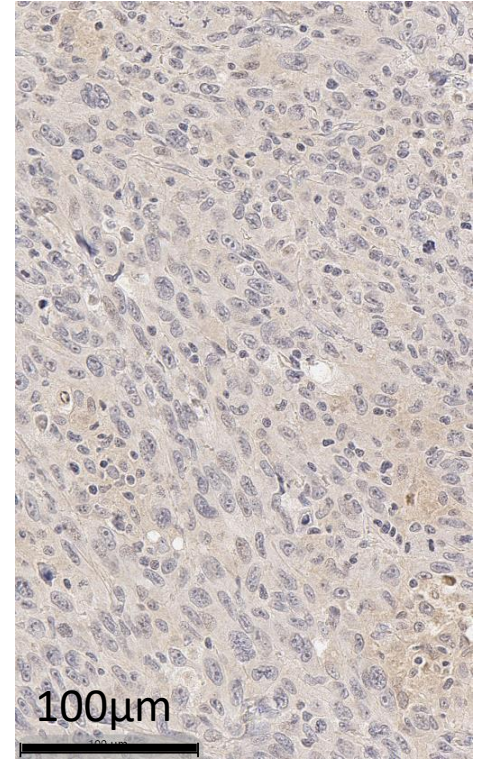
p53 $\beta$  H-scores:  
Cytoplasm: 2.35  
Nucleus: 95.96



$\Delta$ 133p53 H-scores:  
Cytoplasm: 0.09  
Nucleus: 3.37



$\Delta$ 40p53 H-scores:  
Cytoplasm: 0.12  
Nucleus: 6.65



TAp53 nucleus high



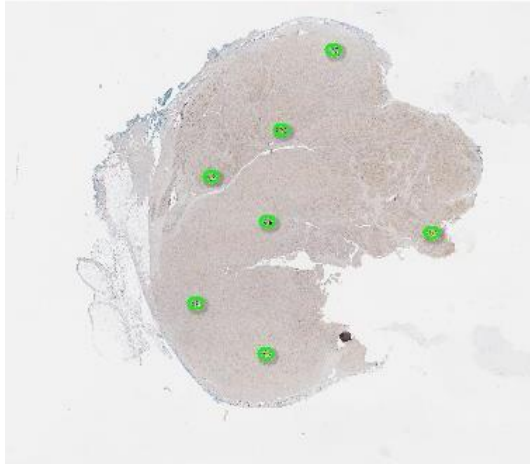
Q2020-064-S083  
Metastatic melanoma  
Skin  
Slide: 126454, TAp53

TAp53 H-scores:  
Cytoplasm: 17.84  
Nucleus: 89.14

p53 $\beta$  H-scores:  
Cytoplasm: 0.48  
Nucleus: 41.61

$\Delta$ 133p53 H-scores:  
Cytoplasm: 0.00  
Nucleus: 3.57

$\Delta$ 40p53 H-scores:  
Cytoplasm: 0.00  
Nucleus: 0.84



TAp53 nucleus  
moderate

