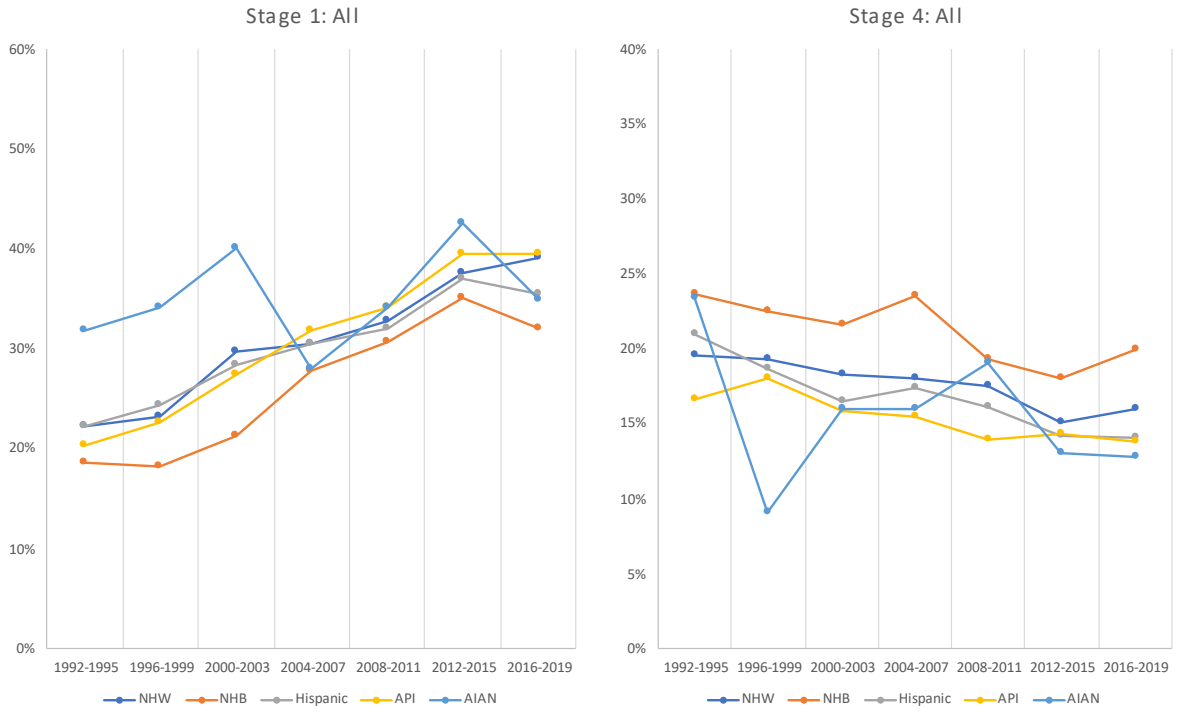


# Trends in hepatocellular carcinoma stage by racial-ethnic group in the United States, 1992-2019

Christian S. Alvarez, Jennifer Ruhl, Gretchen Flynn, Barry I. Graubard, Katherine A.  
McGlynn

Fig. S1.....	2
Table S1.....	3

**Supplementary Figure 1: Stage 1 vs Stage 4 HCC Trends By Racial-Ethnic Group in the U.S., 1992-2019**



Abbreviations: NonHispanic White (NHW); Non-Hispanic Black (NHB); Asian/Pacific Islander (API); American Indian/Alaska Native (AI/AN)

**Supplementary Table 1.** Age-standardized rates and 95% CIs of hepatocellular carcinomas in the U.S.: SEER 12 registries, 1992 through 2019

	1992			2019			Joinpoints			APC (%) Trends <sup>a</sup>				AAPC	
	Cases	ASR	95%CI	Cases	ASR	95%CI	1	2	3	1	2	3	4	%	95% CI
All	849	3.08	(2.87, 3.29)	2,972	6.04	(5.82, 6.26)	2009	2015	-	4.7*	0.9	-4.6*	-	2.4*	(1.9, 2.9)
Sex															
Men	614	5.03	(4.63, 5.45)	2,190	9.53	(9.12, 9.95)	2011	2016	-	4.4*	-1.0	-5.4*	-	2.3*	(1.7, 2.8)
Women	235	1.53	(1.34, 1.74)	782	3.00	(2.79, 3.23)	2013	-	-	3.6*	-2.8*	-	-	2.1*	(1.5, 2.8)
Race-ethnicity <sup>b</sup>															
Non-Hispanic White	389	1.89	(1.71, 2.09)	1,276	4.26	(4.02, 4.51)	2004	2008	2013	4.2*	7.4*	3.4*	-2.7*	2.9*	(2.1, 3.7)
Non-Hispanic Black	69	3.81	(2.94, 4.84)	294	7.31	(6.47, 8.22)	2009	-	-	5.4*	-1.0	-	-	3.0*	(2.1, 3.9)
Hispanic	124	4.87	(4.01, 5.85)	721	9.33	(8.64, 10.07)	2012	-	-	4.1*	-2.9*	-	-	2.3*	(1.7, 2.8)
Asian/Pacific Islander	260	10.94	(9.60, 12.41)	601	8.18	(7.53, 8.87)	2010	-	-	-	1.0*	-4.6*	-	-0.9*	(-1.5, -0.3)
American Indian/Alaska Native	6	3.26	(1.03, 7.25)	61	12.12	(9.17, 15.72)	-	-	-	4.0*	-	-	-	4.0*	(2.6, 5.3)

Abbreviations: 95% CI, 95% confidence interval; AAPC, average annual percent change; APC, annual percent change; ASR, age-standardized incidence rate; SEER, Surveillance, Epidemiology and End Results.

<sup>a</sup>Asterisk denotes that the trend was statistically different from zero at alpha 0.05 level.

<sup>b</sup>Cases may not add up to total due to unknown race-ethnicity categories.