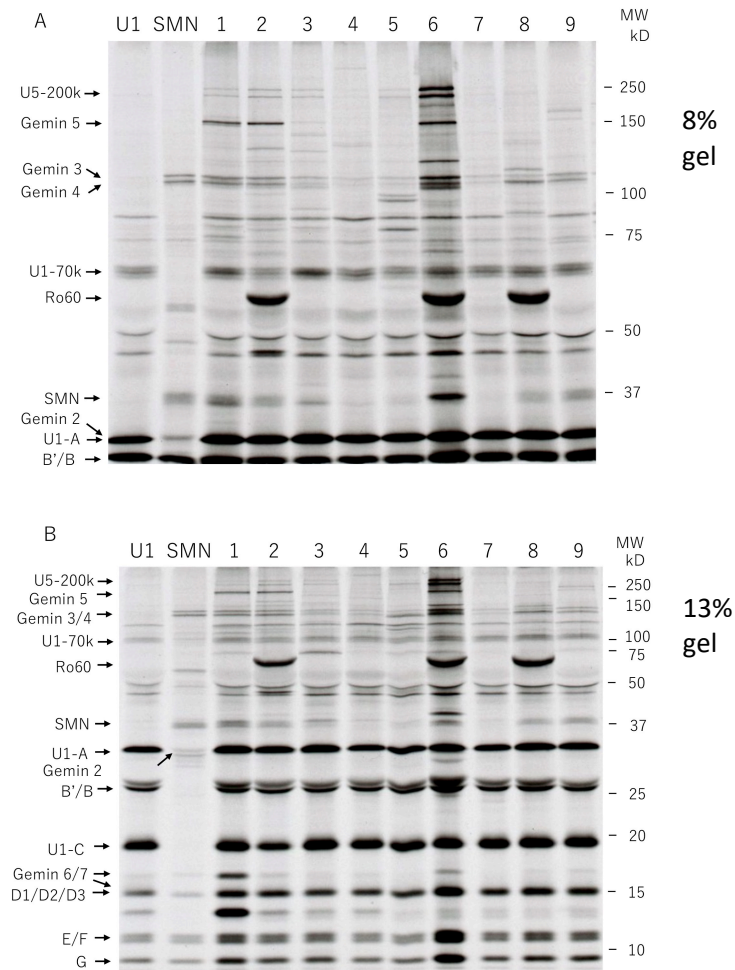


Supplemental Figure 1. Representative immunoprecipitation in 9 patients (lanes 1-9) with anti-U1RNP+ MCTD and myositis, including 4 patients with lower GI involvement.⁶

Samples in lanes 1,2,6,8,9 had high-titer (>4000 MFI) anti-SMN aAbs. (Panel A 8% gel; Panel B 13% gel)



aAbs: autoantibodies; GI: gastrointestinal; MCTD: mixed connective tissue disease; MFI: mean fluorescence intensity; RNP: ribonucleoprotein; SMN: survival of motor neuron