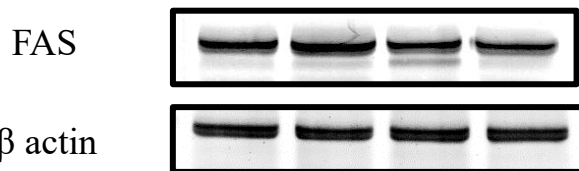
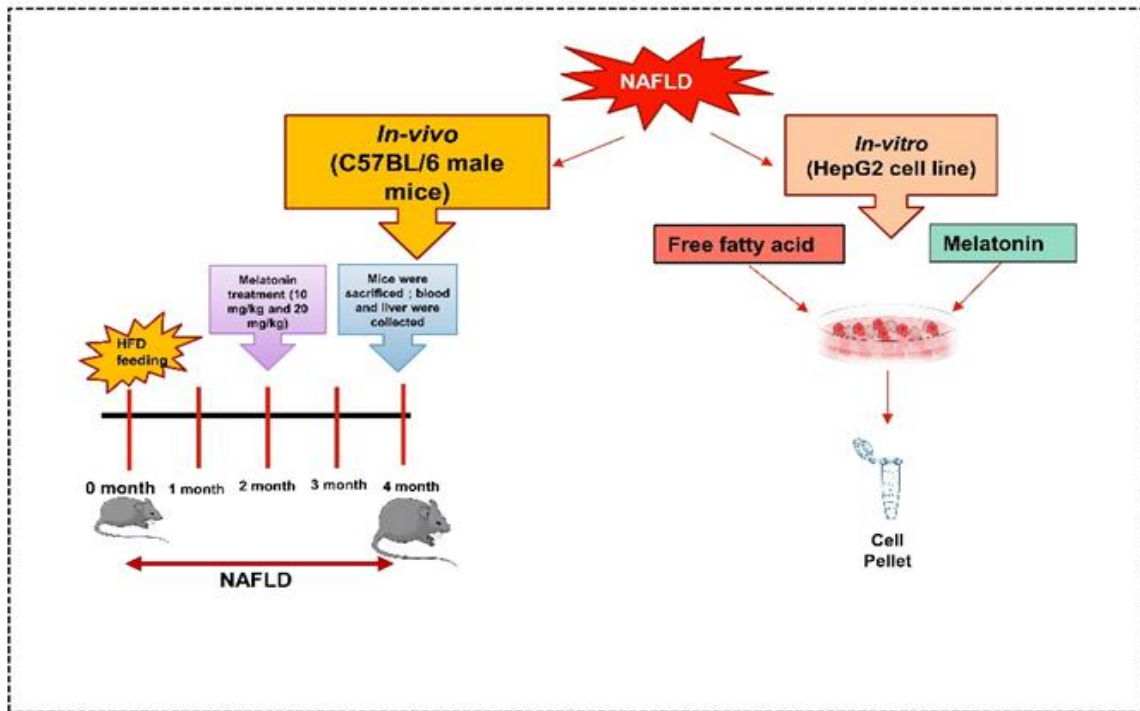
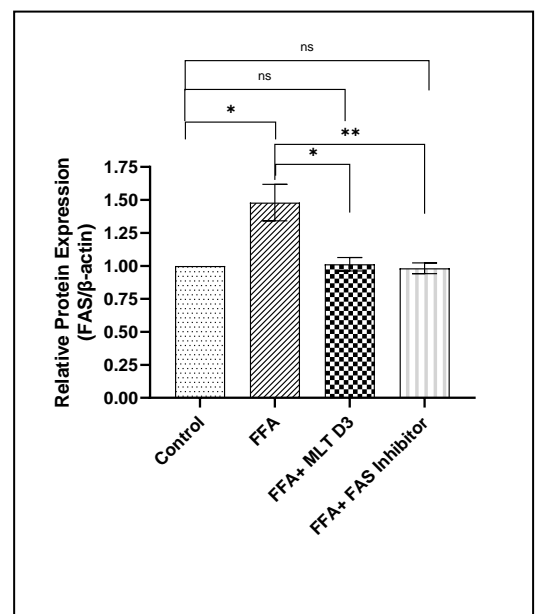


Supplementary Information:

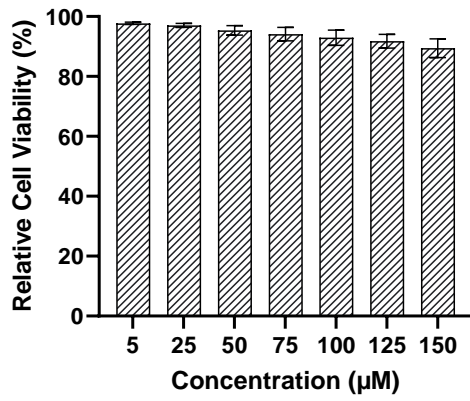
Supplementary Figure 1 : Establishment of In-vivo and in- vitro model and MLT treatment design.



FFA	-	+	+	+
MLT D3	-	-	+	-
FAS Inhibitor	-	-	-	+



Supplementary Figure 2: Bar Diagram representing relative viability of HepG2 cells upon Melatonin treatment.

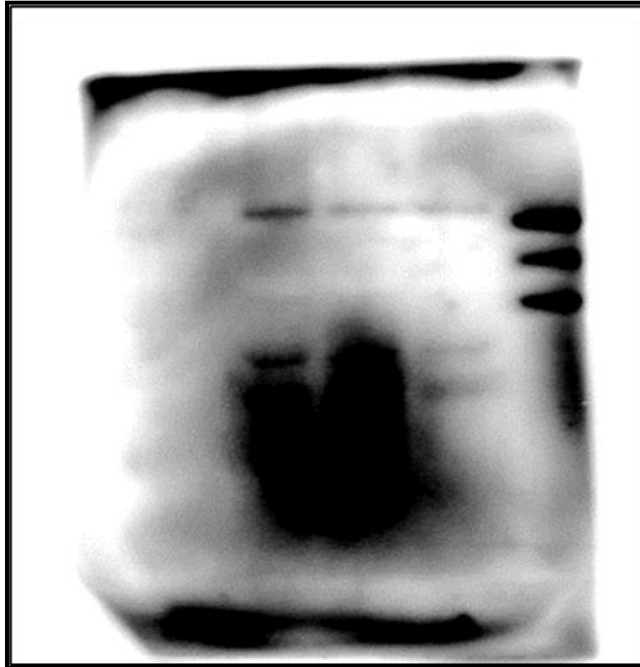


Full western Blot images of “Supplementary Figure 1”

Raw Western Blot Images:

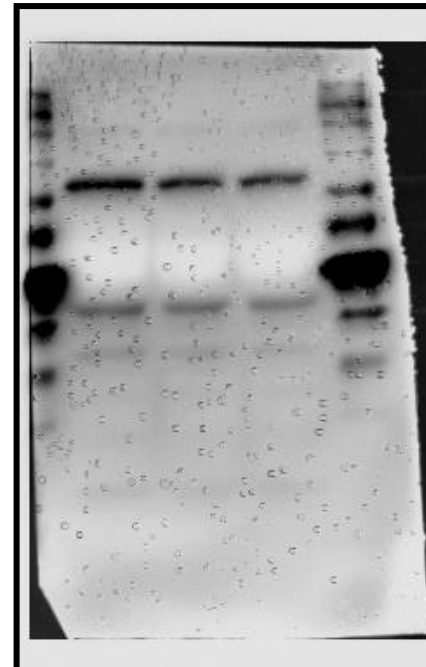
Figure 1

(D)



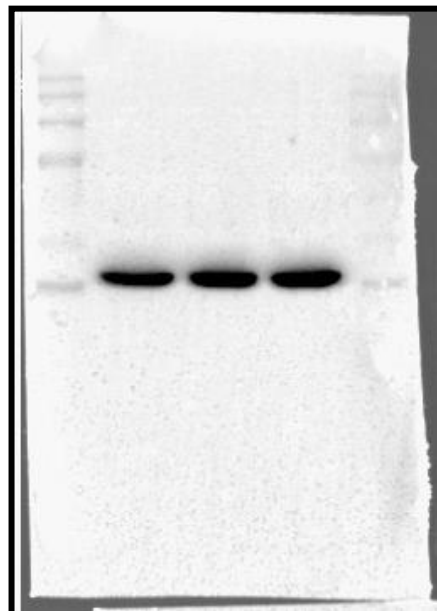
SLC7A11

55kDa



GPX4

22kDa

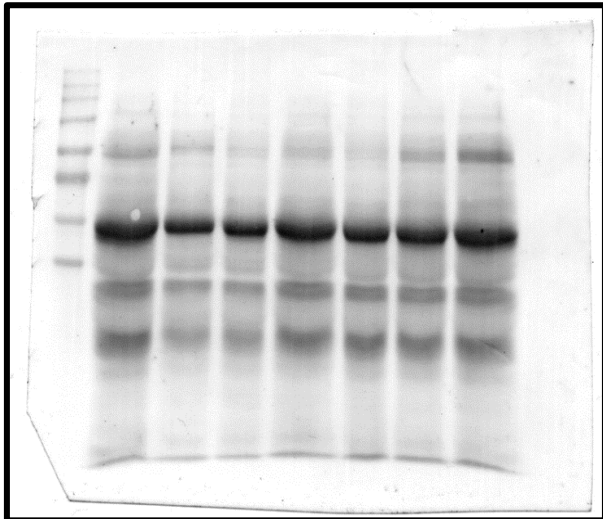


β actin

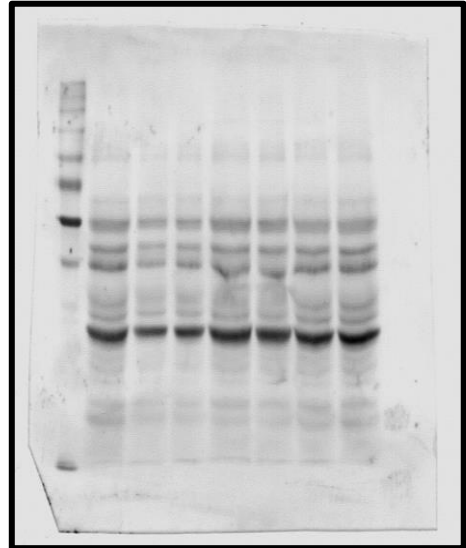
42kDa

Figure 2

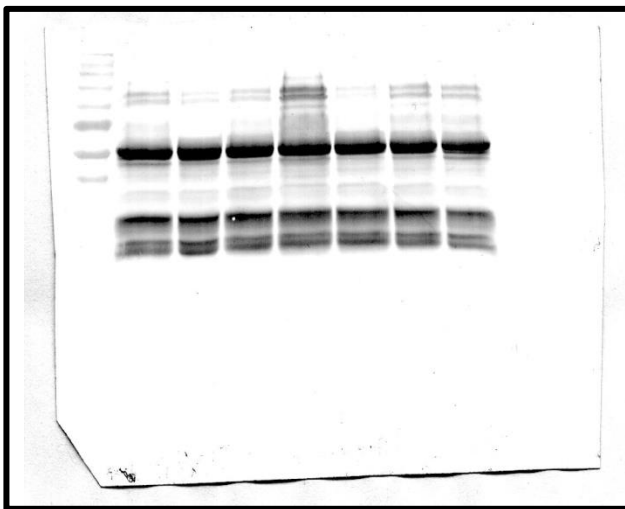
(C)



SLC7A11
55kDa



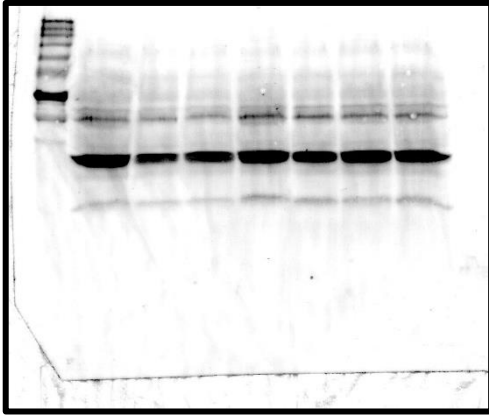
GPX4
22 kDa



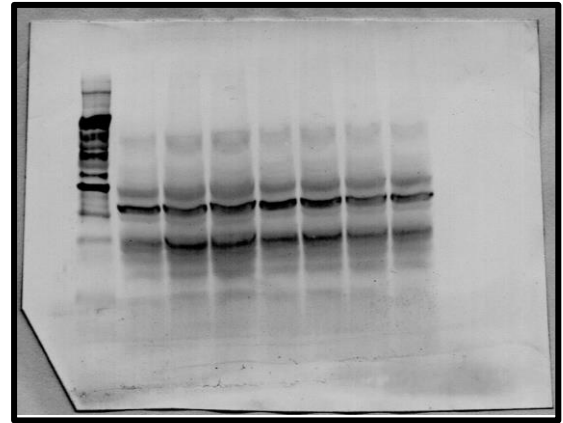
β actin
42 kDa

Figure 3

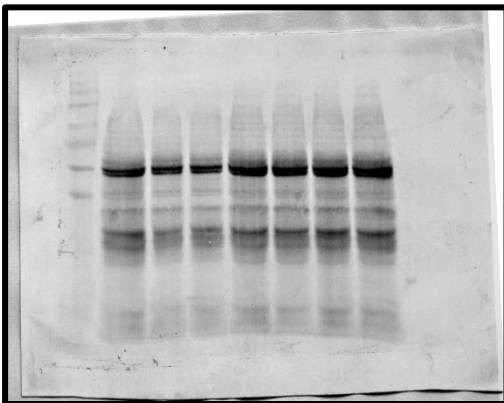
(F)



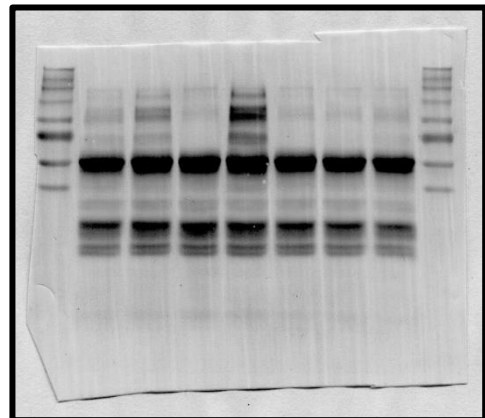
HO - 1
28 kDa



Keap 1
69 kDa



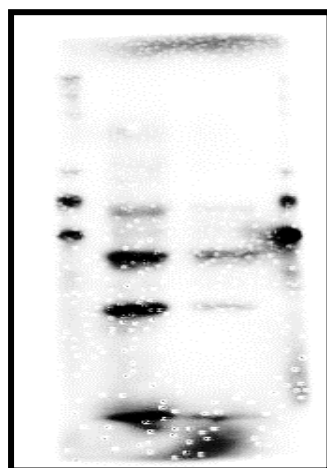
Nrf2
110 kDa



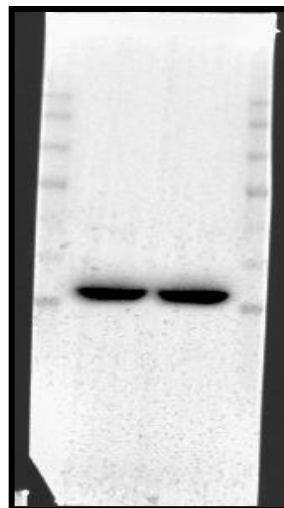
β actin
42 kDa

Figure 4

(A)

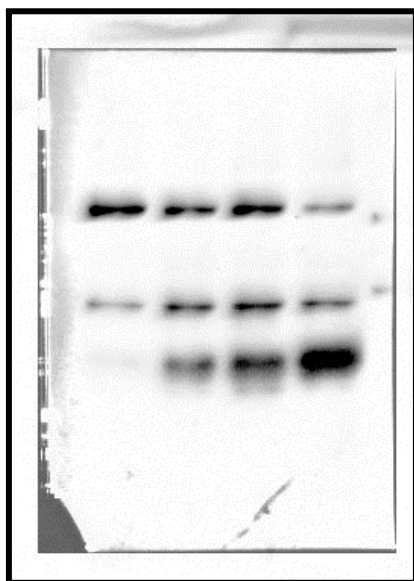


Nrf2
110 kDa



β actin
42 kDa

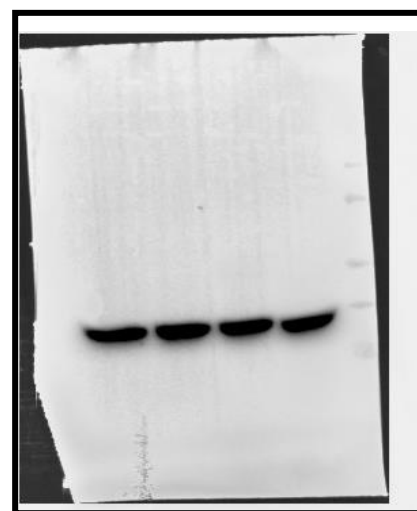
(C)



SLC7A11
55 kDa



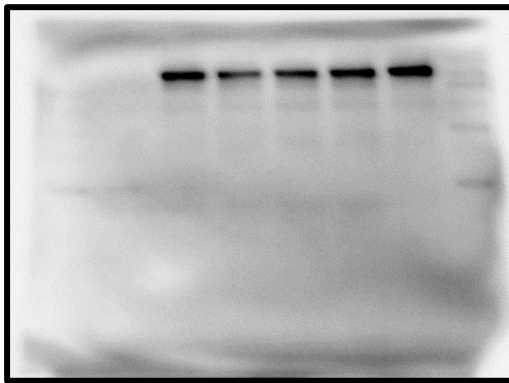
GPX4
22 kDa



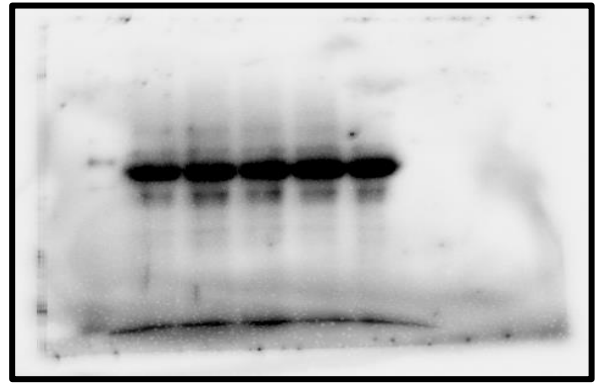
42 kDa

Figure 6

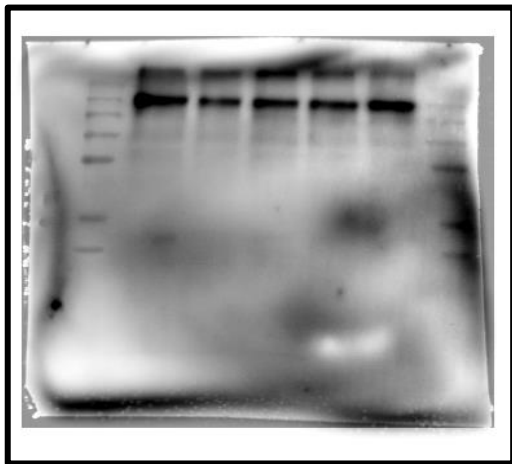
(B)



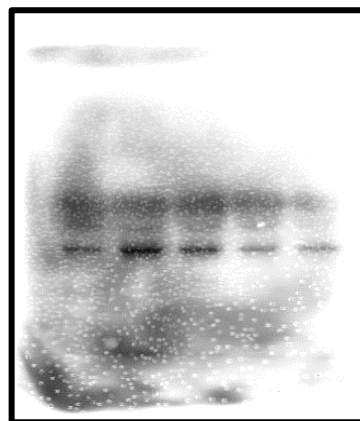
p AMPK α
62 kDa



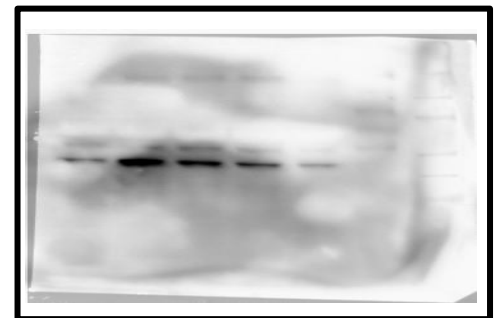
AMPK α
62 kDa



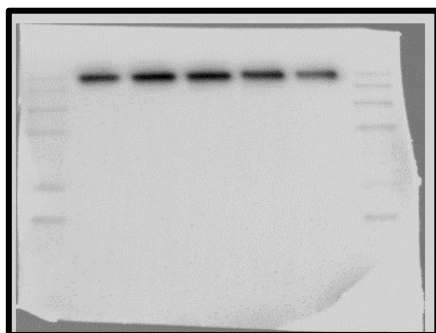
PPAR α
52 kDa



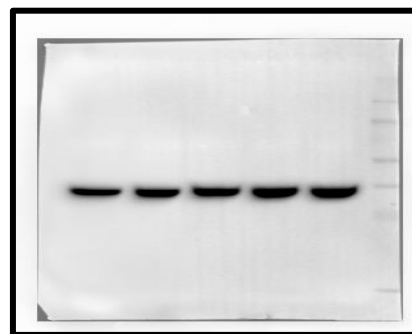
PPAR γ
58 kDa



SREBP1c
150 kDa



FAS



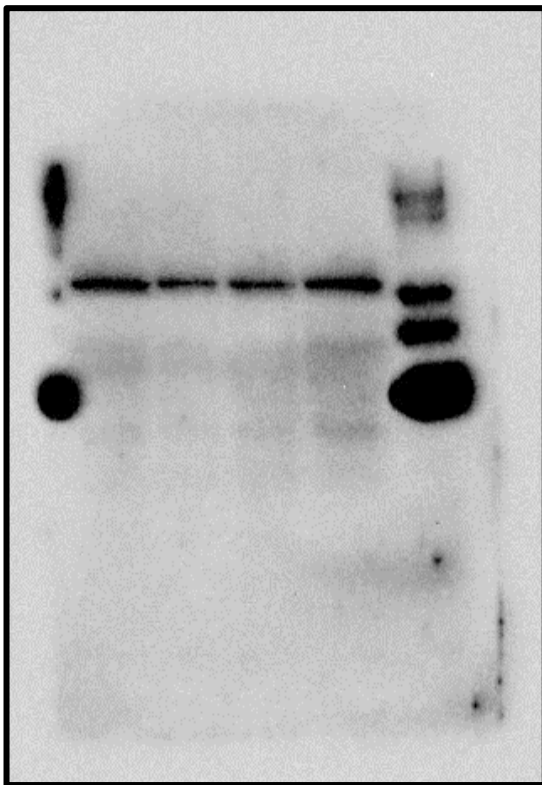
β actin

228kDa

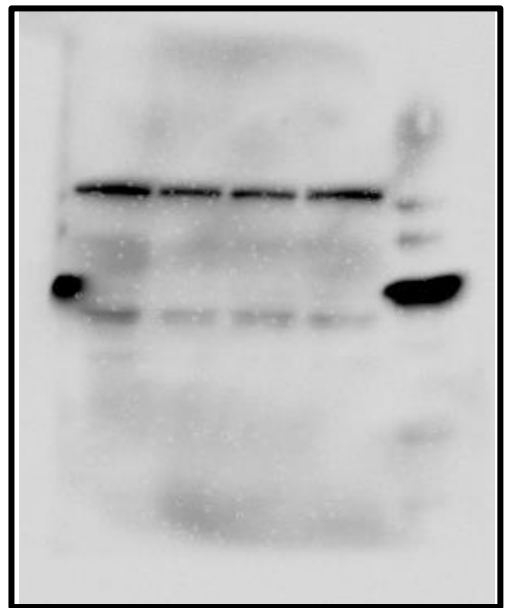
42 kDa

Figure : 8

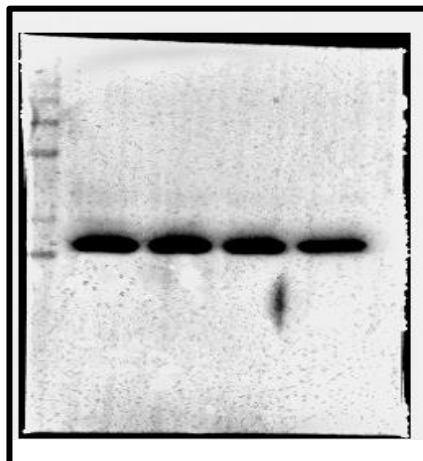
(C)



SLC7A11
55 kDa



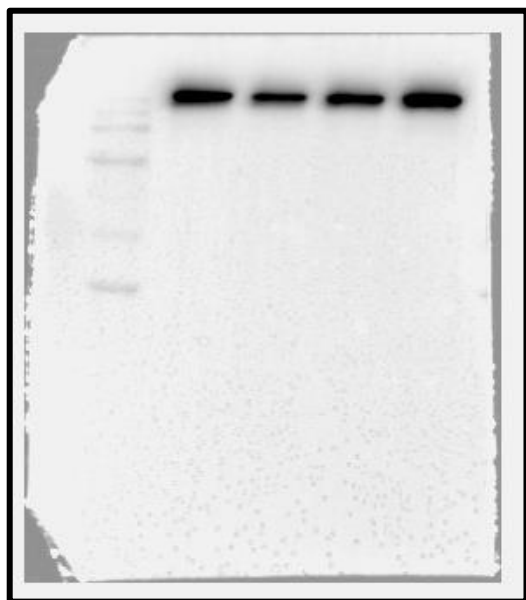
GPX4
22 kDa



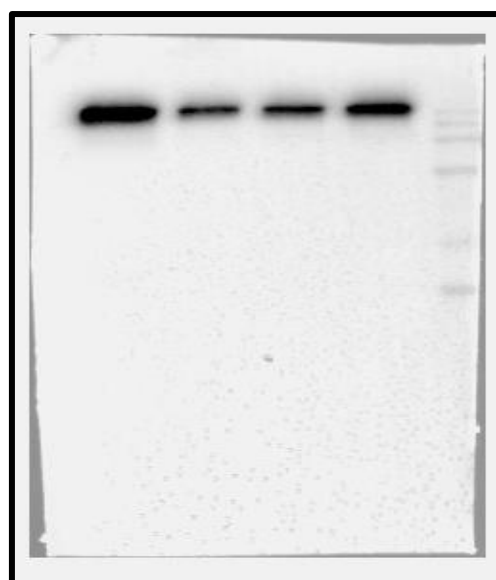
β actin
42 kDa

Figure: 9

(A)



Nrf 2
110 kDa



HO 1
28 kDa

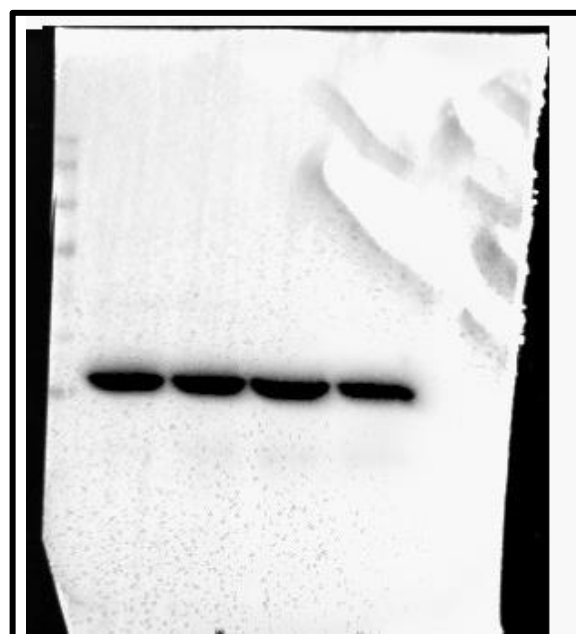
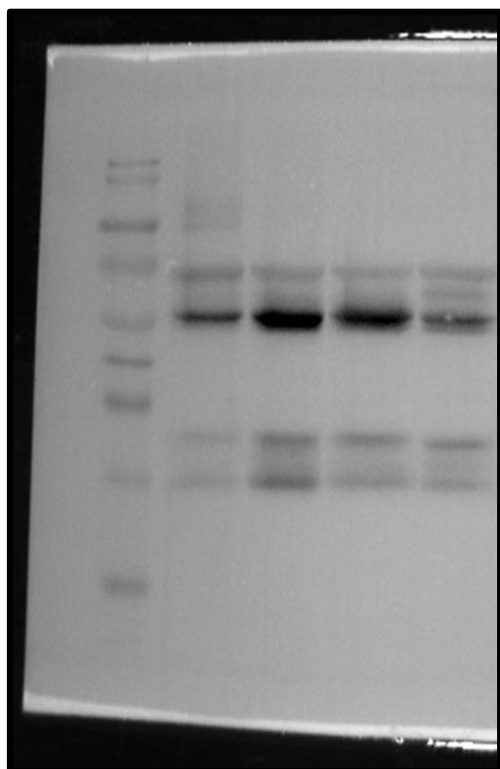


Figure : 10

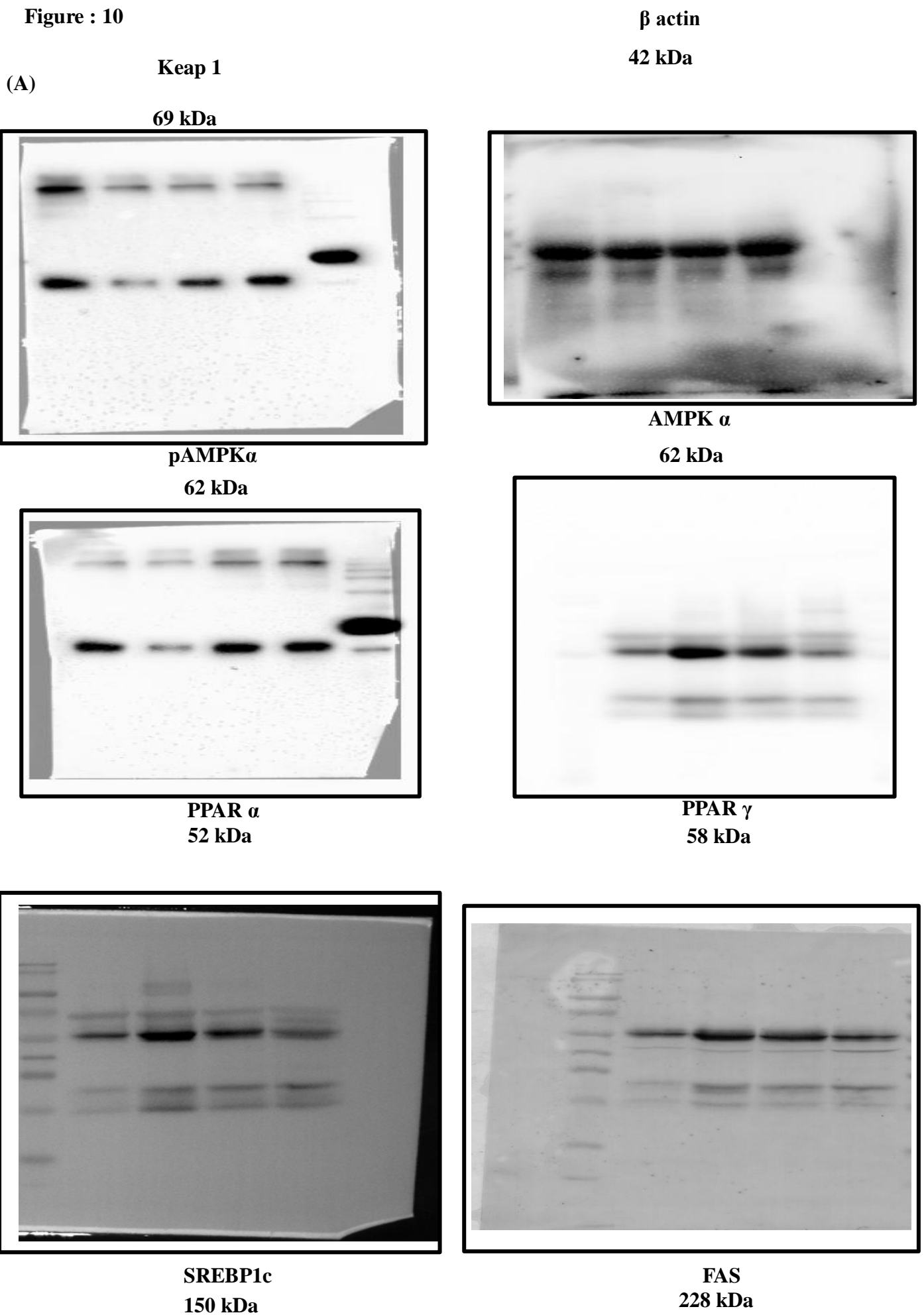
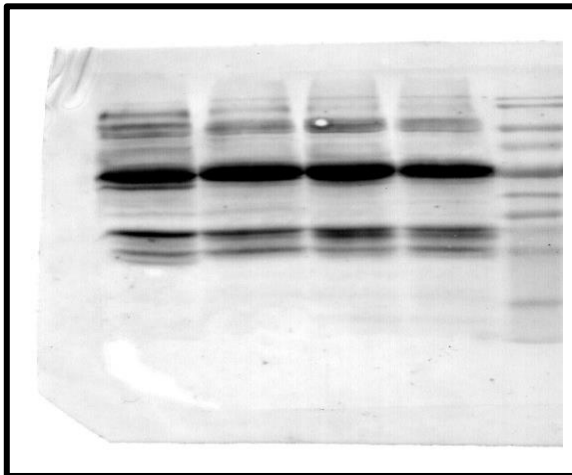


Figure : 10

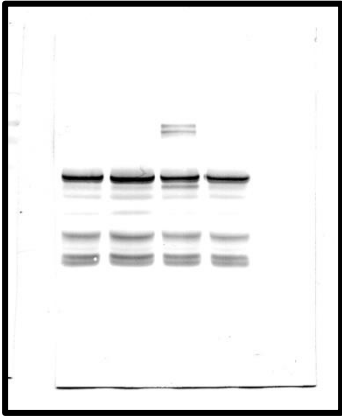
(A)



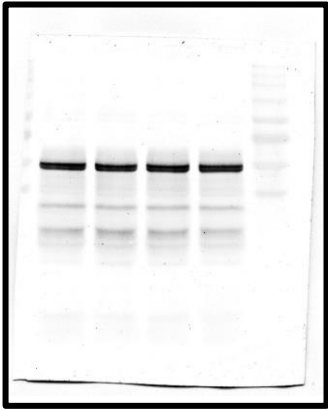
β actin

42 kDa

Supplementary Figure 1:



FAS



β actin