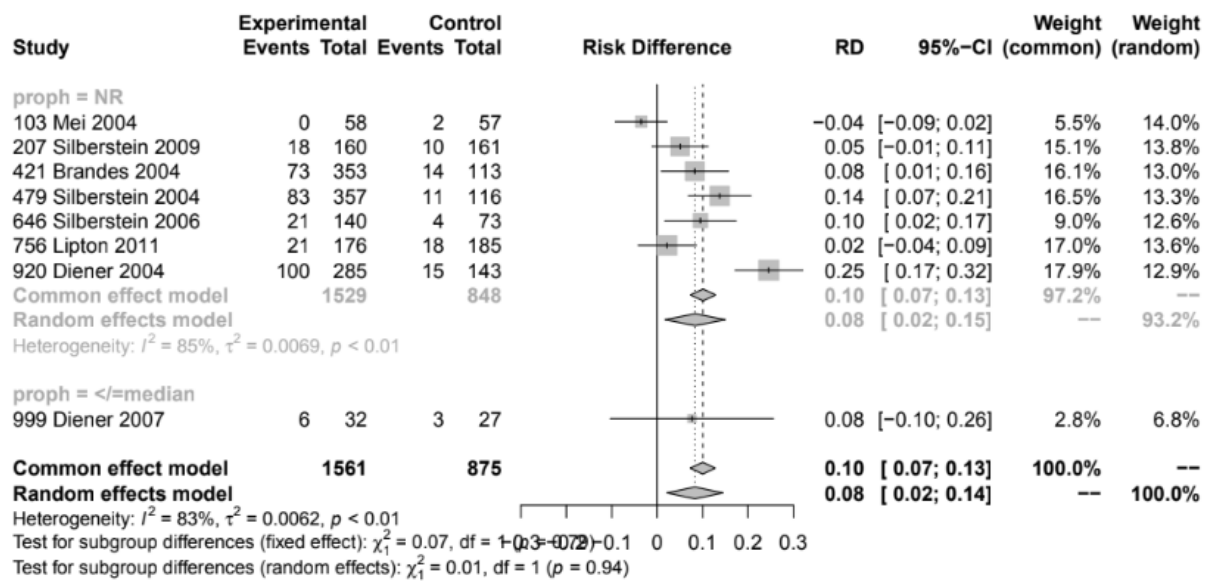
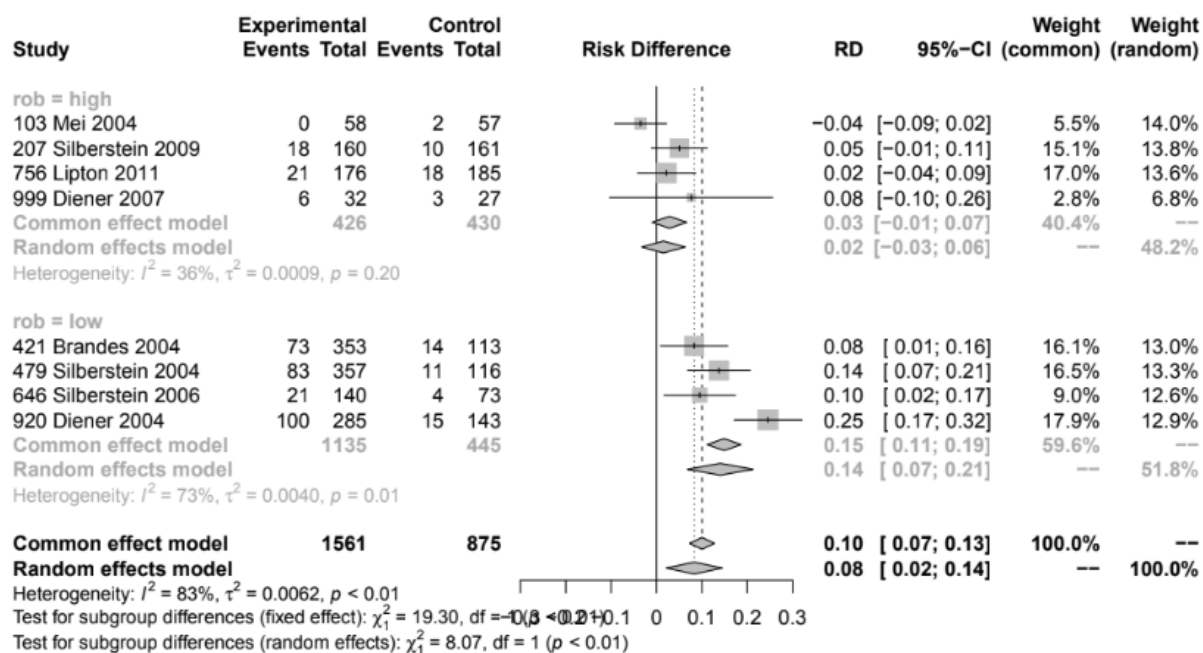


Supplementary Material 4.1: Subgroup analysis for adverse events leading to discontinuation based on the number of monthly migraine days at baseline (below vs. above the median value). NR = not reported.



Supplementary Material 4.2: Subgroup analysis for adverse events leading to discontinuation based on the proportion of patients that had previously used prophylactic therapy (below vs. above the median value). NR = not reported.



Supplementary Material 4.3: Subgroup analysis for adverse events leading to discontinuation based on the risk of bias (high vs. low). Rob = risk of bias.