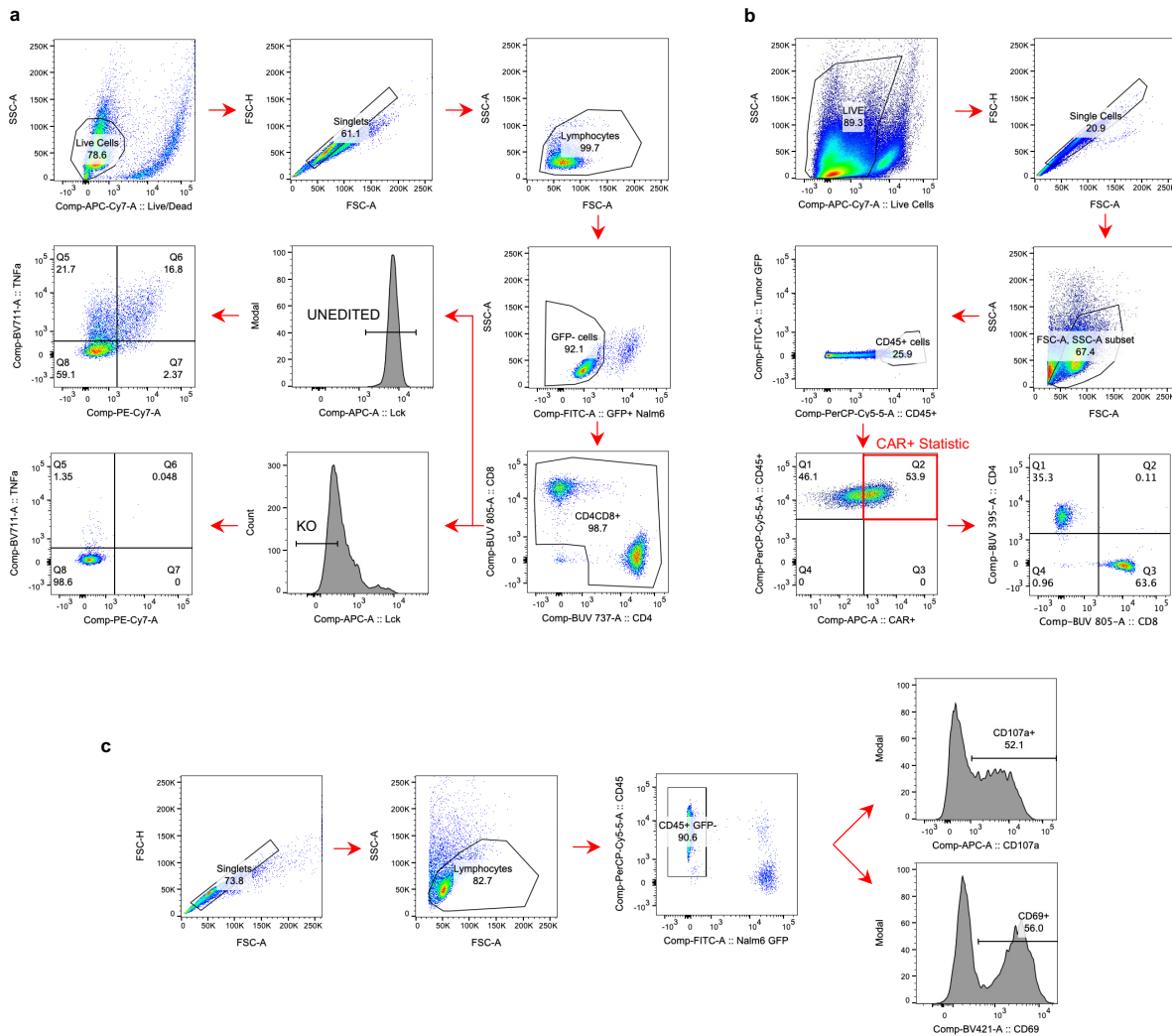


Supplementary information

**Co-opting signalling molecules enables
logic-gated control of CAR T cells**

In the format provided by the
authors and unedited

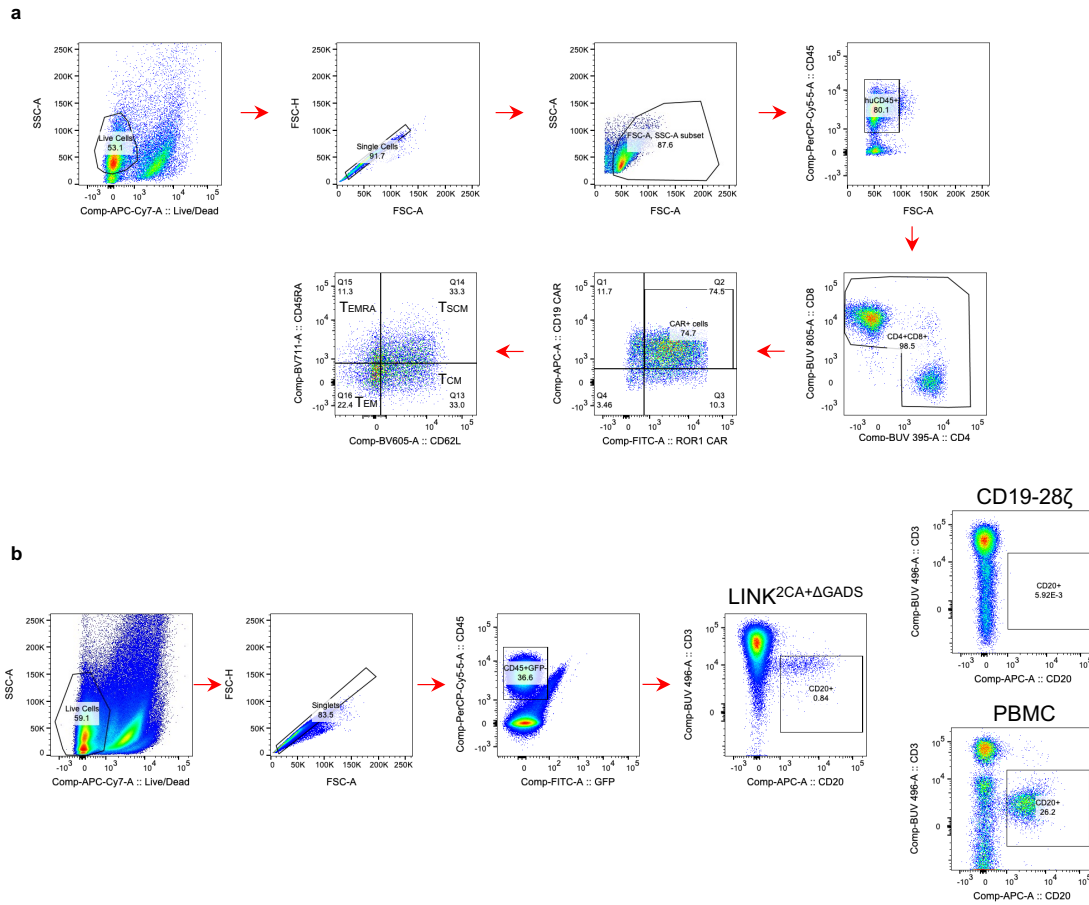
Supplementary Figure 1 – Gating strategies for flow cytometric data



a, Intracellular cytokine staining of CRISPR/Cas9-edited CAR T Cells (Figures 1c-e, 3h-i, 4h-i; Extended Data Figures 1c, e-h, 5e-f, 6i-j).

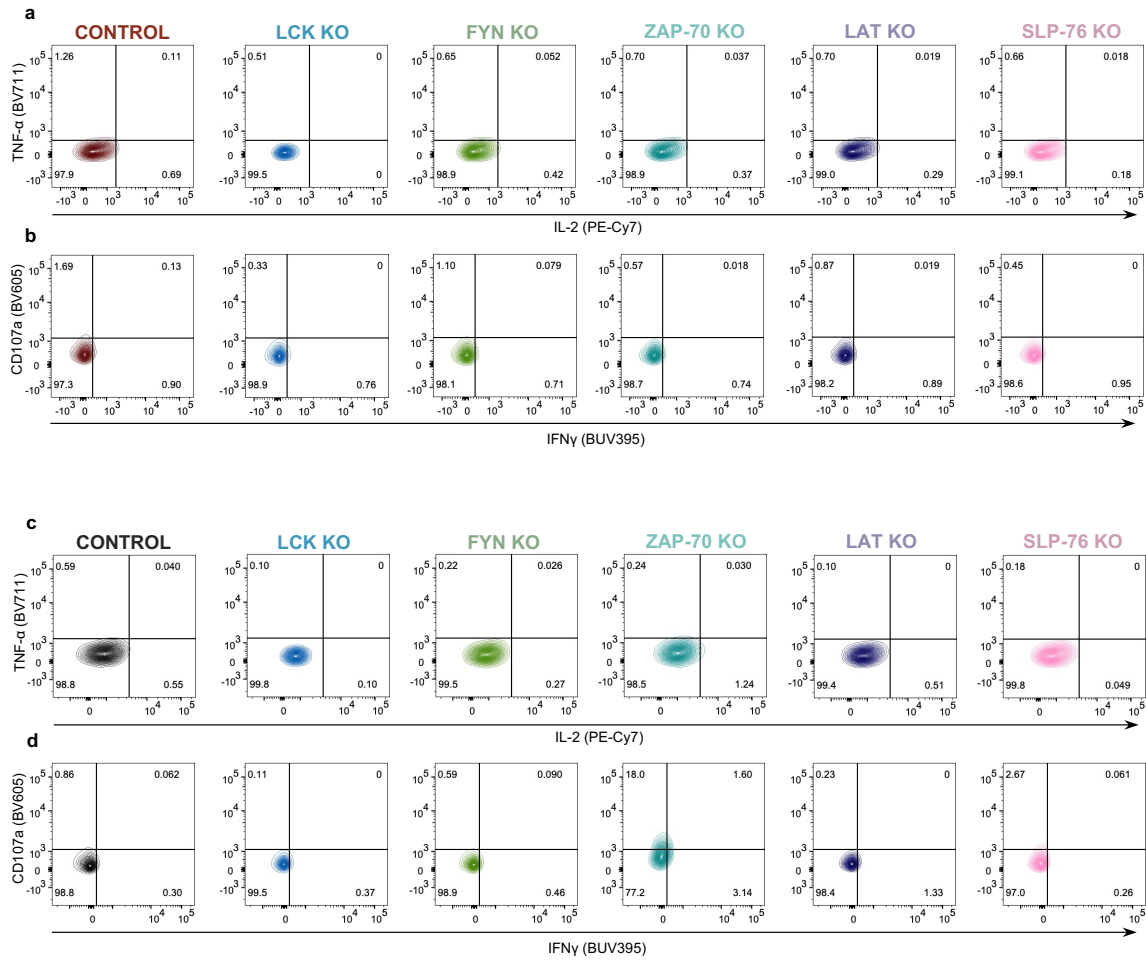
b, Detection of CAR⁺ T cells isolated from murine spleen and bone marrow tissue (Figure 3e; Extended Data Figure 2e-f, 8i).

c, LINK CAR T cell activation assays measuring CD107a and CD69 (Figure 5d; Extended Data Figure 7c).



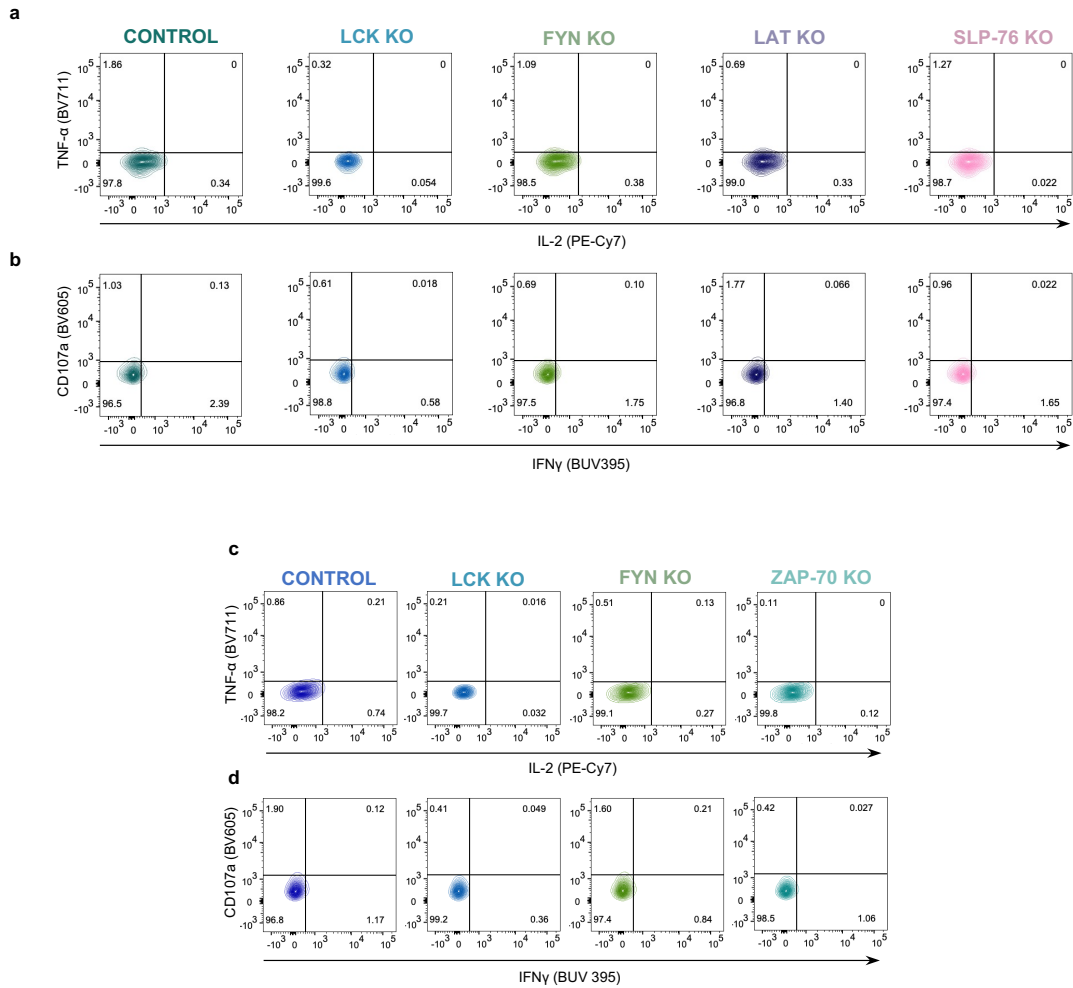
a, Detection of CAR⁺ memory T cells isolated from murine spleen tissue (Extended Data Figure 8j-k).

b, Detection of CD20⁺ human B cells isolated from murine spleen tissue (Extended Data Figure 9e-h).



a-b, Flow cytometric plots of TNF- α x IL-2 (**a**) and CD107a x IFN γ (**b**) in unstimulated unedited and edited CD19-4-1BB ζ CAR T cells. (Figure 1c-e; Extended Data Figure 1c)

c-d, Flow cytometric plots of TNF- α x IL-2 (**c**) and CD107a x IFN γ (**d**) in unstimulated unedited and edited CD19-28 ζ CAR T cells. (Extended Data Figures 1e-h)



a-b, Flow cytometric plots of TNF- α x IL-2 (**a**) and CD107a x IFN γ (**b**) in unstimulated unedited and edited B7-H3-ZAP-70^{KIDB} CAR T cells. (Figure 3h-i; Extended Data Figure 5e-f)
c-d, Flow cytometric plots of TNF- α x IL-2 (**c**) and CD107a x IFN γ (**d**) in unstimulated unedited and edited LINK CAR T cells. (Figure 4h-i; Extended Data Figure 6i-j)