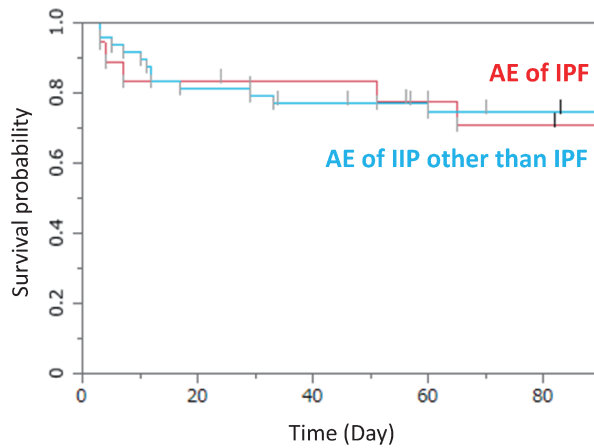


SUPPLEMENTARY MATERIAL



Supplement Fig. Survival curves for patients with AE of IIP other than IPF and AE of IPF. The clinical characteristics including age, serum LDH, serum KL-6, PaO₂/FiO₂ ratio, CCIS, and HRCT scores had no significant differences between AE of IIP other than IPF and AE of IPF and the survival curves was also similar ($P = 0.808$).

AE: acute exacerbation

CCIS: Charlson Comorbidity Index score

HRCT: high-resolution computed tomography

IIP: idiopathic interstitial pneumonia

IPF: idiopathic pulmonary fibrosis

KL-6: Krebs von den Lungen-6

LDH: lactate dehydrogenase

PaO₂/FiO₂: partial pressure of oxygen in arterial blood/fraction of inspired oxygen