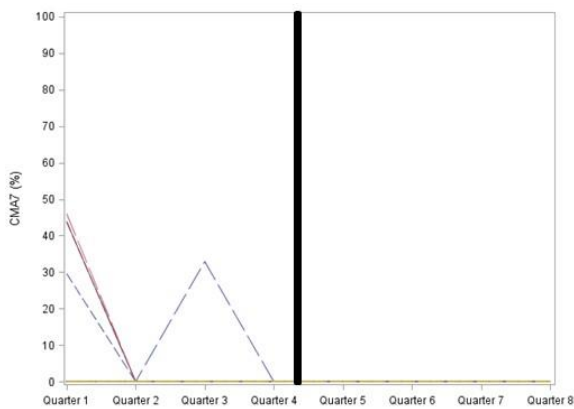
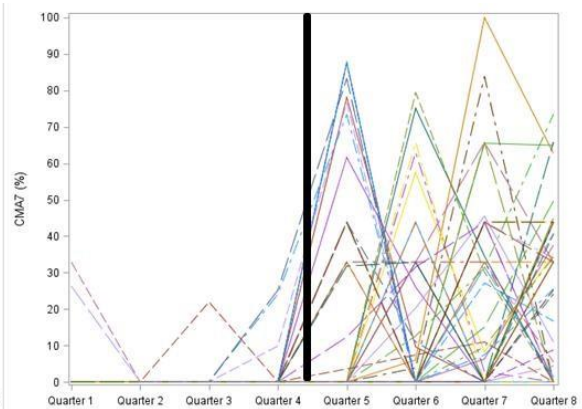


Multimedia Appendix 2. Use of inhaled corticosteroid trajectories before and after asthma-related hospitalization by group before asthma-related hospitalization among children (n=447).

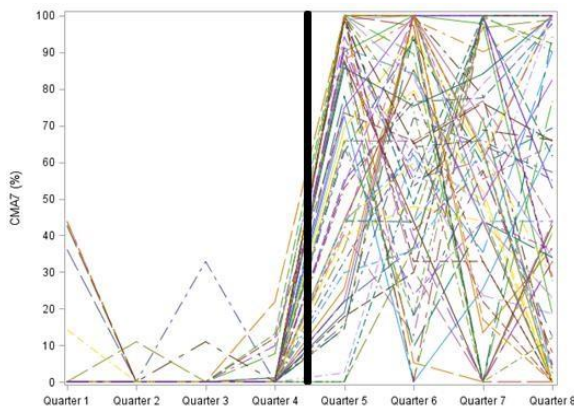
Group before hospitalisation: non-users



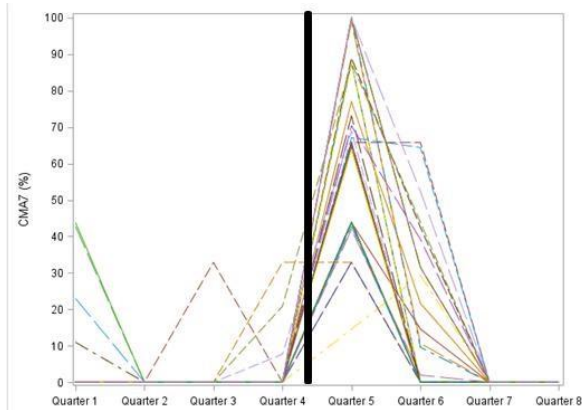
From no use to no use



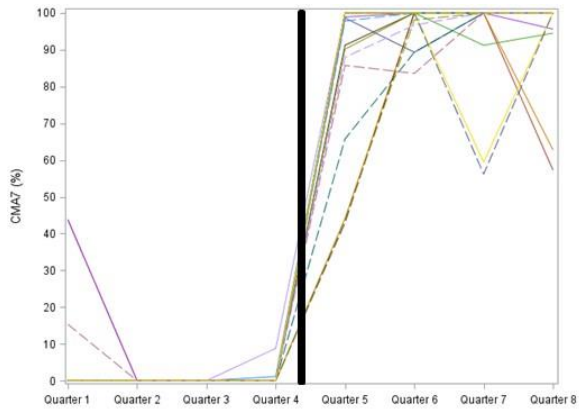
From no use to mild use



From no use to high use

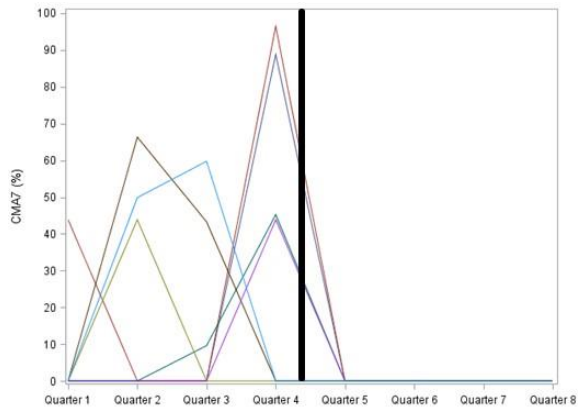


From no use to decreasing use

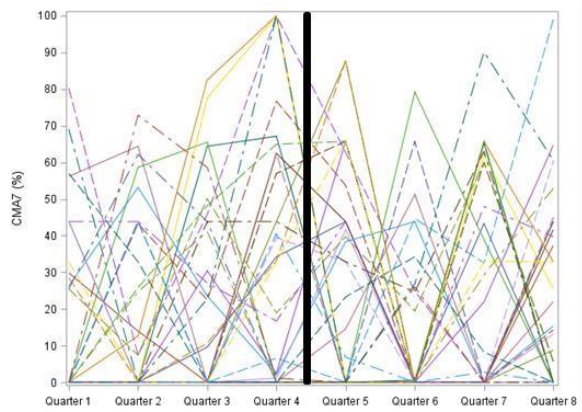


From no use to very high use

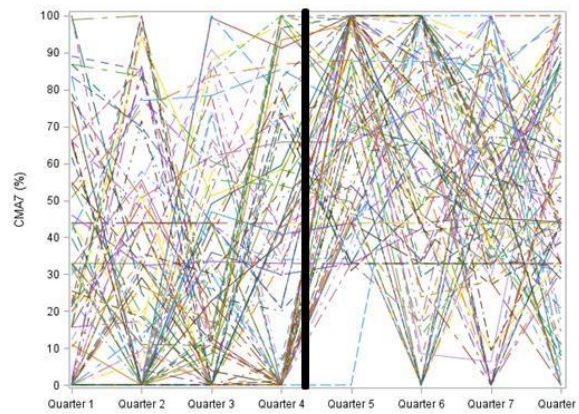
Group before hospitalisation: mild use



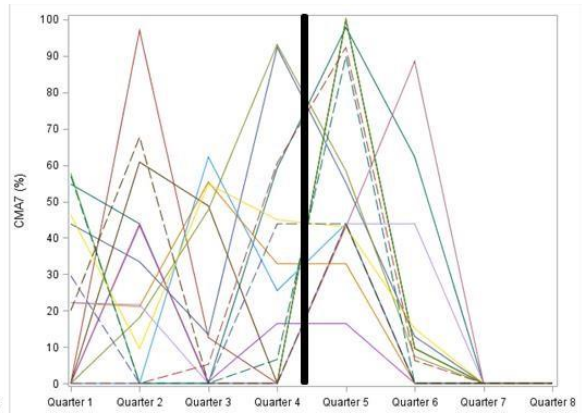
From mild use to no use



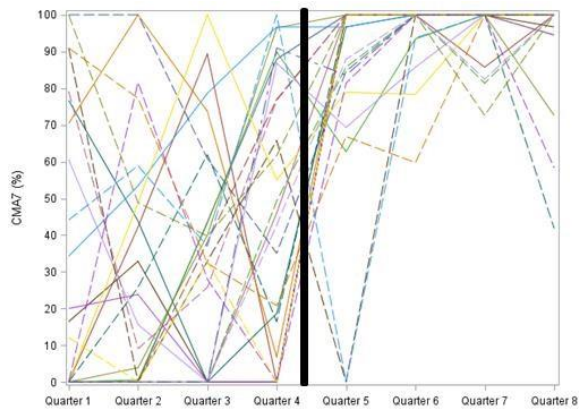
From mild use to mild use



From mild use to high use

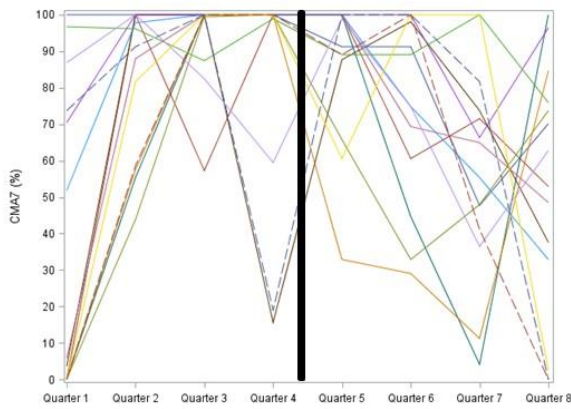


From mild use to decreasing use

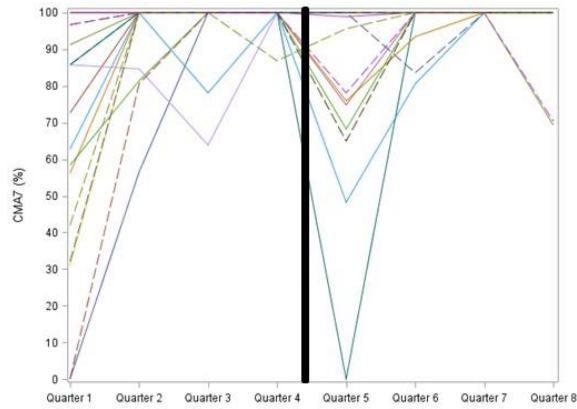


From mild use to very high use

Group before hospitalisation: high use



From high use to high use



From high use to very high use

No patient switched from high use to no use, decreasing use or mild use, so there are only 2 graphs in this group.

Note: In these graphs, one line represents one patient