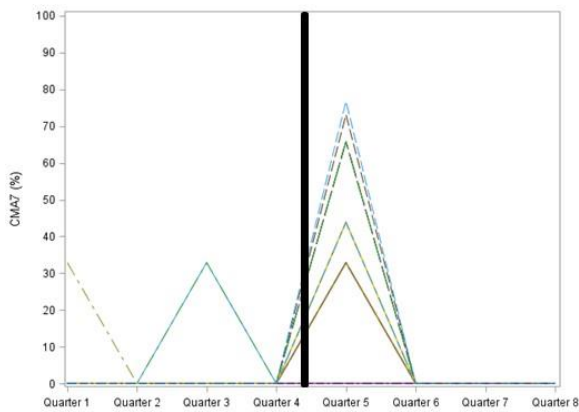
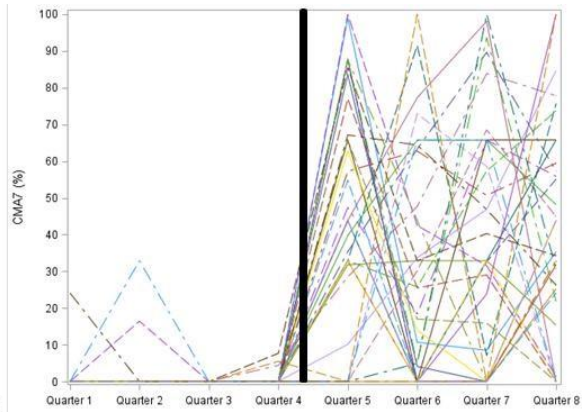


Multimedia Appendix 3. Use of inhaled corticosteroid trajectories before and after asthma-related hospitalization by group before asthma-related hospitalization among teens/adults (n=416).

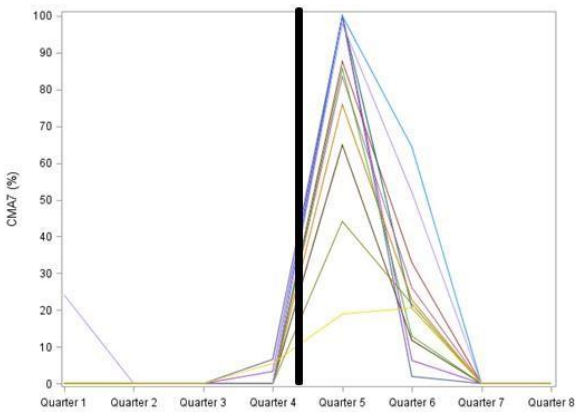
Group before hospitalisation: no use



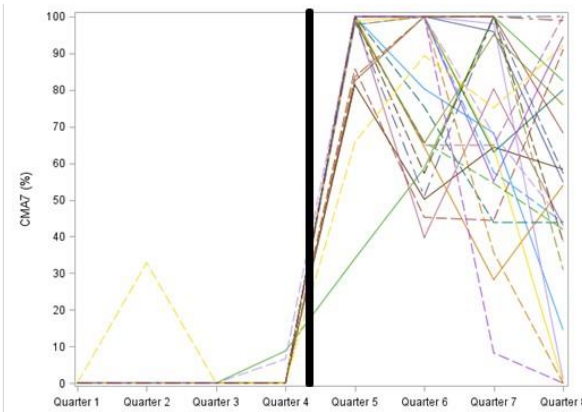
From no use to mild use



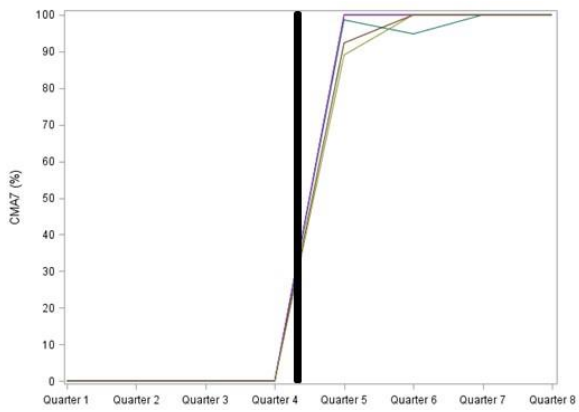
From no use to moderate use



From no use to decreasing use

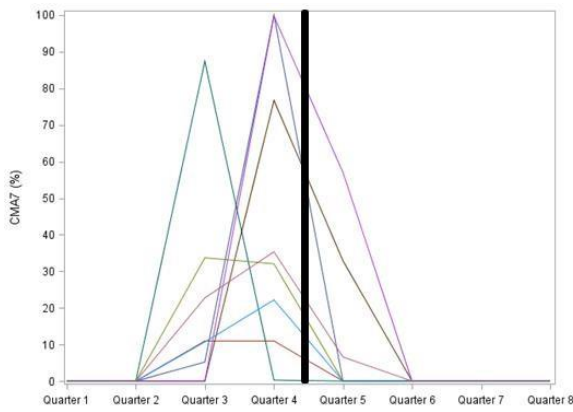


From no use to high use

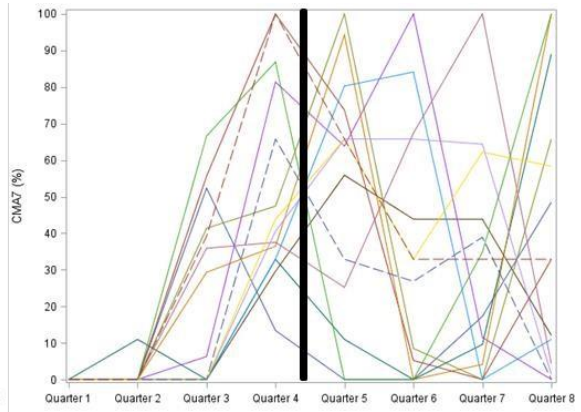


From no use to very high use

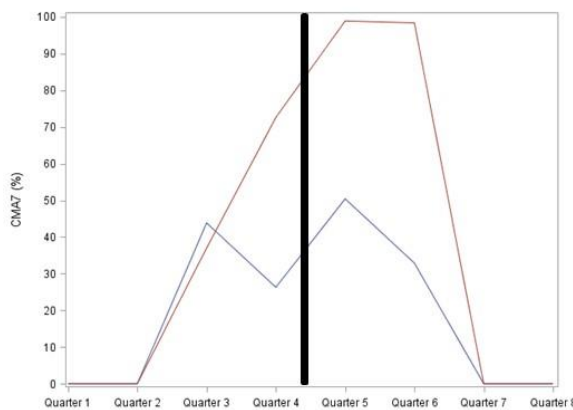
Group before hospitalisation: increasing use



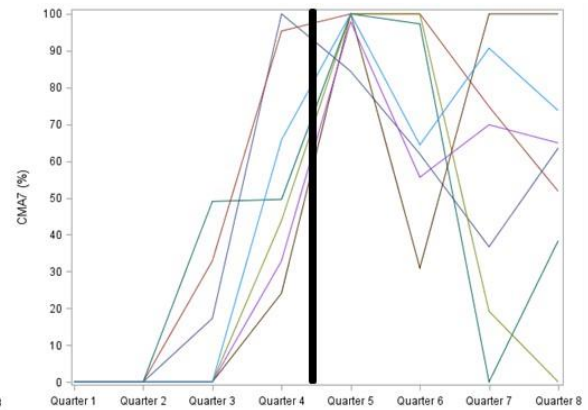
From increasing use to mild use



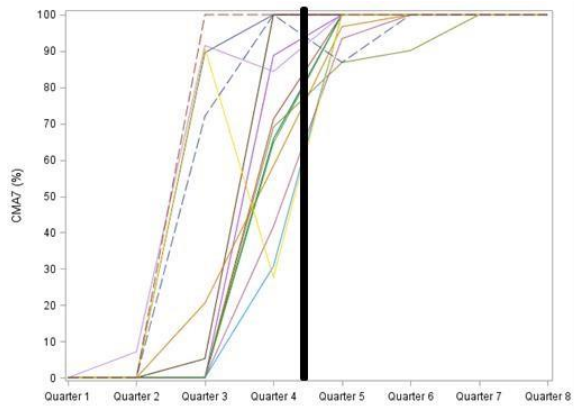
From increasing use to moderate use



From increasing use to decreasing use

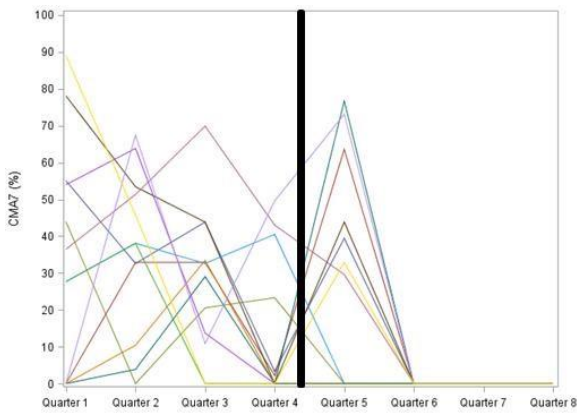


From increasing use to high use

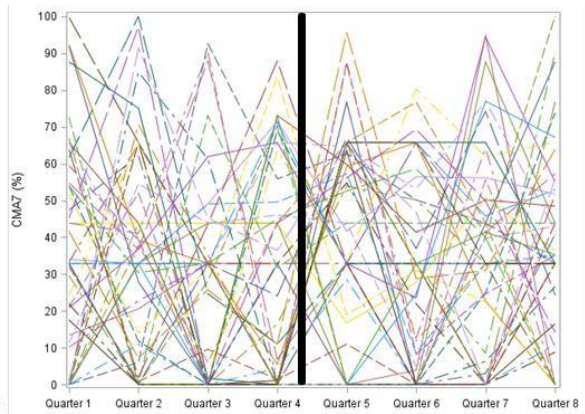


From increasing use to very high use

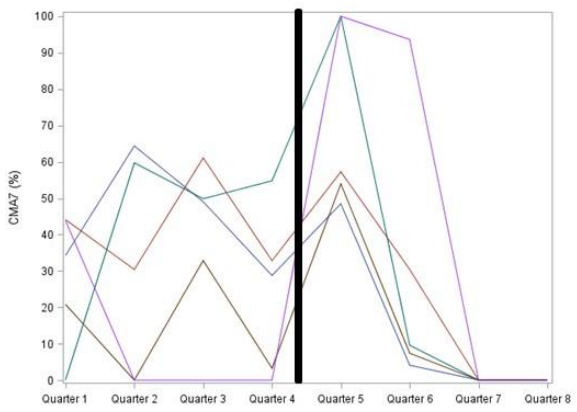
Group before hospitalisation: mild use



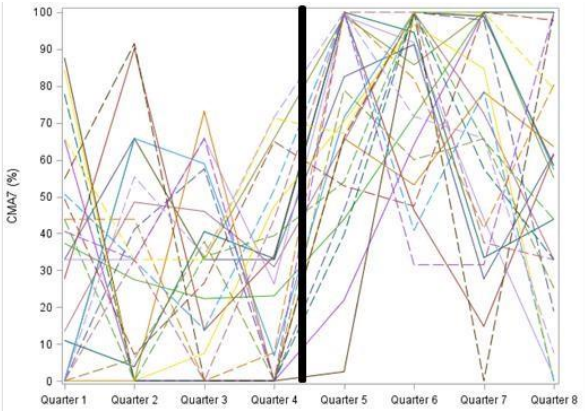
From mild use to mild use



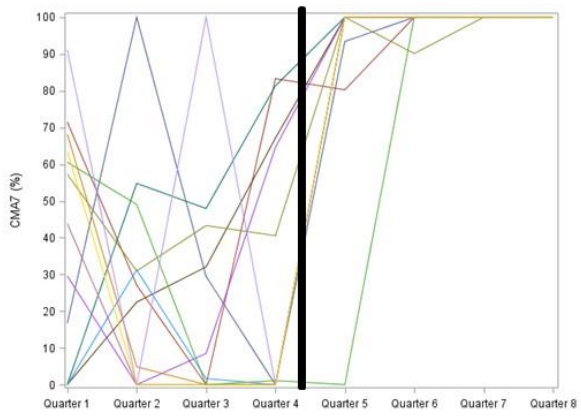
From mild use to moderate use



From mild use to decreasing use

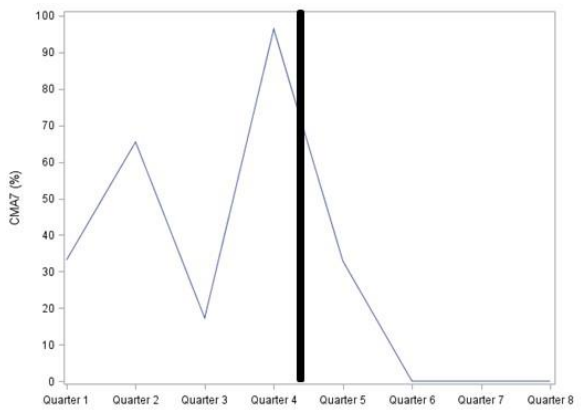


From mild use to high use

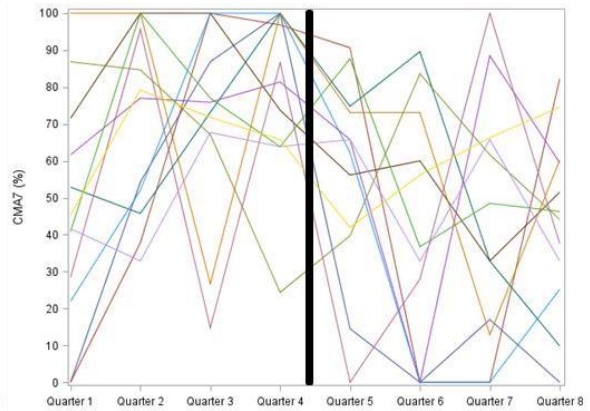


From mild use to very high use

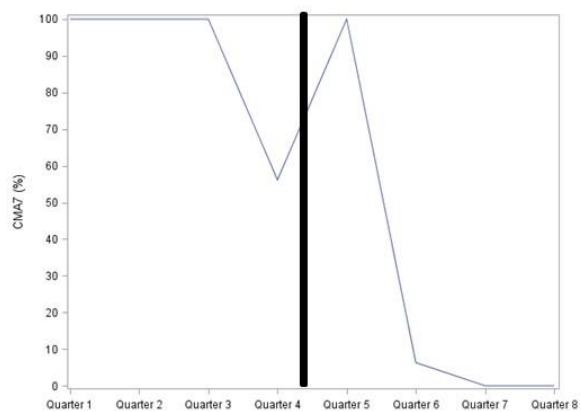
Group before hospitalisation: high use



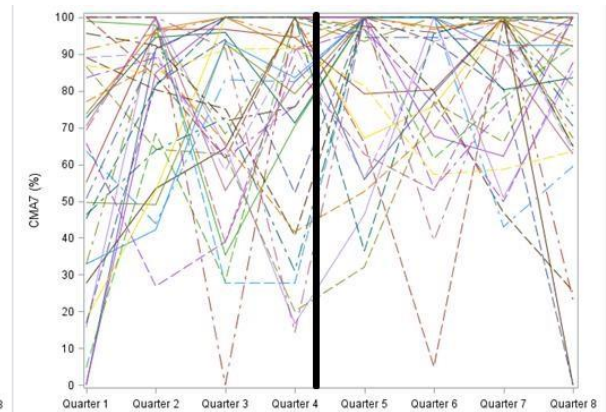
From high use to mild use



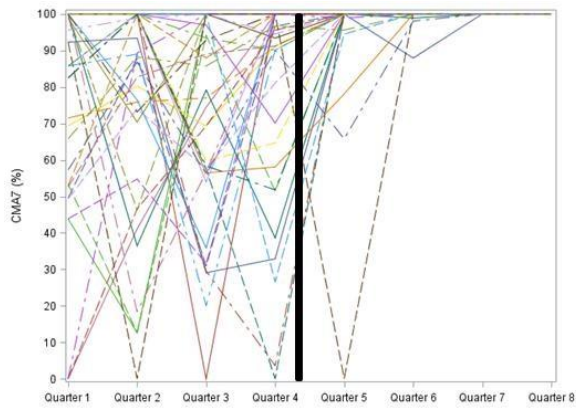
From high use to moderate use



From high use to decreasing use

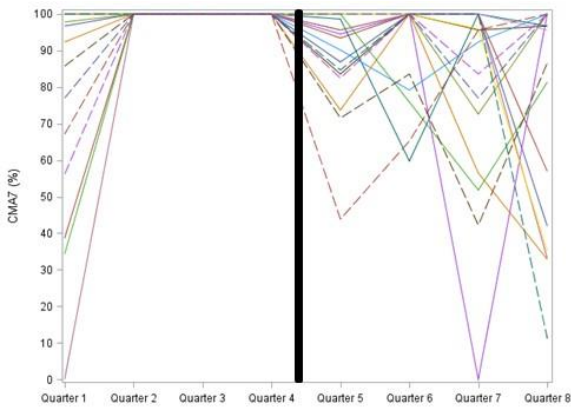


From high use to high use

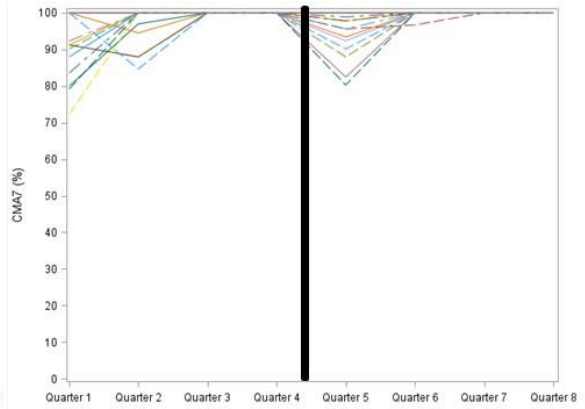


From high use to very high use

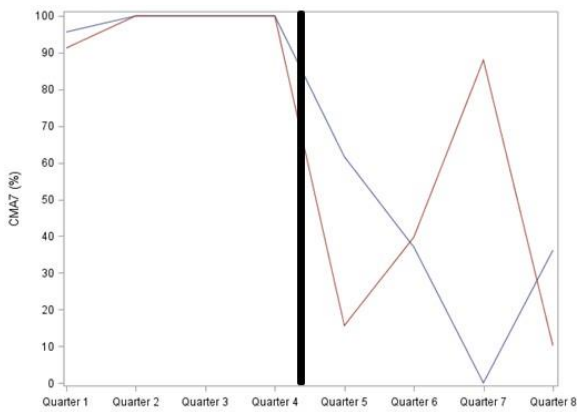
Group before hospitalisation: very high use



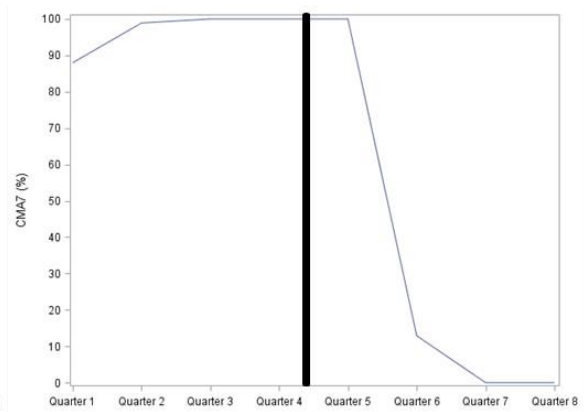
From very high use to high use



From very high use to very high use



From very high use to moderate use



From very high use to decreasing use

No patient switched from very high use to mild use, so there are only 4 graphs in this group.

Note: In these graphs, one line represents one patient