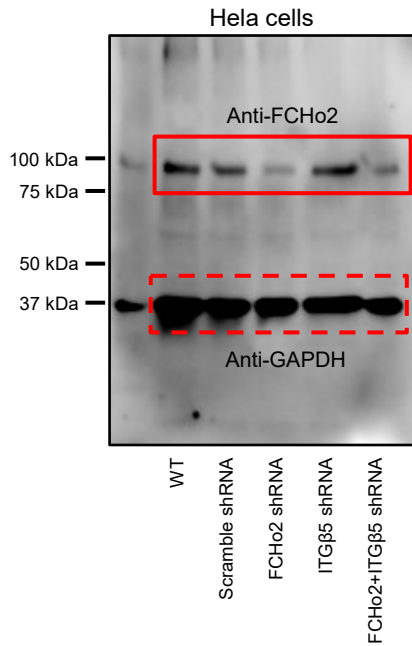
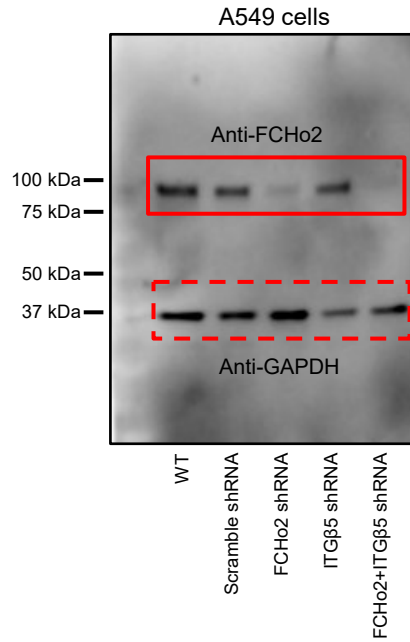
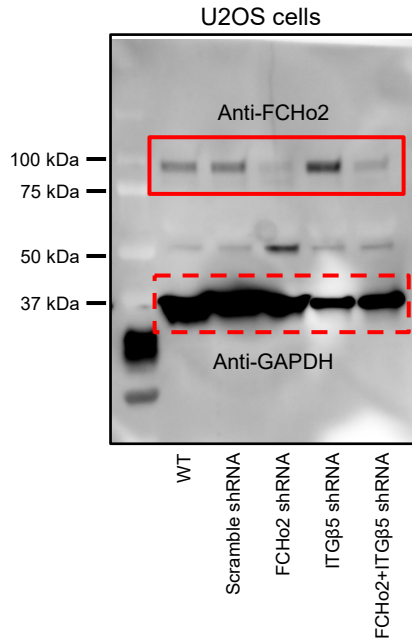
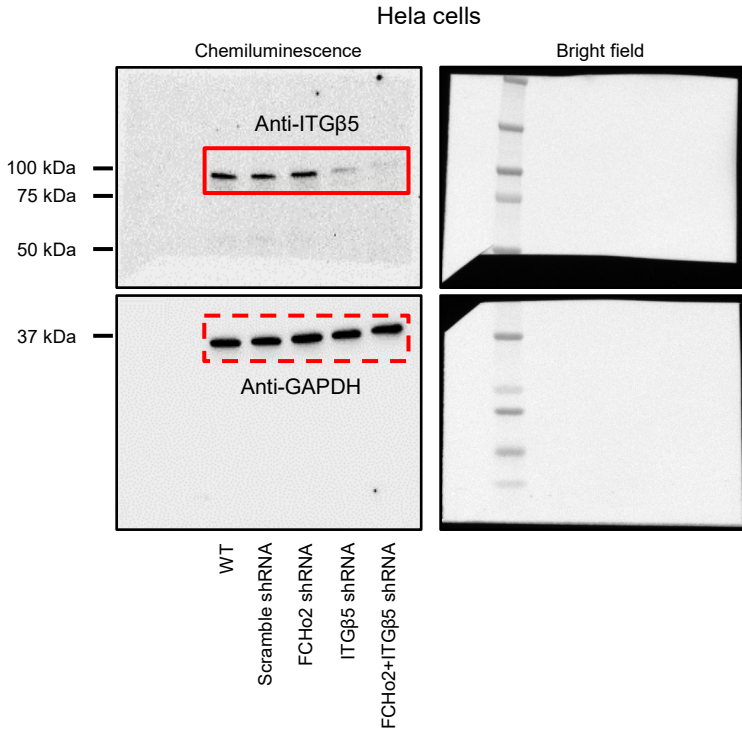
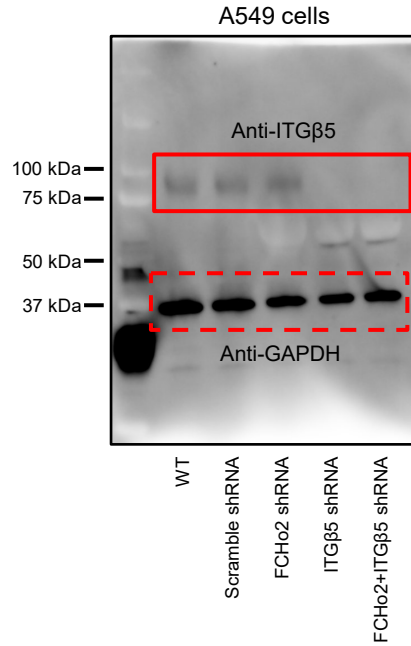
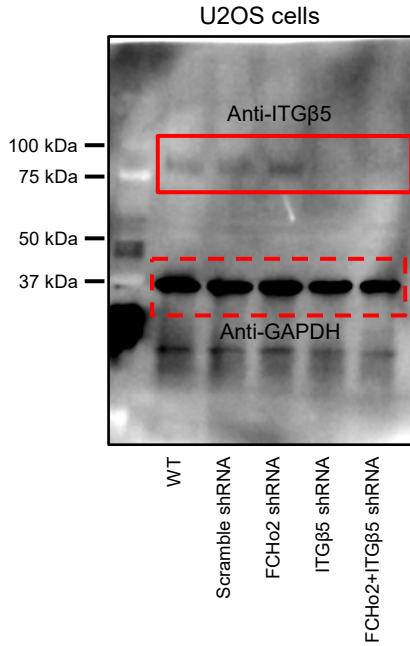


Fig. 6b

FCHo2 knockdown



ITGβ5 knockdown



Note: ITGβ5 exhibits very poor solubility in RIPA lysis buffer. For HeLa cells, we found that GAPDH bands were too intense to be exposed together with ITGβ5 bands. We cut the membrane and exposed GAPDH and ITGβ5 separately. Here, we provide the bright field images of the membranes with clear cut marks to show that loading controls (GAPDH) were run on the same blot.