

Figure S1

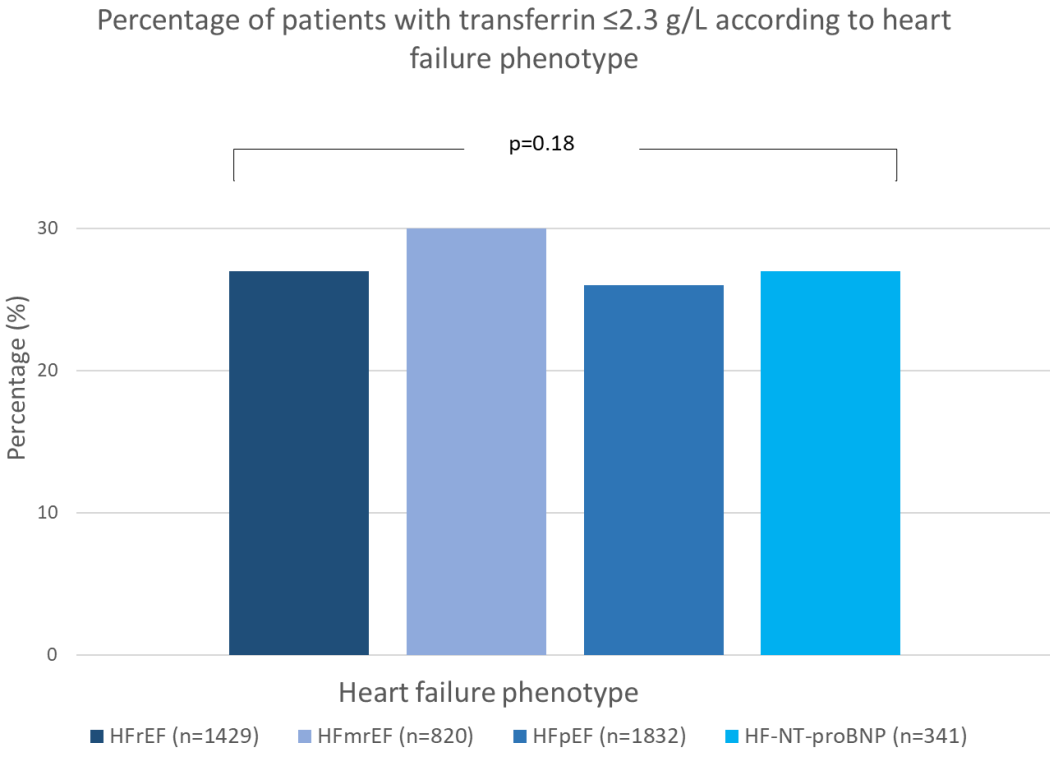
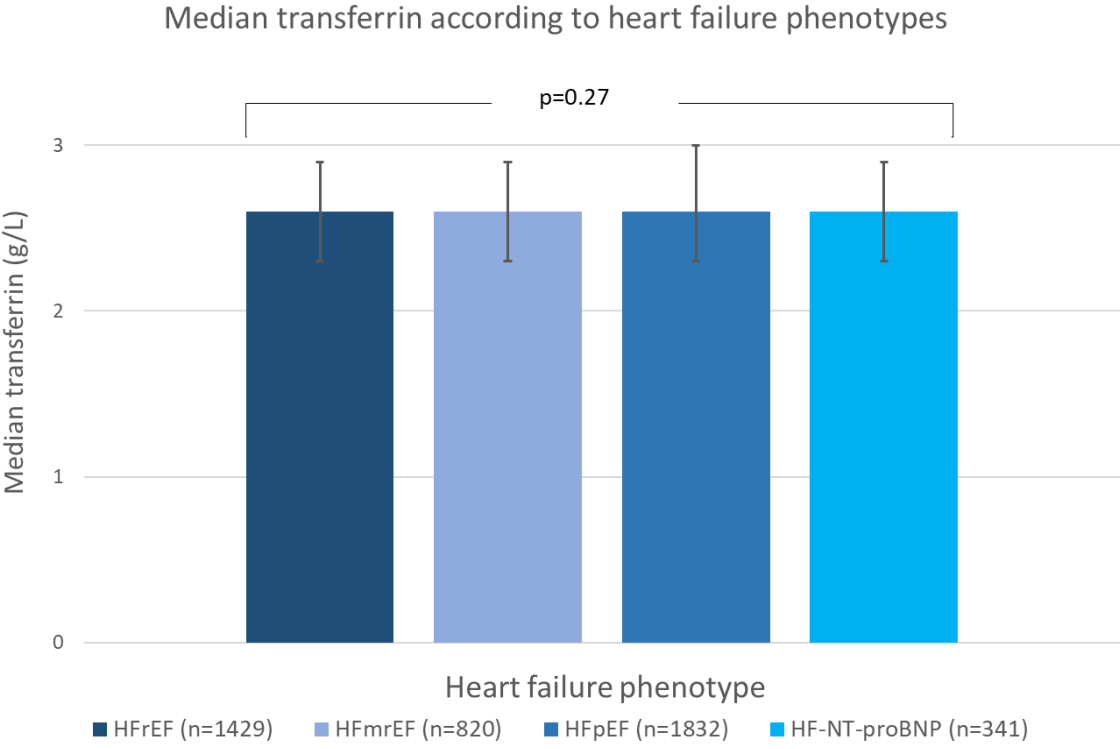


Figure S2

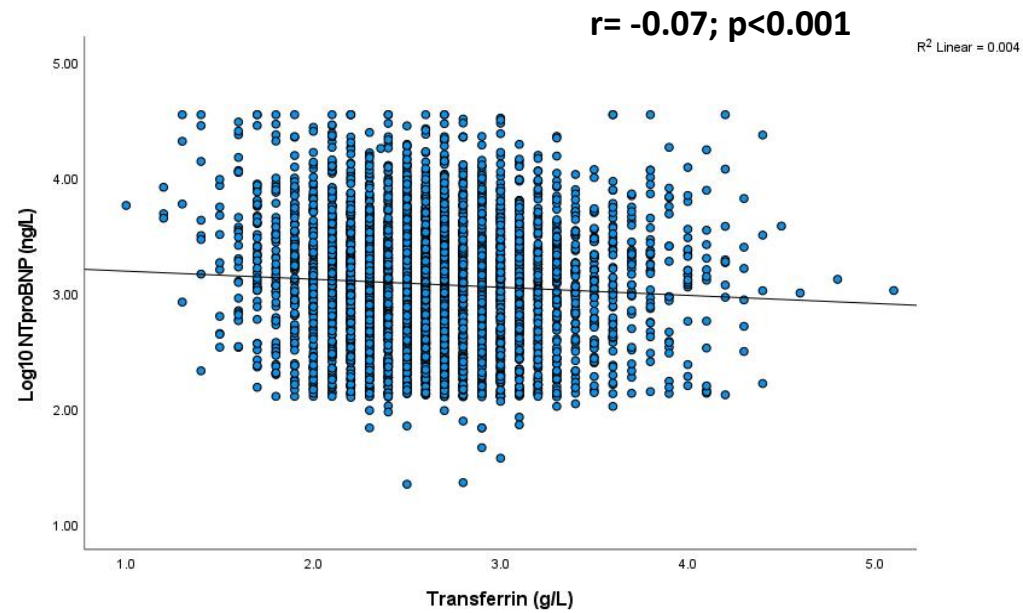
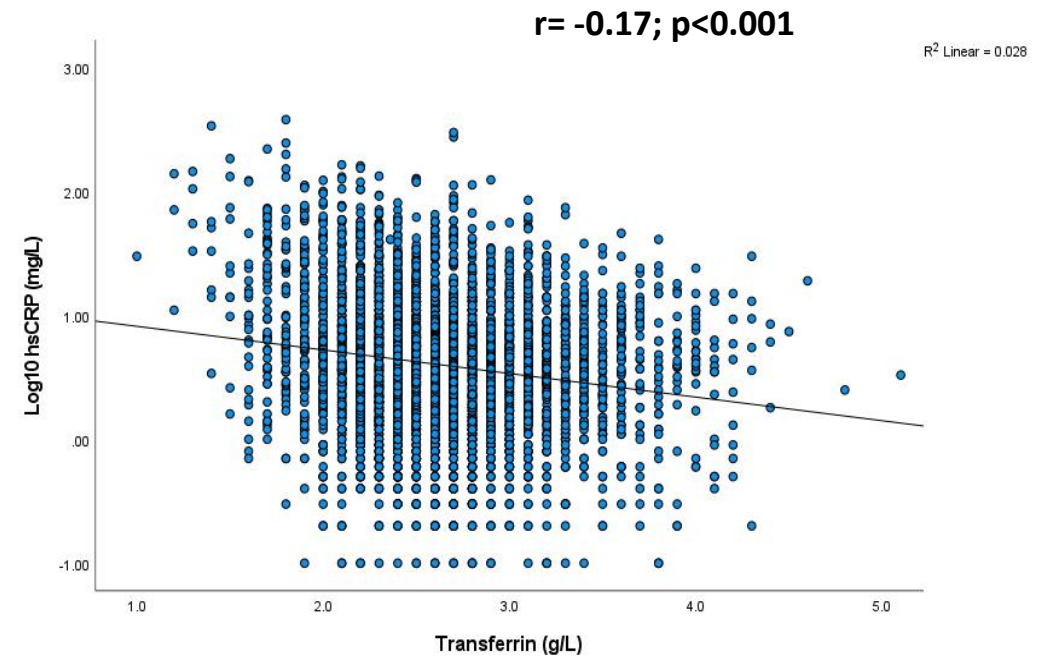
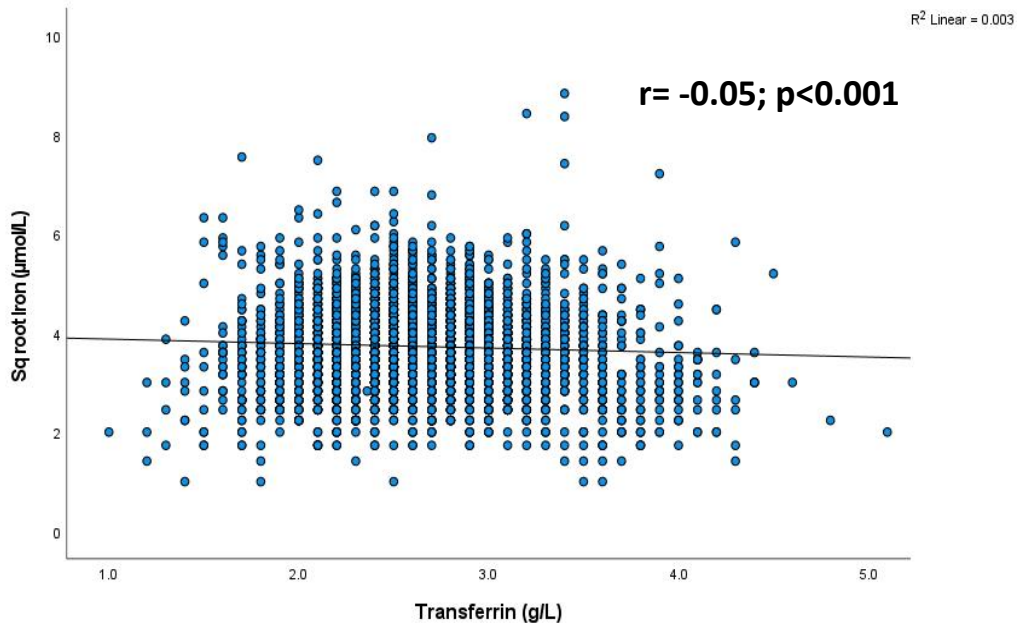


Figure S2

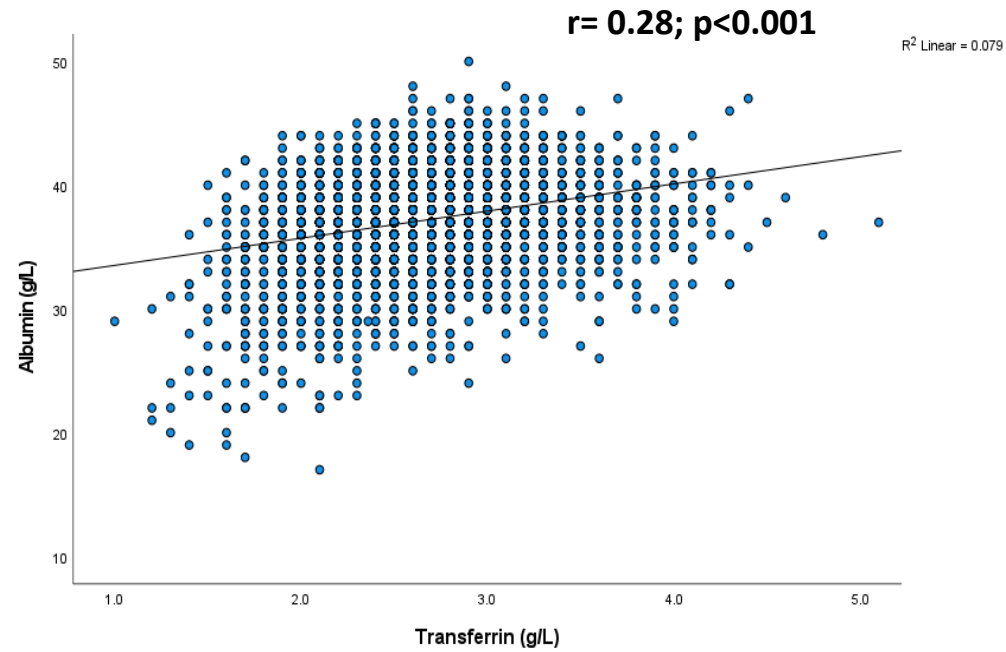
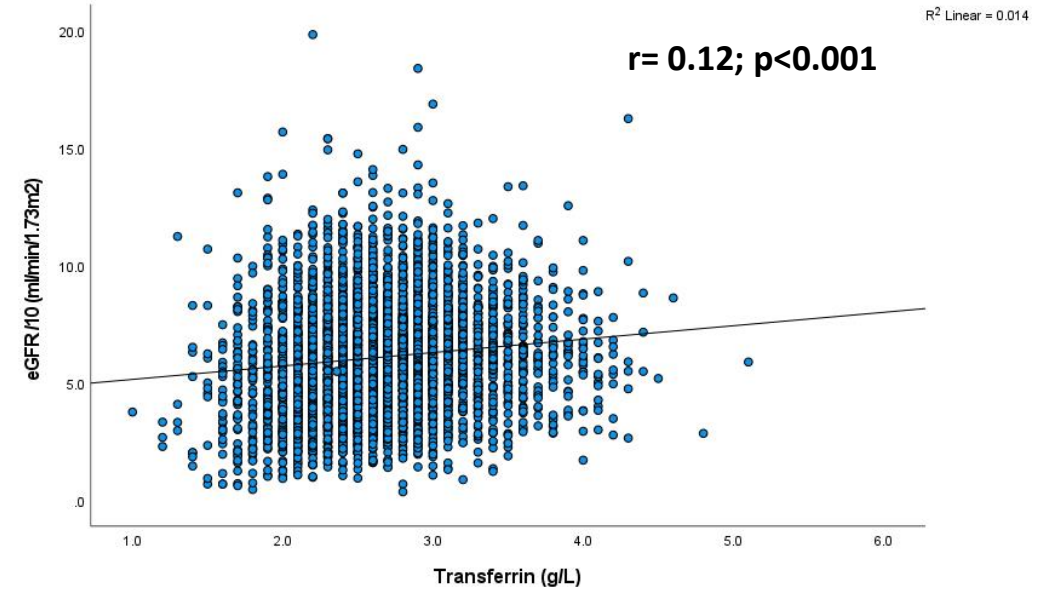
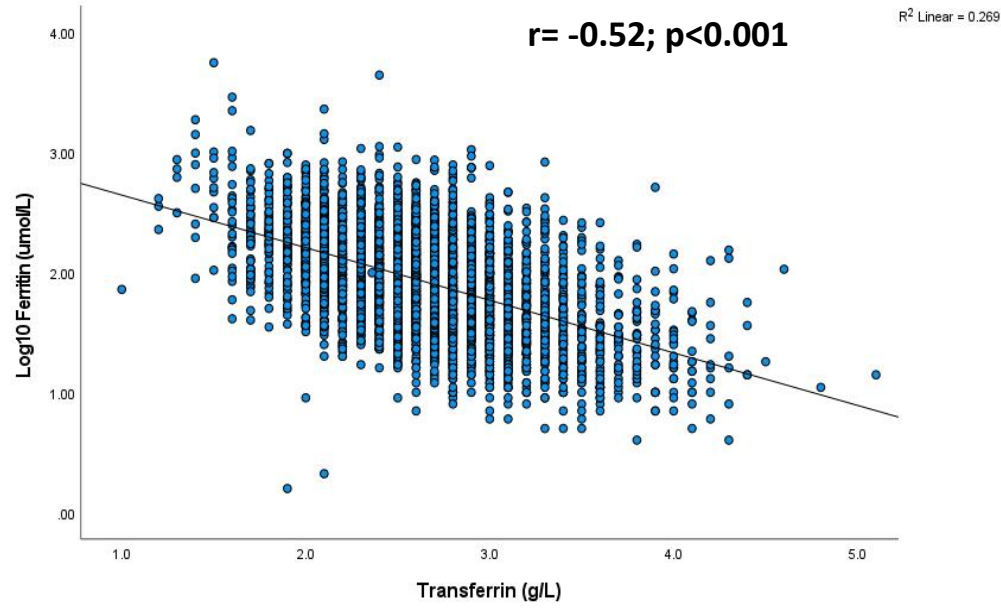
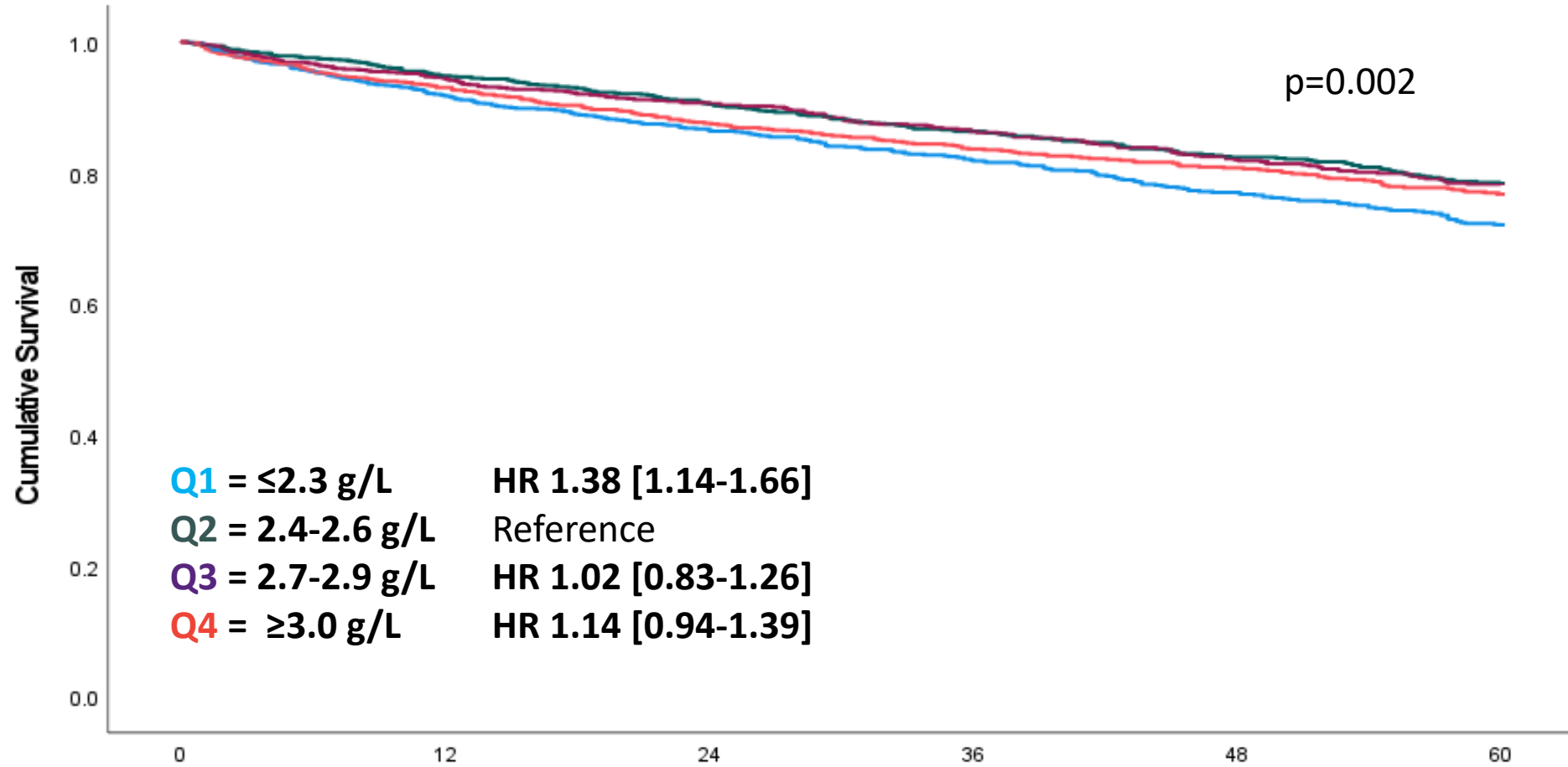


Figure S3a

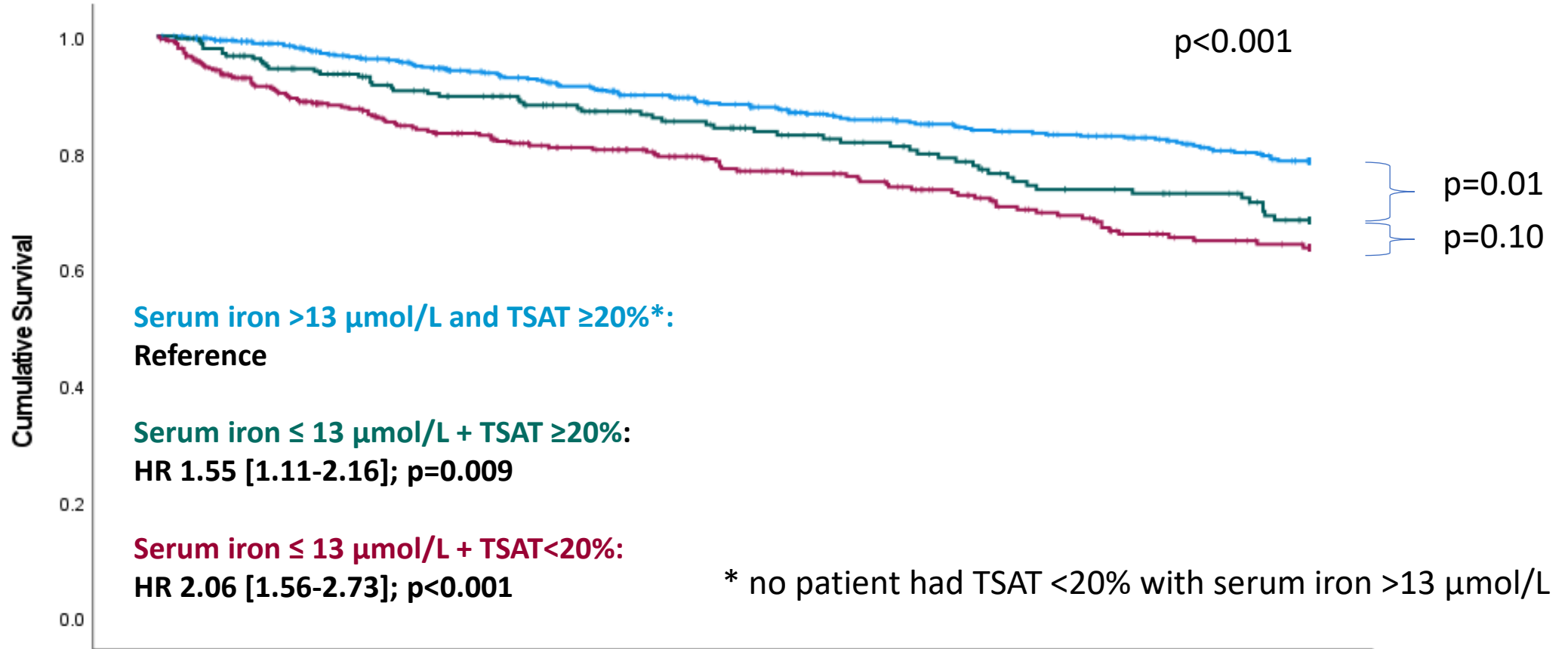


Number at risk

	0	12	24	36	48	60
Q1 (≤ 2.3 g/L)	1195	944	783	641	552	452
Q2 (2.4-2.6g/L)	1159	968	836	708	618	525
Q3 (2.7-2.9g/L)	1003	831	717	616	528	453
Q4 (≥ 3.0 g/L)	1065	872	747	643	563	469

Figure S3b

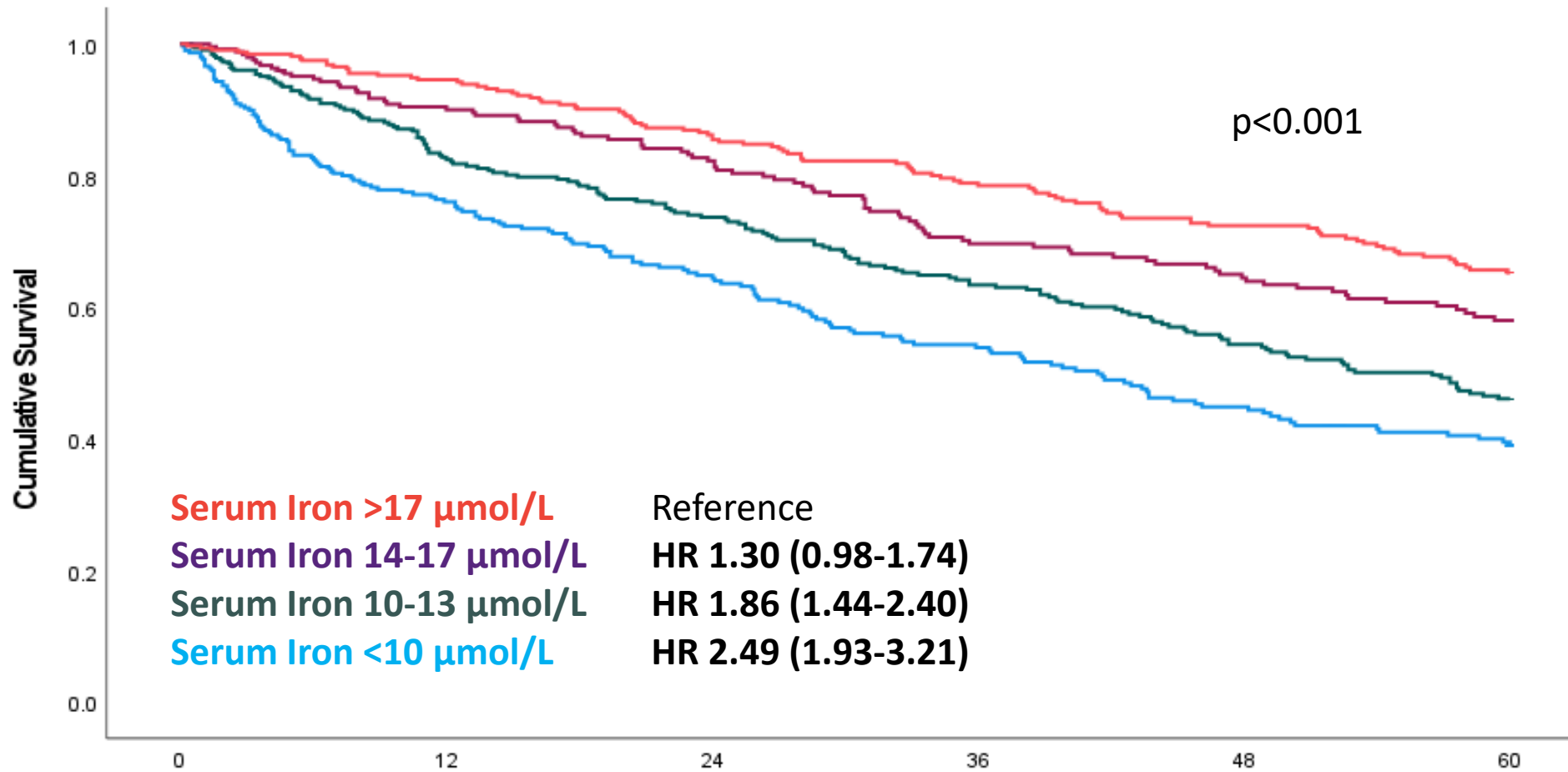
Analysis of patients only in the lowest quartile (≤ 2.3 g/L) of serum transferrin concentration



Number at risk

	0	12	24	36	48	60
Low Tf alone	571	490	412	317	313	263
+ low SIC + TSAT $\geq 20\%$	239	191	157	128	105	85
+ low SIC + TSAT $< 20\%$	385	263	214	166	134	104

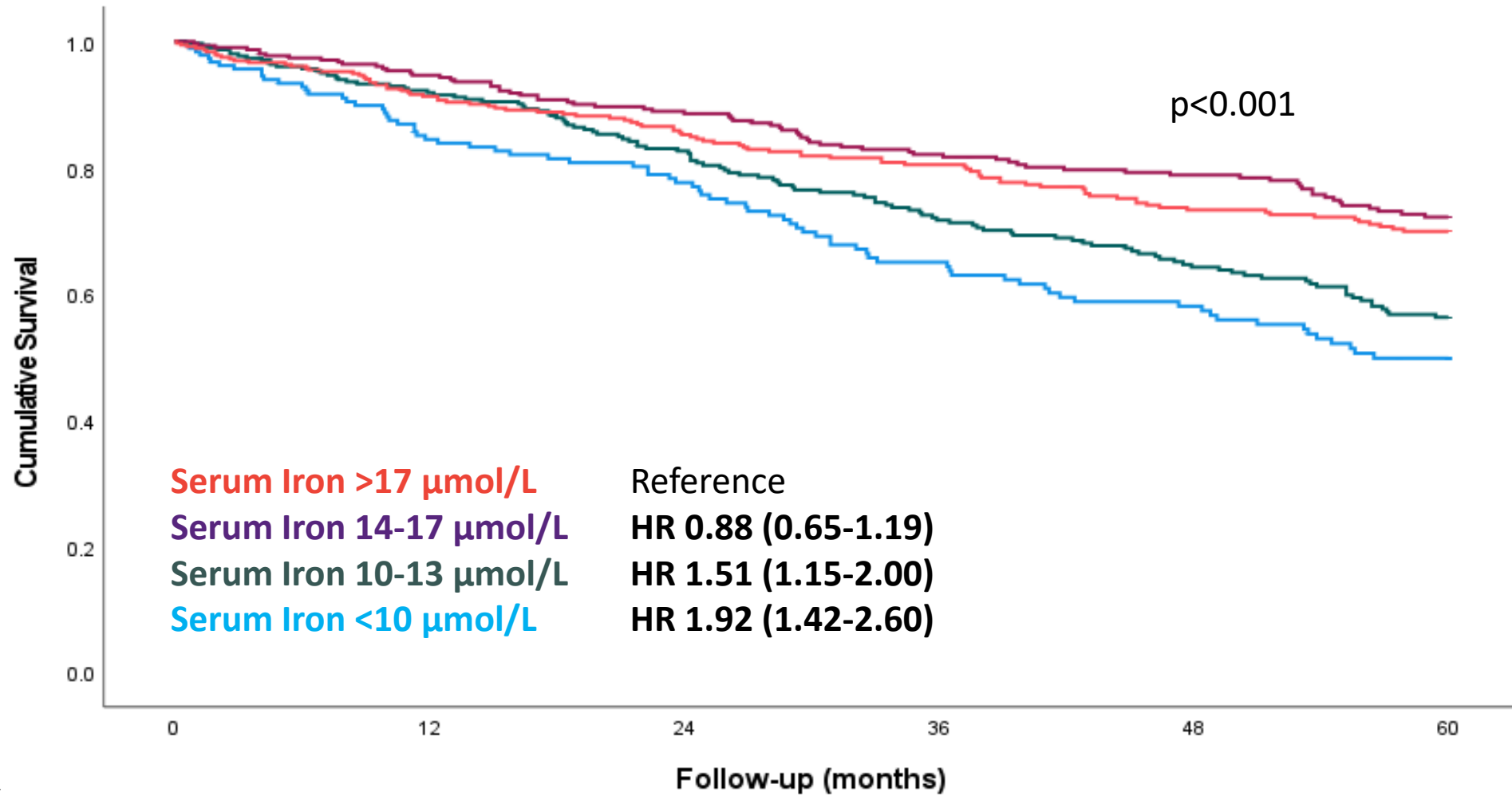
Figure S4a



Number at risk

	0	12	24	36	48	60
Serum SIC >17	324	283	241	209	189	159
Serum SIC 14-17	247	207	172	139	124	104
Serum SIC 10-13	326	249	213	172	142	112
Serum SIC <10	298	206	157	122	97	76

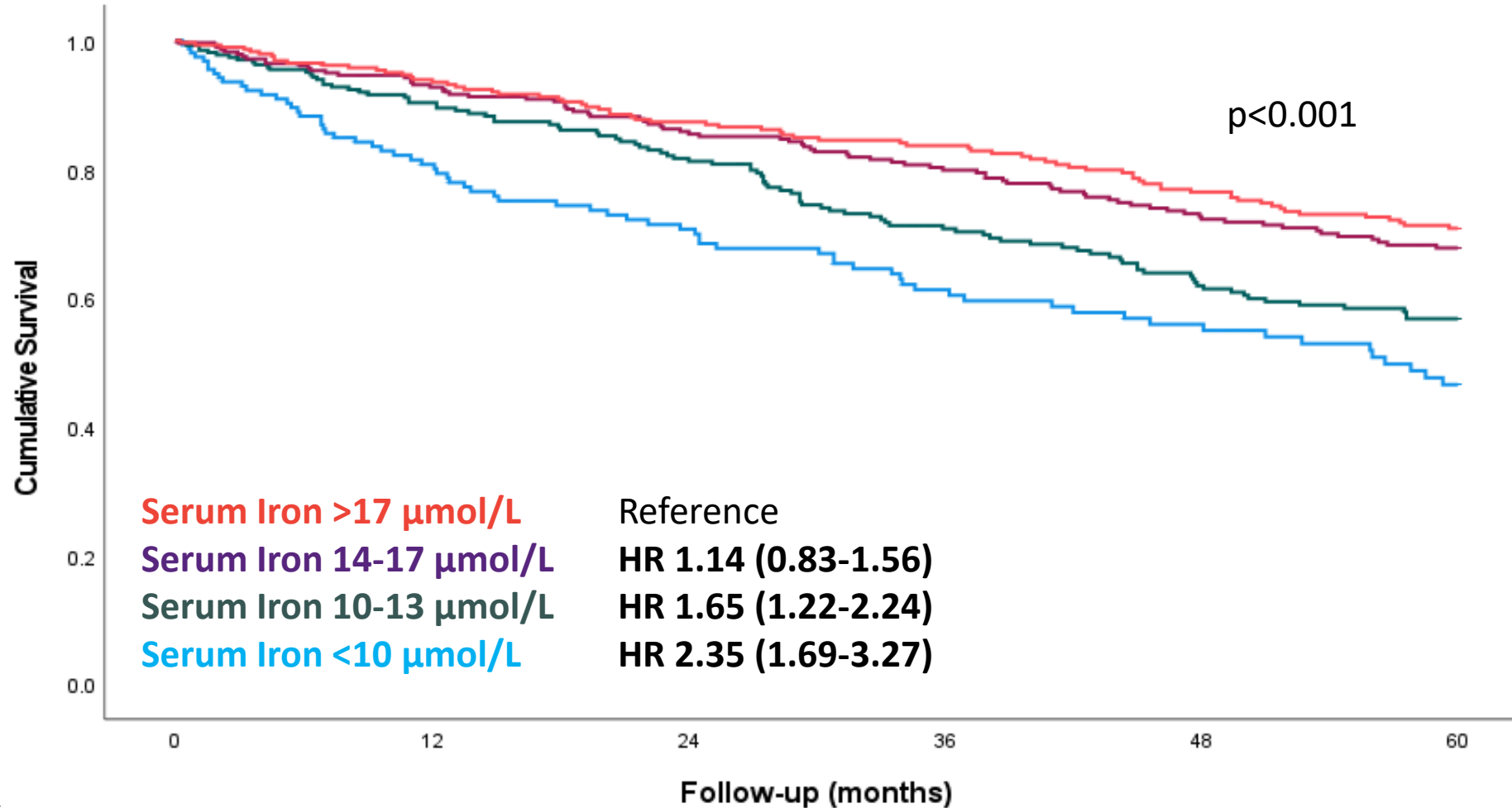
Figure S4b



Number at risk

	0	12	24	36	48	60
Serum SIC >17	360	298	258	228	200	181
Serum SIC 14-17	311	270	242	207	185	157
Serum SIC 10-13	305	261	216	179	151	125
Serum SIC <10	183	139	120	94	82	62

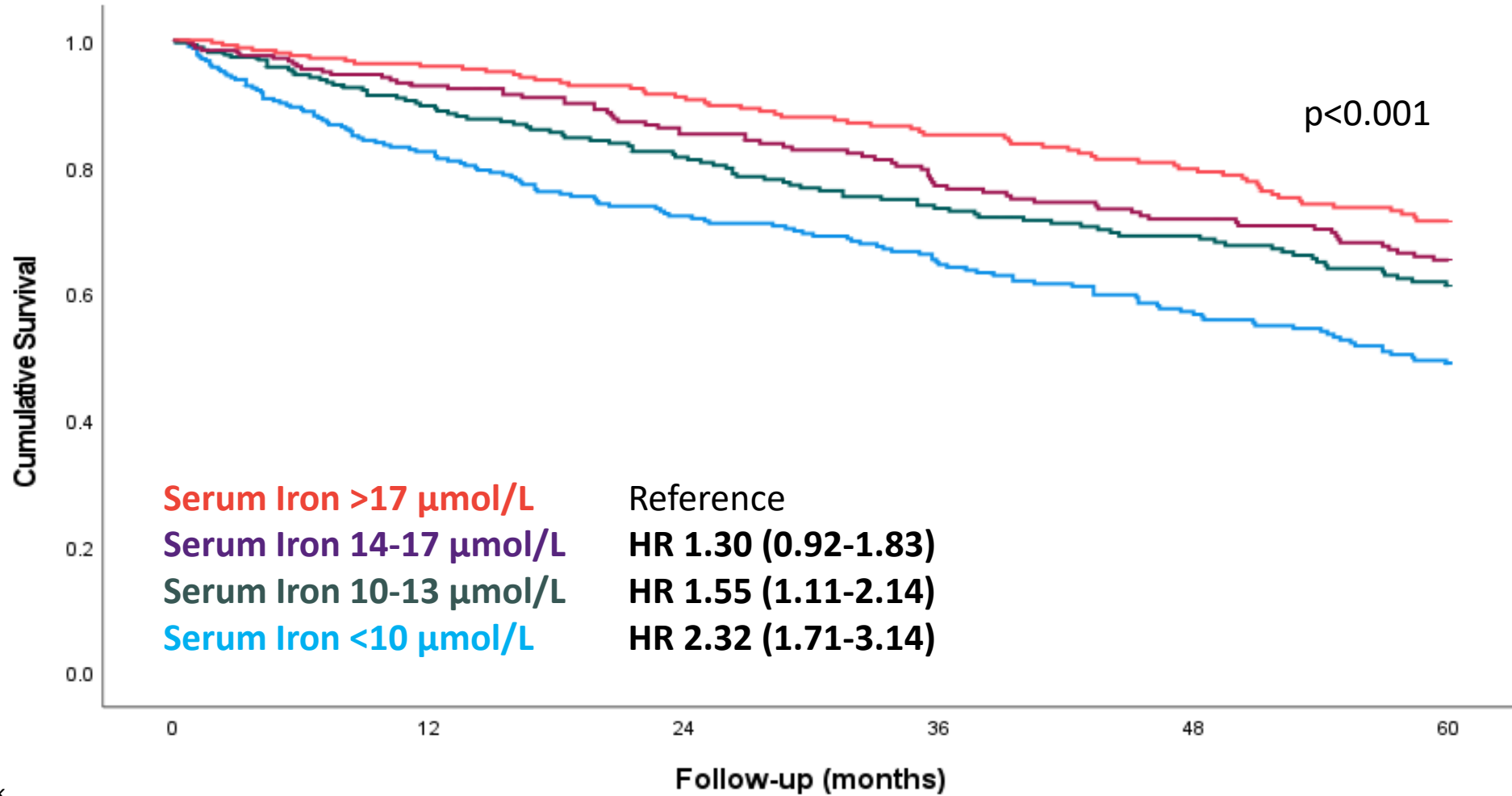
Figure S4c



Number at risk

	0	12	24	36	48	60
Serum SIC >17	294	249	219	200	177	158
Serum SIC 14-17	286	250	220	195	167	148
Serum SIC 10-13	267	217	184	149	124	105
Serum SIC <10	156	115	95	72	59	43

Figure S4d



Number at risk

	0	12	24	36	48	60
Serum SIC >17	250	225	202	181	160	133
Serum SIC 14-17	249	205	174	149	135	119
Serum SIC 10-13	261	215	185	158	139	113
Serum SIC <10	305	227	186	156	129	105