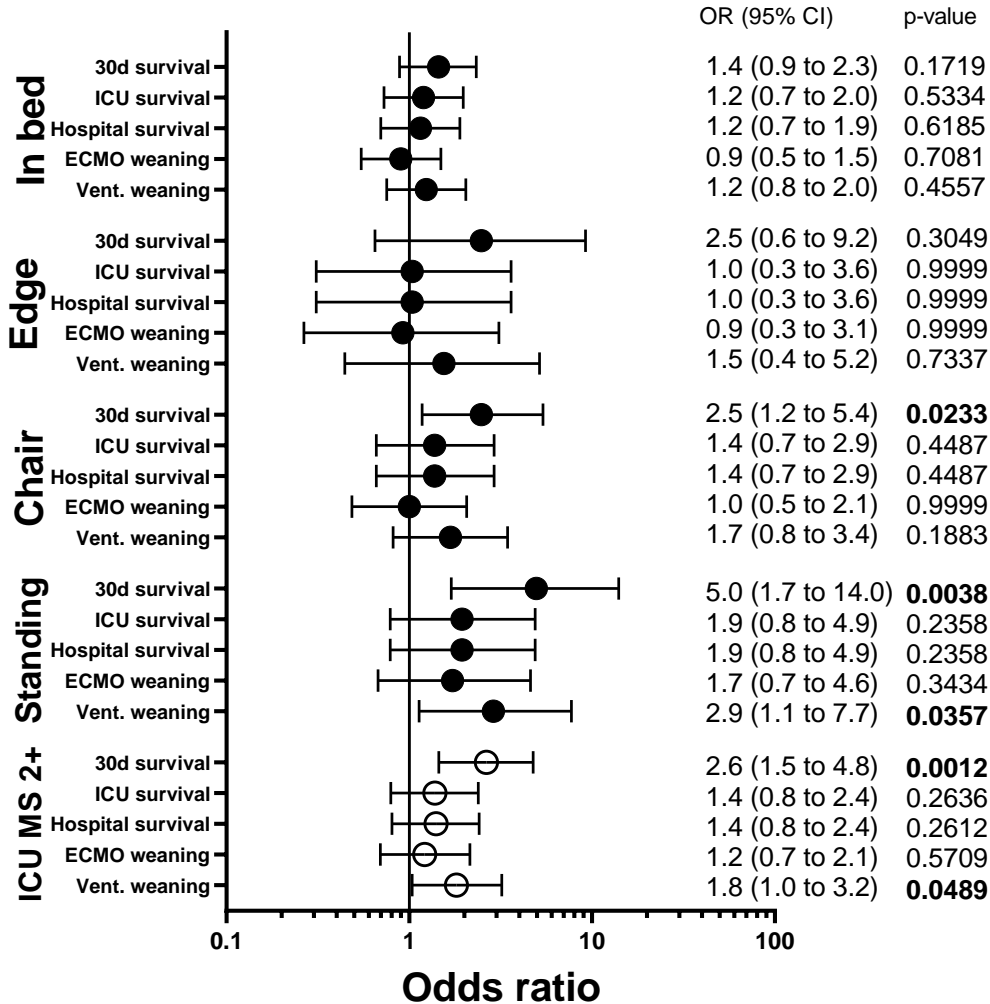


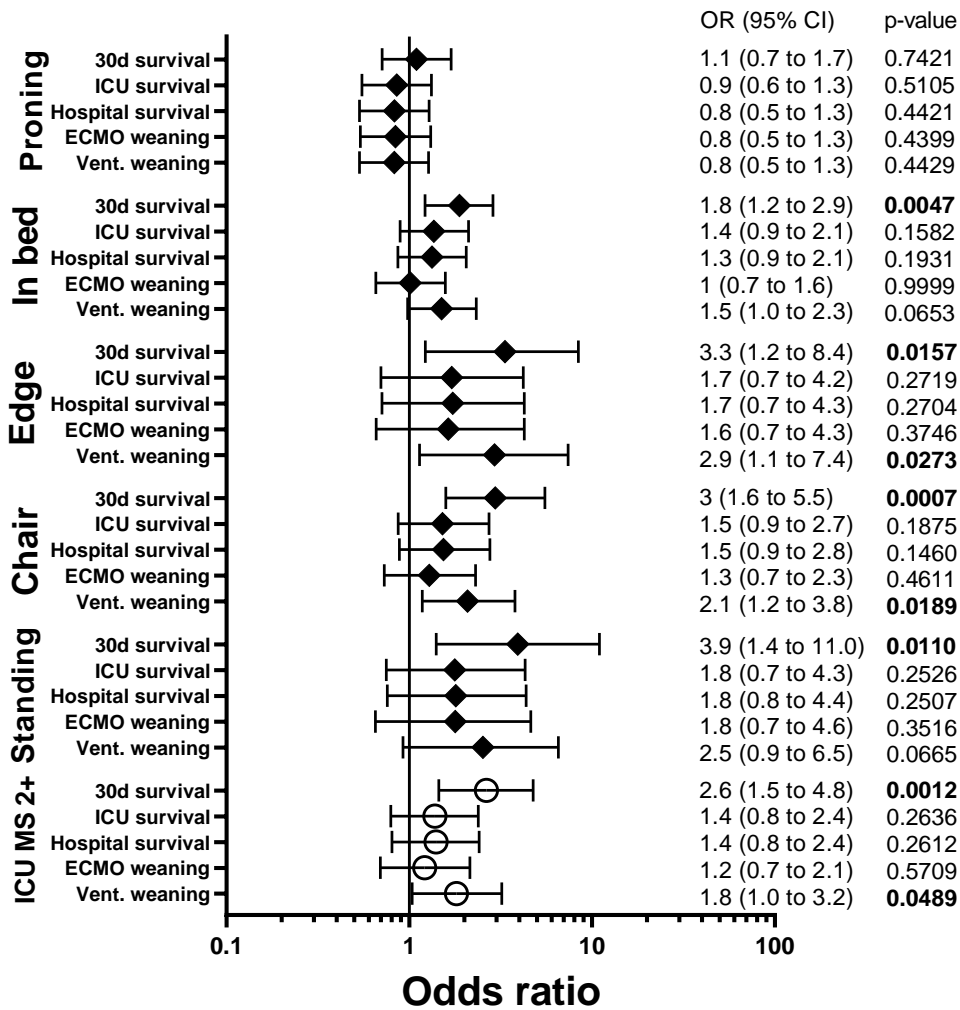
Supplementary material

Supplementary figure 1: Outcome in V-V ECMO according to mobilization.



Each mobilization (In bed, Edge (of bed), Chair, Standing) was compared to patients without mobilization (None) or to those with a lower ICU mobility scale (ICU MS 2+) and an OR for each outcome was calculated. A Odds ratio >1 indicates better outcome with mobilization. Abbreviations: OR = odds ratio; CI = confidence interval; ICU = intensive care unit; ICU MS 2+ = ICU mobility scale ≥ 2 ; Vent. = Ventilation

Supplementary figure 2: Outcome in V-V ECMO according to mobilization.



Each mobilization (Proning, In bed, Edge (of bed), Chair, Standing) was compared to all patients not receiving this particular type of mobilization or to those with a lower ICU mobility scale (ICU MS 2+) and an OR for each outcome was calculated. A Odds ratio >1 indicates better outcome with mobilization. Abbreviations: OR = odds ratio; CI = confidence interval; ICU = intensive care unit; ICU MS 2+ = ICU mobility scale ≥2; Vent. = Ventilation