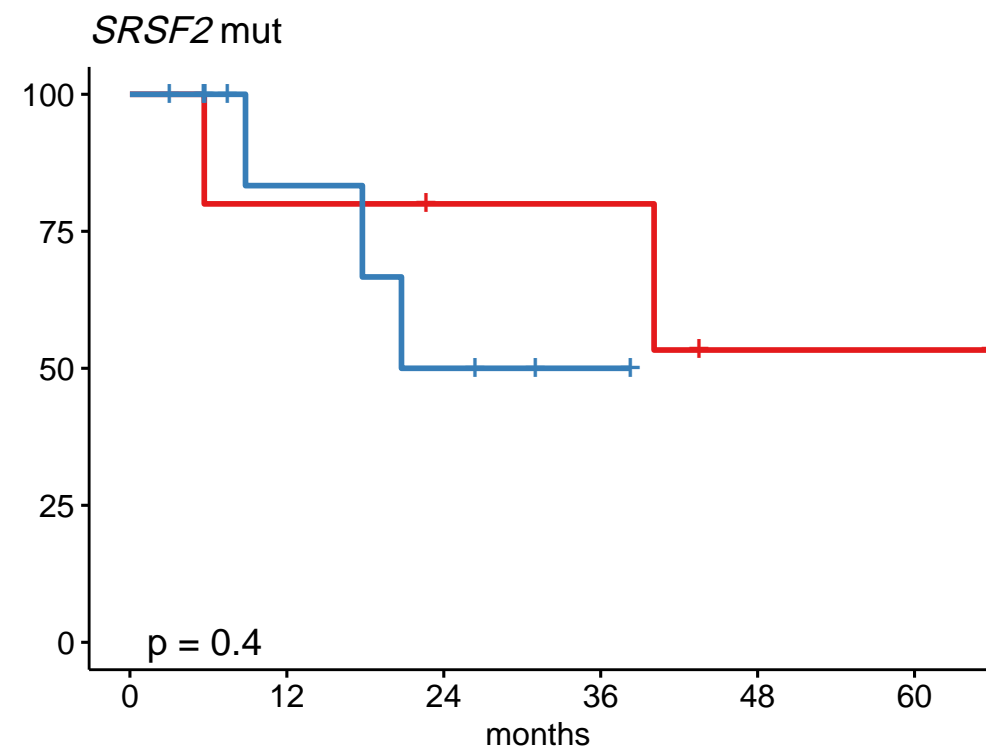


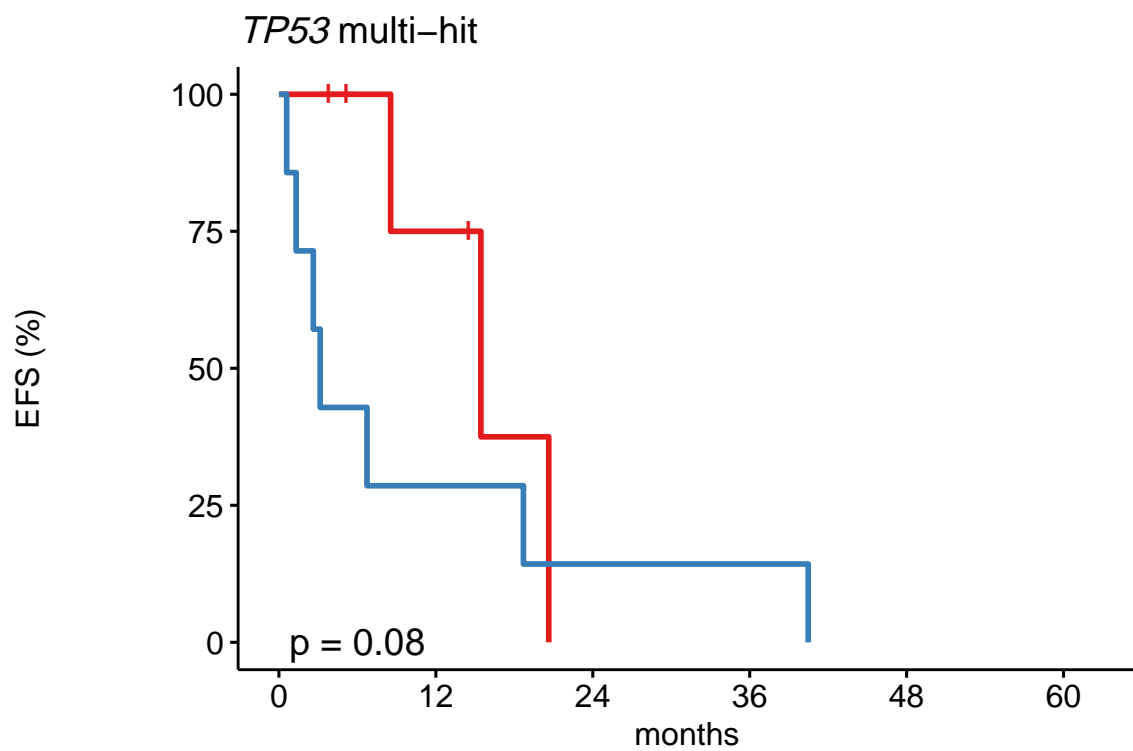
Number at risk

MEP ≥ 38%	41	41	37	28	22	16
MEP < 38%	40	31	23	16	14	10



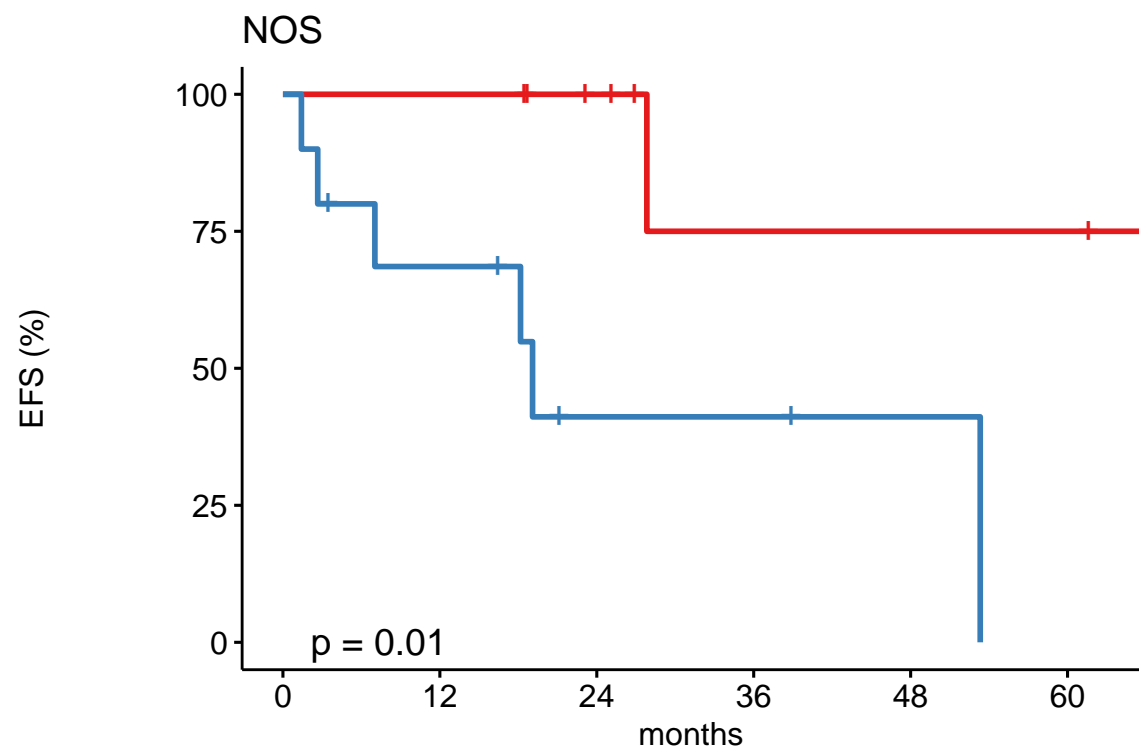
Number at risk

MEP ≥ 38%	5	4	3	3	1	1
MEP < 38%	10	5	3	1	0	0



Number at risk

MEP ≥ 38%	6	3	0	0	0	0
MEP < 38%	7	2	1	1	0	0



Number at risk

MEP ≥ 38%	9	9	6	3	3	3
MEP < 38%	10	6	2	2	1	0