

Supporting Information for:

Advancing Structural Batteries: Cost-Efficient High-Performance

Carbon Fiber-Coated LiFePO₄ Cathodes

Jaehoon Choi, Omid Zabihi, Mojtaba Ahmadi, Minoo Naebe*
Carbon Nexus, Institute for Frontier Materials (IFM), Deakin University, Waurn Ponds, VIC, 3216,
Australia

*Corresponding Author: minoo.naebe@deakin.edu.au



Figure S1. A picture of LiFePO₄ coating performance onto carbon fibre tow (CF); (a) carbon fibre tow substrate which is fabricated PVDF binder prior to coating LiFePO₄ (b) 90 LiFePO₄/CF and (c) 78 LiFePO₄/CF.

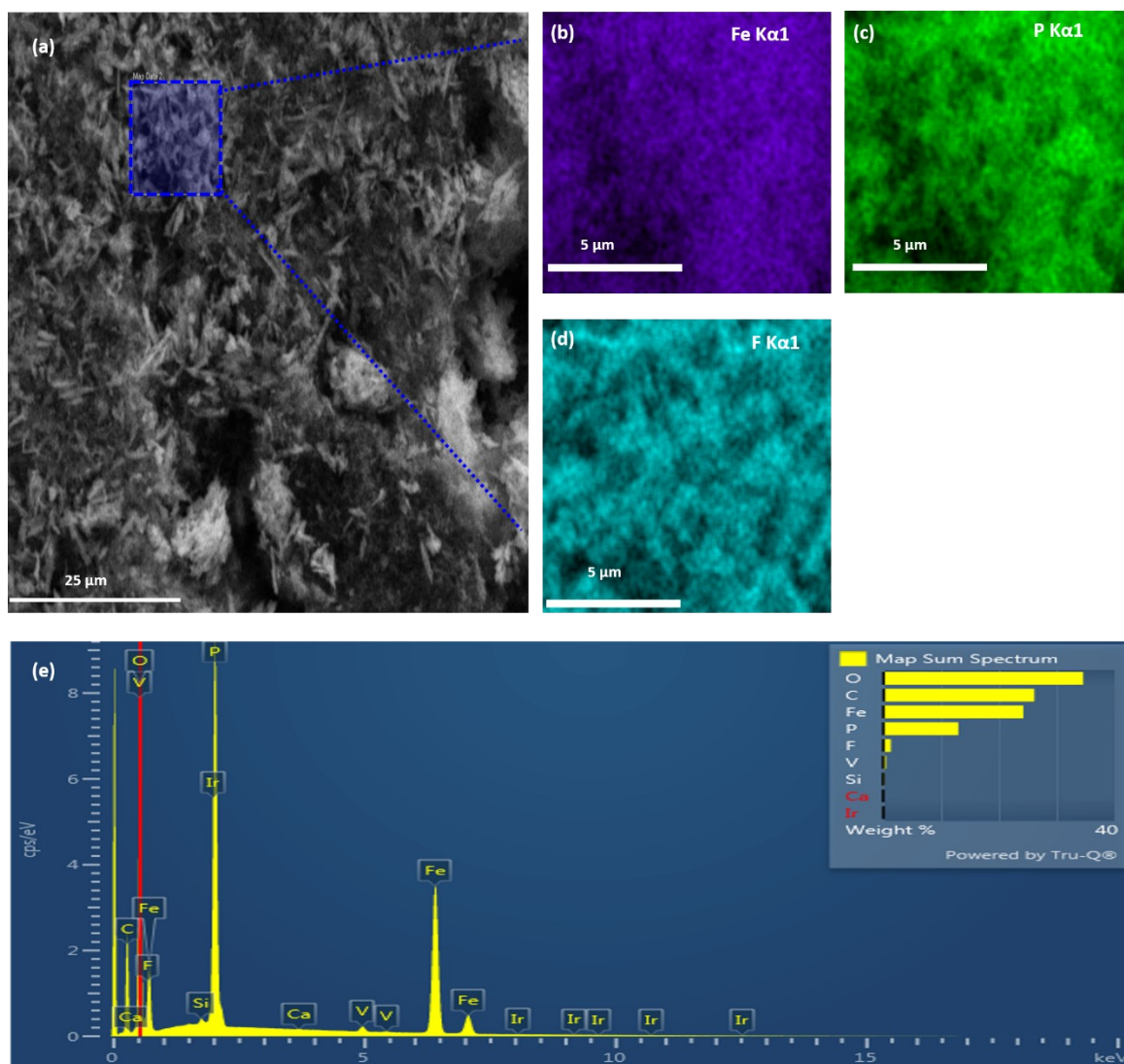


Figure S2. EDX map of 78 LiFePO₄/CF; (a) EDX mapping image, (b & c) a homogenous LFP distribution via Fe and P, (d) PVDF binder via F and (e) the spectrum of EDX.