

Supplementary Online Content

Wang S, Li Q, Lu J, et al. Treatment rates for mental disorders among children and adolescents: a systematic review and meta-analysis. *JAMA Netw Open*. 2023;6(10):e2338174. doi:10.1001/jamanetworkopen.2023.38174

eTable. JBI Quality Scores of Included Studies (N=40)

eFigure 1. Treatment Rates for Any Mental Disorder by Year of Data Collection

eFigure 2. Treatment Rates for Depressive Disorders by Year of Data Collection

eFigure 3. Treatment Rates for Anxiety Disorders by Year of Data Collection

eFigure 4. Treatment Rates for ADHD by Year of Data Collection

eFigure 5. Treatment Rates for Behavior Disorders by Year of Data Collection

eFigure 6. Treatment Rates for Any Mental Disorder by Regions

eFigure 7. Treatment Rates for Depressive Disorders by Regions

eFigure 8. Treatment Rates for Anxiety Disorders by Regions

eFigure 9. Treatment Rates for ADHD by Regions

eFigure 10. Treatment Rates for Behavior Disorders by Regions

eFigure 11. Treatment Rates for Any Mental Disorder by Age Groups

eFigure 12. Treatment Rates for Depressive Disorders by Age Groups

eFigure 13. Treatment Rates for Anxiety Disorders by Age Groups

eFigure 14. Treatment Rates for ADHD by Age Groups

eFigure 15. Treatment Rates for Behavior Disorders by Age Groups

eFigure 16. Treatment Rates for Any Mental Disorder by Income Groups

eFigure 17. Treatment Rates for Depressive Disorders by Income Groups

eFigure 18. Treatment Rates for Anxiety Disorders by Income Groups

eFigure 19. Subgroup by Timeframe

eFigure 20. Treatment Rates for Any Mental Disorder by Timeframes

eFigure 21. Treatment Rates for Depressive Disorders by Timeframes

eFigure 22. Treatment Rates for Anxiety Disorders by Timeframes

eFigure 23. Treatment Rates for ADHD by Timeframes

eFigure 24. Treatment Rates for Behavior Disorders by Timeframes

eFigure 25. Subgroup by Informant Source

eFigure 26. Treatment Rates for Any Mental Disorder by Informant Sources

eFigure 27. Treatment Rates for Depressive Disorders by Informant Sources

eFigure 28. Treatment Rates for Anxiety Disorders by Informant Sources

eFigure 29. Treatment Rates for ADHD by Informant Sources

eFigure 30. Treatment Rates for Behavior Disorders by Informant Sources

eFigure 31. Subgroup by Health Service Type

eFigure 32. Treatment Rates for Any Mental Disorder by Health Service Types

eFigure 33. Treatment Rates for Depressive Disorders by Health Service Types

eFigure 34. Treatment Rates for Anxiety Disorders by Health Service Types

eFigure 35. Treatment Rates for ADHD by Health Service Types

eFigure 36. Treatment Rates for Behavior Disorders by Health Service Types

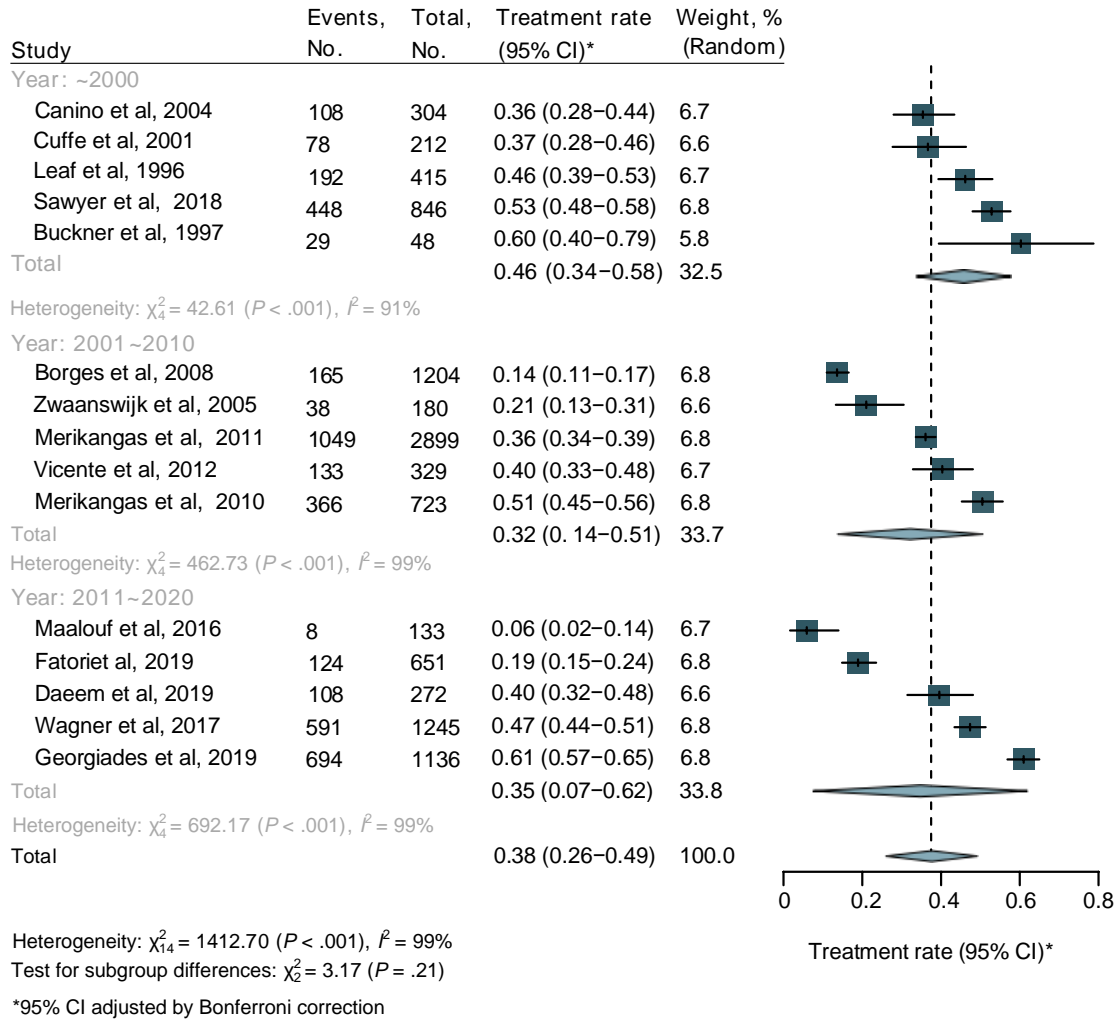
eFigure 37. Subgroup by Sample Origin Population

eFigure 38. Treatment Rates for Any Mental Disorder by the Sample Origin Population
eFigure 39. Treatment Rates for Depressive Disorders by the Sample Origin Population
eFigure 40. Treatment Rates for Anxiety Disorders by the Sample Origin Population
eFigure 41. Treatment Rates for ADHD by the Sample Origin Population
eFigure 42. Treatment Rates for Behavior Disorders by the Sample Origin Population
eFigure 43. Treatment Rates for Internalizing and Externalizing Disorders
eFigure 44. Sensitivity Analysis Forest Plots for Any Mental Disorder
eFigure 45. Sensitivity Analysis Forest Plots for Depressive Disorders
eFigure 46. Sensitivity Analysis Forest Plots for Anxiety Disorders
eFigure 47. Sensitivity Analysis Forest Plots for ADHD
eFigure 48. Sensitivity Analysis Forest Plots for Behavior Disorders
eFigure 49. Sensitivity Analysis by Excluding Studies in Which the 95% CI Was Outside the Aggregated 95% CI of All Studies
eFigure 50. Sensitivity Analysis by Excluding Studies Not Reported Age Ranges
eFigure 51. Funnel Plot (Left) and Trim-and-Fill Funnel Plot (Right)
eFigure 52. Treatment Rates for ADHD
eFigure 53. Treatment Rates for Behavior Disorders
eFigure 54. Subgroup Analysis by Age Group
eFigure 55. Subgroup Analysis by Income Level
eMethods 1. Retrieval Strategy
eMethods 2. Exposure
eResults. Study Selection
eAppendix. Explicit Search Entry
eReferences.

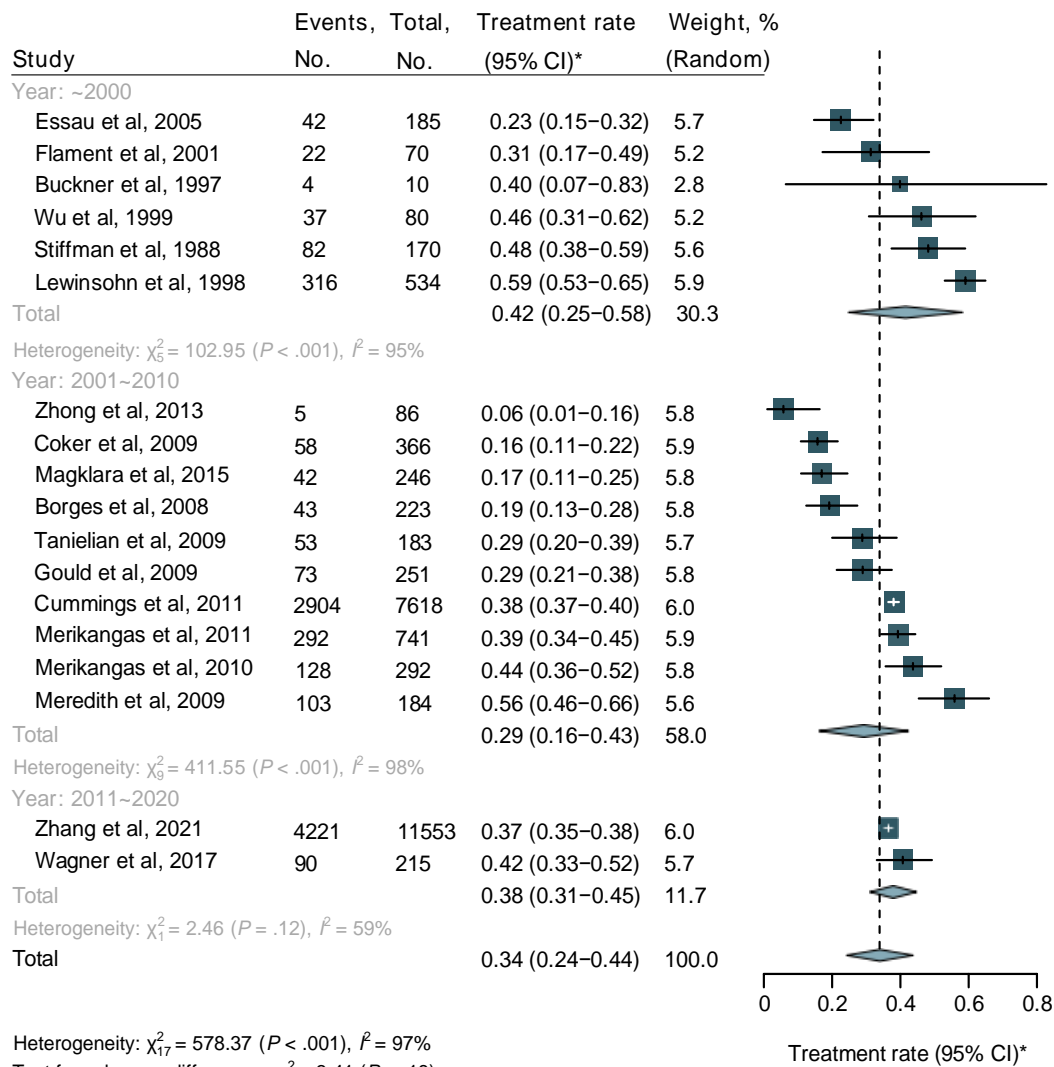
This supplementary material has been provided by the authors to give readers additional information about their work.

eTable. JBI Quality Scores of Included Studies (N=40)

Study	Item 1	Item 2	Item 3	Item 4	Item 5	Item 6	Item 7	Item 8	Item 9	Total
Angold et al, 2002	Yes	Yes	Yes	Yes	Yes	Yes	No	Yes	No	7
Bird et al, 2008	Yes	Yes	Yes	No	Unclear	Yes	No	Yes	Unclear	5
Borges et al, 2008	Yes	Yes	Yes	No	No	Yes	Unclear	Yes	No	5
Buckner et al, 1997	No	Unclear	No	Yes	Yes	Yes	Yes	Yes	Yes	6
Bussing et al, 2003	Yes	Yes	Yes	Yes	Yes	Yes	No	Yes	No	7
Bussing et al, 2011	Yes	Yes	Yes	Yes	Yes	Yes	No	Yes	No	7
Canino et al, 2004	Yes	Yes	Yes	No	Yes	Yes	No	Yes	Yes	7
Chavira et al, 2004	No	Yes	No	Yes	Yes	Yes	Yes	Yes	No	6
Coker et al, 2009	Yes	Yes	Yes	Yes	Yes	Yes	No	Yes	No	7
Cuffe et al, 2001	Yes	Unclear	Yes	Yes	Yes	Yes	Yes	Yes	Yes	8
Cummings et al, 2011	Yes	Unclear	Yes	No	Yes	Yes	No	Yes	Unclear	5
Daeem et al, 2019	No	No	Yes	Yes	Yes	Yes	Yes	Yes	Yes	7
Essau et al, 2005	No	Yes	Yes	Yes	Unclear	Yes	No	Yes	No	5
Fatori et al, 2019	Yes	Unclear	Yes	Yes	No	Yes	Yes	Yes	Unclear	6
Flament et al, 2001	Yes	Yes	No	No	Yes	Yes	Yes	Yes	Yes	7
Georgiades et al, 2019	Yes	Yes	Yes	Yes	No	Yes	Yes	Yes	No	7
Gómez-Beneyto et al, 1994	Yes	Yes	Yes	No	Yes	Yes	Yes	Yes	Yes	8
Gould et al, 2009	Yes	Unclear	Yes	Yes	Yes	Yes	Yes	Yes	No	7
Heiervang et al, 2007	Yes	Unclear	Yes	No	No	Yes	Yes	Yes	No	5
Leaf et al, 1996	Yes	No	Yes	Yes	Unclear	Yes	Yes	Yes	Unclear	6
Lewinsohn et al, 1998	Yes	Yes	Yes	No	Yes	Yes	No	Yes	No	6
Locke et al, 2017	No	No	Yes	Yes	Yes	Yes	No	Yes	No	5
Maalouf et al, 2016	Yes	Yes	Yes	Yes	No	Yes	Yes	Yes	No	7
Magklara et al, 2015	Yes	Yes	Yes	Yes	Yes	Yes	Yes	Yes	Yes	9
Meredith et al, 2009	No	No	Yes	Yes	Yes	Yes	No	Yes	Yes	6
Merikangas et al, 2010	Yes	Yes	Yes	No	No	Yes	No	Yes	No	5
Merikangas et al, 2011	Yes	No	Yes	Yes	Yes	Yes	Yes	Yes	Yes	8
Niermann et al, 2021	Yes	Yes	Yes	Yes	No	Yes	Yes	Yes	No	7
Reardon et al, 2020	Yes	Yes	Yes	Yes	No	Yes	No	Yes	Unclear	6
Sawyer et al, 2004	Yes	Yes	Yes	Yes	No	Yes	No	Yes	No	6
Sawyer et al, 2018	Yes	Unclear	Yes	Yes	No	Yes	No	Yes	No	5
Stiffman et al, 1988	Yes	Unclear	Yes	Yes	Yes	Yes	No	Yes	Yes	7
Tanielian et al, 2009	No	No	Yes	Yes	Yes	Yes	No	Yes	Unclear	5
Vicente et al, 2012	Yes	Yes	Yes	No	Yes	Yes	Yes	Yes	Yes	8
Wagner et al, 2017	Yes	No	Yes	Yes	Yes	Yes	No	Yes	No	6
Wu et al, 1999	Yes	Yes	Yes	Yes	Unclear	Yes	No	Yes	Unclear	6
Wu et al, 2001	Yes	Unclear	Yes	Yes	Unclear	Yes	Yes	Yes	Unclear	6
Zhang et al, 2021	Yes	Yes	Yes	Yes	Yes	Yes	No	Yes	Unclear	7
Zhong et al, 2013	Yes	Yes	Yes	Yes	Yes	Yes	Yes	Yes	No	8
Zwaanswijk et al, 2005	No	Yes	Yes	Yes	Yes	Yes	No	Yes	No	6



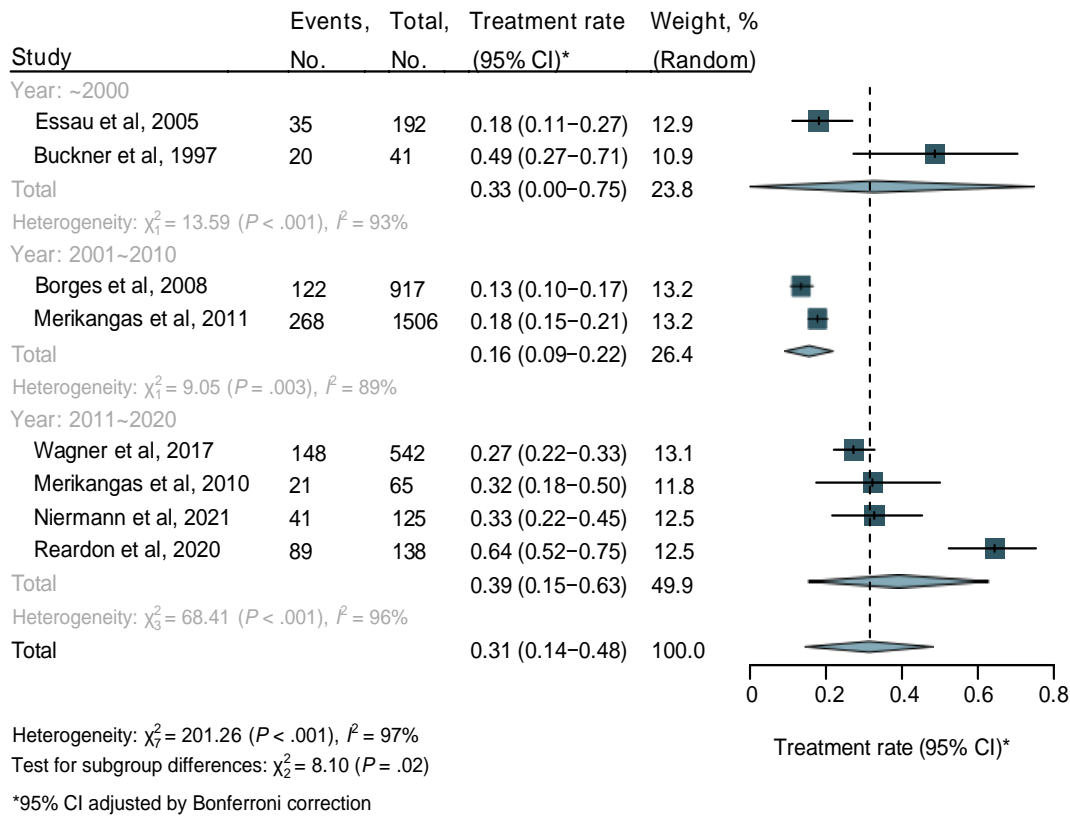
eFigure 1. Treatment rates for any mental disorder by year of data collection



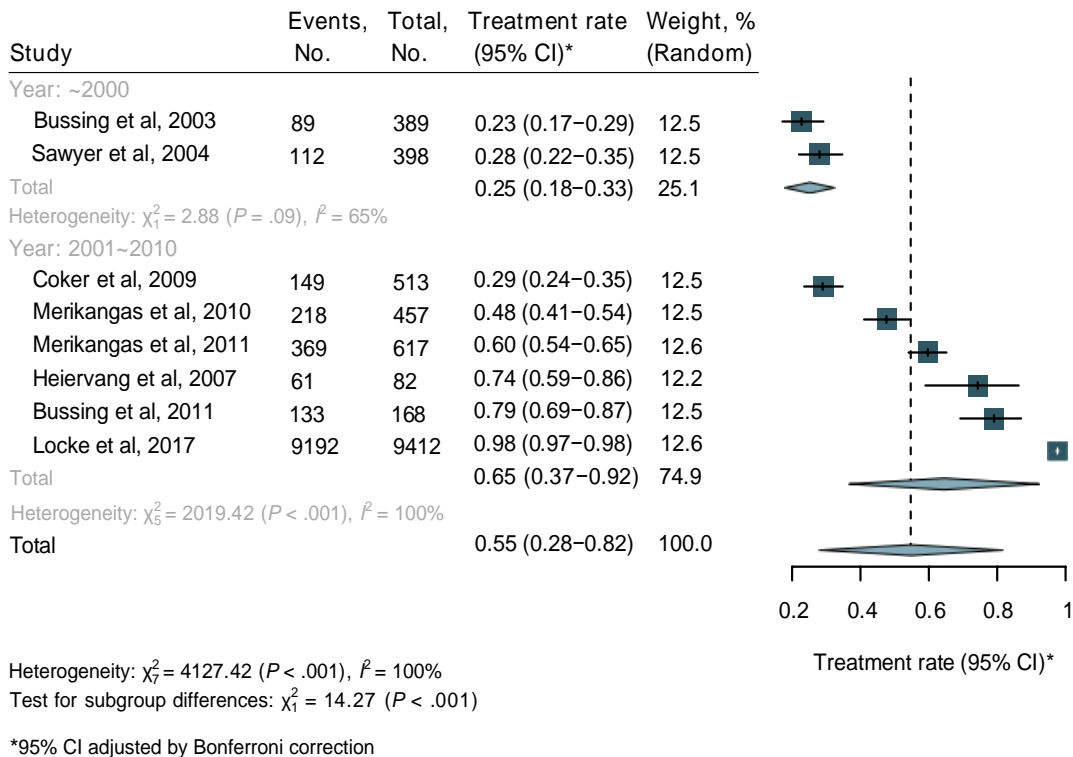
Heterogeneity: $\chi^2_{17} = 578.37$ ($P < .001$), $I^2 = 97\%$
 Test for subgroup differences: $\chi^2_2 = 3.41$ ($P = .18$)

*95% CI adjusted by Bonferroni correction

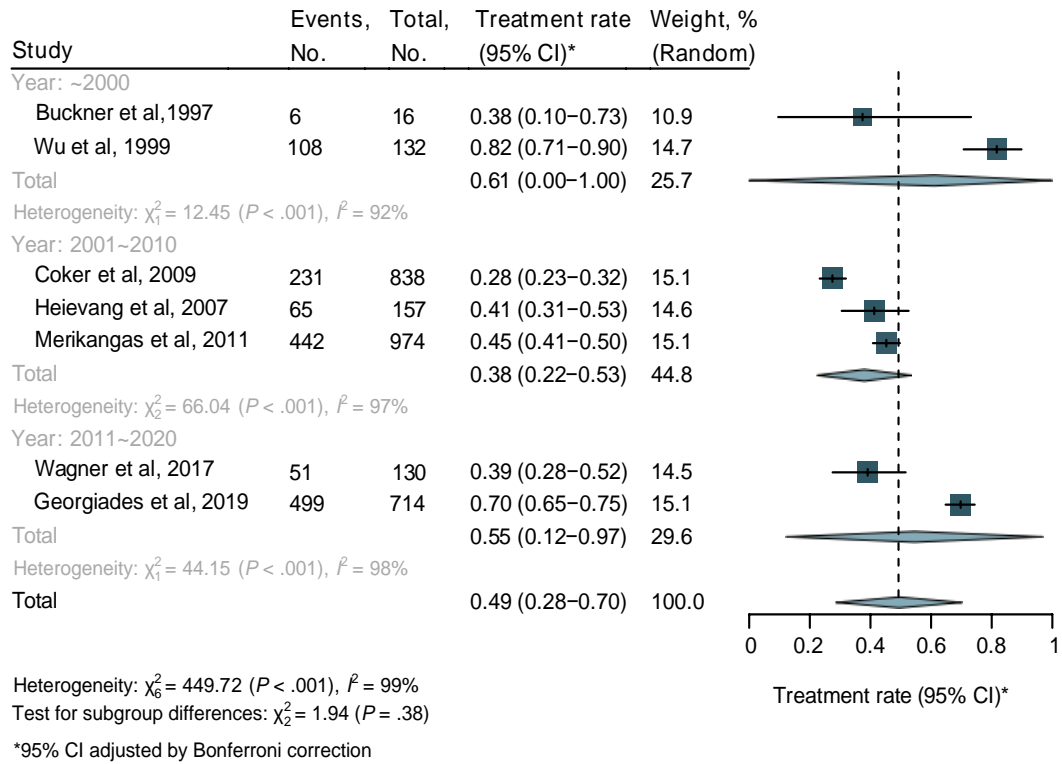
eFigure 2. Treatment rates for depressive disorders by year of data collection



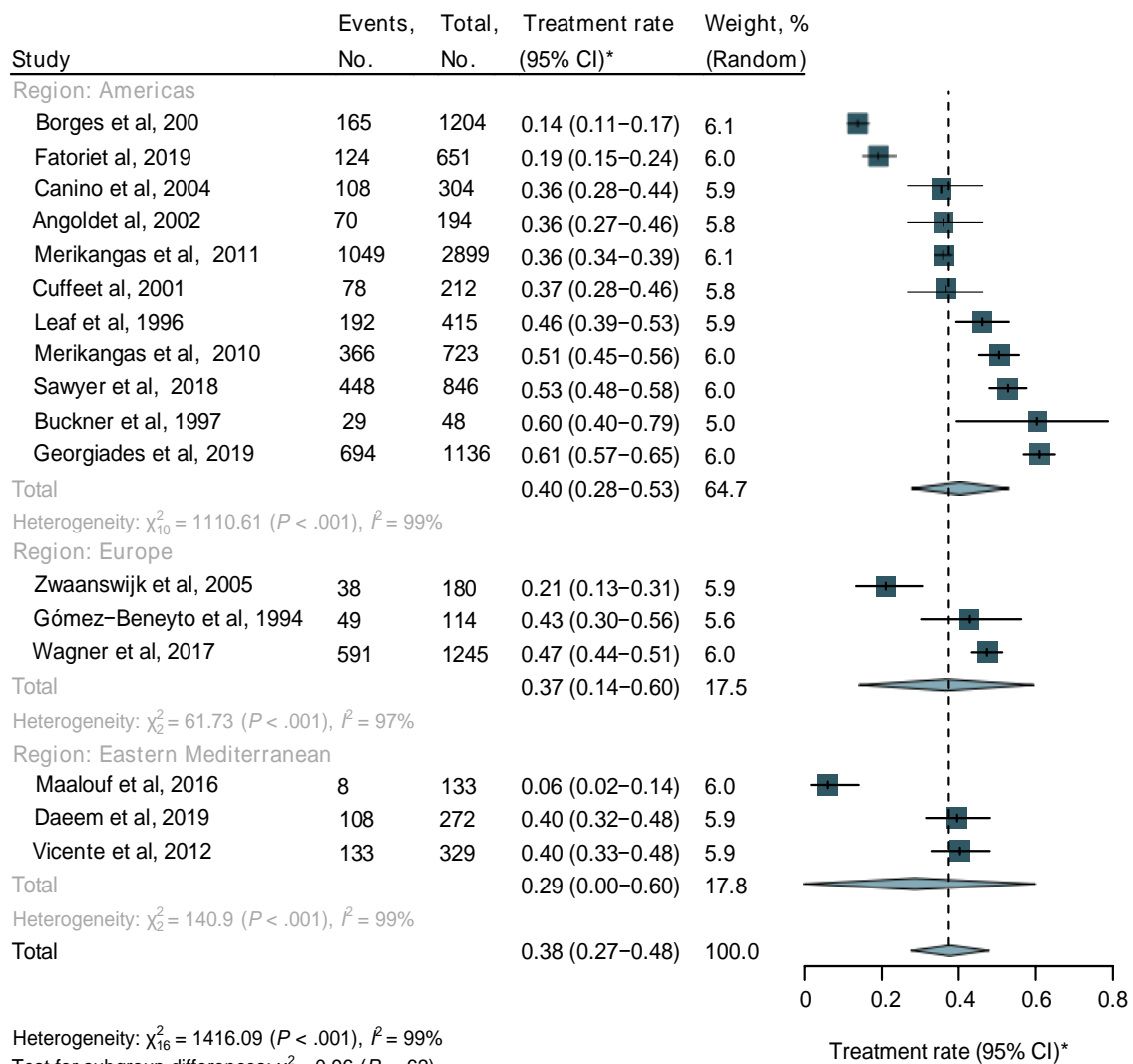
eFigure 3. Treatment rates for anxiety disorders by year of data collection



eFigure 4. Treatment rates for ADHD by year of data collection



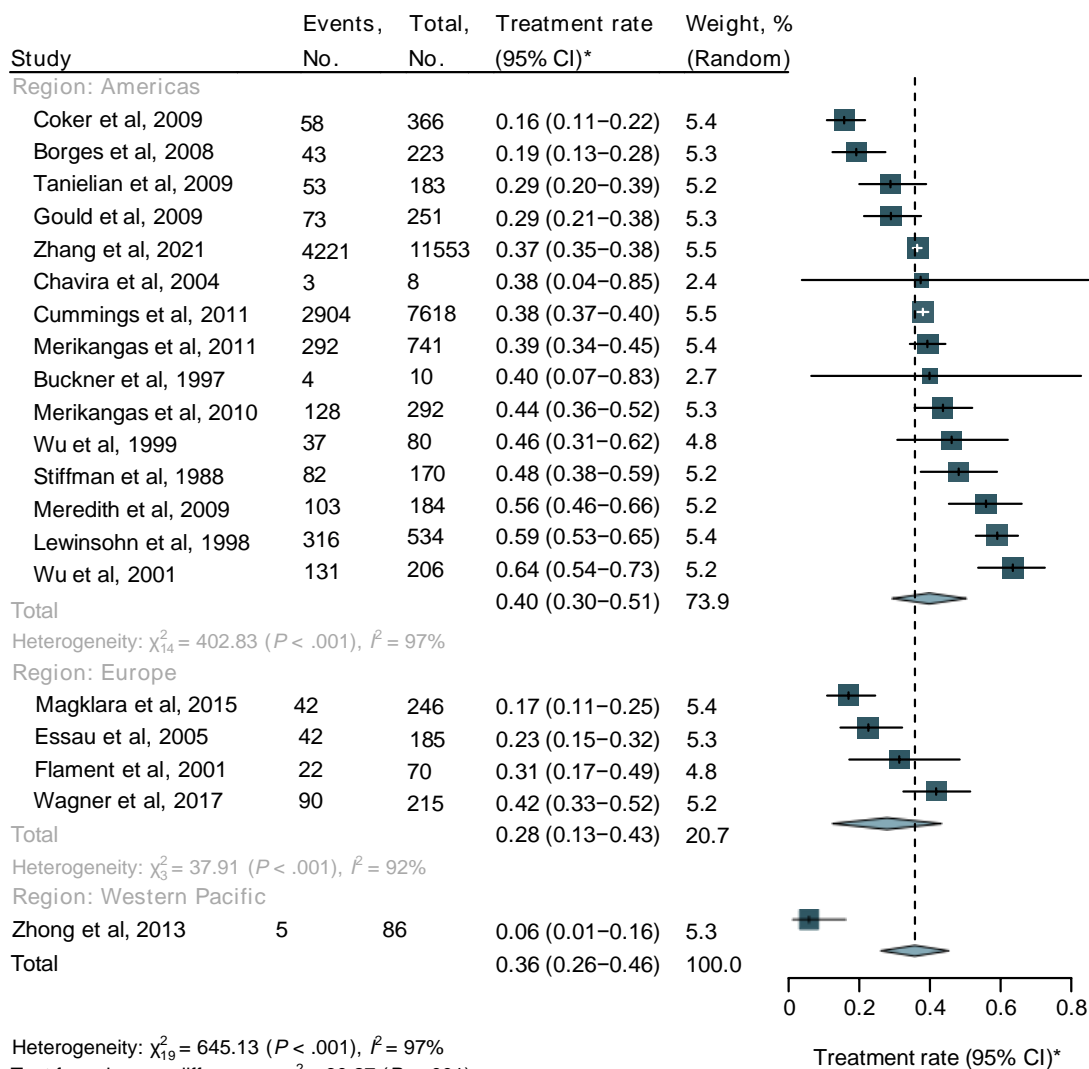
eFigure 5. Treatment rates for behavior disorders by year of data collection



Heterogeneity: $\chi^2_{16} = 1416.09$ ($P < .001$), $I^2 = 99\%$
 Test for subgroup differences: $\chi^2_2 = 0.96$ ($P = .62$)

*95% CI adjusted by Bonferroni correction

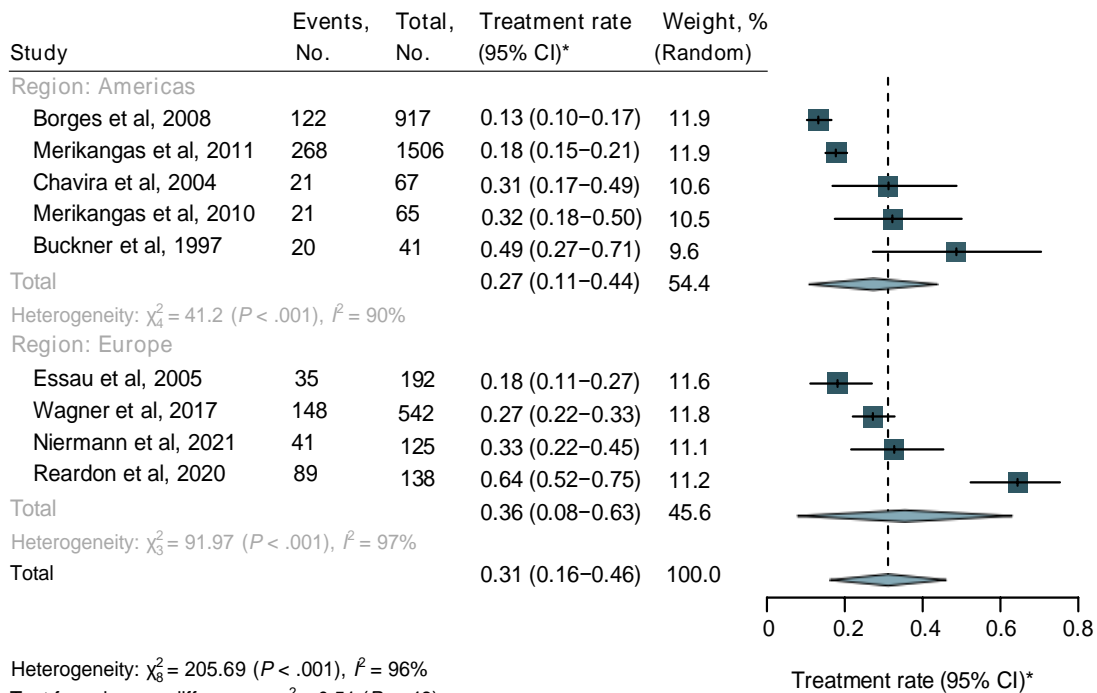
eFigure 6. Treatment rates for any mental disorder by regions



Heterogeneity: $\chi^2_{19} = 645.13$ ($P < .001$), $I^2 = 97\%$
 Test for subgroup differences: $\chi^2_2 = 60.27$ ($P < .001$)

*95% CI adjusted by Bonferroni correction

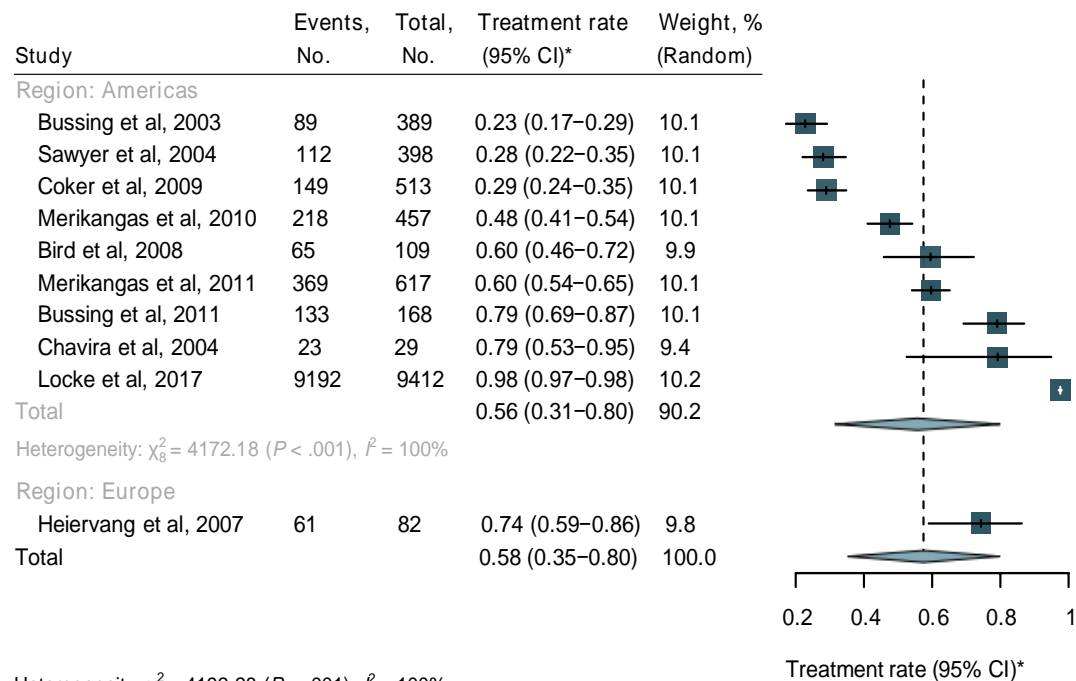
eFigure 7. Treatment rates for depressive disorders by regions



Heterogeneity: $\chi^2_8 = 205.69$ ($P < .001$), $I^2 = 96\%$
 Test for subgroup differences: $\chi^2_1 = 0.51$ ($P = .48$)

*95% CI adjusted by Bonferroni correction

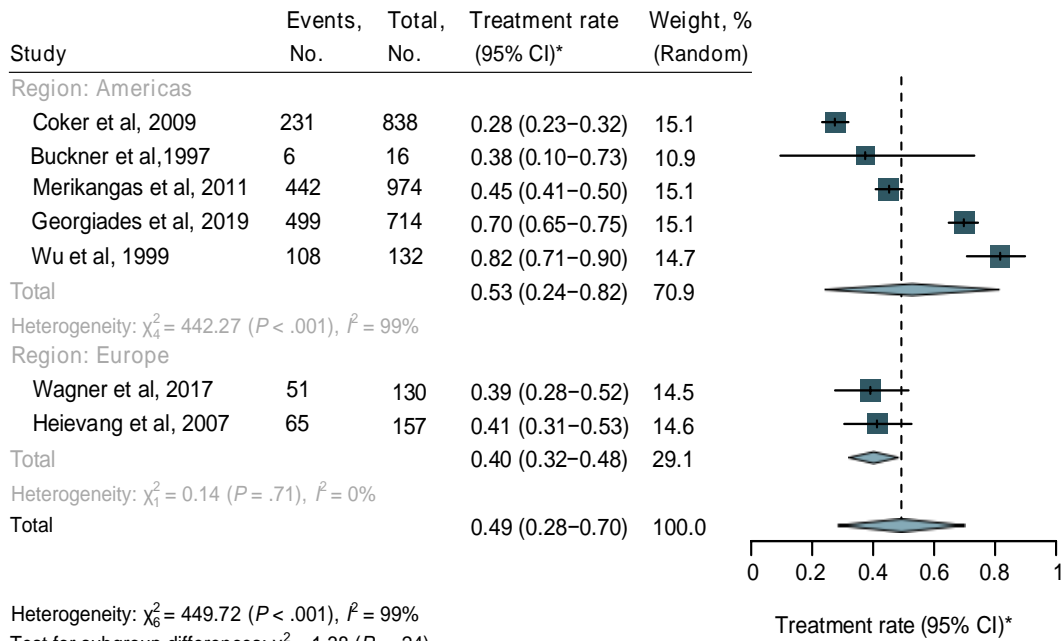
eFigure 8. Treatment rates for anxiety disorders by regions



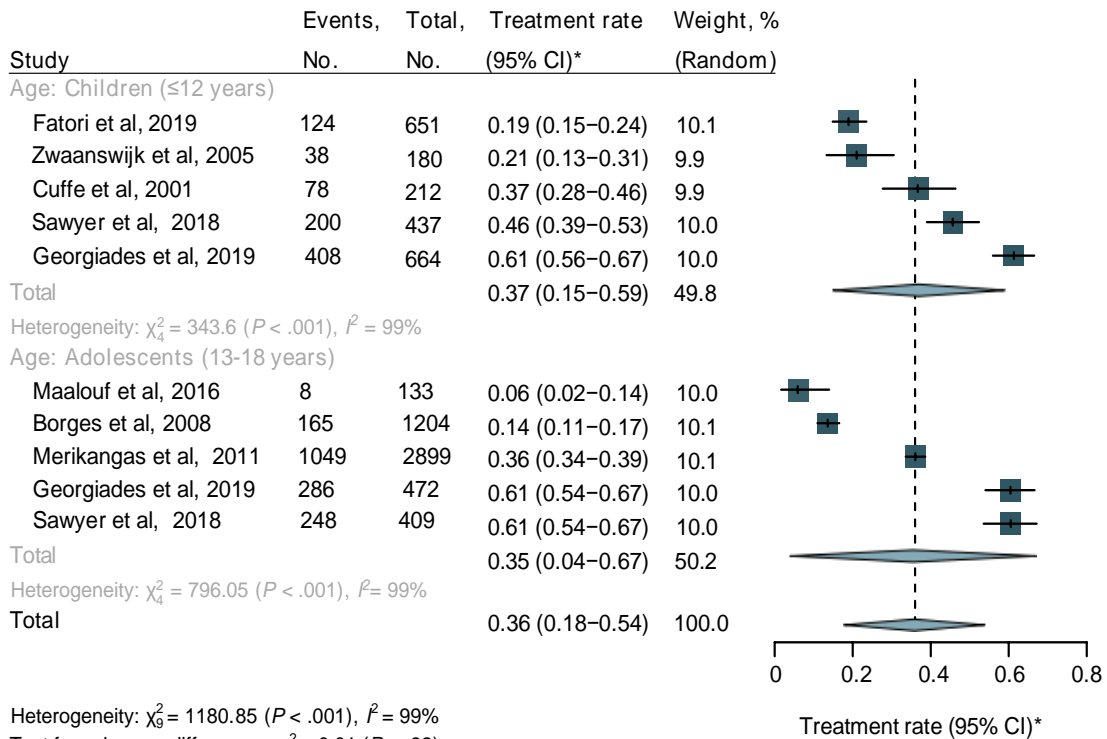
Heterogeneity: $\chi^2_9 = 4192.28$ ($P < .001$), $I^2 = 100\%$
 Test for subgroup differences: $\chi^2_1 = 3.46$ ($P = .06$)

*95% CI adjusted by Bonferroni correction

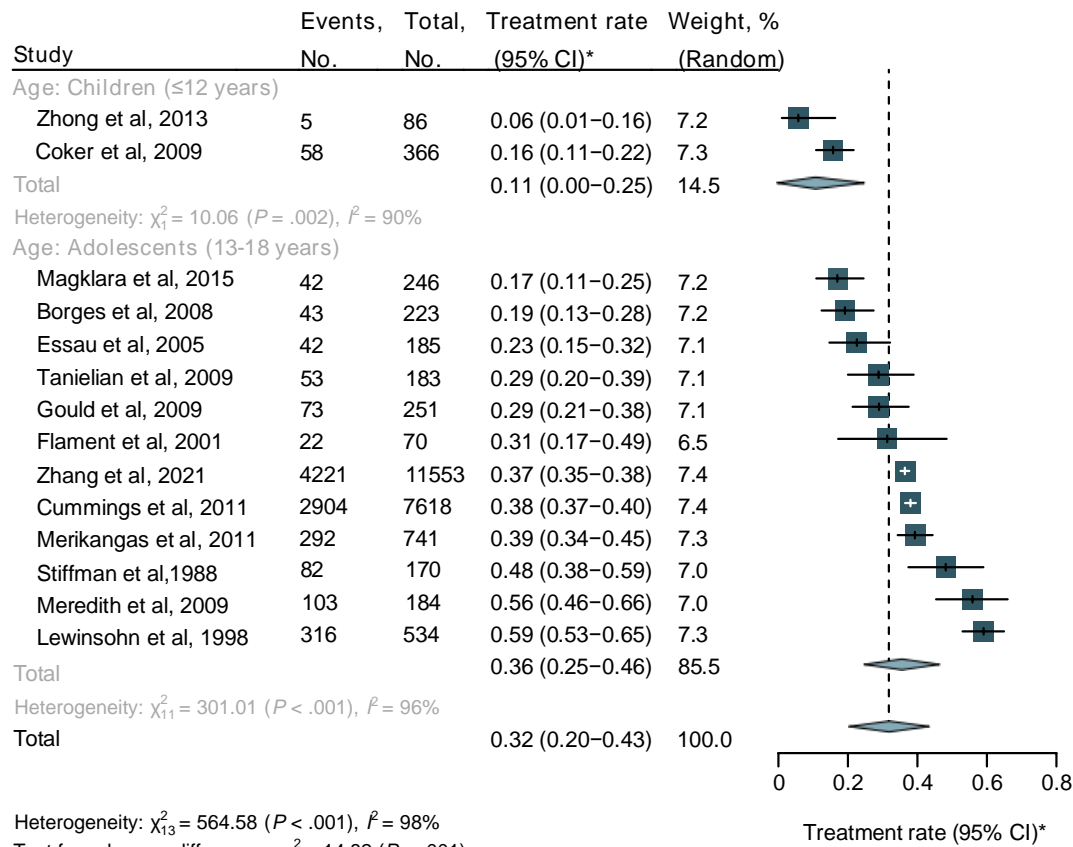
eFigure 9. Treatment rates for ADHD by regions



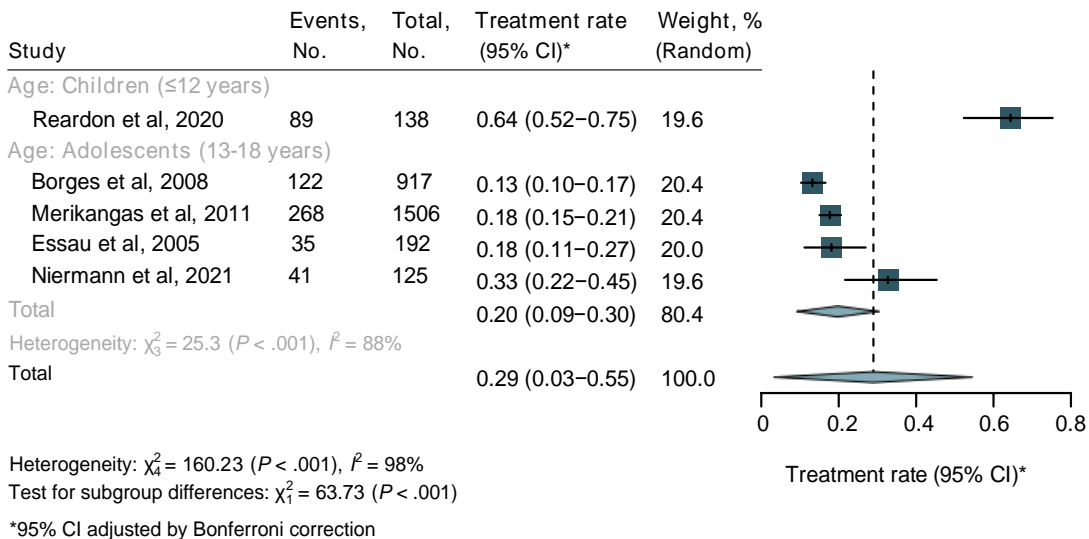
eFigure 10. Treatment rates for behavior disorders by regions



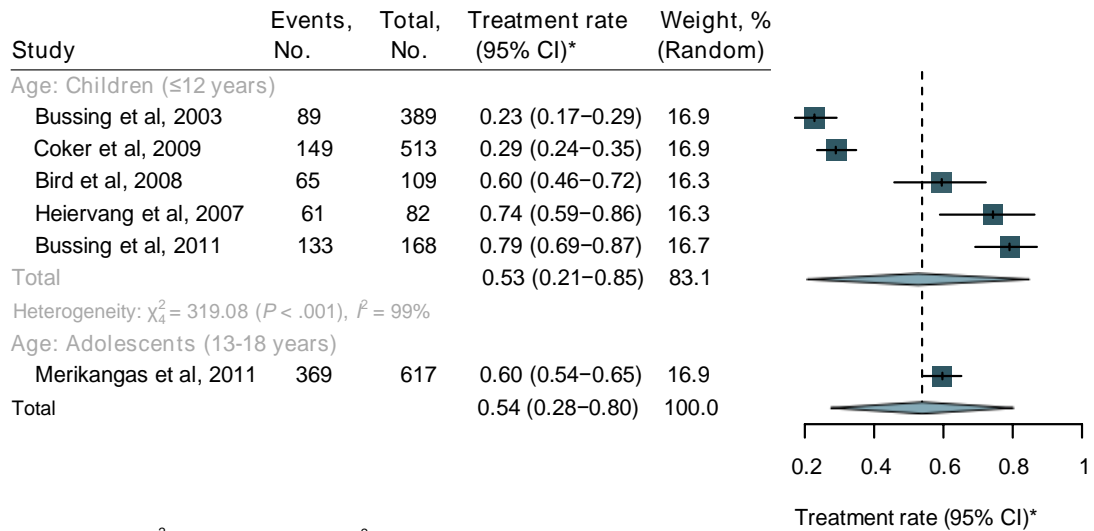
eFigure 11. Treatment rates for any mental disorder by age groups



eFigure 12. Treatment rates for depressive disorders by age groups

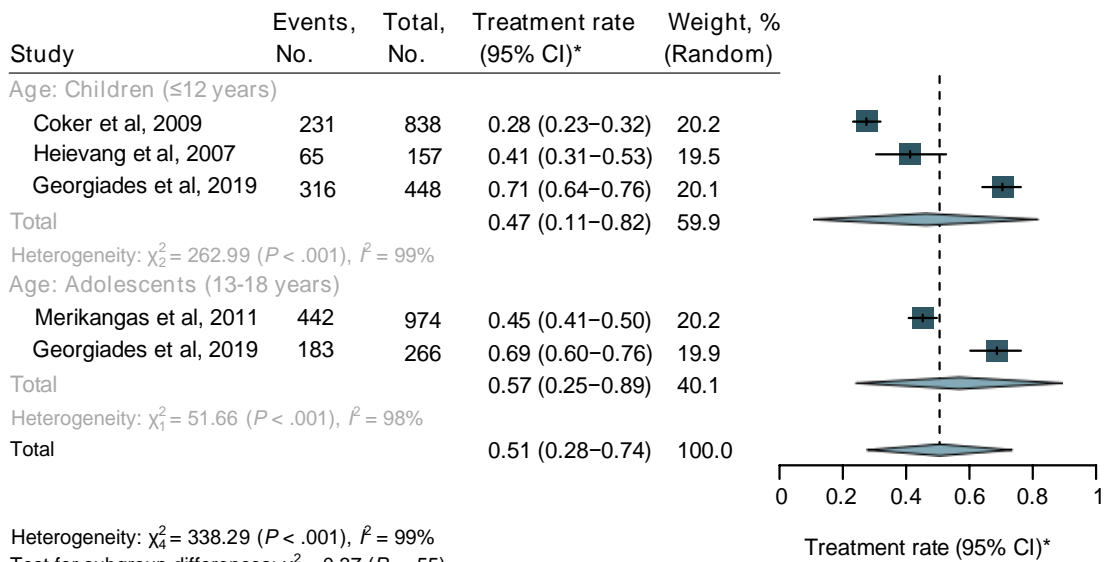


eFigure 13. Treatment rates for anxiety disorders by age groups



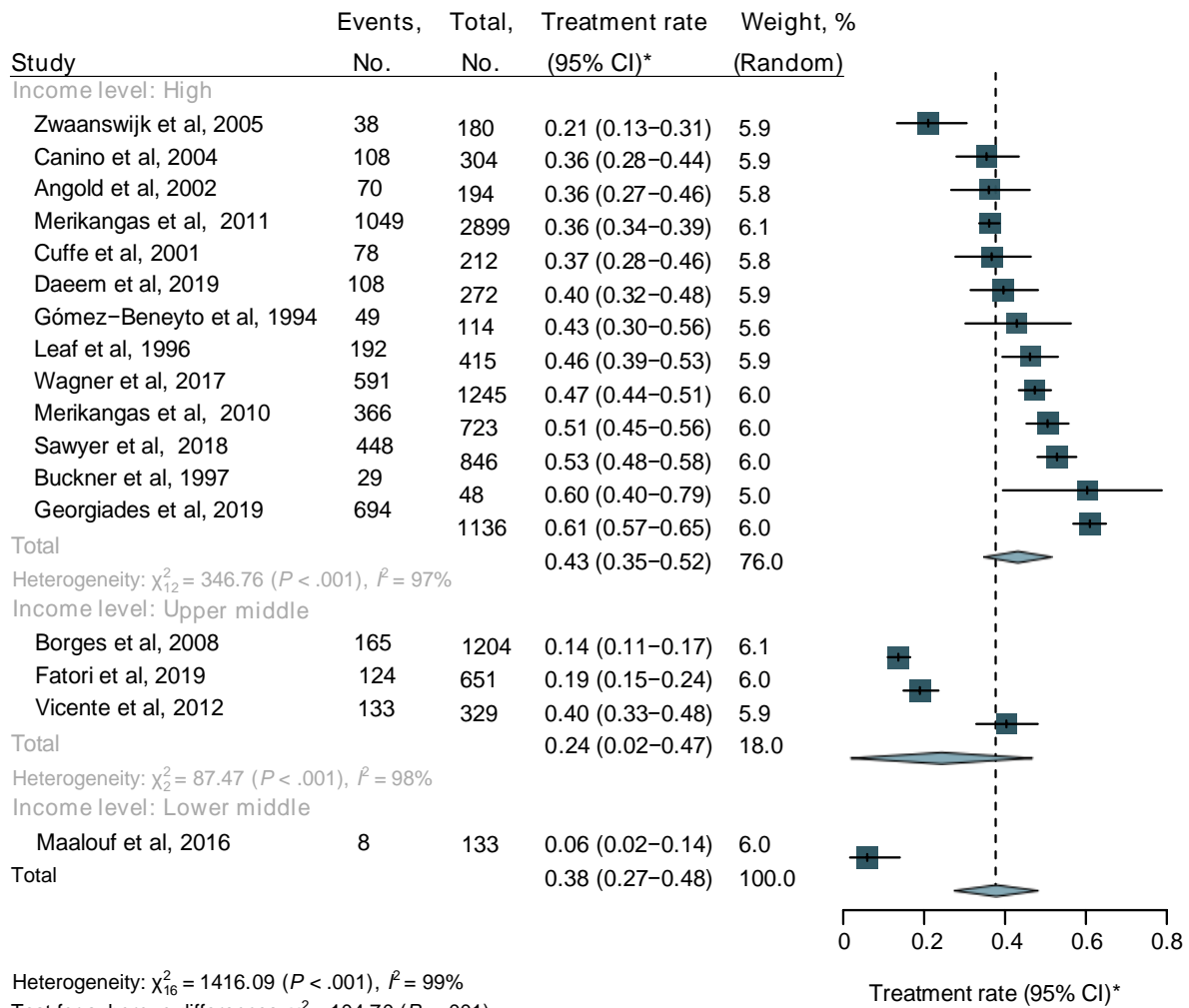
Heterogeneity: $\chi^2_5 = 393.15$ ($P < .001$), $I^2 = 99\%$
 Test for subgroup differences: $\chi^2_1 = 0.35$ ($P = .55$)
 *95% CI adjusted by Bonferroni correction

eFigure 14. Treatment rates for ADHD by age groups



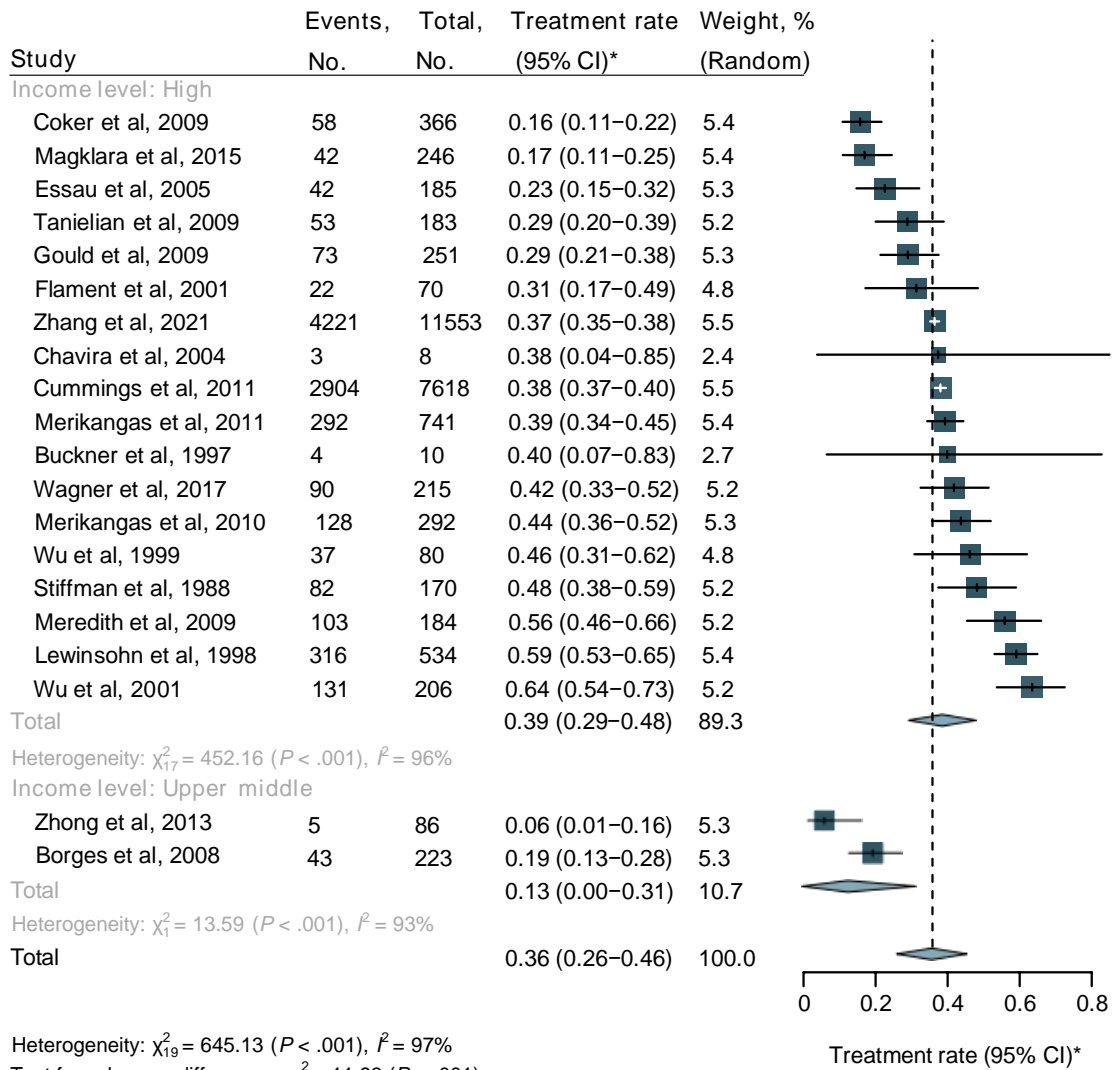
Heterogeneity: $\chi^2_4 = 338.29$ ($P < .001$), $I^2 = 99\%$
 Test for subgroup differences: $\chi^2_1 = 0.37$ ($P = .55$)
 *95% CI adjusted by Bonferroni correction

eFigure 15. Treatment rates for behavior disorders by age groups



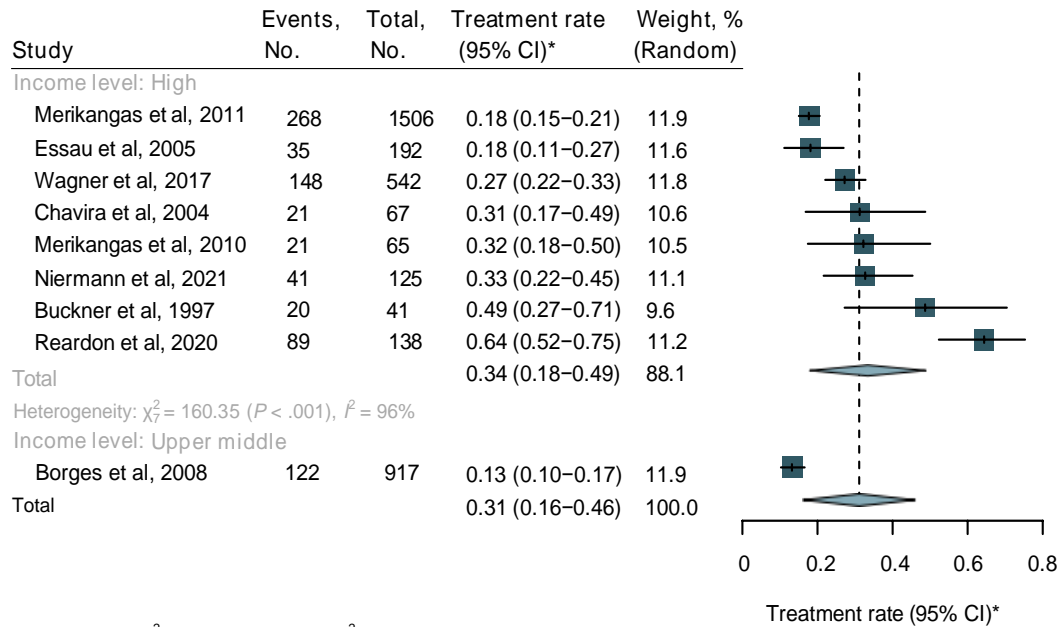
Heterogeneity: $\chi^2_{16} = 1416.09$ ($P < .001$), $I^2 = 99\%$
 Test for subgroup differences: $\chi^2_2 = 104.70$ ($P < .001$)
 *95% CI adjusted by Bonferroni correction

eFigure 16. Treatment rates for any mental disorder by income groups



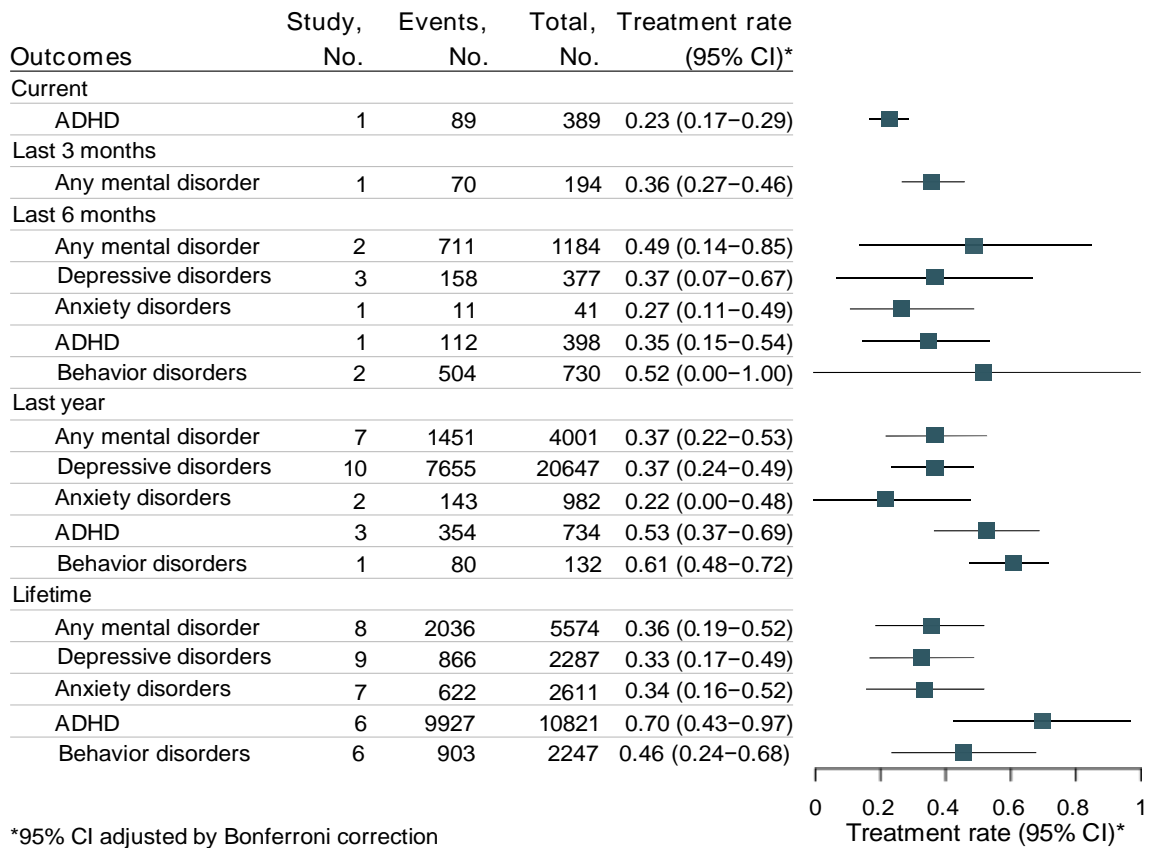
Heterogeneity: $\chi^2_{19} = 645.13$ ($P < .001$), $I^2 = 97\%$
 Test for subgroup differences: $\chi^2_1 = 11.93$ ($P < .001$)
 *95% CI adjusted by Bonferroni correction

eFigure 17. Treatment rates for depressive disorders by income groups



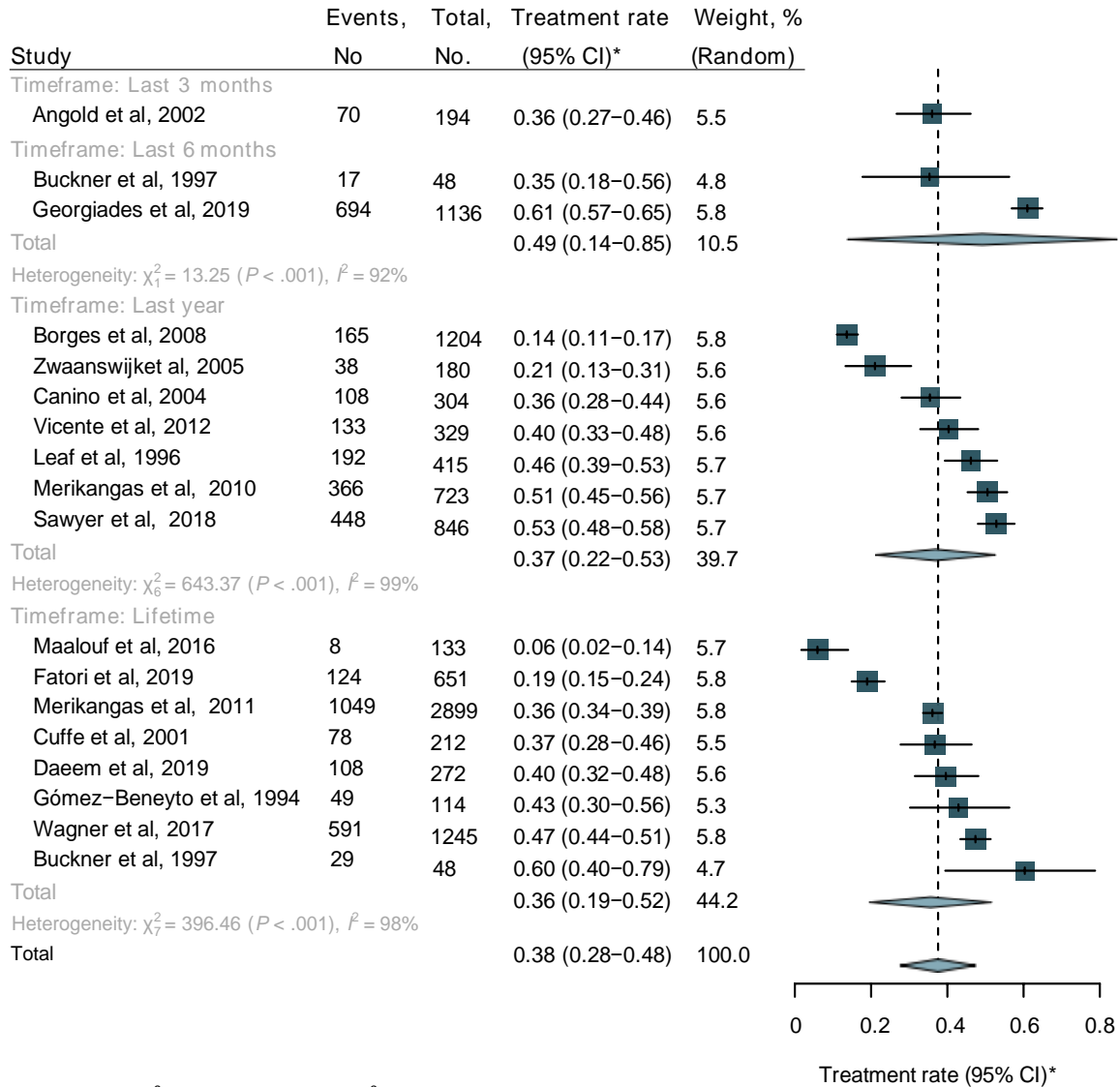
Heterogeneity: $\chi^2 = 205.69$ ($P < .001$), $I^2 = 96\%$
 Test for subgroup differences: $\chi^2 = 12.61$ ($P < .001$)
 *95% CI adjusted by Bonferroni correction

eFigure 18. Treatment rates for anxiety disorders by income groups



*95% CI adjusted by Bonferroni correction

eFigure 19. Subgroup by timeframe

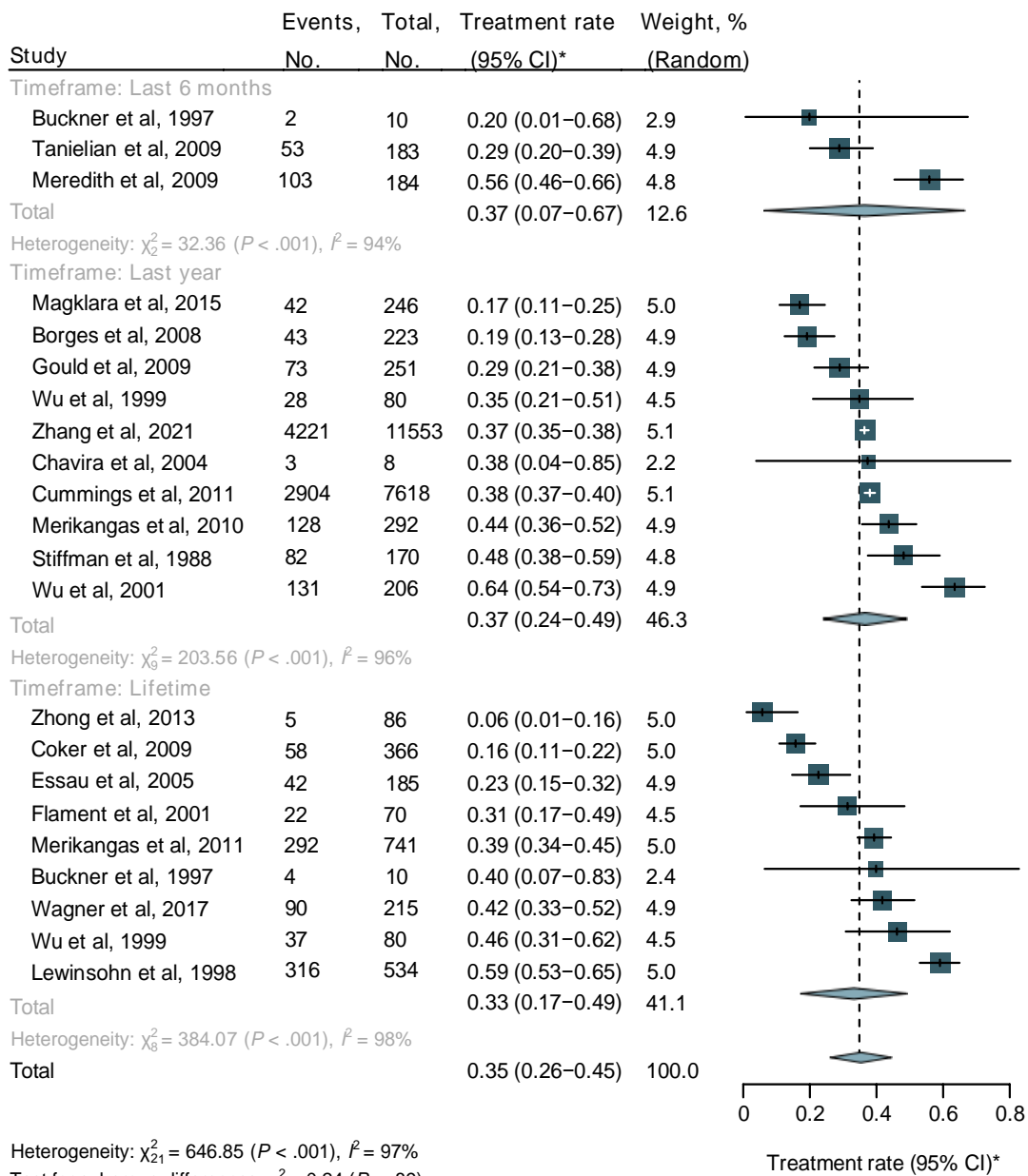


Heterogeneity: $\chi^2_{17} = 1416.10$ ($P < .001$), $I^2 = 99\%$

Test for subgroup differences: $\chi^2_3 = 1.02$ ($P = .80$)

*95% CI adjusted by Bonferroni correction

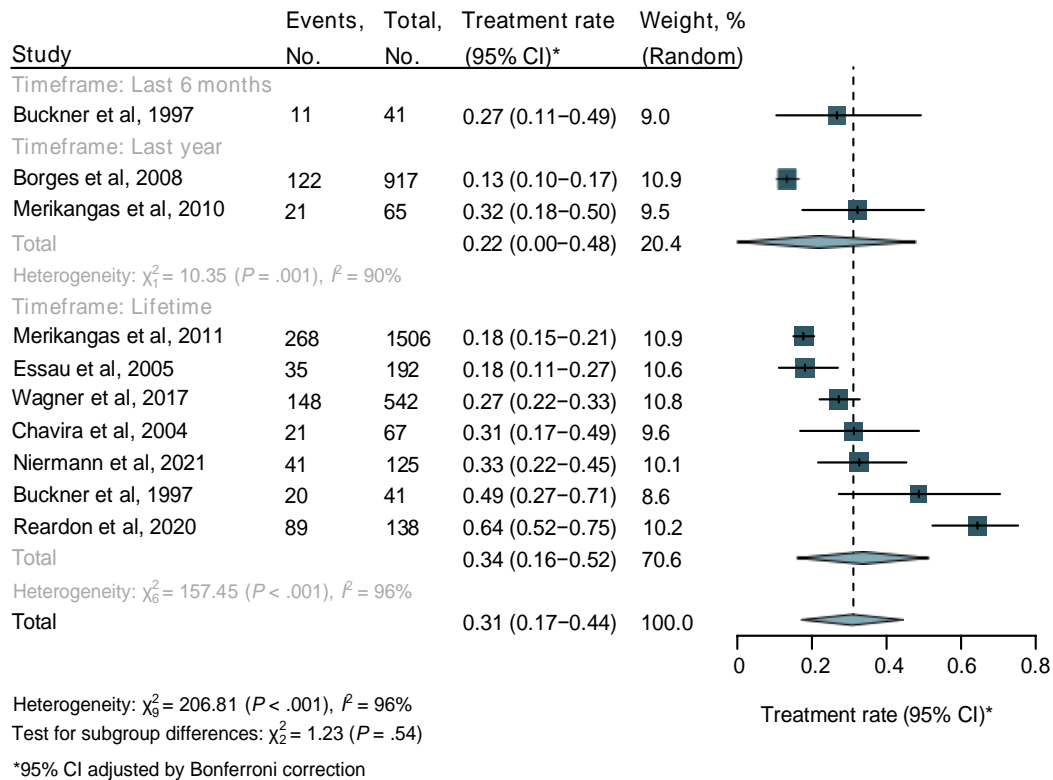
eFigure 20. Treatment rates for any mental disorder by timeframes



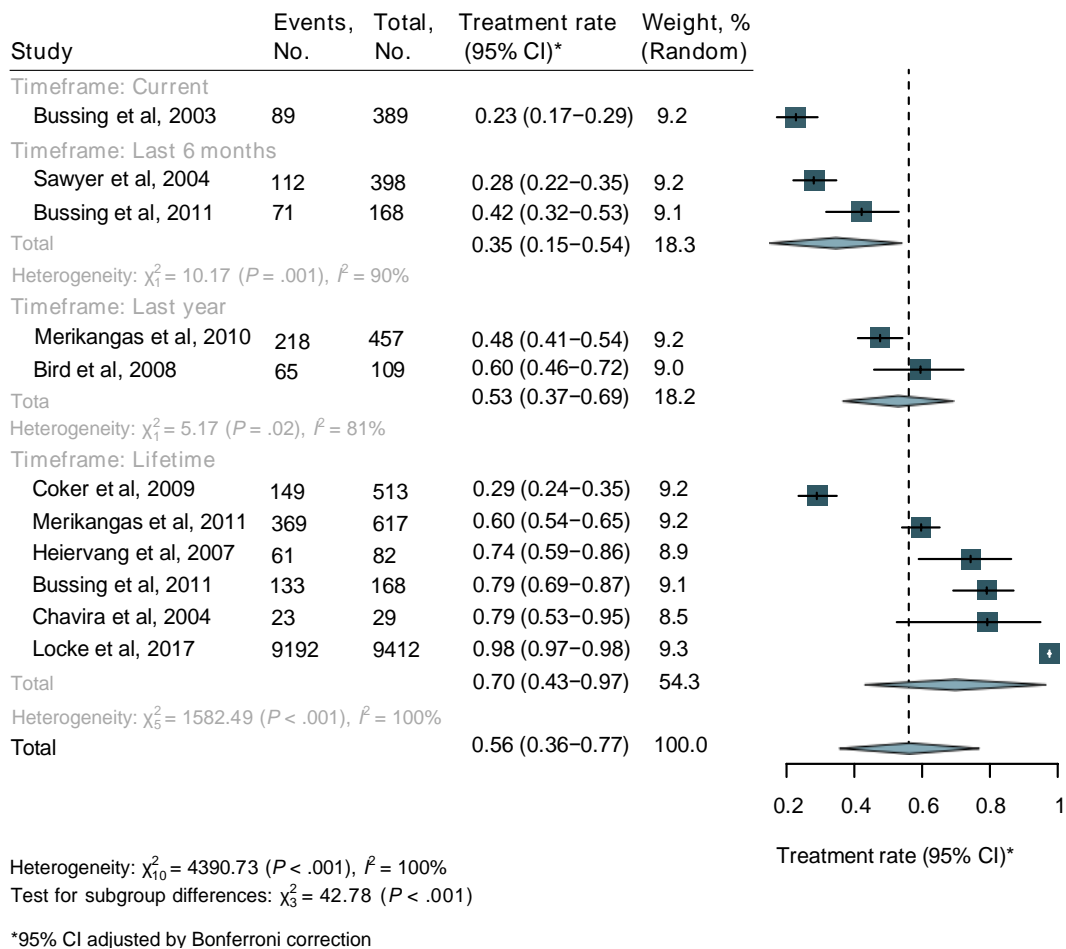
Heterogeneity: $\chi^2_{21} = 646.85$ ($P < .001$), $I^2 = 97\%$
 Test for subgroup differences: $\chi^2_2 = 0.24$ ($P = .89$)

*95% CI adjusted by Bonferroni correction

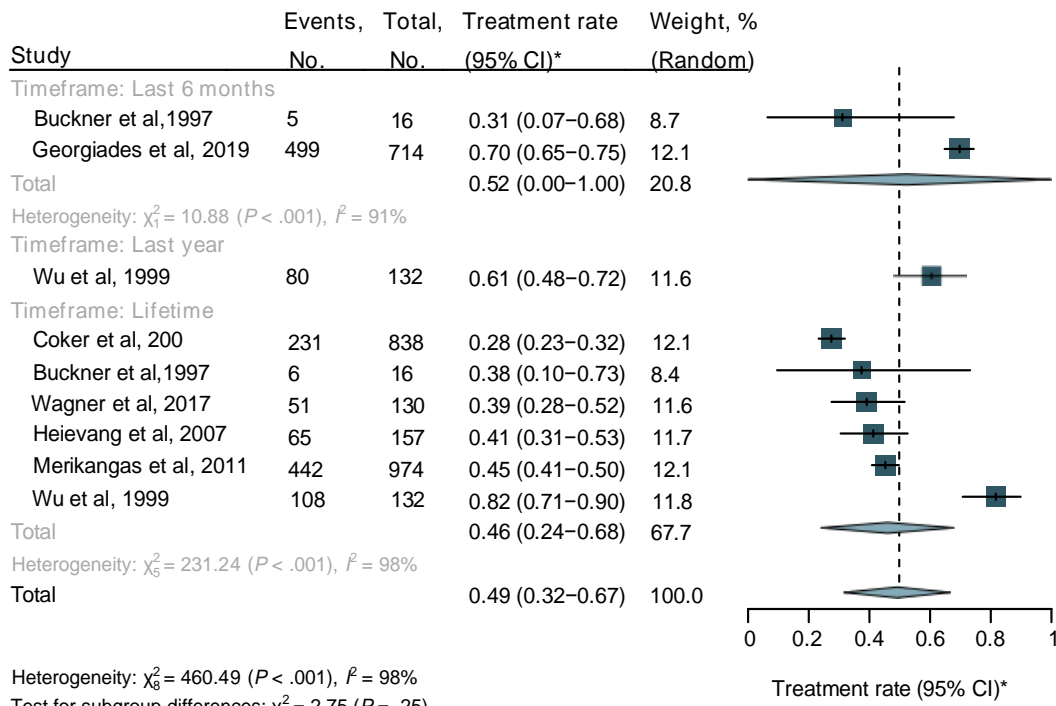
eFigure 21. Treatment rates for depressive disorders by timeframes



eFigure 22. Treatment rates for anxiety disorders by timeframes

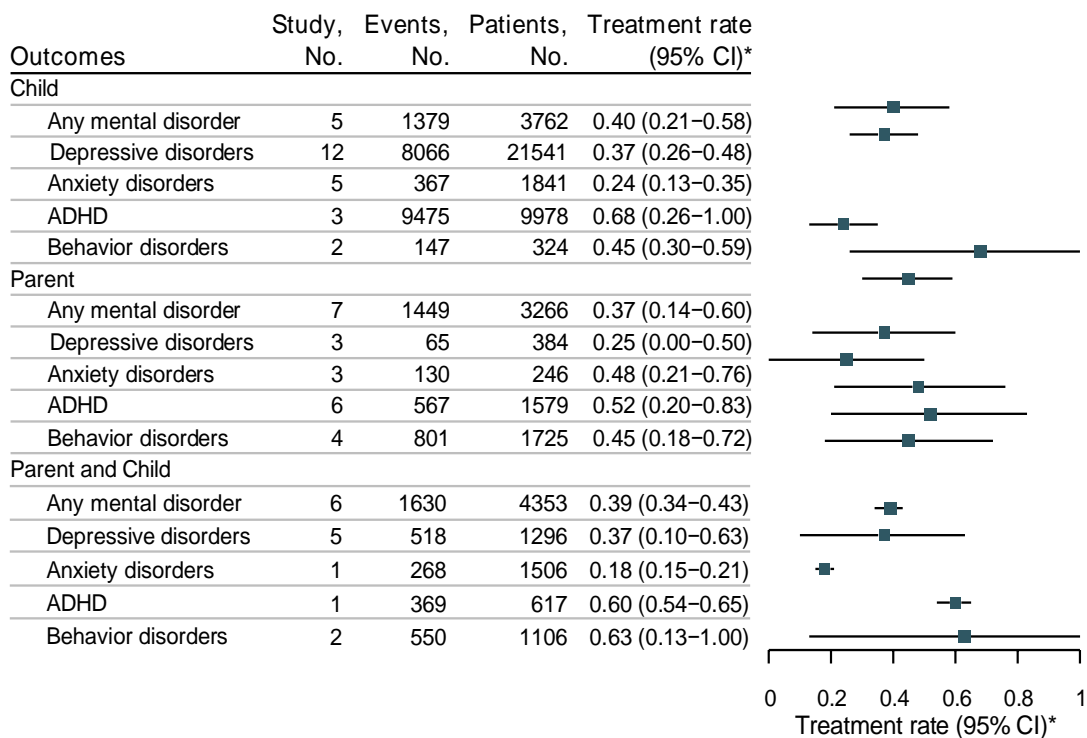


eFigure 23. Treatment rates for ADHD by timeframes



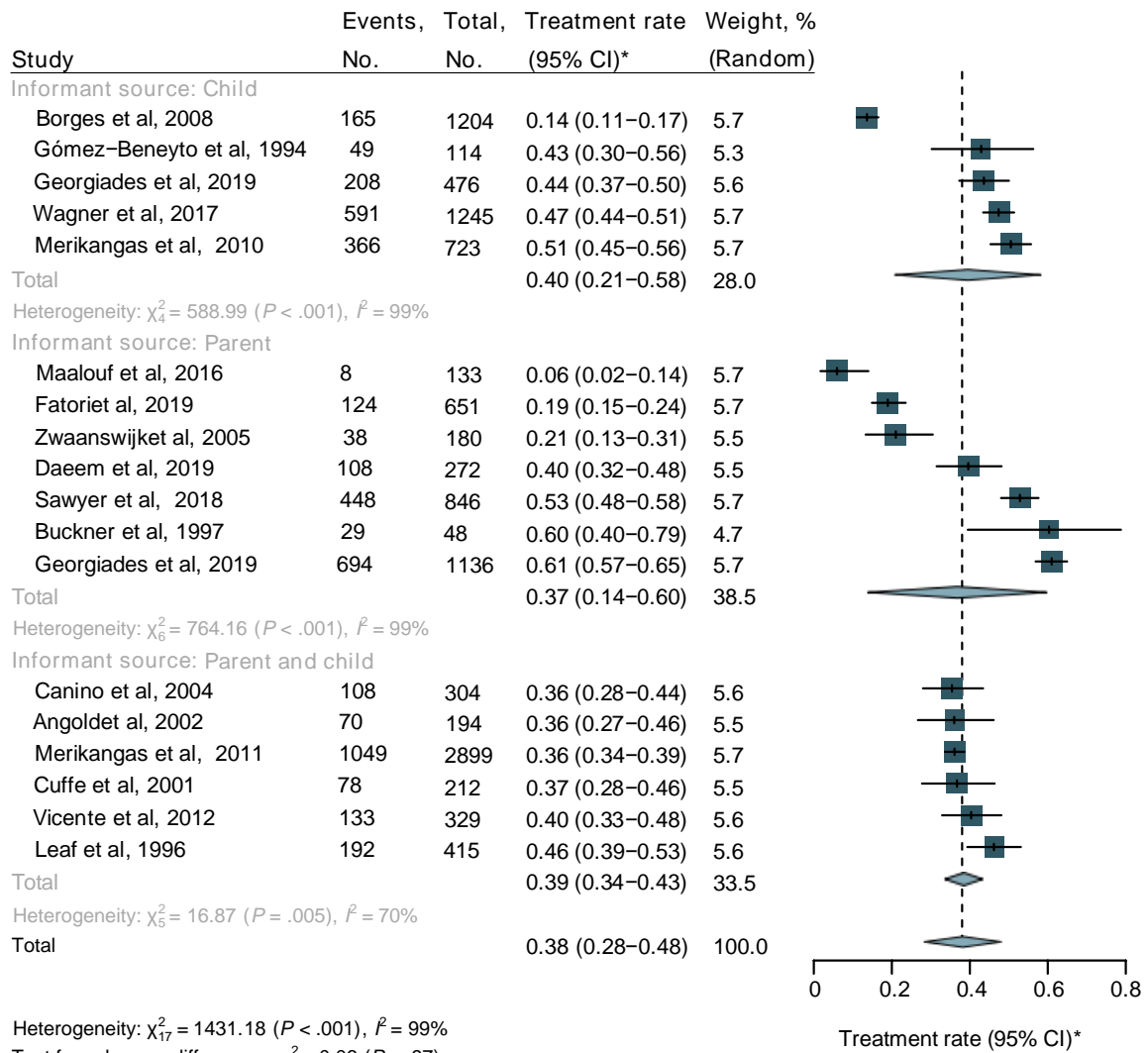
Heterogeneity: $\chi^2_5 = 460.49$ ($P < .001$), $I^2 = 98\%$
 Test for subgroup differences: $\chi^2_2 = 2.75$ ($P = .25$)
 *95% CI adjusted by Bonferroni correction

eFigure 24. Treatment rates for behavior disorders by timeframes



*95% CI adjusted by Bonferroni correction

eFigure 25. Subgroup by informant source

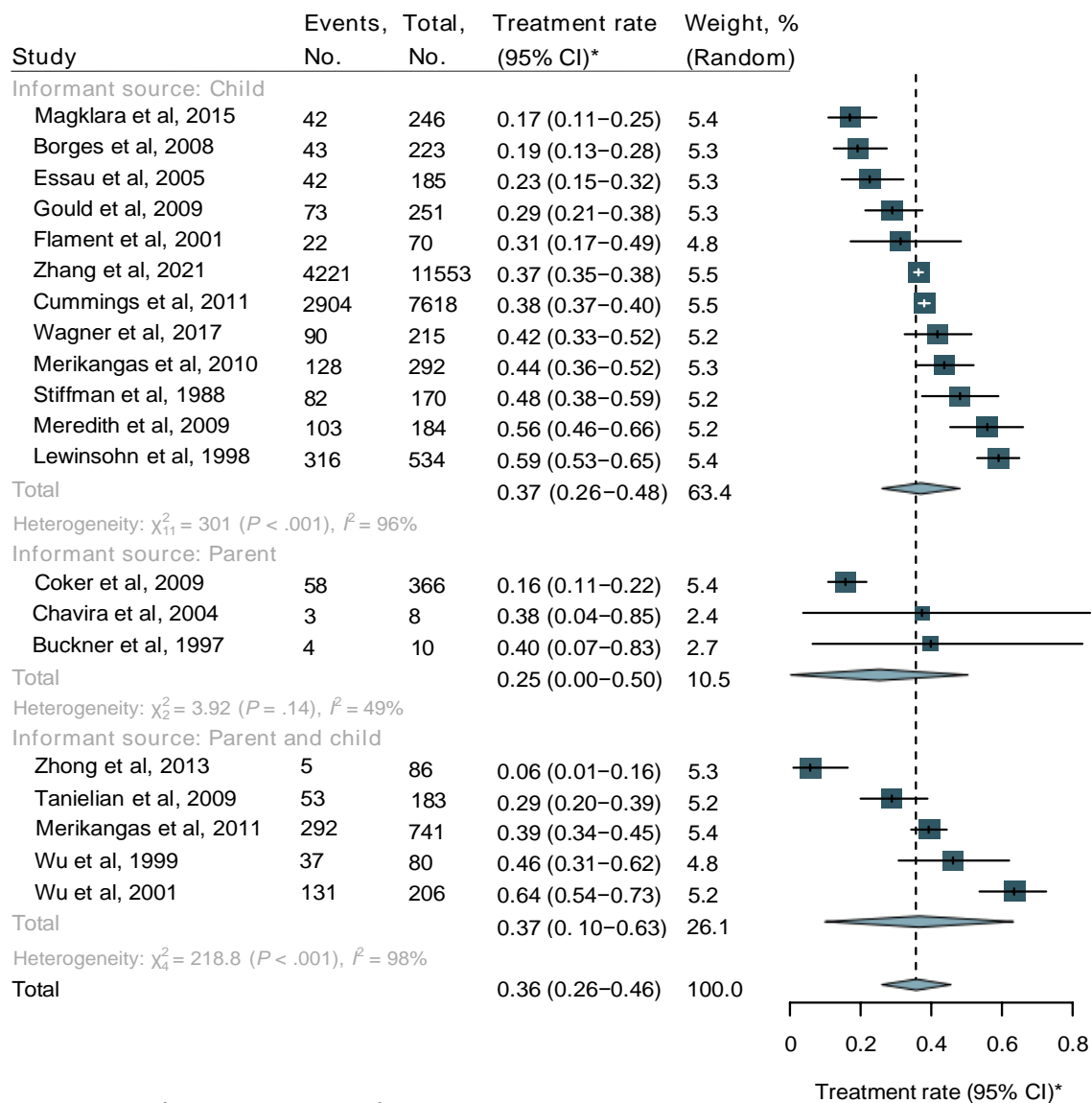


Heterogeneity: $\chi^2_{17} = 1431.18$ ($P < .001$), $I^2 = 99\%$

Test for subgroup differences: $\chi^2_2 = 0.06$ ($P = .97$)

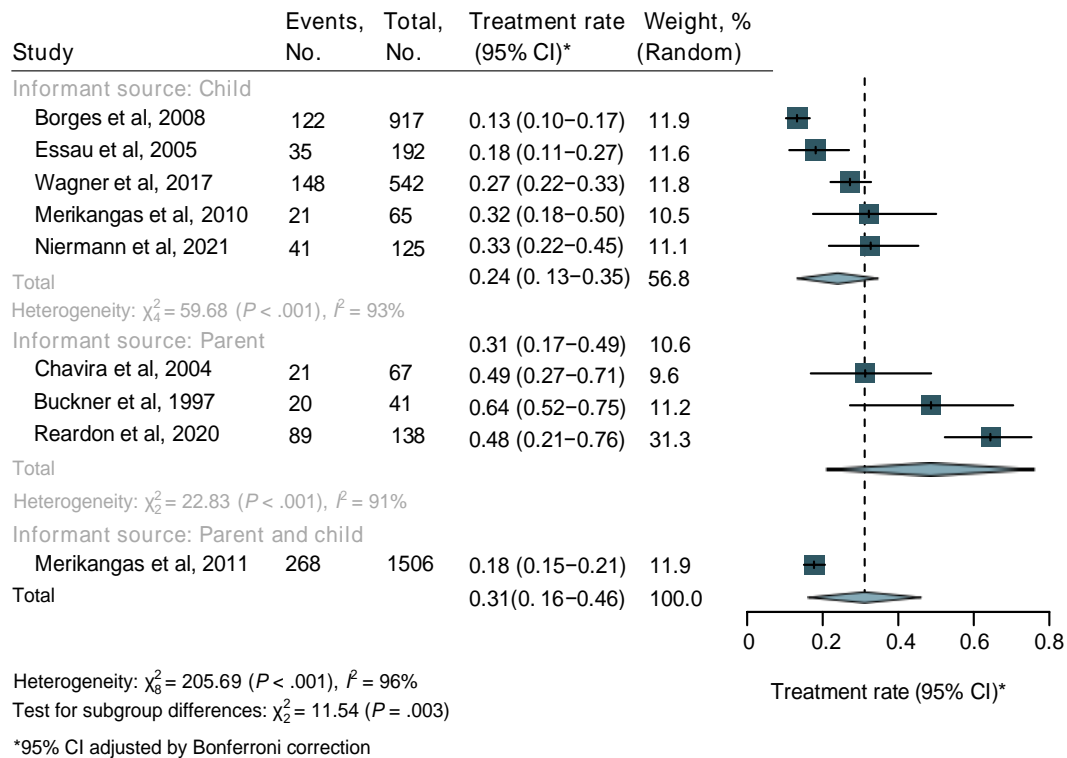
*95% CI adjusted by Bonferroni correction

eFigure 26. Treatment rates for any mental disorder by informant sources

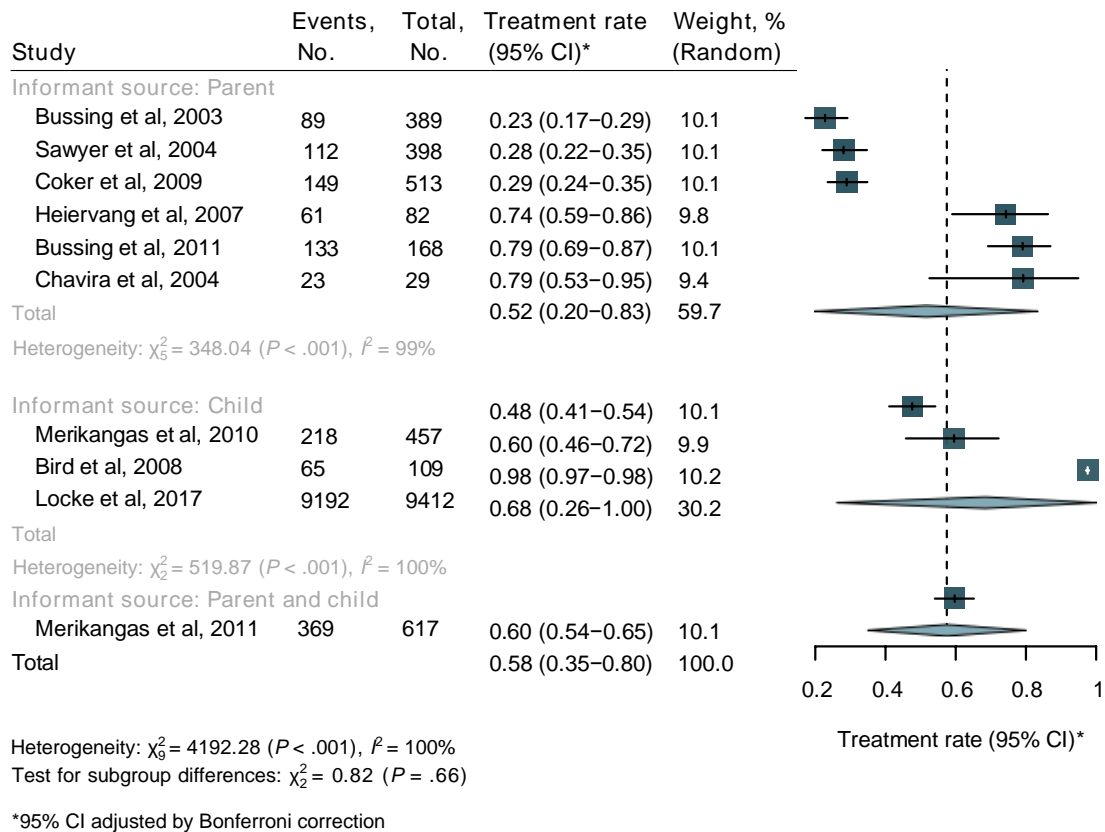


Heterogeneity: $\chi^2_{19} = 645.13$ ($P < .001$), $I^2 = 97\%$
 Test for subgroup differences: $\chi^2_2 = 1.40$ ($P = .50$)
 *95% CI adjusted by Bonferroni correction

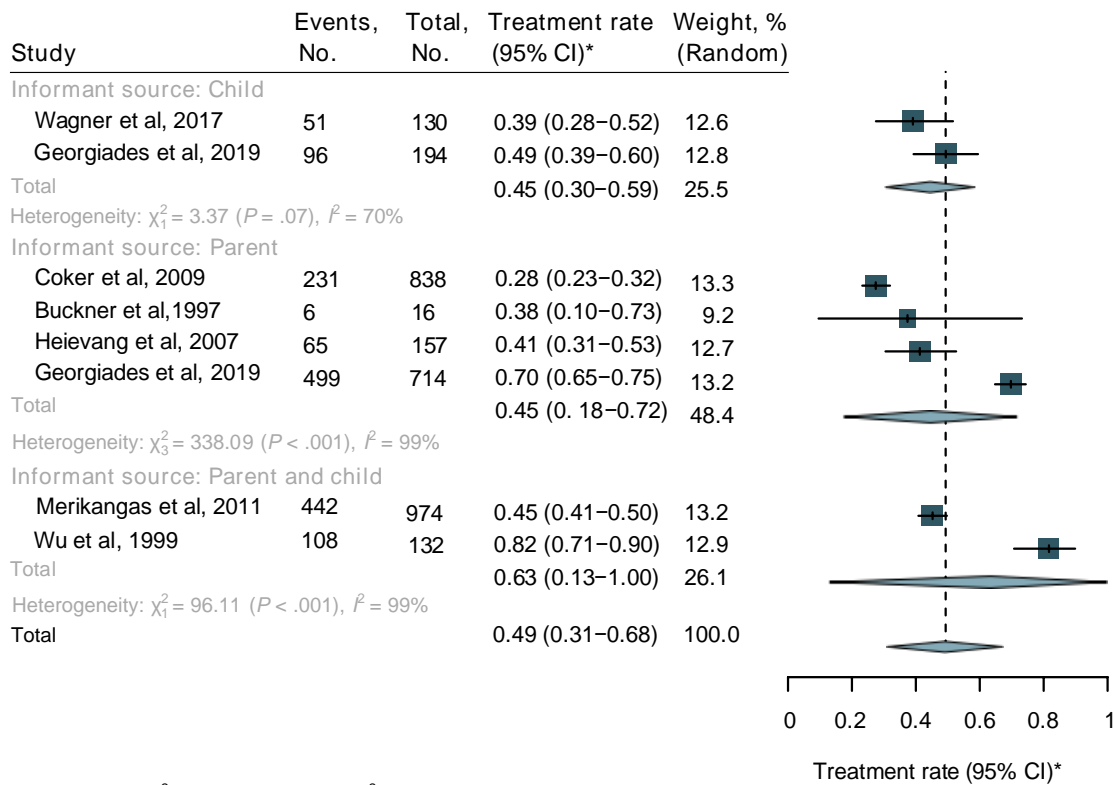
eFigure 27. Treatment rates for depressive disorders by informant sources



eFigure 28. Treatment rates for anxiety disorders by informant sources

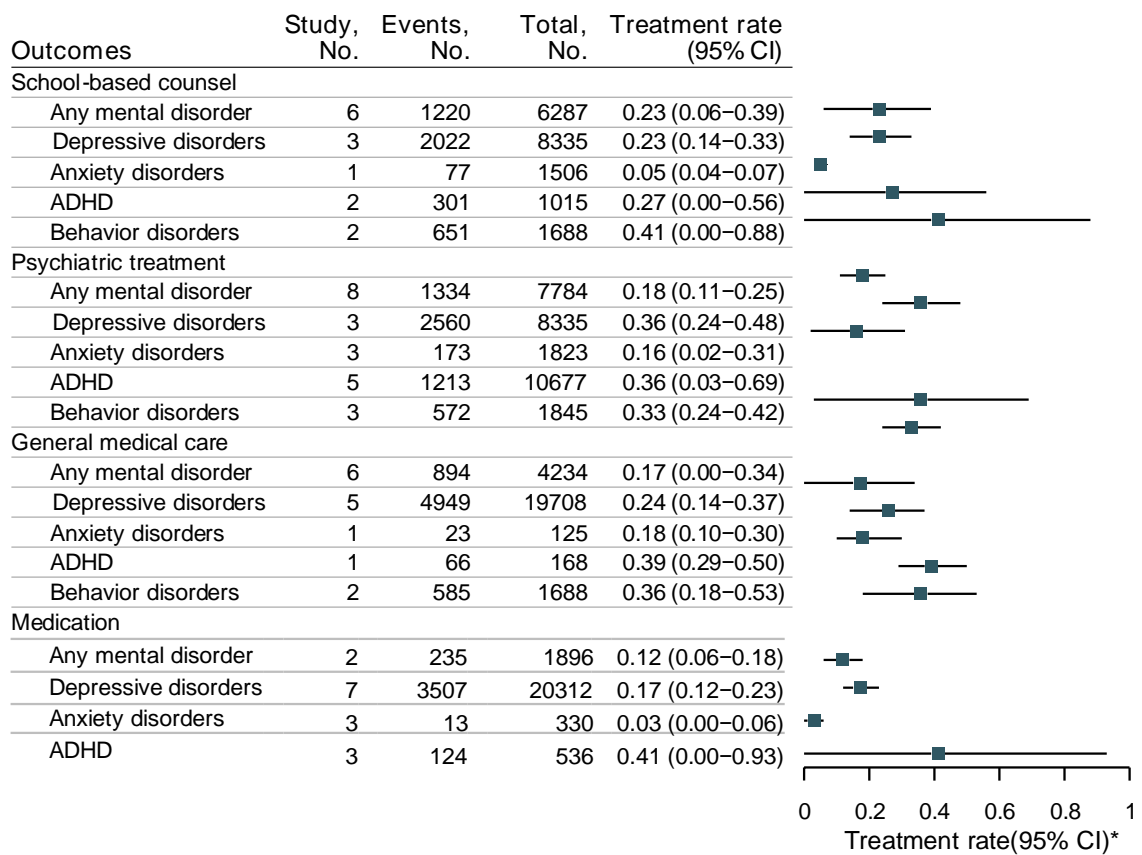


eFigure 29. Treatment rates for ADHD by informant sources



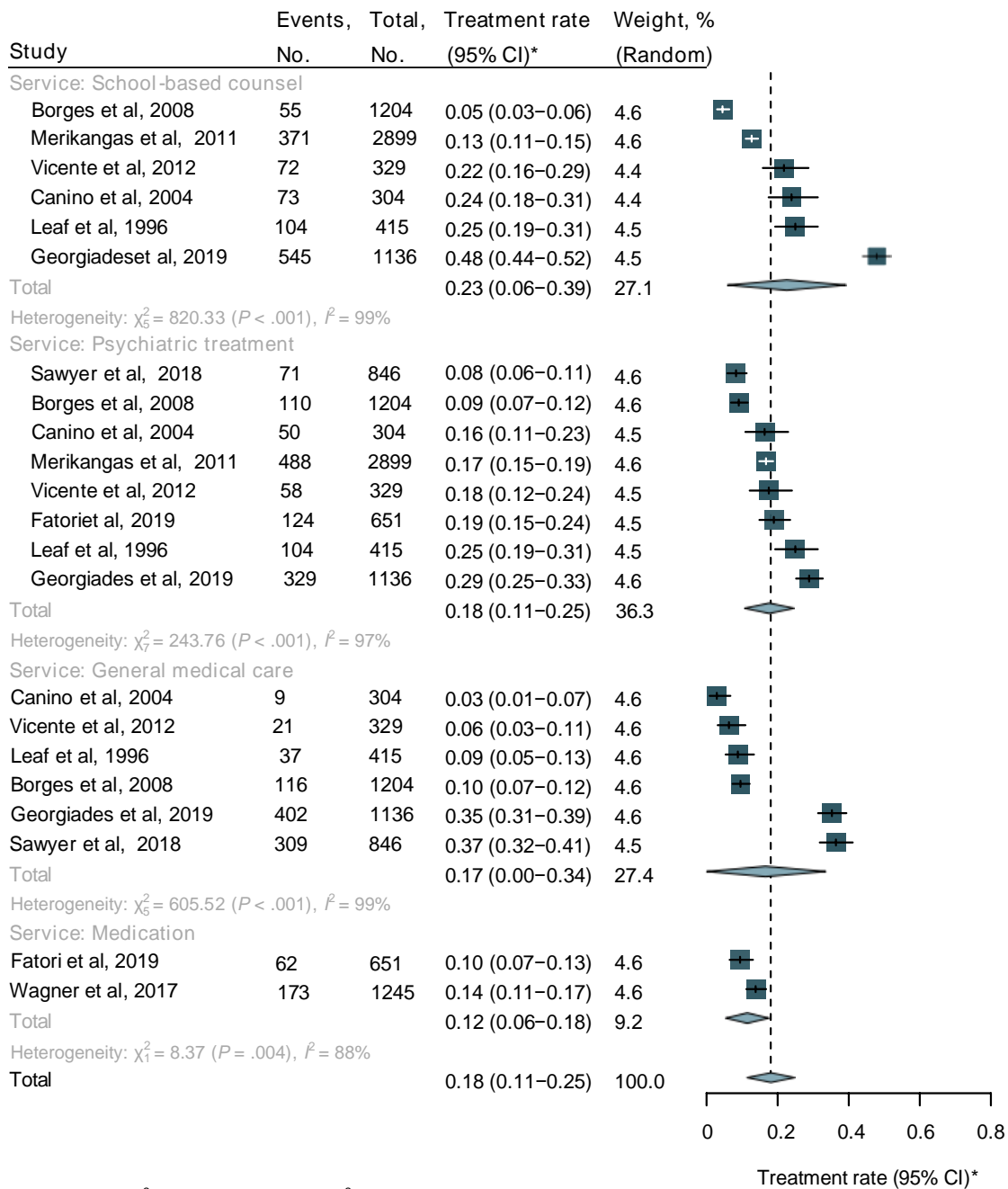
Heterogeneity: $\chi^2_7 = 449.90$ ($P < .001$), $I^2 = 98\%$
 Test for subgroup differences: $\chi^2_2 = 1.01$ ($P = .60$)
 *95% CI adjusted by Bonferroni correction

eFigure 30. Treatment rates for behavior disorders by informant sources



*95% CI adjusted by Bonferroni correction

eFigure 31. Subgroup by health service type

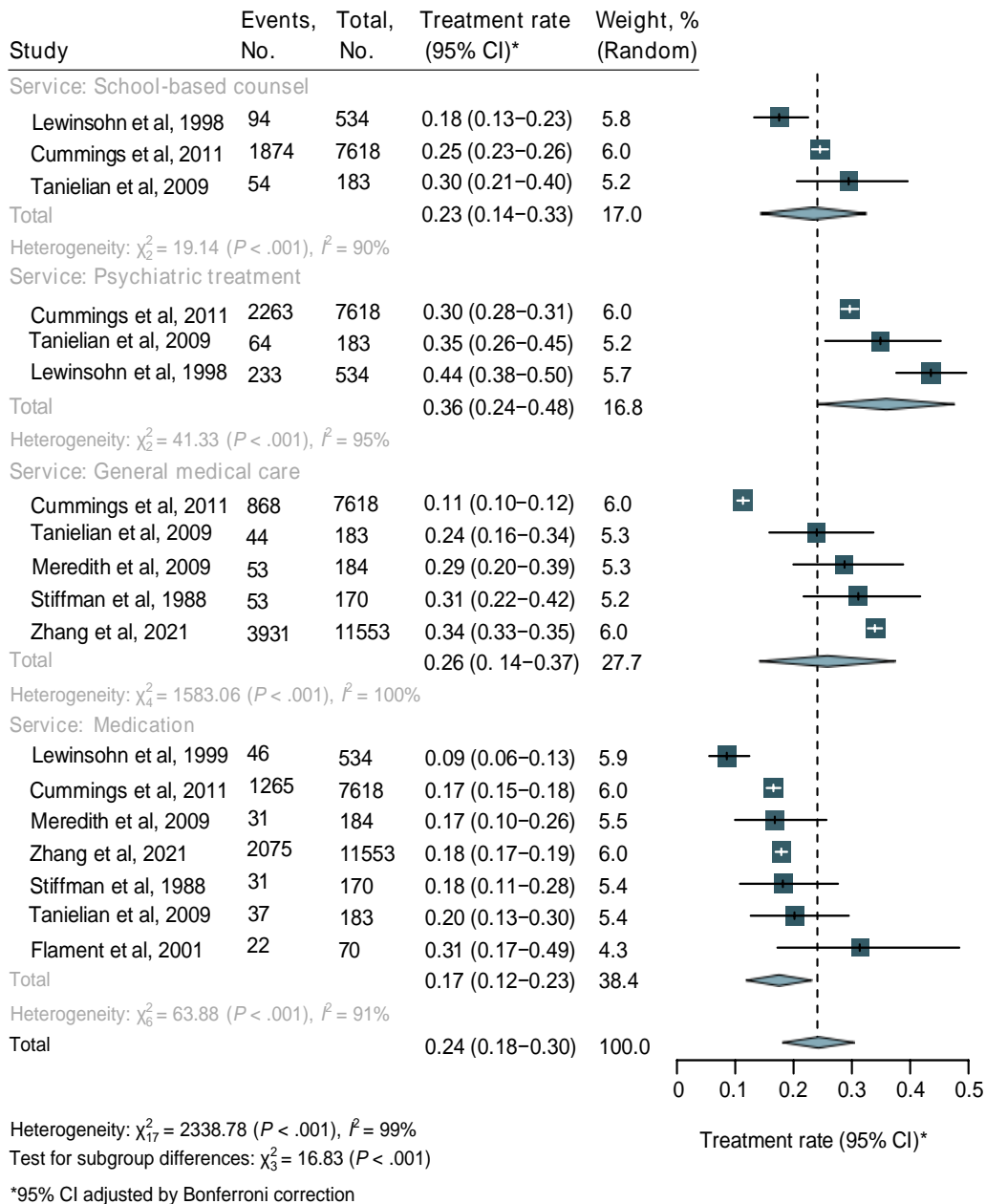


Heterogeneity: $\chi^2_{21} = 1704.05$ ($P < .001$), $I^2 = 99\%$

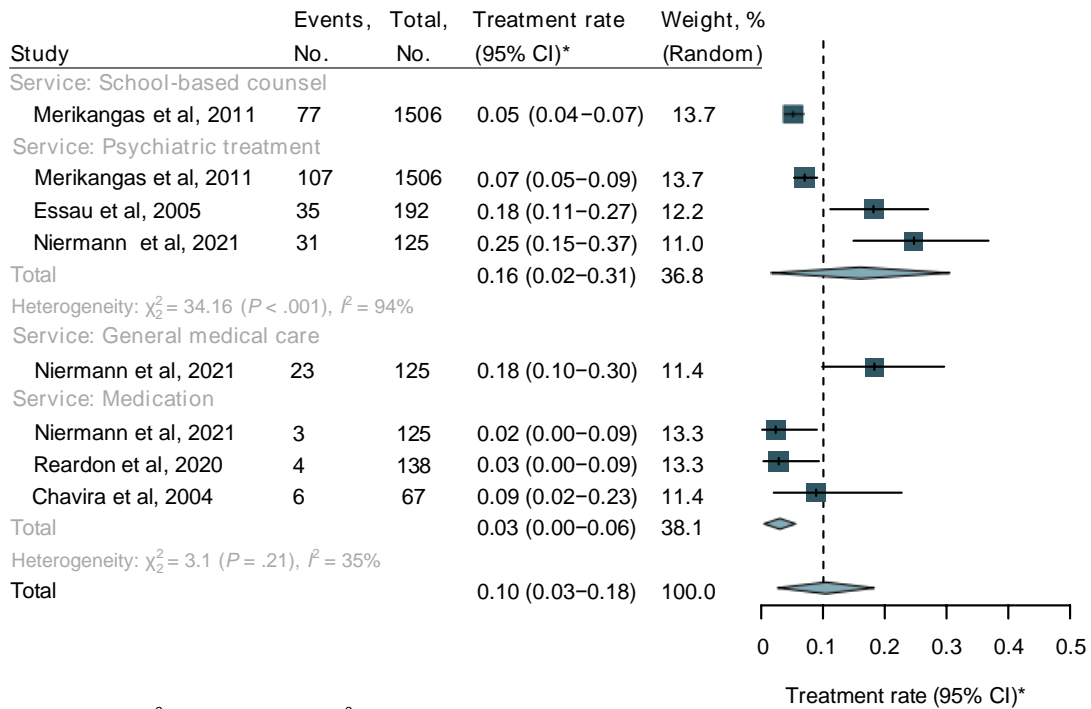
Test for subgroup differences: $\chi^2_3 = 4.96$ ($P = .17$)

*95% CI adjusted by Bonferroni correction

eFigure 32. Treatment rates for any mental disorder by health service types



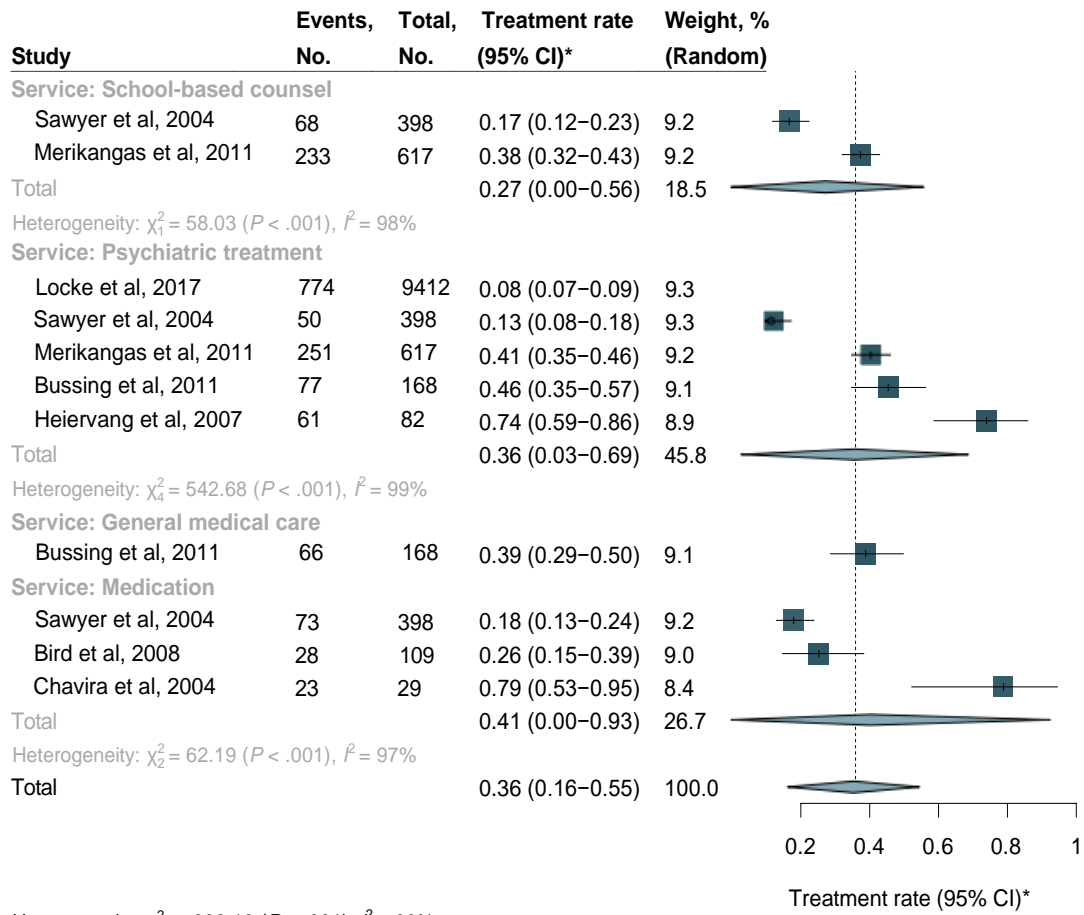
eFigure 33. Treatment rates for depressive disorders by health service types



Heterogeneity: $\chi^2_7 = 73.30$ ($P < .001$), $I^2 = 90\%$
 Test for subgroup differences: $\chi^2_3 = 23.47$ ($P < .001$)

*95% CI adjusted by Bonferroni correction

eFigure 34. Treatment rates for anxiety disorders by health service types

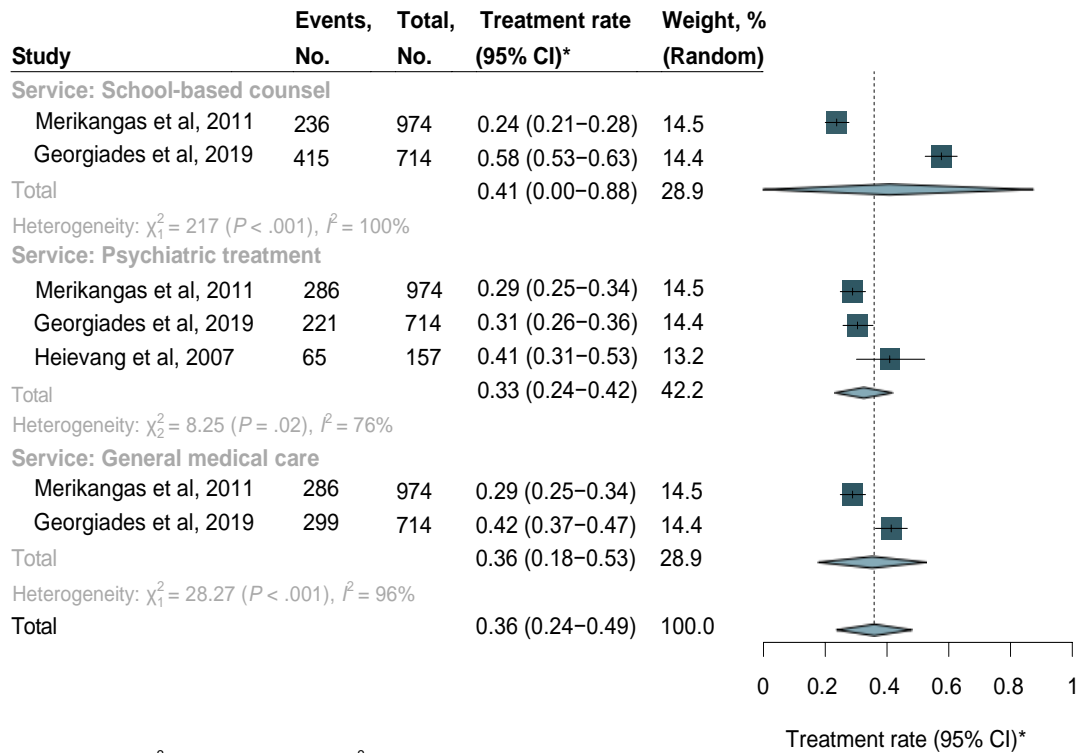


Heterogeneity: $\chi^2_{10} = 938.10$ ($P < .001$), $I^2 = 99\%$

Test for subgroup differences: $\chi^2_3 = 1.21$ ($P = .75$)

*95% CI adjusted by Bonferroni correction

eFigure 35. Treatment rates for ADHD by health service types

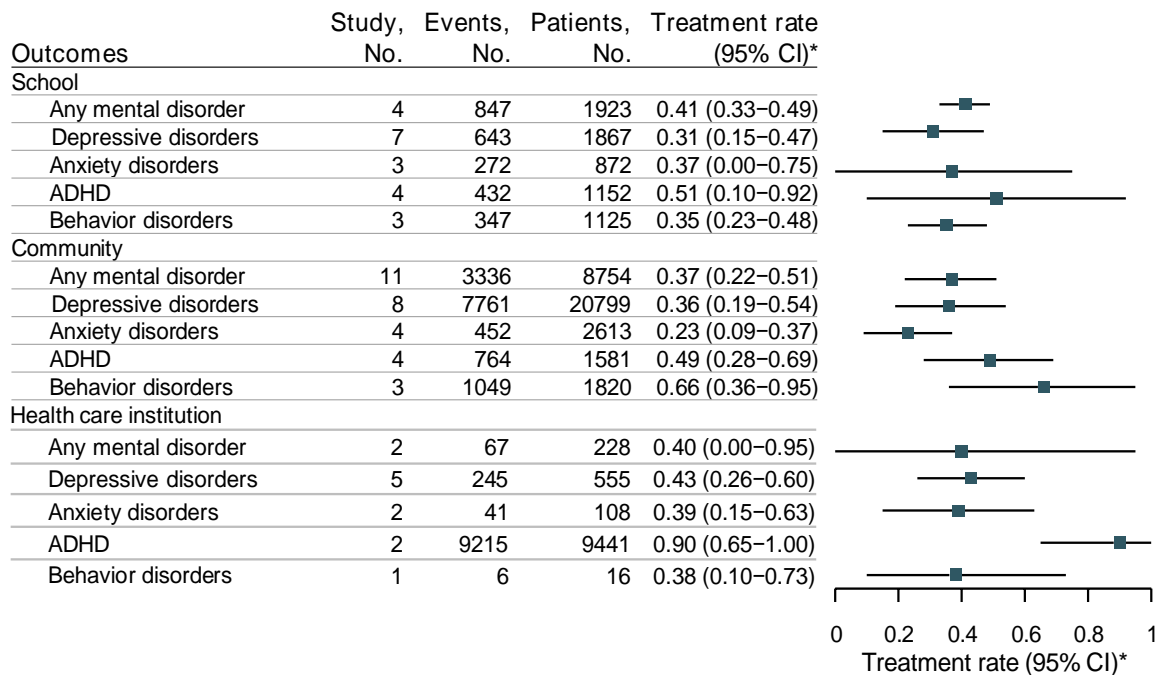


Heterogeneity: $\chi^2_6 = 266.19$ ($P < .001$), $I^2 = 98\%$

Test for subgroup differences: $\chi^2_2 = 0.32$ ($P = .85$)

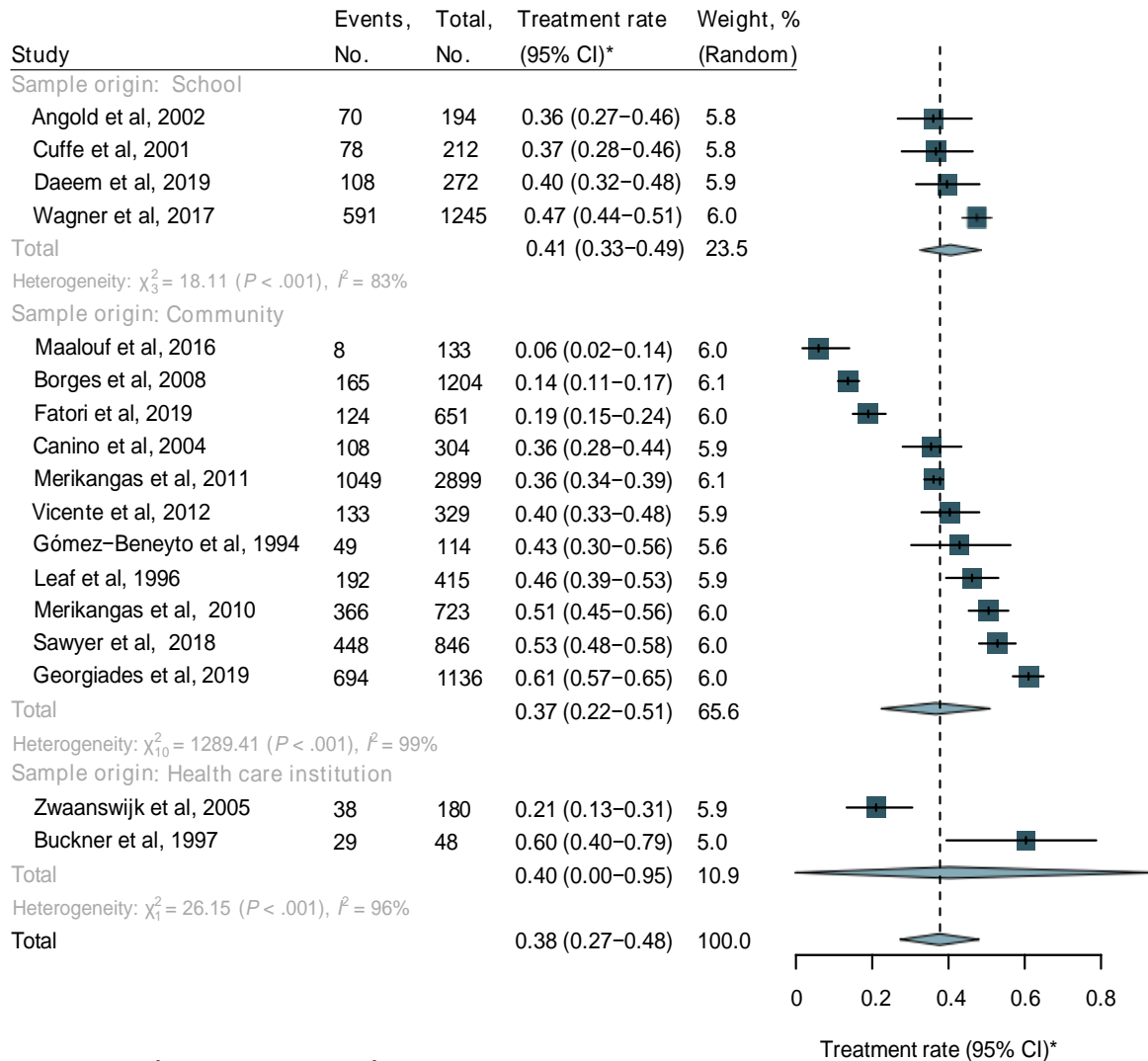
*95% CI adjusted by Bonferroni correction

eFigure 36. Treatment rates for behavior disorders by health service types



*95% CI adjusted by Bonferroni correction

eFigure 37. Subgroup by sample origin population

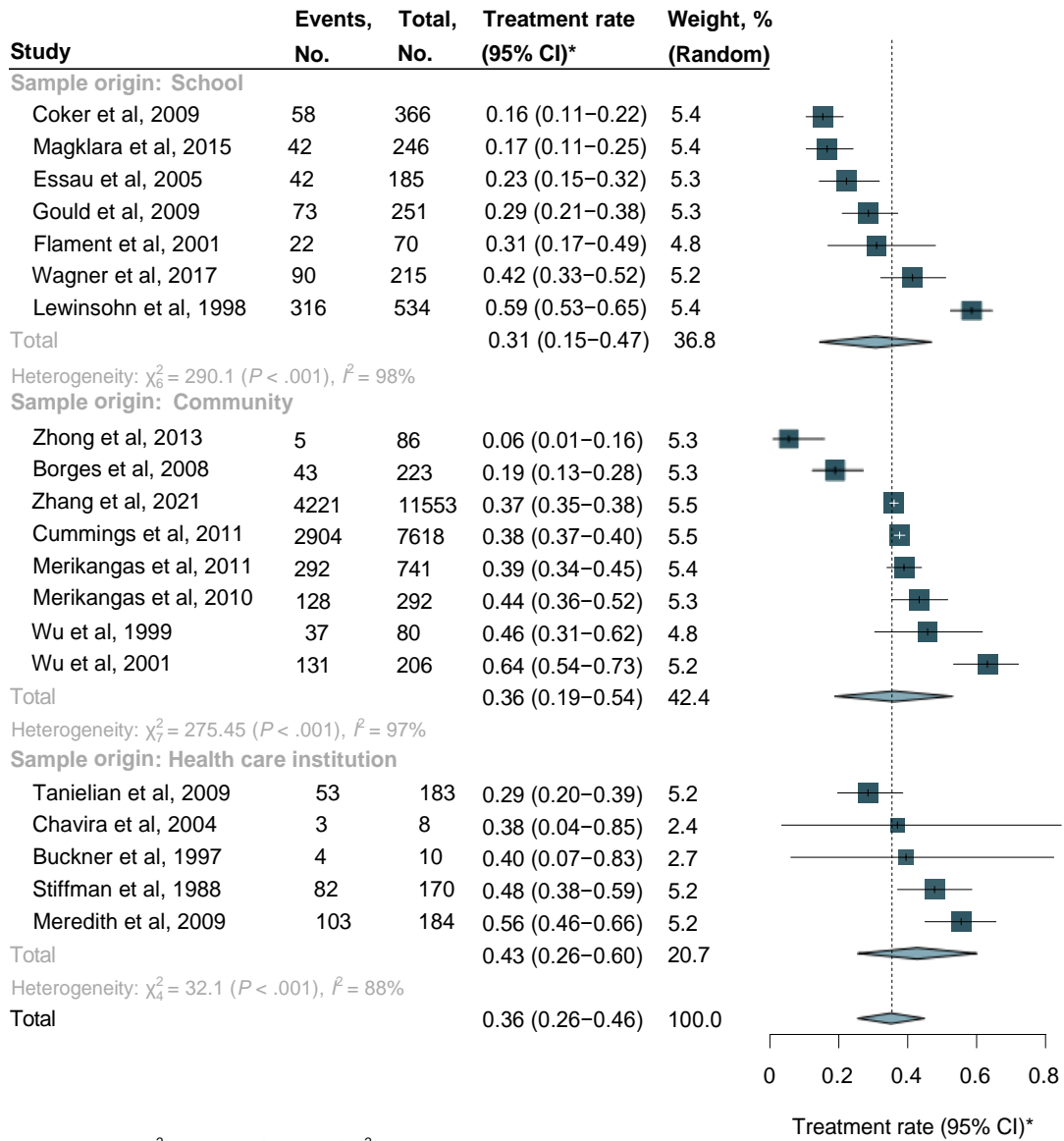


Heterogeneity: $\chi^2_{16} = 1416.09$ ($P < .001$), $I^2 = 99\%$

Test for subgroup differences: $\chi^2_2 = 0.41$ ($P = .81$)

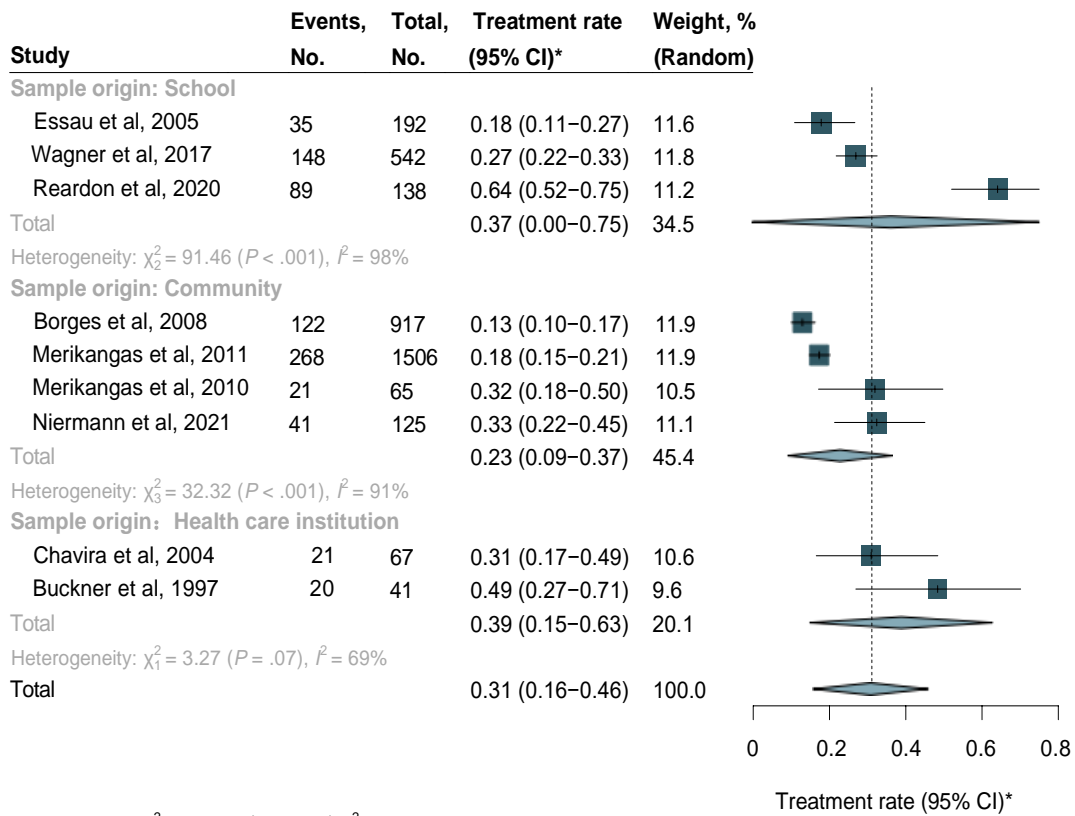
*95% CI adjusted by Bonferroni correction

eFigure 38. Treatment rates for any mental disorder by the sample origin population



Heterogeneity: $\chi^2_{19} = 645.13$ ($P < .001$), $I^2 = 97\%$
 Test for subgroup differences: $\chi^2_2 = 2.06$ ($P = .36$)
 *95% CI adjusted by Bonferroni correction

eFigure 39. Treatment rates for depressive disorders by the sample origin population

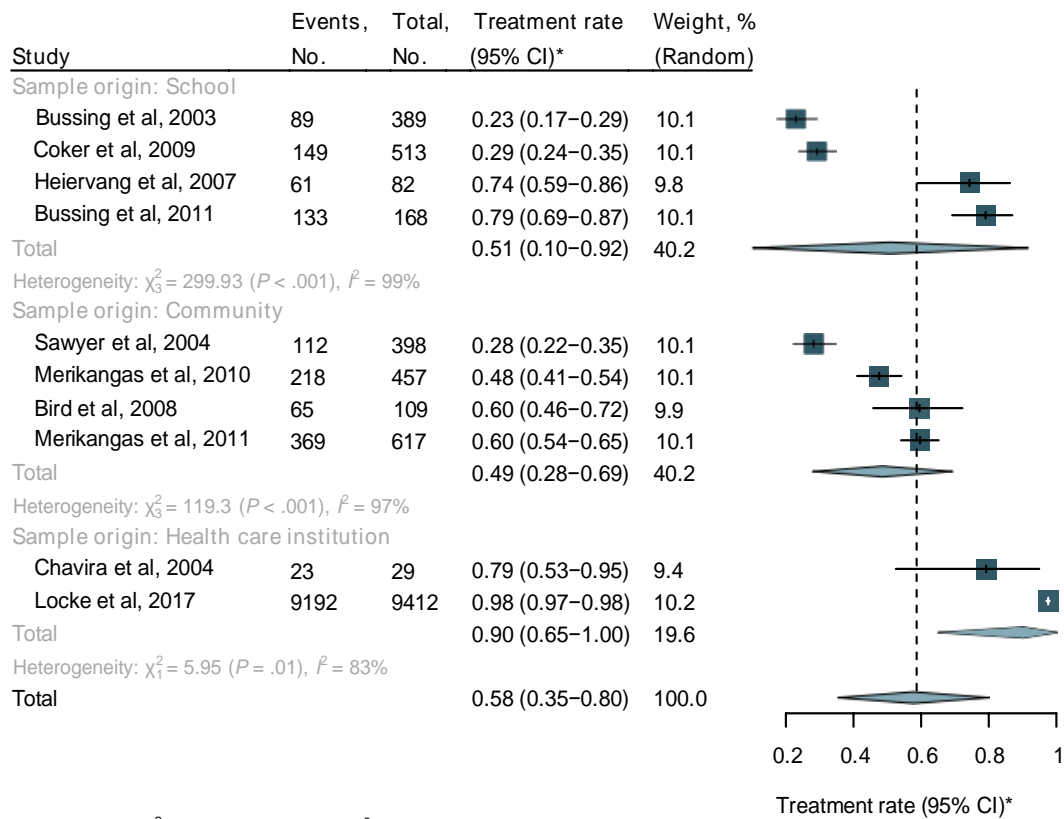


Heterogeneity: $\chi^2 = 205.69$ ($P < .001$), $I^2 = 96\%$

Test for subgroup differences: $\chi^2 = 3.03$ ($P = .22$)

*95% CI adjusted by Bonferroni correction

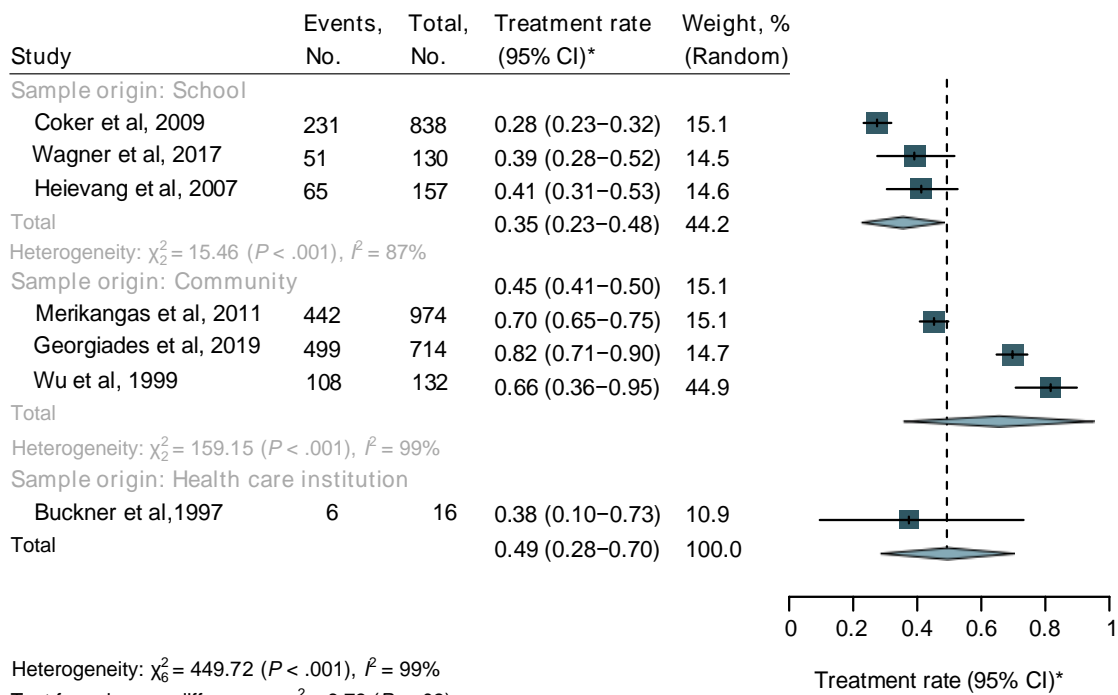
eFigure 40. Treatment rates for anxiety disorders by the sample origin population



Heterogeneity: $\chi^2_9 = 4192.28$ ($P < .001$), $I^2 = 100\%$
 Test for subgroup differences: $\chi^2_2 = 13.22$ ($P = .001$)

*95% CI adjusted by Bonferroni correction

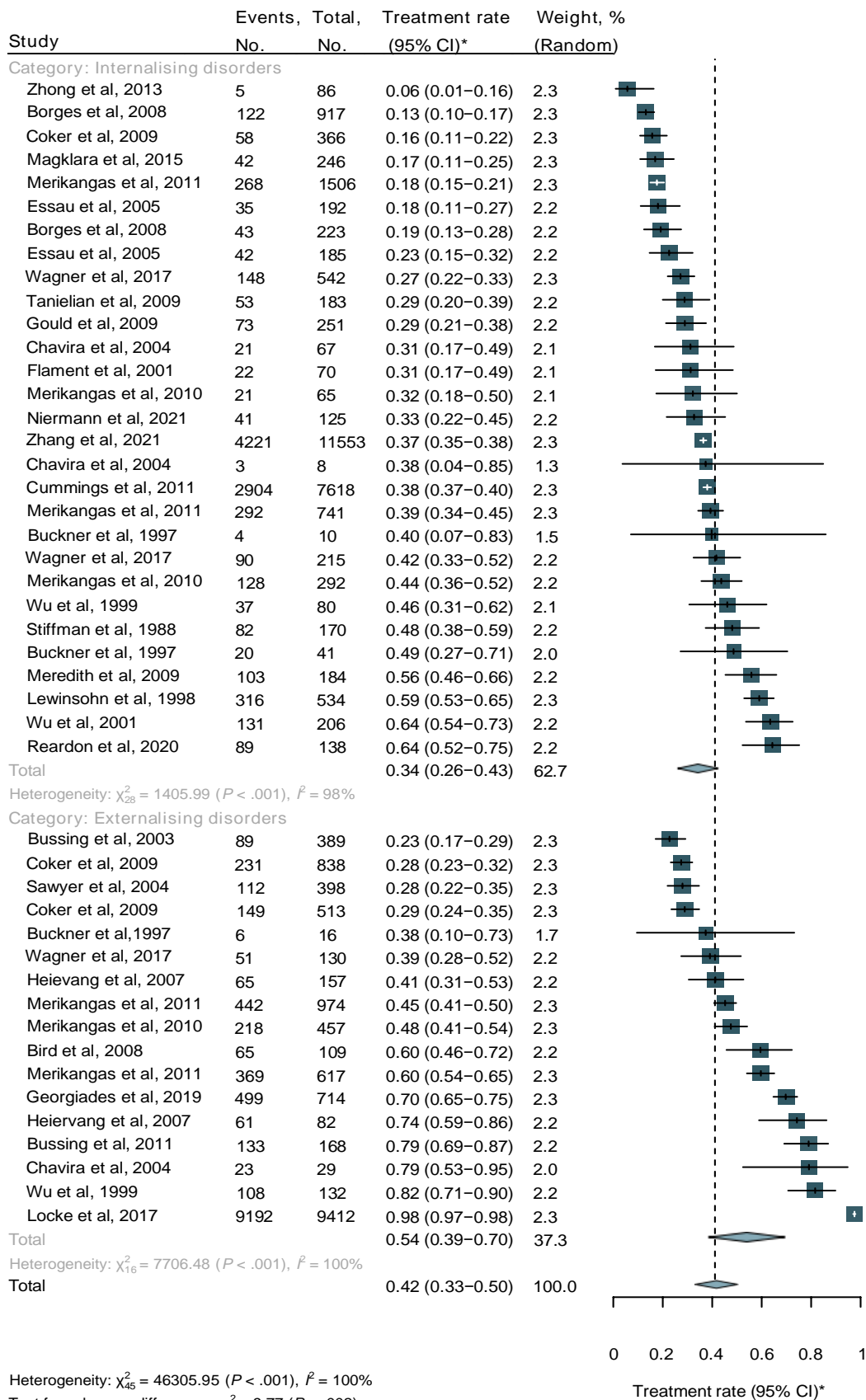
eFigure 41. Treatment rates for ADHD by the sample origin population



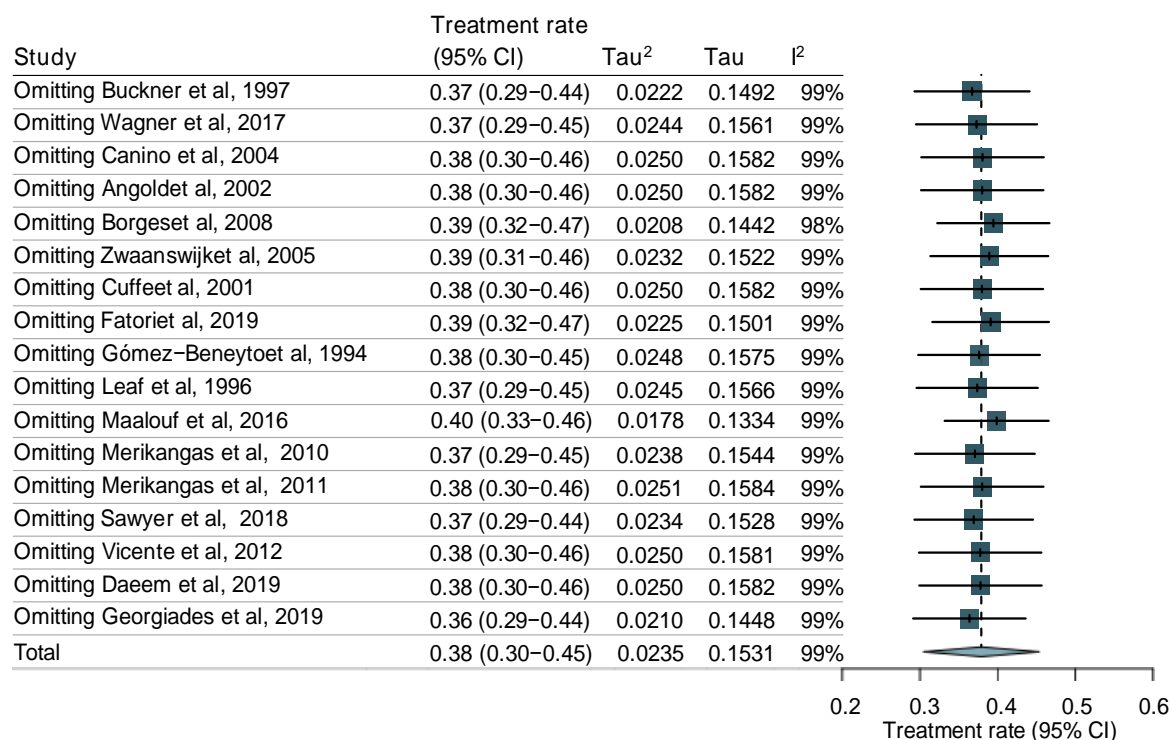
Heterogeneity: $\chi^2_6 = 449.72$ ($P < .001$), $I^2 = 99\%$
 Test for subgroup differences: $\chi^2_2 = 6.73$ ($P = .03$)

*95% CI adjusted by Bonferroni correction

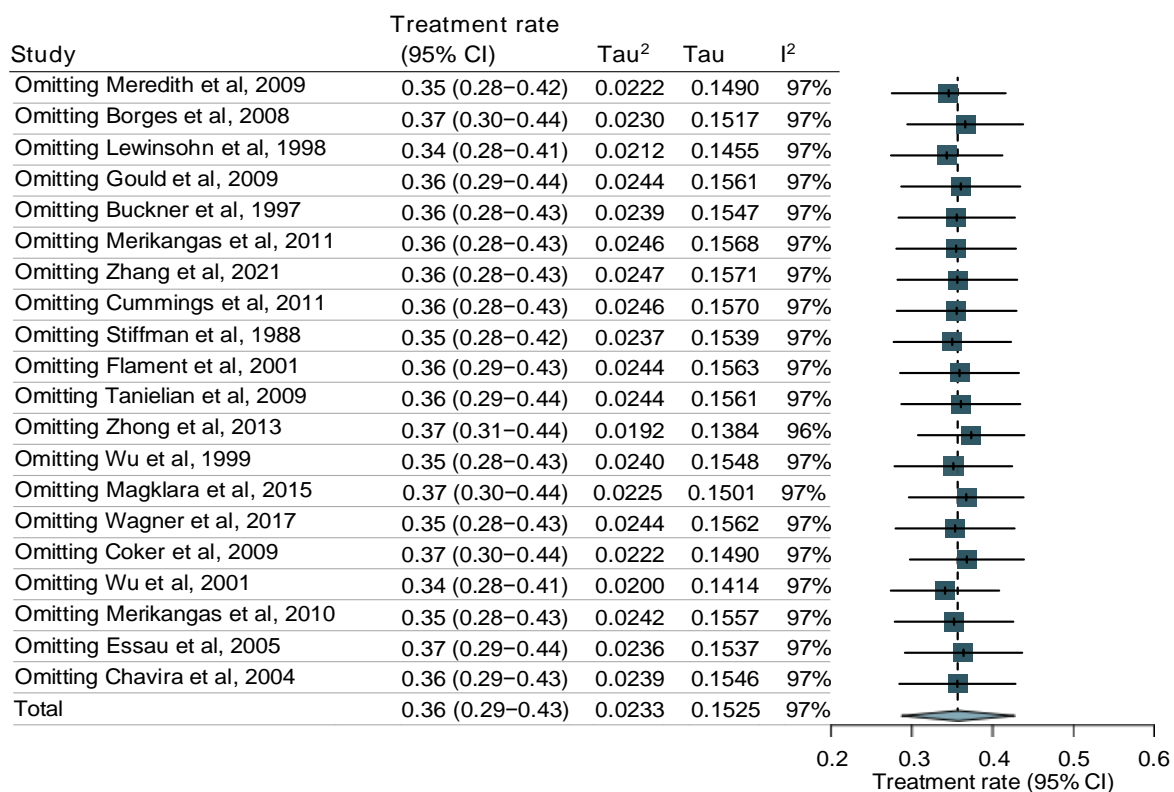
eFigure 42. Treatment rates for behavior disorders by the sample origin population



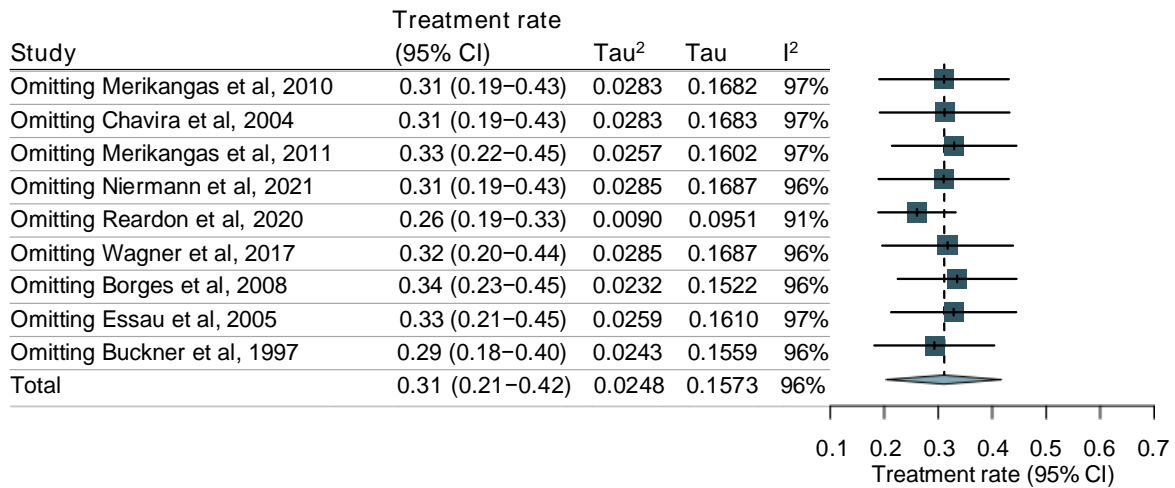
eFigure 43. Treatment rates for internalizing and externalizing disorders



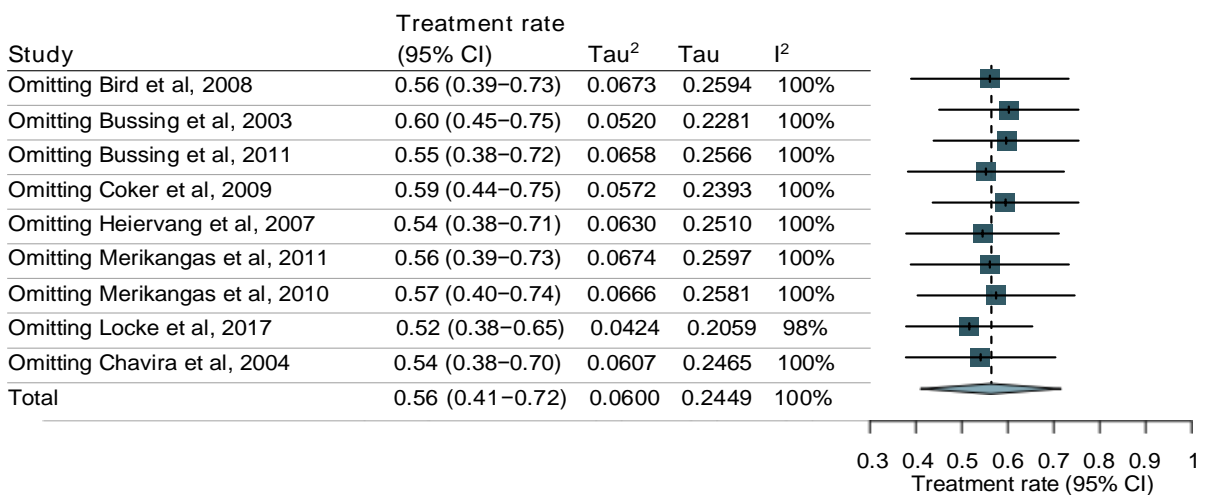
eFigure 44. Sensitivity analysis forest plots for any mental disorder



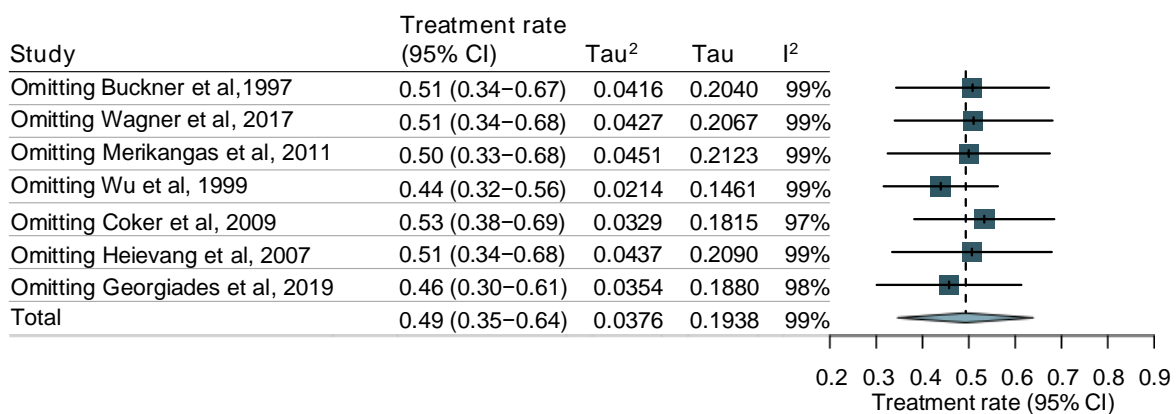
eFigure 45. Sensitivity analysis forest plots for depressive disorders



eFigure 46. Sensitivity analysis forest plots for anxiety disorders

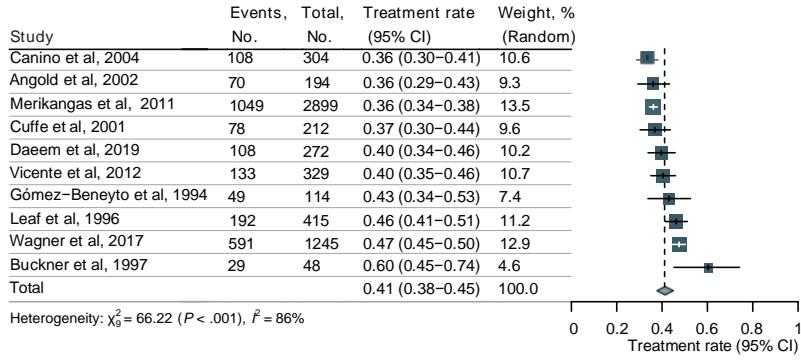


eFigure 47. Sensitivity analysis forest plots for ADHD

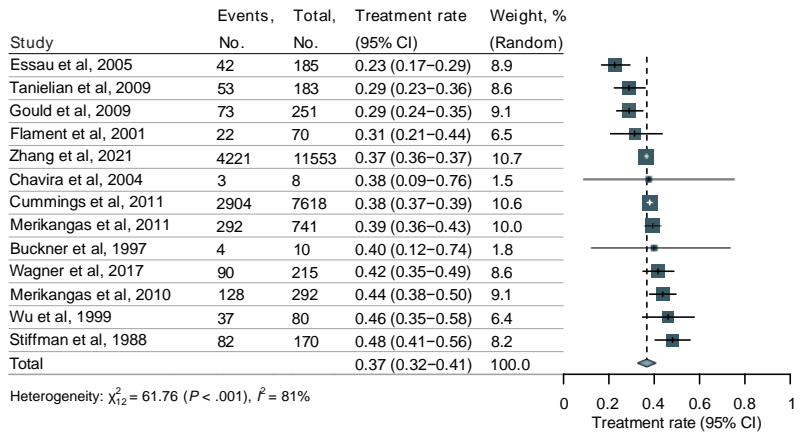


eFigure 48. Sensitivity analysis forest plots for behavior disorders

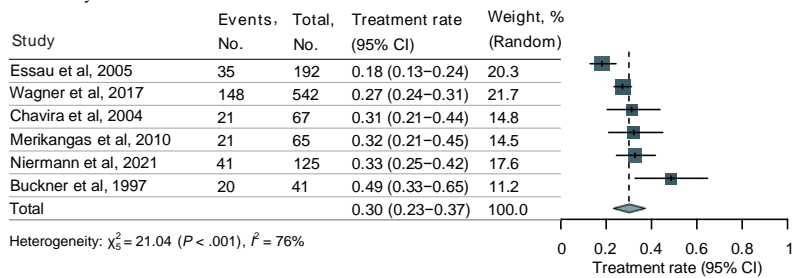
A. Any mental disorder



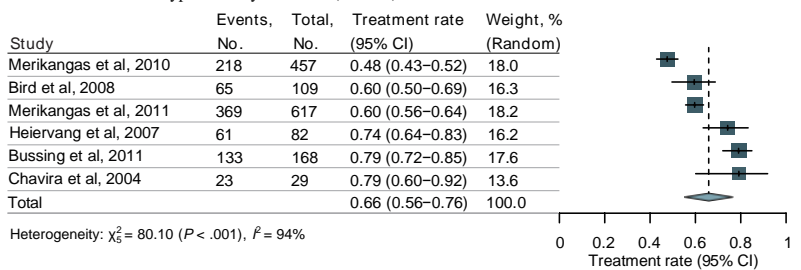
B. Depressive disorders



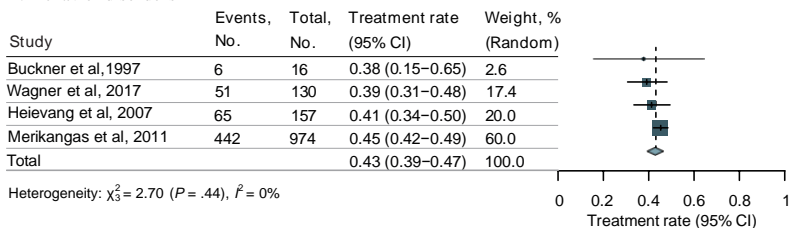
C. Anxiety disorders



D. Attention deficit hyperactivity disorder (ADHD)

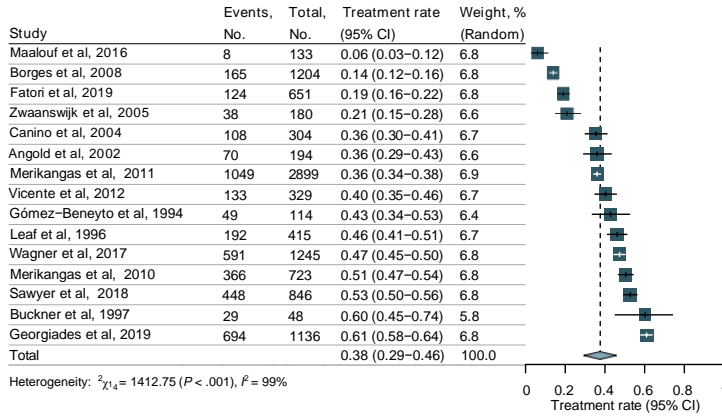


E. Behavior disorders

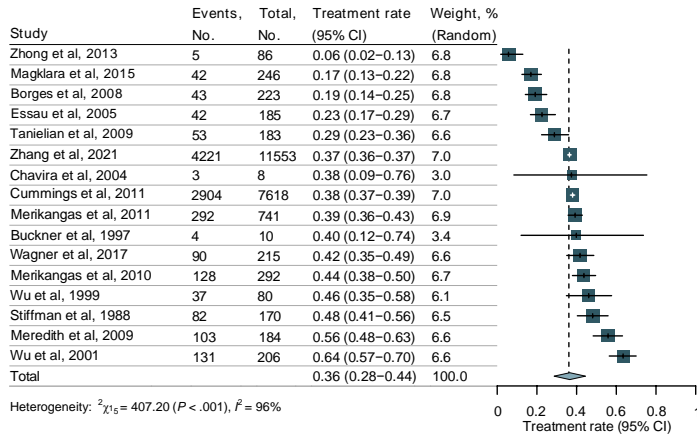


eFigure 49. Sensitivity analysis by excluding studies in which the 95% CI was outside the aggregated 95% CI of all studies

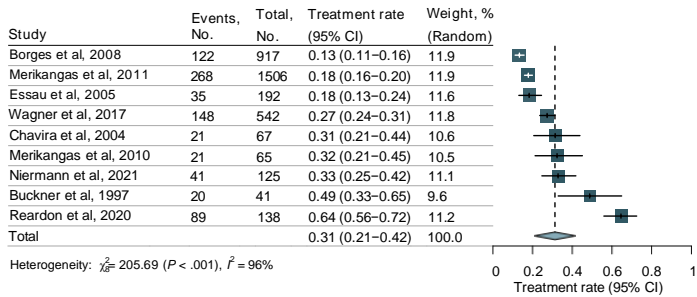
A. Any mental disorder



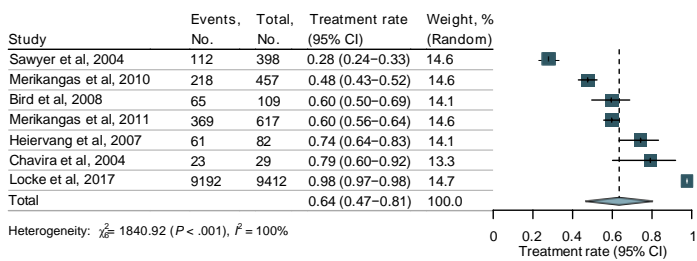
B. Depressive disorders



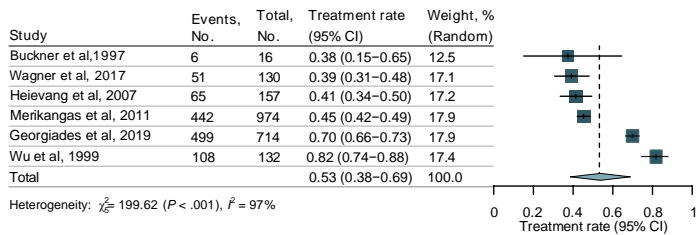
C. Anxiety disorders



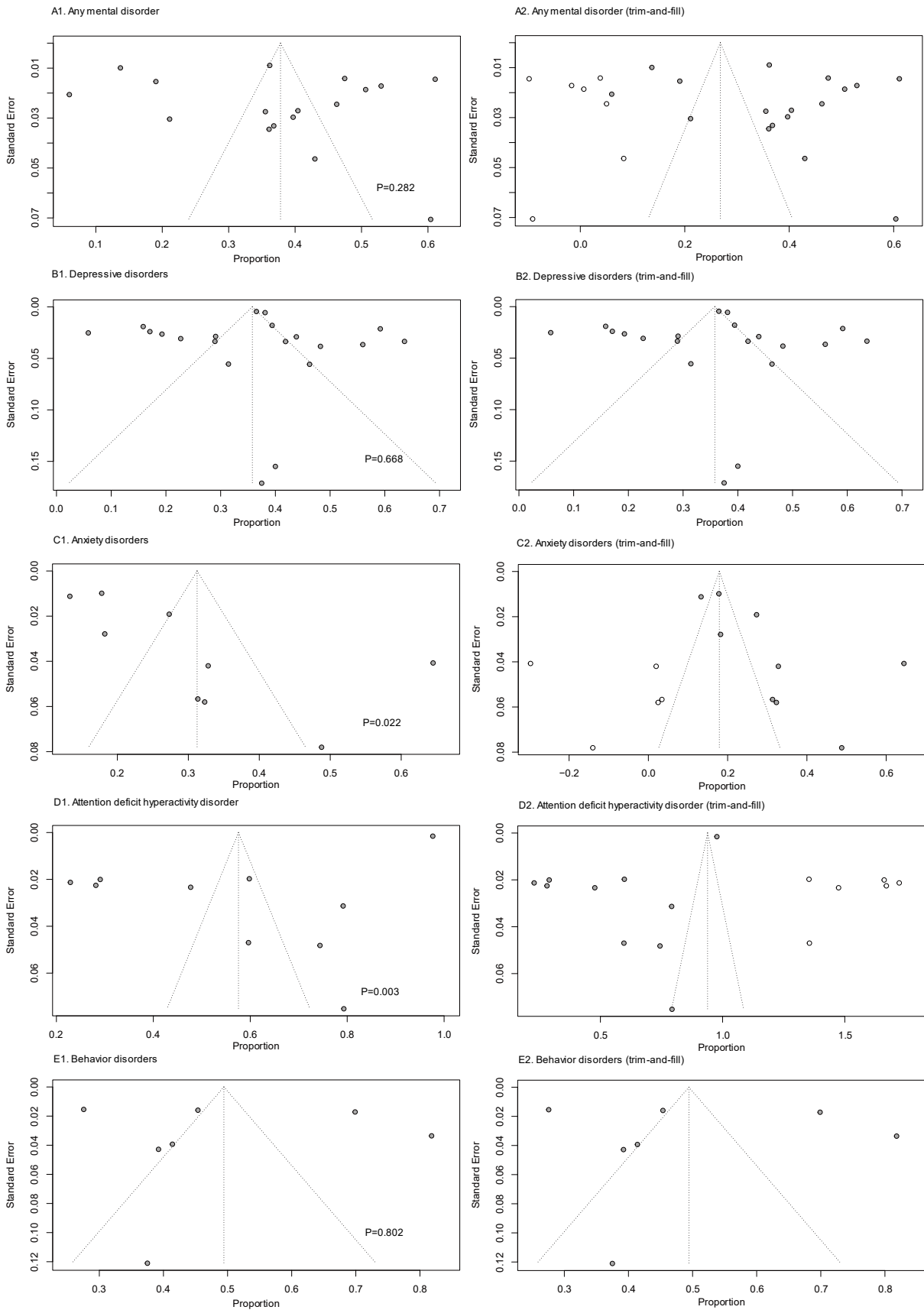
D. Attention deficit hyperactivity disorder(ADHD)



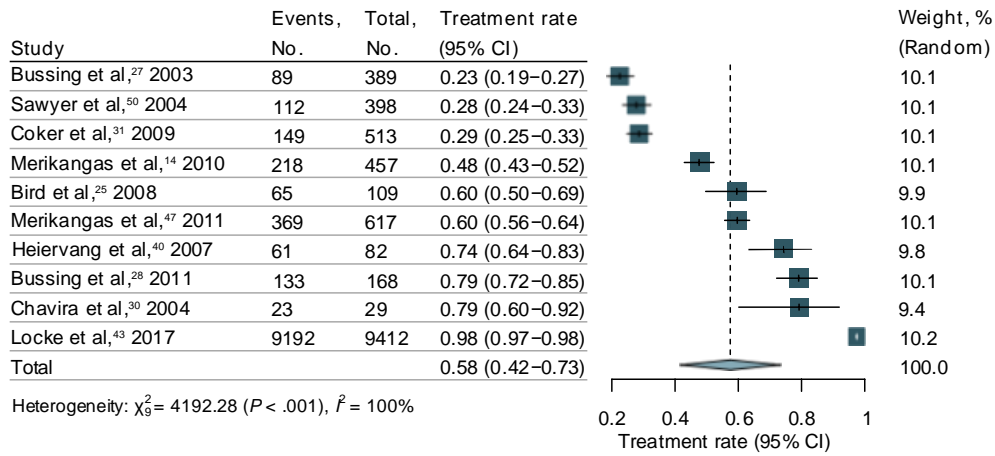
E. Behavior disorders



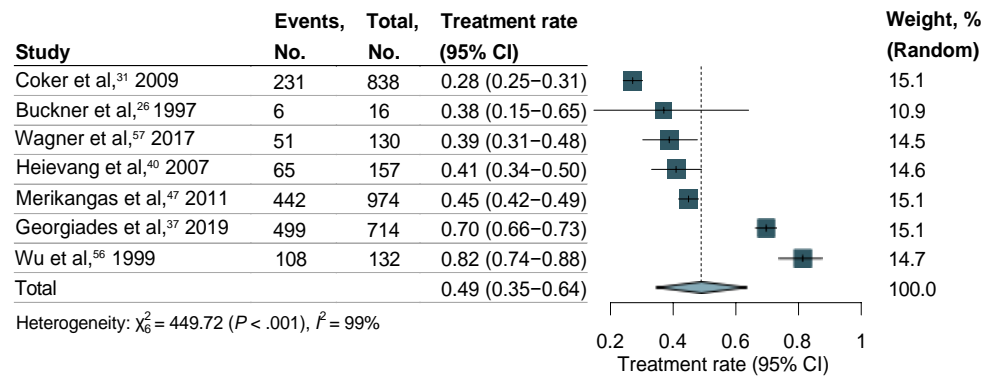
eFigure 50. Sensitivity analysis by excluding studies not reported age ranges



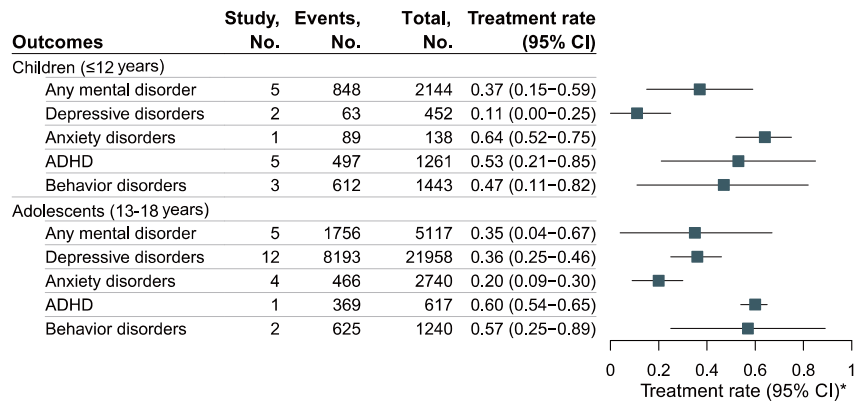
eFigure 51. Funnel plot (left) and trim-and-fill funnel plot (right)



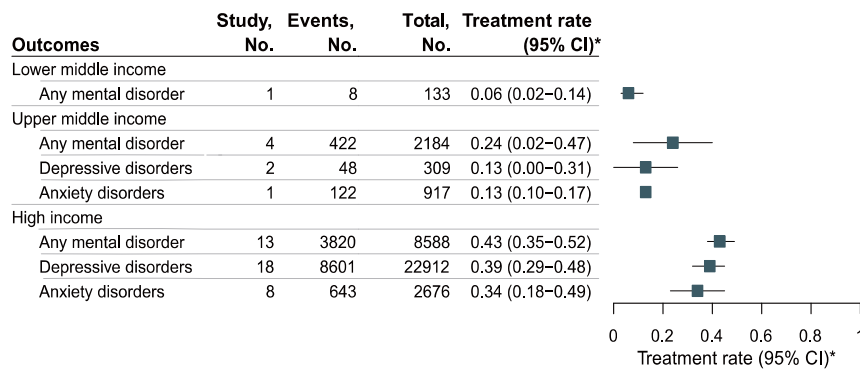
eFigure 52. Treatment Rates for ADHD



eFigure 53. Treatment Rates for Behavior Disorders



eFigure 54. Subgroup Analysis by Age Group



eFigure 55. Subgroup Analysis by Income Level

eMethods 1. Retrieval Strategy

According to the topic of this study, the keywords to be searched were “mental disorders”, “depressive disorders”, “anxiety disorders”, “attention deficit hyperactivity disorder”, “behavior disorders”, “treatment rate”, “children”, “adolescent”, and “seeking help”. In order to find as many articles as we need, we looked for terms with the same meaning but different expressions as these keywords in other similar systematic reviews or Medical Subject Headings. The search terms were consistently used in different databases. Literature search was limited to English journals. (Take Pubmed for example, search entry available online: see eAppendix). Each retrieval step was performed by two researchers (SW and QL) independently. If there is a disagreement between the two researchers, a third party (Senior researcher, YX) will participate in discussion and resolve the inconsistencies.

eMethods 2. Exposure

Any mental disorder mainly included anxiety disorders (panic disorder, generalized anxiety disorders, agoraphobia without panic disorder, specific phobia, social phobia, posttraumatic stress disorder, obsessive-compulsive disorder, separation anxiety disorders), mood disorders (major depressive disorders, dysthymic disorder, bipolar disorder I or II), impulse control disorders (oppositional defiant disorder, conduct disorder, attention deficit hyperactivity disorder, intermittent explosive disorder), and substance use disorders (alcohol and drug abuse and dependence). This fact should arouse our attention, the partial literature collected in this study did not include all of the conditions mentioned above.

The diagnostic tools used include the Child and Adolescent Psychiatric Assessment (CAPA),¹ the Diagnostic Interview Schedule for Children (DISC-IV/ DISC 2.3),²⁻³ the anxiety disorders Interview Schedule for Children-Parent Version (ADIS-C/P),⁴ the World Mental Health Composite International Diagnostic Interview (CIDI; ICD-9/10),⁵ the Present Episode Version of the Schedule for Affective Disorders and Schizophrenia for School-Aged Children (K-SADS),⁶ the Development and Well-Being Assessment (DAWBA),⁷ the Mini International Neuropsychiatric Interview for Children and Adolescents (MINI-KID),⁸ and the Diagnostic Interview for Children and Adolescents (DICA).⁹

eResults. Study Selection

A total of 39251 articles were initially included. When duplicates were removed, 26350 studies were left. Two authors conducted preliminary screening according to the title and abstract of the article respectively. 338 articles were screened for full-text reading, 68 literatures were obtained. By searching the references of the 68 literatures, a total of 9 records meeting the criteria were found. If multiple studies used overlapping samples but provided unique treatment rates for diseases, all studies were retained for analysis. If multiple studies with overlapping samples assess treatment rates for the same disease, determining which study to include in the meta-analysis is based on the largest sample size and the most detailed description. After excluding 34 studies with duplicate samples and three studies with a quality score of less than 5, 40 studies were eventually included analysis.

eAppendix. Explicit Search Entry

Search term for the systematic literature in Pubmed:

#1 (((((((((((((((((((("Help-Seeking Behavior"[Title/Abstract]) OR ("Healthcare Disparities"[Title/Abstract])) OR ("Health Services Accessibility"[Title/Abstract])) OR ("Mental Health Services"[Title/Abstract])) OR ("Community Mental Health Services"[Title/Abstract])) OR ("treatment

gap"[Title/Abstract])) OR ("treatment gaps"[Title/Abstract])) OR ("treatment rates") OR ("treatment rate*") OR ("under treatment"[Title/Abstract])) OR ("treatment need"[Title/Abstract])) OR ("treatment seeking"[Title/Abstract])) OR ("seeking treatment"[Title/Abstract])) OR ("health care seeking"[Title/Abstract])) OR ("seeking care"[Title/Abstract])) OR ("access to care"[Title/Abstract])) OR ("professional help"[Title/Abstract])) OR ("barriers to treatment"[Title/Abstract])) OR ("treatment barrier*"[Title/Abstract])) OR ("Patient Compliance"[Title/Abstract])) OR ("Patient Acceptance of Health Care"[Title/Abstract])) OR ("Medication Adherence"[Title/Abstract])) OR ("Treatment Adherence and Compliance"[Title/Abstract])) OR ("Treatment Adherence"[Title/Abstract])) OR ("Treatment Compliance"[Title/Abstract]))

AND

#2 (((((((((((((((("Mental Disorder*"[Title/Abstract]) OR ("Psychiatric Disorder*"[Title/Abstract])) OR (Depression[Title/Abstract])) OR ("depressive disorders*"[Title/Abstract])) OR ("depressive disorders, Major"[Title/Abstract])) OR ("major depressive episode"[Title/Abstract])) OR (anxiety[Title/Abstract])) OR ("anxiety disorders"[Title/Abstract])) OR (Hypervigilance[Title/Abstract])) OR ("Generalized anxiety disorders"[Title/Abstract])) OR ("Behavior Disorder*"[Title/Abstract])) OR ("Emotional Disorder*"[Title/Abstract])) OR ("conduct disorders"[Title/Abstract])) OR (ODD[Title/Abstract])) OR ("attention deficit hyperactivity disorder*"[Title/Abstract])) OR ("ADHD" [Title/Abstract])) OR ("Disruptive behavior disorder*"[Title/Abstract])) OR ("Mental problem"[Title/Abstract]))

AND

#3 (((((((((((adolescent*[Title/Abstract]) OR (teenager*[Title/Abstract])) OR (child*[Title/Abstract])) OR (children[Title/Abstract])) OR (student*[Title/Abstract])) OR (juvenile*[Title/Abstract])) OR (school*[Title/Abstract])) OR (teen*[Title/Abstract])) OR (young[Title/Abstract])) OR (youth*[Title/Abstract])) OR (minors[Title/Abstract]))

References

1. Angold A, Costello EJ. The Child and Adolescent Psychiatric Assessment (CAPA). *J Am Acad Child Adolesc Psychiatry*. 2000;39(1):39-48. doi: 10.1097/00004583-200001000-00015
2. Schwab-Stone ME, Shaffer D, Dulcan MK, et al. Criterion validity of the NIMH Diagnostic Interview Schedule for Children Version 2.3 (DISC-2.3). *J Am Acad Child Adolesc Psychiatry*. 1996;35(7):878-88. doi: 10.1097/00004583-199607000-00013
3. Shaffer D, Fisher P, Lucas CP, Dulcan MK, Schwab-Stone ME. NIMH Diagnostic Interview Schedule for Children Version IV (NIMH DISC-IV): description, differences from previous versions, and reliability of some common diagnoses. *J Am Acad Child Adolesc Psychiatry*. 2000;39(1):28-38. doi: 10.1097/00004583-200001000-00014
4. Wood JJ, Piacentini JC, Bergman RL, McCracken J, Barrios V. Concurrent validity of the anxiety disorders section of the Anxiety Disorders Interview Schedule for DSM-IV: child and parent versions. *J Clin Child Adolesc Psychol*. 2002;31(3):335-42. doi: 10.1207/S15374424JCCP3103_05
5. Kessler RC, Üstün TB. The World Mental Health (WMH) Survey Initiative Version of the World Health Organization (WHO) Composite International Diagnostic Interview (CIDI). *Int J Methods Psychiatr Res*. 2004;13(2):93-121. doi: 10.1002/mpr.168
6. Chambers WJ, Puig-Antich J, Hirsch M, et al. The assessment of affective disorders in children and adolescents by semistructured interview. Test-retest reliability of the schedule for affective disorders and

schizophrenia for school-age children, present episode version. *Arch Gen Psychiatry*. 1985;42(7):696-702. doi: 10.1001/archpsyc.1985.01790300064008

7. Goodman R, Ford T, Richards H, Gatward R, Meltzer H. The Development and Well-Being Assessment: description and initial validation of an integrated assessment of child and adolescent psychopathology. *J Child Psychol Psychiatry*. 2000;41(5):645-55.

8. Sheehan DV, Sheehan KH, Shytle RD, et al. Reliability and validity of the Mini International Neuropsychiatric Interview for Children and Adolescents (MINI-KID). *J Clin Psychiatry*. 2010;71(3):313-26. doi: 10.4088/JCP.09m05305whi

9. Reich W, Herjanic B, Welner Z, Gandhi PR. Development of a structured psychiatric interview for children: agreement on diagnosis comparing child and parent interviews. *J Abnorm Child Psychol*. 1982;10(3):325-36. doi: 10.1007/BF00912325