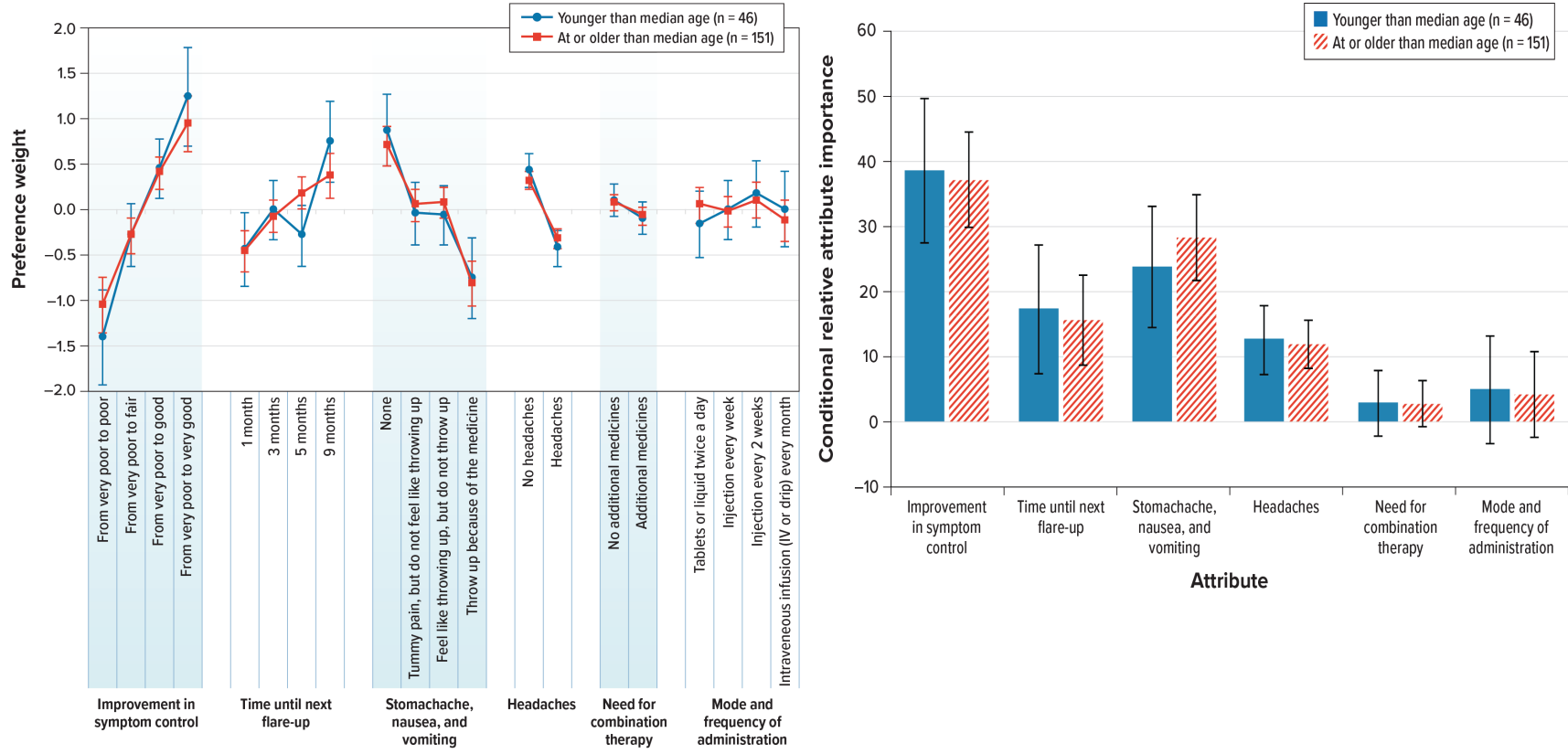


SUPPLEMENTAL APPENDIX

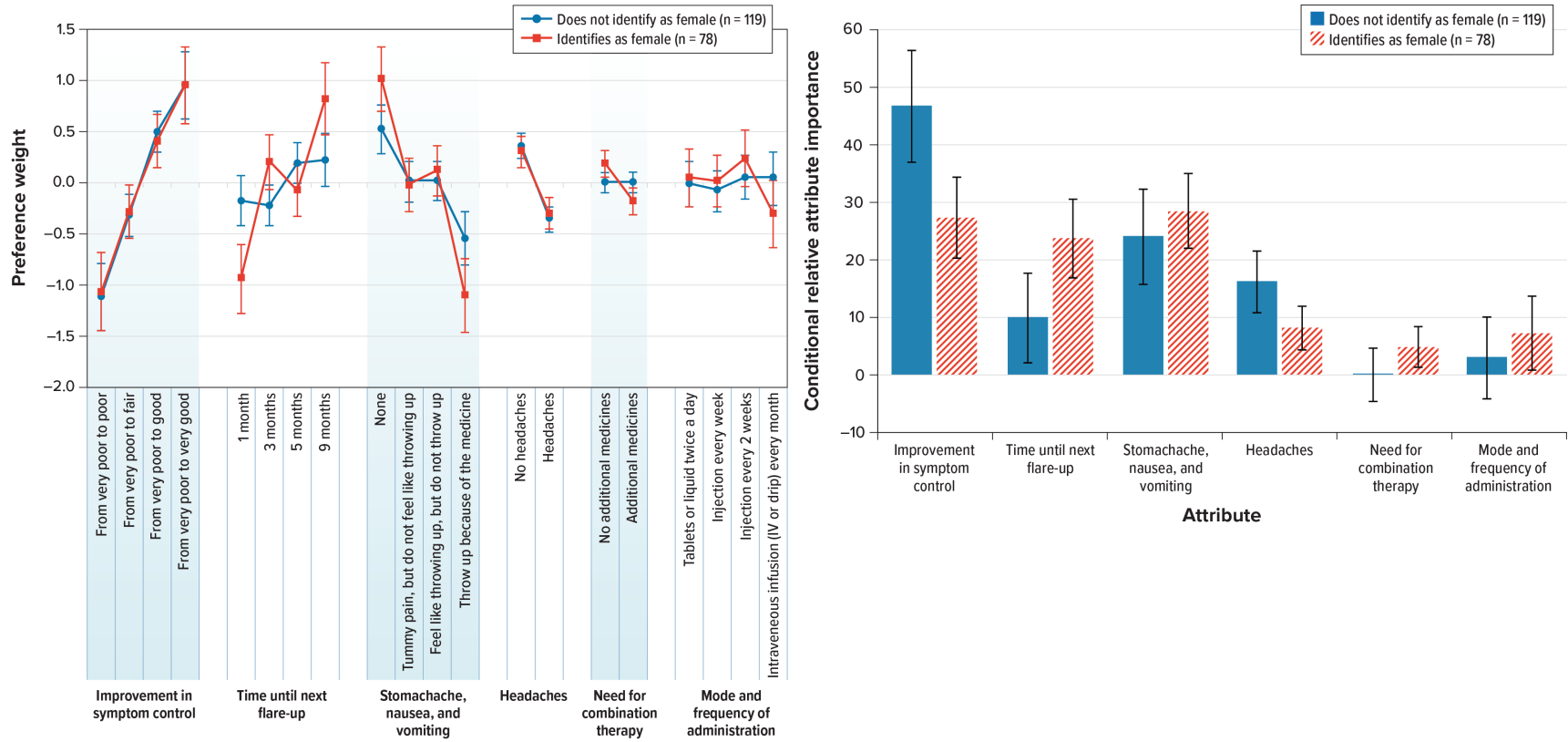
Appendix A: Subgroup Analyses, US Sample

Figure S1. Preference Weights and Conditional Relative Importance Estimates: Adolescents Younger Than Median Age Versus Adolescents at or Older Than Median Age



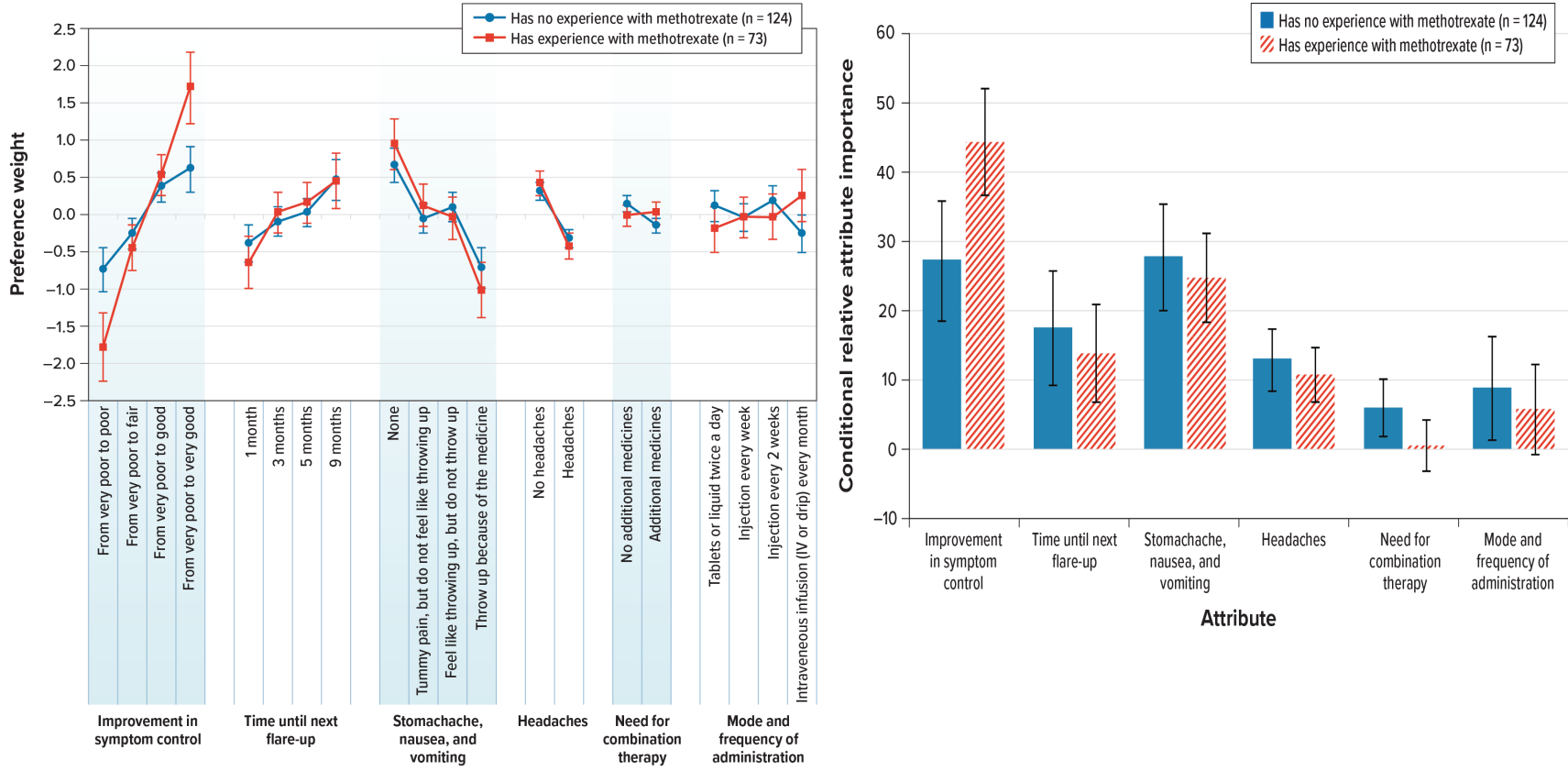
IV = intravenous.

Figure S2. Preference Weights and Conditional Relative Importance Estimates: Adolescents Who Identify as Female Versus Adolescents Who Do Not Identify as Female



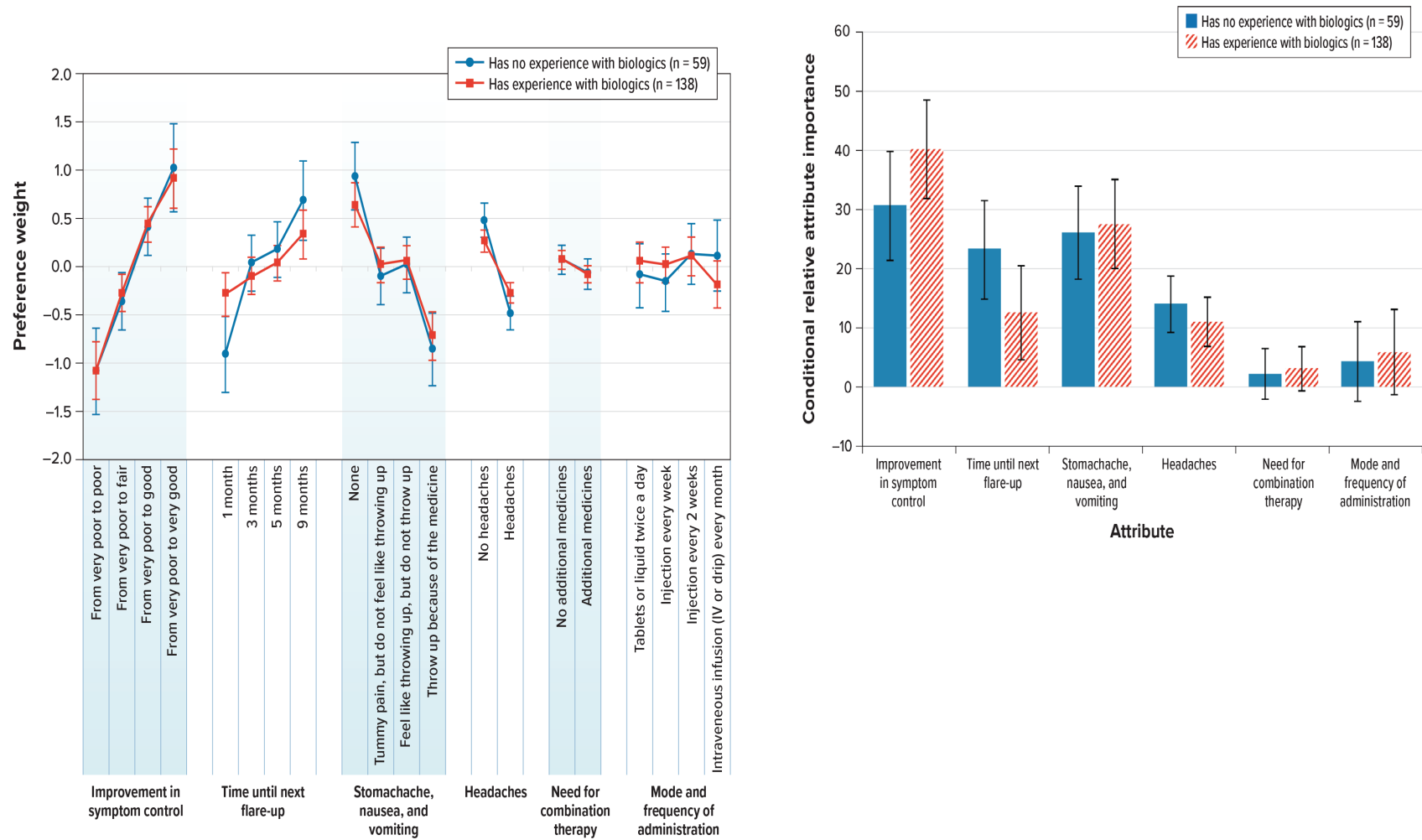
IV = intravenous.

Figure S3. Preference Weights and Conditional Relative Importance Estimates: Adolescents With Methotrexate Experience Versus Adolescents With No Experience With Methotrexate



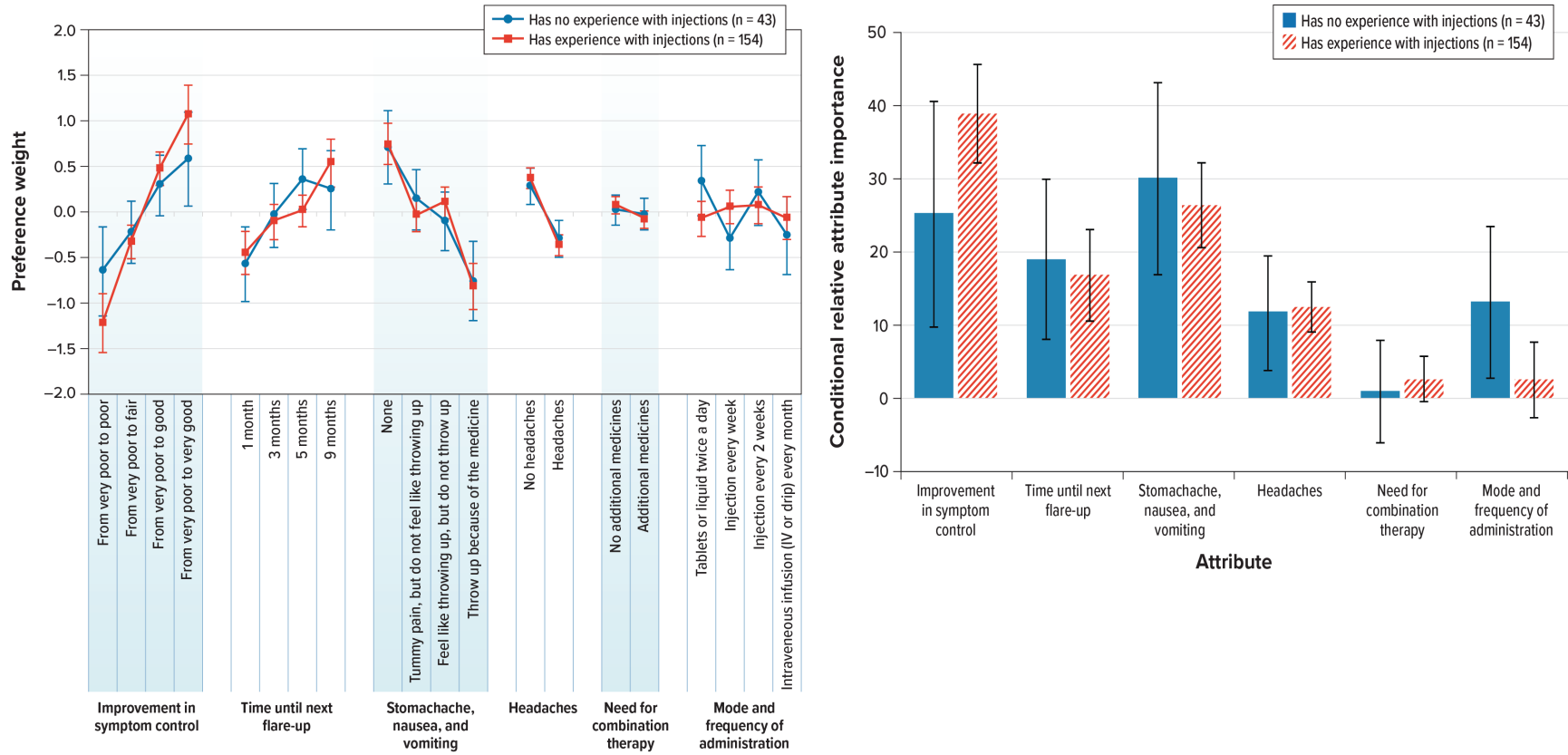
IV = intravenous.

Figure S4. Preference Weights and Conditional Relative Importance Estimates: Adolescents With Biologics Experience Versus Adolescents With No Experience With Biologics



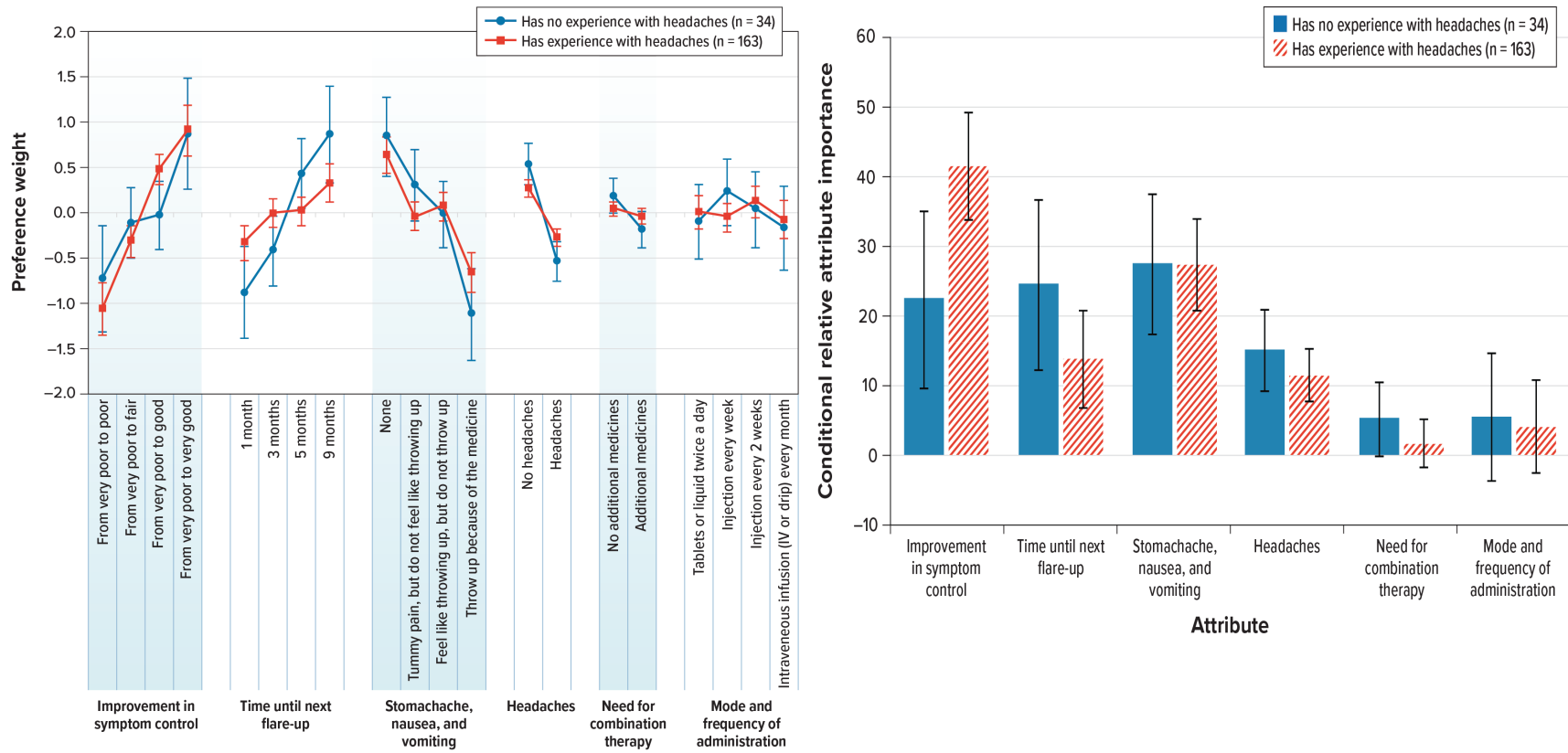
IV = intravenous.

Figure S5. Preference Weights and Conditional Relative Importance Estimates: Adolescents With Injection Experience Versus Adolescents With No Injection Experience



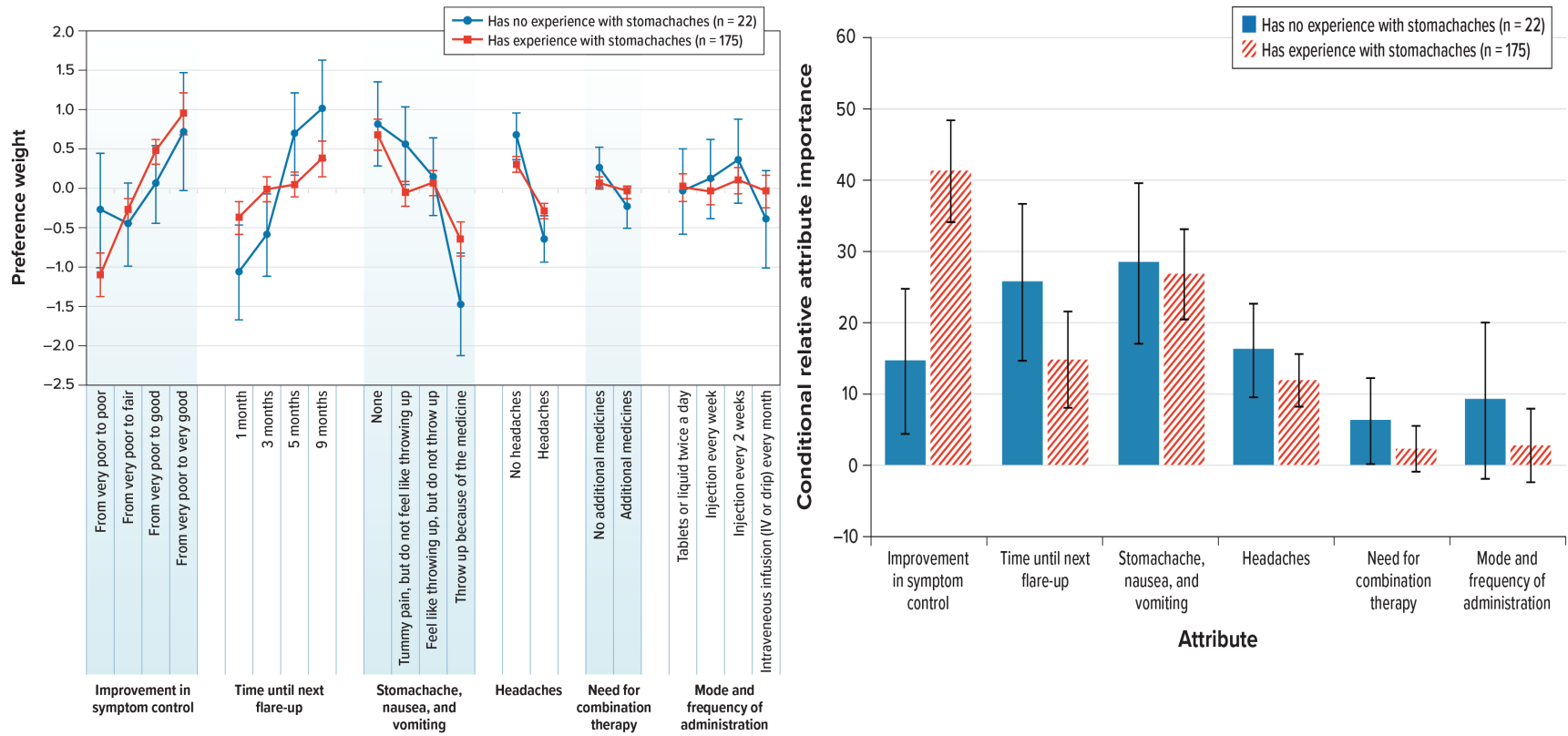
IV = intravenous.

Figure S6. Preference Weights and Conditional Relative Importance Estimates: Adolescents Who Have Experienced Headaches as a Side Effect of Their Treatment Versus Adolescents With No Experience With Headaches as a Side Effect of Their Treatment



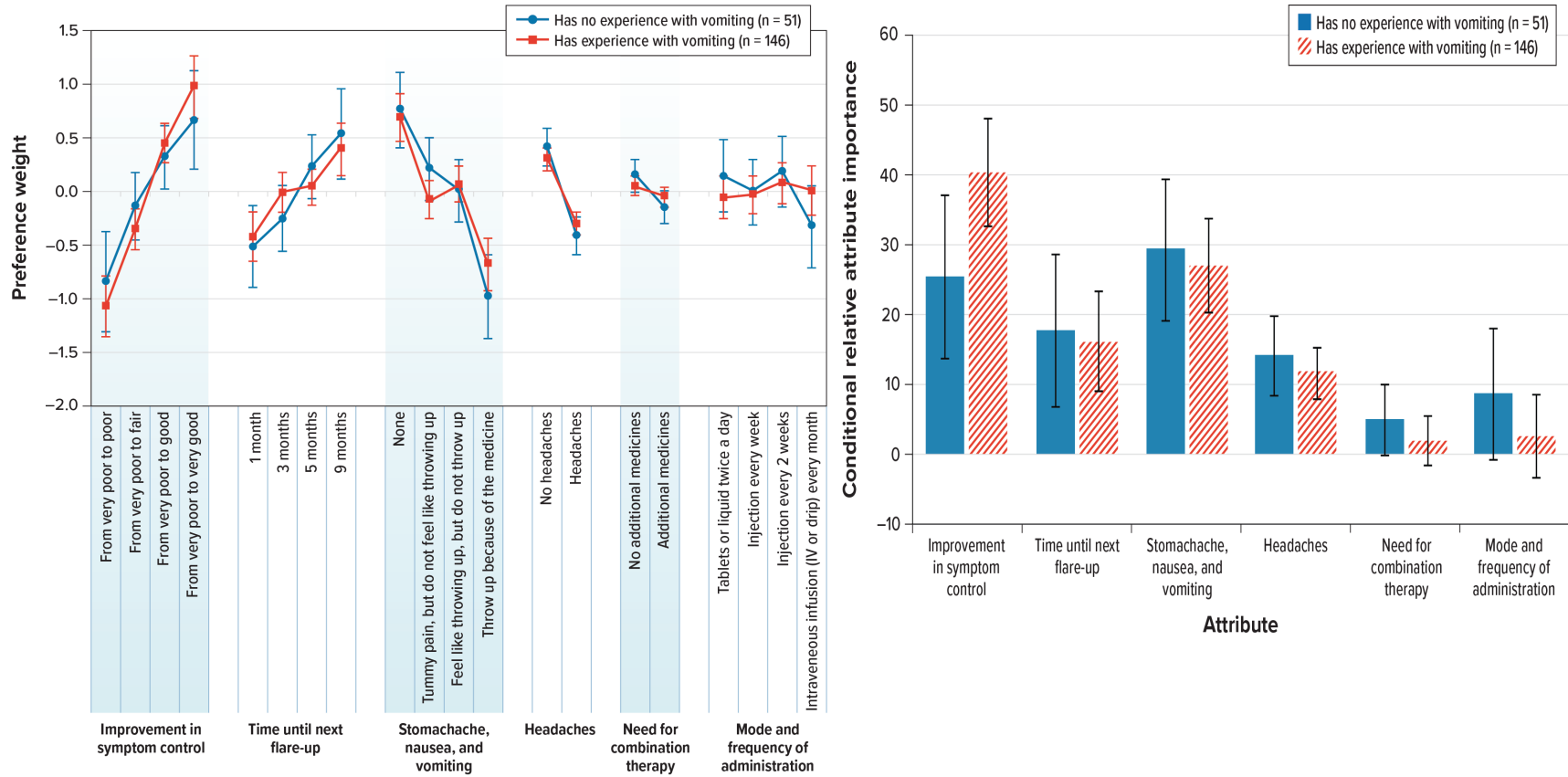
IV = intravenous.

Figure S7. Preference Weights and Conditional Relative Importance Estimates: Adolescents Who Have Experienced Stomachaches as a Side Effect of Their Treatment Versus Adolescents With No Experience With Stomachaches as a Side Effect of Their Treatment



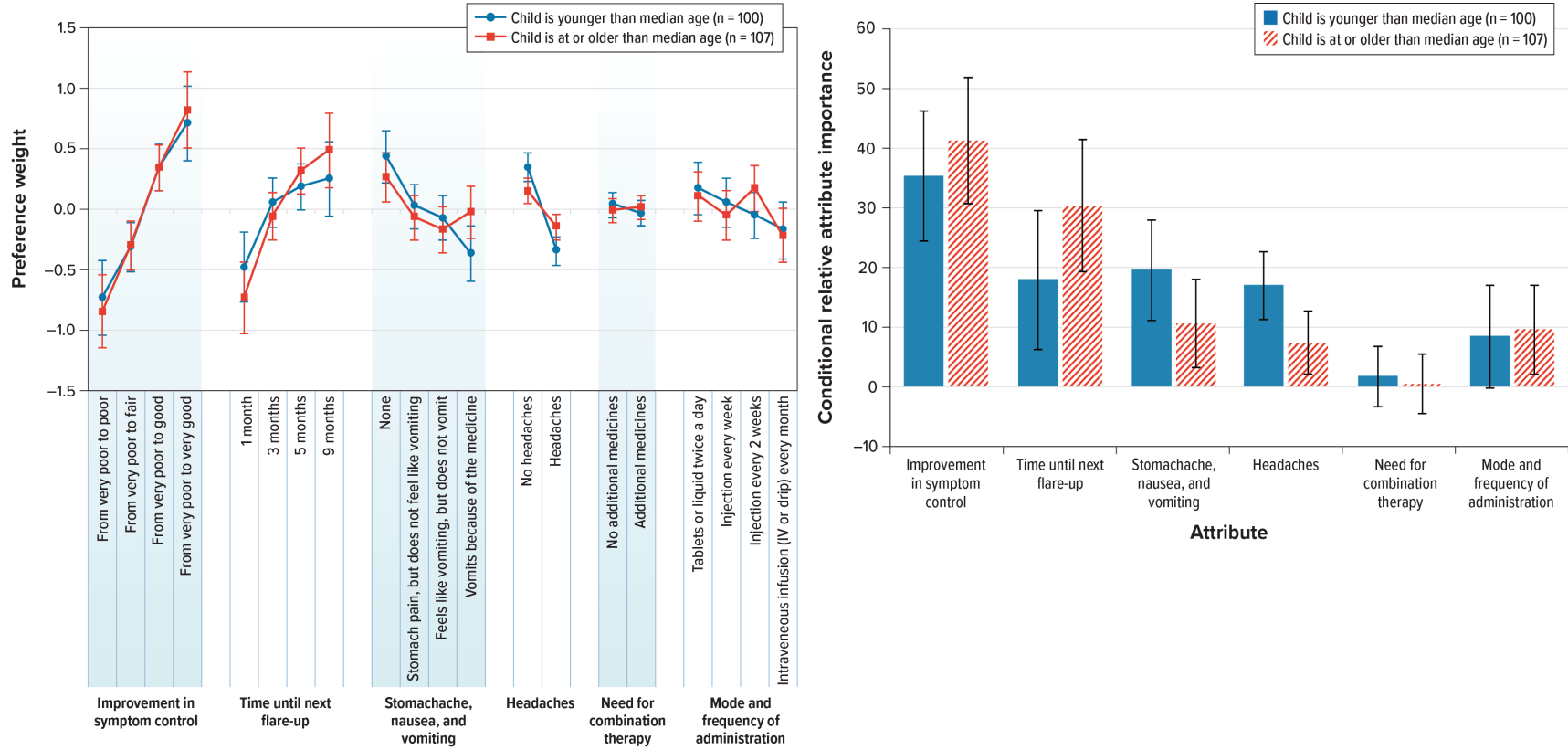
IV = intravenous.

Figure S8. Preference Weights and Conditional Relative Importance Estimates: Adolescents Who Have Experienced Vomiting as a Side Effect of Their Treatment Versus Adolescents With No Experience With Vomiting as a Side Effect of Their Treatment



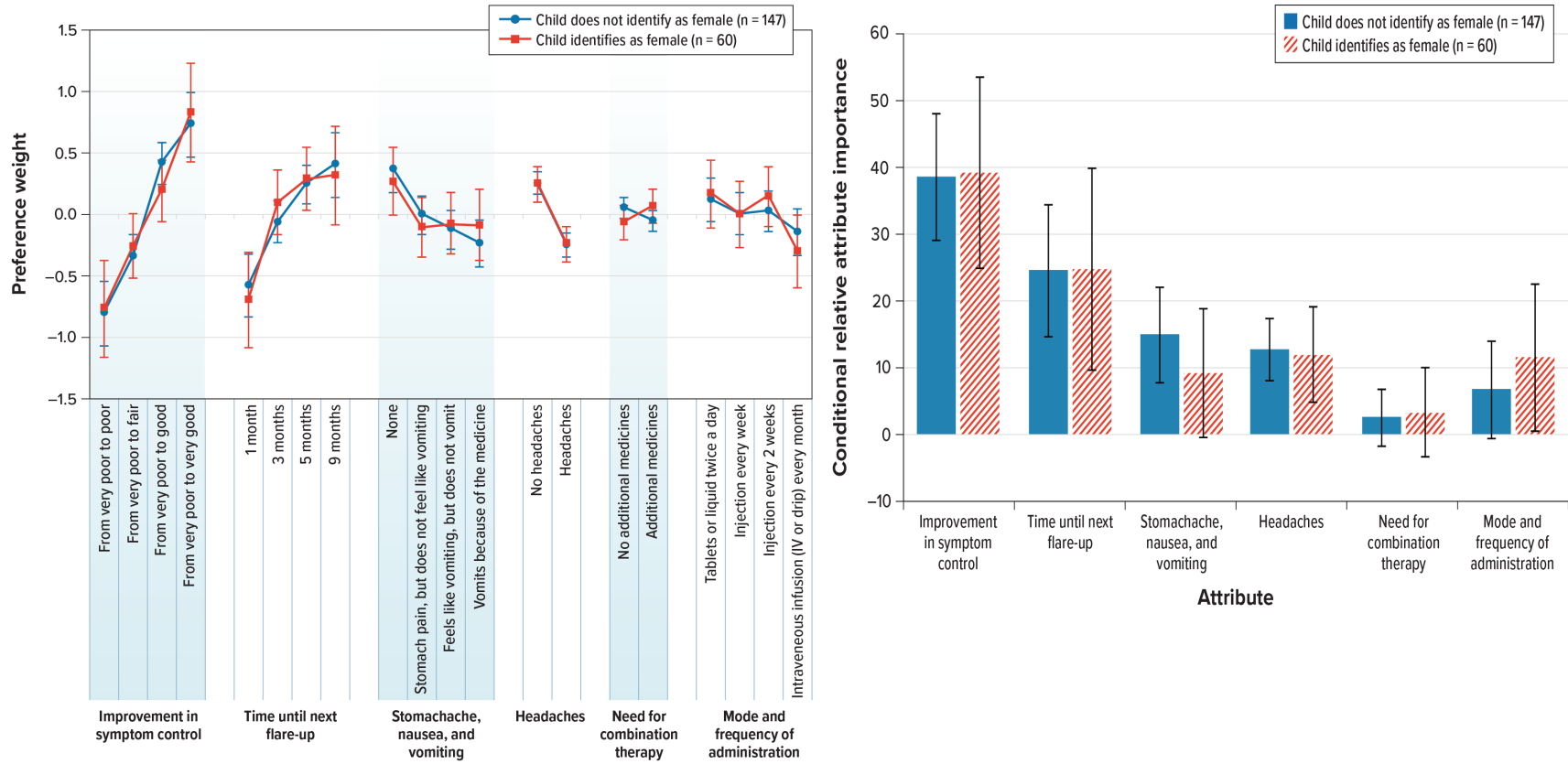
IV = intravenous.

Figure S9 Preference Weights and Conditional Relative Importance Estimates: Caregivers With a Child Younger Than Median Age Versus Caregivers With a Child at or Older Than Median Age



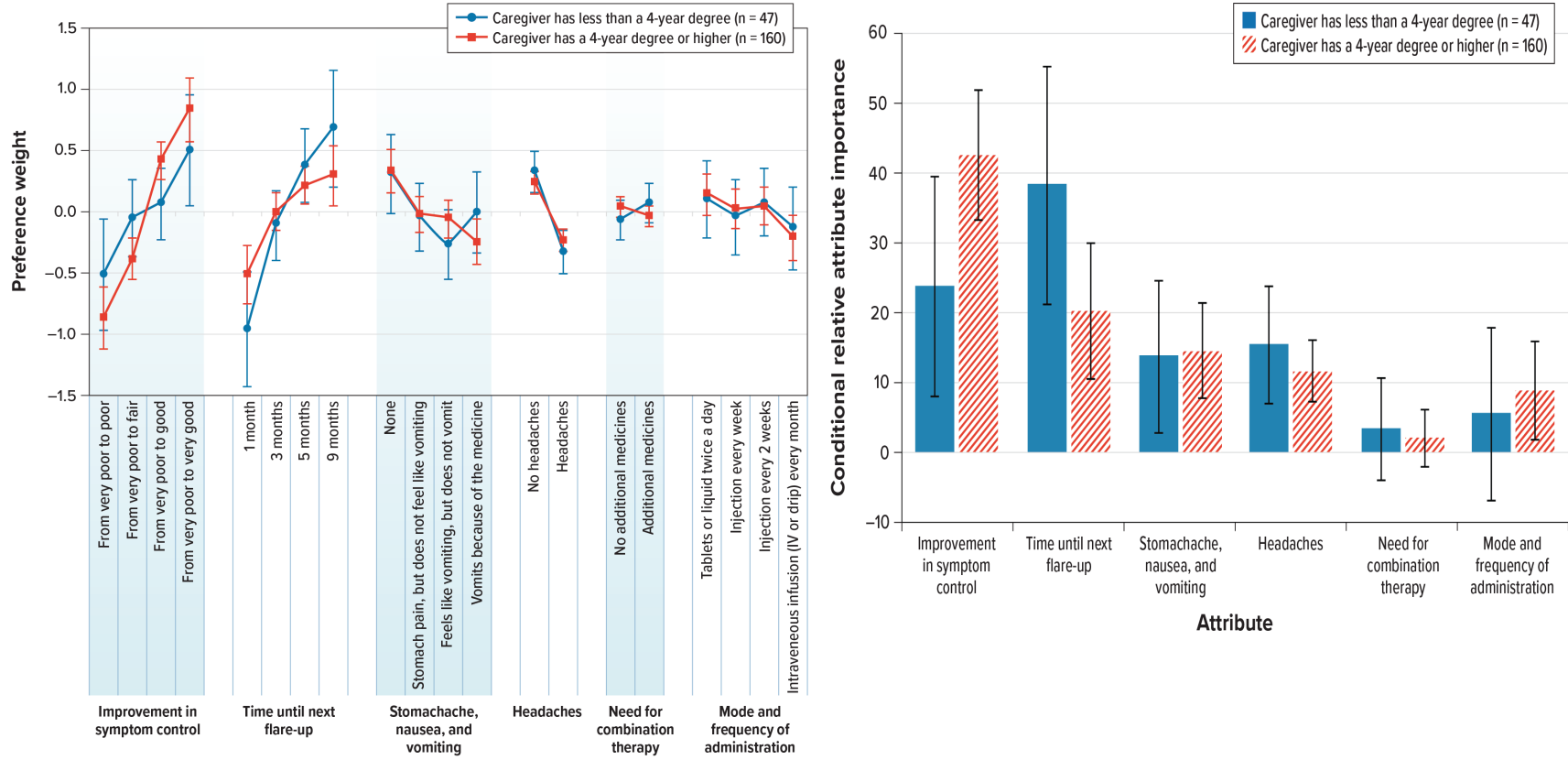
IV = intravenous.

Figure S10. Preference Weights and Conditional Relative Importance Estimates: Caregivers With a Child Who Identifies as Female Versus Caregivers With a Child Who Does Not Identify as Female



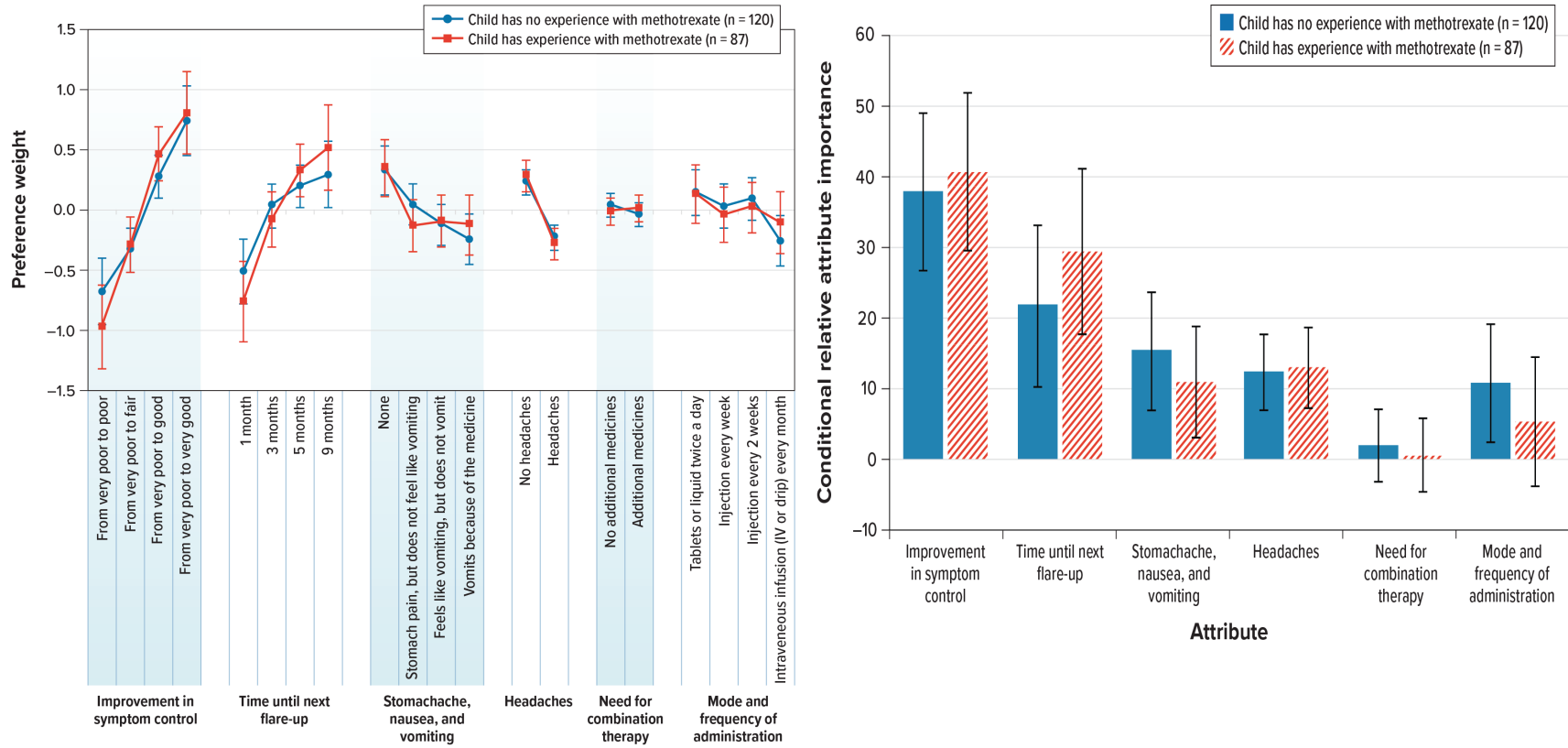
IV = intravenous.

Figure S11. Preference Weights and Conditional Relative Importance Estimates: Caregivers With a 4-Year Degree or Higher Versus Caregivers With Less Than a 4-Year Degree



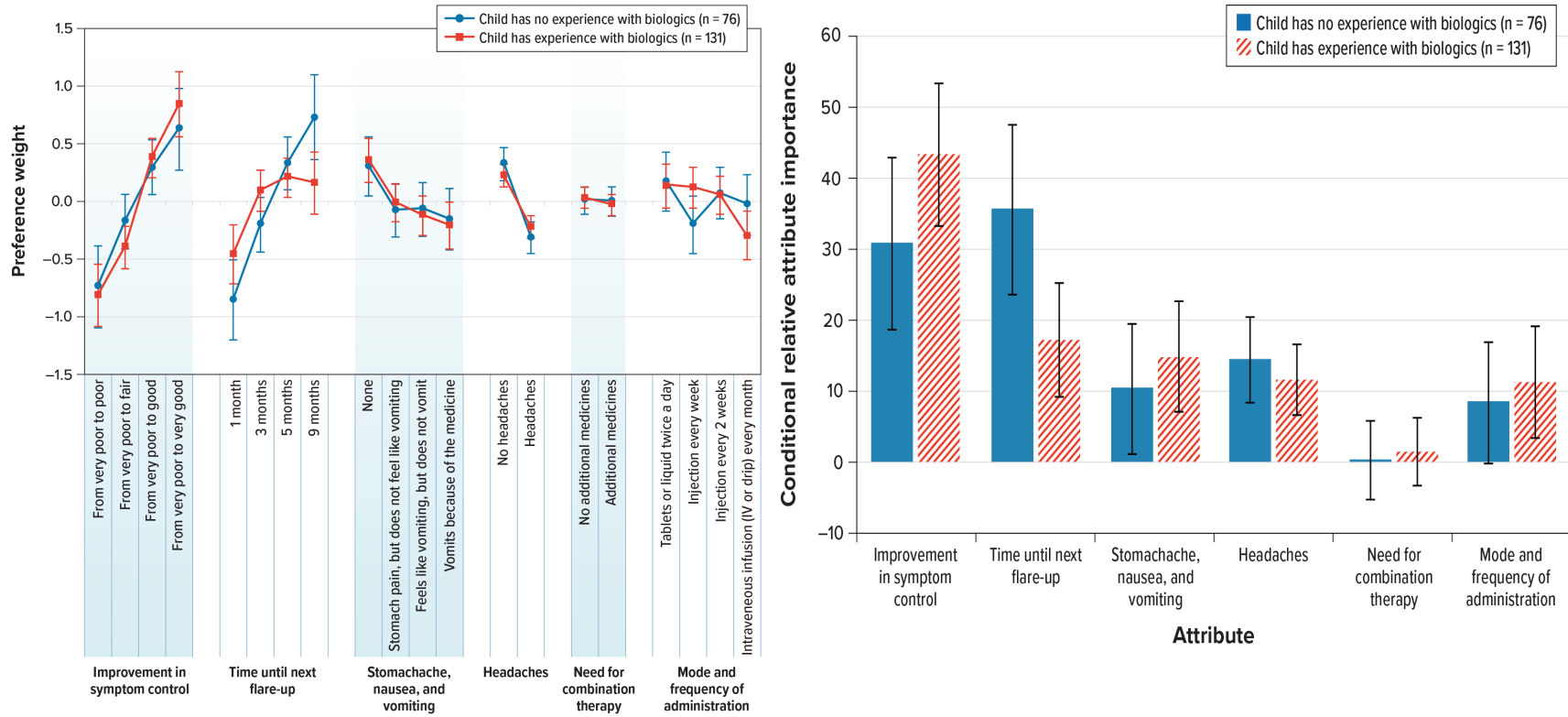
IV = intravenous.

Figure S12. Preference Weights and Conditional Relative Importance Estimates: Caregivers With a Child Who Has Experience With Methotrexate Versus Caregivers With a Child Who Has No Experience With Methotrexate



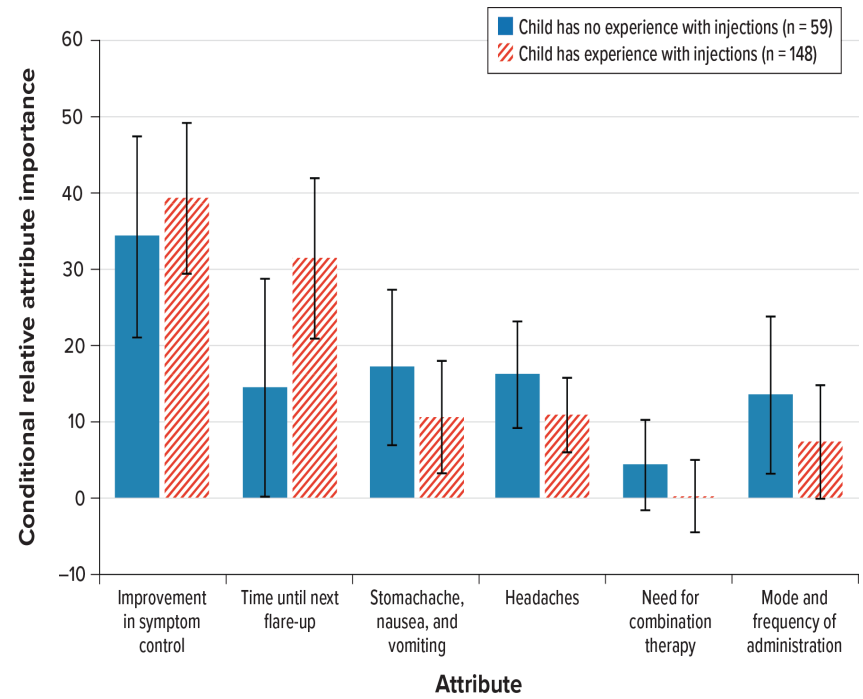
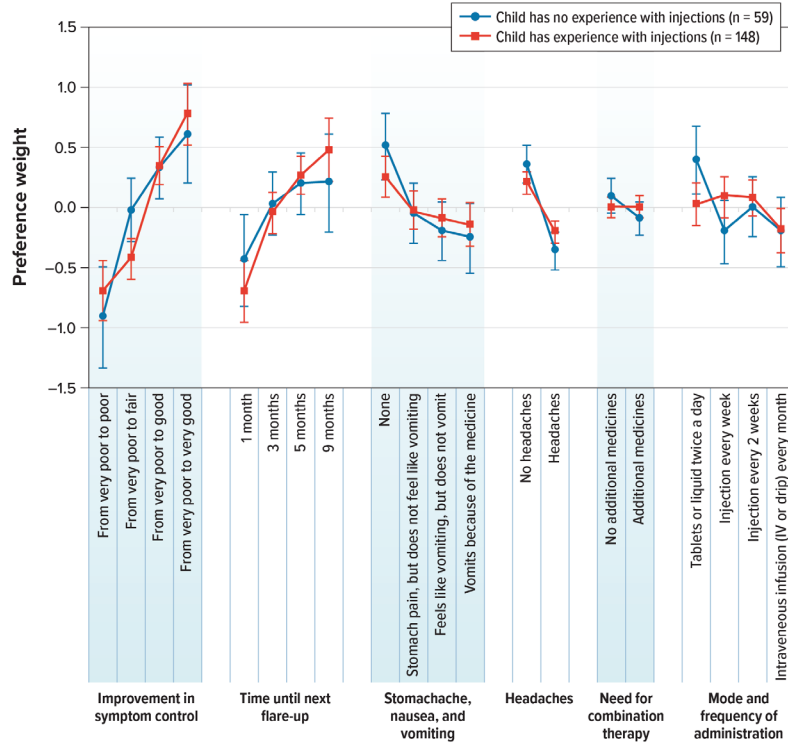
IV = intravenous.

Figure S13. Preference Weights and Conditional Relative Importance Estimates: Caregivers With a Child Who Has Experience With Biologics Versus Caregivers With a Child Who Has No Experience With Biologics



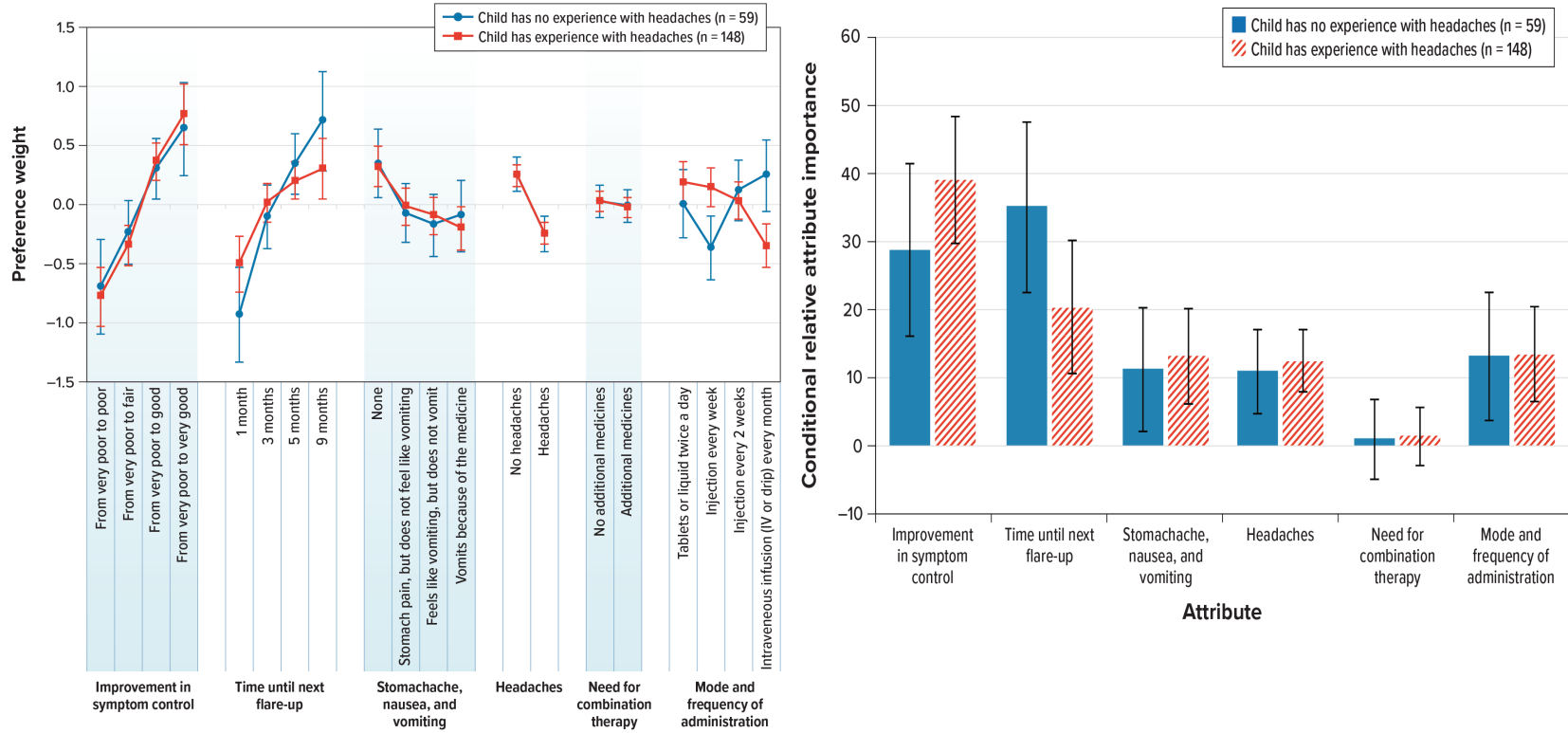
IV = intravenous.

Figure S14. Preference Weights and Conditional Relative Importance Estimates: Caregivers With a Child Who Has Experience With Injections Versus Caregivers With a Child Who Has No Experience With Injections



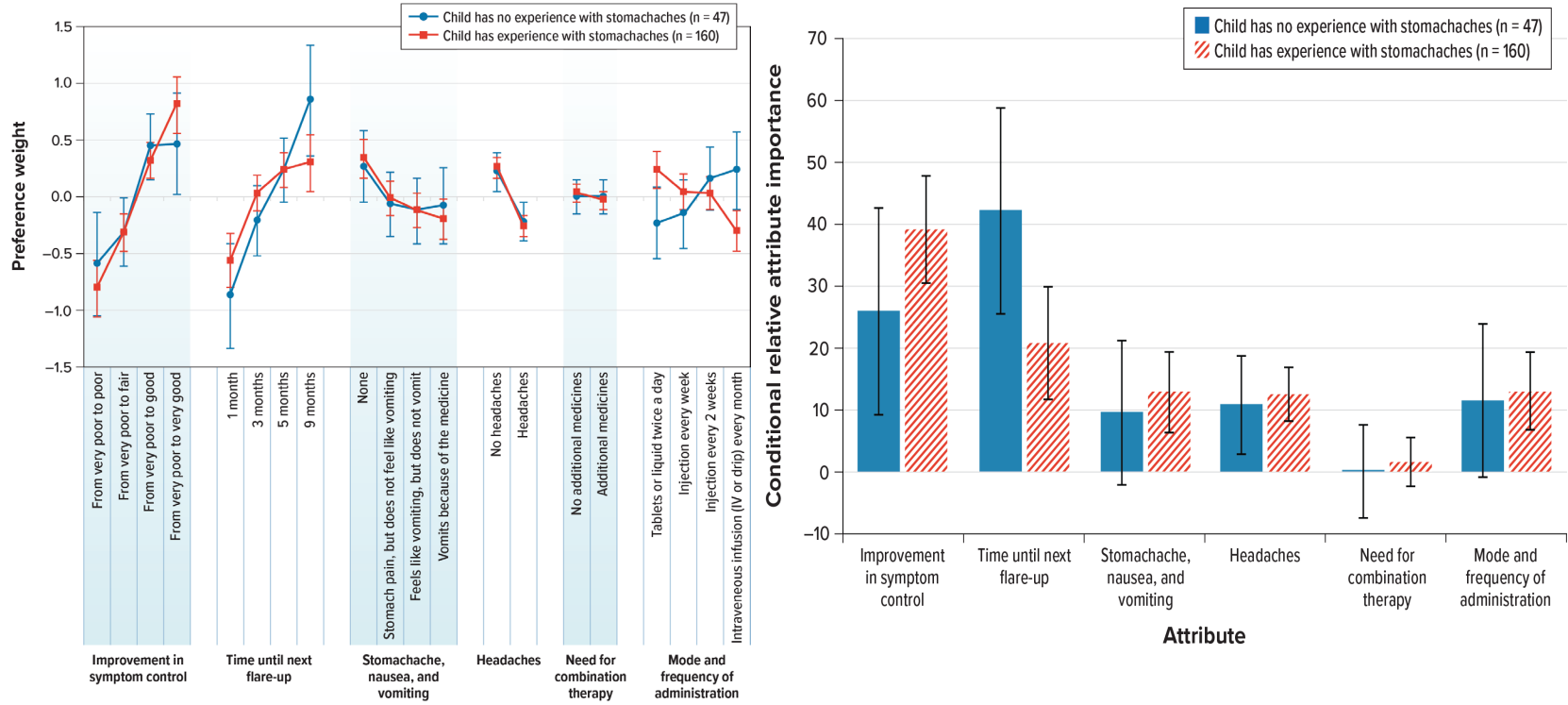
IV = intravenous.

Figure S15. Preference Weights and Conditional Relative Importance Estimates: Caregivers With a Child Who Has Experience With Headaches as a Side Effect of Their Treatment Versus Caregivers With a Child Who Has No Experience With Headaches as a Side Effect of Their Treatment



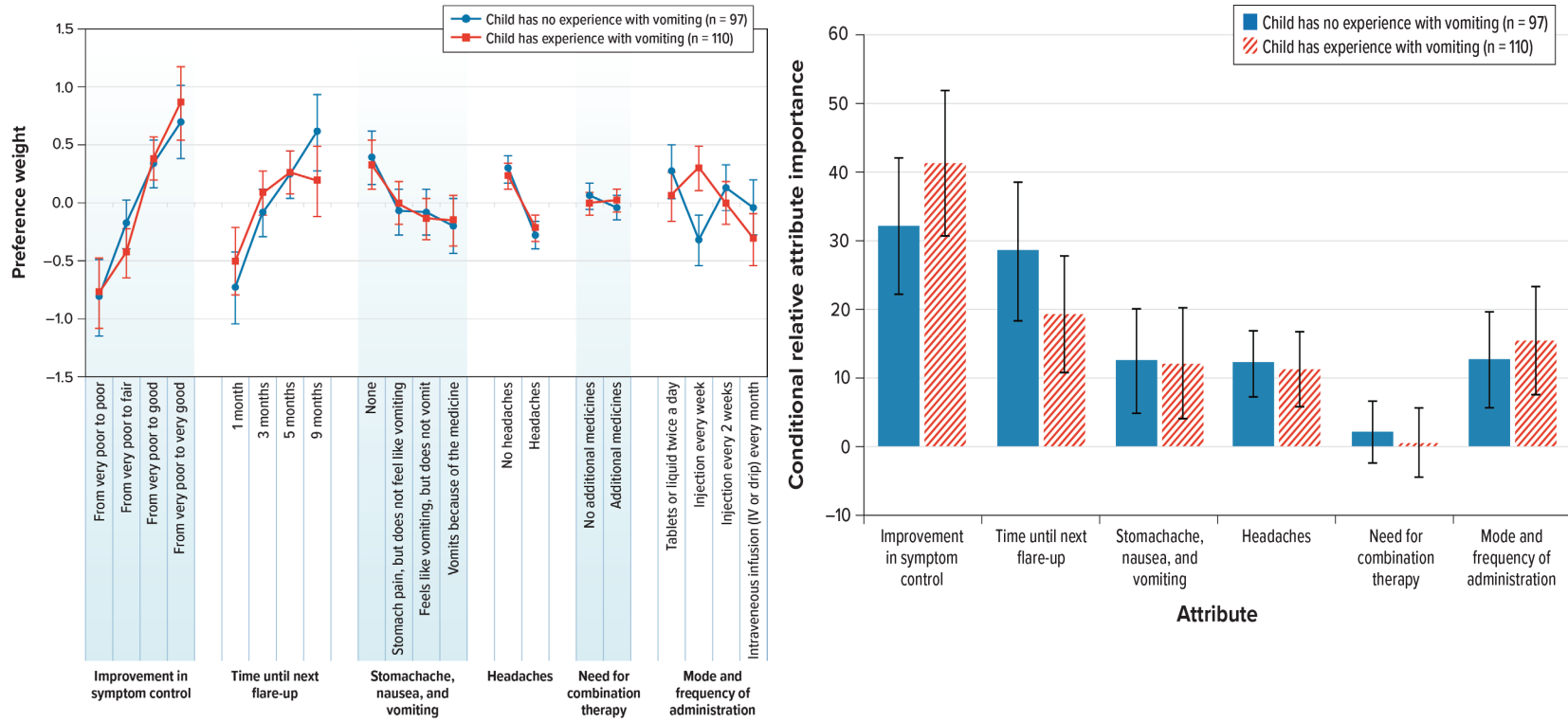
IV = intravenous.

Figure S16. Preference Weights and Conditional Relative Importance Estimates: Caregivers With a Child Who Has Experience With Stomachaches as a Side Effect of Their Treatment Versus Caregivers With a Child Who Has No Experience With Stomachaches as a Side Effect of Their Treatment



IV = intravenous.

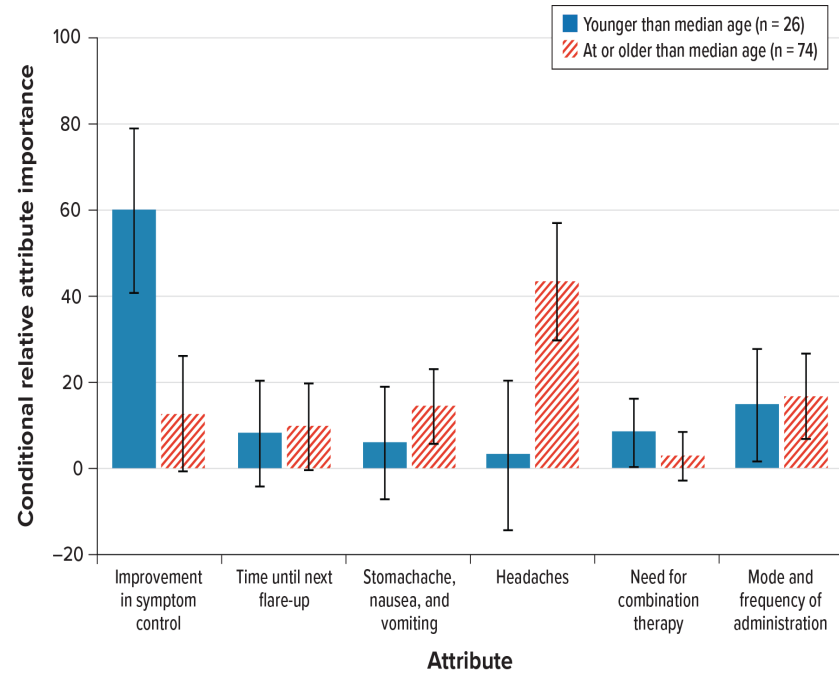
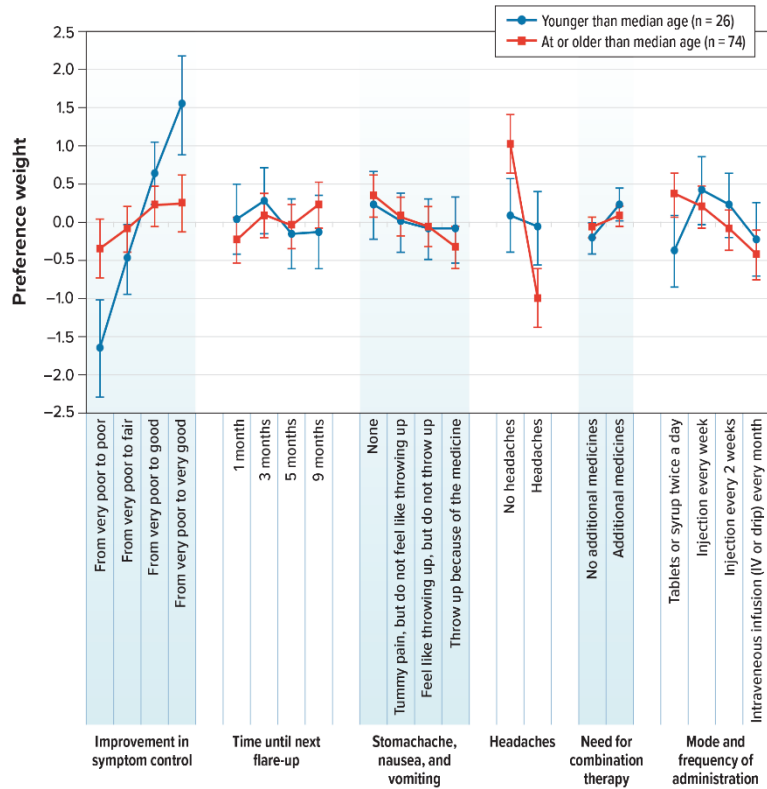
Figure S17. Preference Weights and Conditional Relative Importance Estimates: Caregivers With a Child Who Has Experience With Vomiting as a Side Effect of Their Treatment Versus Caregivers With a Child Who Has No Experience With Vomiting as a Side Effect of Their Treatment



IV = intravenous.

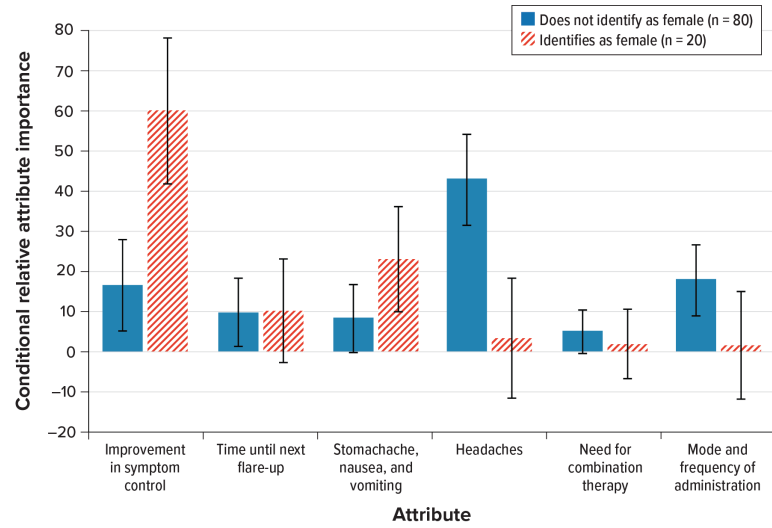
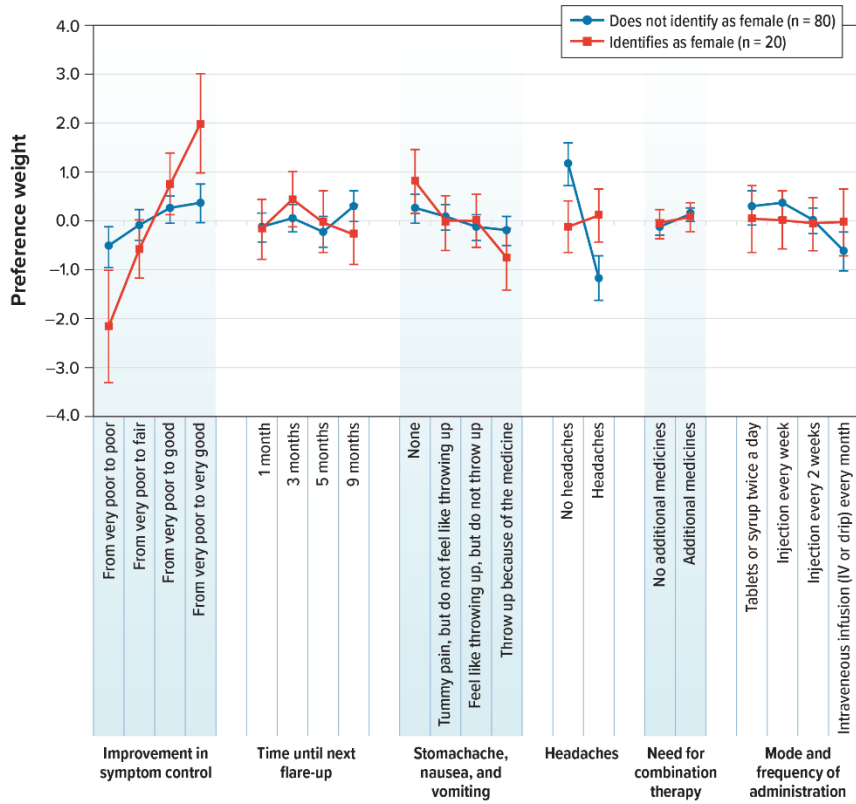
Appendix B: Subgroup Analyses, UK Sample

Figure S18. Preference Weights and Conditional Relative Importance Estimates: Adolescents Younger Than Median Age Versus Adolescents at or Older Than Median Age



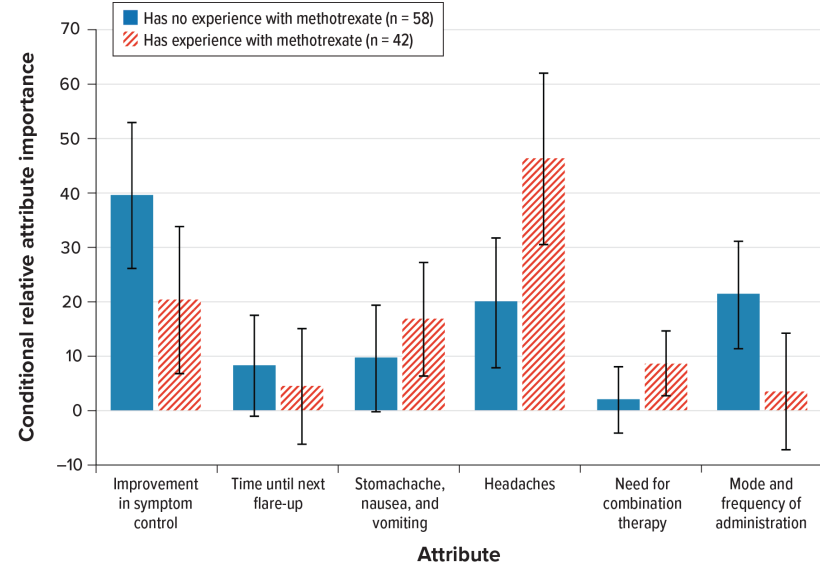
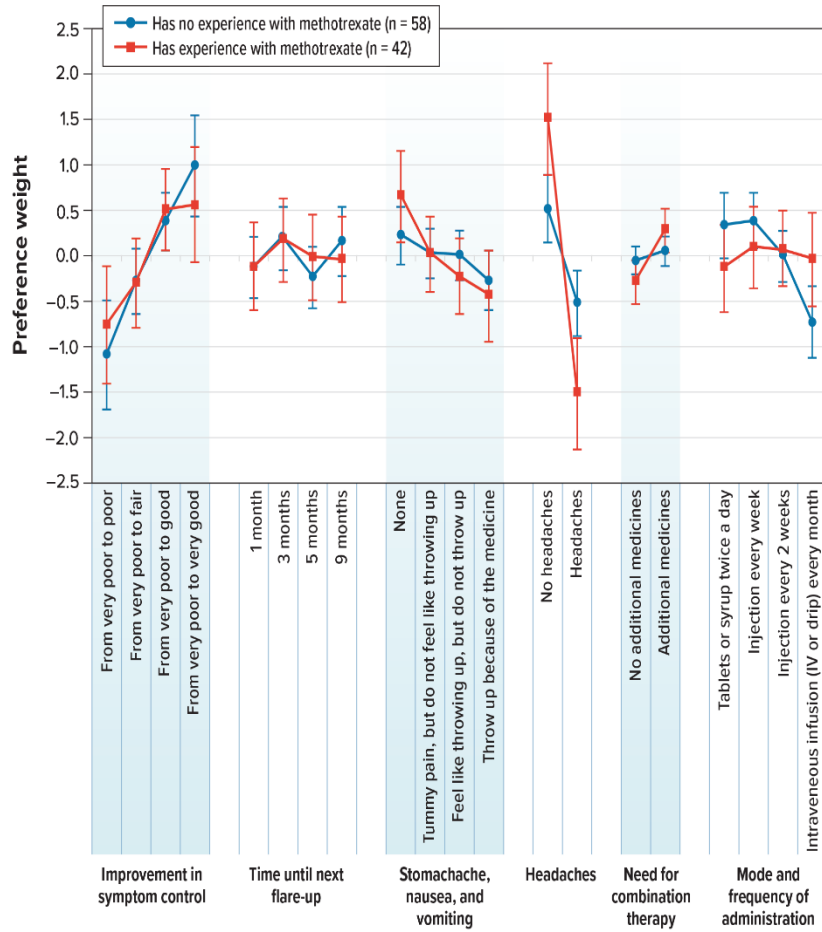
IV = intravenous.

Figure S19. Preference Weights and Conditional Relative Importance Estimates: Adolescents Who Identify as Female Versus Adolescents Who Do Not Identify as Female



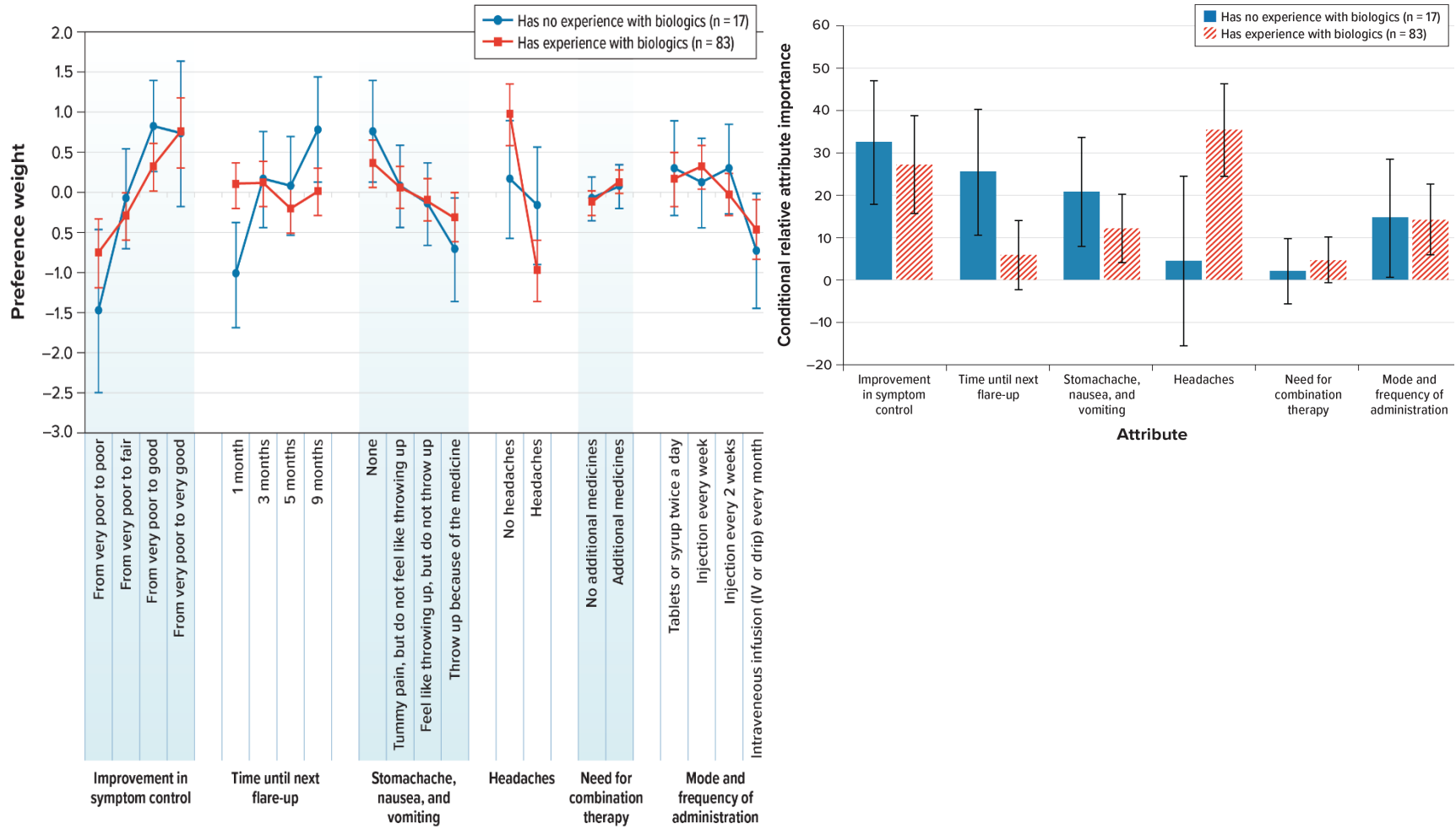
IV = intravenous.

Figure S20. Preference Weights and Conditional Relative Importance Estimates: Adolescents With Methotrexate Experience Versus Adolescents With No Experience With Methotrexate



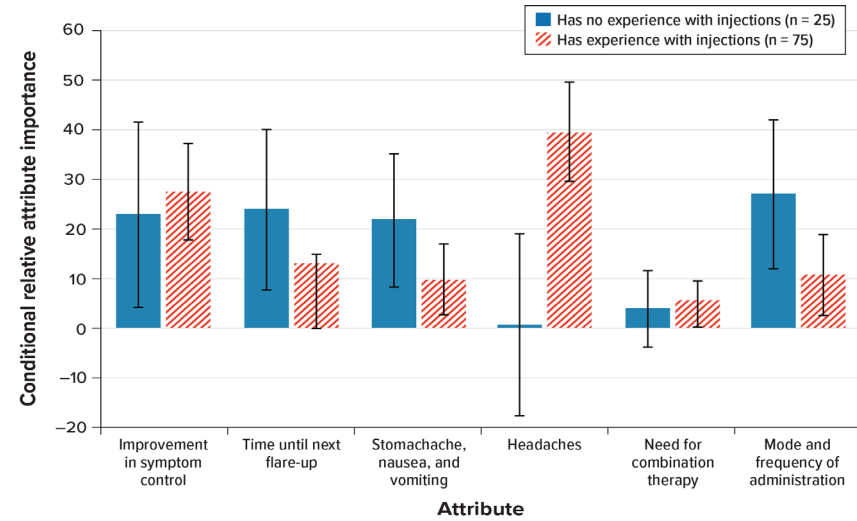
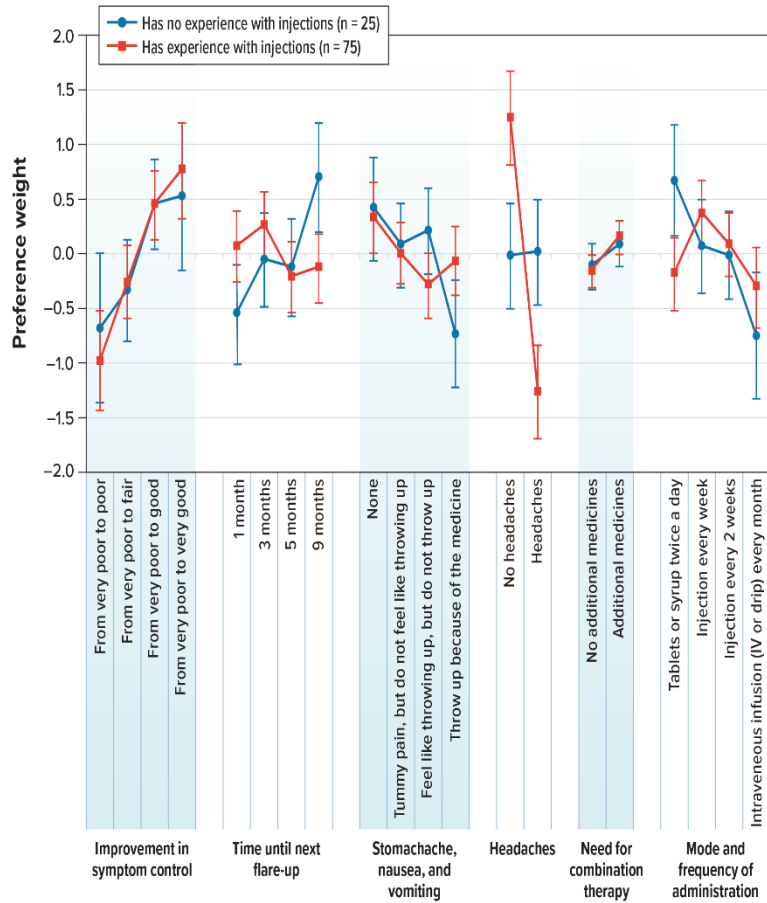
IV = intravenous.

Figure S21. Preference Weights and Conditional Relative Importance Estimates: Adolescents With Biologics Experience Versus Adolescents With No Experience With Biologics



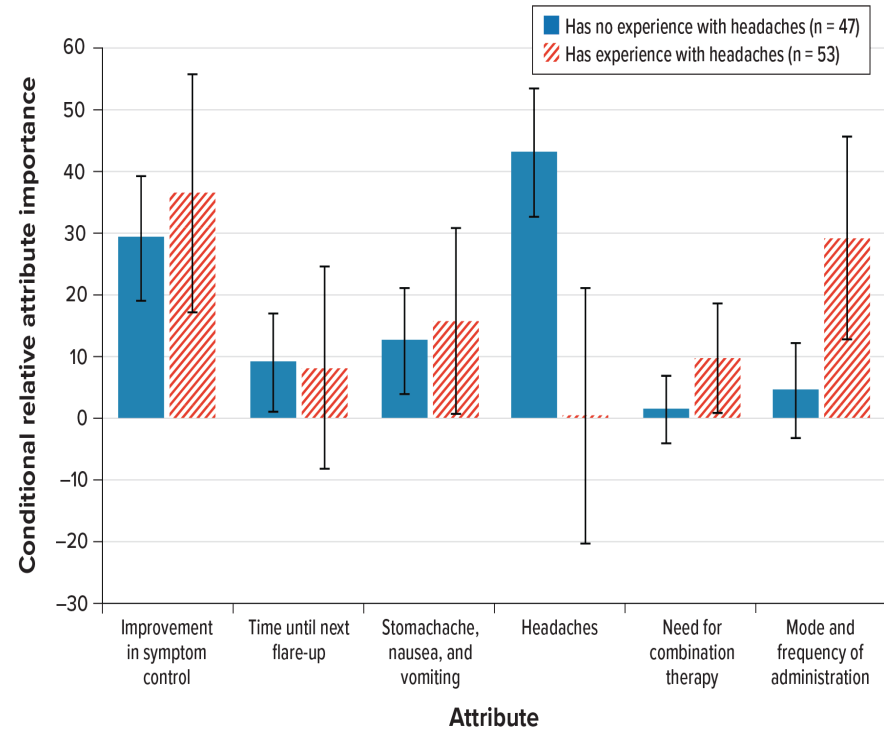
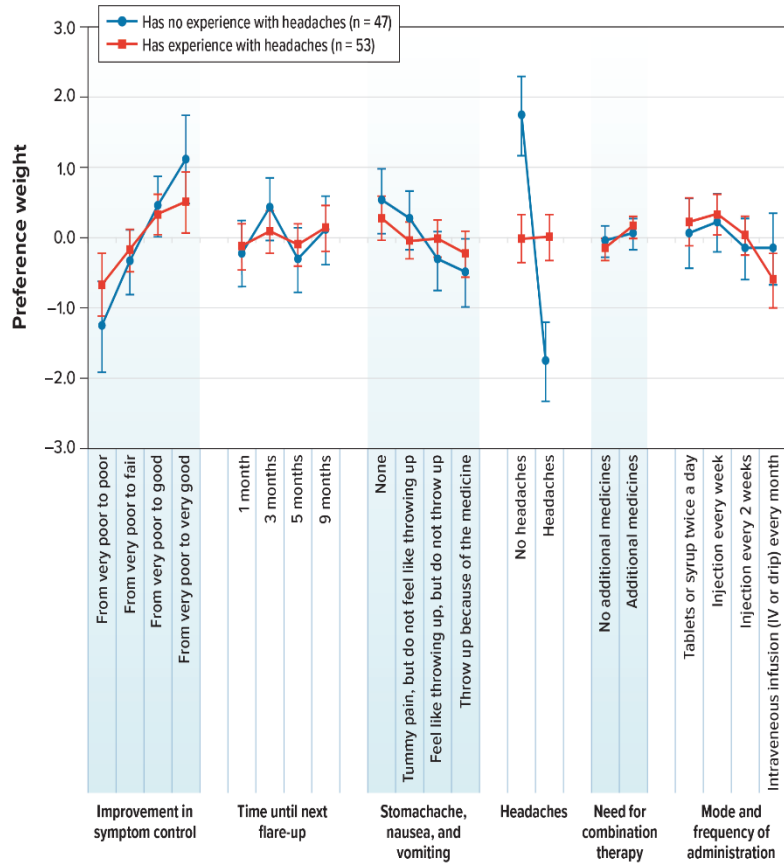
IV = intravenous.

Figure S22. Preference Weights and Conditional Relative Importance Estimates: Adolescents With Injection Experience Versus Adolescents With No Injection Experience



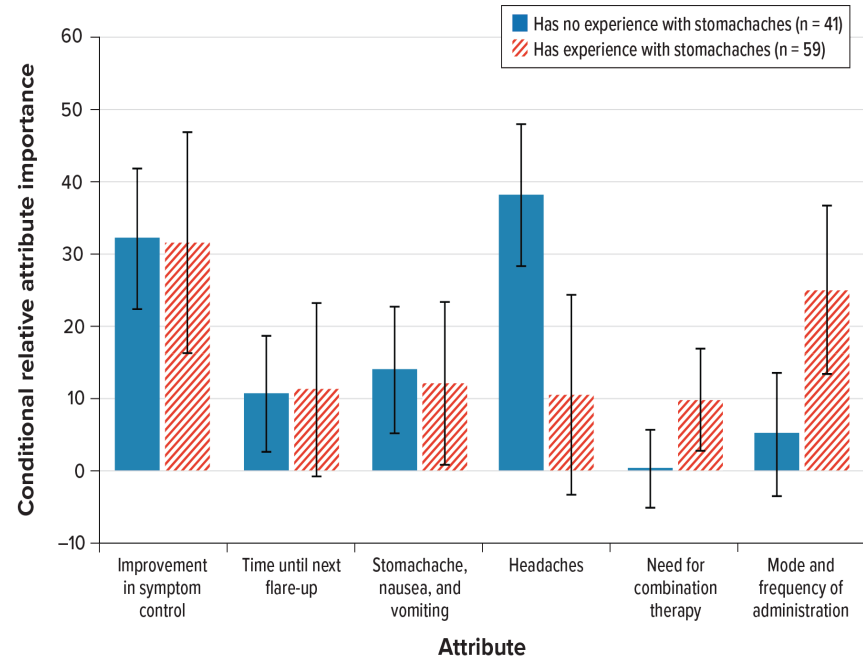
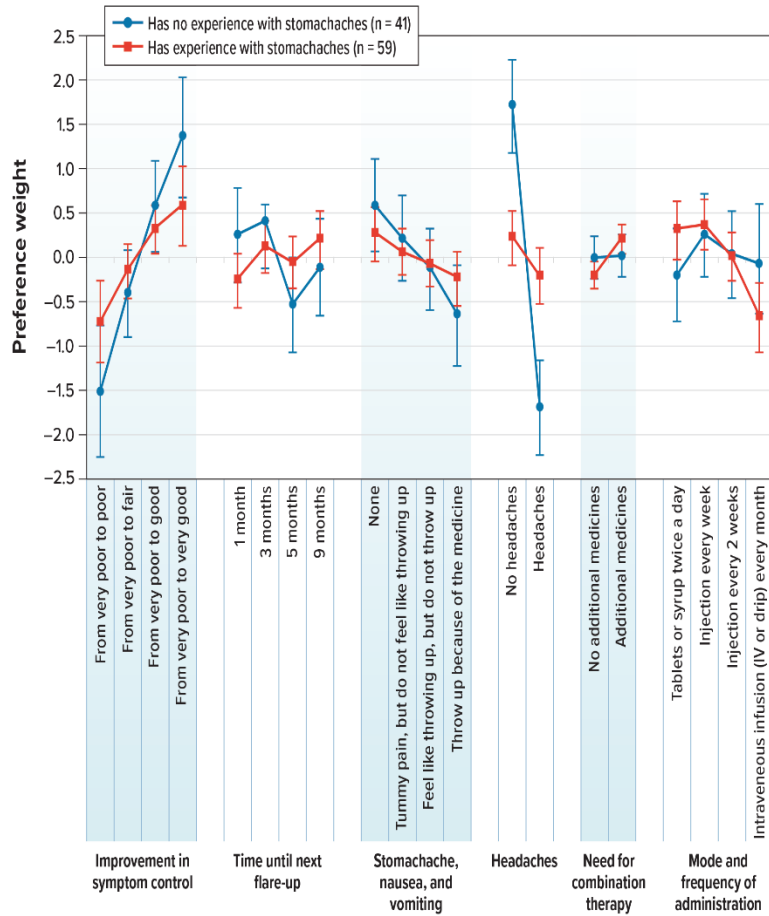
IV = intravenous.

Figure S23. Preference Weights and Conditional Relative Importance Estimates: Adolescents Who Have Experienced Headaches as a Side Effect of Their Treatment Versus Adolescents With No Experience With Headaches as a Side Effect of Their Treatment



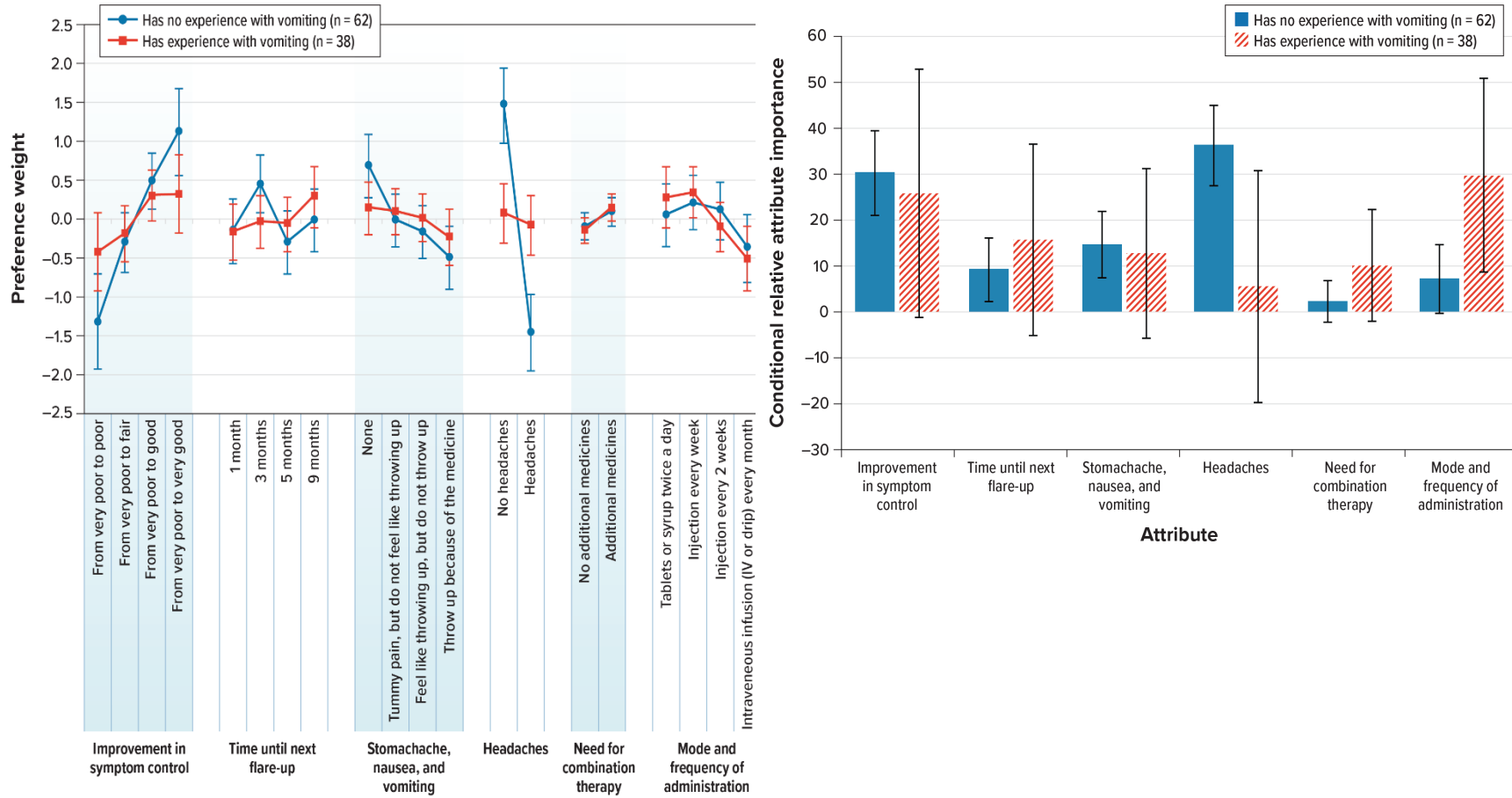
IV = intravenous.

Figure S24. Preference Weights and Conditional Relative Importance Estimates: Adolescents Who Have Experienced Stomachaches as a Side Effect of Their Treatment Versus Adolescents With No Experience With Stomachaches as a Side Effect of Their Treatment



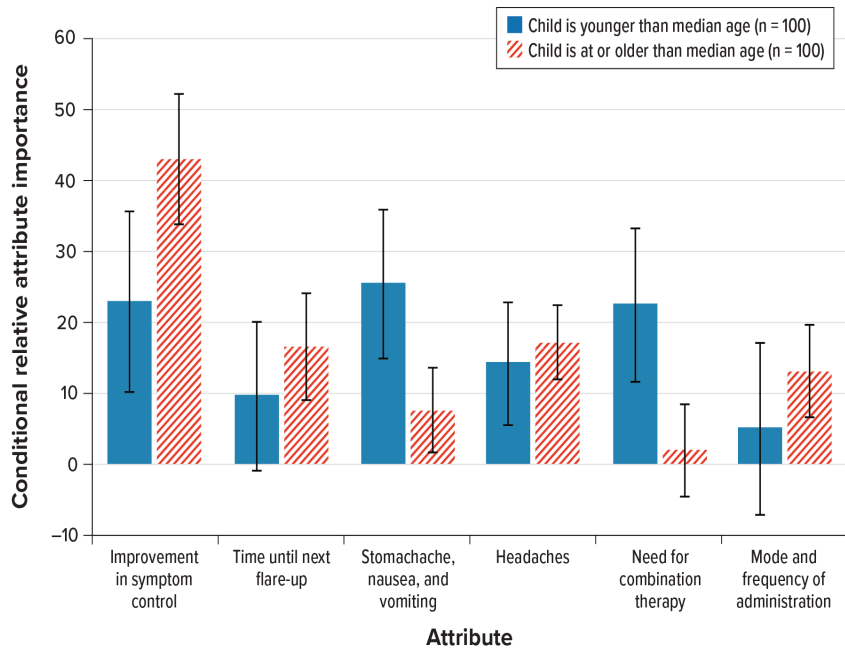
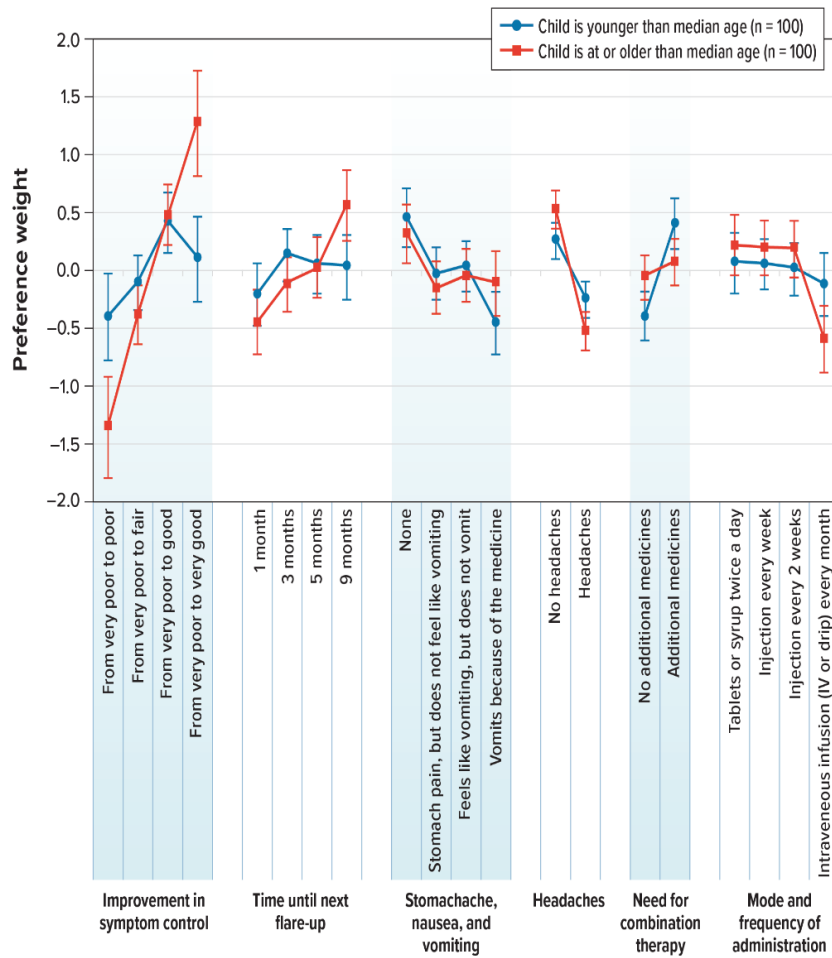
IV = intravenous.

Figure S25. Preference Weights and Conditional Relative Importance Estimates: Adolescents Who Have Experienced Vomiting as a Side Effect of Their Treatment Versus Adolescents With No Experience With Vomiting as a Side Effect of Their Treatment



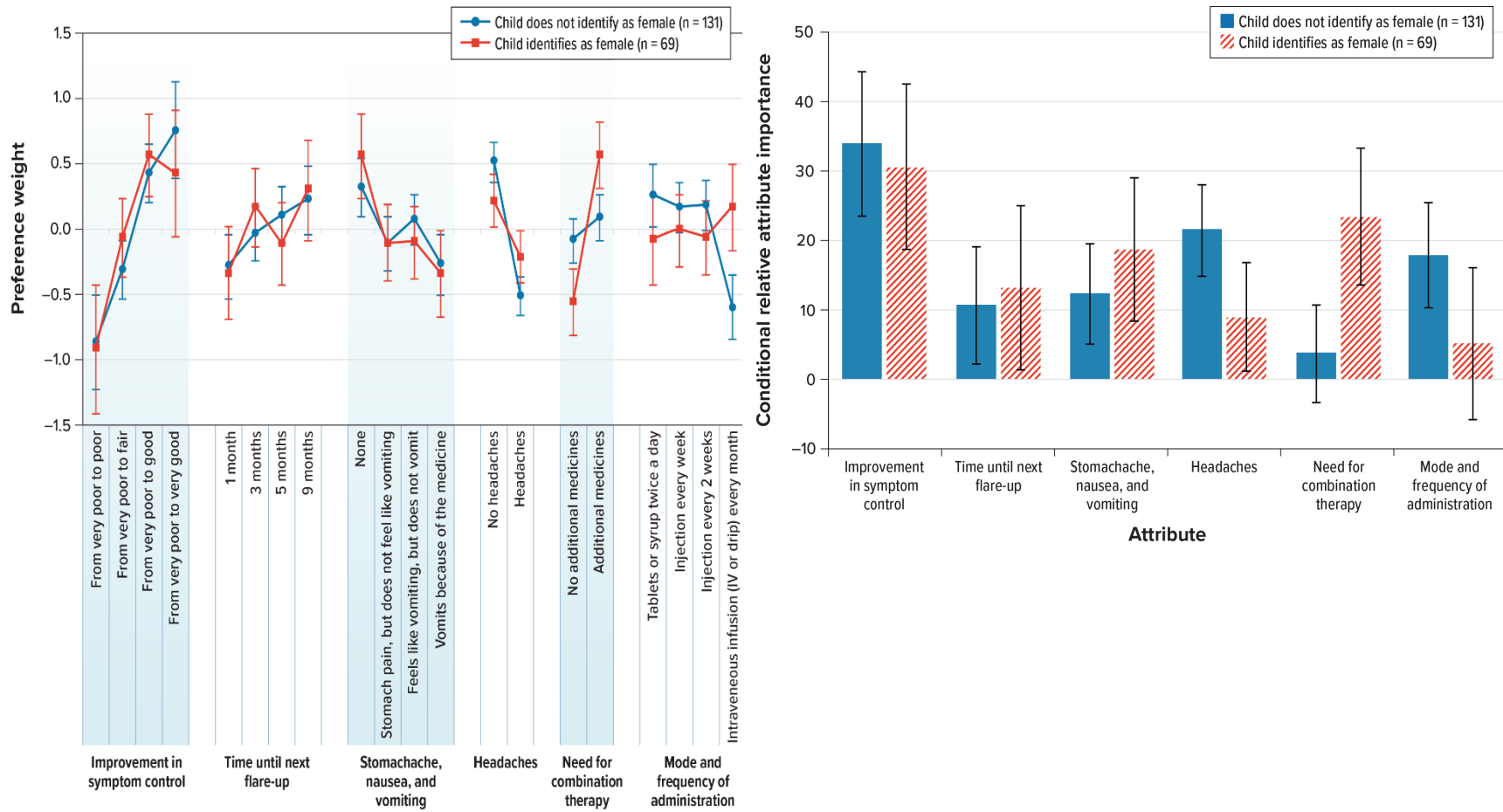
IV = intravenous.

Figure S26. Preference Weights and Conditional Relative Importance Estimates: Caregivers With a Child Younger Than Median Age Versus Caregivers With a Child at or Older Than Median Age



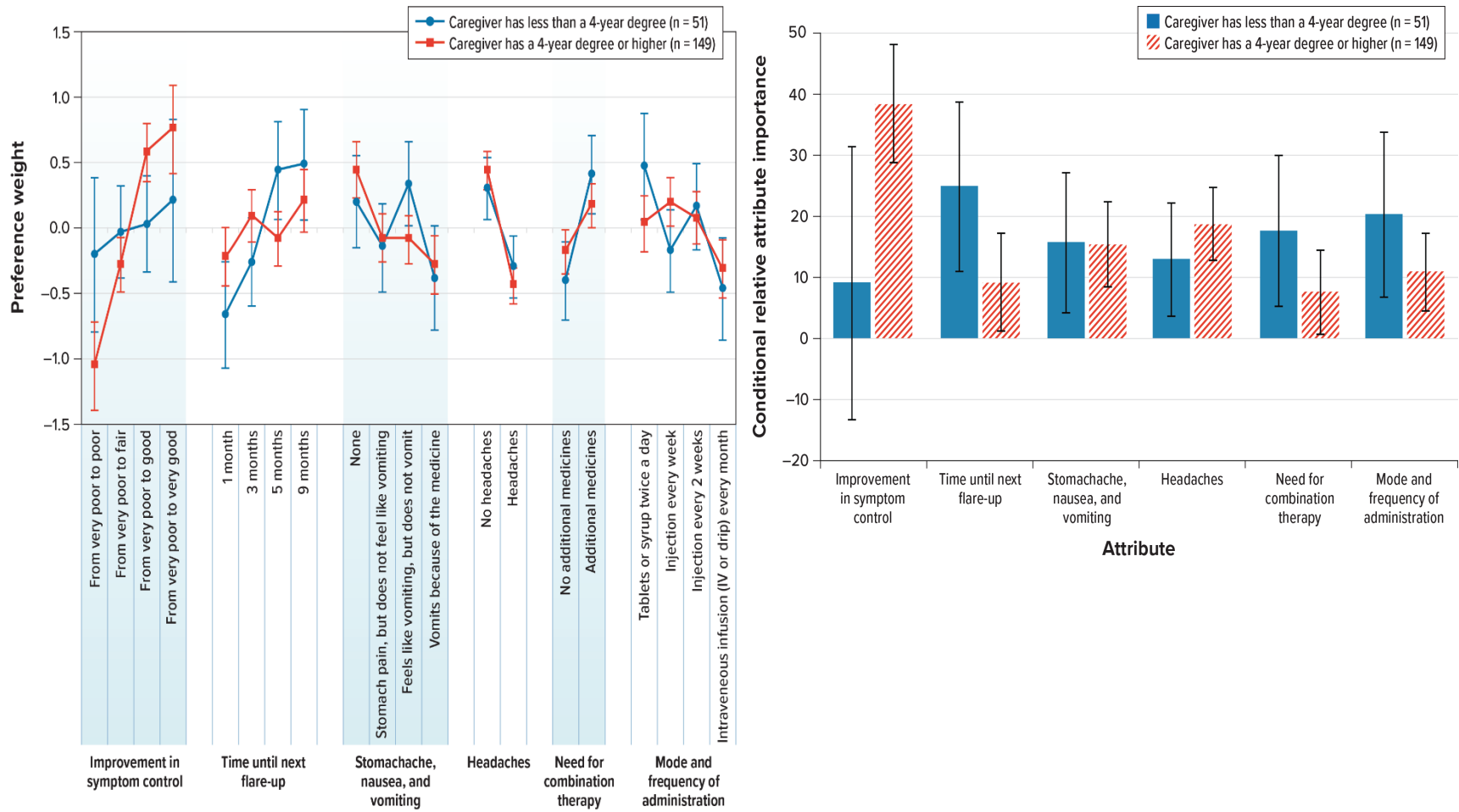
IV = intravenous.

Figure S27. Preference Weights and Conditional Relative Importance Estimates: Caregivers With a Child Who Identifies as Female Versus Caregivers With a Child Who Does Not Identify as Female



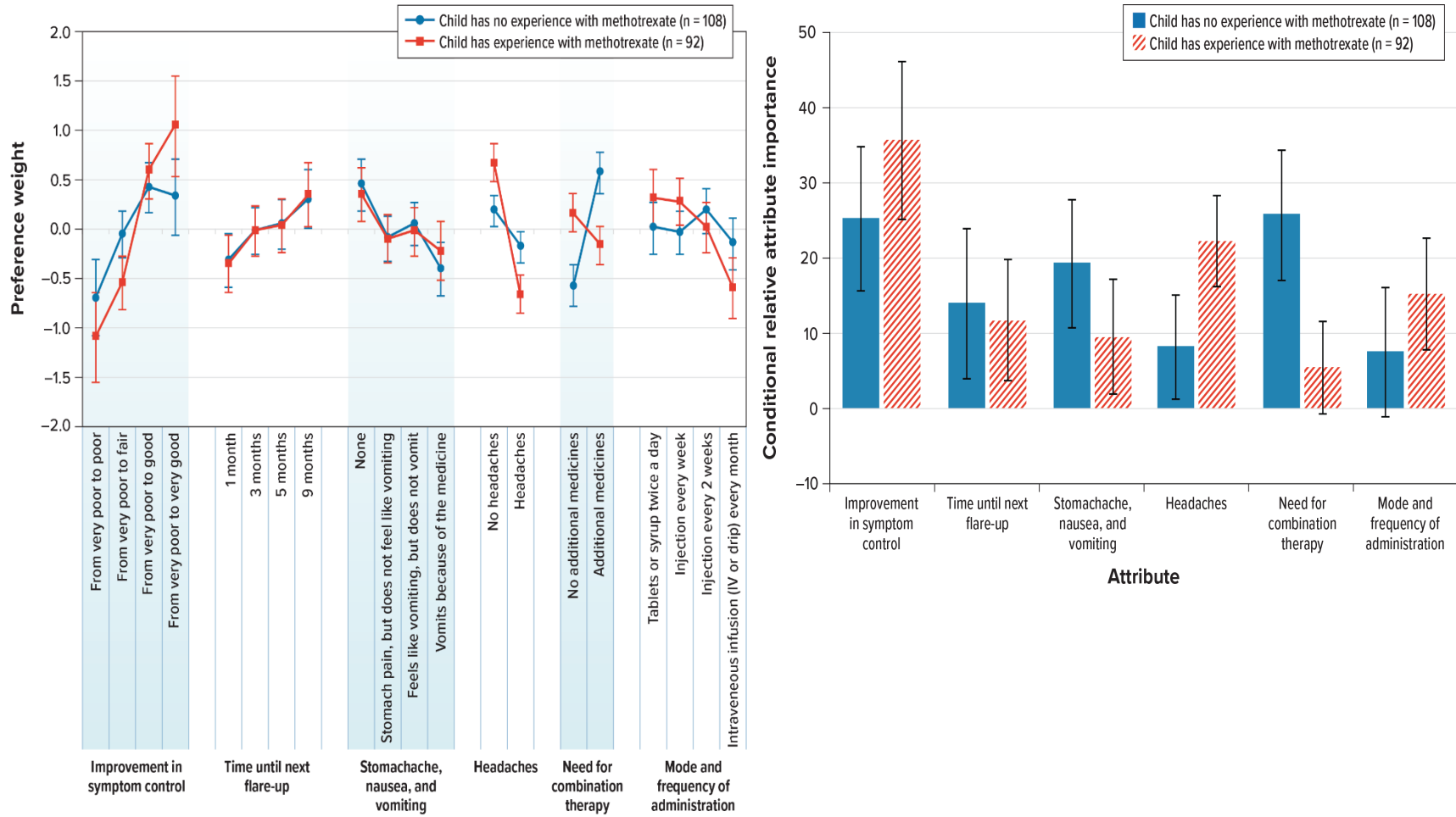
IV = intravenous.

Figure S28. Preference Weights and Conditional Relative Importance Estimates: Caregivers With a 4-Year Degree or Higher Versus Caregivers With Less Than a 4-Year Degree



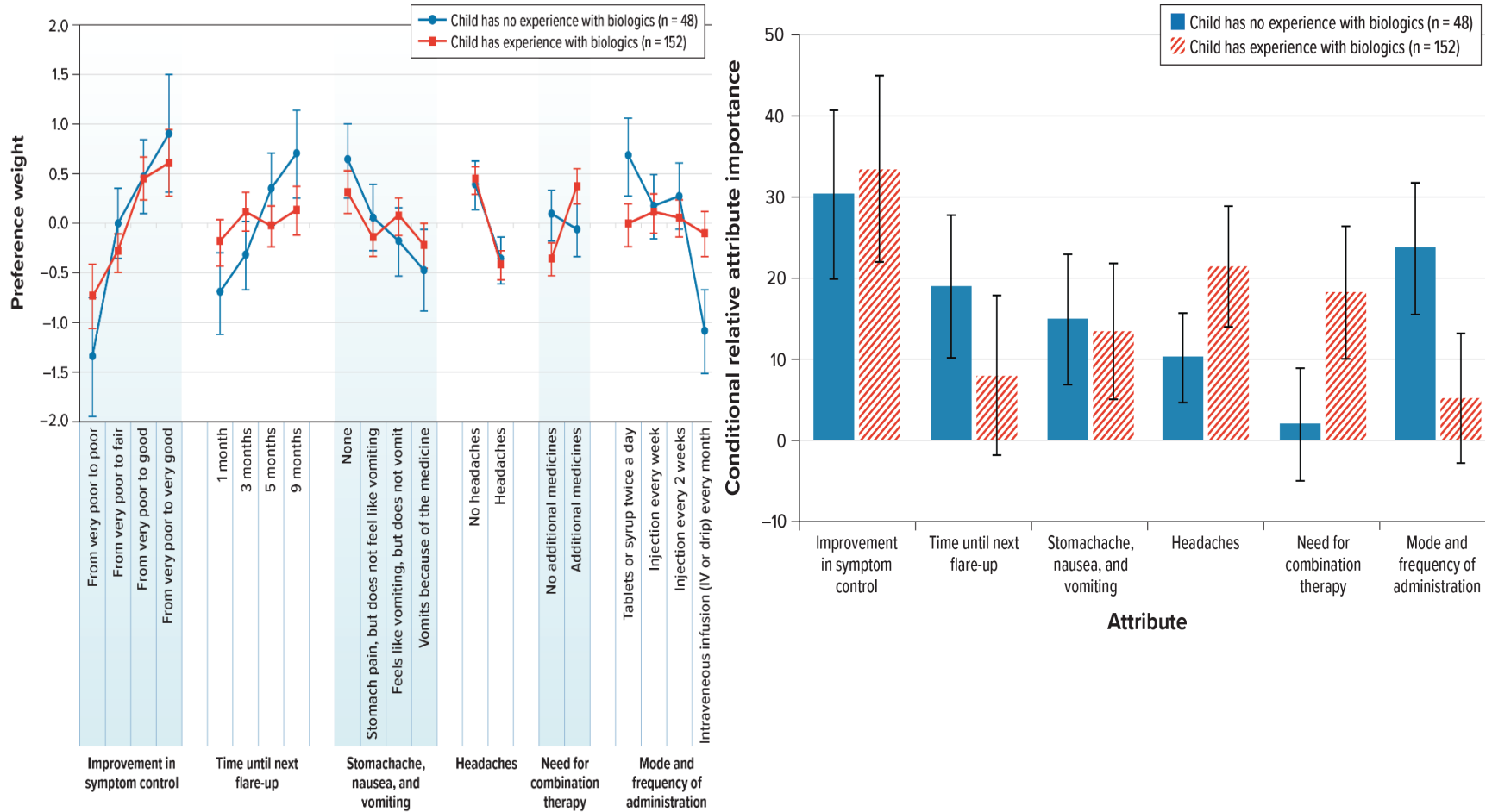
IV = intravenous.

Figure S29. Preference Weights and Conditional Relative Importance Estimates: Caregivers With a Child Who Has Experience With Methotrexate Versus Caregivers With a Child Who Has No Experience With Methotrexate



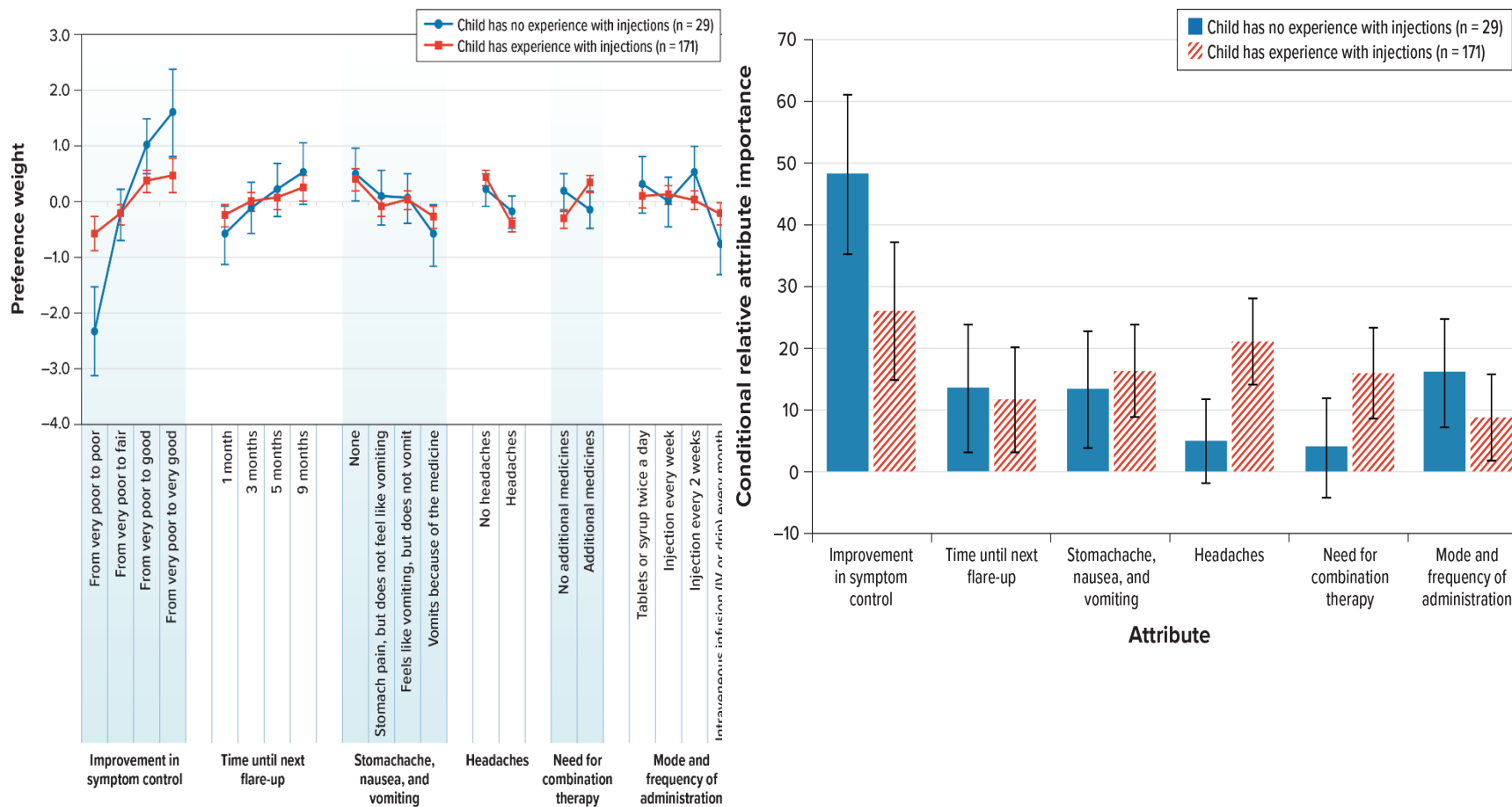
IV = intravenous.

Figure S30. Preference Weights and Conditional Relative Importance Estimates: Caregivers With a Child Who Has Experience With Biologics Versus Caregivers With a Child Who Has No Experience With Biologics



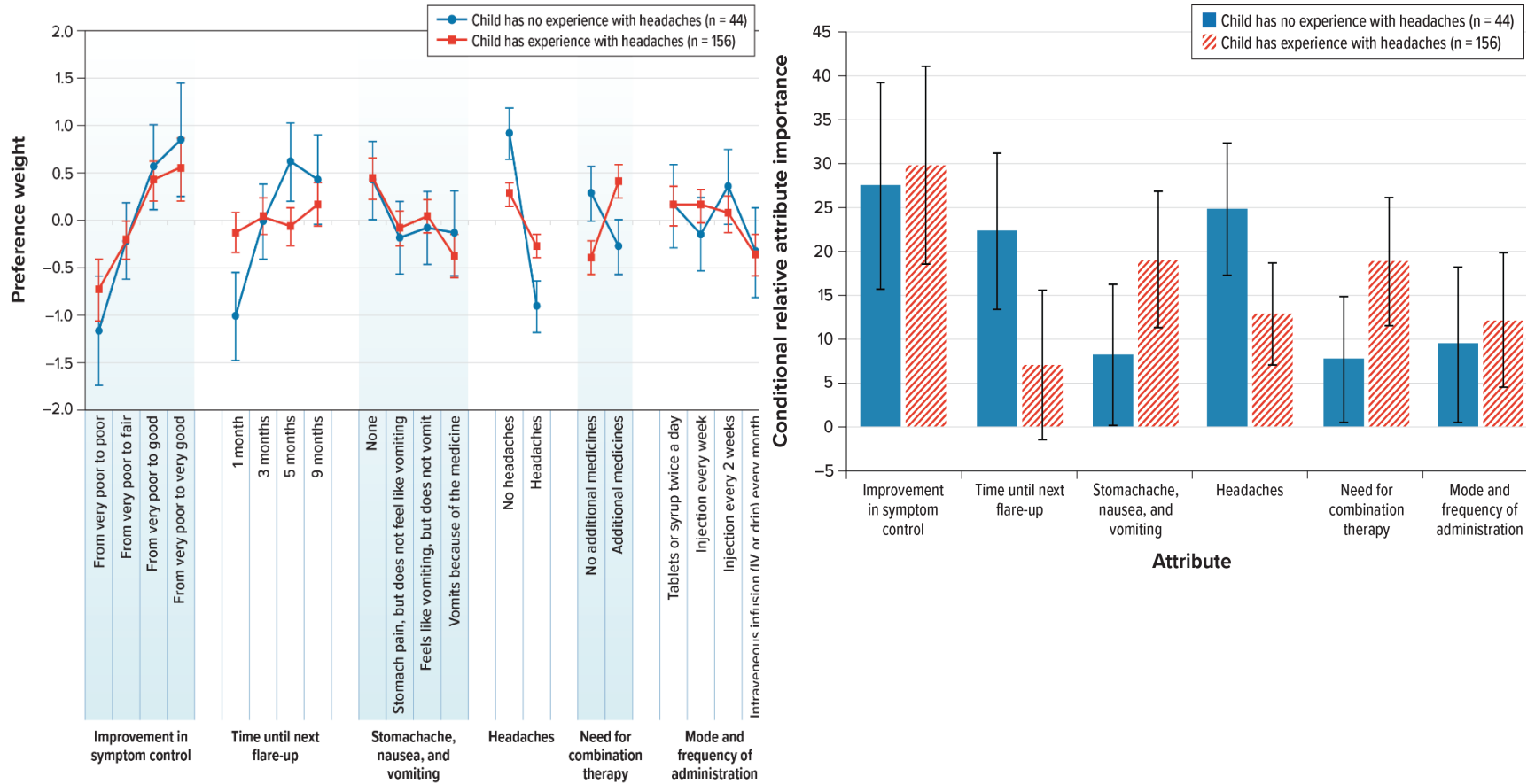
IV = intravenous.

Figure S31. Preference Weights and Conditional Relative Importance Estimates: Caregivers With a Child Who Has Experience With Injections Versus Caregivers With a Child Who Has No Experience With Injections



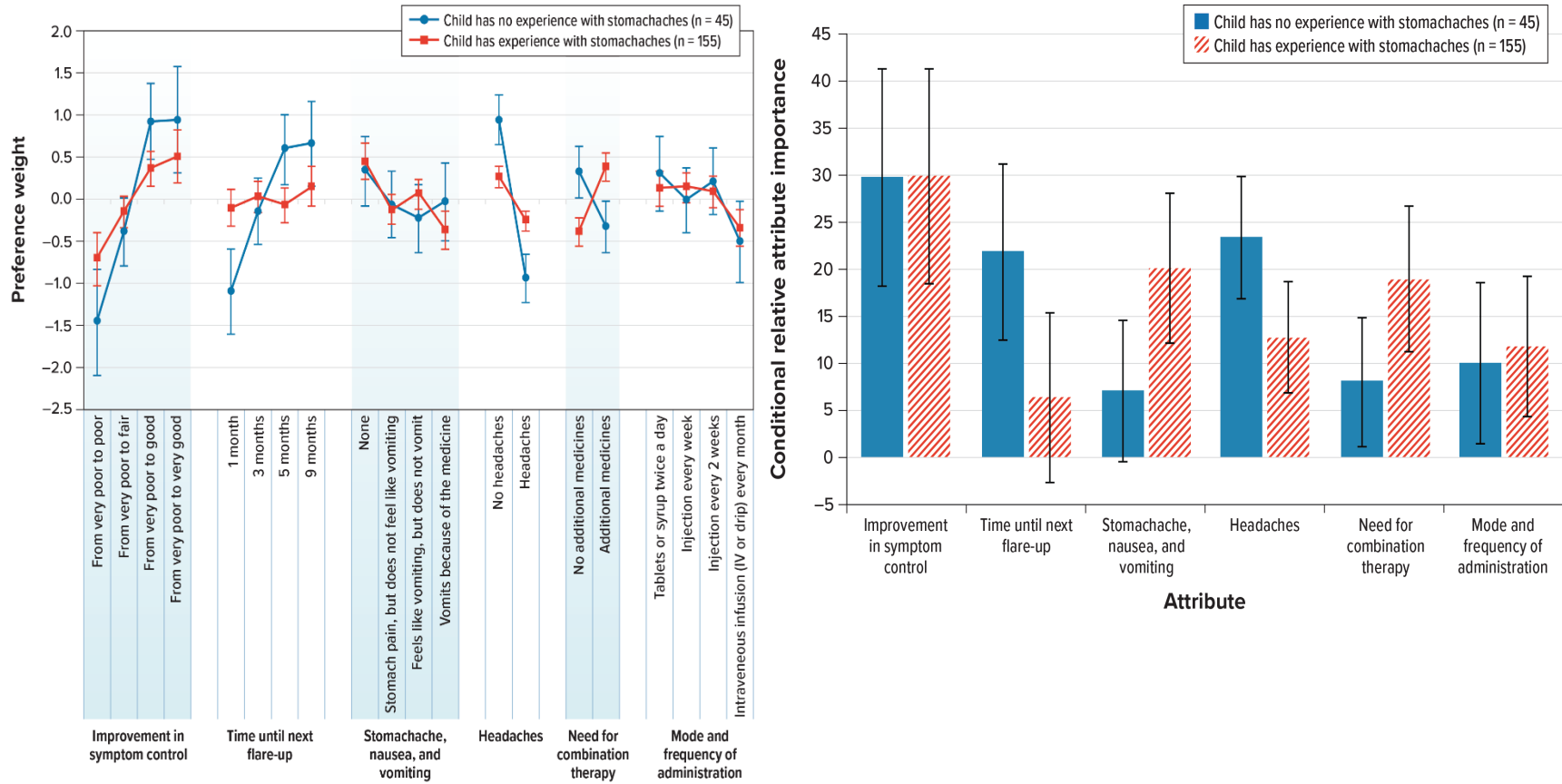
IV = intravenous.

Figure S32. Preference Weights and Conditional Relative Importance Estimates: Caregivers With a Child Who Has Experience With Headaches as a Side Effect of Their Treatment Versus Caregivers With a Child Who Has No Experience With Headaches as a Side Effect of Their Treatment



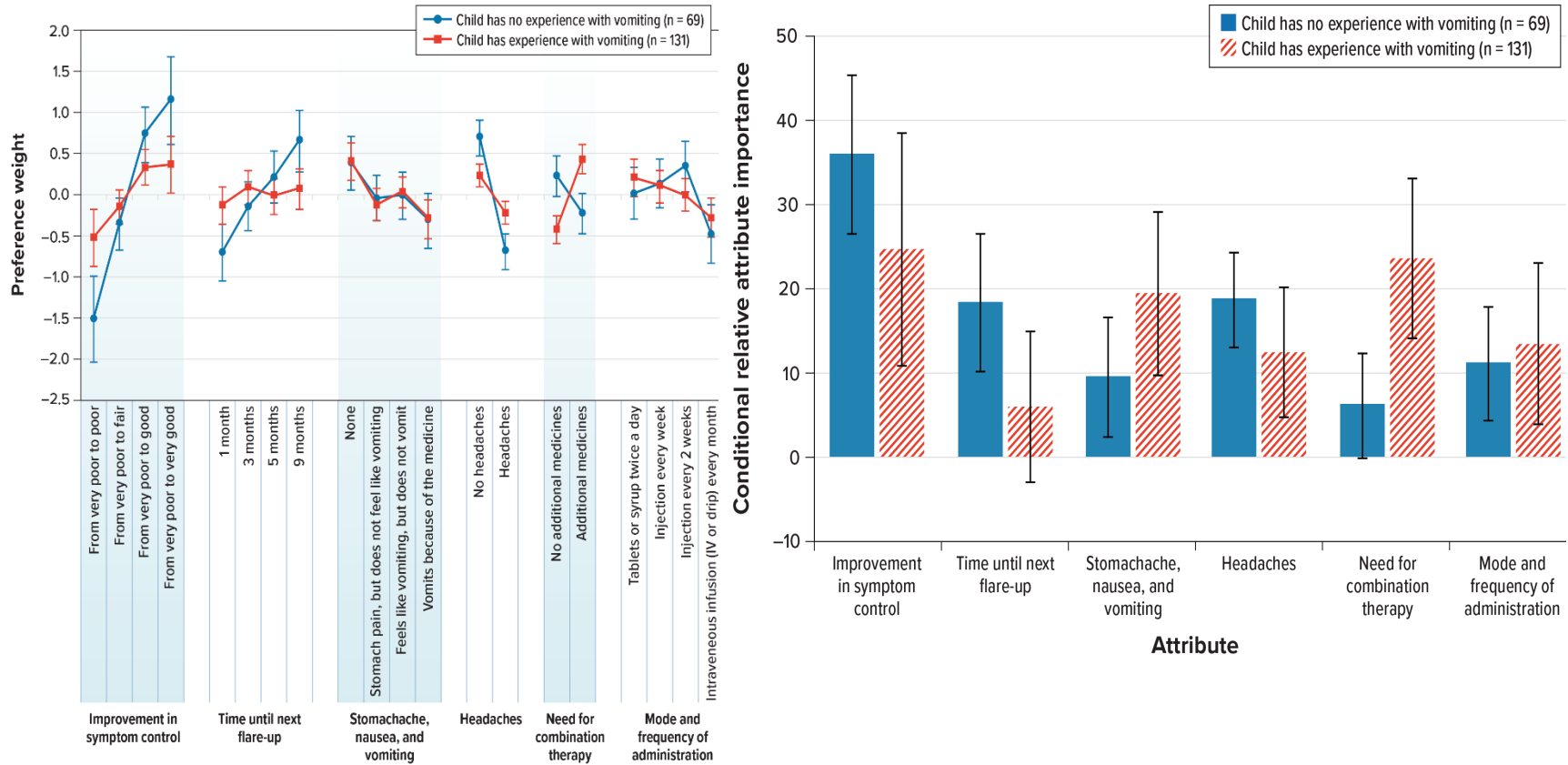
IV = intravenous.

Figure S33. Preference Weights and Conditional Relative Importance Estimates: Caregivers With a Child Who Has Experience With Stomachaches as a Side Effect of Their Treatment Versus Caregivers With a Child Who Has No Experience With Stomachaches as a Side Effect of Their Treatment



IV = intravenous.

Figure S34. Preference Weights and Conditional Relative Importance Estimates: Caregivers With a Child Who Has Experience With Vomiting as a Side Effect of Their Treatment Versus Caregivers With a Child Who Has No Experience With Vomiting as a Side Effect of Their Treatment



IV = intravenous.